



# Third Space Collection

---

Third Space 301-312

---

**Interface**<sup>®</sup>



## Third Space Collection

---



**Your first choice for creating comfortable, collaborative spaces.**

First, there was home. Then, the workplace. Now comes the “third space” — encompassing alternative environments in which people can gather, converse, collaborate and reenergize. To support this engaging ambience, the Third Space collection combines the classic feel of the office with a plush, residential vibe. Ubiquitous, cool neutrals work the room while trending warm hues offer a cosier colour palette.

Transition tiles like Third Space 301, Third Space 302 and Third Space 303 enable nesting and wayfinding through softer, more welcoming shapes.

No stranger to innovation, Interface produces carpet tiles with the lowest carbon footprint in the commercial flooring industry — before any offsets.



## Third Space 301 Colour Range



9866001 MIST



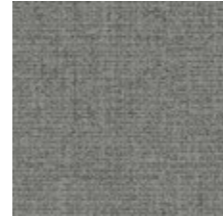
9866002 NAVY



9866003 LINEN



9866004 NICKEL



9866005 FLANNEL



9866006 BLACK



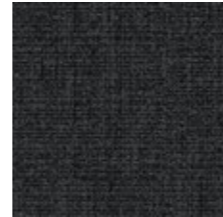
9866007 CHARCOAL



9866008 IRON



9866009 GRANITE



9866010 EBONY



9866011 STONE



9866012 NATURAL



9866013 OAT



9866014 BROWN



9866015 SHELL



9866016 AMBER



PRODUCT THIRD SPACE 301 COLOUR BLACK INSTALLED MONOLITHIC  
PRODUCT PERFECT PAIR COLOUR MONOTYPE INSTALLED NON DIRECTIONAL



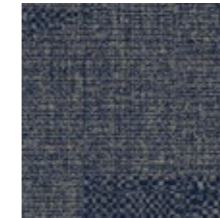


PRODUCT THIRD SPACE 302 COLOUR CHARCOAL INSTALLED MONOLITHIC

### Third Space 302 Colour Range



9867001 MIST



9867002 NAVY



9867003 LINEN



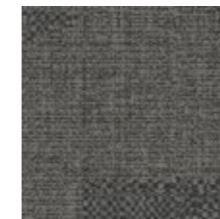
9867004 NICKEL



9867005 FLANNEL



9867006 BLACK



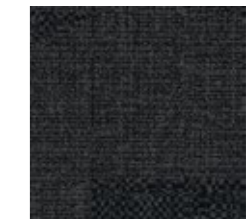
9867007 CHARCOAL



9867008 IRON



9867009 GRANITE



9867010 EBONY



9867011 STONE



9867012 NATURAL



9867013 OAT



9867014 BROWN



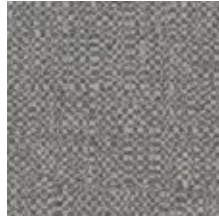
9867015 SHELL



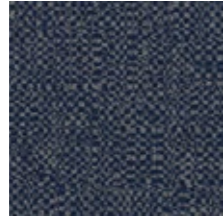
9867016 AMBER



## Third Space 303 Colour Range



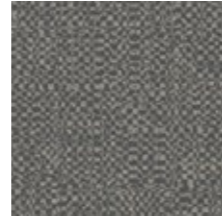
9868001 MIST



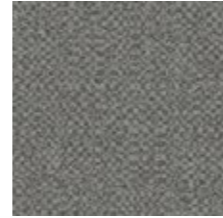
9868002 NAVY



9868003 LINEN



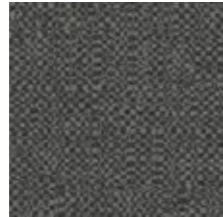
9868004 NICKEL



9868005 FLANNEL



9868006 BLACK



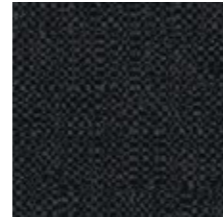
9868007 CHARCOAL



9868008 IRON



9868009 GRANITE



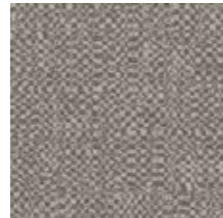
9868010 EBONY



9868011 STONE



9868012 NATURAL



9868013 OAT



9868014 BROWN



9868015 SHELL



9868016 AMBER

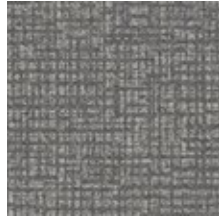




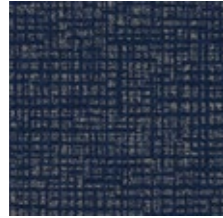




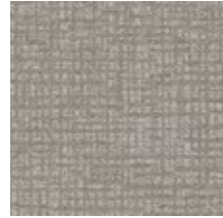
Third Space 304 Colour Range



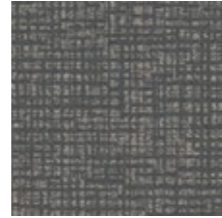
9869001 MIST



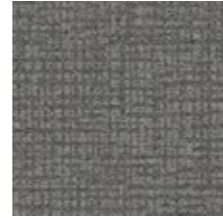
9869002 NAVY



9869003 LINEN



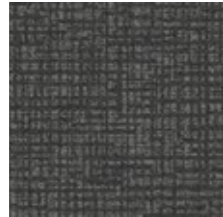
9869004 NICKEL



9869005 FLANNEL



9869006 BLACK



9869007 CHARCOAL



9869008 IRON



9869009 GRANITE



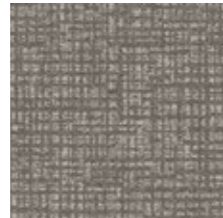
9869010 EBONY



9869011 STONE



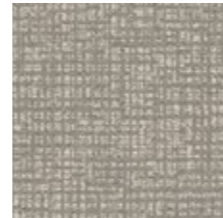
9869012 NATURAL



9869013 OAT



9869014 BROWN



9869015 SHELL



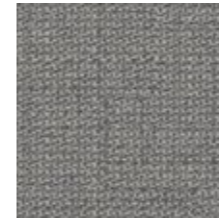
9869016 AMBER



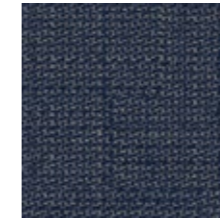




## Third Space 305 Colour Range



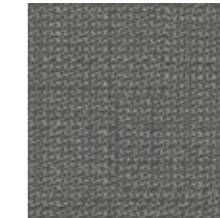
9870001 MIST



9870002 NAVY



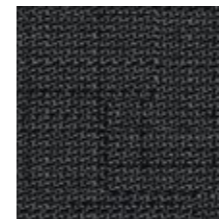
9870003 LINEN



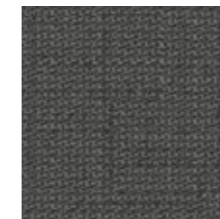
9870004 NICKEL



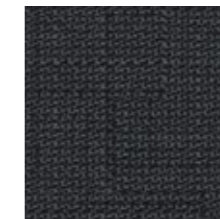
9870005 FLANNEL



9870006 BLACK



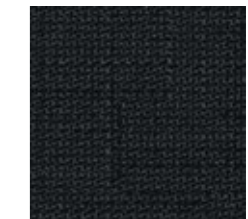
9870007 CHARCOAL



9870008 IRON



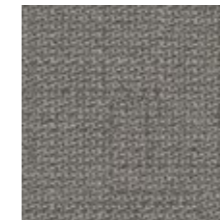
9870009 GRANITE



9870010 EBONY



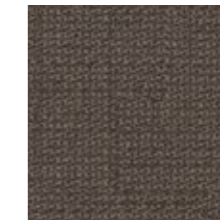
9870011 STONE



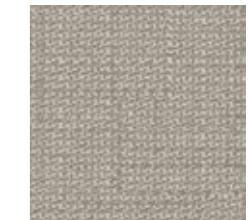
9870012 NATURAL



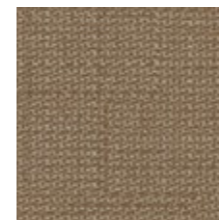
9870013 OAT



9870014 BROWN



9870015 SHELL



9870016 AMBER



## Third Space 306 Colour Range



9871001 MIST



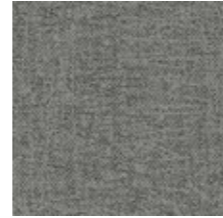
9871002 NAVY



9871003 LINEN



9871004 NICKEL



9871005 FLANNEL



9871006 BLACK



9871007 CHARCOAL



9871008 IRON



9871009 GRANITE



9871010 EBONY



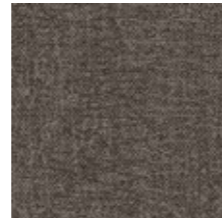
9871011 STONE



9871012 NATURAL



9871013 OAT



9871014 BROWN



9871015 SHELL



9871016 AMBER







## Third Space 307 Colour Range



9875001 MIST



9875002 NAVY



9875003 LINEN



9875004 NICKEL



9875005 FLANNEL



9875006 BLACK



9875007 CHARCOAL



9875008 IRON



9875009 GRANITE



9875010 EBONY



9875011 STONE



9875012 NATURAL



9875013 OAT



9875014 BROWN



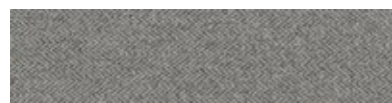
9875015 SHELL



9875016 AMBER



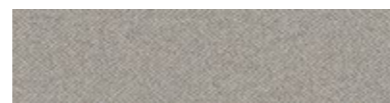
## Third Space 308 Colour Range



9876001 MIST



9876002 NAVY



9876003 LINEN



9876004 NICKEL



9876005 FLANNEL



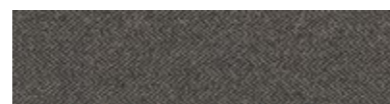
9876006 BLACK



9876007 CHARCOAL



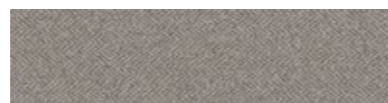
9876008 IRON



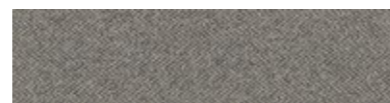
9876009 GRANITE



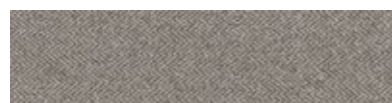
9876010 EBONY



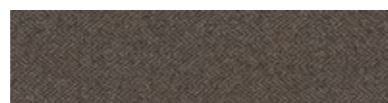
9876011 STONE



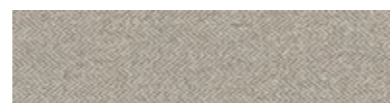
9876012 NATURAL



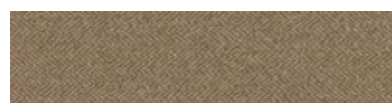
9876013 OAT



9876014 BROWN



9876015 SHELL



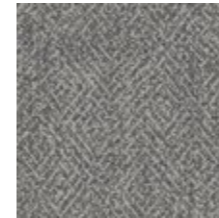
9876016 AMBER







### Third Space 309 Colour Range



9872001 MIST



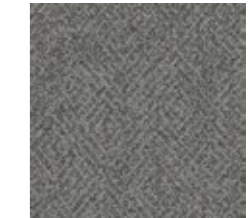
9872002 NAVY



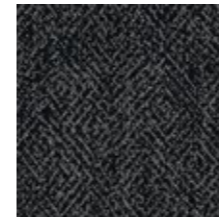
9872003 LINEN



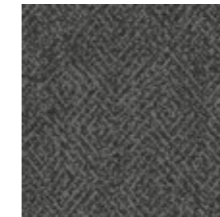
9872004 NICKEL



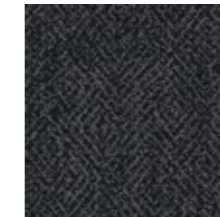
9872005 FLANNEL



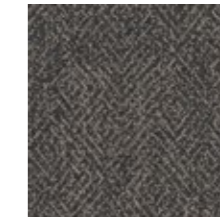
9872006 BLACK



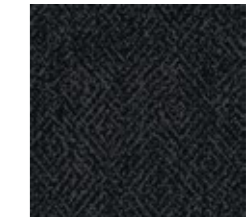
9872007 CHARCOAL



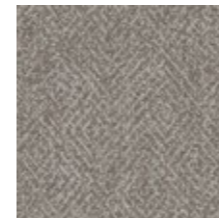
9872008 IRON



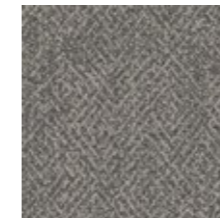
9872009 GRANITE



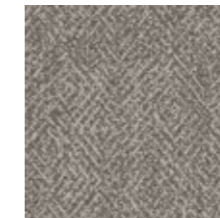
9872010 EBONY



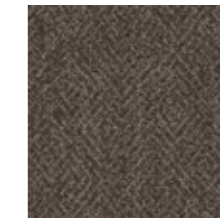
9872011 STONE



9872012 NATURAL



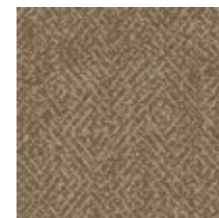
9872013 OAT



9872014 BROWN



9872015 SHELL

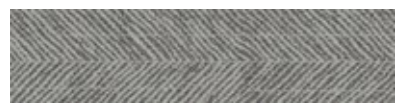


9872016 AMBER

CARPET PRODUCT THIRD SPACE 309 COLOUR NAVY INSTALLED MONOLITHIC  
 LVT PRODUCT TEXTURED STONES COLOUR COOL POLISHED CEMENT INSTALLED NON DIRECTIONAL



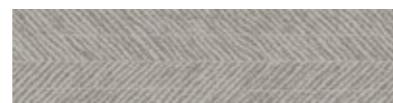
## Third Space 310 Colour Range



9877001 MIST



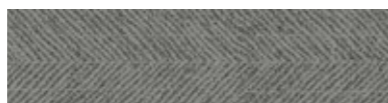
9877002 NAVY



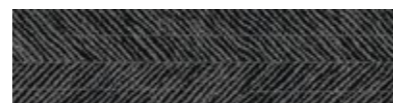
9877003 LINEN



9877004 NICKEL



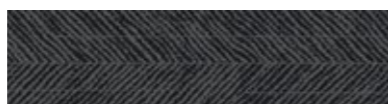
9877005 FLANNEL



9877006 BLACK



9877007 CHARCOAL



9877008 IRON



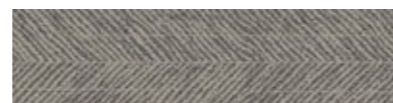
9877009 GRANITE



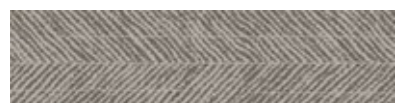
9877010 EBONY



9877011 STONE



9877012 NATURAL



9877013 OAT



9877014 BROWN



9877015 SHELL



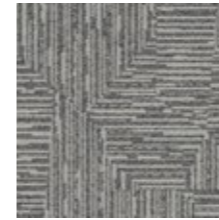
9877016 AMBER







## Third Space 311 Colour Range



9873001 MIST



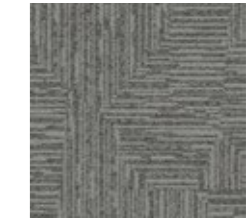
9873002 NAVY



9873003 LINEN



9873004 NICKEL



9873005 FLANNEL



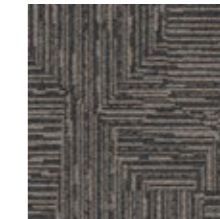
9873006 BLACK



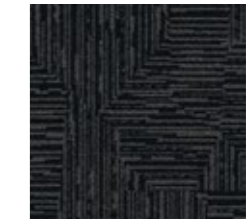
9873007 CHARCOAL



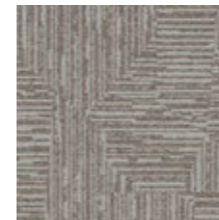
9873008 IRON



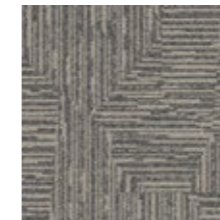
9873009 GRANITE



9873010 EBONY



9873011 STONE



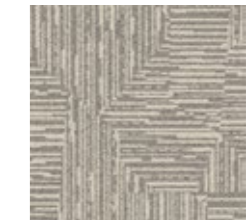
9873012 NATURAL



9873013 OAT



9873014 BROWN



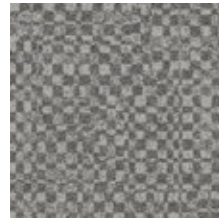
9873015 SHELL



9873016 AMBER



Third Space 312 Colour Range



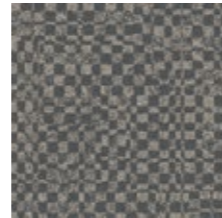
9874001 MIST



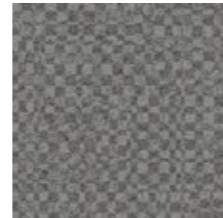
9874002 NAVY



9874003 LINEN



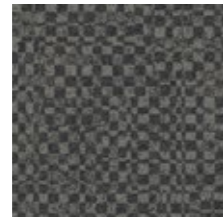
9874004 NICKEL



9874005 FLANNEL



9874006 BLACK



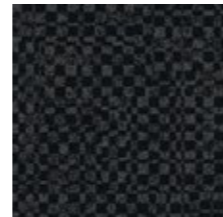
9874007 CHARCOAL



9874008 IRON



9874009 GRANITE



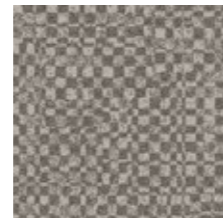
9874010 EBONY



9874011 STONE



9874012 NATURAL



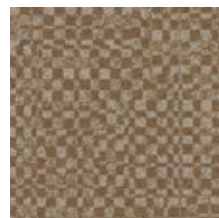
9874013 OAT



9874014 BROWN



9874015 SHELL



9874016 AMBER





## Specifications

### Third Space 301

Style Code	9866
Product Construction	Tapestry Tufted Patterned Structured Loop Pile
Yarn System	100% Recycled Solution Dyed Nylon
Machine Gauge	1/10
Pile Thickness	3.2 ± 0.5mm (Asia)   3.0 ± 0.5mm (Australia & New Zealand)
Total Thickness	7.3 ± 0.5mm (Asia)   7.0 ± 0.5mm (Australia & New Zealand)
Tile Size	50 x 50cm
Area of Use	Commercial Heavy Use
ACCS Grading (Australia & New Zealand Only)	Commercial Extra Heavy Duty & Stairs
Lifetime Antimicrobial	Intersept®
Soil / Stain Protection	Protekt <sup>2®</sup>

### Installation Methods



MONOLITHIC

### Third Space 304

Style Code	9869
Product Construction	Tapestry Tufted Patterned Structured Loop Pile
Yarn System	100% Recycled Solution Dyed Nylon
Machine Gauge	1/10
Pile Thickness	3.8 ± 0.5mm (Asia)   3.0 ± 0.5mm (Australia & New Zealand)
Total Thickness	7.5 ± 0.5mm (Asia)   7.0 ± 0.5mm (Australia & New Zealand)
Tile Size	50 x 50cm
Area of Use	Commercial Heavy Use
ACCS Grading (Australia & New Zealand Only)	Commercial Extra Heavy Duty & Stairs
Lifetime Antimicrobial	Intersept®
Soil / Stain Protection	Protekt <sup>2®</sup>

### Installation Methods



MONOLITHIC

### Third Space 302

Style Code	9867
Product Construction	Tapestry Tufted Patterned Structured Loop Pile
Yarn System	100% Recycled Solution Dyed Nylon
Machine Gauge	1/10
Pile Thickness	3.1 ± 0.5mm (Asia)   3.0 ± 0.5mm (Australia & New Zealand)
Total Thickness	7.3 ± 0.5mm (Asia)   7.0 ± 0.5mm (Australia & New Zealand)
Tile Size	50 x 50cm
Area of Use	Commercial Heavy Use
ACCS Grading (Australia & New Zealand Only)	Commercial Extra Heavy Duty & Stairs
Lifetime Antimicrobial	Intersept®
Soil / Stain Protection	Protekt <sup>2®</sup>

### Installation Methods



MONOLITHIC

### Third Space 305

Style Code	9870
Product Construction	Tapestry Tufted Patterned Structured Loop Pile
Yarn System	100% Recycled Solution Dyed Nylon
Machine Gauge	1/10
Pile Thickness	3.6 ± 0.5mm (Asia)   3.0 ± 0.5mm (Australia & New Zealand)
Total Thickness	7.6 ± 0.5mm (Asia)   7.0 ± 0.5mm (Australia & New Zealand)
Tile Size	50 x 50cm
Area of Use	Commercial Heavy Use
ACCS Grading (Australia & New Zealand Only)	Commercial Extra Heavy Duty & Stairs
Lifetime Antimicrobial	Intersept®
Soil / Stain Protection	Protekt <sup>2®</sup>

### Installation Methods



MONOLITHIC

### Third Space 303

Style Code	9868
Product Construction	Tapestry Tufted Patterned Structured Loop Pile
Yarn System	100% Recycled Solution Dyed Nylon
Machine Gauge	1/10
Pile Thickness	3.5 ± 0.5mm (Asia)   3.0 ± 0.5mm (Australia & New Zealand)
Total Thickness	7.6 ± 0.5mm (Asia)   7.0 ± 0.5mm (Australia & New Zealand)
Tile Size	50 x 50cm
Area of Use	Commercial Heavy Use
ACCS Grading (Australia & New Zealand Only)	Commercial Extra Heavy Duty & Stairs
Lifetime Antimicrobial	Intersept®
Soil / Stain Protection	Protekt <sup>2®</sup>

### Installation Methods



MONOLITHIC

### Third Space 306

Style Code	9871
Product Construction	Tapestry Tufted Patterned Structured Loop Pile
Yarn System	100% Recycled Solution Dyed Nylon
Machine Gauge	1/10
Pile Thickness	3.4 ± 0.5mm (Asia)   3.0 ± 0.5mm (Australia & New Zealand)
Total Thickness	7.5 ± 0.5mm (Asia)   7.0 ± 0.5mm (Australia & New Zealand)
Tile Size	50 x 50cm
Area of Use	Commercial Heavy Use
ACCS Grading (Australia & New Zealand Only)	Commercial Extra Heavy Duty & Stairs
Lifetime Antimicrobial	Intersept®
Soil / Stain Protection	Protekt <sup>2®</sup>

### Installation Methods



MONOLITHIC

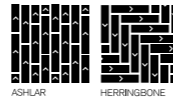


## Specifications

### Third Space 307

Style Code	9875
Product Construction	Tapestry Tufted Patterned Structured Loop Pile
Yarn System	100% Recycled Solution Dyed Nylon
Machine Gauge	1/10
Pile Thickness	3.5 ± 0.5mm (Asia)   3.0 ± 0.5mm (Australia & New Zealand)
Total Thickness	7.5 ± 0.5mm (Asia)   7.0 ± 0.5mm (Australia & New Zealand)
Tile Size	25 x 100cm
Area of Use	Commercial Heavy Use
ACCS Grading (Australia & New Zealand Only)	Commercial Extra Heavy Duty & Stairs
Lifetime Antimicrobial	Intersept®
Soil / Stain Protection	Protekt <sup>2®</sup>

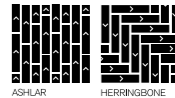
### Installation Methods



### Third Space 310

Style Code	9877
Product Construction	Tapestry Tufted Patterned Structured Loop Pile
Yarn System	100% Recycled Solution Dyed Nylon
Machine Gauge	1/10
Pile Thickness	3.4 ± 0.5mm (Asia)   3.0 ± 0.5mm (Australia & New Zealand)
Total Thickness	7.1 ± 0.5mm (Asia)   7.0 ± 0.5mm (Australia & New Zealand)
Tile Size	25 x 100cm
Area of Use	Commercial Heavy Use
ACCS Grading (Australia & New Zealand Only)	Commercial Extra Heavy Duty & Stairs
Lifetime Antimicrobial	Intersept®
Soil / Stain Protection	Protekt <sup>2®</sup>

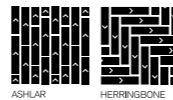
### Installation Methods



### Third Space 308

Style Code	9876
Product Construction	Tapestry Tufted Patterned Structured Loop Pile
Yarn System	100% Recycled Solution Dyed Nylon
Machine Gauge	1/10
Pile Thickness	3.4 ± 0.5mm (Asia)   3.0 ± 0.5mm (Australia & New Zealand)
Total Thickness	7.2 ± 0.5mm (Asia)   7.0 ± 0.5mm (Australia & New Zealand)
Tile Size	25 x 100cm
Area of Use	Commercial Heavy Use
ACCS Grading (Australia & New Zealand Only)	Commercial Extra Heavy Duty & Stairs
Lifetime Antimicrobial	Intersept®
Soil / Stain Protection	Protekt <sup>2®</sup>

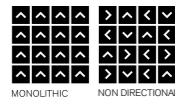
### Installation Methods



### Third Space 311

Style Code	9873
Product Construction	Tapestry Tufted Patterned Structured Loop Pile
Yarn System	100% Recycled Solution Dyed Nylon
Machine Gauge	1/10
Pile Thickness	3.9 ± 0.5mm (Asia)   3.0 ± 0.5mm (Australia & New Zealand)
Total Thickness	7.6 ± 0.5mm (Asia)   7.0 ± 0.5mm (Australia & New Zealand)
Tile Size	50 x 50cm
Area of Use	Commercial Heavy Use
ACCS Grading (Australia & New Zealand Only)	Commercial Extra Heavy Duty & Stairs
Lifetime Antimicrobial	Intersept®
Soil / Stain Protection	Protekt <sup>2®</sup>

### Installation Methods



### Third Space 309

Style Code	9872
Product Construction	Tapestry Tufted Patterned Structured Loop Pile
Yarn System	100% Recycled Solution Dyed Nylon
Machine Gauge	1/10
Pile Thickness	3.9 ± 0.5mm (Asia)   3.0 ± 0.5mm (Australia & New Zealand)
Total Thickness	7.8 ± 0.5mm (Asia)   7.0 ± 0.5mm (Australia & New Zealand)
Tile Size	50 x 50cm
Area of Use	Commercial Heavy Use
ACCS Grading (Australia & New Zealand Only)	Commercial Extra Heavy Duty & Stairs
Lifetime Antimicrobial	Intersept®
Soil / Stain Protection	Protekt <sup>2®</sup>

### Installation Methods



### Third Space 312

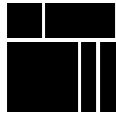
Style Code	9874
Product Construction	Tapestry Tufted Patterned Structured Loop Pile
Yarn System	100% Recycled Solution Dyed Nylon
Machine Gauge	1/10
Pile Thickness	3.8 ± 0.5mm (Asia)   3.0 ± 0.5mm (Australia & New Zealand)
Total Thickness	7.7 ± 0.5mm (Asia)   7.0 ± 0.5mm (Australia & New Zealand)
Tile Size	50 x 50cm
Area of Use	Commercial Heavy Use
ACCS Grading (Australia & New Zealand Only)	Commercial Extra Heavy Duty & Stairs
Lifetime Antimicrobial	Intersept®
Soil / Stain Protection	Protekt <sup>2®</sup>

### Installation Methods





## Why Our Modular Flooring?



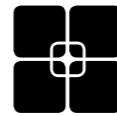
### Modular Flooring

*Performance and flexibility.* Interface's standard backing systems set the industry standard for modular performance. Tiles stay on the floor with no upcurl, no tapping and no rippling effect, yet are easy to selectively replace. Our modular carpet is easier to handle than bulky roll carpet and produces an average of just 2-5% waste compared to roll carpet's average of 15%. And it installs seamlessly with our LVT, no transition strips needed.



### ReEntry

At Interface, an *end of life solution* of our products is a reality. ReEntry is our innovative programme to reclaim materials used in our product. Taking back our product at end of life is a service we provide our customers to ensure that none of the products they use will end up in landfill. Whether it is recycling into new product or re-purposing, we see our customer's waste as an opportunity for new product life.



### TacTiles®

*No glue installation.* Our revolutionary TacTiles installation system eliminates the need for glue, adhering tiles securely together to form a floor that "floats" for greater flexibility, easier replacement and long-term performance. The result? Less mess, less waste and virtually no VOCs, not to mention an environmental footprint that is over 90% lower than that of traditional glue adhesives.



### Intersept®

*Mold protection.* Our proprietary preservative, Intersept, protects our modular carpet against mould growth and odour-causing bacteria—guaranteed. Intersept treated carpet, with proper maintenance, shows no mould or bacterial growth when tested as per the ASTM E2471 Standard Test Method. Intersept is EPA-approved for safe use in carpet, water insoluble and contains no halogens, heavy metals, phenols or formaldehyde.



### Protekt®

*Stain protection.* The life and performance of your flooring is extended with Protekt<sup>2</sup>, our patented stain resistant protection. Protekt<sup>2</sup> uses advanced technology to provide a lasting barrier against permanent soiling and staining, which simplifies the cleaning process and enhances the longevity of your carpet. Protekt<sup>2</sup> is product specific, please refer to individual product specifications for details.



### Health Product Declaration (HPD) –

A transparency tool for evaluating whether a product supports Green Chemistry. As part of our work on Health and Materials, Interface continuously reduces the environmental and health impacts of our products through elimination of materials of concern.



### 15-Year Warranty

Interface products are warranted for 15 years against excessive surface wear, edge ravel, backing separation, shrinking, stretching and static electricity even under castor chair conditions.



### Local Manufacturing

We combine local responsiveness with a global experience. Being part of the same communities as our customers, we foster collaborative, committed, and productive relationships. Our carpet tiles are manufactured in Australia and China, contributing to local economies and the environment.

## Third Party Certifications



### Environmental Product Declaration (EPD)

The Environmental Product Declaration (EPD) is a third party verified environmental certification classified as Type III that quantifies and verifies the lifecycle impacts of products and goods according to the International Standards Organization (ISO) 14025, 14040, 14044 and EN 15804. EPDs help customers that are environmentally driven to evaluate the performance of a product and to make the best decision when choosing a product. Interface EPDs can be found on [interface.com](http://interface.com).



### Global GreenTag GreenRate - Level A

Global GreenTag's GreenRate certification is a product rating system recognised by the Green Building Council of Australia and Green Building Council of New Zealand. Its assessment scheme aligns to the Green Star® Responsible Products program. All Interface products are certified "Level A".



### Best Practice Guidelines for PVC

Our product proudly holds the Best Environmental Practice (BEP) PVC certification, a recognition of compliance with stringent environmental and social criteria in PVC manufacturing. This certification is a key contributor to Green Star certification, aligning with the GBCA's Responsible Products Framework. Our commitment to BEP guidelines demonstrates our dedication to environmental responsibility and product excellence.



### Singapore Green Building Product (SGBP)

The SGBP certification is designed to evaluate and certify building products that meet specific sustainability and environmental performance criteria. The certification scheme helps building professionals identify products that are sustainable and more carbon efficient. Interface carpet tile products are certified "Leader" and LVT products are at "Excellent" Level.



### NSF Certification

NSF International develops public health standards and certification programs that help protect the world's food, water, consumer products and environment. Interface carpet tile products are certified "Gold".



### CRI Green Label Plus

The Carpet and Rug Institute (CRI) Green Label Plus sets higher standards for indoor air quality and ensures that customers are purchasing the very lowest emitting products on the market. Interface Carpet Tiles and TacTiles have fulfilled the requirements for this certification.

### Do more on [interface.com](http://interface.com)

- Browse products, save and share favourites
- See images of products in a variety of room scenes
- Browse floor designs, change colours, upload your own image, download and share
- Get full specifications, sustainability certifications and more
- Sign up to get the latest information on Interface products and news

Our EPDs and certifications contribute credits towards Green Building Council's Green Star® Responsible Products program.

Green Star is the Green Building Council of Australia's sustainability rating system for the built environment. It is used to rate new and existing buildings, new fit-outs, and new precinct developments. The Green Building Council of Australia recognises Responsible Products that may contribute to a Green Star rating through its Responsible Credits.

We have tried our very best to accurately represent product colours. However, due to the nature of printed materials, colour of actual products may vary slightly. Please request a sample to see actual product colour.

Production specifications are subject to normal manufacturing tolerances and may be changed without notice. The visibility of joints may vary based on colour and pattern. Slight variation in colour among different production lots are normal and should be considered in the overall installation plan. Products covered by manufacturer's written warranty only. All other warranties, including without limitation any implied warranties of merchantability or fitness for particular purpose, are hereby disclaimed. Contact your representative for written warranty information.



**[www.interface.com](http://www.interface.com)**

**Australia**

Interface Australia  
local toll free: 1800 804 361

**India**

Interface India  
tel: +91 76249 17934

**South East Asia**

Interface Asia  
tel: +65 6478 1510

**South Korea**

Interface South Korea  
tel: +82 2 555 1734

**Japan**

Interface Japan  
tel: +81(0)3-6892-5513

**Beijing**

Interface China  
tel: +86 10 6590 7810

**Hong Kong**

Interface China  
tel: +852 2802 0838

**Shanghai**

Interface China  
tel: +86 21 6340 3868