



Fresco Valley Collection | LVT

Cliff
Great Heights
Ridge

Interface®

For beautifully uplifting LVT, nature works.

Step into Fresco Valley, a beautifully unique collection of LVT that integrates exquisite, natural detail into three original designs.

Cliff expresses flowing layers of stone, stippled with organic texture. Ridge reveals shimmering seams of water, angling across rocky minerals. And Great Heights, with its rich, glowing woodgrain textures, varies in tone across expanding spaces.

Unique patterns born from nature, with sophisticated hues designed to enrich and enliven enjoyable interior spaces. Available in planks and squares.

Like all Interface products, the Fresco Valley Collection is part of our Carbon Neutral Floors™ program. When you specify Interface flooring, you're on the path to a more sustainable space. You're choosing to reduce the carbon footprint of your space and help improve the health of the planet.

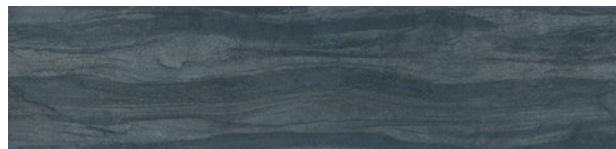




POST OFFICE

OUTGOING

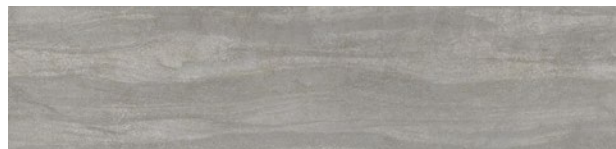
Cliff Colourline



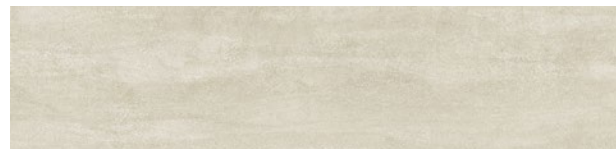
A02401 LAPIS



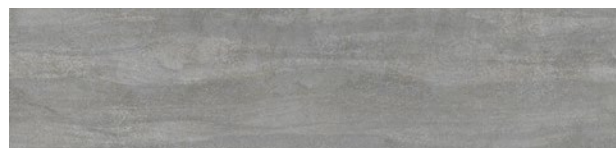
A02402 SANDSTONE



A02403 LIMESTONE



A02404 ALABASTER



A02405 GRANITE



A02406 IRONSTONE





PRODUCT GREAT HEIGHTS COLOUR DOUGLAS FIR INSTALLED HERRINGBONE

Great Heights Colourline



A02501 GREY PINE



A02502 HARD MAPLE



A02503 WHITE OAK



A02504 DOUGLAS FIR



A02505 SEQUOIA



A02506 BIRCH

Ridge Colourline



A02301 PHANTOM



A02302 SHADE



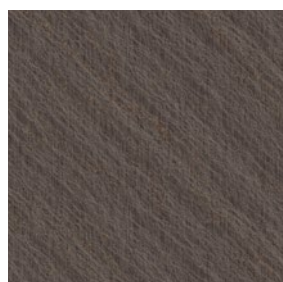
A02303 SAGE



A02304 AGATE



A02305 MUSHROOM



A02306 BOULDER





Install next to
carpet tile **without**
transition strips.

Why Our Modular Resilient LVT?

Integrated System.

Say goodbye to transition strips and doubling up. Our modular resilient floorings are made to work as a system with our modular carpet tile. The compatible size and height of our products allows you to integrate modular carpet for an inset rug or an adjacent field – no transition strip required. You'll avoid doubling up on materials and save cost.

Real Flexibility.

Create a unique look that lasts. Interface modular resilient LVT makes it easy to extend the life of your floor. From simple maintenance like damp mopping to selectively replacing damaged tiles, your flooring investment will stand the test of time - beautifully and effortlessly.

Circular System.

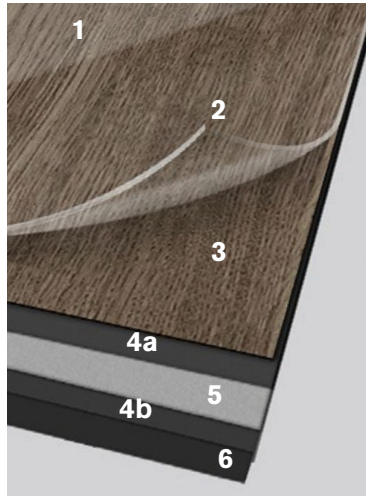
Keep flooring out of the landfill. Our modular resilient LVT is produced with a controlled material stream so it can be reclaimed and recycled into new flooring through our ReEntry® program.

Noise Reduction.

Less distractions. Interface is helping create +Positive spaces™ with our LVT with Sound Choice™ backing, offering you best-in-class performance for reduced impact sound and floor to floor sound transmission.

Including Ceramor+™ our upgraded LVT coating.

Upgrading our Ceramor™ ceramic bead coating to bring you Ceramor+™, the next step in slip-resistant LVT flooring technology, with all the performance you expect from Ceramor™. Ceramor+™ meets R10 and gives a standard P3 slip rating, indicating a low slip potential for Fresco Valley collection.



High Performance from Top to Bottom.

1. **Ceramor+™ Coating.** Minimizes everyday scratching and scuffing.
2. **Wear Layer.** High quality layer enabling 15 years of resilience and performance.
3. **Print Film.** Provides outstanding visuals of natural materials and Interface innovative designs.
- 4a 4b. **Core Sheet.** Creates a thickness for a stronger core and reduces telegraphing from beneath.
5. **Fiberglass.** Adds dimensional stability and controlled flexibility.
6. **Sound Choice™.** Provides comfort and superior acoustic performance.

Third Party Certification.



Carbon Neutral Floors™

Carbon Neutral Floors. All Interface flooring sold globally is third party verified carbon neutral. We've taken a holistic approach to achieve carbon neutrality, first through reducing the carbon footprint of our products and then using carbon offsets for the remainder.



Environmental Product Declaration (EPD). Interface LVT products are covered by an EPD. An EPD provides a comprehensive statement of product ingredients and environmental impacts based upon life cycle assessment performed to ISO standards.



Sustainable Assessment. Interface LVT meets the certification standards of the NSF/ANSI 332 Sustainability Assessment for Resilient Floor Coverings. This standard evaluates the environmental impact of resilient floor covering for its entire lifecycle.

Indoor Air Quality. All Interface modular flooring products meet the highest standards for indoor air quality. Interface LVT is FloorScore® Certified, assuring very low emissions of VOCs.



Lloyd's Register Statement of Compliance. All Interface vinyl flooring has been assessed and verified by Lloyd's Register Quality Assurance ensuring compliance with the Green Building Council of Australia's "Guidelines for Best Environmental Practice PVC" and recognised under its Green Star Rating scheme.

Specifications

Fresco Valley Collection | LVT

| | |
|---------------------------------|--|
| Product Name / Number | A023 (Ridge) A024 (Cliff) A025 (Great Heights) |
| Product Construction | High Performance Luxury Vinyl Tile |
| Wear Layer Thickness | 0.55 mm |
| Total Thickness (Metric) | 4.5 mm |
| Classification | EN 651 Class 33 (heavy contract) EN 651 Class 42 (light industrial general) |
| Acoustic Impact Noise Reduction | ISO 140.8 ΔLw = 16dB |
| Finish | CERAMOR+™ UV Stabilized Ceramic Bead Coating |
| Nominal Dimensions | 50 x 50 cm (Ridge), 25 x 100 cm (Cliff & Great Heights) |

Performance Specifications

| | | |
|-------------------------|--------------------|------------------------|
| Critical Heat Flux | AS ISO 9239-1 | >7kW/m2 |
| Smoke Rate | AS ISO 9239-1 | <750%.min |
| Size, Tolerance | ISO 24342 | >400 mm < 0.35 mm |
| | ISO 24342 | <400 mm < 0.25 mm |
| Dimensional Stability | ISO 23999 | <0.25% |
| Thickness | ISO 24346 | Average value + 0.20mm |
| Resistance to Light | ISO 105-B02 | ≥6 |
| Resistance to Heat | ASTM F1514 | ΔE< 8 avg Max |
| Resistance to Chemicals | EN-ISO 26987 | Pass |
| Reaction to Fire | EN ISO 13501-1 | Class Bfl-S1 |
| VOC Test | ISO 10580 | Pass |
| Flexibility | ISO 24344 Method A | Pass |
| Static Load | ASTM F970 | ≤0.005" with 1500 psi |
| Castor chair | ISO 4918 | Pass |
| Thermal Conductivity | EN 12667 | 0.16 W/mK |
| Static Electrical | EN 1815 | <2kV |
| Slip Resistance | AS 4586:2014 | R10/P3 |

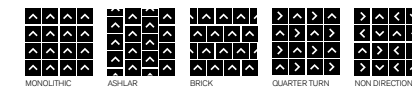
Environmental Specifications

| | |
|------------------------------------|--|
| Total Recycled Content | 39% |
| Ingredients and Life Cycle Impacts | EPD for LVT |
| Sustainability Assessment | NSF/ANSI 332, Meets Certification Guidelines |
| LEED v4 | Contributes to IEQ: Low Emitting Materials; M&R: EPD and EPR |
| End of Life | Fully Recyclable to carpet tile Backing Recycling |

Technical Information

| | |
|---------------------|--|
| Installation | See Interface LVT Installation Guidelines online |
| Maintenance | See Interface LVT Maintenance Guidelines online |
| Reclamation | Recyclable through ReEntry® |
| Warranty | 15 Year Standard LVT Product Warranty |
| Installation Method | |

Ridge



Cliff & Great Heights



Production specifications are subject to normal manufacturing tolerances and may be changed without notice. Slight variation in colour among different production lots are normal and should be considered in the overall installation plan. Products covered by manufacturer's written warranty only. All other warranties, including without limitation any implied warranties of merchantability of fitness for particular purpose, are hereby disclaimed. Contact your representative for written warranty information.

www.interface.com

Australia

Interface Australia
local toll free: 1800 804 361

India

Interface India
tel: +91 80 4613 1313

South East Asia

Interface Asia
tel: +65 6478 1510

South Korea

Interface South Korea
tel: +82 2 555 1734

Japan

Interface Japan
tel: +81 3 5733 5211

Beijing

Interface China
tel: +86 10 6590 7810

Hong Kong

Interface China
tel: +852 2802 0838

Shanghai

Interface China
tel: +86 21 6340 3868

08/2022



Climate change is undeniable. And reversible. Our mission is to prove it. **Join the #ClimateTakeBack and help create a climate fit for life.**