



## TEST REPORT

Sample Manufacturing: Interface Australia PTY LTD  
34 Airds Road Minto  
NSW 2566  
Australia

Test Report No: R22-385  
Sample Received Date: 2/09/2022  
Test Date: 12/10/2022  
Report Date: 12/10/2022

Sample Description: Client Reference: "DRY BARK"  
Loop Pile Carpet Tile  
100% Solution Dyed Nylon 6  
780g/m<sup>2</sup> on a Glasbac Backing

Test Sponsor:  
Interface Australia

AS ISO 9239.1-2003: Reaction to Fire Tests for Floorings – Determination of the Burning Behaviour Using a Radiant Heat Source

### Results Summary

CHF Value	Sample 1	Sample 2	Sample 3	Mean	
Length	3.6	4.2	3.8	3.9	kW/m <sup>2</sup>
Width	3.9	-	-	-	kW/m <sup>2</sup>

Smoke Value	Sample 1	Sample 2	Sample 3	Mean	
Length	242	219	252	238	%.min
Width	223	-	-	-	%.min

Melting YES

Blistering YES

The test results relate to the behaviour of the test specimens of a product under the particular conditions of the test, they are not intended to be sole criterion for assessing the potential fire hazard of the product in use.

Sample was conditioned in accordance with BS EN 13238 at a temperature of 23±2°C and relative humidity of 50±5% for a minimum of 72 hours prior to testing, which is inclusive of adhesive curing time.

Each Specimen was adhered to a substrate of 9mm Fibre Cement Board using Intertac+ Adhesive.

KARTHIK BHASKARAN  
Materials Scientist

APPROVED SIGNATORY



## TEST REPORT

Sample	Interface Australia PTY LTD	Test Report No:	R22-385
Manufacturing:	34 Airds Road Minto	Sample Received Date:	2/09/2022
	NSW 2566	Test Date:	12/10/2022
	Australia	Report Date:	12/10/2022

### Sample 1 Length

#### Test Results

Time to ignition	: 2 minutes 16 seconds (136 s)
Time to flameout	: 50 minutes 05 seconds (3005 s)
Extent of burning (mm)	: 490
Critical flux at extinguishment (kW/m <sup>2</sup> )	: 3.64
HF-10 (kW/m <sup>2</sup> )	: 8.45
HF-20 (kW/m <sup>2</sup> )	: 5.95
HF-30 (kW/m <sup>2</sup> )	: 4.55
Flame spread at 10 minutes (mm)	: 250
Flame spread at 20 minutes (mm)	: 360
Flame spread at 30 minutes (mm)	: 430
Peak light attenuation (%)	: 36.31
Time to peak light attenuation	: 6 minutes 05 seconds (365 s)
Total integrated smoke (%.min)	: 242.43



## TEST REPORT

Sample	Interface Australia PTY LTD	Test Report No:	R22-385
Manufacturing:	34 Airds Road Minto	Sample Received Date:	2/09/2022
	NSW 2566	Test Date:	12/10/2022
	Australia	Report Date:	12/10/2022

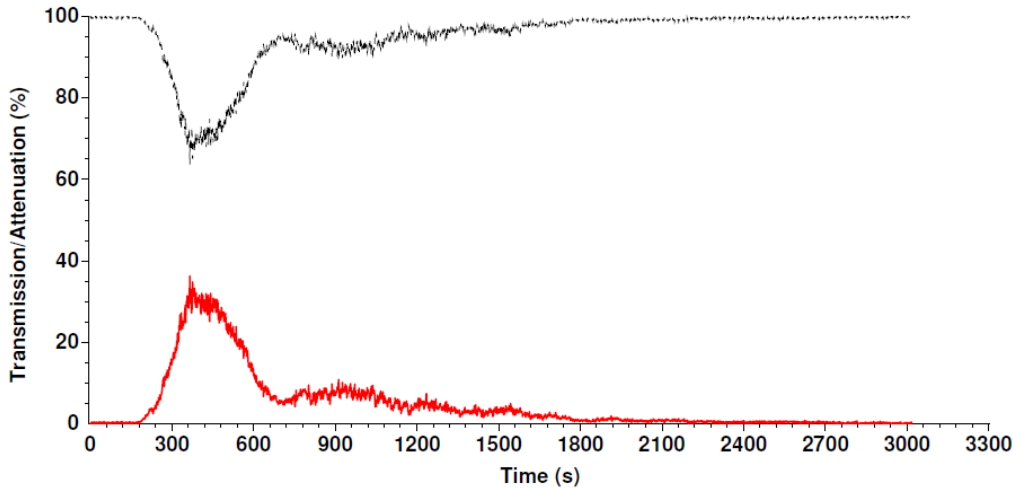
### Sample 1 Length

### Light Attenuation Over Time and Rake Results

Report produced with the Fire Testing Technology FRPSoft software

page 3

### Smoke Graph



Test name : LENGTH1  
 File name : C:\FRPSOFT\DATA\22100021.CSV

### Rake Results

Position (mm)	Time (s)	Flux (kW/m <sup>2</sup> )	Qsb (MJ/m <sup>2</sup> )	Position (mm)	Time (s)	Flux (kW/m <sup>2</sup> )	Qsb (MJ/m <sup>2</sup> )
60	227	12.3	2.803	510	-	3.4	-
110	358	11.3	4.054	560	-	2.8	-
160	399	10.4	4.154	610	-	2.4	-
210	491	9.4	4.606	660	-	2.0	-
260	634	8.2	5.206	710	-	1.6	-
310	952	7.1	6.762	760	-	1.4	-
360	1197	6.0	7.126	810	-	1.3	-
410	1605	4.9	7.837	860	-	1.2	-
460	2156	4.1	8.736	910	-	1.0	-



## TEST REPORT

Sample	Interface Australia PTY LTD	Test Report No:	R22-385
Manufacturing:	34 Airds Road Minto	Sample Received Date:	2/09/2022
	NSW 2566	Test Date:	12/10/2022
	Australia	Report Date:	12/10/2022

### Sample 1 Width

#### Test Results

Time to ignition	: 2 minutes 17 seconds (137 s)
Time to flameout	: 57 minutes 09 seconds (3429 s)
Extent of burning (mm)	: 470
Critical flux at extinguishment (kW/m <sup>2</sup> )	: 3.91
HF-10 (kW/m <sup>2</sup> )	: 8.45
HF-20 (kW/m <sup>2</sup> )	: 6.87
HF-30 (kW/m <sup>2</sup> )	: 5.10
Flame spread at 10 minutes (mm)	: 250
Flame spread at 20 minutes (mm)	: 320
Flame spread at 30 minutes (mm)	: 400
Peak light attenuation (%)	: 34.55
Time to peak light attenuation	: 6 minutes 39 seconds (399 s)
Total integrated smoke (%.min)	: 222.86



## TEST REPORT

Sample	Interface Australia PTY LTD	Test Report No:	R22-385
Manufacturing:	34 Airds Road Minto	Sample Received Date:	2/09/2022
	NSW 2566	Test Date:	12/10/2022
	Australia	Report Date:	12/10/2022

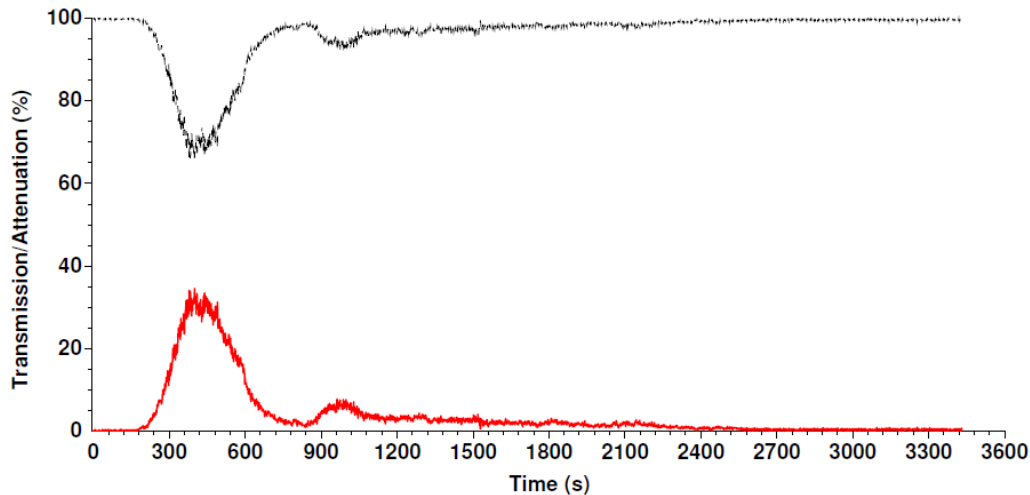
### Sample 1 Width

### Light Attenuation Over Time and Rake Results

Report produced with the Fire Testing Technology FRPSoft software

page 3

### Smoke Graph



Test name : WIDTH1  
 File name : C:\FRPSOFT\DATA\22100022.CSV

### Rake Results

Position (mm)	Time (s)	Flux (kW/m <sup>2</sup> )	Qsb (MJ/m <sup>2</sup> )	Position (mm)	Time (s)	Flux (kW/m <sup>2</sup> )	Qsb (MJ/m <sup>2</sup> )
60	194	12.3	2.395	510	-	3.4	-
110	365	11.3	4.133	560	-	2.8	-
160	408	10.4	4.248	610	-	2.4	-
210	464	9.4	4.353	660	-	2.0	-
260	715	8.2	5.872	710	-	1.6	-
310	1110	7.1	7.884	760	-	1.4	-
360	1426	6.0	8.489	810	-	1.3	-
410	2011	4.9	9.820	860	-	1.2	-
460	2884	4.1	11.686	910	-	1.0	-



## TEST REPORT

Sample	Interface Australia PTY LTD	Test Report No:	R22-385
Manufacturing:	34 Airds Road Minto	Sample Received Date:	2/09/2022
	NSW 2566	Test Date:	12/10/2022
	Australia	Report Date:	12/10/2022

### Sample 2 Length

#### Test Results

Time to ignition	: 2 minutes 20 seconds (140 s)
Time to flameout	: 48 minutes 36 seconds (2916 s)
Extent of burning (mm)	: 450
Critical flux at extinguishment (kW/m <sup>2</sup> )	: 4.22
HF-10 (kW/m <sup>2</sup> )	: 8.68
HF-20 (kW/m <sup>2</sup> )	: 6.64
HF-30 (kW/m <sup>2</sup> )	: 5.10
Flame spread at 10 minutes (mm)	: 240
Flame spread at 20 minutes (mm)	: 330
Flame spread at 30 minutes (mm)	: 400
Peak light attenuation (%)	: 34.71
Time to peak light attenuation	: 7 minutes 12 seconds (432 s)
Total integrated smoke (%.min)	: 219.44



## TEST REPORT

Sample	Interface Australia PTY LTD	Test Report No:	R22-385
Manufacturing:	34 Airds Road Minto	Sample Received Date:	2/09/2022
	NSW 2566	Test Date:	12/10/2022
	Australia	Report Date:	12/10/2022

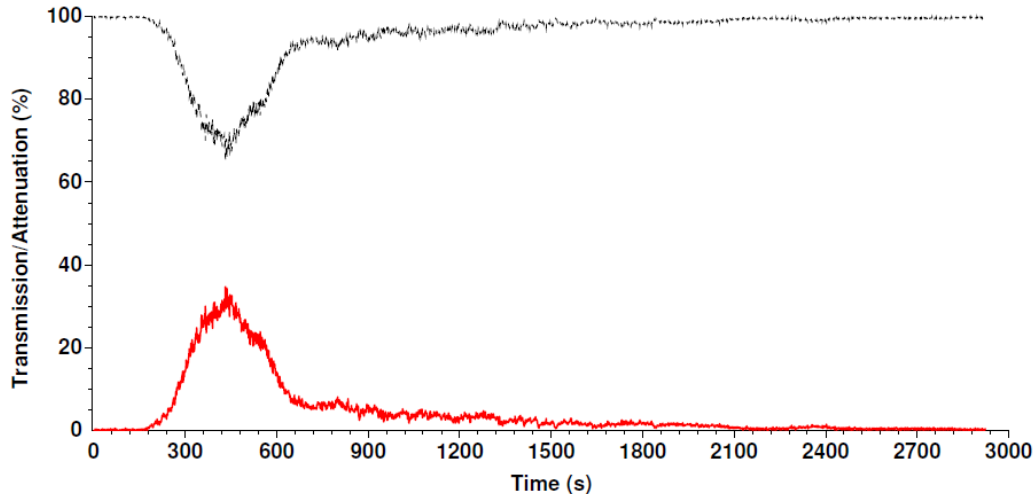
### Sample 2 Length

### Light Attenuation Over Time and Rake Results

Report produced with the Fire Testing Technology FRPSoft software

page 3

### Smoke Graph



Test name : LENGTH2  
 File name : C:\FRPSOFT\DATA\22100023.CSV

### Rake Results

Position (mm)	Time (s)	Flux (kW/m <sup>2</sup> )	Qsb (MJ/m <sup>2</sup> )	Position (mm)	Time (s)	Flux (kW/m <sup>2</sup> )	Qsb (MJ/m <sup>2</sup> )
60	258	12.3	3.185	510	-	3.4	-
110	337	11.3	3.816	560	-	2.8	-
160	448	10.4	4.665	610	-	2.4	-
210	501	9.4	4.700	660	-	2.0	-
260	678	8.2	5.568	710	-	1.6	-
310	1001	7.1	7.110	760	-	1.4	-
360	1441	6.0	8.578	810	-	1.3	-
410	1899	4.9	9.273	860	-	1.2	-
460	-	4.1	-	910	-	1.0	-



## TEST REPORT

Sample	Interface Australia PTY LTD	Test Report No:	R22-385
Manufacturing:	34 Airds Road Minto	Sample Received Date:	2/09/2022
	NSW 2566	Test Date:	12/10/2022
	Australia	Report Date:	12/10/2022

### Sample 3 Length

#### Test Results

Time to ignition	: 2 minutes 18 seconds (138 s)
Time to flameout	: 59 minutes 43 seconds (3583 s)
Extent of burning (mm)	: 480
Critical flux at extinguishment (kW/m <sup>2</sup> )	: 3.78
HF-10 (kW/m <sup>2</sup> )	: 8.45
HF-20 (kW/m <sup>2</sup> )	: 5.95
HF-30 (kW/m <sup>2</sup> )	: 4.88
Flame spread at 10 minutes (mm)	: 250
Flame spread at 20 minutes (mm)	: 360
Flame spread at 30 minutes (mm)	: 410
Peak light attenuation (%)	: 36.22
Time to peak light attenuation	: 6 minutes 31 seconds (391 s)
Total integrated smoke (%.min)	: 252.21





## TEST REPORT

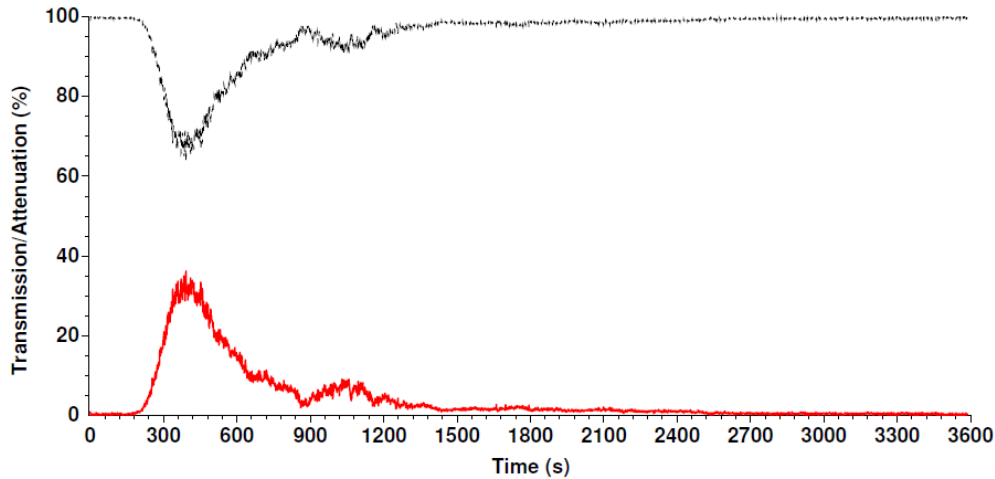
Sample	Interface Australia PTY LTD	Test Report No:	R22-385
Manufacturing:	34 Airds Road Minto	Sample Received Date:	2/09/2022
	NSW 2566	Test Date:	12/10/2022
	Australia	Report Date:	12/10/2022

**Sample 3 Length**  
**Light Attenuation Over Time and Rake Results**

Report produced with the Fire Testing Technology FRPSoft software

page 3

### Smoke Graph



Test name : LENGTH3  
 File name : C:\FRPSOFT\DATA\22100024.CSV

### Rake Results

Position (mm)	Time (s)	Flux (kW/m <sup>2</sup> )	Qsb (MJ/m <sup>2</sup> )	Position (mm)	Time (s)	Flux (kW/m <sup>2</sup> )	Qsb (MJ/m <sup>2</sup> )
60	233	12.3	2.877	510	-	3.4	-
110	315	11.3	3.567	560	-	2.8	-
160	383	10.4	3.988	610	-	2.4	-
210	438	9.4	4.109	660	-	2.0	-
260	695	8.2	5.707	710	-	1.6	-
310	864	7.1	6.137	760	-	1.4	-
360	1176	6.0	7.001	810	-	1.3	-
410	1660	4.9	8.106	860	-	1.2	-
460	2390	4.1	9.684	910	-	1.0	-

END OF REPORT