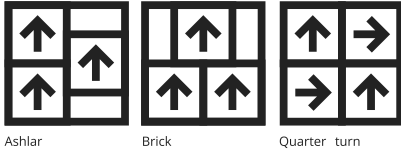




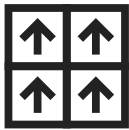
Installation Method



Ashlar

Brick

Quarter turn



Monolithic

All product specifications reflect averages derived from product sample testing, are subject to normal manufacturing and testing tolerances and inherent pattern variances, and may be changed without notice. For more information about these and other important attributes of the product(s) described herein, including recycled content and product warranty information, please see www.interface.com/disclaimer.

Product Farmland Loop **Color** Mushroom **Collection** Biodiversity Collection **Backing** GlasBac™

Product Specifications

Product Number	1471502500
Product Construction	Tufted Textured Loop
Yarn System	Post-Consumer Content Nylon
Yarn Manufacturer	Universal
Dye Method	100% Solution Dyed
Soil/Stain Protection	Protekt ² ®
Preservative Protection	Intersept®

More Product Specifications

	Imperial	Metric
Tufted Yarn Weight	18 oz/yd ²	610 g/m ²
Machine Gauge	1/12 in	47.2 ends/10cm
Pile Height	0.15 in	3.80 mm
Pile Thickness	0.11 in	2.70 mm
Stitches	9.00 /in	35.43 ends/10cm
Pile Density	6,056 oz/yd ³	224,555 g/m ³
Size	19.69 in x 19.69 in	50cm x 50cm

Performance Specifications

Flooring Radiant Panel	(ASTM E-648) Passes
Smoke Density	(ASTM E-662) ≤ 450
Flammability	Passes Methenamine Pill Test (DOC-FF1-70)
Lightfastness	(AATCC 16 - E) ≥ 4.0 @ 60 AFU's
Static	(AATCC - 134) < 3.0 KV
Dimensional Stability	AACHEN Din 54318 < 0.10%
Traffic Classification	Severe
Fiber Modification Ratio	1.7 to 1.9
Preservative Efficacy	(AATCC 174 Parts 2&3) 99% Reduction/No Mold 7 Days (ASTM E-2471) Complete Inhibition

Health + Environmental Specifications

Embodied Carbon (Cradle to Gate)	4.62 Kg CO ₂ /M ²
Total Recycled Content	64.17 %
Recycled Content (Pre Consumer)	62.87 %
Recycled Content (Post Consumer)	1.30 %
Indoor Air Quality	Green Label Plus #GLP0820
Material Composition	Free of Added Heavy Metals, Formaldehyde, Fluorinated Chemicals (PFAS), and Halogenated Flame Retardants.
Disclosure of Environmental Impacts	Environmental Product Declaration
Disclosure of Product Ingredients	Health Product Declaration
Environmental Certifications	NSF/ANSI 140 Gold
LEED v4	Contributes to multiple IEQ and MR credits
End of Life	Carpet to Carpet Recycling through ReEntry®

Technical Information

Installation	Interface Installation Guidelines
Maintenance	Recommended Interface Maintenance Guidelines
Reclamation	Recyclable through ReEntry® - Call 1.888.733.6873 (U.S.) / 1.866.398.3191 (Canada)
Warranty	15 Year Standard Carpet Warranty
Installation Method	Monolithic Quarter Turn Ashlar Brick
Manufacturing Location	ISO 9001 & 14001 Certified facilities in Troup County, Georgia, United States