



Living Well



MODULAR
FLOORING
FOR SENIOR
COMMUNITIES

Interface®

- 04 Inspired By Stoneware
- 14 Inspired By White Oak
- 24 Inspired By Pewter
- 34 Product Specifications
- 34 Why Modular Flooring

The lifestyles of seniors are evolving. So are the communities they live in. Taking a cue from natural materials, these sophisticated floor palettes serve as a foundation for spaces that help connect people and invigorate their senses.





Stoneware





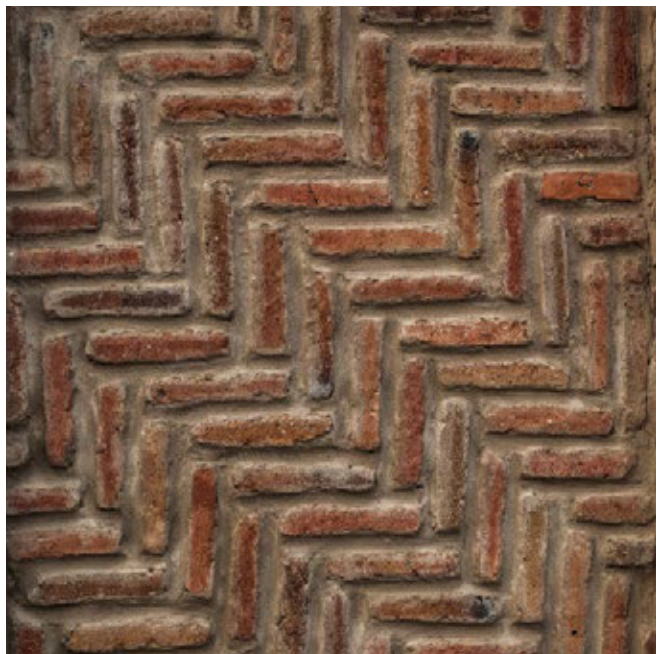


PRODUCT WE152
COLOR 106274 MUSHROOM
INSTALLED ASHLAR

PRODUCT NS231
COLOR 104711 CHAI
INSTALLED ASHLAR



PRODUCT SWTS 110
COLOR 104618 LUNAR
INSTALLED ASHLAR



Fingers mold, crafting into shape. Each form uniquely perfect. A practice from the past made present.



CARPET PRODUCT FARMLAND™
COLOR 106234 MUSHROOM
INSTALLED ASHLAR

LVT PRODUCT TEXTURED
WOODGRAINS
COLOR A00422 RUSTIC HICKORY
INSTALLED ASHLAR

CARPET PRODUCT
MONOCHROME™
COLOR 101822 MAUVE
INSTALLED MONOLITHIC



CARPET PRODUCT BROADLEAF™
COLOR 106226 MUSHROOM
INSTALLED ASHLAR

LVT PRODUCT NATURAL
WOODGRAINS
COLOR A00201 BLACK WALNUT
INSTALLED ASHLAR





PRODUCT GN161
COLOR 106258 MUSHROOM
INSTALLED ASHLAR

PRODUCT NS231
COLOR 104711 CHAI
INSTALLED ASHLAR



PRODUCT CLOUD COVER™
COLOR 105710 ROCKY SHORE
INSTALLED NON DIRECTIONAL





Warm tones and terra cotta.
Browns dominate,
dark and light together.



Stoneware Palette

- 1** PRODUCT GN160 COLOR 106250 MUSHROOM
- 2** LVT PRODUCT TEXTURED WOODGRAINS COLOR A00422 RUSTIC HICKORY
- 3** PRODUCT NS231 COLOR 104711 CHAI
- 4** PRODUCT PRAIRIE GRASS™ COLOR 106218 MUSHROOM
- 5** PRODUCT WE152 COLOR 106274 MUSHROOM
- 6** PRODUCT GN156 COLOR 106242 MUSHROOM
- 7** LVT PRODUCT NATURAL WOODGRAINS COLOR A00201 BLACK WALNUT
- 8** PRODUCT SWTS 110 COLOR 104618 LUNAR
- 9** PRODUCT CLOUD COVER COLOR 105710 ROCKY SHORE
- 10** PRODUCT BROADLEAF COLOR 106226 MUSHROOM
- 11** PRODUCT FARMLAND COLOR 106234 MUSHROOM
- 12** PRODUCT MONOCHROME COLOR 101822 MAUVE



White Oak







CARPET PRODUCT BROADLEAF COLOR 106231 WHEAT INSTALLED ASHLAR
CARPET PRODUCT ON LINE COLOR 105261 STORM INSTALLED MONOLITHIC
LVT PRODUCT NATURAL WOODGRAINS COLOR A00204 BEECH INSTALLED ASHLAR

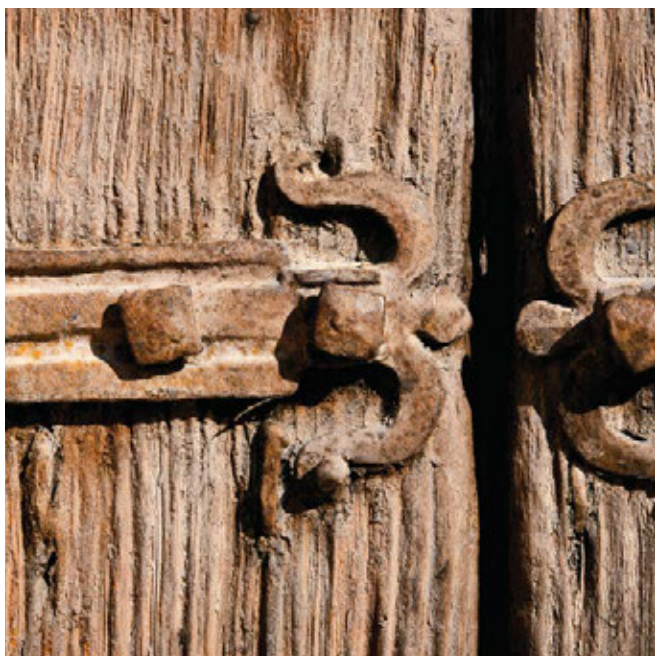
PRODUCT GN156
COLOR 106247 WHEAT
INSTALLED ASHLAR

PRODUCT WW870
COLOR 105349 RAFFIA WEFT
INSTALLED ASHLAR



CARPET PRODUCT RMS 607
COLOR 103573 IVORY
INSTALLED MONOLITHIC

LVT PRODUCT NATURAL
WOODGRAINS
COLOR A00204 BEECH
INSTALLED ASHLAR



Solid. Warm. Natural. In its smooth surface,
you can see the touch of time.



CARPET PRODUCT
PRAIRIE GRASS
COLOR 106223 WHEAT
INSTALLED ASHLAR

LVT PRODUCT NATURAL
WOODGRAINS
COLOR A00204 BEECH
INSTALLED ASHLAR



PRODUCT WE153
COLOR 104439 WHEAT
INSTALLED ASHLAR

PRODUCT WW880
COLOR 105366 SISAL LOOM
INSTALLED ASHLAR





PRODUCT FARMLAND
COLOR 106239 WHEAT
INSTALLED ASHLAR

PRODUCT NF400
COLOR 104492 WHEAT
INSTALLED ASHLAR



PRODUCT PLATFORM™
COLOR 9340 BATTLESHIP
INSTALLED BRICK





Sand and wheat and prairie grass.
Hand-in-hand with cool grey.

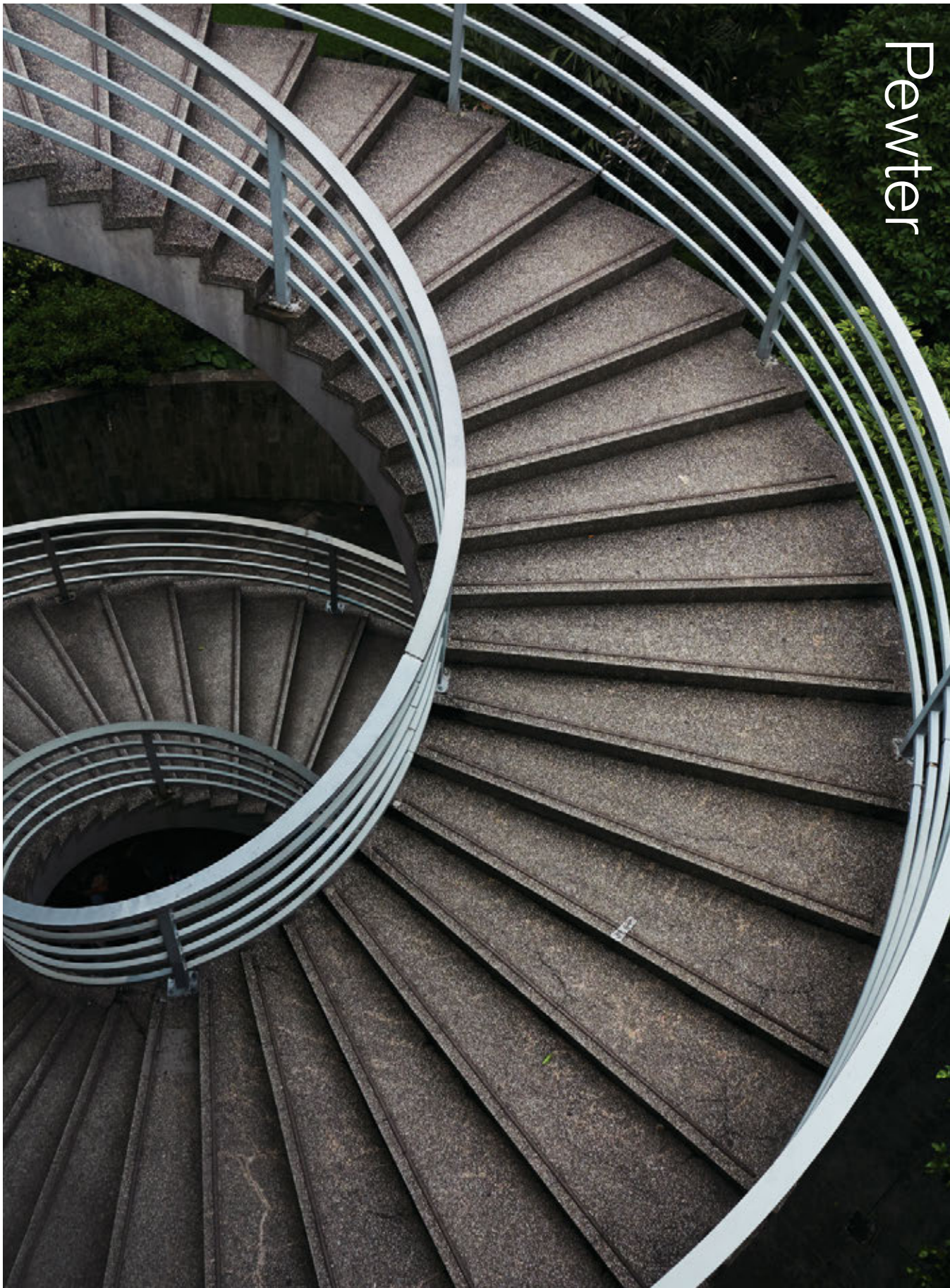


White Oak Palette

- 13** PRODUCT WE151 COLOR 104471 WHEAT
- 14** PRODUCT NF400 COLOR 104492 WHEAT
- 15** LVT PRODUCT NATURAL WOODGRAINS COLOR A00204 BEECH
- 16** PRODUCT PRAIRIE GRASS COLOR 106223 WHEAT
- 17** PRODUCT WE153 COLOR 104439 WHEAT
- 18** PRODUCT WW870 COLOR 105349 RAFFIA WEFT
- 19** PRODUCT GN156 COLOR 106247 WHEAT
- 20** PRODUCT ON LINE COLOR 105261 STORM
- 21** PRODUCT WW880 COLOR 105366 SISAL LOOM
- 22** PRODUCT BROADLEAF COLOR 106231 WHEAT
- 23** PRODUCT RMS 607 COLOR 103573 IVORY
- 24** PRODUCT FARMLAND COLOR 106239 WHEAT
- 25** PRODUCT PLATFORM COLOR 9340 BATTLESHIP



Pewter







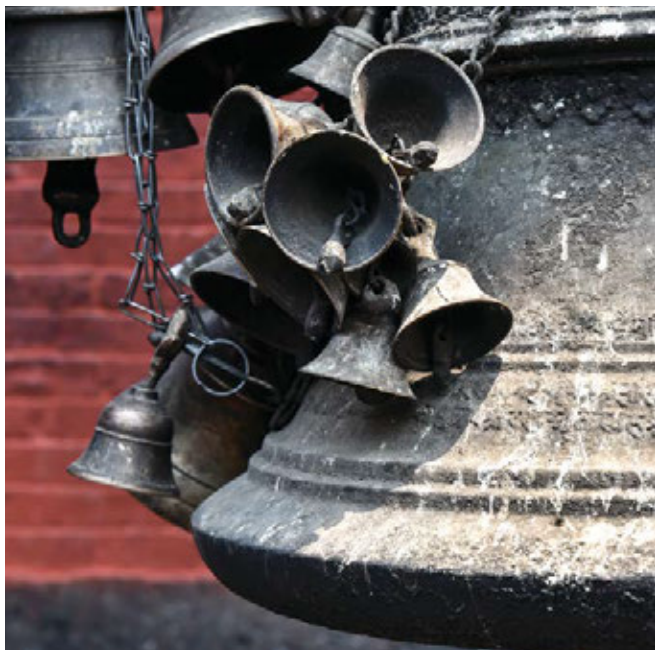
CARPET PRODUCT WE151 **COLOR** 106268 STERLING **INSTALLED** ASHLAR
CARPET PRODUCT NS231 **COLOR** 104714 DARJEELING **INSTALLED** MONOLITHIC
LVT PRODUCT NATURAL WOODGRAINS **COLOR** A00207 WASHED WHEAT **INSTALLED** ASHLAR

PRODUCT BROADLEAF
COLOR 106228 STERLING
INSTALLED ASHLAR

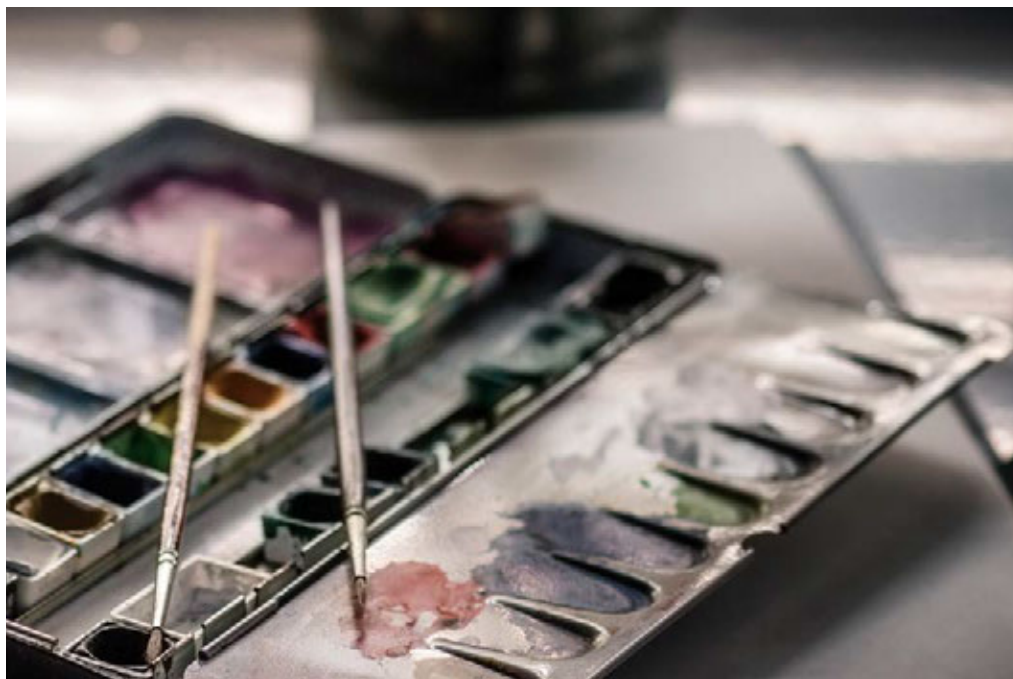
PRODUCT NS231
COLOR 104714 DARJEELING
INSTALLED ASHLAR



PRODUCT VEILED BRUSHWORK™
COLOR 106009 NEUTRAL
INSTALLED HERRINGBONE



Its beauty grows with age. Malleable. Metallic.
Refined into elegant, unexpected detail.



CARPET PRODUCT GN161

COLOR 106260 STERLING

INSTALLED ASHLAR

LVT PRODUCT NATURAL
WOODGRAINS

COLOR A00207 WASHED WHEAT

INSTALLED ASHLAR



PRODUCT GN160
COLOR 106252 STERLING
INSTALLED ASHLAR
PRODUCT SHADED PIGMENT™
COLOR 105989 NEUTRAL
GROUND
INSTALLED ASHLAR





PRODUCT WE153
COLOR 106284 STERLING
INSTALLED ASHLAR

PRODUCT WW870
COLOR 105345 CHARCOAL WEFT
INSTALLED ASHLAR



PRODUCT CLOUD COVER
COLOR 105716 AFTER DARK
INSTALLED NON DIRECTIONAL





27

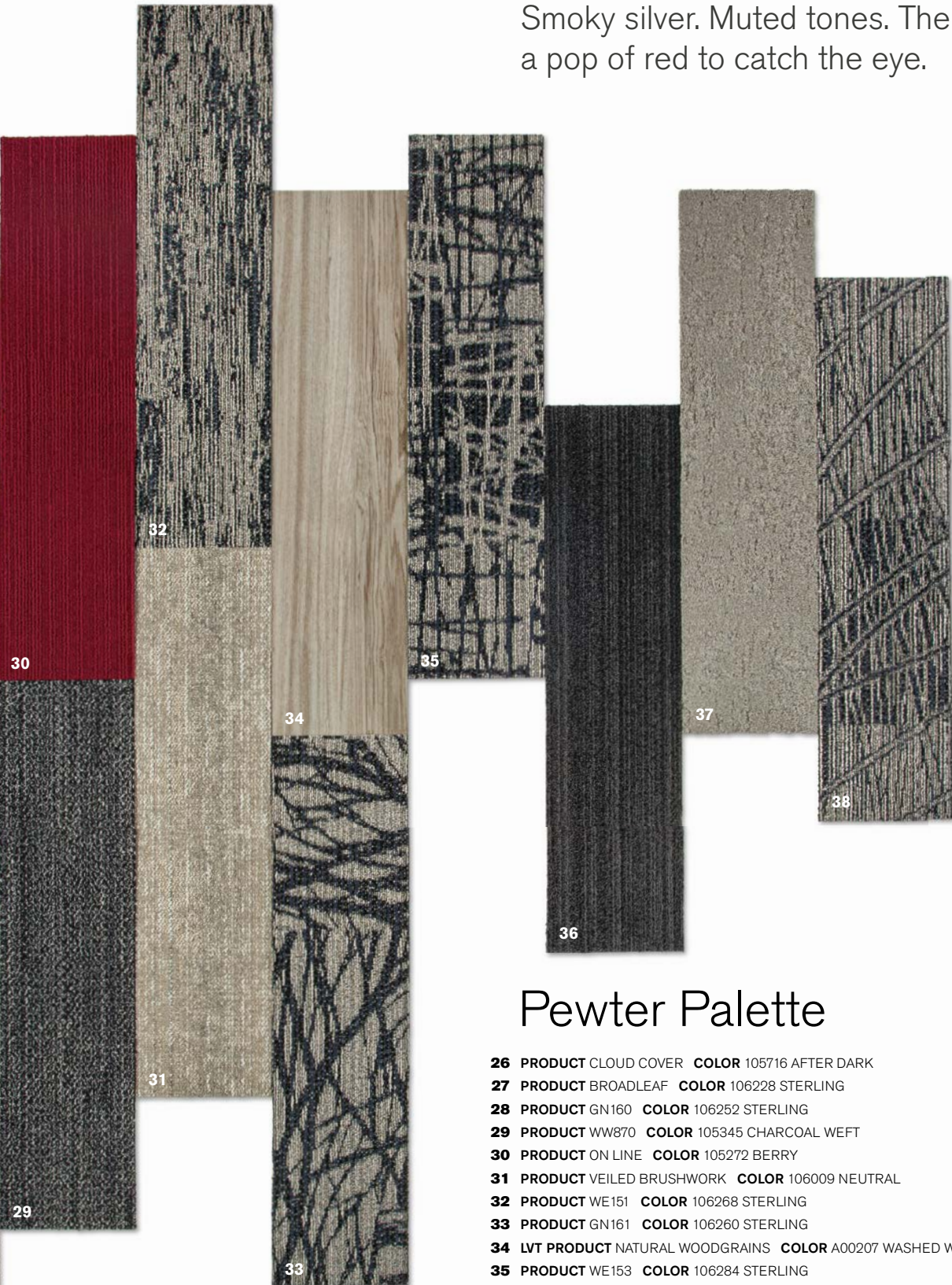


26



28

Smoky silver. Muted tones. Then,
a pop of red to catch the eye.



Pewter Palette

- 26** PRODUCT CLOUD COVER COLOR 105716 AFTER DARK
- 27** PRODUCT BROADLEAF COLOR 106228 STERLING
- 28** PRODUCT GN160 COLOR 106252 STERLING
- 29** PRODUCT WW870 COLOR 105345 CHARCOAL WEFT
- 30** PRODUCT ON LINE COLOR 105272 BERRY
- 31** PRODUCT VEILED BRUSHWORK COLOR 106009 NEUTRAL
- 32** PRODUCT WE151 COLOR 106268 STERLING
- 33** PRODUCT GN161 COLOR 106260 STERLING
- 34** LVT PRODUCT NATURAL WOODGRAINS COLOR A00207 WASHED WHEAT
- 35** PRODUCT WE153 COLOR 106284 STERLING
- 36** PRODUCT NS231 COLOR 104714 DARJEELING
- 37** PRODUCT SHADED PIGMENT COLOR 105989 NEUTRAL GROUND
- 38** PRODUCT WE152 COLOR 106276 STERLING

WE151 Specifications

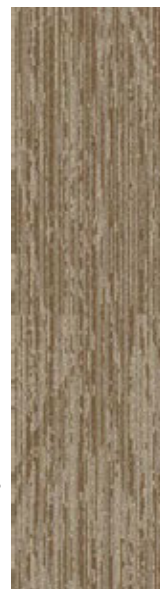
Modular, 25cm x 1m	125520AK00
Backing System	GlasBac™ Tile
Yarn Manufacturer	Aquafil
Yarn System	100% Recycled Content Nylon
Color System	100% Solution Dyed
Construction	Tufted Cut & Loop
Lifetime Antimicrobial	Intersept®
Soil/Stain Protection	Protekt ² ™
Pile Thickness	0.146 in., 3.7 mm
Pile Density	5,425
Total Recycled Content	76%
Indoor Air Quality	CRI Green Label Plus #GLP0820



106269 TOPAZ



104471 WHEAT



WE152 Specifications

Modular, 25cm x 1m	124990AK00
Backing System	GlasBac™ Tile
Yarn Manufacturer	Aquafil
Yarn System	100% Recycled Content Nylon
Color System	100% Solution Dyed
Construction	Tufted Cut & Loop
Lifetime Antimicrobial	Intersept®
Soil/Stain Protection	Protekt ² ™
Pile Thickness	0.146 in., 3.7 mm
Pile Density	5,425
Total Recycled Content	76%
Indoor Air Quality	CRI Green Label Plus #GLP0820



106277 TOPAZ



104423 WHEAT



WE153 Specifications

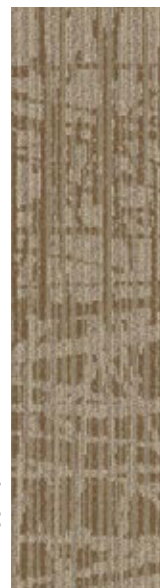
Modular, 25cm x 1m	125000AK00
Backing System	GlasBac™ Tile
Yarn Manufacturer	Aquafil
Yarn System	100% Recycled Content Nylon
Color System	100% Solution Dyed
Construction	Tufted Cut & Loop
Lifetime Antimicrobial	Intersept®
Soil/Stain Protection	Protekt ² ™
Pile Thickness	0.146 in., 3.7 mm
Pile Density	5,425
Total Recycled Content	76%
Indoor Air Quality	CRI Green Label Plus #GLP0820



106288 TOPAZ



104439 WHEAT





106267 GRANITE



106275 GRANITE



106283 GRANITE



106268 STERLING



106276 STERLING



106284 STERLING



106270 MOUSE



106278 MOUSE



106286 MOUSE



106266 MUSHROOM



106274 MUSHROOM



106282 MUSHROOM



104473 DOVE



104425 DOVE



104441 DOVE

GN156 Specifications

Modular, 25cm x 1m	125520AK00
Backing System	GlasBac™ Tile
Yarn Manufacturer	Aquafil
Yarn System	100% Recycled Content Nylon
Color System	100% Solution Dyed
Construction	Tufted Cut & Loop
Lifetime Antimicrobial	Intersept®
Soil/Stain Protection	Protekt ² ™
Pile Thickness	0.146 in., 3.7 mm
Pile Density	5,425
Total Recycled Content	72%
Indoor Air Quality	CRI Green Label Plus #GLP0820



106245 TOPAZ



106247 WHEAT



GN160 Specifications

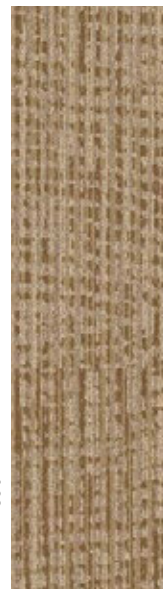
Modular, 25cm x 1m	125700AK00
Backing System	GlasBac™ Tile
Yarn Manufacturer	Aquafil
Yarn System	100% Recycled Content Nylon
Color System	100% Solution Dyed
Construction	Tufted Cut & Loop
Lifetime Antimicrobial	Intersept®
Soil/Stain Protection	Protekt ² ™
Pile Thickness	0.146 in., 3.7 mm
Pile Density	5,671
Total Recycled Content	77%
Indoor Air Quality	CRI Green Label Plus #GLP0820



106253 TOPAZ



106255 WHEAT

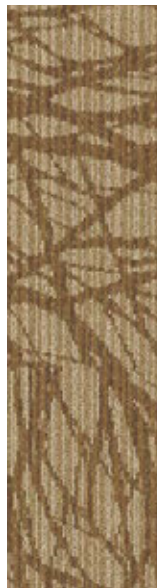


GN161 Specifications

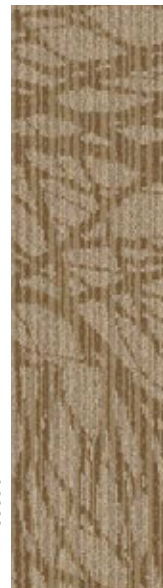
Modular, 25cm x 1m	125710AK00
Backing System	GlasBac™ Tile
Yarn Manufacturer	Aquafil
Yarn System	100% Recycled Content Nylon
Color System	100% Solution Dyed
Construction	Tufted Cut & Loop
Lifetime Antimicrobial	Intersept®
Soil/Stain Protection	Protekt ² ™
Pile Thickness	0.146 in., 3.7 mm
Pile Density	5,671
Total Recycled Content	77%
Indoor Air Quality	CRI Green Label Plus #GLP0820



106261 TOPAZ



106263 WHEAT





106243 GRANITE



106251 GRANITE



106259 GRANITE



106244 STERLING



106252 STERLING



106260 STERLING



106246 MOUSE



106254 MOUSE



106262 MOUSE



106242 MUSHROOM



106250 MUSHROOM



106258 MUSHROOM



106249 DOVE



106257 DOVE



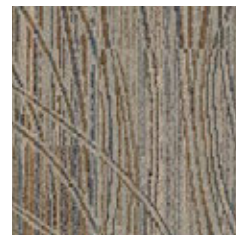
106265 DOVE

Prairie Grass™ Specifications

Modular, 50cm x 50cm	1234902500
Backing System	GlasBac™ Tile
Yarn Manufacturer	Universal
Yarn System	Post Consumer Content Nylon
Color System	100% Solution Dyed
Construction	Tufted Cut & Loop
Lifetime Antimicrobial	Intersept®
Soil/Stain Protection	Protekt ² ™
Pile Thickness	.142 in., 3.6 mm
Pile Density	5,831
Total Recycled Content	59-64%
Indoor Air Quality	CRI Green Label Plus #GLP0820



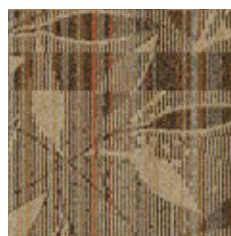
106221 TOPAZ



106223 WHEAT

Broadleaf™ Specifications

Modular, 50cm x 50cm	1234702500
Backing System	GlasBac™ Tile
Yarn Manufacturer	Universal
Yarn System	Post Consumer Content Nylon
Color System	100% Solution Dyed
Construction	Tufted Cut & Loop
Lifetime Antimicrobial	Intersept®
Soil/Stain Protection	Protekt ² ™
Pile Thickness	.118 in., 3 mm
Pile Density	6,712
Total Recycled Content	59-64%
Indoor Air Quality	CRI Green Label Plus #GLP0820



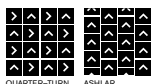
106229 TOPAZ



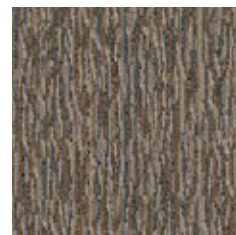
106231 WHEAT

Farmland™ Specifications

Modular, 50cm x 50cm	1234802500
Backing System	GlasBac™ Tile
Yarn Manufacturer	Universal
Yarn System	Post Consumer Content Nylon
Color System	100% Solution Dyed
Construction	Tufted Cut & Loop
Lifetime Antimicrobial	Intersept®
Soil/Stain Protection	Protekt ² ™
Pile Thickness	.12 in., 3 mm
Pile Density	6,000
Total Recycled Content	60-63%
Indoor Air Quality	CRI Green Label Plus #GLP0820



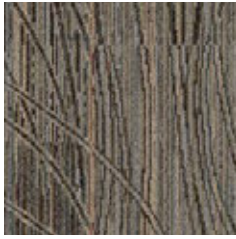
106237 TOPAZ



106239 WHEAT



106225 DOVE



106218 MUSHROOM



106222 MOUSE



106220 STERLING



106219 GRANITE



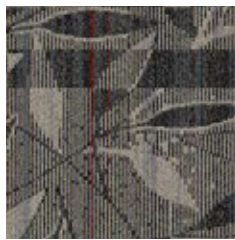
106233 DOVE



106226 MUSHROOM



106230 MOUSE



106228 STERLING



106227 GRANITE



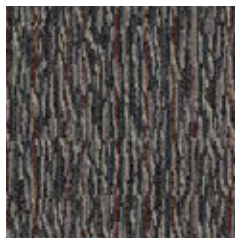
106241 DOVE



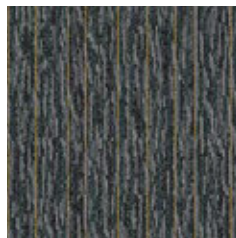
106234 MUSHROOM



106238 MOUSE



106236 STERLING



106235 GRANITE





PRODUCT WE152 COLOR 106277 TOPAZ INSTALLED ASHLAR PRODUCT FARMLAND COLOR 106237 TOPAZ INSTALLED ASHLAR

Why Our Modular Carpet?



Modular Flooring

Performance and flexibility. Interface's standard backing systems set the industry standard for modular performance. Tiles stay on the floor with no upcurl, no tapping and no rippling effect, yet are easy to selectively replace. Our modular carpet is easier to handle than bulky roll carpet and produces an average of just 3-4% waste compared to roll carpet's average of 14%. And it installs seamlessly with our LVT, no transition strips needed.



Carbon Neutral Floors™

Create a climate fit for life. All Interface flooring sold globally is third party verified carbon neutral. We've taken a holistic approach to achieve carbon neutrality, first through reducing the carbon footprint of our products and then using carbon offsets for the remainder, including the emissions from raw materials, our manufacturing processes and product use to end of life.



TacTiles™

No glue installation. Our revolutionary TacTiles installation system eliminates the need for glue, adhering tiles securely together to form a floor that "floats" for greater flexibility, easier replacement and long-term performance. The result? Less mess, less waste and virtually no VOCs, not to mention an environmental footprint that is over 90% lower than that of traditional glue adhesives.

Samples

Order samples at www.interface.com. You'll receive email order confirmations, 24/7 access to order status and more. Not near a computer? You can also request samples by calling one of the numbers below.

United States	Canada
1.877.605.1500	1.866.398.3192
Brazil	Latin America
+ 55 11 2196 0900	+ 52 55 6395 5100

www.interface.com

Register at www.interface.com to:

- Browse products and order samples
- View carpet in a variety of room scenes
- Browse floor designs, change colors, view as a grid or in a room, download and share
- Use our LEED Calculator
- Check order status and inventory availability
- Sign up to get the latest information on Interface products and news

InterCircle™ Sample Return

Help us close the loop on the carpet sampling process. Through our InterCircle Sample Return program, sample materials stay out of the landfill and are re-used as samples until it is time to recycle them into new carpet. By reducing sample production material and diverting old materials from the landfill, we can reduce our overall environmental footprint.

Call 1.877.605.1500 (U.S.) or 1.866.398.3192 (Canada) to order a sample return bag with a prepaid return label.

Third Party Certification



Bureau Veritas – All Interface flooring sold globally is third party verified carbon neutral.



Environmental Product Declaration (EPD) – A statement of product ingredients and environmental impacts over the entire life cycle of a product. A comprehensive life cycle assessment (LCA) is performed to ISO standards to develop an EPD, after which both the EPD and LCA must be third party verified.



Sustainable Assessment for Carpet – The only carpet sustainability standard in North America that evaluates the environmental impact of carpet for its entire lifecycle.



CRI Green Label Plus – An independent testing program that identifies carpet and adhesives with very low emissions of VOCs to help improve indoor air quality.



Intersept®

Mold protection. Our proprietary preservative, Intersept, protects our modular carpet against mold growth and odor-causing bacteria—guaranteed. Intersept treated carpet, with proper maintenance, shows no mold or bacterial growth when tested per the ASTM E2471 Standard Test Method. Intersept is EPA approved for safe use in carpet, water insoluble and contains no halogens, heavy metals, phenols or formaldehyde.



ReEntry™

Recyclable is now a reality. Through our ReEntry program and partnerships with our fiber suppliers and recycling centers throughout North America, separated Type 6 and 6,6 nylon are recycled into new 6 and 6,6 nylon while separated GlasBac™, GlasBacRE, similar competitive backings and our own LVT are recycled into new GlasBacRE non-virgin PVC backing using our Cool Blue™ technology. The result? Products with up to 89% total recycled content, including as much as 27% post-consumer content.



Sustainable Choice

Environmental responsibility. More than 95% of Interface products manufactured in the Americas carry the GreenCircle Certified Environmental Facts label, which has verified that standard Interface products are manufactured using 99% renewable energy and offer a minimum of 66% and 80% total recycled content when backed with GlasBac and GlasBacRE backing respectively.

Transparency and certified sustainability leadership come standard on all Interface products, including published ingredients in HPDs (Health Product Declarations) or Declare Labels. In addition, more than 99% of our products globally have a published EPD (Environmental Product Declaration), which evaluates consistent factors based on full life cycle assessment (LCA). And, all Interface products with GlasBacRE backing are certified to the Platinum level of the NSF/ANSI 140 Sustainable Assessment for Carpet. GlasBac backed products meet the Gold level. NSF/ANSI 140 certified products contribute toward a USGBC or CaGBC LEED credit.



All product specifications reflect averages derived from product sample testing, are subject to normal manufacturing and testing tolerances and inherent pattern variances, and may be changed without notice. For more information about these and other important attributes of the product(s) described herein, including recycled content and product warranty information, please see www.interface.com/disclaimer.

Printed on 50% post consumer waste (PCW) fiber manufactured using wind power.

We have tried our very best to accurately represent product colors. However, due to the nature of printed materials, color of actual products may vary slightly. Please request a sample to see actual product color.

www.interface.com

United States Headquarters

1280 West Peachtree Street NW
Atlanta, GA 30309
1.800.634.6032

Canadian Headquarters

233 Lahr Drive
Belleville, ON K8N 5S2
1.800.267.2149 ext.52128

Brazilian Headquarters

Rua Surubim, 577 - Conjuntos
73/74 7º Andar
04571-050 - São Paulo - SP
+ 55 11 2196 0900

Latin American Headquarters

Montes Urales # 415 Piso 6
Col. Lomas de Chapultepec
México City, D.F. 11000
Mexico
+ 52 55 6395 5100

CIM # IFS00840 7/2019



Climate change is undeniable. And reversible. Our mission is to prove it.
Join the #ClimateTakeBack and help create a climate fit for life.