

Interface®

MADE FOR EDUCATION

INTERFACE EDUCATION BROCHURE

NORA® RUBBER | LVT | CARPET TILE | FLOORING EXTRAS



MADE FOR FUN



Flooring is a key component of your school's culture and brand. It should also be designed to last. That's why Interface is proud to support and inspire your students and staff with an integrated system of carpet tile, LVT, and nora® rubber solutions.

Interface can also help you to make the most of any budget with both local and national purchasing contracts. And, we have QuickShip-ready products that can accommodate even the most aggressive timelines.

No matter what your flooring needs may be, Interface is your valuable partner from the floor up. It's just one more example of why we're Made for More™.



**EXPLORE OUR
SOLUTIONS FOR
ANY SPACE**

[click here](#)

AND FUNCTION

CAN A FLOOR BE MORE THAN A FLOOR?

Interface products stand up to the unique demands of educational environments, and our flooring solutions offer wide-ranging benefits.



RUTH CHERRY ELEMENTARY SCHOOL IN ROYSE CITY, TX
ARCHITECT/DESIGN: VLK ARCHITECTS PHOTO: © CHAD M. DAVIS, AIA

MADE FOR ACADEMIC SUCCESS

- Combat fatigue with comfort underfoot
- Improve indoor air quality with low VOC emissions
- Reduce unwanted noise
- Define space and support wayfinding

MADE FOR EASY OWNERSHIP

- Support high-function spaces that can't afford downtime with solutions that offer ease of maintenance, repair, and replacement
- Eliminate the need for stripping or waxing
- Resist stains and scratches



FRITS PHILIPS SECONDARY SCHOOL-LYCEUM, THE NETHERLANDS
PHOTO: © STUDIO BEELDWERKEN



AVANS UNIVERSITY OF APPLIED SCIENCES, THE NETHERLANDS
PHOTO: © RIESJARD SCHROPP WWW.SCHROPP.NL

MADE FOR REDUCING YOUR ENVIRONMENTAL IMPACT

- Reduce your overall carbon footprint, while also contributing to the success of students and staff through a better-built environment
- Implement real-world waste diversion strategies

YOUR DESIGN PARTNER

WE MAKE FINDING DESIGN
SOLUTIONS EASIER WITH
INTERFACE DESIGN STUDIO

Our expert designers know Interface products inside and out—and their services are complimentary. From concept to completion, they can work closely with you to create distinct designs that meet your vision and budget no matter how large or small the project. The to-scale floor plan layouts can project overall waste and act as an installation guide for the flooring contractor. Plus, they include the embodied carbon calculation, making it easier to design with carbon footprint in mind.

From classrooms to labs, our integrated system of flooring solutions works seamlessly in virtually any educational space.

Let us bring your vision to life with products that stand up and stand out across your facility.



**FIND YOUR
SALES REP
TO START**

➤ [click here](#)



TECHNICAL SUPPORT



YOU NEED MORE THAN A FLOORING VENDOR — YOU NEED A PARTNER

As your single-source provider, we can support your project every step of the way, from design to post-installation for the life of the product. Consulting with you, we can help create a maintenance plan to deliver a greater return on investment and a lower total cost of ownership.

Let us be your school's trusted academic flooring advisor, allowing you to make the most of your budget and create spaces that are Made for More.



HIGHER EDUCATION CASE STUDY

GEORGIA TECH STUDENT HOUSING

Location	Atlanta, Georgia
Facility Type	Residence Hall
Project Requirements	Make residential spaces feel lighter, more accessible, and comfortable. More like home.
Interface Products	Bee's Knees™ in Fawn; Bitrate™ in Dark Aqua and Dark Green; Hard Drive™ in Pewter; Step Aside™ in Indigo; Studio Set™ LVT in Pepper, Pewter, Marigold, and Lime
FLOR® Products	To Dye For in Bone
Architect/Designers	Polly Patton, Senior Interior Designer, GA Tech



BROWSE
IMAGES AND
LEARN MORE

click here



K-12 CASE STUDY

OCONOMOWOC AREA SCHOOL DISTRICT

Location	Oconomowoc, Wisconsin
Facility Type	School
Project Requirements	Flexible classroom designs that can handle everything from quiet time to craft time and anything in-between, with a heavy emphasis on modularity and mobility.
Products	On Line™ in Lime, Cobalt, and Aquamarine; Harmonize™ in Gull; Ground Waves™ in custom color; Ground Waves Verse™ in custom color; Flagstone™, Kerbstone™ and Sett in Stone™ in Granite; Moss in Stone™ in Granite Edge; Moss™ in Granite/Moss
Architect/Designers	Eppstein Uhen Architects



BROWSE
IMAGES AND
LEARN MORE

click here



CARPET TILE

EVERYTHING YOU LOVE ABOUT SOFT FLOORING
BUT WITH THE FLEXIBILITY OF TILE.



BIRMINGHAM CITY UNIVERSITY, UK

LUXURY VINYL TILE

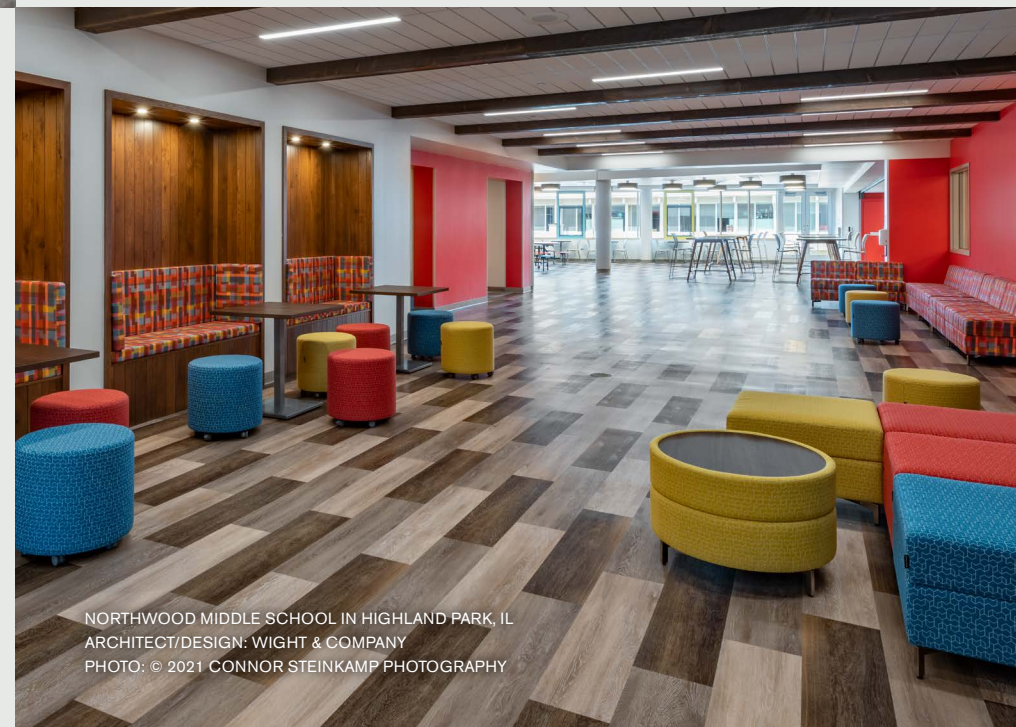
BRING YOUR VISION TO LIFE WITH TWO DURABLE LVT
OPTIONS—3.0 MM LVT OR 4.5 MM SOUND CHOICE™ LVT.



HUDDERSFIELD UNIVERSITY, UK



- Ease of installation and replacement with our glue-free TacTiles™ installation system
- Dense construction with premium recycled content nylon fiber
- Solution-dyed fibers to withstand harsh substances
- Intersept™, our proprietary preservative, is permanently incorporated into the backing to protect carpet tiles against mold growth and odor—even at the seams
- Interface's i2™ styles have mergeable dye lots that facilitate selective replacement



NORTHWOOD MIDDLE SCHOOL IN HIGHLAND PARK, IL
ARCHITECT/DESIGN: WIGHT & COMPANY
PHOTO: © 2021 CONNOR STEINKAMP PHOTOGRAPHY

4.5 mm Sound Choice

- Greater impact sound reduction of IIC 64
- GreenCircle certified 100% recyclable through ReEntry™
- Ceramor™ coating resists slips, scuffs, and scratches
- 39% pre-consumer recycled content

3.0 mm

- Impact sound reduction of IIC 56
- Ceramor™ coating resists slips, scuffs, and scratches
- 39% pre-consumer recycled content

nora RUBBER

SO DURABLE, IT CAN LAST FOR DECADES—
AND STILL LOOK GOOD.



GO-DO- MORE FLOORS

COMPLETE YOUR PERFECT FLOOR PLAN WITH A
COMPREHENSIVE SELECTION OF FLOORING EXTRAS.

Walk-off carpet

Make the most of your entryways with styles that grab dirt and debris before it can be tracked inside.

interface.com/steprepeat

nora stairwell solutions

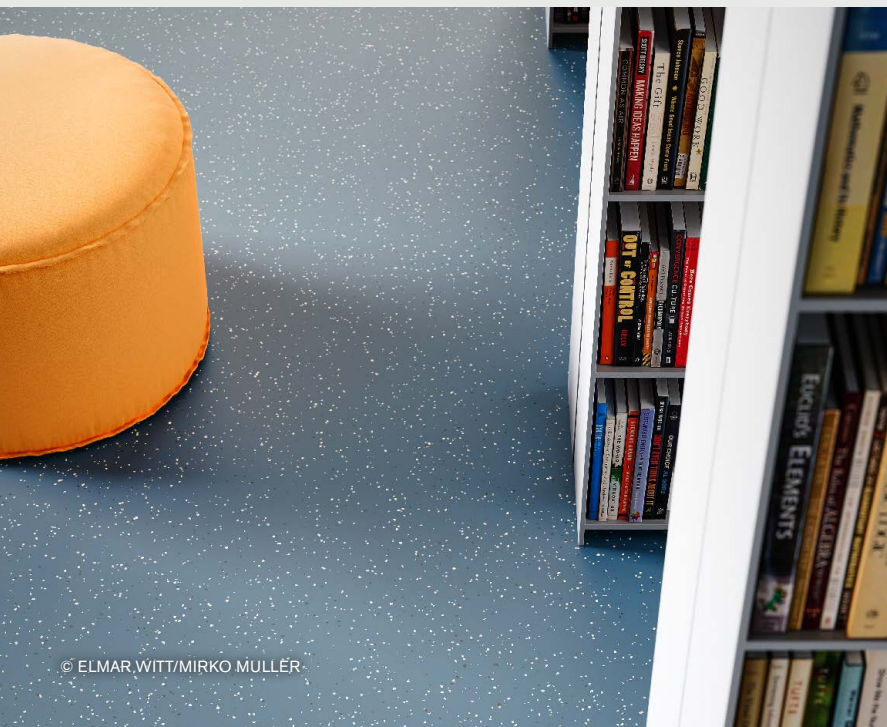
All-in-one norament® stairtreads install quickly and withstand heavy traffic—or pair your favorite nora flooring with a nora stair nosing.

nora.com/stairtreads

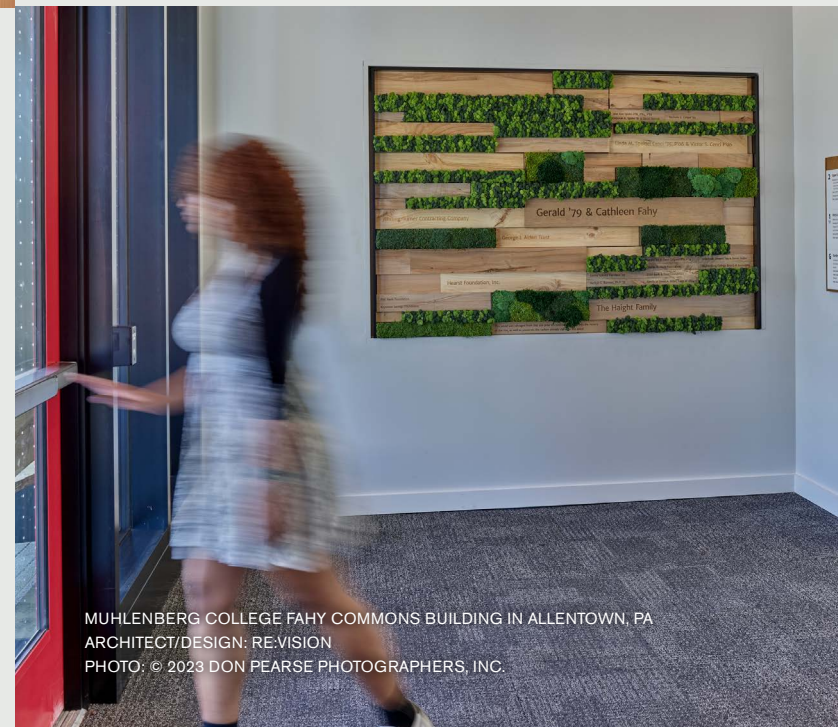
nora accessories

A range of wall base, welds, and installation options add finishing details and ensure your installation is a success.

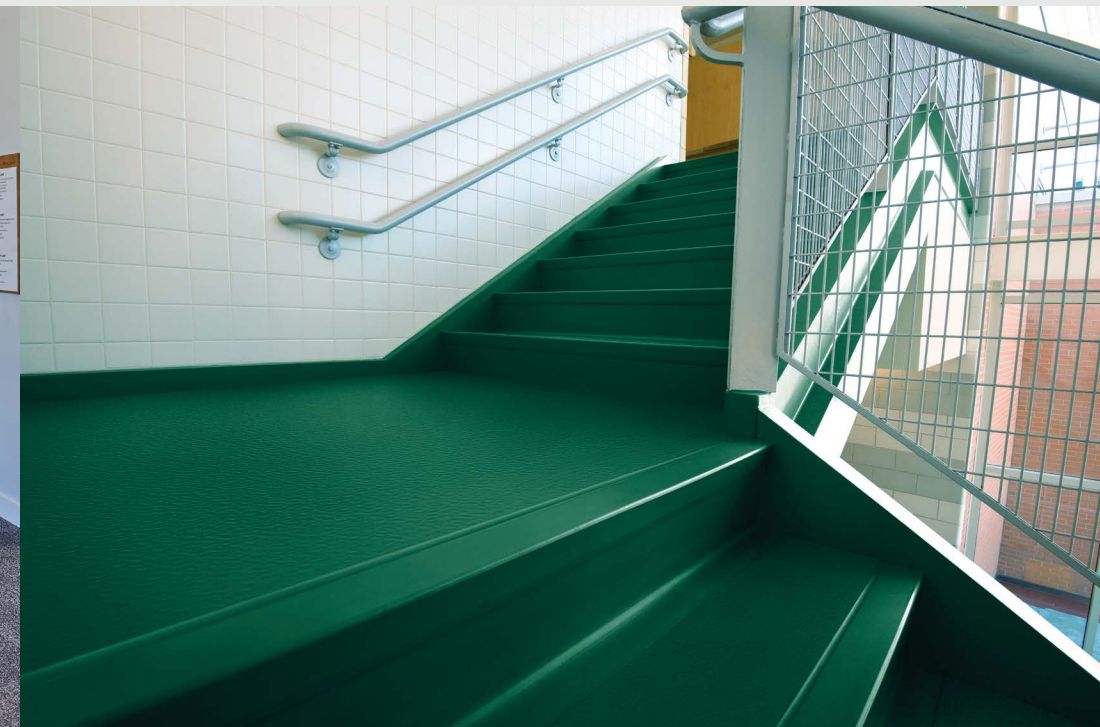
nora.com/flooringaccessories



- Non-porous surface provides chemical and stain resistance
- Helps to reduce slips, trips, and falls
- Ease of maintenance and reparability
- Impact sound reduction of up to Δ IIC 23



MUHLENBERG COLLEGE FAHY COMMONS BUILDING IN ALLENTOWN, PA
ARCHITECT/DESIGN: RE:VISION
PHOTO: © 2023 DON PEARSE PHOTOGRAPHERS, INC.





HEALTHY & SUSTAINABLE OPTIONS FOR EVERY BUDGET

Did you know that flooring can be one of the most significant sources of carbon emissions in your facility? Interface is committed to making the world a better place, and we can consult with you to help you create and implement your own unique low-carbon design.

The Interface carbon plan is simple: **Avoid. Reduce. Store. Inspire.**

When you choose flooring from Interface, you're selecting a single-source solution that will reduce your carbon footprint and contribute to a better-built environment for students and staff.

- Our ReEntry™ Program enables reclamation of used flooring and installation waste.
- Interface flooring products are third-party certified for low VOC emissions through Green Label Plus, GREENGUARD Gold, or FloorScore® and contribute to improved air quality.
- Many Interface products incorporate biophilic design, bringing elements of nature into the classroom and contributing to stress reduction and enhanced learning outcomes.



*let's plan for a better
world, together*

LEARN HOW
WE'RE 'ALL IN'



➤ click here

nora®, norament®, and noraplan® are trademarks owned by nora systems GmbH and registered in the United States, Canada, and other countries. Cradle to Cradle Certified® is a registered trademark of the Cradle to Cradle Products Innovation Institute. Other labels used here are trademarks of their respective owners.

Cover Image: Avans University of Applied Sciences, The Netherlands

interface.com

United States Headquarters

1280 West Peachtree Street NW
Atlanta, GA 30309
1.800.634.6032

Canadian Headquarters

233 Lahr Drive
Belleville, ON K8N 5S2
1.800.267.2149 ext.52128

CIM# IFS00967 08/2024



Climate change is undeniable. And reversible. Our mission is to prove it. **Join the #ClimateTakeBack and help create a climate fit for life.**