

World Woven Two



Interface®

World Woven™ Two

In Interface studios around the world, designers work together to decipher trend and interpret it through the lens of local textile histories – from Japan to the UK, the Americas to Australia. In this process, one thing becomes very clear: the most elegant solutions are often the simplest. World Woven Collection™, the 2016 addition to our global library of styles, is deeply influenced by this lesson.

Uncomplicated, hand crafted and imperfect are often the terms of beauty today. In a way, this seems more authentic and more accessible. Familiar objects conjure a sense of security, comfort and well-being. The World Woven Collection draws heavily from textile patterns and woven structures that embody all these things.

At the core of the collection are four patterns that were inspired by classic woolen textiles, rooted in the traditions of plain woven fabrics made for fashion, upholstery and home accessories that are still so essential today. The colours recall undyed wools with just a bit of contrast.

To complement this carefully curated set, are two colour studies – one soft, less manicured and one flat and orderly. Following nature's method, each is comprised of many hues mingled together to create a more vivid rendering of colour.

For the first time, we've attached three accent styles, designed especially for the World Woven Collection. Collins Cottage™ and Scottish Sett™ revive the noble houndstooth and plaid while Mod Café™ renews the playful and optimistic patterns of the 1950s. These complimentary patterns can be included in a floor composition to define space, create area rugs or combine with the balance of the collection to add interest and detail.

World Woven Collection is six Skinny Planks™ and three accent styles, each with 8 colours and made with 100% recycled content nylon. All nine styles weave together our current predilections with memories we share of some of the most enduring textiles of the past. They are simple, elegant fabrics that keep us warm and lift our spirits.





PRODUCT WW865 COLOUR DALE WARP PRODUCT WW895
COLOUR DALE WEAVE INSTALLED PATTERN BY TILE



PRODUCT WW860 COLOUR BLACK TWEED
PRODUCT WW865 COLOUR HIGHLAND WARP
PRODUCT WW895 COLOUR HIGHLAND WEAVE INSTALLED PATTERN BY TILE



PRODUCT WW880 COLOUR FLANNEL LOOM INSTALLED ASHLAR
PRODUCT MOD CAFE™ COLOUR STAR LINEN INSTALLED MONOLITHIC





PRODUCT WW860 COLOUR BROWN TWEED INSTALLED ASHLAR

WW860 Colour Range



8109001 LINEN TWEED



8109002 FLANNEL TWEED



8109003 CHARCOAL TWEED



8109004 BLACK TWEED



8109005 BROWN TWEED



8109006 NATURAL TWEED



8109007 RAFFIA TWEED

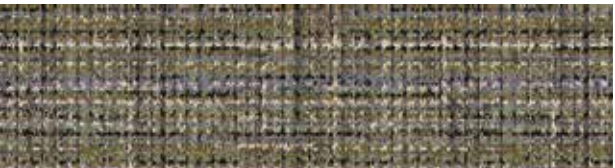


8109008 SISAL TWEED

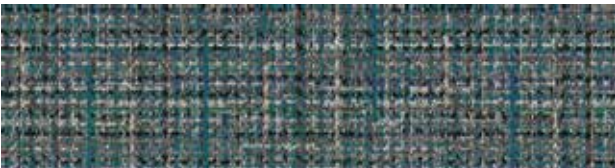


PRODUCT WW895 COLOUR HEATHER WEAVE INSTALLED ASHLAR

WW895 Colour Range



8114001 HEATHER WEAVE



8114002 LOCH WEAVE



8114003 HIGHLAND WEAVE



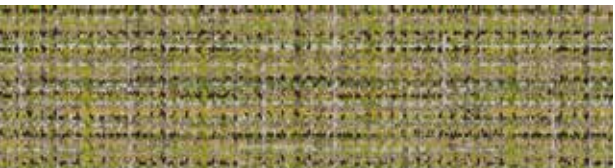
8114004 MOORLAND WEAVE



8114005 FUCHSIA WEAVE



8114006 AUTUMN WEAVE



8114007 GLEN WEAVE



8114008 DALE WEAVE

WW865 Colour Range



8110001 HEATHER WARP



8110002 LOCH WARP



8110003 HIGHLAND WARP



8110004 MOORLAND WARP



8110005 FUCHSIA WARP



8110006 AUTUMN WARP



8110007 GLEN WARP



8110008 DALE WARP



PRODUCT WW865 COLOUR HEATHER WARP INSTALLED ASHLAR



PRODUCT WW865 COLOUR LOCH WARP
PRODUCT WW870 COLOUR BLACK WEFT INSTALLED PATTERN BY TILE



PRODUCT WW895 COLOUR FUCHSIA WEAVE PRODUCT COLLINS COTTAGE™
COLOUR HOUND CHARCOAL INSTALLED PATTERN BY TILE



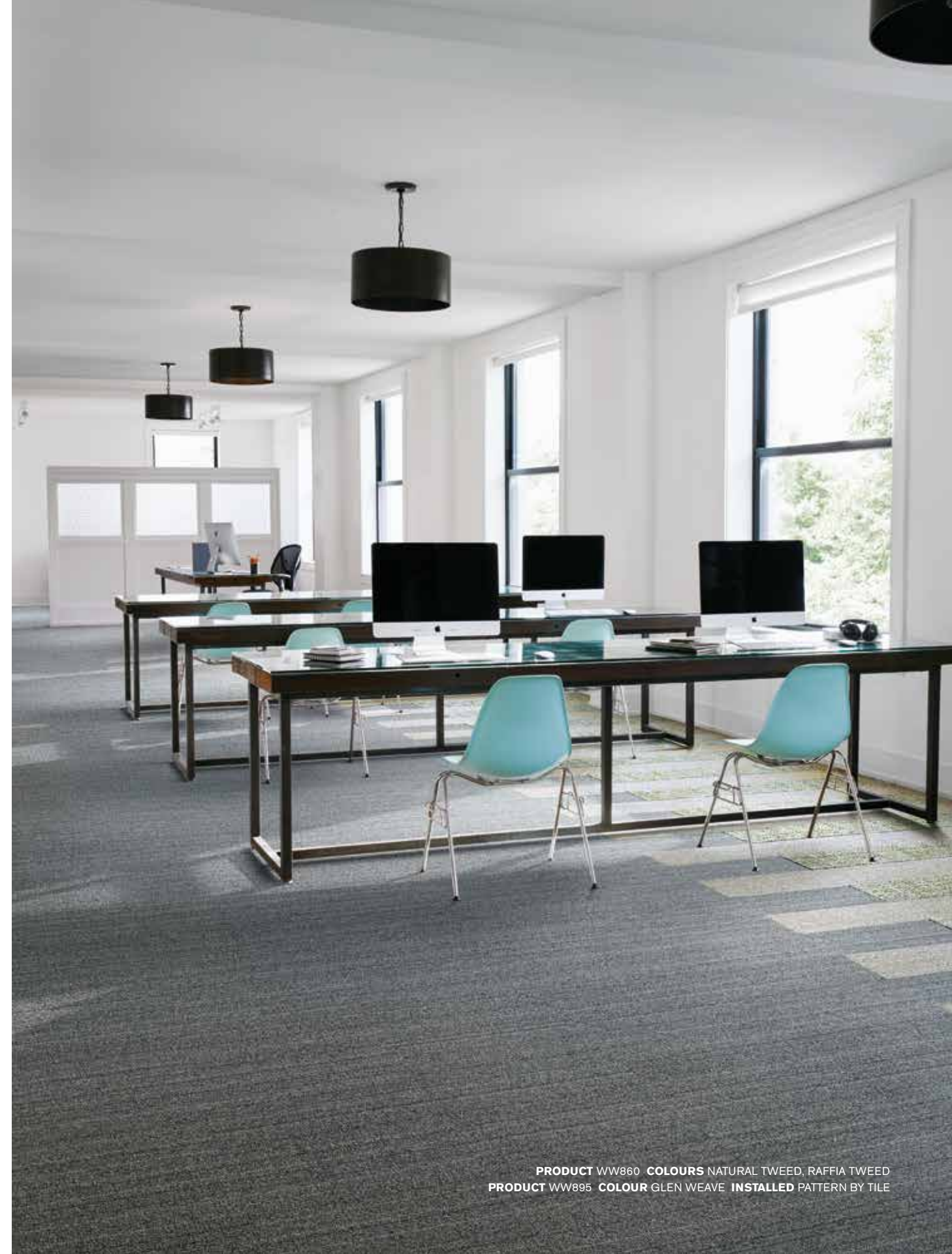
PRODUCT WW865 COLOUR LOCH WARP
PRODUCT WW880 COLOUR CHARCOAL LOOM INSTALLED ASHLAR



PRODUCT WW865 COLOUR MOORLAND WARP
PRODUCT WW890 COLOUR FLANNEL DOBBY INSTALLED ASHLAR



PRODUCT WW860 COLOUR LINEN TWEED INSTALLED ASHLAR



PRODUCT WW860 COLOURS NATURAL TWEED, RAFFIA TWEED
PRODUCT WW895 COLOUR GLEN WEAVE INSTALLED PATTERN BY TILE



PRODUCT SCOTTISH SETT COLOUR PLAID CHARCOAL
PRODUCT WW860 COLOUR CHARCOAL TWEED INSTALLED PATTERN BY TILE



PRODUCT WW860 COLOUR BLACK TWEED
PRODUCT WW865 COLOUR GLEN WARP
PRODUCT WW895 COLOUR MOORLAND WEAVE INSTALLED PATTERN BY TILE



PRODUCT WW860 COLOUR SISAL TWEED
PRODUCT WW890 COLOUR SISAL DOBBY INSTALLED PATTERN BY TILE



PRODUCT WW865 COLOUR AUTUMN WARP INSTALLED ASHLAR



Scottish Sett™ Colour Range



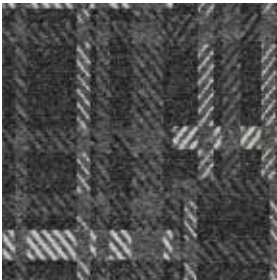
8151001 PLAID LINEN



8151002 PLAID FLANNEL



8151003 PLAID CHARCOAL



8151004 PLAID BLACK



8151005 PLAID BROWN



8151006 PLAID NATURAL



8151007 PLAID RAFFIA



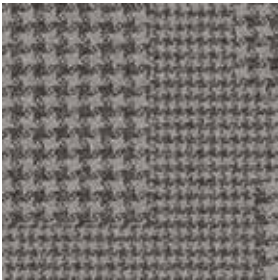
8151008 PLAID SISAL

PRODUCT SCOTTISH SETT **COLOUR** PLAID CHARCOAL
INSTALLED NON DIRECTIONAL **PRODUCT** COLLINS COTTAGE
COLOUR HOUND CHARCOAL **INSTALLED** NON DIRECTIONAL

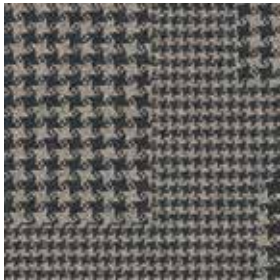
Collins Cottage™ Colour Range



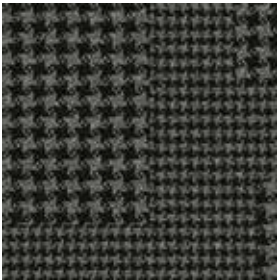
8152001 HOUND LINEN



8152002 HOUND FLANNEL



8152003 HOUND CHARCOAL



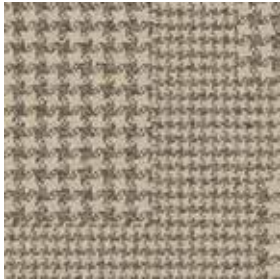
8152004 HOUND BLACK



8152005 HOUND BROWN



8152006 HOUND NATURAL



8152007 HOUND RAFFIA



8152008 HOUND SISAL

Mod Café™ Colour Range



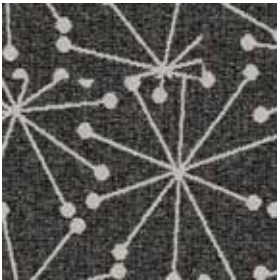
8150001 STAR LINEN



8150002 STAR FLANNEL



8150003 STAR CHARCOAL



8150004 STAR BLACK



8150005 STAR BROWN



8150006 STAR NATURAL



8150007 STAR RAFFIA

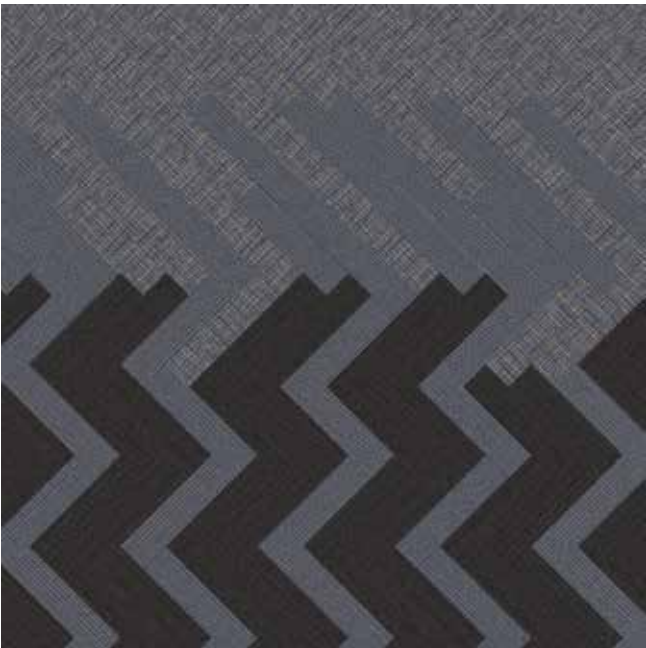
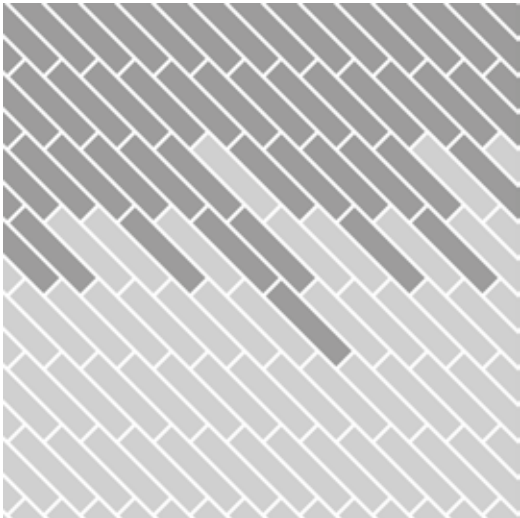


8150008 STAR SISAL

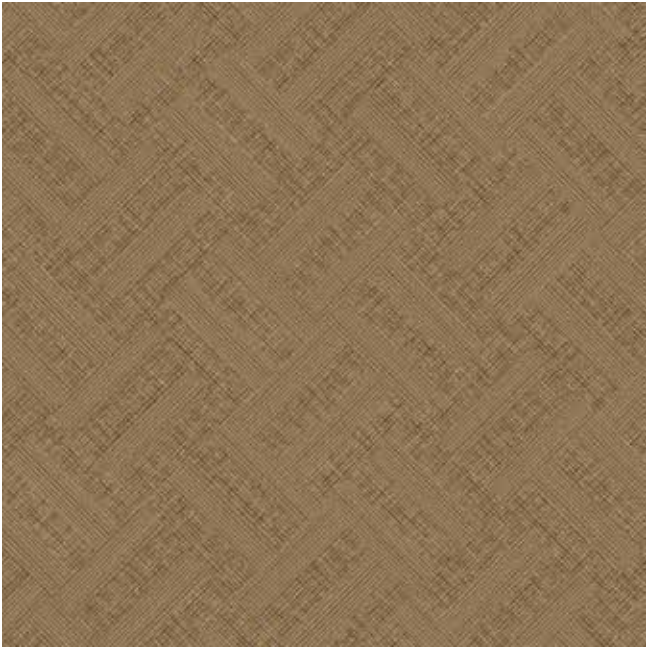
Design Ideas Below are floor layouts showing how to create the design ideas shared in several of the images featured in this brochure.



PRODUCT WW865 COLOUR HIGHLAND WARP
PRODUCT WW895 COLOUR HIGHLAND WEAVE INSTALLED PATTERN BY TILE



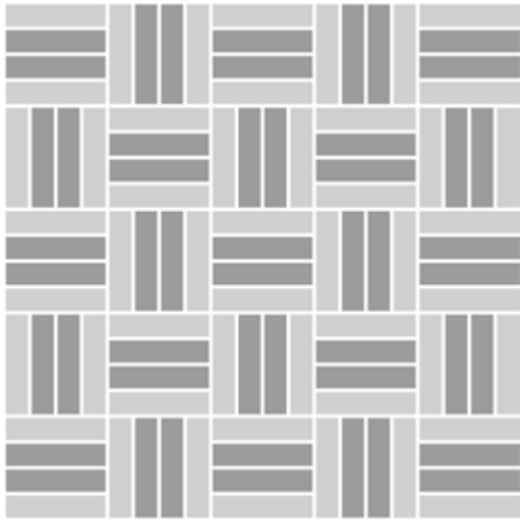
PRODUCT WW860 COLOUR BLACK TWEED
PRODUCT WW865 COLOUR HIGHLAND WARP
PRODUCT WW895 COLOUR HIGHLAND WEAVE INSTALLED PATTERN BY TILE



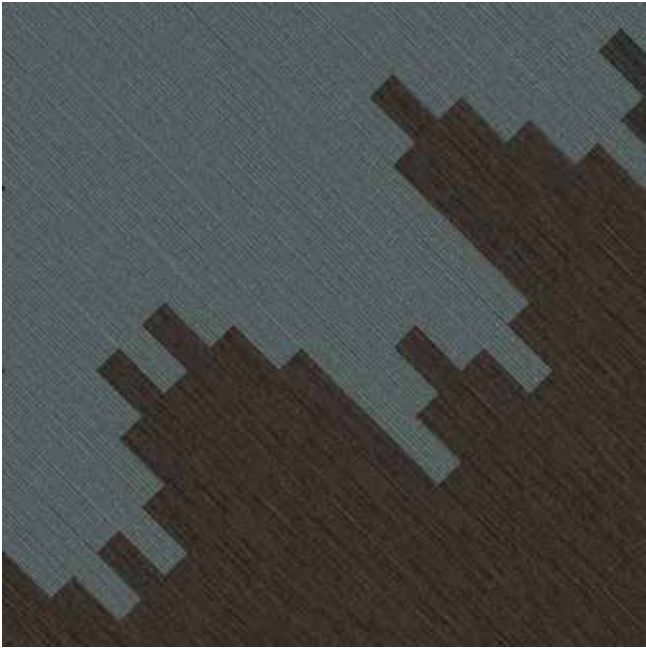
PRODUCT WW865 COLOUR DALE WARP PRODUCT WW895
COLOUR DALE WEAVE INSTALLED PATTERN BY TILE



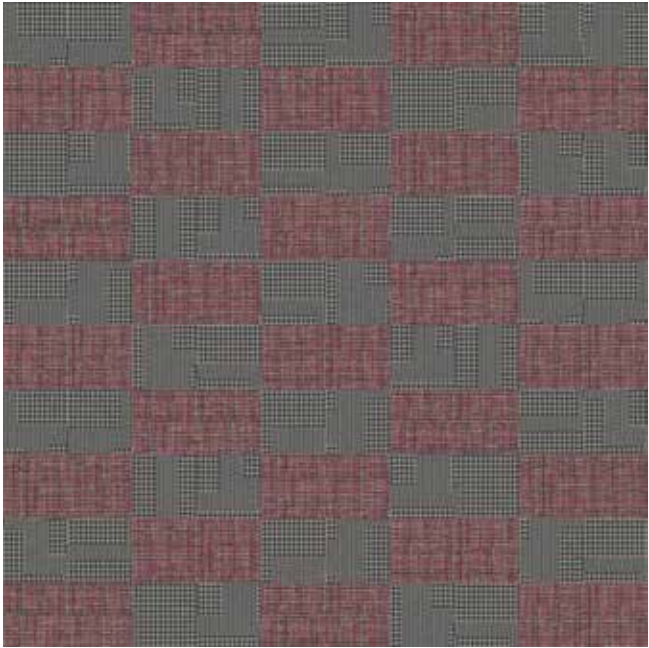
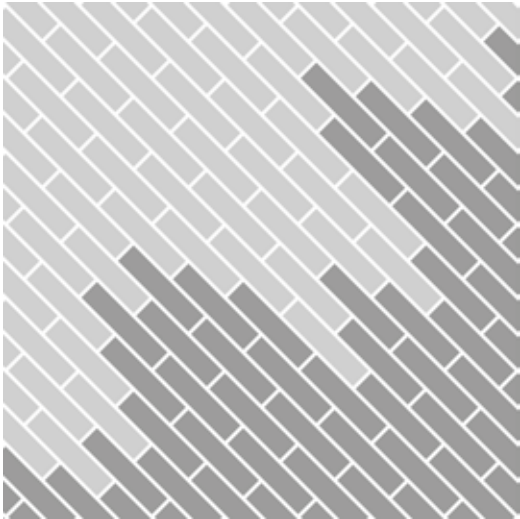
PRODUCT WW880 COLOUR NATURAL LOOM PRODUCT WW895
COLOUR AUTUMN WEAVE INSTALLED PATTERN BY TILE



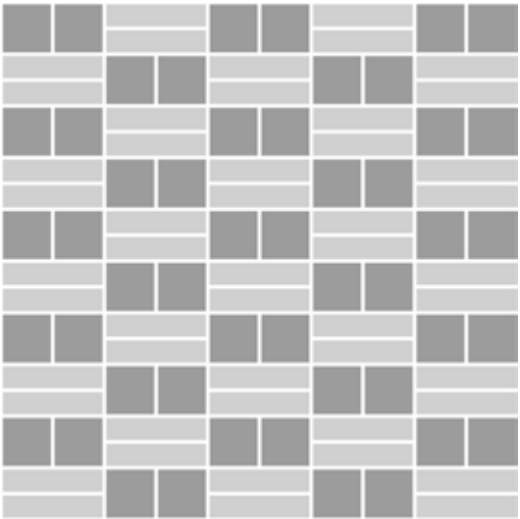
Design Ideas Below are floor layouts showing how to create the design ideas shared in several of the images featured in this brochure.



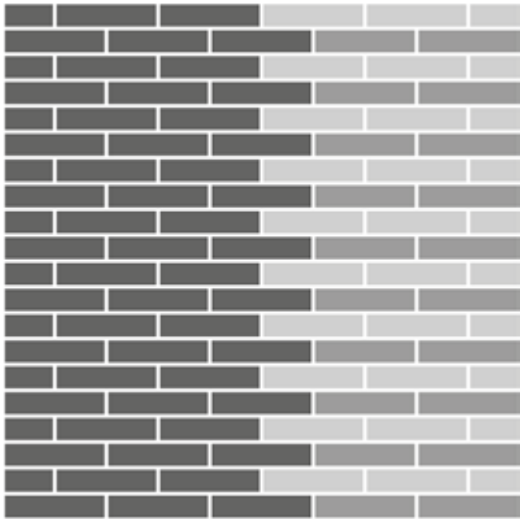
PRODUCT WW865 **COLOUR** LOCH WARP
PRODUCT WW870 **COLOUR** BLACK WEFT **INSTALLED** PATTERN BY TILE



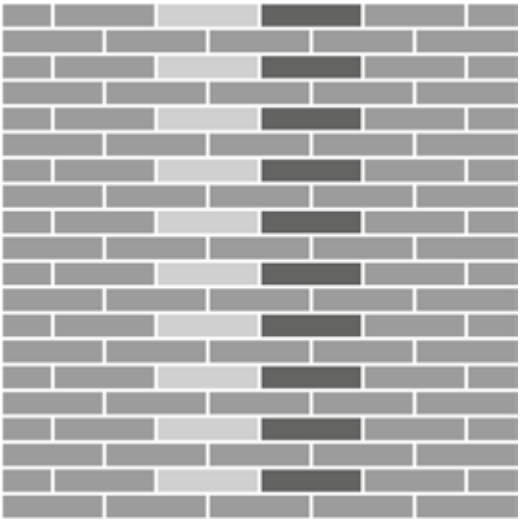
PRODUCT WW895 **COLOUR** FUCHSIA WEAVE **PRODUCT** COLLINS COTTAGE™
COLOUR HOUND CHARCOAL **INSTALLED** PATTERN BY TILE



PRODUCT WW860 **COLOURS** NATURAL TWEED, RAFFIA TWEED
PRODUCT WW895 **COLOUR** GLEN WEAVE **INSTALLED** PATTERN BY TILE



PRODUCT WW860 **COLOUR** BLACK TWEED
PRODUCT WW865 **COLOUR** GLEN WARP
PRODUCT WW895 **COLOUR** MOORLAND WEAVE **INSTALLED** PATTERN BY TILE



Specifications

WW870™

Style Code	8111
Product Construction	Tufted Textured Loop
Yarn System	100% Recycled Solution Dyed Nylon
Machine Gauge	1/12
Pile Thickness	3.0mm +/- 0.5mm
Total Thickness	6.5mm +/- 0.5mm
Tile Size	25cm x 100cm
Area of Use	Commercial – Heavy Use
ACCS (Australia Only)	Commercial Extra Heavy Duty & Stairs
Lifetime Antimicrobial	Intersept®
Soil/Stain Protection	Protekt ² ®
Installation Methods	Ashlar, Herringbone



ASHLAR



HERRINGBONE

WW880™

Style Code	8112
Product Construction	Tufted Textured Tip Sheared Loop
Yarn System	100% Recycled Solution Dyed Nylon
Machine Gauge	1/10
Pile Thickness	3.0mm +/- 0.5mm
Total Thickness	7.0mm +/- 0.5mm
Tile Size	25cm x 100cm
Area of Use	Commercial – Heavy Use
ACCS (Australia Only)	Commercial Extra Heavy Duty & Stairs
Lifetime Antimicrobial	Intersept®
Soil/Stain Protection	Protekt ² ®
Installation Methods	Ashlar, Herringbone



ASHLAR



HERRINGBONE

WW890™

Style Code	8113
Product Construction	Tufted Patterned Textured Loop
Yarn System	100% Recycled Solution Dyed Nylon
Machine Gauge	1/10
Pile Thickness	3.5mm +/- 0.5mm
Total Thickness	7.5mm +/- 0.5mm
Tile Size	25cm x 100cm
Area of Use	Commercial – Heavy Use
ACCS (Australia Only)	Commercial Extra Heavy Duty & Stairs
Lifetime Antimicrobial	Intersept®
Soil/Stain Protection	Protekt ² ®
Installation Methods	Ashlar, Herringbone



ASHLAR



HERRINGBONE

Mod Café™

Style Code	8150
Product Construction	Tufted Textured Loop
Yarn System	100% Recycled Solution Dyed Nylon
Machine Gauge	1/10
Pile Thickness	4.5mm +/- 0.5mm
Total Thickness	8.0mm +/- 0.5mm
Tile Size	50cm x 50cm
Area of Use	Commercial – General Use
ACCS (Australia Only)	Commercial Extra Heavy Duty & Stairs
Lifetime Antimicrobial	Intersept®
Soil/Stain Protection	Protekt ² ®
Installation Methods	Monolithic



MONOLITHIC

Collins Cottage™

Style Code	8152
Product Construction	Tufted Textured Loop
Yarn System	100% Recycled Solution Dyed Nylon
Machine Gauge	1/10
Pile Thickness	4.0mm +/- 0.5mm
Total Thickness	8.0mm +/- 0.5mm
Tile Size	50cm x 50cm
Area of Use	Commercial – General Use
ACCS (Australia Only)	Commercial Extra Heavy Duty & Stairs
Lifetime Antimicrobial	Intersept®
Soil/Stain Protection	Protekt ² ®
Installation Methods	Non-directional



NON DIRECTIONAL

Scottish Sett™

Style Code	8151
Product Construction	Tufted Textured Loop
Yarn System	100% Recycled Solution Dyed Nylon
Machine Gauge	1/10
Pile Thickness	4.5mm +/- 0.5mm
Total Thickness	8.5mm +/- 0.5mm
Tile Size	50cm x 50cm
Area of Use	Commercial – General Use
ACCS (Australia Only)	Commercial Extra Heavy Duty & Stairs
Lifetime Antimicrobial	Intersept®
Soil/Stain Protection	Protekt ² ®
Installation Methods	Non-directional



NON DIRECTIONAL



Carbon Neutral Floors™



All Interface manufacturing facilities in the Asia Pacific region maintain registration to ISO 9001 Quality Management Systems and ISO 14001 Environmental Management Systems.

Production specifications are subject to normal manufacturing tolerances and may be changed without notice. Slight variation in colour among different production lots are normal and should be considered in the overall installation plan. Products covered by manufacturer's written warranty only. All other warranties, including without limitation any implied warranties of merchantability or fitness for particular purpose, are hereby disclaimed. Contact your representative for written warranty information.



Carbon Neutral Floors™

www.interface.com

Australia

Interface Australia
local toll free: 1800 804 361

India

Interface India
tel: +91 80 4613 1313

South East Asia

Interface Asia
tel: +65 6478 1510

South Korea

Interface South Korea
tel: +82 2 555 1734

Japan

Interface Japan
tel: +81 3 5733 5211

Beijing

Interface China
tel: +86 10 6590 7810

Hong Kong

Interface China
tel: +852 2802 0838

Shanghai

Interface China
tel: +86 21 6340 3868

11/2022
SF0060T1



Climate change is undeniable. And reversible. Our mission is to prove it.
Join the #ClimateTakeBack and help create a climate fit for life.