

World Woven One



Interface®

World Woven™ One

In Interface studios around the world, designers work together to decipher trend and interpret it through the lens of local textile histories – from Japan to the UK, the Americas to Australia. In this process, one thing becomes very clear: the most elegant solutions are often the simplest. World Woven Collection™, the 2016 addition to our global library of styles, is deeply influenced by this lesson.

Uncomplicated, hand crafted and imperfect are often the terms of beauty today. In a way, this seems more authentic and more accessible. Familiar objects conjure a sense of security, comfort and well-being. The World Woven Collection draws heavily from textile patterns and woven structures that embody all these things.

At the core of the collection are four patterns that were inspired by classic woolen textiles, rooted in the traditions of plain woven fabrics made for fashion, upholstery and home accessories that are still so essential today. The colors recall undyed wools with just a bit of contrast.

To complement this carefully curated set, are two color studies – one soft, less manicured and one flat and orderly. Following nature's method, each is comprised of many hues mingled together to create a more vivid rendering of color.

For the first time, we've attached three accent styles, designed especially for the World Woven Collection. Collins Cottage™ and Scottish Sett™ revive the noble houndstooth and plaid while Mod Café™ renews the playful and optimistic patterns of the 1950s. These complimentary patterns can be included in a floor composition to define space, create area rugs or combine with the balance of the collection to add interest and detail.

World Woven Collection is six Skinny Planks™ and three accent styles, each with 8 colours and made with 100% recycled content nylon. All nine styles weave together our current predilections with memories we share of some of the most enduring textiles of the past. They are simple, elegant fabrics that keep us warm and lift our spirits.





PRODUCT VVV880 COLOUR LINEN LOOM INSTALLED ASHLAR
PRODUCT COLLINS COTTAGE™ COLOUR HOUND LINEN
INSTALLED NON DIRECTIONAL



PRODUCT WW870 **COLOURS** LINEN WEFT, FLANNEL WEFT **INSTALLED** PATTERN BY TILE



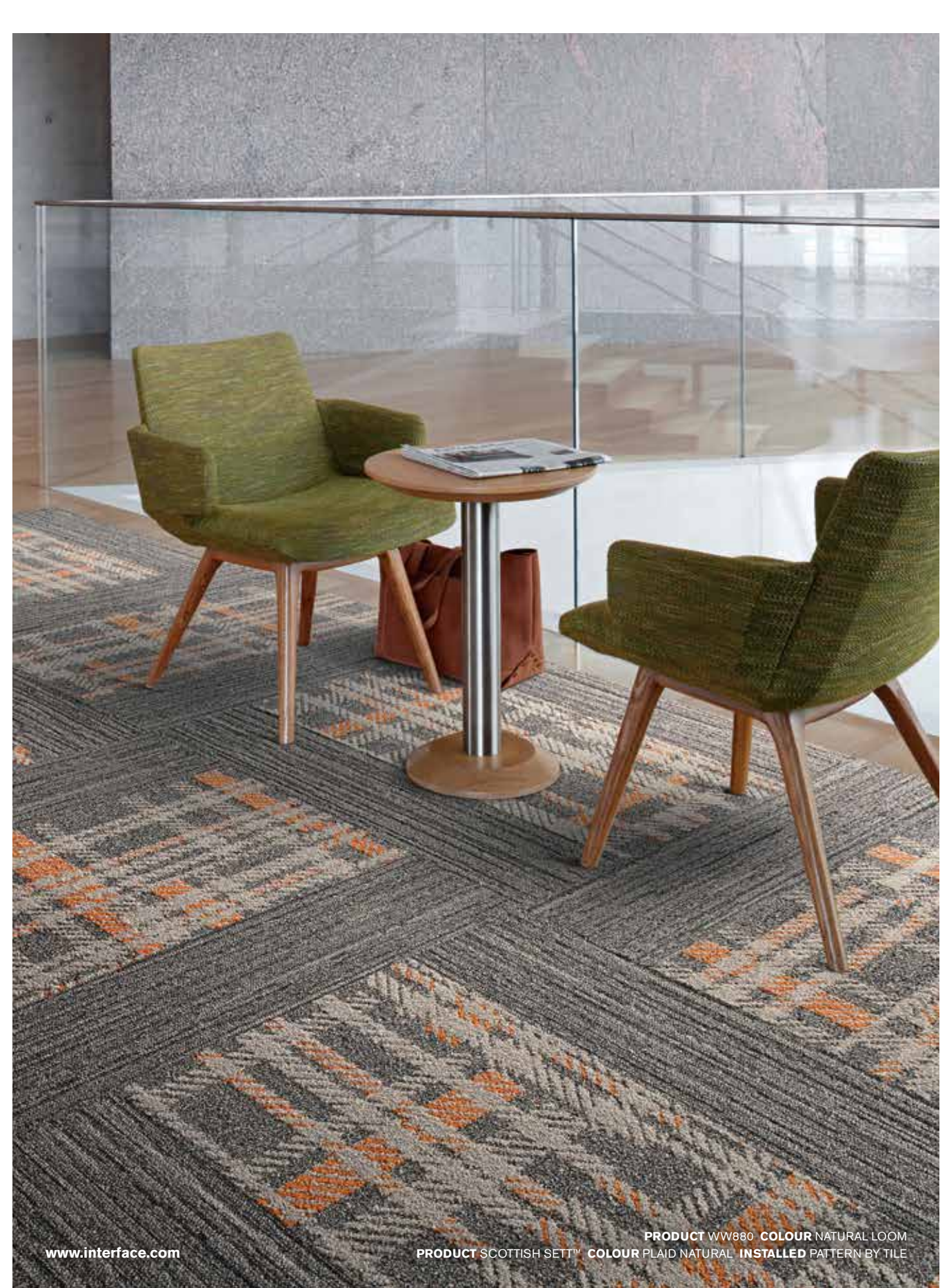
PRODUCT WW880 **COLOUR** BLACK LOOM
PRODUCT WW890 **COLOUR** RAFFIA DOBBY **INSTALLED** PATTERN BY TILE



PRODUCT WW890 COLOURS BLACK DOBBY, NATURAL DOBBY
INSTALLED PATTERN BY TILE

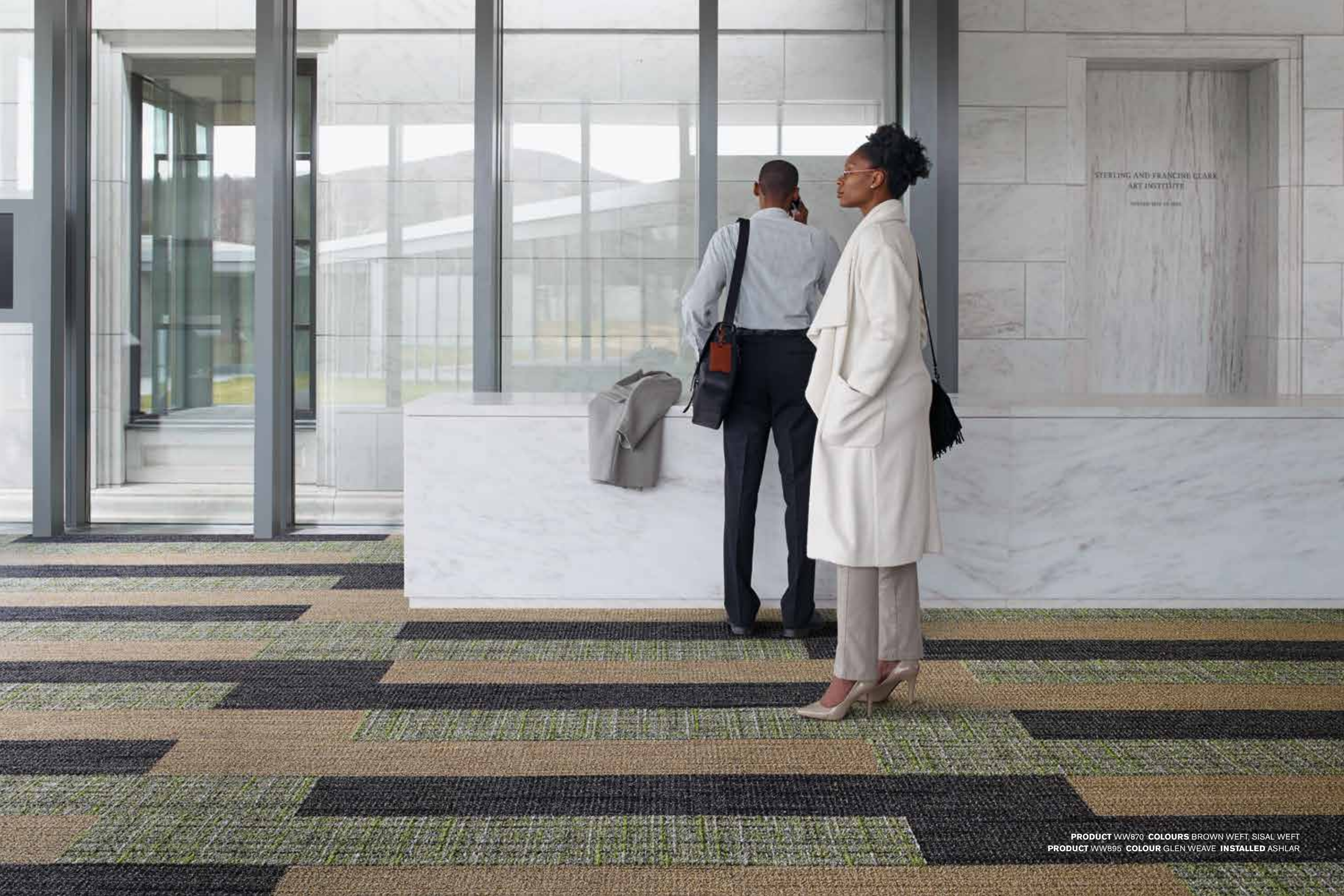


PRODUCT WW890 COLOUR NATURAL DOBBY INSTALLED ASHLAR



www.interface.com

PRODUCT WW880 COLOUR NATURAL LOOM
PRODUCT SCOTTISH SETT™ COLOUR PLAID NATURAL INSTALLED PATTERN BY TILE



STERLING AND FRANCINE CLARK
ART INSTITUTE
FOUNDED 1971 BY CLARK

PRODUCT WW870 COLOURS BROWN WEFT, SISAL WEFT
PRODUCT WW895 COLOUR GLEN WEAVE INSTALLED ASHLAR

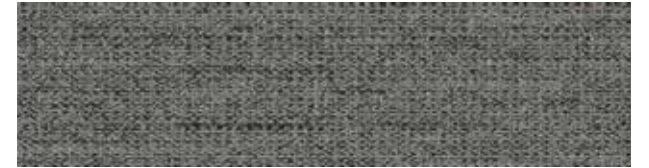


PRODUCT WW870 **COLOUR** FLANNEL WEFT **INSTALLED** PATTERN BY TILE

WW870 Colour Range



8111001 LINEN WEFT



8111002 FLANNEL WEFT



8111003 CHARCOAL WEFT



8111004 BLACK WEFT



8111005 BROWN WEFT



8111006 NATURAL WEFT



8111007 RAFFIA WEFT



8111008 SISAL WEFT



PRODUCT WW880 COLOUR NATURAL LOOM INSTALLED ASHLAR

WW880 Colour Range



8112001 LINEN LOOM



8112002 FLANNEL LOOM



8112003 CHARCOAL LOOM



8112004 BLACK LOOM



8112005 BROWN LOOM



8112006 NATURAL LOOM



8112007 RAFFIA LOOM



8112008 SISAL LOOM

WW890 Colour Range



8113001 LINEN DOBBY



8113002 FLANNEL DOBBY



8113003 CHARCOAL DOBBY



8113004 BLACK DOBBY



8113005 BROWN DOBBY



8113006 NATURAL DOBBY



8113007 RAFFIA DOBBY



8113008 SISAL DOBBY



PRODUCT WW890 COLOUR RAFFIA DOBBY INSTALLED ASHLAR



PRODUCT WW865 COLOUR GLEN WARP PRODUCT WW880
COLOUR RAFFIA LOOM INSTALLED PATTERN BY TILE



PRODUCT WW890 COLOUR LINEN DOBBY INSTALLED ASHLAR
PRODUCT MOD CAFE™ COLOUR STAR CHARCOAL INSTALLED MONOLITHIC



PRODUCT WW865 COLOUR FUCHSIA WARP
PRODUCT WW880 COLOUR BROWN LOOM INSTALLED PATTERN BY TILE



PRODUCT WW870 COLOURS CHARCOAL WEFT, RAFFIA WEFT
INSTALLED ASHLAR



Mod Café™ Colour Range



8150001 STAR LINEN



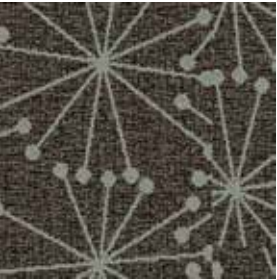
8150002 STAR FLANNEL



8150003 STAR CHARCOAL



8150004 STAR BLACK



8150005 STAR BROWN



8150006 STAR NATURAL



8150007 STAR RAFFIA



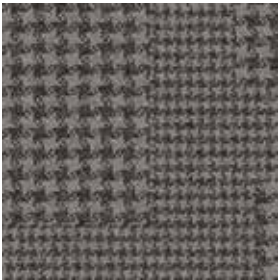
8150008 STAR SISAL

PRODUCT MOD CAFÉ COLOURS STAR LINEN
STAR NATURAL INSTALLED PATTERN BY TILE

Collins Cottage™ Colour Range



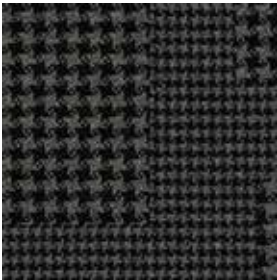
8152001 HOUND LINEN



8152002 HOUND FLANNEL



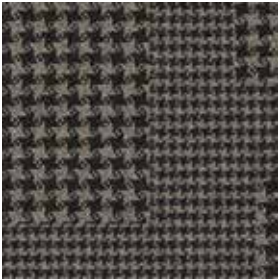
8152003 HOUND CHARCOAL



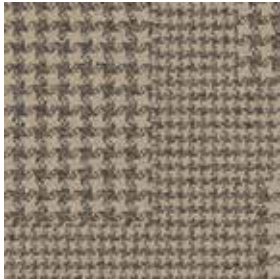
8152004 HOUND BLACK



8152005 HOUND BROWN



8152006 HOUND NATURAL



8152007 HOUND RAFFIA



8152008 HOUND SISAL

Scottish Sett™ Colour Range



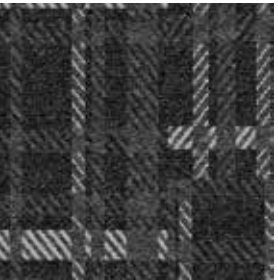
8151001 PLAID LINEN



8151002 PLAID FLANNEL



8151003 PLAID CHARCOAL



8151004 PLAID BLACK



8151005 PLAID BROWN



8151006 PLAID NATURAL

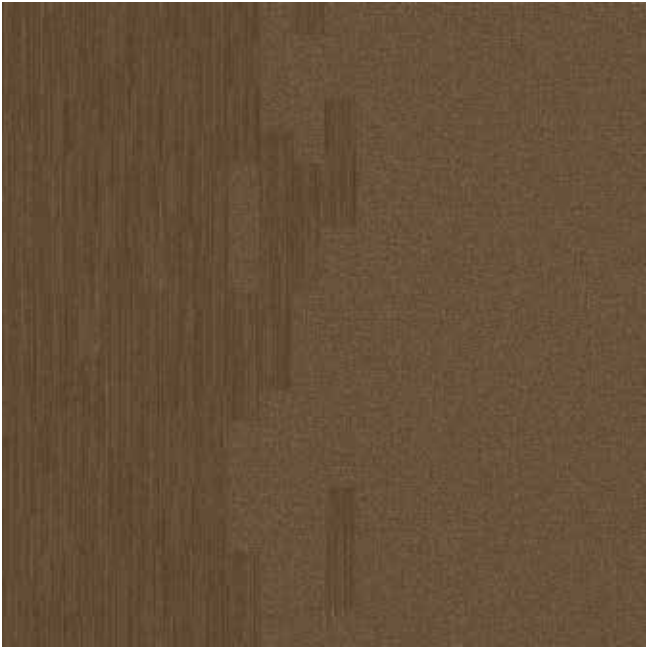


8151007 PLAID RAFFIA

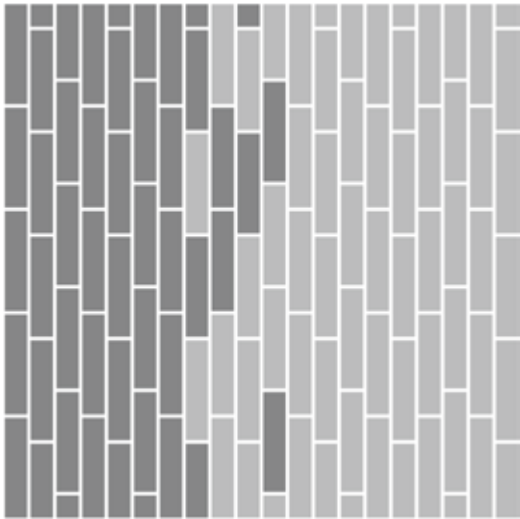


8151008 PLAID SISAL

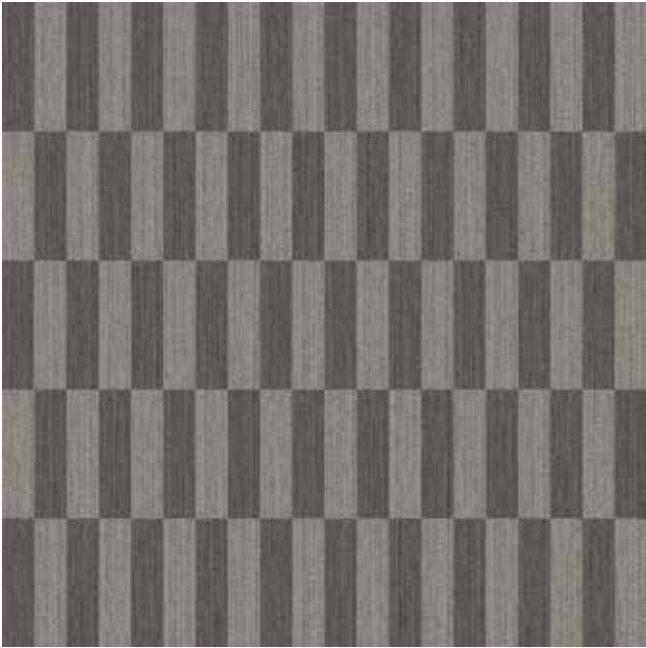
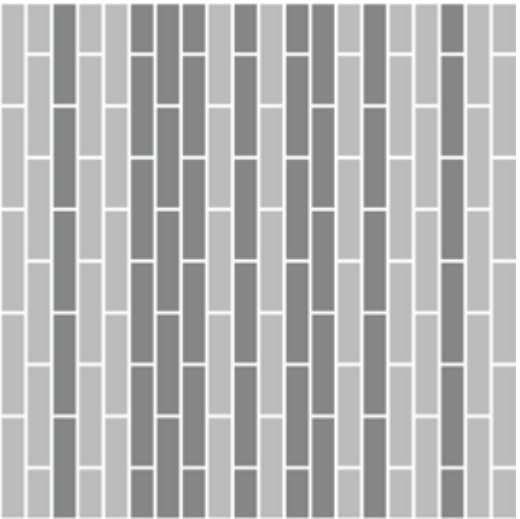
Design Ideas Below are floor layouts showing how to create the design ideas shared in several of the images featured in this brochure.



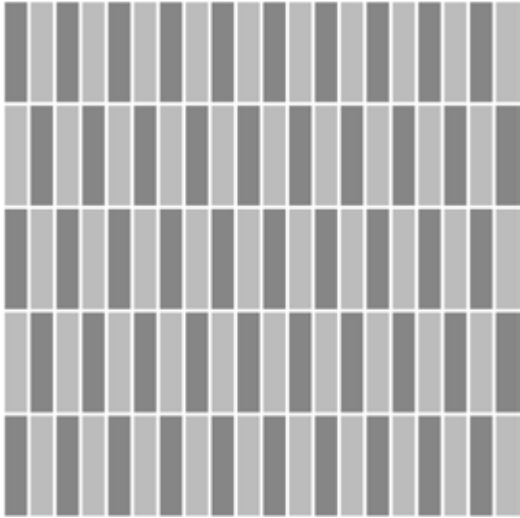
PRODUCT WW880 COLOUR SISAL LOOM
PRODUCT WW890 COLOUR SISAL DOBBY INSTALLED PATTERN BY TILE



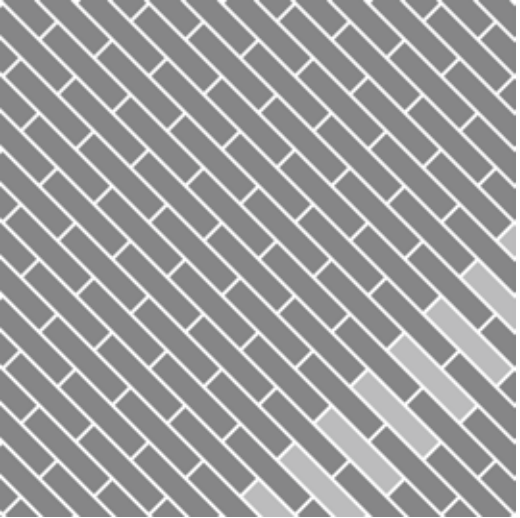
PRODUCT WW880 COLOUR LINEN LOOM
PRODUCT WW890 COLOUR CHARCOAL DOBBY INSTALLED ASHLAR



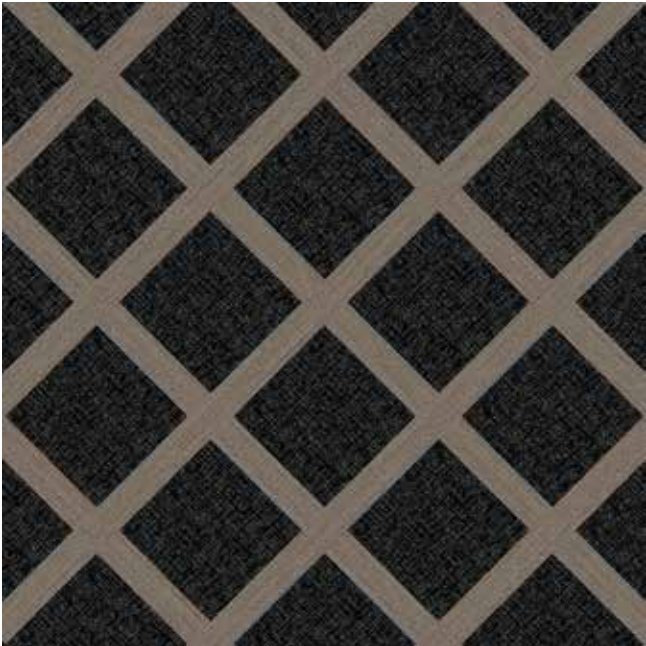
PRODUCT WW870 COLOURS LINEN WEFT, FLANNEL WEFT
INSTALLED PATTERN BY TILE



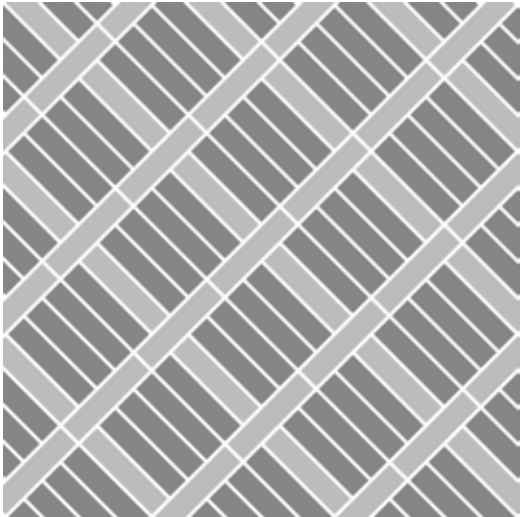
PRODUCT WW880 COLOUR BLACK LOOM
PRODUCT WW890 COLOUR RAFFIA DOBBY INSTALLED PATTERN BY TILE



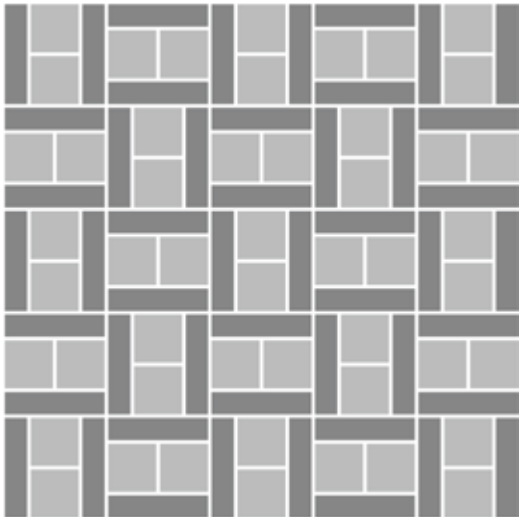
Design Ideas Below are floor layouts showing how to create the design ideas shared in several of the images featured in this brochure.



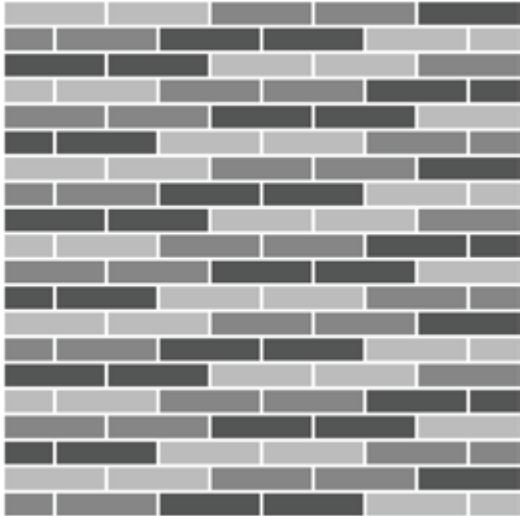
PRODUCT WW890 **COLOURS** BLACK DOBBY, NATURAL DOBBY
INSTALLED PATTERN BY TILE



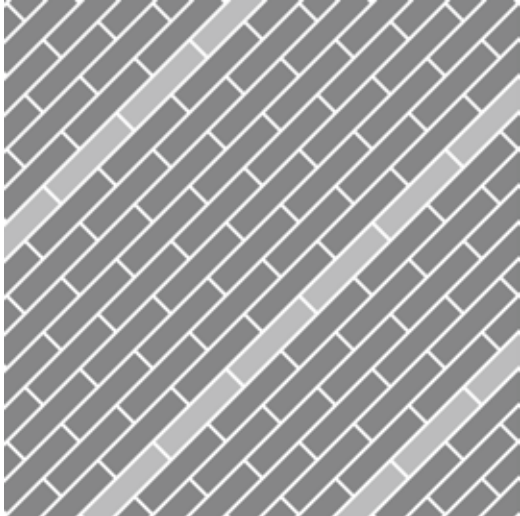
PRODUCT WW880 **COLOUR** NATURAL LOOM
PRODUCT SCOTTISH SETT **COLOUR** PLAID NATURAL **INSTALLED** PATTERN BY TILE



PRODUCT WW870 **COLOURS** BROWN WEFT, SISAL WEFT
PRODUCT WW895 **COLOUR** GLEN WEAVE **INSTALLED** ASHLAR



PRODUCT WW865 **COLOUR** FUCHSIA WARP
PRODUCT WW880 **COLOUR** BROWN LOOM **INSTALLED** PATTERN BY TILE



Specifications

WW870™

Style Code	8111
Product Construction	Tufted Textured Loop
Yarn System	100% Recycled Solution Dyed Nylon
Machine Gauge	1/12
Pile Thickness	3.0mm +/- 0.5mm
Total Thickness	6.5mm +/- 0.5mm
Tile Size	25cm x 100cm
Area of Use	Commercial – Heavy Use
ACCS (Australia Only)	Commercial Extra Heavy Duty & Stairs
Lifetime Antimicrobial	Intersept®
Soil/Stain Protection	Protekt ² ®
Installation Methods	Ashlar, Herringbone



ASHLAR



HERRINGBONE

WW880™

Style Code	8112
Product Construction	Tufted Textured Tip Sheared Loop
Yarn System	100% Recycled Solution Dyed Nylon
Machine Gauge	1/10
Pile Thickness	3.0mm +/- 0.5mm
Total Thickness	7.0mm +/- 0.5mm
Tile Size	25cm x 100cm
Area of Use	Commercial – Heavy Use
ACCS (Australia Only)	Commercial Extra Heavy Duty & Stairs
Lifetime Antimicrobial	Intersept®
Soil/Stain Protection	Protekt ² ®
Installation Methods	Ashlar, Herringbone



ASHLAR



HERRINGBONE

WW890™

Style Code	8113
Product Construction	Tufted Patterned Textured Loop
Yarn System	100% Recycled Solution Dyed Nylon
Machine Gauge	1/10
Pile Thickness	3.5mm +/- 0.5mm
Total Thickness	7.5mm +/- 0.5mm
Tile Size	25cm x 100cm
Area of Use	Commercial – Heavy Use
ACCS (Australia Only)	Commercial Extra Heavy Duty & Stairs
Lifetime Antimicrobial	Intersept®
Soil/Stain Protection	Protekt ² ®
Installation Methods	Ashlar, Herringbone



ASHLAR



HERRINGBONE

Mod Café™

Style Code	8150
Product Construction	Tufted Textured Loop
Yarn System	100% Recycled Solution Dyed Nylon
Machine Gauge	1/10
Pile Thickness	4.5mm +/- 0.5mm
Total Thickness	8.0mm +/- 0.5mm
Tile Size	50cm x 50cm
Area of Use	Commercial – General Use
ACCS (Australia Only)	Commercial Extra Heavy Duty & Stairs
Lifetime Antimicrobial	Intersept®
Soil/Stain Protection	Protekt ² ®
Installation Methods	Monolithic



MONOLITHIC

Collins Cottage™

Style Code	8152
Product Construction	Tufted Textured Loop
Yarn System	100% Recycled Solution Dyed Nylon
Machine Gauge	1/10
Pile Thickness	4.0mm +/- 0.5mm
Total Thickness	8.0mm +/- 0.5mm
Tile Size	50cm x 50cm
Area of Use	Commercial – General Use
ACCS (Australia Only)	Commercial Extra Heavy Duty & Stairs
Lifetime Antimicrobial	Intersept®
Soil/Stain Protection	Protekt ² ®
Installation Methods	Non-directional



NON DIRECTIONAL

Scottish Sett™

Style Code	8151
Product Construction	Tufted Textured Loop
Yarn System	100% Recycled Solution Dyed Nylon
Machine Gauge	1/10
Pile Thickness	4.5mm +/- 0.5mm
Total Thickness	8.5mm +/- 0.5mm
Tile Size	50cm x 50cm
Area of Use	Commercial – General Use
ACCS (Australia Only)	Commercial Extra Heavy Duty & Stairs
Lifetime Antimicrobial	Intersept®
Soil/Stain Protection	Protekt ² ®
Installation Methods	Non-directional



NON DIRECTIONAL



Carbon Neutral Floors™



All Interface manufacturing facilities in the Asia Pacific region maintain registration to ISO 9001 Quality Management Systems and ISO 14001 Environmental Management Systems.

Production specifications are subject to normal manufacturing tolerances and may be changed without notice. Slight variation in colour among different production lots are normal and should be considered in the overall installation plan. Products covered by manufacturer's written warranty only. All other warranties, including without limitation any implied warranties of merchantability or fitness for particular purpose, are hereby disclaimed. Contact your representative for written warranty information.



Carbon Neutral Floors™

www.interface.com

Australia

Interface Australia
local toll free: 1800 804 361

India

Interface India
tel: +91 80 4613 1313

South East Asia

Interface Asia
tel: +65 6478 1510

South Korea

Interface South Korea
tel: +82 2 555 1734

Japan

Interface Japan
tel: +81 3 5733 5211

Beijing

Interface China
tel: +86 10 6590 7810

Hong Kong

Interface China
tel: +852 2802 0838

Shanghai

Interface China
tel: +86 21 6340 3868

11/2022
SF0059T1



Climate change is undeniable. And reversible. Our mission is to prove it.
Join the #ClimateTakeBack and help create a climate fit for life.