

World Woven Two

Interface®

World Woven™ Two

In Interface studios around the world, designers work together to decipher trend and interpret it through the lens of local textile histories – from Japan to the UK, the Americas to Australia. In this process, one thing becomes very clear: the most elegant solutions are often the simplest. World Woven Collection™, the 2016 addition to our global library of styles, is deeply influenced by this lesson.

Uncomplicated, hand crafted and imperfect are often the terms of beauty today. In a way, this seems more authentic and more accessible. Familiar objects conjure a sense of security, comfort and well-being. The World Woven Collection draws heavily from textile patterns and woven structures that embody all these things.

At the core of the collection are four patterns that were inspired by classic woolen textiles, rooted in the traditions of plain woven fabrics made for fashion, upholstery and home accessories that are still so essential today. The colours recall undyed wools with just a bit of contrast.

To complement this carefully curated set, are two colour studies – one soft, less manicured and one flat and orderly. Following nature's method, each is comprised of many hues mingled together to create a more vivid rendering of colour.

For the first time, we've attached three accent styles, designed especially for the World Woven Collection. Collins Cottage™ and Scottish Sett™ revive the noble houndstooth and plaid while Mod Café™ renews the playful and optimistic patterns of the 1950s. These complimentary patterns can be included in a floor composition to define space, create area rugs or combine with the balance of the collection to add interest and detail.

World Woven Collection is six Skinny Planks™ and three accent styles, each with 8 colours and made with 100% recycled content nylon. All nine styles weave together our current predilections with memories we share of some of the most enduring textiles of the past. They are simple, elegant fabrics that keep us warm and lift our spirits.





PRODUCT WW865 COLOUR DALE WARP PRODUCT WW895
COLOUR DALE WEAVE INSTALLED PATTERN BY TILE



PRODUCT WW860 COLOUR BLACK TWEED
PRODUCT WW865 COLOUR HIGHLAND WARP
PRODUCT WW895 COLOUR HIGHLAND WEAVE, INSTALLED PATTERN BY TILE



PRODUCT WW880 COLOUR FLANNEL LOOM, INSTALLED ASHLAR
PRODUCT MOD CAFE™ COLOUR STAR LINEN, INSTALLED MONOLITHIC





PRODUCT WW860 COLOUR BROWN TWEED INSTALLED ASHLAR

WW860 Colour Range



8109001 LINEN TWEED



8109002 FLANNEL TWEED



8109003 CHARCOAL TWEED



8109004 BLACK TWEED



8109005 BROWN TWEED



8109006 NATURAL TWEED

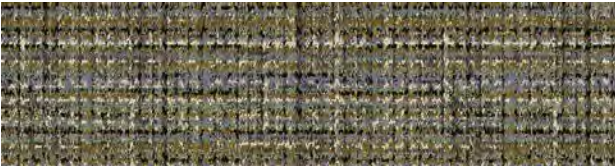


8109007 RAFFIA TWEED



8109008 SISAL TWEED

WW895 Colour Range



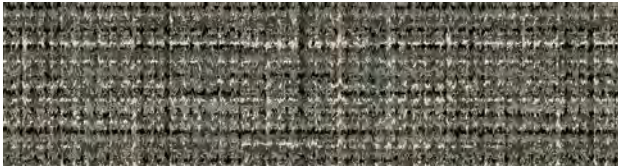
8114001 HEATHER WEAVE



8114002 LOCH WEAVE



8114003 HIGHLAND WEAVE



8114004 MOORLAND WEAVE



8114005 FUCHSIA WEAVE



8114006 AUTUMN WEAVE



8114007 GLEN WEAVE



8114008 DALE WEAVE



PRODUCT WW895 COLOUR HEATHER WEAVE INSTALLED ASHLAR

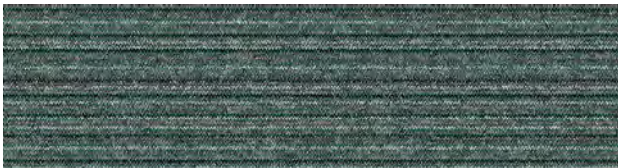


PRODUCT WW865 COLOUR HEATHER WARP INSTALLED ASHLAR

WW865 Colour Range



8110001 HEATHER WARP



8110002 LOCH WARP



8110003 HIGHLAND WARP



8110004 MOORLAND WARP



8110005 FUCHSIA WARP



8110006 AUTUMN WARP



8110007 GLEN WARP



8110008 DALE WARP



PRODUCT WW865 COLOUR LOCH WARP
PRODUCT WW870 COLOUR BLACK WEFT INSTALLED PATTERN BY TILE



PRODUCT WW895 COLOUR FUCHSIA WEAVE PRODUCT COLLINS COTTAGE™
COLOUR HOUND CHARCOAL INSTALLED PATTERN BY TILE



PRODUCT WW865 COLOUR LOCH WARP
PRODUCT WW880 COLOUR CHARCOAL LOOM INSTALLED ASHLAR



PRODUCT WW865 COLOUR MOORLAND WARP
PRODUCT WW890 COLOUR FLANNEL DOBBY INSTALLED ASHLAR





PRODUCT SCOTTISH SETT COLOUR PLAID CHARCOAL
PRODUCT WW860 COLOUR CHARCOAL TWEED INSTALLED PATTERN BY TILE



PRODUCT WW860 COLOUR BLACK TWEED
PRODUCT WW865 COLOUR GLEN WARP
PRODUCT WW895 COLOUR MOORLAND WEAVE INSTALLED PATTERN BY TILE



PRODUCT SCOTTISH SETT COLOUR PLAID CHARCOAL
INSTALLED NON DIRECTIONAL PRODUCT COLLINS COTTAGE
COLOUR HOUND CHARCOAL INSTALLED NON DIRECTIONAL

Scottish Sett™ Colour Range



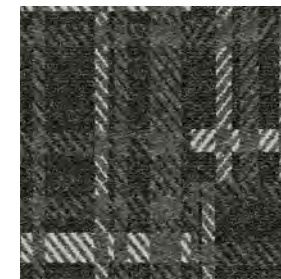
8151001 PLAID LINEN



8151002 PLAID FLANNEL



8151003 PLAID CHARCOAL



8151004 PLAID BLACK



8151005 PLAID BROWN



8151006 PLAID NATURAL

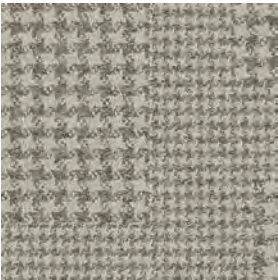


8151007 PLAID RAFFIA

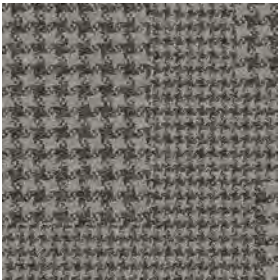


8151008 PLAID SISAL

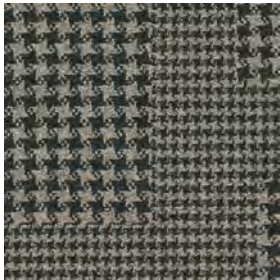
Collins Cottage™ Colour Range



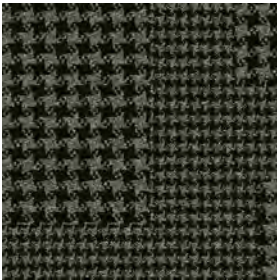
8152001 HOUND LINEN



8152002 HOUND FLANNEL



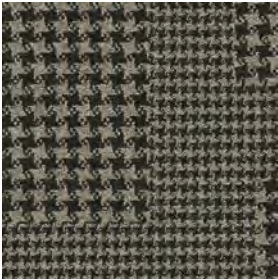
8152003 HOUND CHARCOAL



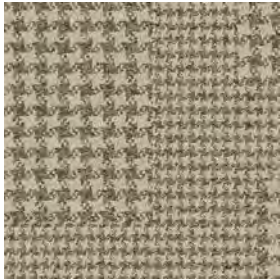
8152004 HOUND BLACK



8152005 HOUND BROWN



8152006 HOUND NATURAL



8152007 HOUND RAFFIA



8152008 HOUND SISAL

Mod Café™ Colour Range



8150001 STAR LINEN



8150002 STAR FLANNEL



8150003 STAR CHARCOAL



8150004 STAR BLACK



8150005 STAR BROWN



8150006 STAR NATURAL



8150007 STAR RAFFIA

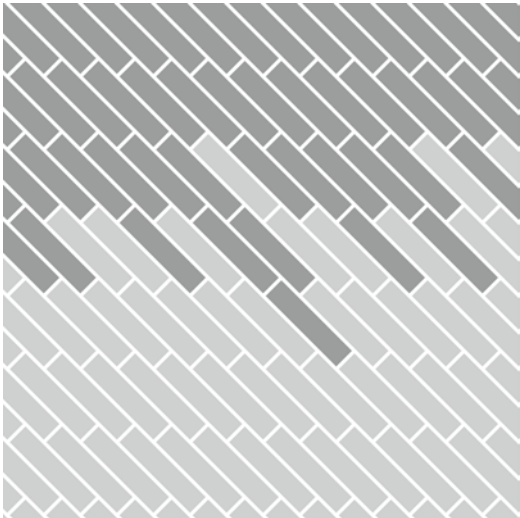


8150008 STAR SISAL

Design Ideas Below are floor layouts showing how to create the design ideas shared in several of the images featured in this brochure.



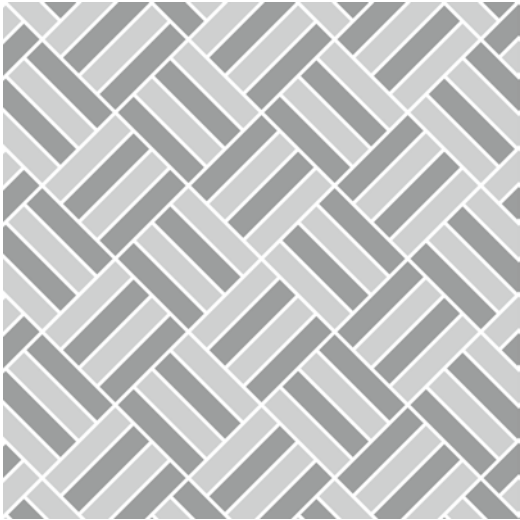
PRODUCT WW865 COLOUR HIGHLAND WARP
PRODUCT WW895 COLOUR HIGHLAND WEAVE INSTALLED PATTERN BY TILE



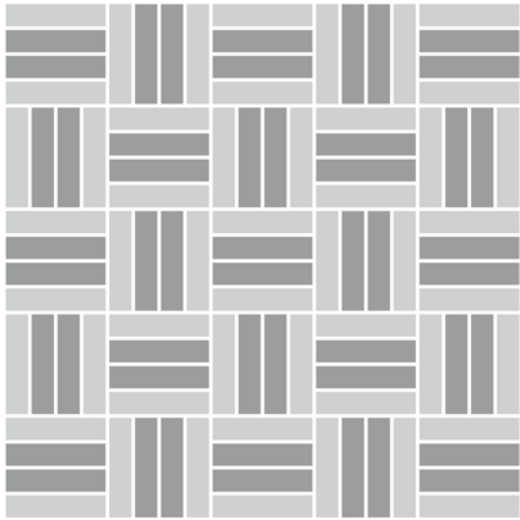
PRODUCT WW860 COLOUR BLACK TWEED
PRODUCT WW865 COLOUR HIGHLAND WARP
PRODUCT WW895 COLOUR HIGHLAND WEAVE INSTALLED PATTERN BY TILE



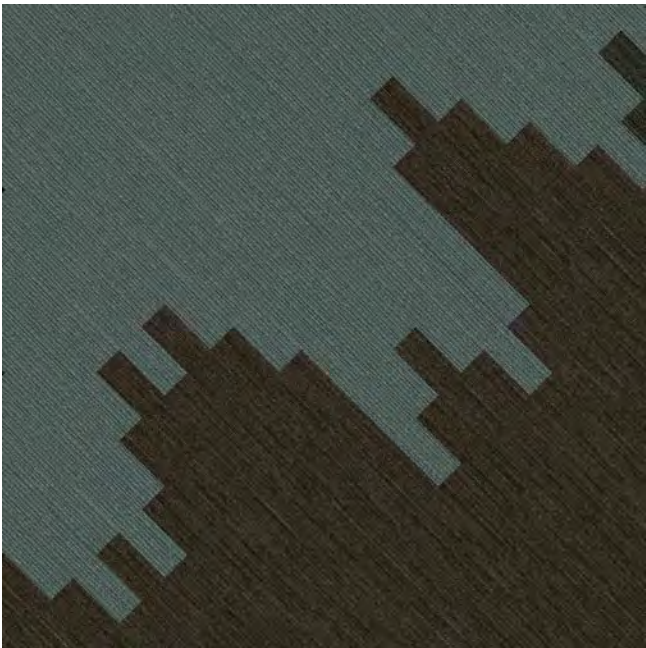
PRODUCT WW865 COLOUR DALE WARP PRODUCT WW895
COLOUR DALE WEAVE INSTALLED PATTERN BY TILE



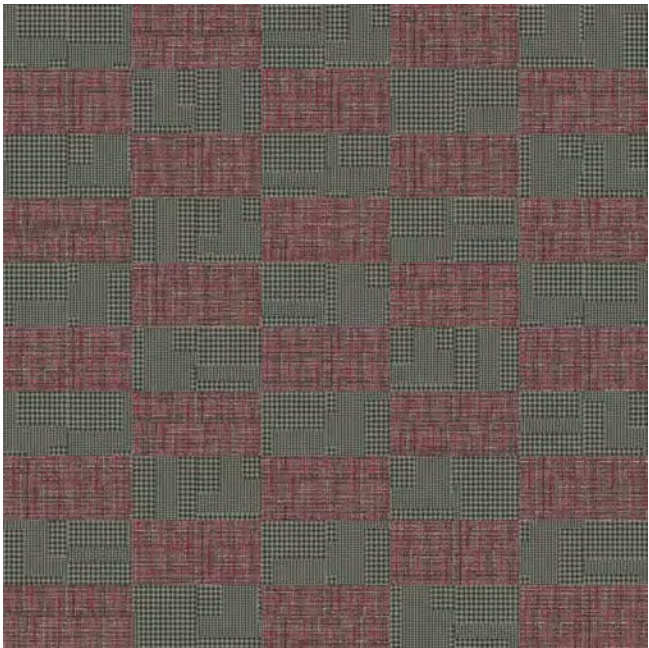
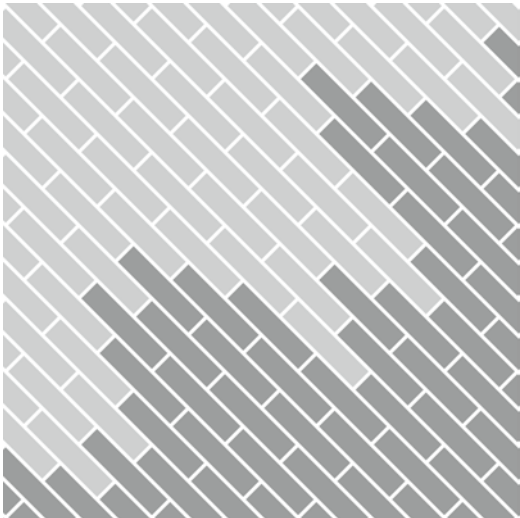
PRODUCT WW880 COLOUR NATURAL LOOM PRODUCT WW895
COLOUR AUTUMN WEAVE INSTALLED PATTERN BY TILE



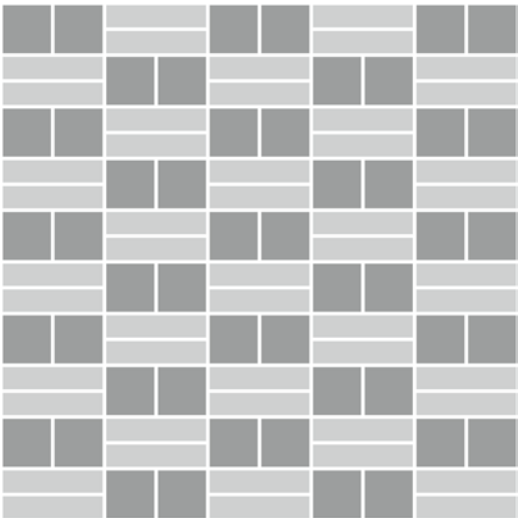
Design Ideas Below are floor layouts showing how to create the design ideas shared in several of the images featured in this brochure.



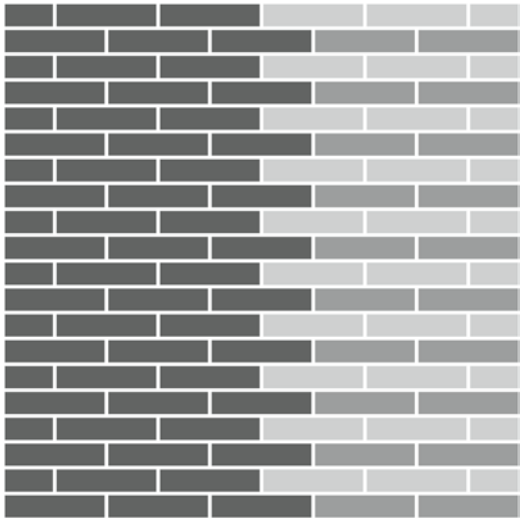
PRODUCT WW865 **COLOUR** LOCH WARP
PRODUCT WW870 **COLOUR** BLACK WEFT **INSTALLED** PATTERN BY TILE



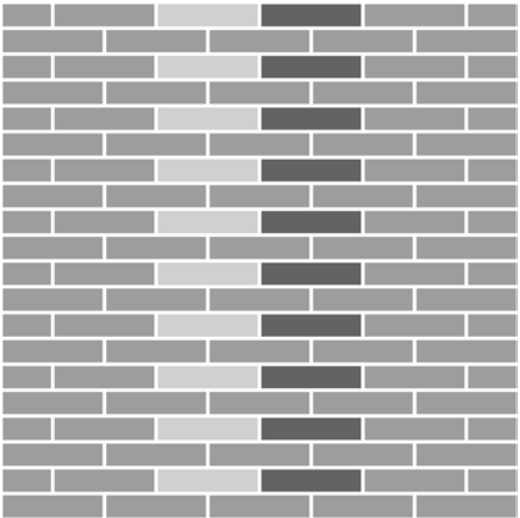
PRODUCT WW895 **COLOUR** FUCHSIA WEAVE **PRODUCT** COLLINS COTTAGE™
COLOUR HOUND CHARCOAL **INSTALLED** PATTERN BY TILE



PRODUCT WW860 **COLOURS** NATURAL TWEED, RAFFIA TWEED
PRODUCT WW895 **COLOUR** GLEN WEAVE **INSTALLED** PATTERN BY TILE



PRODUCT WW860 **COLOUR** BLACK TWEED
PRODUCT WW865 **COLOUR** GLEN WARP
PRODUCT WW895 **COLOUR** MOORLAND WEAVE **INSTALLED** PATTERN BY TILE



Specifications

WW860™

Style Code	8109
Product Construction	Tufted Loop Pile
Yarn System	100% Recycled Solution Dyed Nylon
Machine Gauge	1/10
Pile Thickness	2.8 ± 0.5mm
Total Thickness	5.5 ± 0.5mm
Tile Size	25 x 100cm
Area of Use	Commercial Heavy Use
ACCS Grading	Commercial Extra Heavy Duty & Stairs
Lifetime Antimicrobial	Intersept®
Soil / Stain Protection	Protekt ² ®

Installation Methods



Mod Café™

Style Code	8150
Product Construction	Tufted Textured Loop
Yarn System	100% Recycled Solution Dyed Nylon
Machine Gauge	1/10
Pile Thickness	4.5 ± 0.5mm
Total Thickness	8.0 ± 0.5mm
Tile Size	50 x 50cm
Area of Use	Commercial General Use
ACCS Grading	Commercial Extra Heavy Duty & Stairs
Lifetime Antimicrobial	Intersept®
Soil / Stain Protection	Protekt ² ®

Installation Methods



WW865™

Style Code	8110
Product Construction	Tufted Loop Pile
Yarn System	100% Recycled Solution Dyed Nylon
Machine Gauge	1/10
Pile Thickness	2.8 ± 0.5mm
Total Thickness	5.5 ± 0.5mm
Tile Size	25 x 100cm
Area of Use	Commercial Heavy Use
ACCS Grading	Commercial Extra Heavy Duty & Stairs
Lifetime Antimicrobial	Intersept®
Soil / Stain Protection	Protekt ² ®

Installation Methods



Collins Cottage™

Style Code	8152
Product Construction	Tufted Textured Loop
Yarn System	100% Recycled Solution Dyed Nylon
Machine Gauge	1/10
Pile Thickness	4.0 ± 0.5mm
Total Thickness	8.0 ± 0.5mm
Tile Size	50 x 50cm
Area of Use	Commercial General Use
ACCS Grading	Commercial Extra Heavy Duty & Stairs
Lifetime Antimicrobial	Intersept®
Soil / Stain Protection	Protekt ² ®

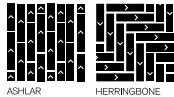
Installation Methods



WW895™

Style Code	8114
Product Construction	Tufted Patterned Textured Loop Tile
Yarn System	100% Recycled Solution Dyed Nylon
Machine Gauge	1/10
Pile Thickness	2.9 ± 0.5mm
Total Thickness	7.5 ± 0.5mm
Tile Size	25 x 100cm
Area of Use	Commercial Heavy Use
ACCS Grading	Commercial Extra Heavy Duty & Stairs
Lifetime Antimicrobial	Intersept®
Soil / Stain Protection	Protekt ² ®

Installation Methods



Scottish Sett™

Style Code	8151
Product Construction	Tufted Textured Loop
Yarn System	100% Recycled Solution Dyed Nylon
Machine Gauge	1/10
Pile Thickness	4.5 ± 0.5mm
Total Thickness	8.5 ± 0.5mm
Tile Size	50 x 50cm
Area of Use	Commercial General Use
ACCS Grading	Commercial Extra Heavy Duty & Stairs
Lifetime Antimicrobial	Intersept®
Soil / Stain Protection	Protekt ² ®

Installation Methods



Why Our Modular Flooring?



Modular Flooring
Performance and flexibility. Interface's standard backing systems set the industry standard for modular performance. Tiles stay on the floor with no upcurl, no tapping and no rippling effect, yet are easy to selectively replace. Our modular carpet is easier to handle than bulky roll carpet and produces an average of just 2-5% waste compared to roll carpet's average of 15% . And it installs seamlessly with our LVT, no transition strips needed.



Intersept®
Mold protection. Our proprietary preservative, Intersept, protects our modular carpet against mould growth and odour-causing bacteria—guaranteed. Intersept treated carpet, with proper maintenance, shows no mould or bacterial growth when tested as per the ASTM E2471 Standard Test Method. Intersept is EPA-approved for safe use in carpet, water insoluble and contains no halogens, heavy metals, phenols or formaldehyde.



15-Year Warranty
Interface products are warranted for 15 years against excessive surface wear, edge ravel, backing separation, shrinking, stretching and static electricy even under castor chair conditions.



ReEntry
At Interface, an end of life solution of our products is a reality. ReEntry is our innovative programme to reclaim materials used in our product. Taking back our product at end of life is a service we provide our customers to ensure that none of the products they use will end up in landfill. Whether it is recycling into new product or re-purposing, we see our customer's waste as an opportunity for new product life.



Protekt2®
Stain protection. The life and performance of your flooring is extended with Protekt2, our patented stain resistant protection. Protekt2 uses advanced technology to provide a lasting barrier against permanent soiling and staining, which simplifies the cleaning process and enhances the longevity of your carpet. Protekt2 is product specific, please refer to individual product specifications for details.



Local Manufacturing
We combine local responsiveness with a global experience. Being part of the same communities as our customers, we foster collaborative, committed, and productive relationships. Our carpet tiles are manufactured in Australia and China, contributing to local economies and the environment.



TacTiles®
No glue installation. Our revolutionary TacTiles installation system eliminates the need for glue, adhering tiles securely together to form a floor that “floats” for greater flexibility, easier replacement and long-term performance. The result? Less mess, less waste and virtually no VOCs, not to mention an environmental footprint that is over 90% lower than that of traditional glue adhesives.



Health Product Declaration (HPD) –
A transparency tool for evaluating whether a product supports Green Chemistry. As part of our work on Health and Materials, Interface continuously reduces the environmental and health impacts of our products through elimination of materials of concern.

Third Party Certifications



Environmental Product Declaration (EPD)
The Environmental Product Declaration (EPD) is a third party verified environmental certification classified as Type III that quantifies and verifies the lifecycle impacts of products and goods according to the International Standards Organization (ISO) 14025, 14040, 14044 and EN 15804. EPDs help customers that are environmentally driven to evaluate the performance of a product and to make the best decision when choosing a product. Interface EPDs can be found on [interface.com](https://www.interface.com).



Singapore Green Building Product (SGBP)
The SGBP certification is designed to evaluate and certify building products that meet specific sustainability and environmental performance criteria. The certification scheme helps building professionals identify products that are sustainable and more carbon efficient. Interface carpet tile products are certified “Leader” and LVT products are at “Excellent” Level.



Global GreenTag GreenRate - Level A
Global GreenTag's GreenRate certification is a product rating system recognised by the Green Building Council of Australia and Green Building Council of New Zealand. Its assessment scheme aligns to the Green Star® Responsible Products program. All Interface products are certified “Level A”.



NSF Certification
NSF International develops public health standards and certification programs that help protect the world's food, water, consumer products and environment. Interface carpet tile products are certified “Gold”.



Best Practice Guidelines for PVC
Our product proudly holds the Best Environmental Practice (BEP) PVC certification, a recognition of compliance with stringent environmental and social criteria in PVC manufacturing. This certification is a key contributor to Green Star certification, aligning with the GBCA's Responsible Products Framework. Our commitment to BEP guidelines demonstrates our dedication to environmental responsibility and product excellence.



CRI Green Label Plus
The Carpet and Rug Insitute (CRI) Green Label Plus sets higher standards for indoor air quality and ensures that customers are purchasing the very lowest emitting products on the market. Interface Carpet Tiles and TacTiles have fulfilled the requirements for this certification.

Do more on [interface.com](https://www.interface.com)

- Browse products, save and share favourites
- See images of products in a variety of room scenes
- Browse floor designs, change colours, upload your own image, download and share
- Get full specifications, sustainability certifications and more
- Sign up to get the latest information on Interface products and news

Our EPDs and certifications contribute credits towards Green Building Council's Green Star® Responsible Products program..

Green Star is the Green Building Council of Australia's sustainability rating system for the built environment. It is used to rate new and existing buildings, new fit-outs, and new precinct developments. The Green Building Council of Australia recognises Responsible Products that may contribute to a Green Star rating through its Responsible Credits.

www.interface.com

Australia

Interface Australia
local toll free: 1800 804 361

India

Interface India
tel: +91 76249 17934

South East Asia

Interface Asia
tel: +65 6478 1510

South Korea

Interface South Korea
tel: +82 2 555 1734

Japan

Interface Japan
tel: +81(0)3-6892-5513

Beijing

Interface China
tel: +86 10 6590 7810

Hong Kong

Interface China
tel: +852 2802 0838

Shanghai

Interface China
tel: +86 21 6340 3868

09/2024
SF0060T1



Climate change is undeniable. And reversible. Our mission is to prove it.
Join the #ClimateTakeBack and help create a climate fit for life.