

# World Woven One

Interface®

World Woven™ One

In Interface studios around the world, designers work together to decipher trend and interpret it through the lens of local textile histories – from Japan to the UK, the Americas to Australia. In this process, one thing becomes very clear: the most elegant solutions are often the simplest. World Woven Collection™, the 2016 addition to our global library of styles, is deeply influenced by this lesson.

Uncomplicated, hand crafted and imperfect are often the terms of beauty today. In a way, this seems more authentic and more accessible. Familiar objects conjure a sense of security, comfort and well-being. The World Woven Collection draws heavily from textile patterns and woven structures that embody all these things.

At the core of the collection are four patterns that were inspired by classic woolen textiles, rooted in the traditions of plain woven fabrics made for fashion, upholstery and home accessories that are still so essential today. The colors recall undyed wools with just a bit of contrast.

To complement this carefully curated set, are two color studies – one soft, less manicured and one flat and orderly. Following nature's method, each is comprised of many hues mingled together to create a more vivid rendering of color.

For the first time, we've attached three accent styles, designed especially for the World Woven Collection. Collins Cottage™ and Scottish Sett™ revive the noble houndstooth and plaid while Mod Café™ renews the playful and optimistic patterns of the 1950s. These complimentary patterns can be included in a floor composition to define space, create area rugs or combine with the balance of the collection to add interest and detail.

World Woven Collection is six Skinny Planks™ and three accent styles, each with 8 colours and made with 100% recycled content nylon. All nine styles weave together our current predilections with memories we share of some of the most enduring textiles of the past. They are simple, elegant fabrics that keep us warm and lift our spirits.





PRODUCT WW880 COLOUR LINEN LOOM INSTALLED ASHLAR  
PRODUCT COLLINS COTTAGE™ COLOUR HOUND LINEN  
INSTALLED NON DIRECTIONAL



PRODUCT WW870 COLOURS LINEN WEFT, FLANNEL WEFT INSTALLED PATTERN BY TILE



PRODUCT WW880 COLOUR BLACK LOOM  
PRODUCT WW890 COLOUR RAFFIA DOBBY INSTALLED PATTERN BY TILE



PRODUCT WW890 COLOURS BLACK DOBBY, NATURAL DOBBY  
INSTALLED PATTERN BY TILE



PRODUCT WW890 COLOUR NATURAL DOBEY INSTALLED ASHLAR



[www.interface.com](http://www.interface.com)

PRODUCT WW880 COLOUR NATURAL LOOM  
PRODUCT SCOTTISH SETT COLOUR PLAID NATURAL INSTALLED PATTERN BY TILE



STERLING AND FRANCINE CLARK  
ART INSTITUTE  
OPENED MAY 19 1993

PRODUCT WW870 COLOURS BROWN WEFT, SISAL WEFT  
PRODUCT WW895 COLOUR GLEN WEAVE INSTALLED ASHLAR



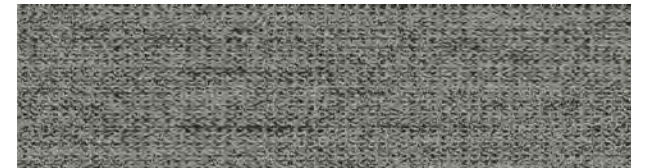
PRODUCT WW870 COLOUR FLANNEL WEFT INSTALLED PATTERN BY TILE

## WW870 Colour Range

---



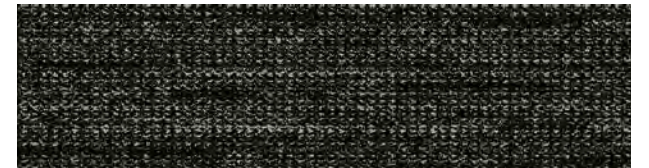
8111001 LINEN WEFT



8111002 FLANNEL WEFT



8111003 CHARCOAL WEFT



8111004 BLACK WEFT



8111005 BROWN WEFT



8111006 NATURAL WEFT



8111007 RAFFIA WEFT



8111008 SISAL WEFT

WW880 Colour Range



8112001 LINEN LOOM



8112002 FLANNEL LOOM



8112003 CHARCOAL LOOM



8112004 BLACK LOOM



8112005 BROWN LOOM



8112006 NATURAL LOOM



8112007 RAFFIA LOOM



8112008 SISAL LOOM



PRODUCT WW880 COLOUR NATURAL LOOM INSTALLED ASHLAR



WW890 Colour Range



8113001 LINEN DOBBY



8113002 FLANNEL DOBBY



8113003 CHARCOAL DOBBY



8113004 BLACK DOBBY



8113005 BROWN DOBBY



8113006 NATURAL DOBBY



8113007 RAFFIA DOBBY



8113008 SISAL DOBBY



PRODUCT WW865 COLOUR GLEN WARP PRODUCT WW860  
COLOUR RAFFIA LOOM INSTALLED PATTERN BY TILE

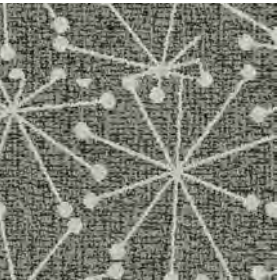




Mod Café™ Colour Range



8150001 STAR LINEN



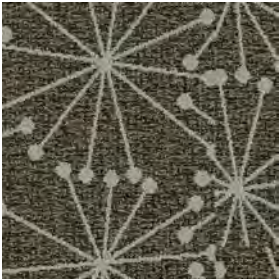
8150002 STAR FLANNEL



8150003 STAR CHARCOAL



8150004 STAR BLACK



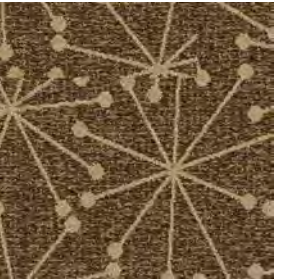
8150005 STAR BROWN



8150006 STAR NATURAL



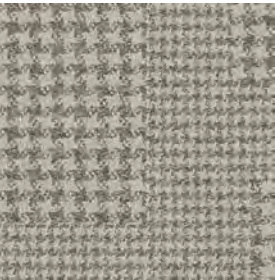
8150007 STAR RAFFIA



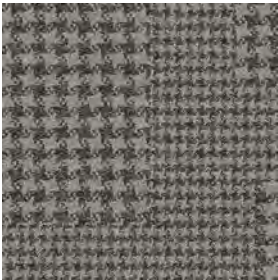
8150008 STAR SISAL

PRODUCT MOD CAFÉ COLOURS STAR LINEN  
STAR NATURAL INSTALLED PATTERN BY TILE

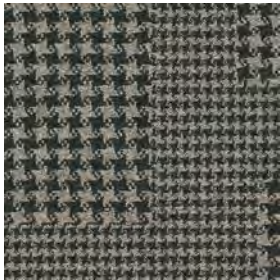
Collins Cottage™ Colour Range



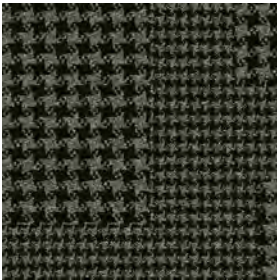
8152001 HOUND LINEN



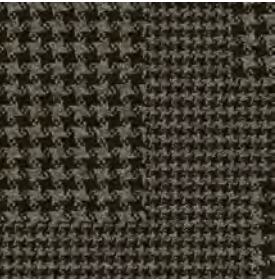
8152002 HOUND FLANNEL



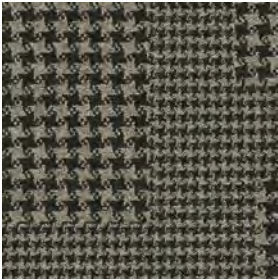
8152003 HOUND CHARCOAL



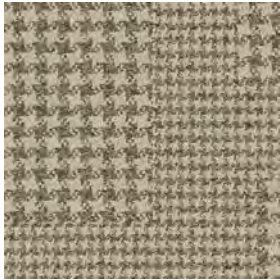
8152004 HOUND BLACK



8152005 HOUND BROWN



8152006 HOUND NATURAL



8152007 HOUND RAFFIA



8152008 HOUND SISAL

Scottish Sett™ Colour Range



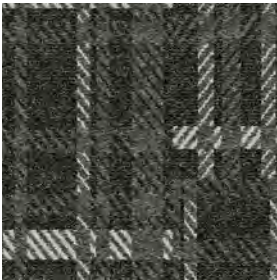
8151001 PLAID LINEN



8151002 PLAID FLANNEL



8151003 PLAID CHARCOAL



8151004 PLAID BLACK



8151005 PLAID BROWN



8151006 PLAID NATURAL



8151007 PLAID RAFFIA

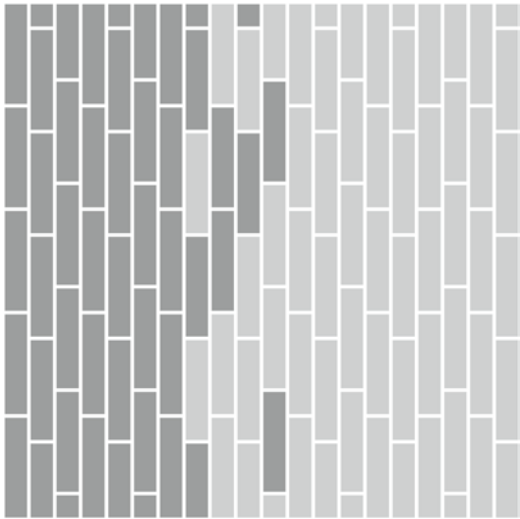


8151008 PLAID SISAL

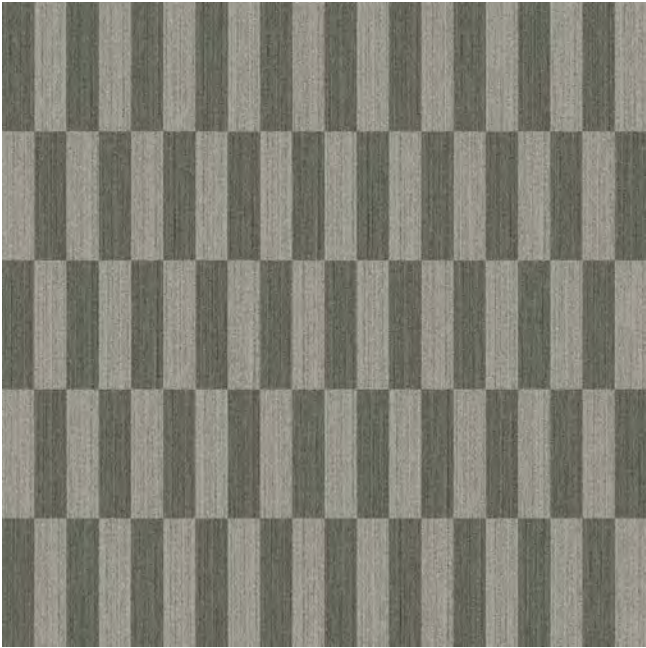
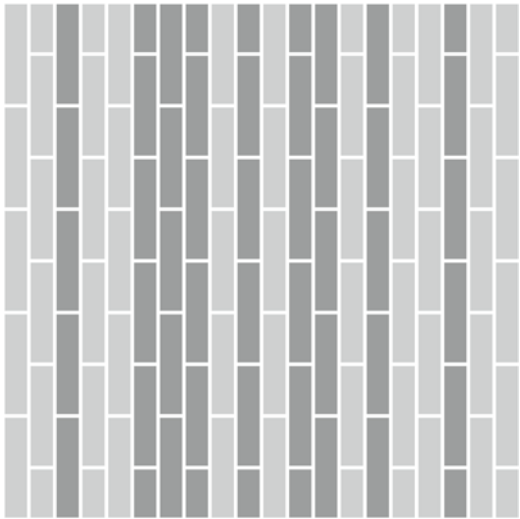
Design Ideas Below are floor layouts showing how to create the design ideas shared in several of the images featured in this brochure.



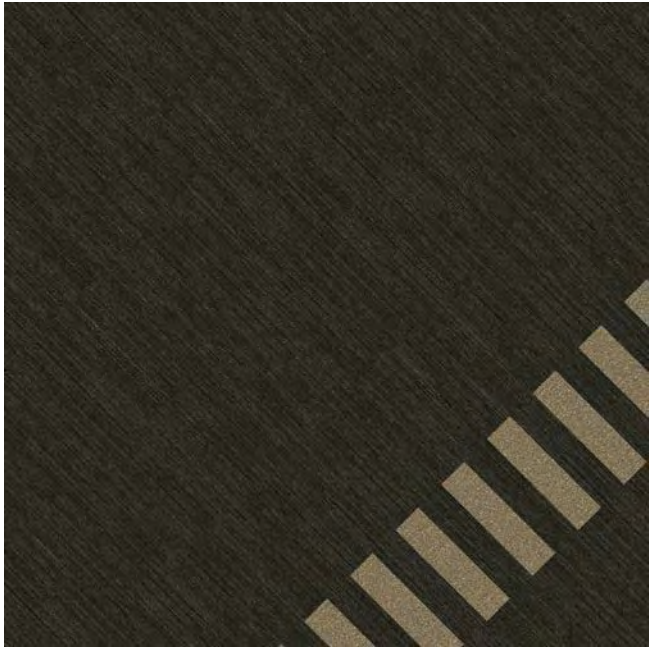
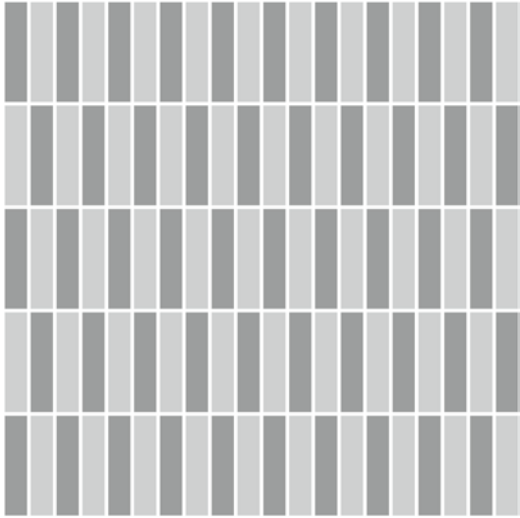
PRODUCT WW880 COLOUR SISAL LOOM  
PRODUCT WW890 COLOUR SISAL DOBBY INSTALLED PATTERN BY TILE



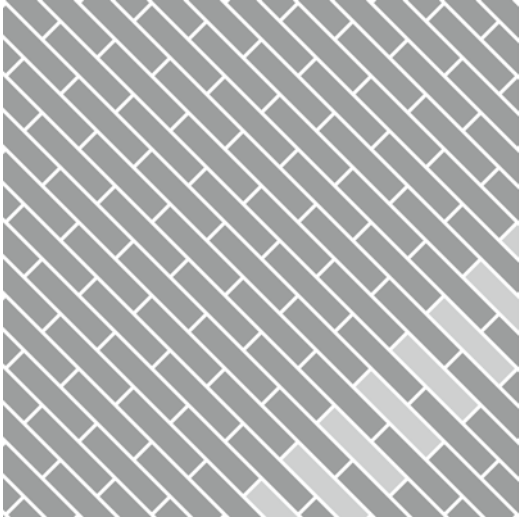
PRODUCT WW880 COLOUR LINEN LOOM  
PRODUCT WW890 COLOUR CHARCOAL DOBBY INSTALLED ASHLAR



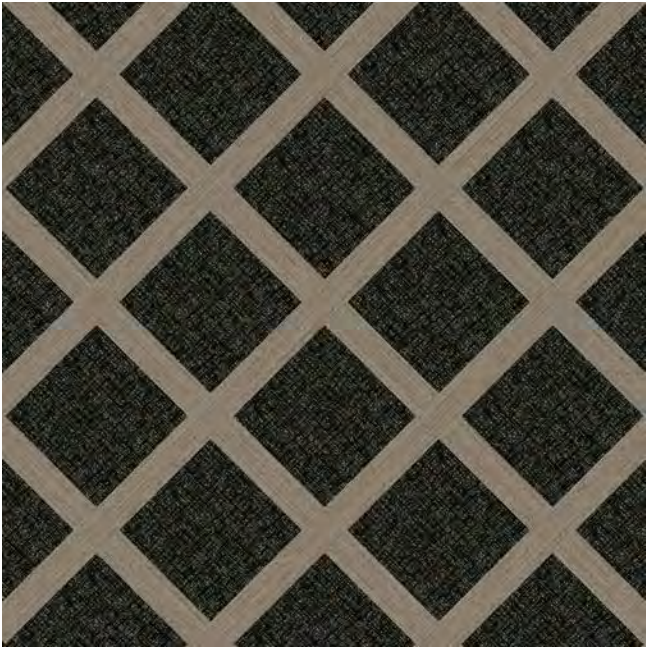
PRODUCT WW870 COLOURS LINEN WEFT, FLANNEL WEFT  
INSTALLED PATTERN BY TILE



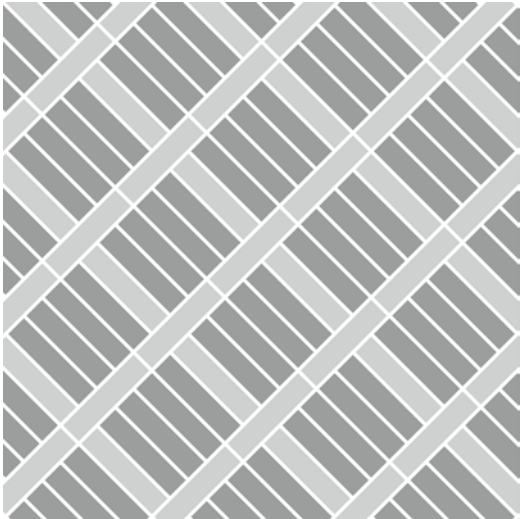
PRODUCT WW880 COLOUR BLACK LOOM  
PRODUCT WW890 COLOUR RAFFIA DOBBY INSTALLED PATTERN BY TILE



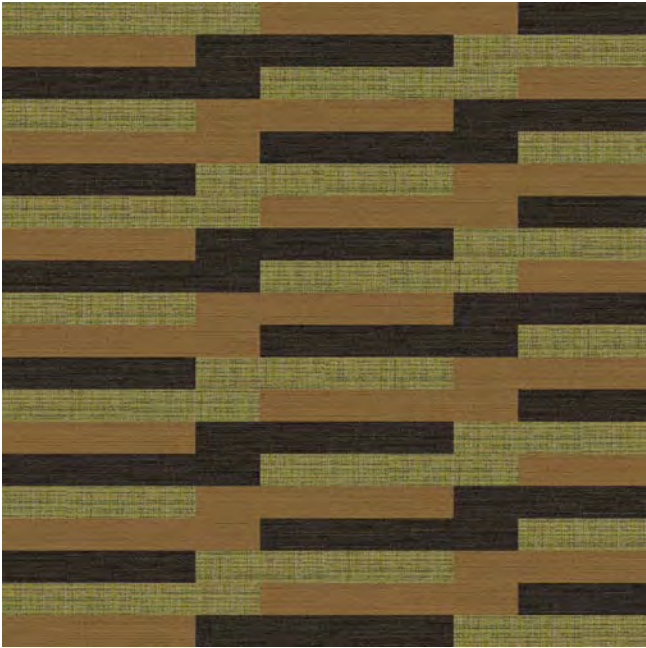
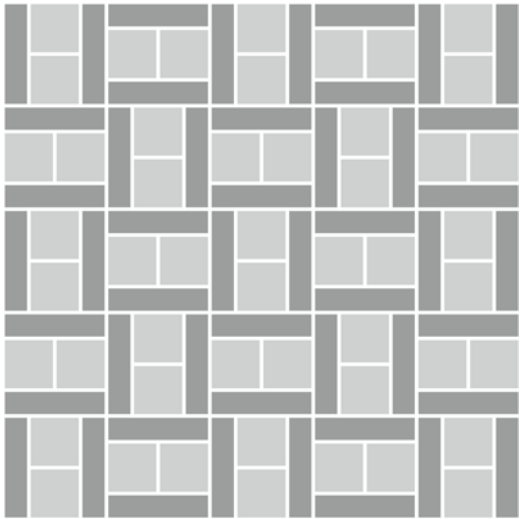
Design Ideas Below are floor layouts showing how to create the design ideas shared in several of the images featured in this brochure.



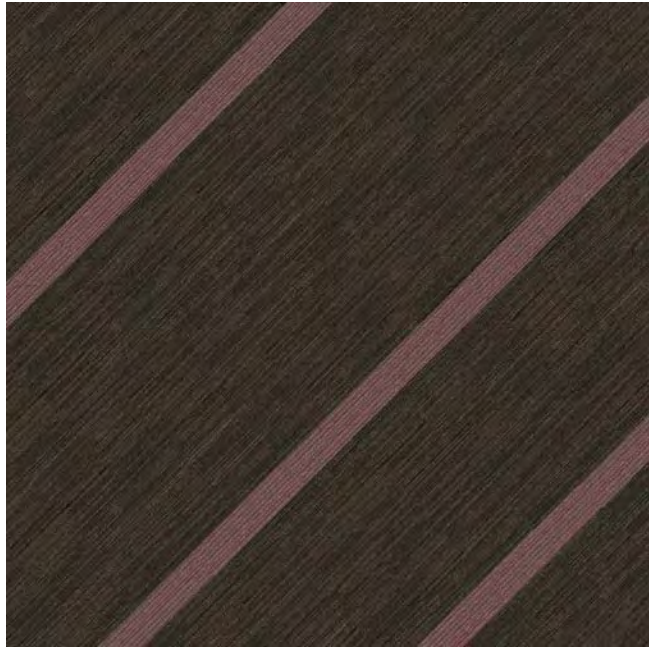
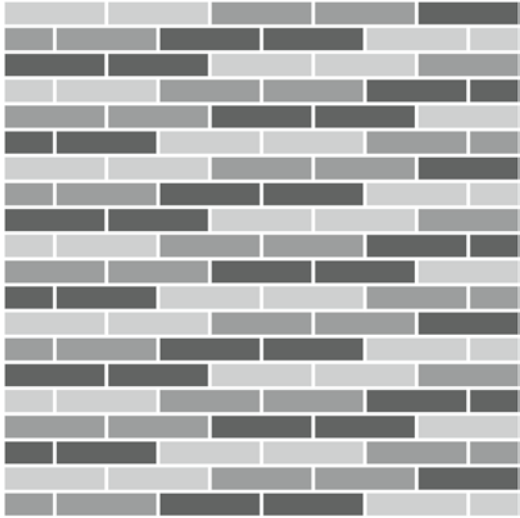
**PRODUCT** WW890 **COLOURS** BLACK DOBBY, NATURAL DOBBY  
**INSTALLED** PATTERN BY TILE



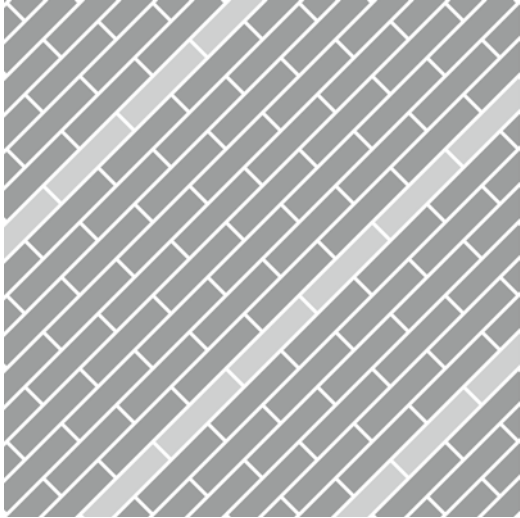
**PRODUCT** WW880 **COLOUR** NATURAL LOOM  
**PRODUCT** SCOTTISH SETT **COLOUR** PLAID NATURAL **INSTALLED** PATTERN BY TILE



**PRODUCT** WW870 **COLOURS** BROWN WEFT, SISAL WEFT  
**PRODUCT** WW895 **COLOUR** GLEN WEAVE **INSTALLED** ASHLAR



**PRODUCT** WW865 **COLOUR** FUCHSIA WARP  
**PRODUCT** WW880 **COLOUR** BROWN LOOM **INSTALLED** PATTERN BY TILE



Specifications

WW870™

Style Code	8111
Product Construction	Tufted Textured Loop
Yarn System	100% Recycled Solution Dyed Nylon
Machine Gauge	1/12
Pile Thickness	3.0 ± 0.5mm
Total Thickness	6.5 ± 0.5mm
Tile Size	25 x 100cm
Area of Use	Commercial Heavy Use
ACCS Grading	Commercial Extra Heavy Duty & Stairs
(Australia & New Zealand Only)	
Lifetime Antimicrobial	Intersept®
Soil / Stain Protection	Protekt <sup>2</sup> ®

Installation Methods



Mod Café™

Style Code	8150
Product Construction	Tufted Textured Loop
Yarn System	100% Recycled Solution Dyed Nylon
Machine Gauge	1/10
Pile Thickness	4.5 ± 0.5mm
Total Thickness	8.0 ± 0.5mm
Tile Size	50 x 50cm
Area of Use	Commercial General Use
ACCS Grading	Commercial Extra Heavy Duty & Stairs
(Australia & New Zealand Only)	
Lifetime Antimicrobial	Intersept®
Soil / Stain Protection	Protekt <sup>2</sup> ®

Installation Methods



WW880™

Style Code	8112
Product Construction	Tufted Textured Tip Sheared Loop
Yarn System	100% Recycled Solution Dyed Nylon
Machine Gauge	1/10
Pile Thickness	3.0 ± 0.5mm
Total Thickness	7.0 ± 0.5mm
Tile Size	25 x 100cm
Area of Use	Commercial Heavy Use
ACCS Grading	Commercial Extra Heavy Duty & Stairs
(Australia & New Zealand Only)	
Lifetime Antimicrobial	Intersept®
Soil / Stain Protection	Protekt <sup>2</sup> ®

Installation Methods



Collins Cottage™

Style Code	8152
Product Construction	Tufted Textured Loop
Yarn System	100% Recycled Solution Dyed Nylon
Machine Gauge	1/10
Pile Thickness	4.0 ± 0.5mm
Total Thickness	8.0 ± 0.5mm
Tile Size	50 x 50cm
Area of Use	Commercial General Use
ACCS Grading	Commercial Extra Heavy Duty & Stairs
(Australia & New Zealand Only)	
Lifetime Antimicrobial	Intersept®
Soil / Stain Protection	Protekt <sup>2</sup> ®

Installation Methods



WW890™

Style Code	8113
Product Construction	Tufted Patterned Textured Loop
Yarn System	100% Recycled Solution Dyed Nylon
Machine Gauge	1/10
Pile Thickness	3.5 ± 0.5mm
Total Thickness	7.5 ± 0.5mm
Tile Size	25 x 100cm
Area of Use	Commercial Heavy Use
ACCS Grading	Commercial Extra Heavy Duty & Stairs
(Australia & New Zealand Only)	
Lifetime Antimicrobial	Intersept®
Soil / Stain Protection	Protekt <sup>2</sup> ®

Installation Methods



Scottish Sett™

Style Code	8151
Product Construction	Tufted Textured Loop
Yarn System	100% Recycled Solution Dyed Nylon
Machine Gauge	1/10
Pile Thickness	4.5 ± 0.5mm
Total Thickness	8.5 ± 0.5mm
Tile Size	50 x 50cm
Area of Use	Commercial General Use
ACCS Grading	Commercial Extra Heavy Duty & Stairs
(Australia & New Zealand Only)	
Lifetime Antimicrobial	Intersept®
Soil / Stain Protection	Protekt <sup>2</sup> ®

Installation Methods



Why Our Modular Flooring?



**Modular Flooring**  
*Performance and flexibility.* Interface's standard backing systems set the industry standard for modular performance. Tiles stay on the floor with no upcurl, no tapping and no rippling effect, yet are easy to selectively replace. Our modular carpet is easier to handle than bulky roll carpet and produces an average of just 2-5% waste compared to roll carpet's average of 15% . And it installs seamlessly with our LVT, no transition strips needed.



**Intersept®**  
*Mold protection.* Our proprietary preservative, Intersept, protects our modular carpet against mould growth and odour-causing bacteria—guaranteed. Intersept treated carpet, with proper maintenance, shows no mould or bacterial growth when tested as per the ASTM E2471 Standard Test Method. Intersept is EPA-approved for safe use in carpet, water insoluble and contains no halogens, heavy metals, phenols or formaldehyde.



**15-Year Warranty**  
Interface products are warranted for 15 years against excessive surface wear, edge ravel, backing separation, shrinking, stretching and static electricy even under castor chair conditions.



**ReEntry**  
*At Interface, an end of life solution* of our products is a reality. ReEntry is our innovative programme to reclaim materials used in our product. Taking back our product at end of life is a service we provide our customers to ensure that none of the products they use will end up in landfill. Whether it is recycling into new product or re-purposing, we see our customer's waste as an opportunity for new product life.



**Protekt2®**  
*Stain protection.* The life and performance of your flooring is extended with Protekt2, our patented stain resistant protection. Protekt2 uses advanced technology to provide a lasting barrier against permanent soiling and staining, which simplifies the cleaning process and enhances the longevity of your carpet. Protekt2 is product specific, please refer to individual product specifications for details.



**Local Manufacturing**  
We combine local responsiveness with a global experience. Being part of the same communities as our customers, we foster collaborative, committed, and productive relationships. Our carpet tiles are manufactured in Australia and China, contributing to local economies and the environment.



**TacTiles®**  
*No glue installation.* Our revolutionary TacTiles installation system eliminates the need for glue, adhering tiles securely together to form a floor that “floats” for greater flexibility, easier replacement and long-term performance. The result? Less mess, less waste and virtually no VOCs, not to mention an environmental footprint that is over 90% lower than that of traditional glue adhesives.



**Health Product Declaration (HPD) –**  
A transparency tool for evaluating whether a product supports Green Chemistry. As part of our work on Health and Materials, Interface continuously reduces the environmental and health impacts of our products through elimination of materials of concern.

Third Party Certifications



**Environmental Product Declaration (EPD)**  
The Environmental Product Declaration (EPD) is a third party verified environmental certification classified as Type III that quantifies and verifies the lifecycle impacts of products and goods according to the International Standards Organization (ISO) 14025, 14040, 14044 and EN 15804. EPDs help customers that are environmentally driven to evaluate the performance of a product and to make the best decision when choosing a product. Interface EPDs can be found on [interface.com](https://www.interface.com).



**Singapore Green Building Product (SGBP)**  
The SGBP certification is designed to evaluate and certify building products that meet specific sustainability and environmental performance criteria. The certification scheme helps building professionals identify products that are sustainable and more carbon efficient. Interface carpet tile products are certified “Leader” and LVT products are at “Excellent” Level.



**Global GreenTag GreenRate - Level A**  
Global GreenTag's GreenRate certification is a product rating system recognised by the Green Building Council of Australia and Green Building Council of New Zealand. Its assessment scheme aligns to the Green Star® Responsible Products program. All Interface products are certified “Level A”.



**NSF Certification**  
NSF International develops public health standards and certification programs that help protect the world's food, water, consumer products and environment. Interface carpet tile products are certified “Gold”.



**Best Practice Guidelines for PVC**  
Our product proudly holds the Best Environmental Practice (BEP) PVC certification, a recognition of compliance with stringent environmental and social criteria in PVC manufacturing. This certification is a key contributor to Green Star certification, aligning with the GBCA's Responsible Products Framework. Our commitment to BEP guidelines demonstrates our dedication to environmental responsibility and product excellence.



**CRI Green Label Plus**  
The Carpet and Rug Insitute (CRI) Green Label Plus sets higher standards for indoor air quality and ensures that customers are purchasing the very lowest emitting products on the market. Interface Carpet Tiles and TacTiles have fulfilled the requirements for this certification.

Do more on [interface.com](https://www.interface.com)

- Browse products, save and share favourites
- See images of products in a variety of room scenes
- Browse floor designs, change colours, upload your own image, download and share
- Get full specifications, sustainability certifications and more
- Sign up to get the latest information on Interface products and news

Our EPDs and certifications contribute credits towards Green Building Council's Green Star® Responsible Products program..

Green Star is the Green Building Council of Australia's sustainability rating system for the built environment. It is used to rate new and existing buildings, new fit-outs, and new precinct developments. The Green Building Council of Australia recognises Responsible Products that may contribute to a Green Star rating through its Responsible Credits.

**[www.interface.com](http://www.interface.com)**

**Australia**

Interface Australia  
local toll free: 1800 804 361

**India**

Interface India  
tel: +91 76249 17934

**South East Asia**

Interface Asia  
tel: +65 6478 1510

**South Korea**

Interface South Korea  
tel: +82 2 555 1734

**Japan**

Interface Japan  
tel: +81(0)3-6892-5513

**Beijing**

Interface China  
tel: +86 10 6590 7810

**Hong Kong**

Interface China  
tel: +852 2802 0838

**Shanghai**

Interface China  
tel: +86 21 6340 3868

09/2024  
SF0059T1



Climate change is undeniable. And reversible. Our mission is to prove it.  
**Join the #ClimateTakeBack and help create a climate fit for life.**