

World Woven Collection

French Seams

Stitch In Time

WW860

WW865

WW870

WW880

WW890

WW895

FLOR

Collins Cottage

Mod Café

Scottish Sett

Interface®

A tribute to global textiles.

World Woven Collection is a classic – beloved for its hand-woven inspired textures. From Northern Europe's utilitarian wools to Japan's revolutionary Saori weaving and France's elegant bouclés, World Woven pays homage to centuries-old weaving traditions and enduring textile crafts across cultures. Bringing the sense of familiarity, warmth and handcrafted authenticity of these familiar fabrics, World Woven offers you distinctive beauty and a world of options.

The collection includes eight core 25 cm x 1 m planks. Four fundamental textures were inspired by plain, woolen textiles. WW870, WW880 and WW890 share 8 go-to neutrals, resembling undyed wools with subtle contrast. WW860 features a 12-color range, extended and refined for today's interiors.

To complement these four foundational styles are four options introducing more detailed patterning, plushness and sophisticated yet subtle color. WW865 features options with rich accent threads and a flat, orderly construction that contrasts the highly textured, yet soft structure of WW895. French Seams & Stitch in Time bring reserved, yet handsome patterns recalling vintage fashion's herringbones and bouclés.

To add eye-catching design moments or dynamic area rugs, look to FLOR. Three styles were developed as complements to the collection. Collins Cottage and Scottish Sett revive the noble houndstooth and plaid while Mod Café renews the playful patterns of the 1950s.

Together, the broad offering of the World Woven Collection brings definition and detail to your interior. And like all Interface products, the World Woven Collection is third-party verified carbon neutral across the full product life cycle through our Carbon Neutral Floors™ program.







WW860 Color Range



103200 NAVY TWEED



103201 VOLCANIC TWEED



103202 RIVERBED TWEED



103203 OAT TWEED



103204 NICKEL TWEED



103205 SHELL TWEED



103206 UMBER TWEED



105351 LINEN TWEED



105352 FLANNEL TWEED



105353 CHARCOAL TWEED



105354 BLACK TWEED



105356 NATURAL TWEED

Specifications

Modular, 25 cm x 1 m	12819
Yarn Manufacturer	Aquafil
Yarn System	100% Recycled Content Nylon
Dye Method	100% Solution Dyed
Construction	Tufted Pattern Loop
Preservative Protection	Intersept®
Soil/Stain Protection	Protekt ² ™
Pile Thickness	0.07 in, 2.8 mm
Pile Density	9,415 oz/yd³
Total Recycled Content	68%
Indoor Air Quality	CRI Green Label Plus #GLP0820

View the full product specification on [interface.com](#)

Installation Methods



ASHLAR



HERRINGBONE

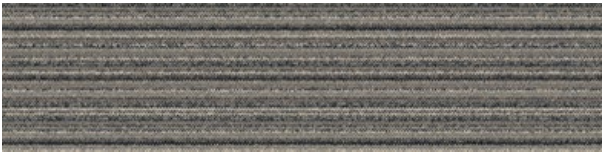


BROWSE IMAGES
ORDER SAMPLES

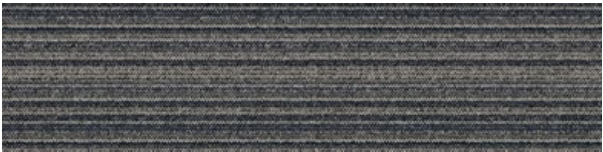
PRODUCT WW860 · COLOR VOLCANIC TWEED · INSTALLED ASHLAR



WW865 Color Range



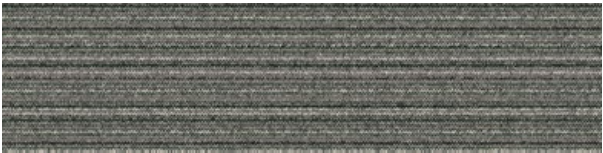
103207 TUNDRA WARP



103208 DUSK WARP



103209 PLATEAU WARP



103210 FOREST WARP



103211 TERRAIN WARP



103212 CARIBBEAN WARP



103213 SAHARA WARP



103214 CAMEL WARP

Specifications

Modular, 25 cm x 1 m	12821
Yarn Manufacturer	Aquafil
Yarn System	100% Recycled Content Nylon
Dye Method	100% Solution Dyed
Construction	Tufted Pattern Loop
Preservative Protection	Intersept®
Soil/Stain Protection	Protekt ² ™
Pile Thickness	0.06 in, 1.4 mm
Pile Density	10,737 oz/yd³
Total Recycled Content	68%
Indoor Air Quality	CRI Green Label Plus #GLP0820

View the full product specification on [interface.com](https://www.interface.com)

Installation Methods



ASHLAR

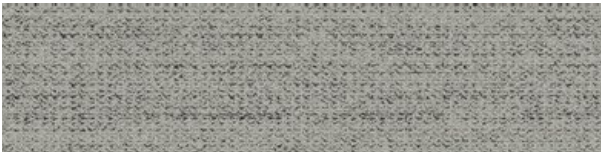


HERRINGBONE



BROWSE IMAGES
ORDER SAMPLES

WW870 Color Range



105343 LINEN WEFT



105344 FLANNEL WEFT



105345 CHARCOAL WEFT



105346 BLACK WEFT



105347 BROWN WEFT



105348 NATURAL WEFT



105349 RAFFIA WEFT



105350 SISAL WEFT

Specifications

Modular, 25 cm x 1 m	13893
Yarn Manufacturer	Aquafil
Yarn System	100% Recycled Content Nylon
Dye Method	100% Solution Dyed
Construction	Tufted Textured Loop
Preservative Protection	Intersept®
Soil/Stain Protection	Protekt ² ™
Pile Thickness	0.10 in, 2.6 mm
Pile Density	7,962 oz/yd³
Total Recycled Content	70%
Indoor Air Quality	CRI Green Label Plus #GLP0820

View the full product specification on [interface.com](#)

Installation Methods



ASHLAR



HERRINGBONE



BROWSE IMAGES
ORDER SAMPLES



PRODUCT WW870 **COLOR** FLANNEL WEFT **INSTALLED** PATTERN BY TILE



WW880 Color Range



105359 LINEN LOOM



105360 FLANNEL LOOM



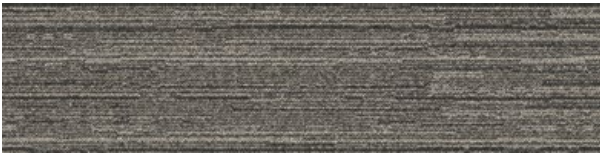
105361 CHARCOAL LOOM



105362 BLACK LOOM



105363 BROWN LOOM



105364 NATURAL LOOM



105365 RAFFIA LOOM



105366 SISAL LOOM

Specifications

Modular, 25 cm x 1 m	12820
Yarn Manufacturer	Aquafil
Yarn System	100% Recycled Content Nylon
Dye Method	100% Solution Dyed
Construction	Tufted Sheared
Preservative Protection	Intersept®
Soil/Stain Protection	Protek ² ™
Pile Thickness	0.12 in, 3 mm
Pile Density	7,563 oz/yd³
Total Recycled Content	70%
Indoor Air Quality	CRI Green Label Plus #GLP0820

View the full product specification on [interface.com](https://www.interface.com)

Installation Methods



ASHLAR



HERRINGBONE



BROWSE IMAGES
ORDER SAMPLES

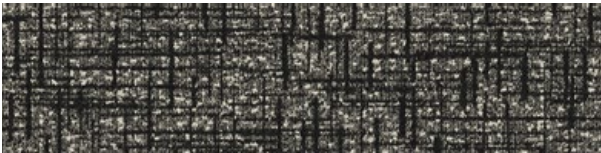
WW890 Color Range



105383 LINEN DOBBY



105384 FLANNEL DOBBY



105385 CHARCOAL DOBBY



105386 BLACK DOBBY



105387 BROWN DOBBY



105388 NATURAL DOBBY



105389 RAFFIA DOBBY



105390 SISAL DOBBY

Specifications

Modular, 25 cm x 1 m	12824
Yarn Manufacturer	Aquafil
Yarn System	100% Recycled Content Nylon
Dye Method	100% Solution Dyed
Construction	Engaged Tufted Pattern Loop
Preservative Protection	Intersept®
Soil/Stain Protection	Protekt ² ™
Pile Thickness	0.12 in, 3.1 mm
Pile Density	8,780 oz/yd³
Total Recycled Content	72%
Indoor Air Quality	CRI Green Label Plus #GLP0820

View the full product specification on [interface.com](#)

Installation Methods



ASHLAR



HERRINGBONE



BROWSE IMAGES
ORDER SAMPLES

PRODUCT WW890 **COLOR** NATURAL DOBBY **INSTALLED** ASHLAR



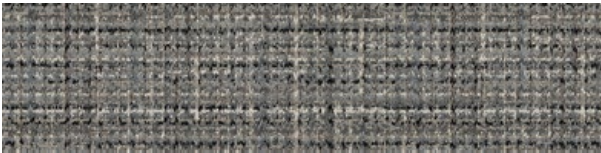
WW895 Color Range



103215 TUNDRA WEAVE



103216 PLATEAU WEAVE



103217 TERRAIN WEAVE



103218 SAHARA WEAVE

Specifications

Modular, 25 cm x 1 m	12822
Yarn Manufacturer	Aquafil
Yarn System	100% Recycled Content Nylon
Dye Method	100% Solution Dyed
Construction	Engaged Tufted Pattern Loop
Preservative Protection	Intersept®
Soil/Stain Protection	Protekt ² ™
Pile Thickness	0.12 in, 2.9 mm
Pile Density	9,310 oz/yd ³
Total Recycled Content	72%
Indoor Air Quality	CRI Green Label Plus #GLP0820

View the full product specification on [interface.com](#)

Installation Methods



ASHLAR



HERRINGBONE



BROWSE IMAGES
ORDER SAMPLES

French Seams™ Color Range



103198 COMPIEGNE



103199 ARCACHON



105604 CHANTILLY



105605 TOULOUSE

Specifications

Modular, 25 cm x 1 m	12555
Yarn Manufacturer	Aquafil
Yarn System	100% Recycled Content Nylon
Dye Method	100% Solution Dyed
Construction	Tufted Cut & Loop
Preservative Protection	Intersept®
Soil/Stain Protection	Protek12™
Pile Thickness	0.09 in, 2.2 mm
Pile Density	8,894 oz/yd³
Total Recycled Content	69%
Indoor Air Quality	CRI Green Label Plus #GLP0820

View the full product specification on [interface.com](#)

Installation Methods



ASHLAR



HERRINGBONE



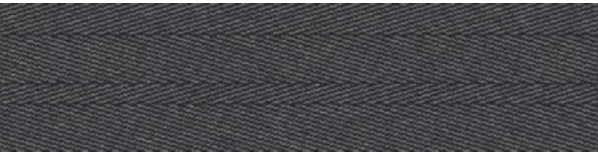
BROWSE IMAGES
ORDER SAMPLES



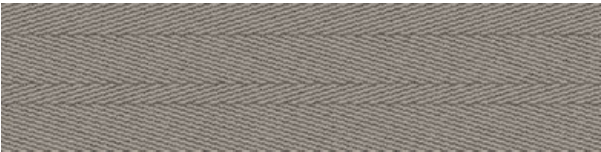
PRODUCT FRENCH SEAMS COLOR COMPIEGNE INSTALLED ASHLAR



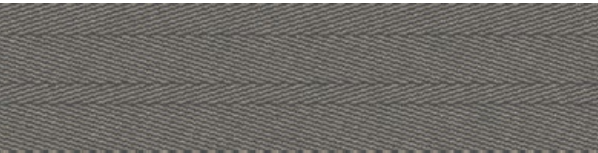
Stitch In Time™ Color Range



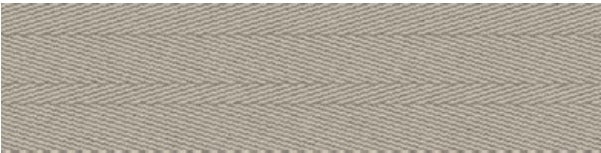
103219 VOLCANIC STITCH



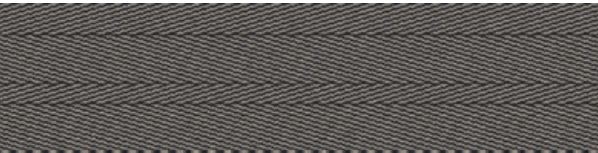
103220 OAT STITCH



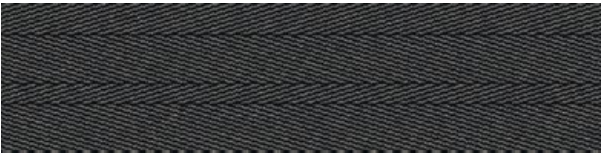
103221 NICKEL STITCH



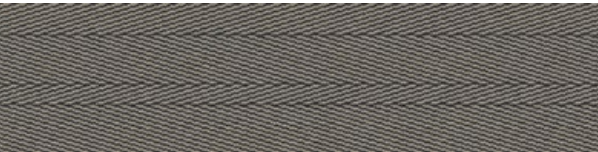
103222 SHELL STITCH



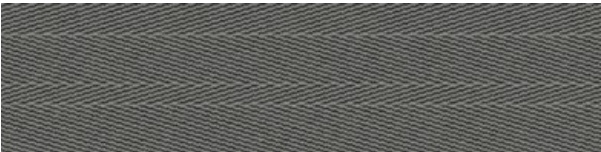
105596 CHARCOAL STITCH



105597 BLACK STITCH



105599 NATURAL STITCH



105600 FLANNEL STITCH

Specifications

Modular, 25 cm x 1 m	13788
Yarn Manufacturer	Aquafil
Yarn System	100% Recycled Content Nylon
Dye Method	100% Solution Dyed
Construction	Tufted Level Loop
Preservative Protection	Intersept®
Soil/Stain Protection	Protekt ² ™
Pile Thickness	0.08 in, 2 mm
Pile Density	11,700 oz/yd ³
Total Recycled Content	71%
Indoor Air Quality	CRI Green Label Plus #GLP0820

View the full product specification on [interface.com](#)

Installation Method



BROWSE IMAGES
ORDER SAMPLES

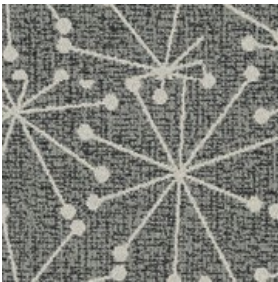




FLOR Mod Café Color Range



105421 LINEN



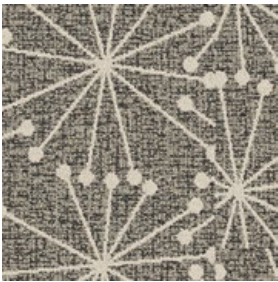
105422 FLANNEL



105423 CHARCOAL



105424 BLACK



105426 NATURAL



105427 RAFFIA

Specifications

Modular, 50 cm x 50 cm	12828
Yarn Manufacturer	Aquafil
Yarn System	100% Recycled Content Nylon
Dye Method	100% Solution Dyed
Construction	Engaged Tufted Pattern Loop
Preservative Protection	Intersept®
Soil/Stain Protection	Protekt ² ™
Pile Thickness	0.121 in, 3.1 mm
Pile Density	8,628 oz/yd ³
Total Recycled Content	85%
Indoor Air Quality	CRI Green Label Plus #GLP0820

Installation Method



MONOLITHIC



BROWSE IMAGES
ORDER SAMPLES



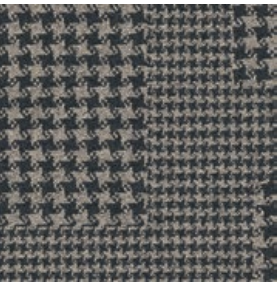
PRODUCT FLOR MOD CAFÉ COLORS LINEN & NATURAL INSTALLED PATTERN BY TILE



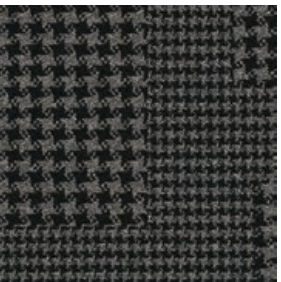
FLOR Collins Cottage Color Range



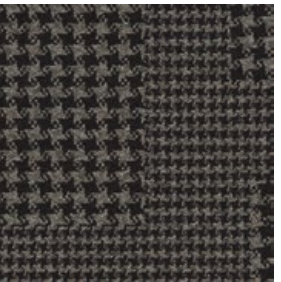
105413 LINEN



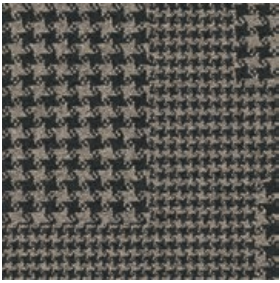
105415 CHARCOAL



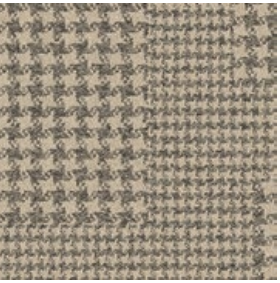
105416 BLACK



105417 BROWN



105418 NATURAL



105419 RAFFIA

Specifications

Modular, 50 cm x 50 cm	12823
Yarn Manufacturer	Aquafil
Yarn System	100% Recycled Content Nylon
Dye Method	100% Solution Dyed
Construction	Engaged Tufted Pattern Loop
Preservative Protection	Intersept®
Soil/Stain Protection	Protekt ² ™
Pile Thickness	0.145 in, 3.7 mm
Pile Density	6,455 oz/yd ³
Total Recycled Content	84%
Indoor Air Quality	CRI Green Label Plus #GLP0820

Installation Method



NON DIRECTIONAL



BROWSE IMAGES
ORDER SAMPLES

FLOR Scottish Sett Color Range



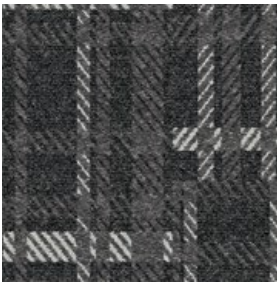
105429 LINEN



105430 FLANNEL



105431 CHARCOAL



105432 BLACK



105434 NATURAL

Specifications

Modular, 50 cm x 50 cm	12830
Yarn Manufacturer	Aquafil
Yarn System	100% Recycled Content Type 6,6 Nylon
Dye Method	100% Solution Dyed
Construction	Engaged Tufted Pattern Loop
Preservative Protection	Intersept®
Soil/Stain Protection	Protekt ² ™
Pile Thickness	0.143 in, 3.6 mm
Pile Density	7,301 oz/yd³
Total Recycled Content	85%
Indoor Air Quality	CRI Green Label Plus #GLP0820

Installation Method



NON DIRECTIONAL



BROWSE IMAGES
ORDER SAMPLES

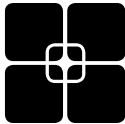


PRODUCT WW880 COLOR NATURAL LOOM
PRODUCT FLOR SCOTTISH SETT COLOR NATURAL INSTALLED PATTERN BY TILE

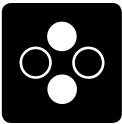
Why Our Modular Flooring?



Modular Flooring
Performance and flexibility. Interface's standard backing systems set the industry standard for modular performance. Tiles stay on the floor with no upcurl, no taping and no rippling effect, yet are easy to selectively replace. Our modular carpet is easier to handle than bulky roll carpet and produces an average of just 3-4% waste compared to roll carpet's average of 14%. And it installs seamlessly with our LVT, no transition strips needed.



TacTiles™
No glue installation. Our revolutionary TacTiles installation system eliminates the need for glue, adhering tiles securely together to form a floor that “floats” for greater flexibility, easier replacement and long-term performance. The result? Less mess, less waste and virtually no VOCs, not to mention an environmental footprint that is over 90% lower than that of traditional glue adhesives. TacTiles are approved for use on GlasBac™, CQuest™GB, CQuest™Bio and CQuest™BioX.



Intersept®
Mold protection. Our proprietary preservative, Intersept, protects our modular carpet against mold growth and odor-causing bacteria—guaranteed. Intersept treated carpet, with proper maintenance, shows no mold or bacterial growth when tested per the ASTM E2471 Standard Test Method. Intersept is EPA approved for safe use in carpet, water insoluble and contains no halogens, heavy metals, phenols or formaldehyde. Intersept is standard in Interface carpet tile products backed with GlasBac, CQuestGB, ReadyBac™ and CushionBac Renew™.



Environmental Product Declaration (EPD)
A statement of product ingredients and environmental impacts over the entire life cycle of a product. A comprehensive life cycle assessment (LCA) is performed to ISO standards to develop an EPD, after which both the EPD and LCA must be third party verified.



Health Product Declaration (HPD)
A transparency tool for evaluating whether a product supports Green Chemistry. As part of our work on Health and Materials, Interface continuously reduces the environmental and health impacts of our products through elimination of materials of concern.



ReEntry™
Recyclable. Through our ReEntry program we reclaim and recycle our carpet tile and Sound Choice™ LVT. ReEntry is the only third party certified recycling system among North American flooring manufacturers.



Sustainability Transparency
Transparency and certified sustainability leadership come standard on Interface products. We enlist outside partners to help us evaluate the entire product life cycle and reduce the environmental and human health impact of our flooring. And, carpet products made in our US facilities are made with 99% renewable energy.



FLOR by Interface offers lush textures and bold patterns that are anything but business as usual. FLOR carpet tiles are the perfect design accent for offices, conference rooms and high-profile collaborative spaces – as area rugs or wall-to-wall installations. With all the performance benefits of Interface products, including the 15-year commercial warranty, they'll get the job done for years to come.



CRI Green Label Plus
An independent testing program that identifies carpet and adhesives with very low emissions of VOCs to help improve indoor air quality.



NSF 140 Sustainable Carpet Assessment
The only carpet sustainability standard in North America that evaluates the environmental impact of carpet for its entire life cycle.

📍 **Samples**

Register and order samples at interface.com. Not near a computer? You can also request samples by calling one of the numbers below.

United States
1.877.605.1500

Canada
1.866.398.3192

interface.com

- Do more on interface.com
- Browse products and order samples
 - Save and share favorites
 - See images of products in a variety of room scenes
 - Browse floor designs, change colors, upload your own image, download and share
 - Get full specifications, sustainability certifications and more
 - Check order status and inventory availability
 - Sign up to get the latest information on Interface products and news

InterCircle Sample Return

Help us close the loop on the carpet sampling process. Through our InterCircle Sample Return program, sample materials stay out of the landfill and are re-used as samples until it is time to recycle them into new carpet. By reducing sample production material and diverting old materials from the landfill, we can reduce our overall environmental footprint.

Call 1.877.605.1500 (U.S.) or 1.866.398.3192 (Canada) to order a sample return bag with a prepaid return label.

We have tried our very best to accurately represent product colors. However, due to the nature of printed materials, color of actual products may vary slightly. Please request a sample to see actual product color.

All product specifications reflect averages derived from product sample testing, are subject to normal manufacturing and testing tolerances and inherent pattern variances, and may be changed without notice. For more information about these and other important attributes of the product(s) described herein, including recycled content and product warranty information, please see interface.com/disclaimer.

interface.com

United States Headquarters

1280 West Peachtree Street NW
Atlanta, GA 30309
1.800.634.6032

Canadian Headquarters

233 Lahr Drive
Belleville, ON K8N 5S2
1.800.267.2149 ext. 52128

06/2024



Climate change is undeniable. And reversible. Our mission is to prove it.
Join the #ClimateTakeBack and help create a climate fit for life.