

Winning Team

www.interface.com

United States Headquarters
1280 West Peachtree Street NW
Atlanta, GA 30309
1.800.634.6032

Canadian Headquarters
233 Lahr Drive
Belleville, ON K8N 5S2
1.800.267.2149 ext.52128

Brazilian Headquarters
Rua Surubim, 577 - Conjuntos
73/74 7º Andar
04571-050 - São Paulo - SP
+ 55 11 2196 0900

Latin American Headquarters
Montes Urales # 415 Piso 6
Col. Lomas de Chapultepec
México City, D.F. 11000
Mexico
+ 52 55 6395 5100

CIM # IFS00830 11/2019



Climate change is undeniable. And reversible. Our mission is to prove it. Join the #ClimateTakeBack and help create a climate fit for life.

Interface®

Winning Team™

No one competes for second place and we're no exception. We've put together an all-star lineup of hard and soft flooring to help you create diverse, beautiful floors throughout your space. We call it our Winning Team.

Get all the benefits of i2® from both Ice Breaker™ and The Standard™, including the ability to blend current and future orders without concern for the dye lots. These 50cm carpet styles feature new colors that pair perfectly with our 25cm x 1m Studio Set™ LVT. The refreshed color line expands the neutrals that most projects demand and introduces the vibrant accents that we all crave.

And like all of our products around the world, those in Winning Team are carbon neutral ... just another one of steps we take on our path toward creating a climate fit for life. Join the **#ClimateTakeBack** movement.





PRODUCT ICE BREAKER COLORS 105785 RARE EARTH, 106198 SILICA
INSTALLED NON DIRECTIONAL

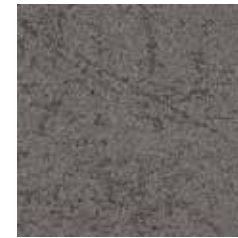


PRODUCT ICE BREAKER COLOR 106195 PERIDOT
PRODUCT THE STANDARD COLOR 106183 AGATE INSTALLED NON DIRECTIONAL





Ice Breaker™ Colorline



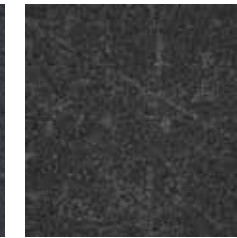
105770 CONCRETE



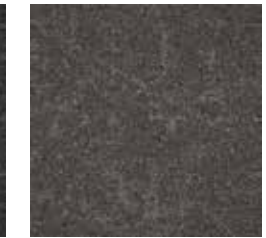
105771 GRANITE



105772 BLUESTONE



105773 JETMIST



105776 AGATE



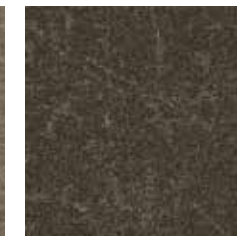
105778 MAGMA



105780 BROWNSTONE



105782 CORNERSTONE



105785 RARE EARTH



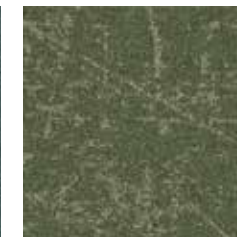
106192 CHARIOTE



106193 LAZULI



106194 LARIMAR



106195 PERIDOT



106196 GARNET



106197 CARNELIAN



106198 SILICA

Specifications **i2**

Modular, 50cm x 50cm	1473002500
Backing System	GlasBac® Tile
Yarn Manufacturer	Universal
Yarn System	Post-Consumer Content Type 6,6 Nylon
Color System	100% Solution Dyed
Construction	Tufted Textured Loop
Lifetime Antimicrobial	Intersept®
Soil/Stain Protection	Protekt2®
Pile Thickness	0.071 in., 1.8 mm
Pile Density	8,620
Total Recycled Content	72%
Indoor Air Quality	CRI Green Label Plus #GLP0820



The Standard™ Colorline



106176 MAGMA



106177 CONCRETE



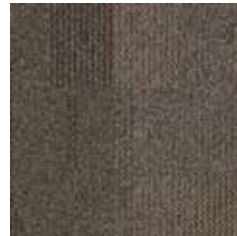
106178 GRANITE



106179 JETMIST



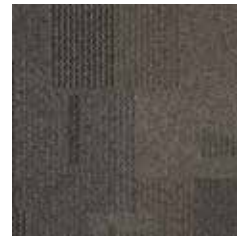
106180 CORNERSTONE



106181 RARE EARTH



106182 BROWNSTONE



106183 AGATE



106184 SILICA



106185 CARNELIAN



106186 GARNET



106187 PERIDOT



106188 LARIMAR



106189 LAZULI



106190 CHARIOTE



106191 BLUESTONE

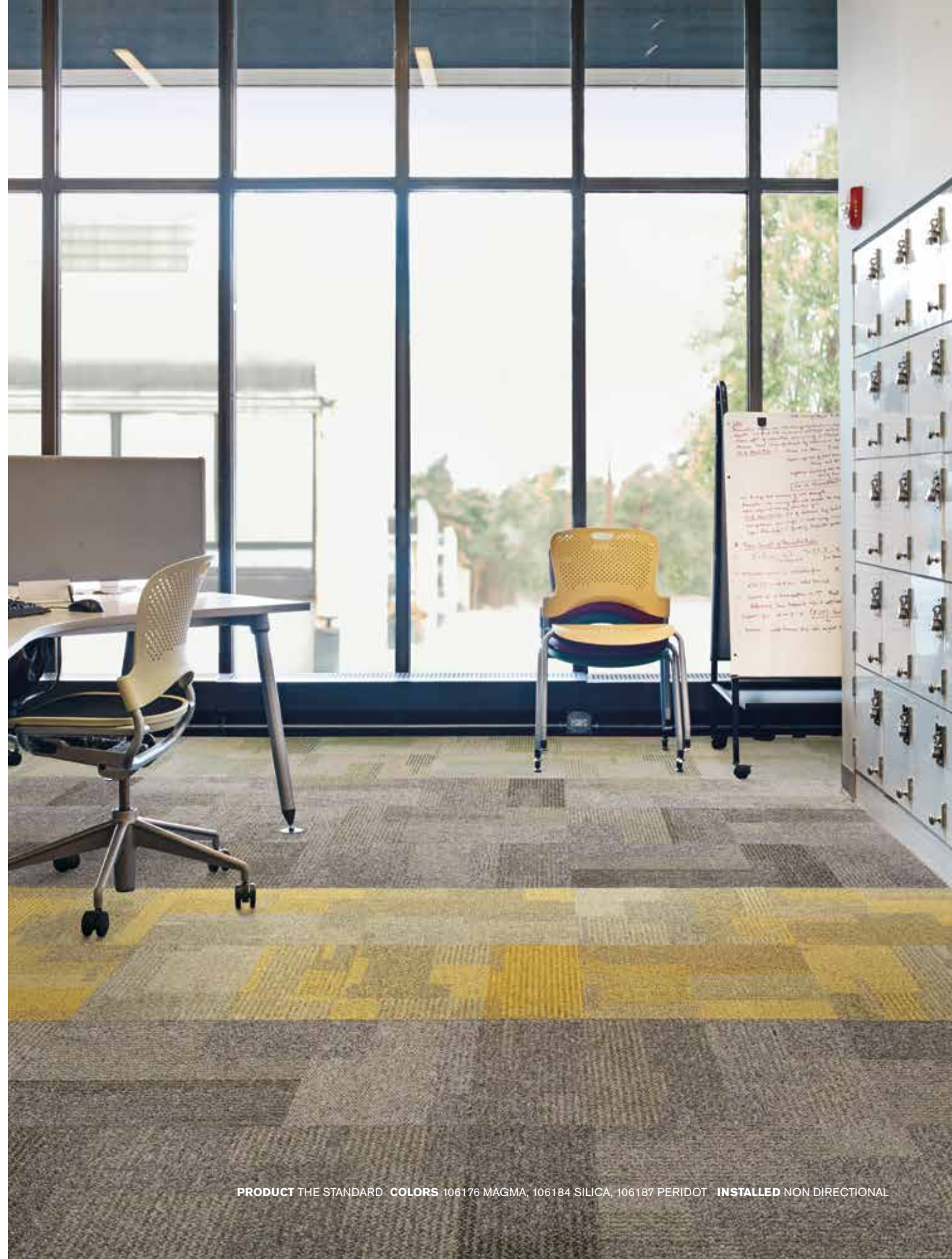
Specifications



Modular, 50cm x 50cm	1467302500
Backing System	GlasBac® Tile
Yarn Manufacturer	Universal
Yarn System	Post-Consumer Content Type 6,6 Nylon
Color System	100% Solution Dyed
Construction	Tufted Textured Loop
Lifetime Antimicrobial	Intersept®
Soil/Stain Protection	Protekt2®
Pile Thickness	0.074 in., 1.9 mm
Pile Density	7,297
Total Recycled Content	72%
Indoor Air Quality	CRI Green Label Plus# GLP0820



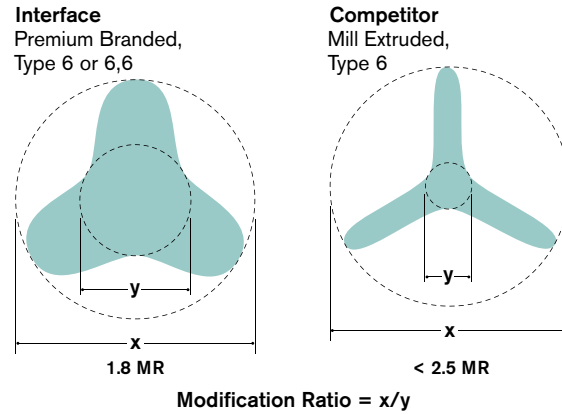
NON DIRECTIONAL



Why Interface? | Performance

Beauty That Lasts

Fiber We start with the best—commercial-grade, solution dyed fibers with a low modification (MR) ratio. A lower MR means better performance. The result? High performance fibers that don't fade or bleach out.



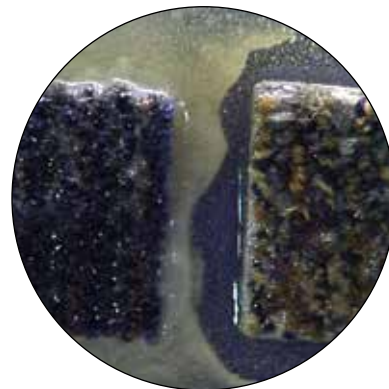
Passing the Test

Industry standard wear tests just aren't tough enough. So, we developed our own—the **Appearance Retention Test (ART)**. ART considers real world conditions—wear, soiling and maintenance—for up to 20 year-increments. If an Interface style doesn't pass, we won't launch it.



Breathe Easier

Intersept® Only Interface carpet tiles are protected with Intersept, our safe and effective preservative that protects against odor-causing microorganisms. It's built into the backing system, so it won't wear off or wash away.



[interface.com/intersept](https://www.interface.com/intersept)

Maintenance Made Easy

[interface.com/maintenance](https://www.interface.com/maintenance)

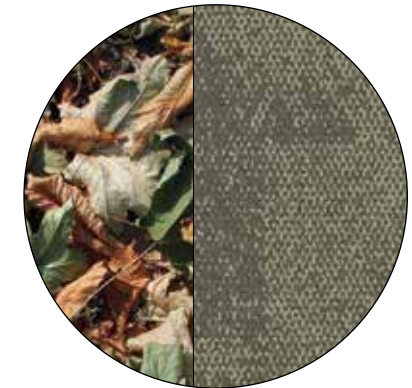
Simple vacuuming, spot cleaning and routine deep cleaning are all you need—no special equipment or cleaning solutions.



Inspired by Nature

[interface.com/i2](https://www.interface.com/i2)

i2® Nature doesn't design with perfectly matched materials, so why should we? Our i2 products are made to blend, not match. That means no dye lot concerns, so you order what you need when you need it. Bonus: Many i2 styles install with as little as 1.5% waste.



Glue-free Installation

[interface.com/tactiles](https://www.interface.com/tactiles)

TacTiles® Just peel, pull and stick for a hassle-free, durable installation. No mess, no drying time and little, if any, future floor prep. And TacTiles connectors can be recycled with Interface carpet tiles.



We Back It Up

[interface.com/warranty](https://www.interface.com/warranty)

All Interface carpet tiles come with our standard **15-year warranty**. No ifs, ands or buts.

Why Interface? | Sustainability Leadership

Zero Carbon

[interface.com/carbonneutral](https://www.interface.com/carbonneutral)

Carbon Neutral Floors™ Interface is the first global flooring manufacturer to declare that ALL products globally are third party verified carbon neutral throughout their entire life cycle. That means we zero out all greenhouse gas emissions (GHGs) associated with our carpet tile and LVT from creation to end-of-life, resulting in the lowest carbon footprint in the industry.

We're not adding excess carbon to the atmosphere, and when you buy from us, neither are you.



Going Beyond Zero

[interface.com/climatetakeback](https://www.interface.com/climatetakeback)

Climate Take Back™ Interface has been on a purpose-driven journey to eliminate its negative environmental impact since 1994. We've achieved Mission Zero® success, and now live zero everyday. Our bold mission continues with our commitment to overcoming the biggest challenge facing humanity—reversing global warming.



Closing the Loop

[interface.com/reentry](https://www.interface.com/reentry)

ReEntry® We want our carpet tile and LVT back. Through our ReEntry program we reclaim and recycle our used carpet tile and LVT and turn it into new flooring. We'll even take many of our competitors' products.



Where We Are Going

[interface.com/climatetakeback](https://www.interface.com/climatetakeback)

Climate Take Back™ With Mission Zero in sight, we're taking things a step further. We've changed our company. It's time to change the world. Climate Take Back is our bold new mission to reverse global warming. Bold statement? Maybe, but see how we back it up: [interface.com/climatetakeback](https://www.interface.com/climatetakeback).



Climate change is undeniable. And reversible. Our mission is to prove it. Join the #ClimateTakeBack and help create a climate fit for life.

Rethinking the Supply Chain

[interface.com/net-works](https://www.interface.com/net-works)

Net-Works® Our Net-Works® partnership is an innovative approach to a circular economy. Fishermen in the Philippines and Cameroon collect waste nets and sell them to the fiber manufacturer, Aquafil, for use in their 100% recycled content nylon. We use that nylon to offer you high performance carpet tiles with up to 90% total recycled content. Everybody wins.



All product specifications reflect averages derived from product sample testing, are subject to normal manufacturing and testing tolerances and inherent pattern variances, and may be changed without notice. For more information about these and other important attributes of the product(s) described herein, including recycled content and product warranty information, please see www.interface.com/disclaimer.

Printed on 50% post consumer waste (PCW) fiber manufactured using wind power.

We have tried our very best to accurately represent product colors. However, due to the nature of printed materials, color of actual products may vary slightly. Please request a sample to see actual product color.