

A modern interior space featuring a dark, patterned carpet. In the center, a black leather chair with a curved, modern design sits on a small metal stand. To the right, a glass and metal staircase with a glass railing leads up. The background is a light gray wall. The overall aesthetic is clean and contemporary.

Whole Earth Collection

WE151
WE152
WE153
WE154

Interface®

Whole Earth™ Collection

Special thanks to Haworth® for use of their headquarters in Holland, MI for all images.

Nature carpets the ground with endless textures blended in seamless compositions. Whole Earth™ was inspired by this design scheme—organic forms and curvilinear lines that fall together effortlessly without revealing the shape of each tile carrying the pattern.

Available in 25 cm x 1 m planks, the Whole Earth Collection explores nature's floors from the forest to the prairie and places in between. WE151, WE152 and WE153 share 21 neutral colorways with WE154 available in 16*.

When you specify flooring from Interface, you're selecting products that are carbon neutral across their full product life cycle through our third party verified Carbon Neutral Floors™ program.

*Remaining five colors may be custom ordered.



PRODUCT WE152 COLOR 104426 PEWTER
PRODUCT WE154 COLOR 104458 PEWTER INSTALLED ASHLAR





PRODUCT WE151 COLOR 104481 ONYX
PRODUCT WE153 COLOR 104449 ONYX INSTALLED ASHLAR





PRODUCT WE151 COLOR 104472 BISCUIT INSTALLED ASHLAR

WE151 Colorline



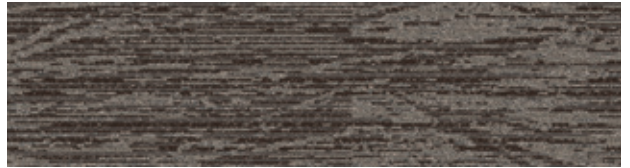
104466 ESPRESSO



104467 TEAK*



104468 CAPPUCCINO



104469 DRIFTWOOD



104470 TOFFEE*



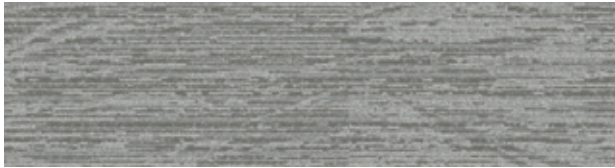
104471 WHEAT



104472 BISCUIT



104473 DOVE



104474 PEWTER



104475 TARRAGON*



104476 MICA



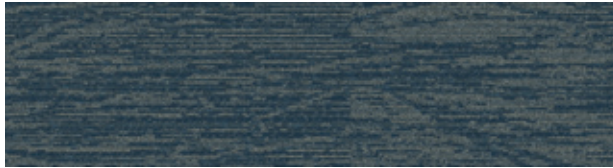
104477 PATINA*



104478 SLATE*



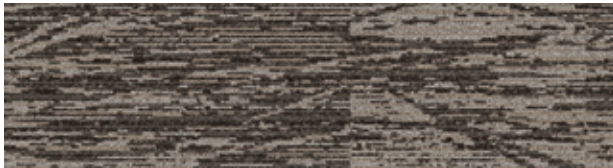
104479 STORM



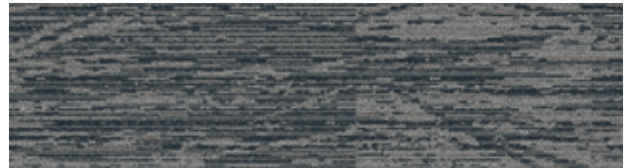
104480 MIDNIGHT



104481 ONYX



106266 MUSHROOM



106267 GRANITE



106268 STERLING



106269 TOPAZ



106270 MOUSE

Specifications

Modular, 25cm x 1m	12552
Yarn Manufacturer	Aquafil
Yarn System	100% Recycled Content Nylon
Color System	100% Solution Dyed
Construction	Tufted Cut & Loop
Lifetime Antimicrobial	Intersept®
Soil/Stain Protection	Protekt2®
Pile Thickness	0.146 in., 3.7 cm
Pile Density	5,425
Total Recycled Content	Up to 84%
Indoor Air Quality	CRI Green Label Plus #GLP0820

View the full product specification on [interface.com](https://www.interface.com).

Installation Methods



ASHLAR



HERRINGBONE



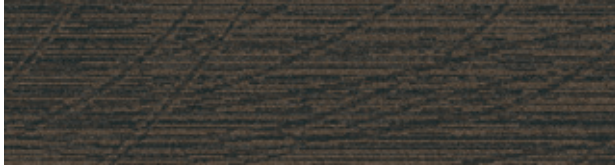
BROWSE IMAGES
ORDER SAMPLES





PRODUCT WE152 COLOR 104432 MIDNIGHT INSTALLED ASHLAR

WE152 Colorline



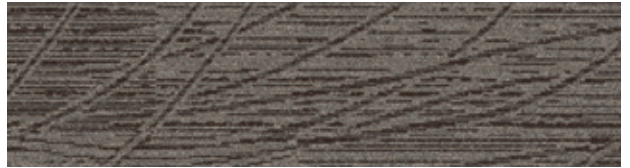
104418 ESPRESSO



104419 TEAK*



104420 CAPPUCCINO



104421 DRIFTWOOD



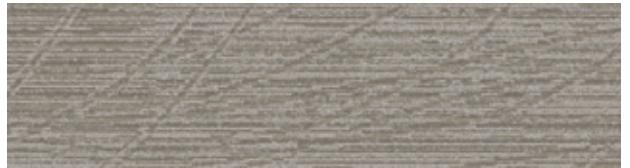
104422 TOFFEE*



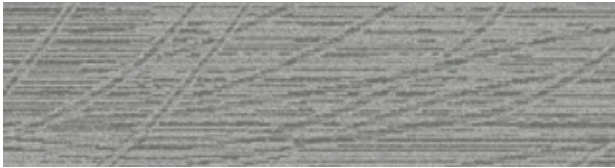
104423 WHEAT



104424 BISCUIT



104425 DOVE



104426 PEWTER



104427 TARRAGON*



104428 MICA



104429 PATINA*



104430 SLATE*



104431 STORM



104432 MIDNIGHT



104433 ONYX



106274 MUSHROOM



106275 GRANITE



106276 STERLING



106277 TOPAZ



106278 MOUSE

Specifications

Modular, 25cm x 1m	12499
Yarn Manufacturer	Aquafil
Yarn System	100% Recycled Content Nylon
Color System	100% Solution Dyed
Construction	Tufted Cut & Loop
Lifetime Antimicrobial	Intersept®
Soil/Stain Protection	Protekt ² ®
Pile Thickness	0.146 in., 3.7 cm
Pile Density	5,425
Total Recycled Content	Up to 84%
Indoor Air Quality	CRI Green Label Plus #GLP0820

View the full product specification on [interface.com](https://www.interface.com).

Installation Methods



ASHLAR



HERRINGBONE



BROWSE IMAGES
ORDER SAMPLES





PRODUCT WE153 COLOR 104444 MICA INSTALLED ASHLAR

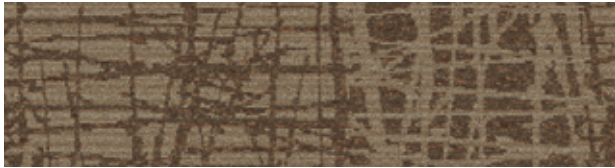
WE153 Colorline



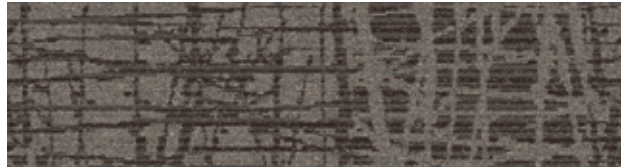
104434 ESPRESSO



104435 TEAK*



104436 CAPPUCCINO



104437 DRIFTWOOD



104438 TOFFEE*



104439 WHEAT



104440 BISCUIT



104441 DOVE



104442 PEWTER



104443 TARRAGON*



104444 MICA



104445 PATINA*

*Contact your sales rep or scan the QR code for samples. This color is not swatched in the sample book.



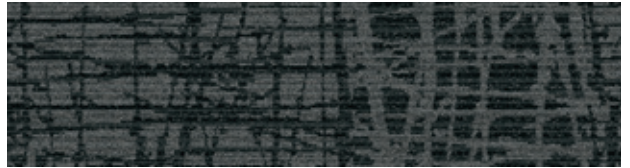
104446 SLATE*



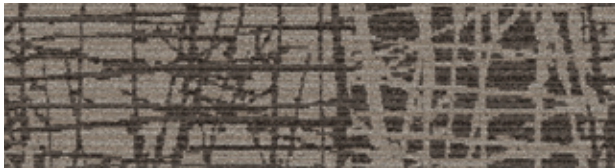
104447 STORM



104448 MIDNIGHT



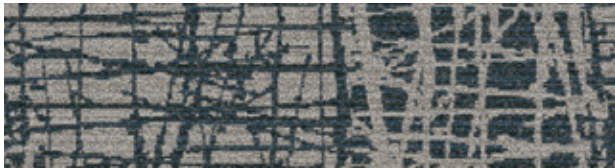
104449 ONYX



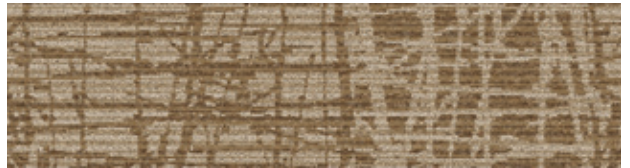
106282 MUSHROOM



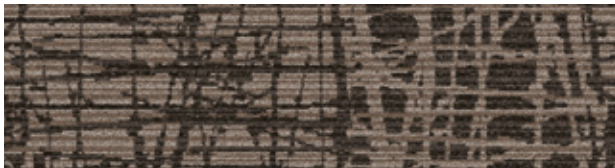
106283 GRANITE



106284 STERLING



106285 TOPAZ



106286 MOUSE

Specifications

Modular, 25cm x 1m	12500
Yarn Manufacturer	Aquafil
Yarn System	100% Recycled Content Nylon
Color System	100% Solution Dyed
Construction	Tufted Cut & Loop
Lifetime Antimicrobial	Intersept®
Soil/Stain Protection	Protekt ² ®
Pile Thickness	0.146 in., 3.7 cm
Pile Density	5,425
Total Recycled Content	Up to 84%
Indoor Air Quality	CRI Green Label Plus #GLP0820

View the full product specification on [interface.com](https://www.interface.com).

Installation Methods



ASHLAR



HERRINGBONE



BROWSE IMAGES
ORDER SAMPLES





PRODUCT WE154 COLOR 104463 STORM INSTALLED ASHLAR

WE 154 Colorline



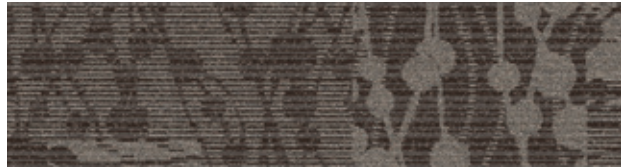
104450 ESPRESSO



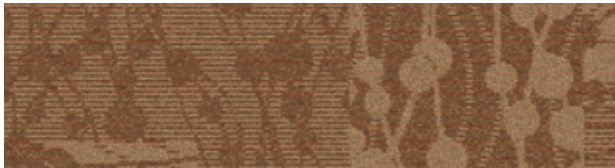
104451 TEAK*



104452 CAPPUCCINO



104453 DRIFTWOOD



104454 TOFFEE*



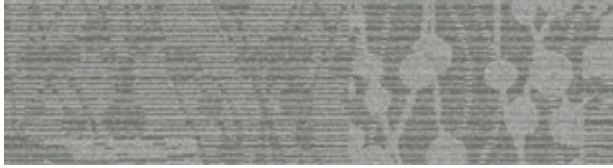
104455 WHEAT



104456 BISCUIT



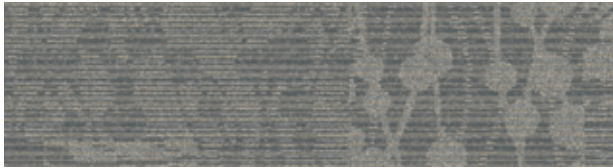
104457 DOVE



104458 PEWTER



104459 TARRAGON*



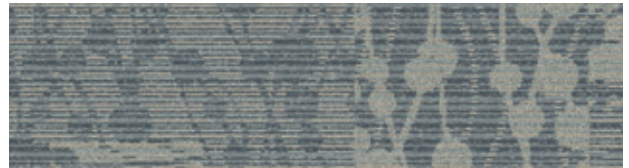
104460 MICA



104461 PATINA*



104462 SLATE*



104463 STORM



104464 MIDNIGHT



104465 ONYX

Specifications

Modular, 25cm x 1m	12551
Yarn Manufacturer	Aquafil
Yarn System	100% Recycled Content Nylon
Color System	100% Solution Dyed
Construction	Tufted Cut & Loop
Lifetime Antimicrobial	Intersept®
Soil/Stain Protection	Protekt ² ®
Pile Thickness	0.146 in., 3.7 cm
Pile Density	5,425
Total Recycled Content	Up to 84%
Indoor Air Quality	CRI Green Label Plus #GLP0820

View the full product specification on [interface.com](https://www.interface.com).

Installation Methods



ASHLAR



HERRINGBONE



BROWSE IMAGES
ORDER SAMPLES

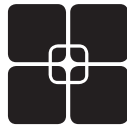
Why Our Modular Flooring?



Modular Flooring

Performance and flexibility.

Interface's standard backing systems set the industry standard for modular performance. Tiles stay on the floor with no upcurl, no tapping and no rippling effect, yet are easy to selectively replace. Our modular carpet is easier to handle than bulky roll carpet and produces an average of just 3-4% waste compared to roll carpet's average of 14%. And it installs seamlessly with our LVT, no transition strips needed.



TacTiles™

No glue installation. Our revolutionary TacTiles installation system eliminates the need for glue, adhering tiles securely together to form a floor that "floats" for greater flexibility, easier replacement and long-term performance. The result? Less mess, less waste and virtually no VOCs, not to mention an environmental footprint that is over 90% lower than that of traditional glue adhesives. TacTiles are approved for use on GlasBac™, GlasBacRE, CQuest™GB, Graphlar™ and Graphlex™.



Intersept®

Mold protection. Our proprietary preservative, Intersept, protects our modular carpet against mold growth and odor-causing bacteria—guaranteed. Intersept treated carpet, with proper maintenance, shows no mold or bacterial growth when tested per the ASTM E2471 Standard Test Method. Intersept is EPA approved for safe use in carpet, water insoluble and contains no halogens, heavy metals, phenols or formaldehyde. Intersept is standard in Interface carpet tile products backed with GlasBac, GlasBacRE, CQuestGB, ReadyBac™, and CushionBac Renew™.

Samples

Order samples at interface.com. You'll receive email order confirmations, 24/7 access to order status and more. Not near a computer? You can also request samples by calling one of the numbers below.

United States
1.877.605.1500

Canada
1.866.398.3192

Brazil
+ 5511.2196.0900

Latin America
+ 52.55.2791.6812

interface.com

Register at interface.com to:

- Browse products and order samples
- View carpet in a variety of room scenes
- Browse floor designs, change colors, view as a grid or in a room, download and share
- Check order status and inventory availability
- Sign up to get the latest information on Interface products and news

InterCircle Sample Return

Help us close the loop on the carpet sampling process. Through our InterCircle Sample Return program, sample materials stay out of the landfill and are re-used as samples until it is time to recycle them into new carpet. By reducing sample production material and diverting old materials from the landfill, we can reduce our overall environmental footprint.

Call 1.877.605.1500 (U.S.) or 1.866.398.3192 (Canada) to order a sample return bag with a prepaid return label.



ReEntry™

Recyclable. Through our ReEntry program, we reclaim all Interface carpet tile. The result? Carpet tile products with up to 85% total recycled content, including as much as 25% post-consumer content.



Sustainability Transparency

Transparency and certified sustainability leadership come standard on Interface products, including published ingredients in HPDs (Health Product Declarations) and published EPDs (Environmental Product Declarations), which are based on full life cycle assessment (LCA). And, Interface carpet products are certified to the NSF 140 Sustainable Carpet Assessment Standard. Additionally, Interface flooring and recommended adhesives are 3rd party certified for low VOC emissions in compliance with California Department of Public Health (CDPH) Standard Method v1.2–2017. Carpet products made in our US facilities are made with 99% renewable energy.



Third Party Verification

The flooring products that we sell, including carpet tile, are carbon neutral across their full product life cycle through our third party verified Carbon Neutral Floors™ program. To find out more, visit interface.com/carbonneutral



Environmental Product Declaration (EPD) –

A statement of product ingredients and environmental impacts over the entire life cycle of a product. A comprehensive life cycle assessment (LCA) is performed to ISO standards to develop an EPD, after which both the EPD and LCA must be third party verified.



Sustainable Assessment for Carpet – The

only carpet sustainability standard in North America that evaluates the environmental impact of carpet for its entire lifecycle.



CRI Green Label Plus – An independent testing program that identifies carpet and adhesives with very low emissions of VOCs to help improve indoor air quality.



PLEASE RECYCLE

Printed on 50% post consumer waste (PCW) fiber manufactured using wind power.

We have tried our very best to accurately represent product colors. However, due to the nature of printed materials, color of actual products may vary slightly. Please request a sample to see actual product color.

All product specifications reflect averages derived from product sample testing, are subject to normal manufacturing and testing tolerances and inherent pattern variances, and may be changed without notice. For more information about these and other important attributes of the product(s) described herein, including recycled content and product warranty information, please see interface.com/disclaimer.

interface.com

United States Headquarters

1280 West Peachtree Street NW
Atlanta, GA 30309
1.800.634.6032

Canadian Headquarters

233 Lahr Drive
Belleville, ON K8N 5S2
1.800.267.2149 ext.52128

Brazilian Headquarters

Av. Das Nações Unidas 14261
25 andar, sala 25 -122, Brooklin Paulista
São Paulo SP 04578 - 000
Brasil
+ 5511.2196.0900

Latin American Headquarters

Montes Urales # 415 Piso 6
Lomas de Chapultepec
Miguel Hidalgo, CDMX
11000 Mexico
+ 52.55.2791.6812

CIM # IFS00673 09/2021



Climate change is undeniable. And reversible. Our mission is to prove it.
Join the #ClimateTakeBack and help create a climate fit for life.