

# Visual Code Collection

**Interface®**



AI, VR, robotics and smart everything. Hi-tech tools are sleek, enticing and fast, but they can be a distraction from creative thinking. Engagement with the natural world and real, “hi-touch” things like hand-crafted materials and goods, humanize experience, slow it down and restore imagination and wonder.

Visual Code is a collection of ten different patterns inspired by the symbiotic relationship of hi-tech and hi-touch, marrying images of glitch graphics and technicolor circuitry with simple textures that recall plain woven fabrics and rugs.

Based on simple textiles in shades of gray, Stitch Count™, Stitchery™ and Plain Stitch™ set the groundwork for the collection. In contrast, Hard Drive™ and Static Lines™ scramble colors, mimicking a monitor “glitch”. Bright, bold Circuit Board™ is at once precisely like wiring and vaguely like an ancient tribal motif. And finally, striking the balance are four black and white textures that recall handwoven rugs from another time and place.

Each style in Visual Code is made with 100% recycled content nylon, just one of the many steps we take toward creating a climate fit for life. Join the **#climatetakeback** movement.









Plain Stitch™ Colourline



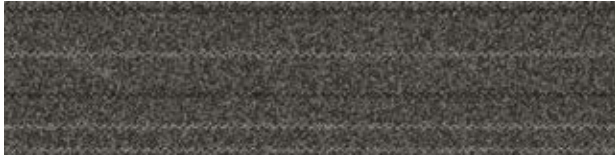
9278-001-000 NICKEL PLAIN



9278-002-000 IRON PLAIN



9278-003-000 GREY PLAIN



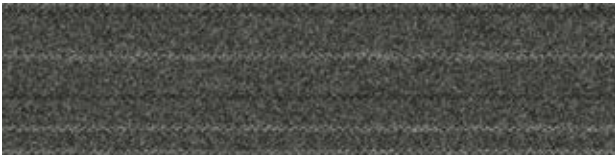
9278-004-000 GRAPHITE PLAIN



9278-005-000 FLINT PLAIN



9278-006-000 CHARCOAL PLAIN



9278-007-000 SLATE PLAIN



9278-008-000 BLACK PLAIN



PRODUCT PLAIN STITCH COLOURS FLINT PLAIN, CHARCOAL PLAIN INSTALLED ASHLAR





Stitchery™ Colourline



9281-001-000 NICKEL STITCHERY



9281-002-000 IRON STITCHERY



9281-003-000 GREY STITCHERY



9281-004-000 GRAPHITE STITCHERY



9281-005-000 FLINT STITCHERY



9281-006-000 CHARCOAL STITCHERY



9281-007-000 SLATE STITCHERY



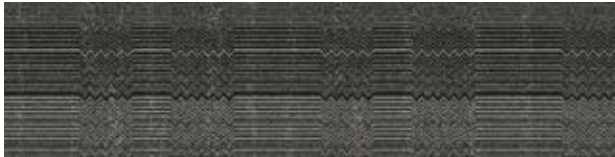
9281-008-000 BLACK STITCHERY



Stitch Count™ Colourline



9279-001-000 NICKEL COUNT



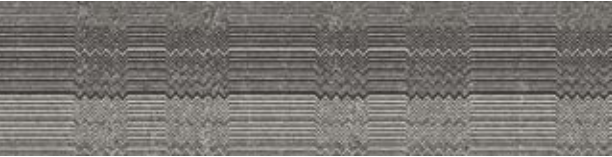
9279-002-000 IRON COUNT



9279-003-000 GREY COUNT



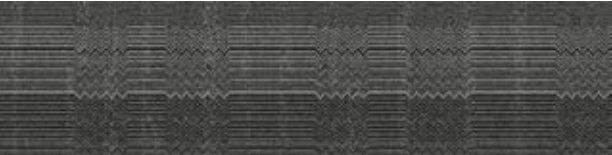
9279-004-000 GRAPHITE COUNT



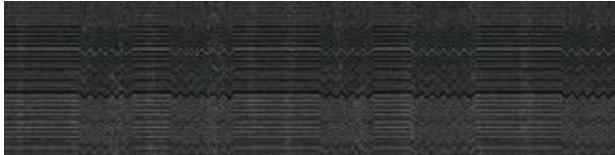
9279-005-000 FLINT COUNT



9279-006-000 CHARCOAL COUNT



9279-007-000 SLATE COUNT



9279-008-000 BLACK COUNT

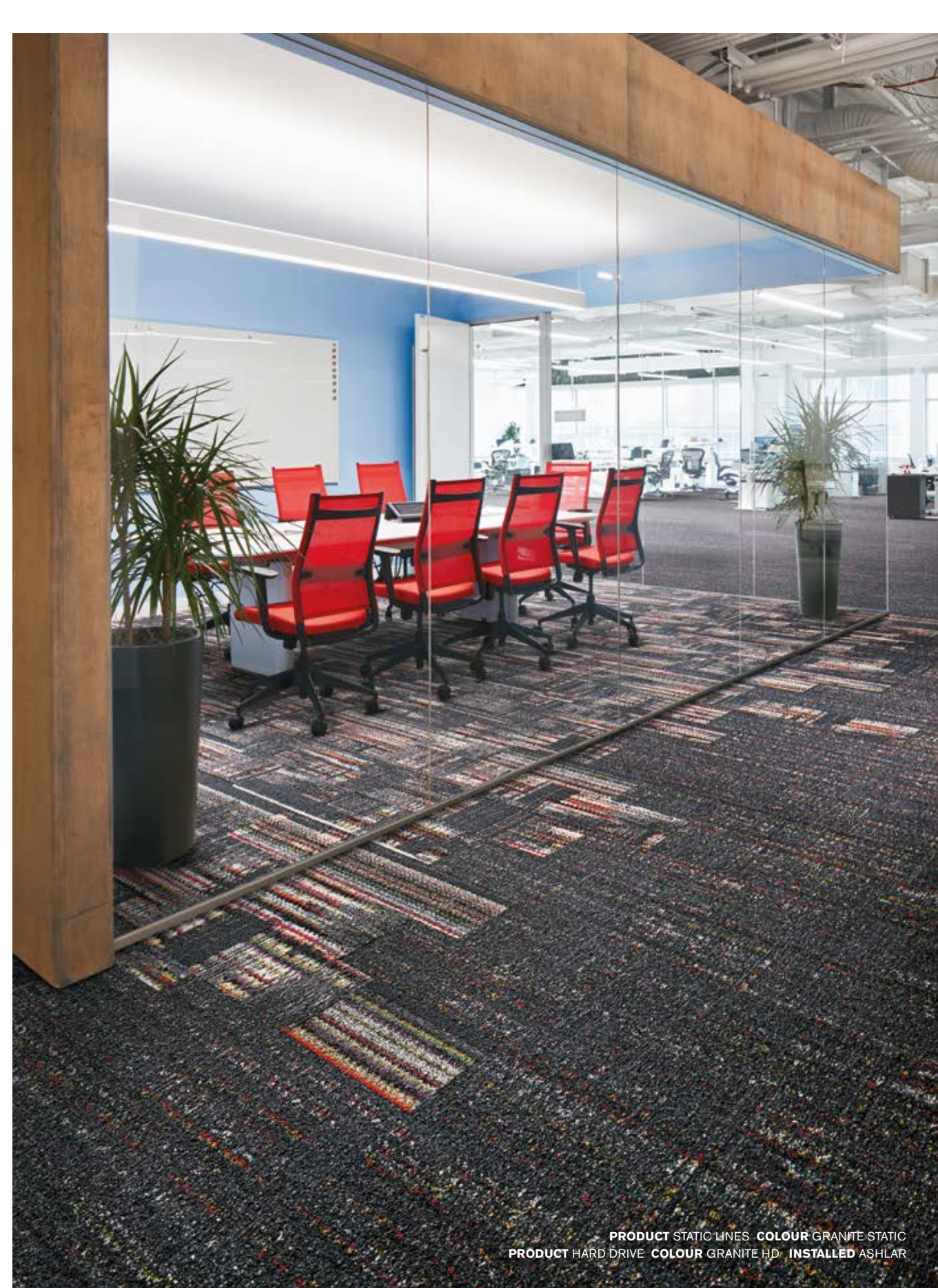






PRODUCT PLAIN STITCH COLOUR IRON PLAIN PRODUCT STITCHERY  
COLOUR NICKEL STITCHERY PRODUCT CIRCUIT BOARD COLOUR YELLOW CIRCUIT  
INSTALLED PATTERN BY TILE

[www.interface.com](http://www.interface.com)



PRODUCT STATIC LINES COLOUR GRANITE STATIC  
PRODUCT HARD DRIVE COLOUR GRANITE HD INSTALLED ASHLAR





Static Lines™ Colourline

---



9276-001-000 STEEL STATIC



9276-002-000 PEWTER STATIC



9276-003-000 LEAD STATIC



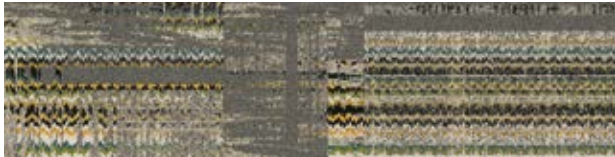
9276-004-000 GRANITE STATIC



Hard Drive™ Colourline



9277-001-000 STEEL HD



9277-002-000 PEWTER HD



9277-003-000 LEAD HD



9277-004-000 GRANITE HD

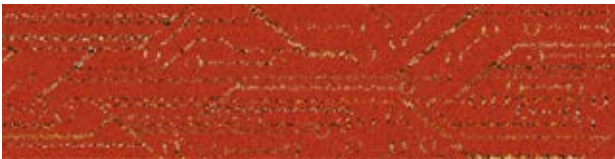


PRODUCT HARD DRIVE COLOUR PEWTER HD INSTALLED ASHLAR

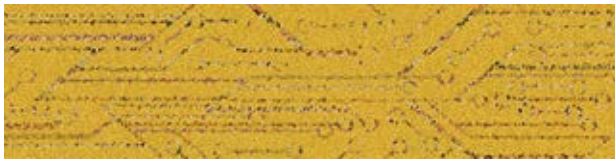




Circuit Board™ Colourline



9280-001-000 ORANGE CIRCUIT



9280-002-000 YELLOW CIRCUIT



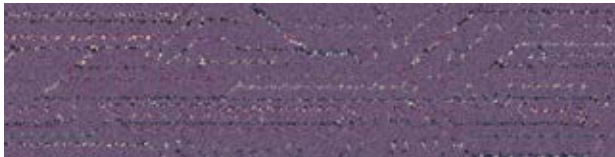
9280-003-000 GREEN CIRCUIT



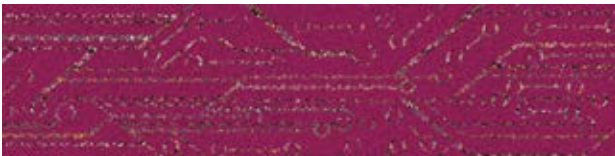
9280-004-000 TEAL CIRCUIT



9280-005-000 BLUE CIRCUIT



9280-006-000 PURPLE CIRCUIT



9280-007-000 MAGENTA CIRCUIT



9280-008-000 RED CIRCUIT







Darning™ Colourline



9273-001-000 B&W DARNING



PRODUCT DARNING COLOUR B&W DARNING INSTALLED ASHLAR





Haptic™ Colourline



9274-001-000 B&W HAPTIC



Overedge™ Colourline



9271-001-000 B&W OVEREDGE







Decibel™ Colourline



9275-001-000 B&W DECIBEL



Design Ideas Below are floor layouts showing how to create the design ideas shared in several of the images featured in this brochure.



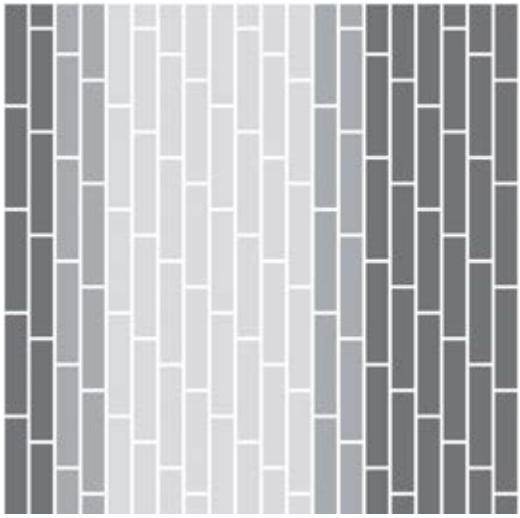
**PRODUCT** STATIC LINES **COLOUR** LEAD STATIC  
**PRODUCT** CIRCUIT BOARD **COLOUR** BLUE CIRCUIT  
**PRODUCT** HAPTIC **COLOUR** B&W HAPTIC **INSTALLED** PATTERN BY TILE (ASHLAR)



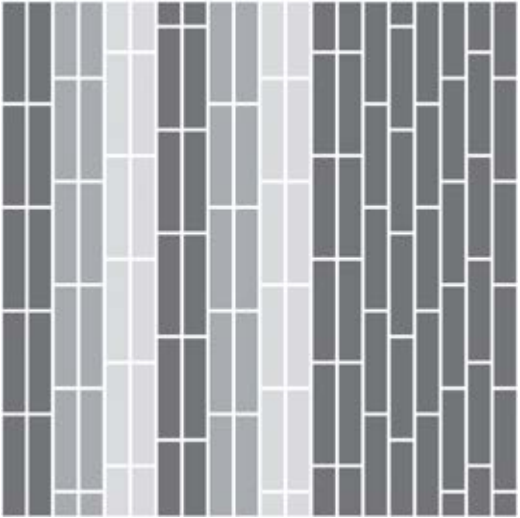
**PRODUCT** STATIC LINES **COLOUR** PEWTER STATIC **PRODUCT** HARD DRIVE **COLOUR** PEWTER HD **PRODUCT** CIRCUIT BOARD  
**COLOURS** ORANGE CIRCUIT, YELLOW CIRCUIT, GREEN CIRCUIT, TEAL CIRCUIT, BLUE CIRCUIT, PURPLE CIRCUIT, MAGENTA CIRCUIT, RED CIRCUIT  
**PRODUCT** DARNING **COLOUR** B&W DARNING **INSTALLED** PATTERN BY TILE (ASHLAR)



**PRODUCT** STITCH COUNT **COLOUR** GREY COUNT  
**PRODUCT** STITCHERY **COLOUR** GREY STITCHERY  
**PRODUCT** PLAIN STITCH **COLOUR** GREY PLAIN **INSTALLED** ASHLAR



**PRODUCT** STITCHERY **COLOUR** SLATE STITCHERY  
**PRODUCT** STATIC LINES **COLOUR** STEEL STATIC  
**PRODUCT** CIRCUIT BOARD **COLOUR** ORANGE CIRCUIT **INSTALLED** PATTERN BY TILE

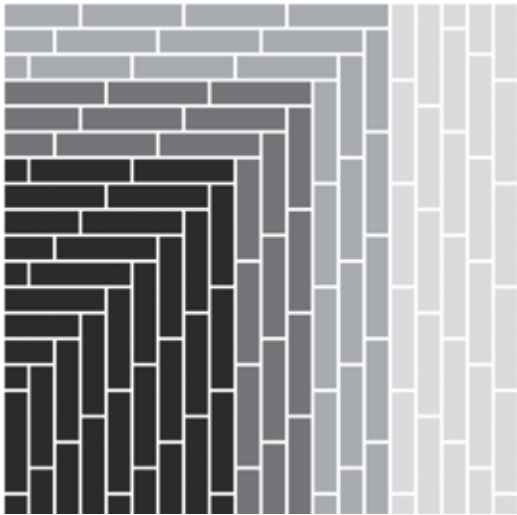




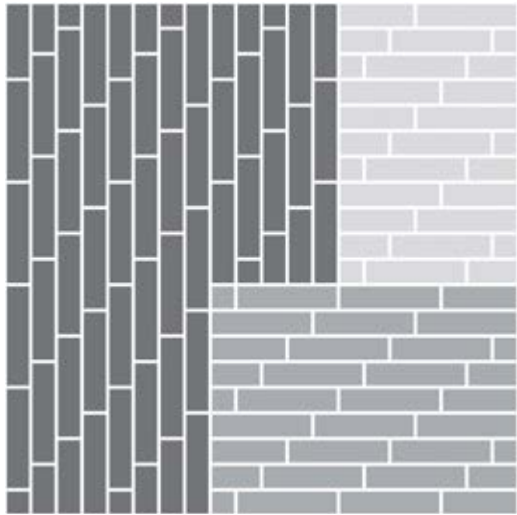
Design Ideas Below are floor layouts showing how to create the design ideas shared in several of the images featured in this brochure.



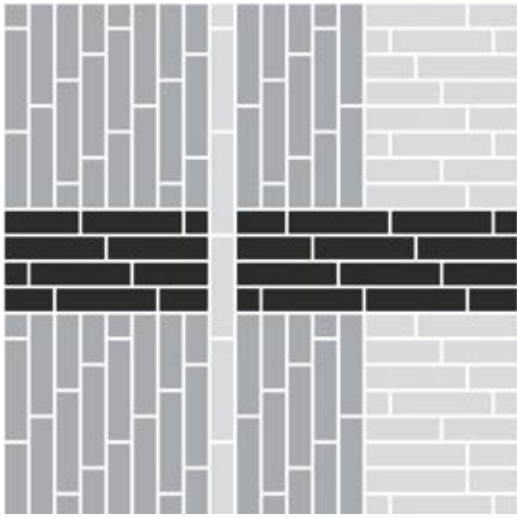
**PRODUCT** PLAIN STITCH **COLOUR** GRAPHITE PLAIN **PRODUCT** STITCHERY **COLOUR** GRAPHITE STITCHERY  
**PRODUCT** STITCH COUNT **COLOUR** GRAPHITE COUNT **PRODUCT** HAPTIC **COLOUR** B&W HAPTIC  
**INSTALLED** PATTERN BY TILE (ASHLAR)



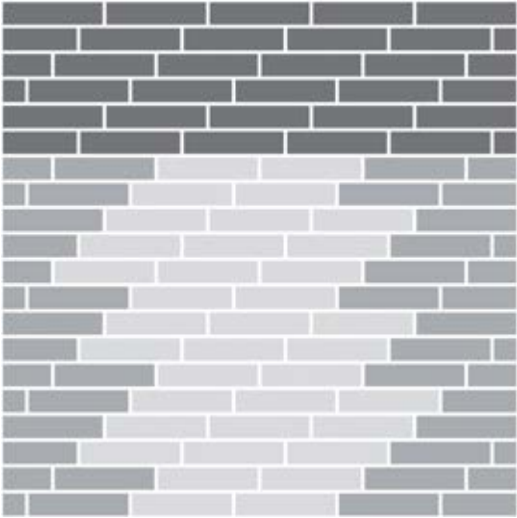
**PRODUCT** DARNING **COLOUR** B&W DARNING  
**PRODUCT** OVEREDGE **COLOUR** B&W OVEREDGE  
**PRODUCT** DECIBEL **COLOUR** B&W DECIBEL **INSTALLED** PATTERN BY TILE (ASHLAR)



**PRODUCT** PLAIN STITCH **COLOUR** IRON PLAIN  
**PRODUCT** STITCHERY **COLOUR** NICKEL STITCHERY  
**PRODUCT** CIRCUIT BOARD **COLOUR** YELLOW CIRCUIT **INSTALLED** PATTERN BY TILE (ASHLAR)



**CARPET PRODUCT** STATIC LINES **COLOUR** STEEL STATIC  
**CARPET PRODUCT** HARD DRIVE **COLOUR** STEEL HD  
**LVT PRODUCT** STUDIO SET™ **COLOUR** PEWTER **INSTALLED** PATTERN BY TILE (ASHLAR)





Specifications

Plain Stitch™

Style Code	9278 Pattern 000
Product Definition	Tufted Textured Loop
Yarn/Fibre	BCF Nylon Type 6 – 100% Recycled Content
Colour System	100% Solution Dyed
Machine Gauge	1/10
Pile Thickness	2.0mm +/- 0.5mm
Total Thickness	5.5mm +/- 0.5mm
Tile Size	25x100cm
Area of Use	Commercial – Heavy Use
Lifetime Antimicrobial	Intersept®
Soil/Stain Protection	Protekt²®
Total Recycled Content	GlasBac® 65% to 70% Total Recycled Content GlasBac®RE 80% to 85% Total Recycled Content
Installation Methods	Ashlar, Herringbone



Stitchery™

Style Code	9281 Pattern 000
Product Definition	Tufted Textured Loop
Yarn/Fibre	BCF Nylon Type 6 – 100% Recycled Content
Colour System	100% Solution Dyed
Machine Gauge	1/10
Pile Thickness	2.0mm +/- 0.5mm
Total Thickness	5.5mm +/- 0.5mm
Tile Size	25x100cm
Area of Use	Commercial – Heavy Use
Lifetime Antimicrobial	Intersept®
Soil/Stain Protection	Protekt²®
Total Recycled Content	GlasBac® 65% to 70% Total Recycled Content GlasBac®RE 80% to 85% Total Recycled Content
Installation Methods	Ashlar, Herringbone



Stitch Count™

Style Code	9279 Pattern 000
Product Definition	Tufted Textured Tip Sheared Loop
Yarn/Fibre	BCF Nylon Type 6 – 100% Recycled Content
Colour System	100% Solution Dyed
Machine Gauge	1/10
Pile Thickness	4.0mm +/- 0.5mm
Total Thickness	8.5mm +/- 0.5mm
Tile Size	25x100cm
Area of Use	Commercial – Heavy Use
Lifetime Antimicrobial	Intersept®
Soil/Stain Protection	Protekt²®
Total Recycled Content	GlasBac® 65% to 70% Total Recycled Content GlasBac®RE 80% to 85% Total Recycled Content
Installation Methods	Ashlar, Herringbone



Static Lines™

Style Code	9276 Pattern 000
Product Definition	Tufted Textured Loop
Yarn/Fibre	BCF Nylon Type 6 – 100% Recycled Content
Colour System	100% Solution Dyed
Machine Gauge	1/10
Pile Thickness	3.0mm +/- 0.5mm
Total Thickness	6.5mm +/- 0.5mm
Tile Size	25x100cm
Area of Use	Commercial – Heavy Use
Lifetime Antimicrobial	Intersept®
Soil/Stain Protection	Protekt²®
Total Recycled Content	GlasBac® 65% to 70% Total Recycled Content GlasBac®RE 80% to 85% Total Recycled Content
Installation Methods	Ashlar, Herringbone



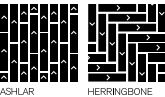
Hard Drive™ i2

Style Code	9277 Pattern 000
Product Definition	Tufted Textured Loop
Yarn/Fibre	BCF Nylon Type 6 – 100% Recycled Content
Colour System	100% Solution Dyed
Machine Gauge	1/10
Pile Thickness	3.5mm +/- 0.5mm
Total Thickness	7.0mm +/- 0.5mm
Tile Size	25x100cm
Area of Use	Commercial – Heavy Use
Lifetime Antimicrobial	Intersept®
Soil/Stain Protection	Protekt²®
Total Recycled Content	GlasBac® 65% to 70% Total Recycled Content GlasBac®RE 80% to 85% Total Recycled Content
Installation Methods	Ashlar, Herringbone



Circuit Board™

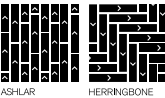
Style Code	9280 Pattern 000
Product Definition	Tufted Textured Loop
Yarn/Fibre	BCF Nylon Type 6 – 100% Recycled Content
Colour System	100% Solution Dyed
Machine Gauge	1/10
Pile Thickness	3.0mm +/- 0.5mm
Total Thickness	7.0mm +/- 0.5mm
Tile Size	25x100cm
Area of Use	Commercial – Heavy Use
Lifetime Antimicrobial	Intersept®
Soil/Stain Protection	Protekt²®
Total Recycled Content	GlasBac® 65% to 70% Total Recycled Content GlasBac®RE 80% to 85% Total Recycled Content
Installation Methods	Ashlar, Herringbone



Specifications

Darning™

Style Code	9273 Pattern 000
Product Definition	Tufted Textured Loop
Yarn/Fibre	BCF Nylon Type 6 – 100% Recycled Content
Colour System	100% Solution Dyed
Machine Gauge	1/10
Pile Thickness	3.0mm +/- 0.5mm
Total Thickness	6.5mm +/- 0.5mm
Tile Size	25x100cm
Area of Use	Commercial – Heavy Use
Lifetime Antimicrobial	Intersept®
Soil/Stain Protection	Protekt²®
Total Recycled Content	GlasBac® 65% to 70% Total Recycled Content GlasBac®RE 80% to 85% Total Recycled Content
Installation Methods	Ashlar, Herringbone



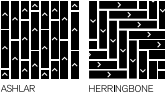
Haptic™

Style Code	9274 Pattern 000
Product Definition	Tufted Textured Loop
Yarn/Fibre	BCF Nylon Type 6 – 100% Recycled Content
Colour System	100% Solution Dyed
Machine Gauge	1/10
Pile Thickness	3.0mm +/- 0.5mm
Total Thickness	7.0mm +/- 0.5mm
Tile Size	25x100cm
Area of Use	Commercial – Heavy Use
Lifetime Antimicrobial	Intersept®
Soil/Stain Protection	Protekt²®
Total Recycled Content	GlasBac® 65% to 70% Total Recycled Content GlasBac®RE 80% to 85% Total Recycled Content
Installation Methods	Ashlar



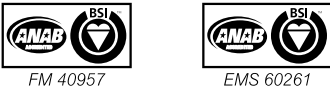
Overedge™

Style Code	9271 Pattern 000
Product Definition	Tufted Cut Pile
Yarn/Fibre	BCF Nylon Type 6 – 100% Recycled Content
Colour System	100% Solution Dyed
Machine Gauge	5/32
Pile Thickness	7.5mm +/- 0.5mm
Total Thickness	11.5mm +/- 0.5mm
Tile Size	25x100cm
Area of Use	Commercial – General Use
Lifetime Antimicrobial	Intersept®
Soil/Stain Protection	Protekt²®
Total Recycled Content	GlasBac® 65% to 70% Total Recycled Content GlasBac®RE 80% to 85% Total Recycled Content
Installation Methods	Ashlar, Herringbone



Decibel™

Style Code	9275 Pattern 000
Product Definition	Tufted Textured Loop
Yarn/Fibre	BCF Nylon Type 6 – 100% Recycled Content
Colour System	100% Solution Dyed
Machine Gauge	1/10
Pile Thickness	3.0mm +/- 0.5mm
Total Thickness	6.5mm +/- 0.5mm
Tile Size	25x100cm
Area of Use	Commercial – Heavy Use
Lifetime Antimicrobial	Intersept®
Soil/Stain Protection	Protekt²®
Total Recycled Content	GlasBac® 65% to 70% Total Recycled Content GlasBac®RE 80% to 85% Total Recycled Content
Installation Methods	Ashlar, Herringbone



CoolCarpet™ Intersept®

Production specifications are subject to normal manufacturing tolerances and may be changed without notice. Slight variation in colour among different production lots are normal and should be considered in the overall installation plan. Products covered by manufacturer's written warranty only. All other warranties, including without limitation any implied warranties of merchantability or fitness for particular purpose, are hereby disclaimed. Contact your representative for written warranty information. Recycled content calculations are based on historical averages by total weight of the product for backings. Yarn/Fibre recycled content calculation excludes backing. We update our recycled content information and other environmental data regularly to reflect changes and advancements in our technology.  
\*Cool Carpet is not a standard option in Australia and New Zealand.



As part of Interface's Mission Zero promise to eliminate any negative impact on the environment by 2020, we always consider the environment impact of every creative, manufacturing and building decision. This sample book is printed on recycled paper and with soy based ink. Twenty four virgin trees were saved from our use of 1725kg of recycled paper in the production of 5000 sample books. Energy intensity also decreased and greenhouse gases were reduced. The other reductions came from waste water and solid waste. Through our sample reclamation program, we help keep sample materials out of landfill by re-using them until it is time to recycle these sample materials.

**www.interface.com**

**South East Asia**

Interface Asia  
tel: 65-6478 1510  
www.interface.com

**South Korea**

tel: 82-2-555 1734  
www.interface.com

**Japan**

Interface Japan  
tel: 81-3-5733 5211  
www.interface.com

**India**

Interface India  
tel: 91 80 46131313  
www.interface.com

**Beijing Studio**

Interface China  
tel: 86-10-6590 7810  
www.interface.com.cn

**Hongkong Studio**

Interface China  
tel: 852-2802 0838  
www.interface.com.cn

**Shanghai Studio**

Interface China  
tel: 86-21-6340 3868  
www.interface.com.cn

**Australia**

Interface Australia  
local toll free: 1800 008 101  
www.interface.com

05/2018  
SF0109T0



Climate change is undeniable. And reversible. Our mission is to prove it.  
**Join the #ClimateTakeBack and help create a climate fit for life.**