



**WHAT
INSPIRES
US**

Interface®

VISUAL CODE/ DRAWN LINES COLLECTIONS

Table of Contents

Visual Code™ Collection and Drawn Lines™ are inspired by the symbiotic relationship of hi-tech and hi-touch. Images of glitch graphics, technicolour circuitry and prismatic geometry are married with simple textures that recall plain woven textiles. Harmonizing ideas about craft and industry in hard and soft materials that fit together seamlessly. Now that's a lot to be positive about.

+Positive spaces™

Better products. Happier people. Healthier planet.

1	pgs. 04-11 Black & White
2	pgs. 12-19 Circuit Board
3	pgs. 20-27 Static Lines/Hard Drive
4	pgs. 28-35 Plain Stitch Stitchery Stitch Count
5	pgs. 36-43 Drawn Lines LVT

Black & White





06

+Positive spaces
**Better products.
 Happier people.
 Healthier planet.**

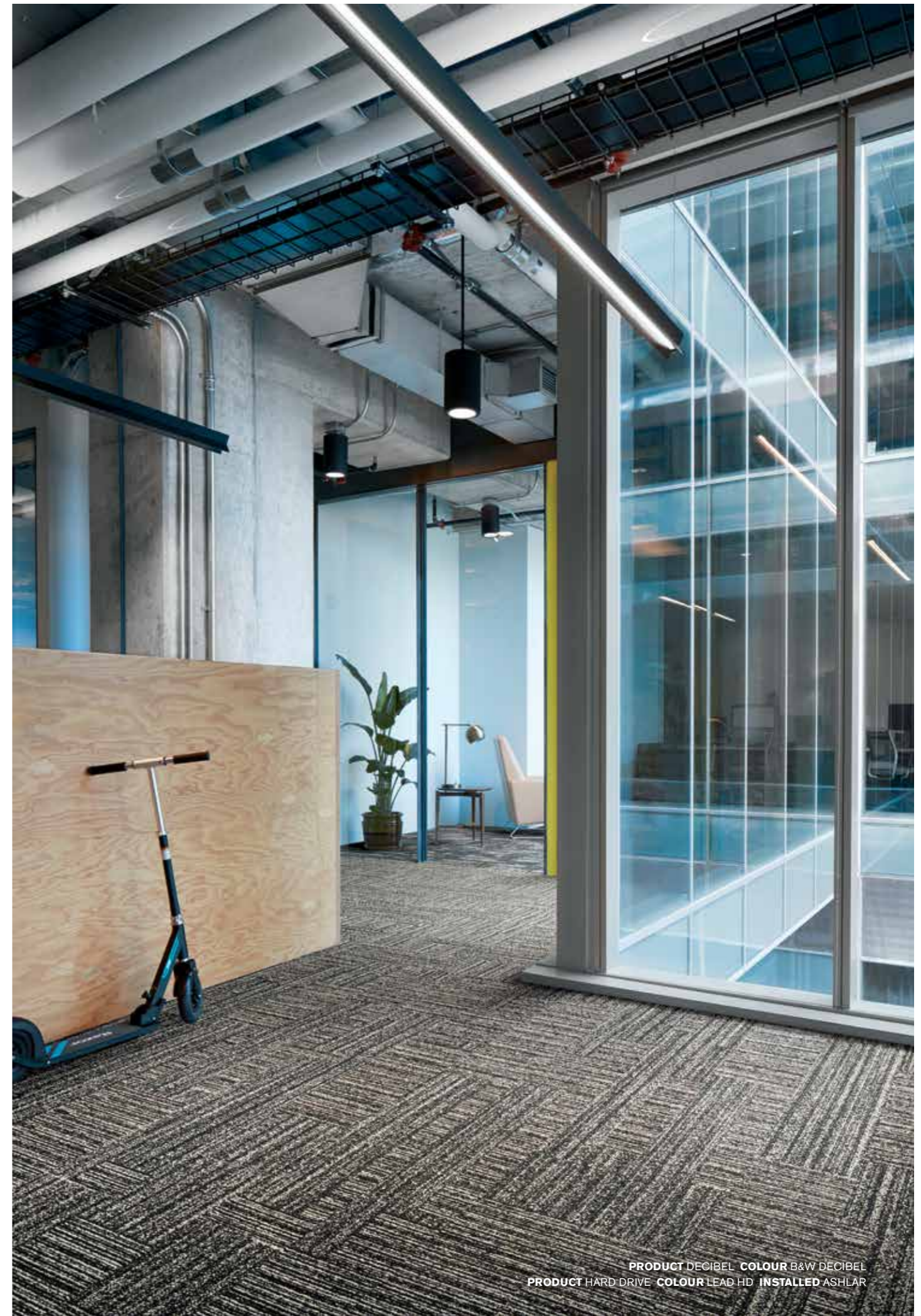
PRODUCT DARNING COLOUR B&W DARNING
 PRODUCT STITCHERY COLOUR BLACK STITCHERY INSTALLED PATTERN BY TILE



07



08



09

PRODUCT DECIBEL COLOUR B&W DECIBEL
 PRODUCT HARD DRIVE COLOUR LEAD HD INSTALLED ASHLAR

Black & White



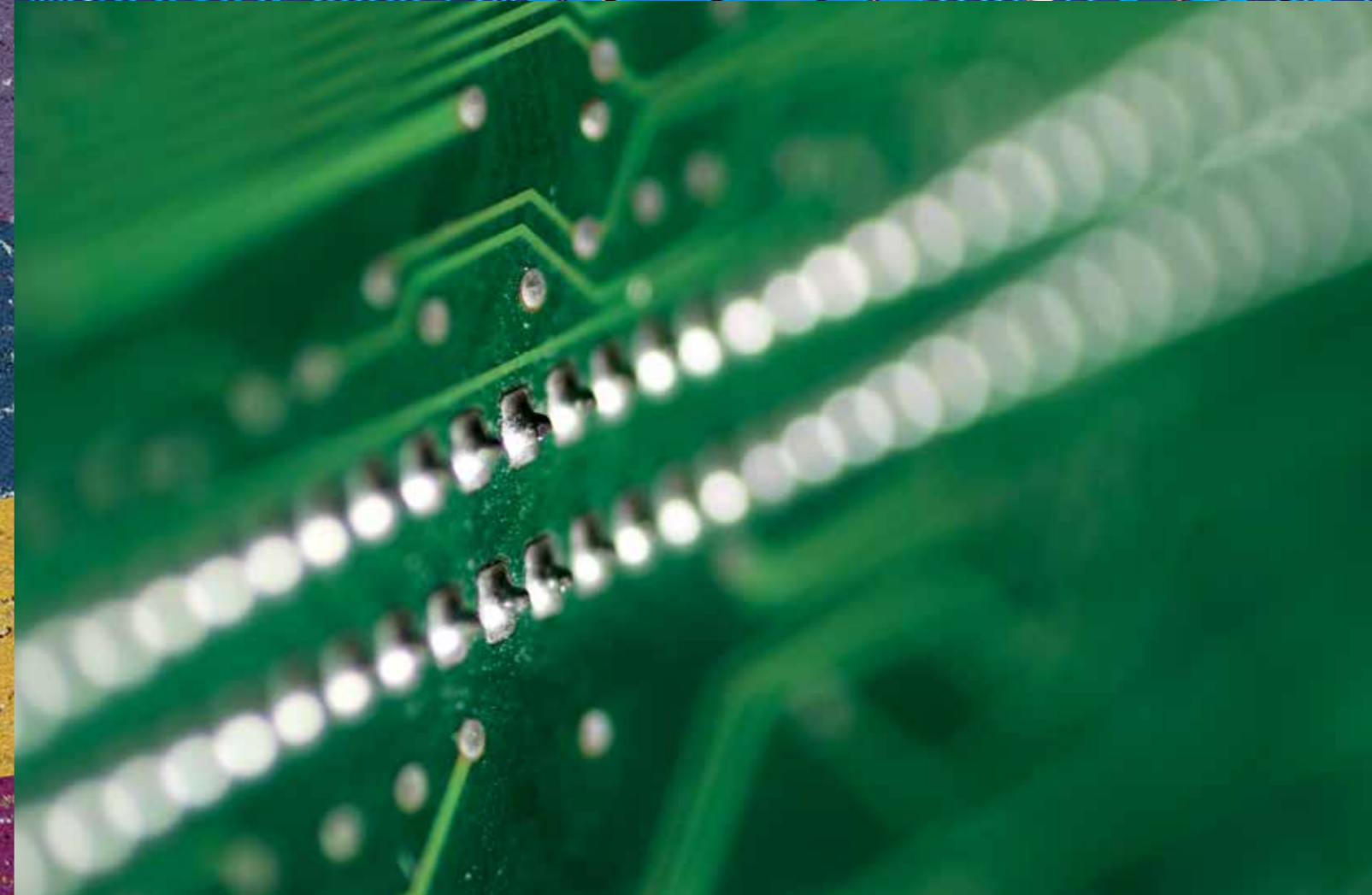
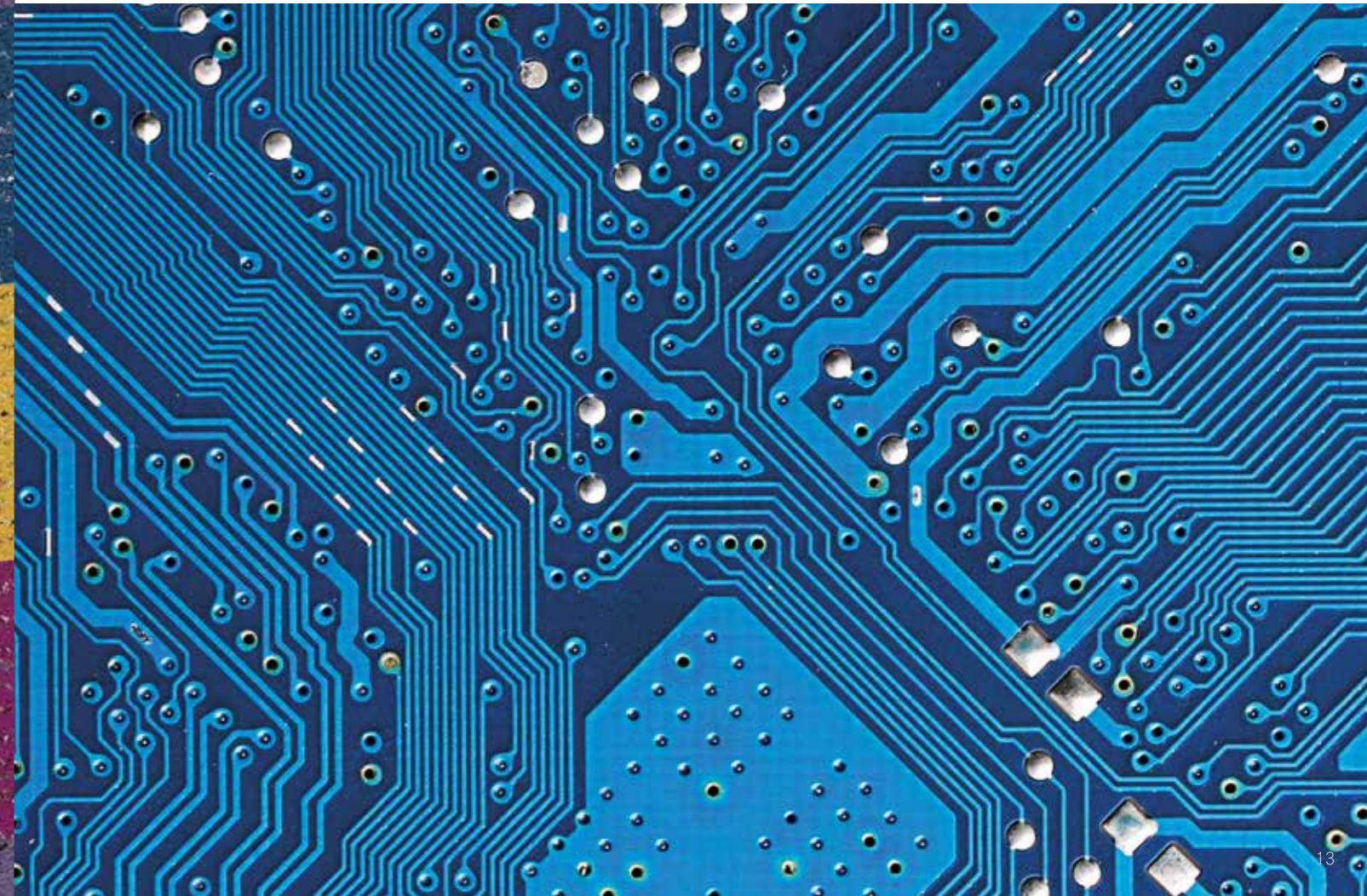
9274-001-000 B&W HAPTIC

9275-001-000 B&W DECIBEL

9273-001-000 B&W DARNING

9271-001-000 B&W OVEREDGE

Circuit Board





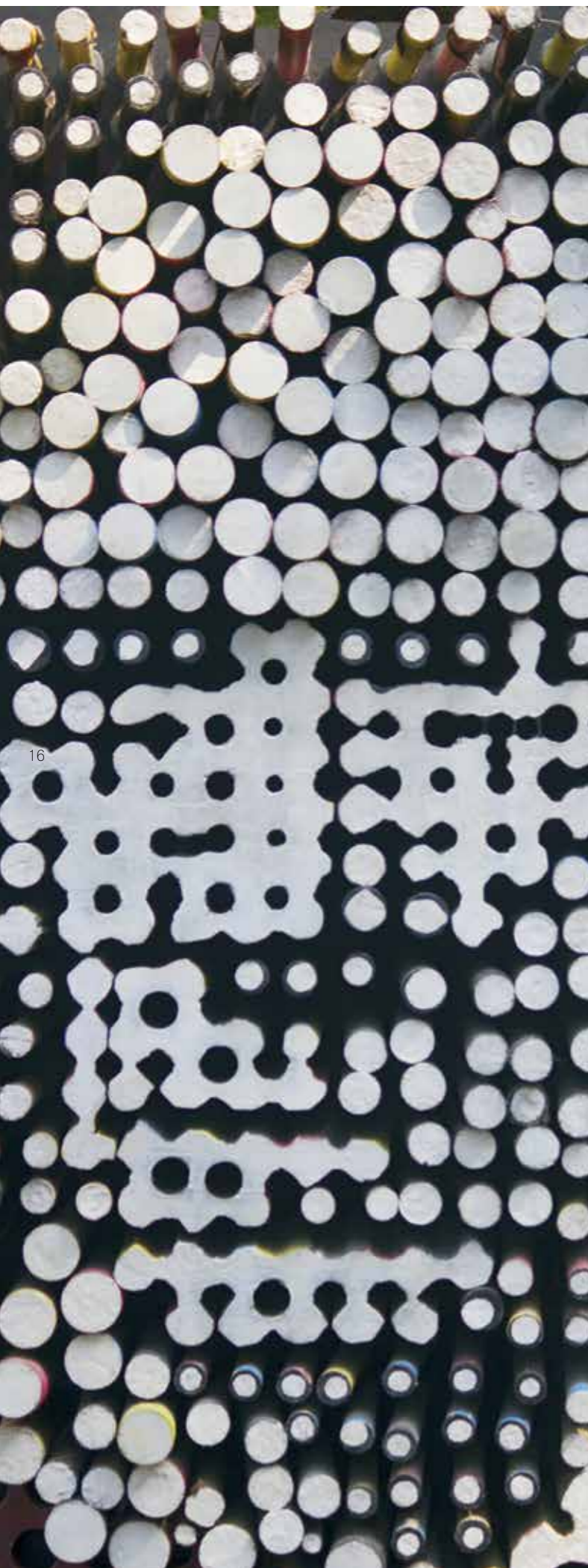
14

15

+Positive spaces

**Better products.
Happier people.
Healthier planet.**

PRODUCT CIRCUIT BOARD COLOURS BLUE CIRCUIT, TEAL CIRCUIT
 PRODUCT STATIC LINES COLOUR LEAD STATIC INSTALLED PATTERN BY TILE (ASHLAR)



16



17

PRODUCT CIRCUIT BOARD COLOURS YELLOW CIRCUIT, RED CIRCUIT, ORANGE CIRCUIT
 PRODUCT PLAIN STITCH COLOUR IRON PLAIN INSTALLED PATTERN BY TILE (ASHLAR)



PRODUCT STATIC LINES COLOUR LEAD STATIC PRODUCT CIRCUIT BOARD COLOUR BLUE CIRCUIT
 PRODUCT HAPTIC COLOUR B&W HAPTIC INSTALLED PATTERN BY TILE (ASHLAR)



CARPET PRODUCT CIRCUIT BOARD COLOUR MAGENTA CIRCUIT
 LVT PRODUCT DRAWN LINES COLOUR SILVER INSTALLED ASHLAR

Circuit Board

9280-005-000 BLUE CIRCUIT —

9280-003-000 GREEN CIRCUIT —

9280-007-000 MAGENTA CIRCUIT —

9280-001-000 ORANGE CIRCUIT —

9280-006-000 PURPLE CIRCUIT —

9280-008-000 RED CIRCUIT —

9280-004-000 TEAL CIRCUIT —

9280-002-000 YELLOW CIRCUIT —

Static Lines/Hard Drive

RS





22

+Positive spaces
**Better products.
 Happier people.
 Healthier planet.**

PRODUCT HARD DRIVE COLOUR STEEL HD
 PRODUCT STATIC LINES COLOUR STEEL STATIC INSTALLED PATTERN BY TILE (ASHLAR)



23



24



25

CARPET PRODUCT HARD DRIVE COLOUR GRANITE HD
 LVT PRODUCT DRAWN LINES COLOUR AQUAMARINE INSTALLED ASHLAR



PRODUCT HARD DRIVE COLOUR PEWTER HD PRODUCT STATIC LINES COLOUR PEWTER STATIC
 PRODUCT PLAIN STITCH COLOUR NICKEL PLAIN INSTALLED PATTERN BY TILE (ASHLAR)



PRODUCT STITCHERY COLOUR FLINT STITCHERY PRODUCT HARD DRIVE COLOUR PEWTER HD
 PRODUCT CIRCUIT BOARD COLOUR GREEN CIRCUIT INSTALLED PATTERN BY TILE (ASHLAR)

Static Lines/Hard Drive

9276-004-000 GRANITE STATIC —

9276-003-000 LEAD STATIC —

9276-002-000 PEWTER STATIC —

9276-001-000 STEEL STATIC —

9277-004-000 GRANITE HD —

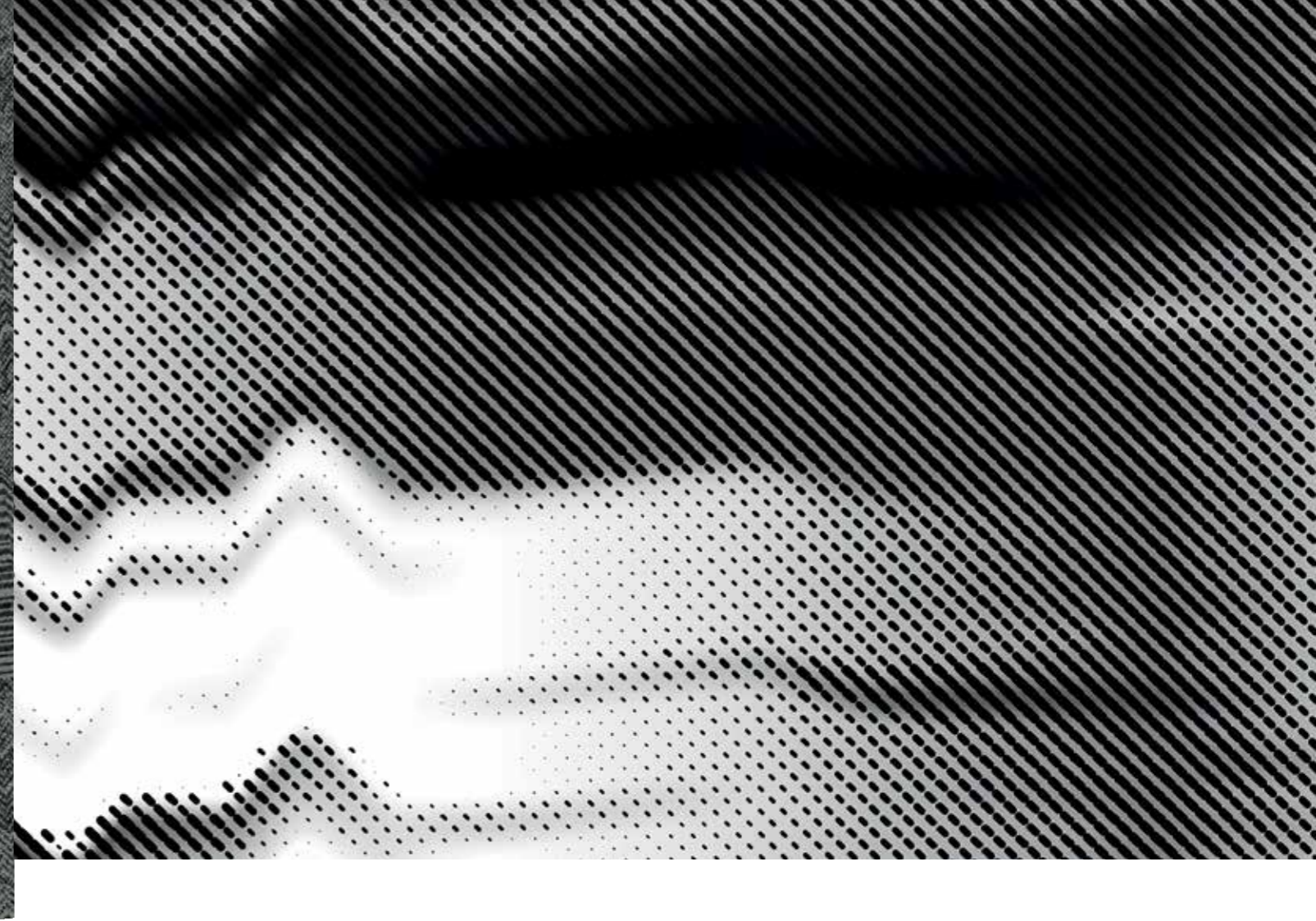
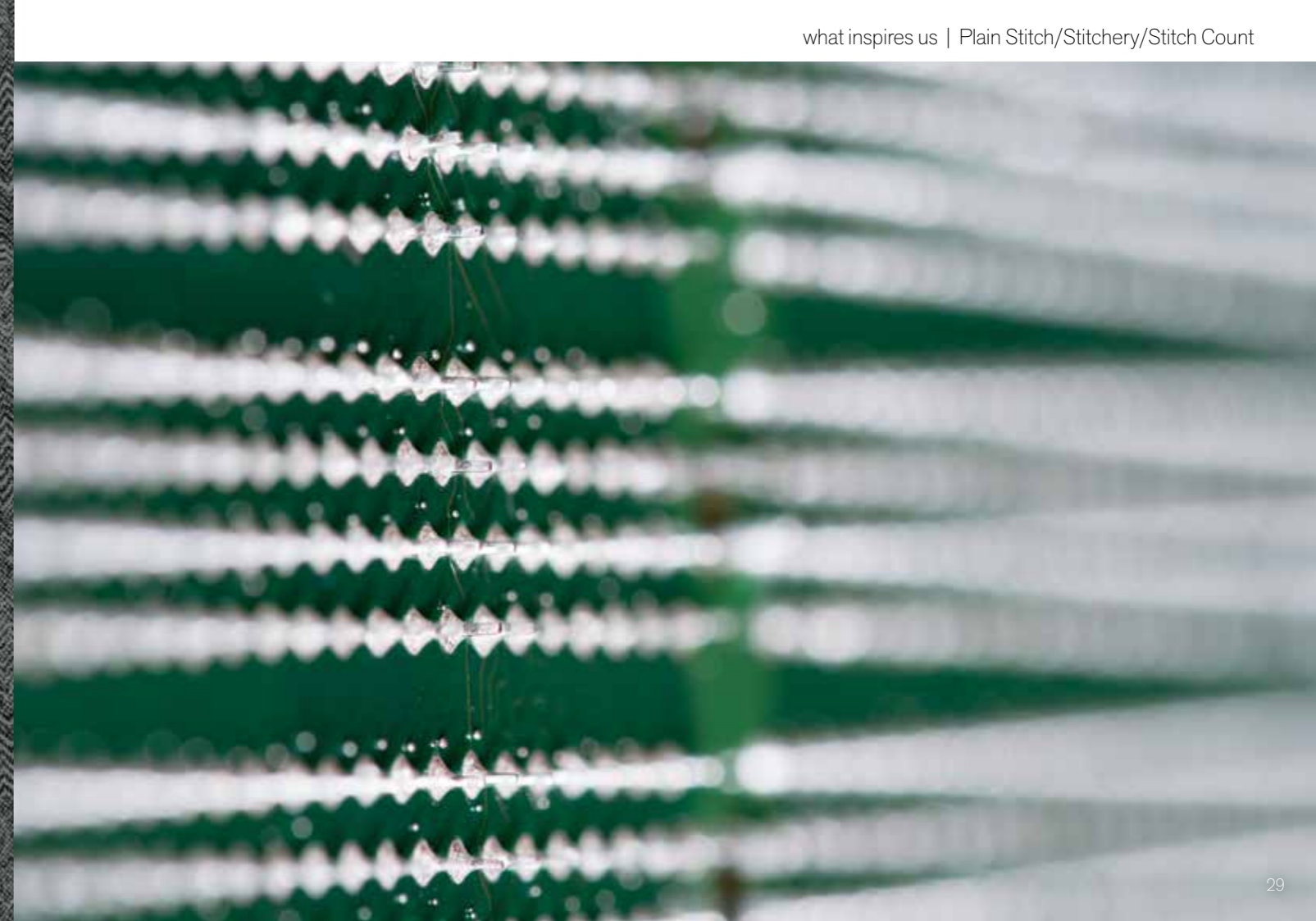
9277-003-000 LEAD HD —

9277-002-000 PEWTER HD —

9277-001-000 STEEL HD —

Plain Stitch/Stitchery/Stitch Count

4





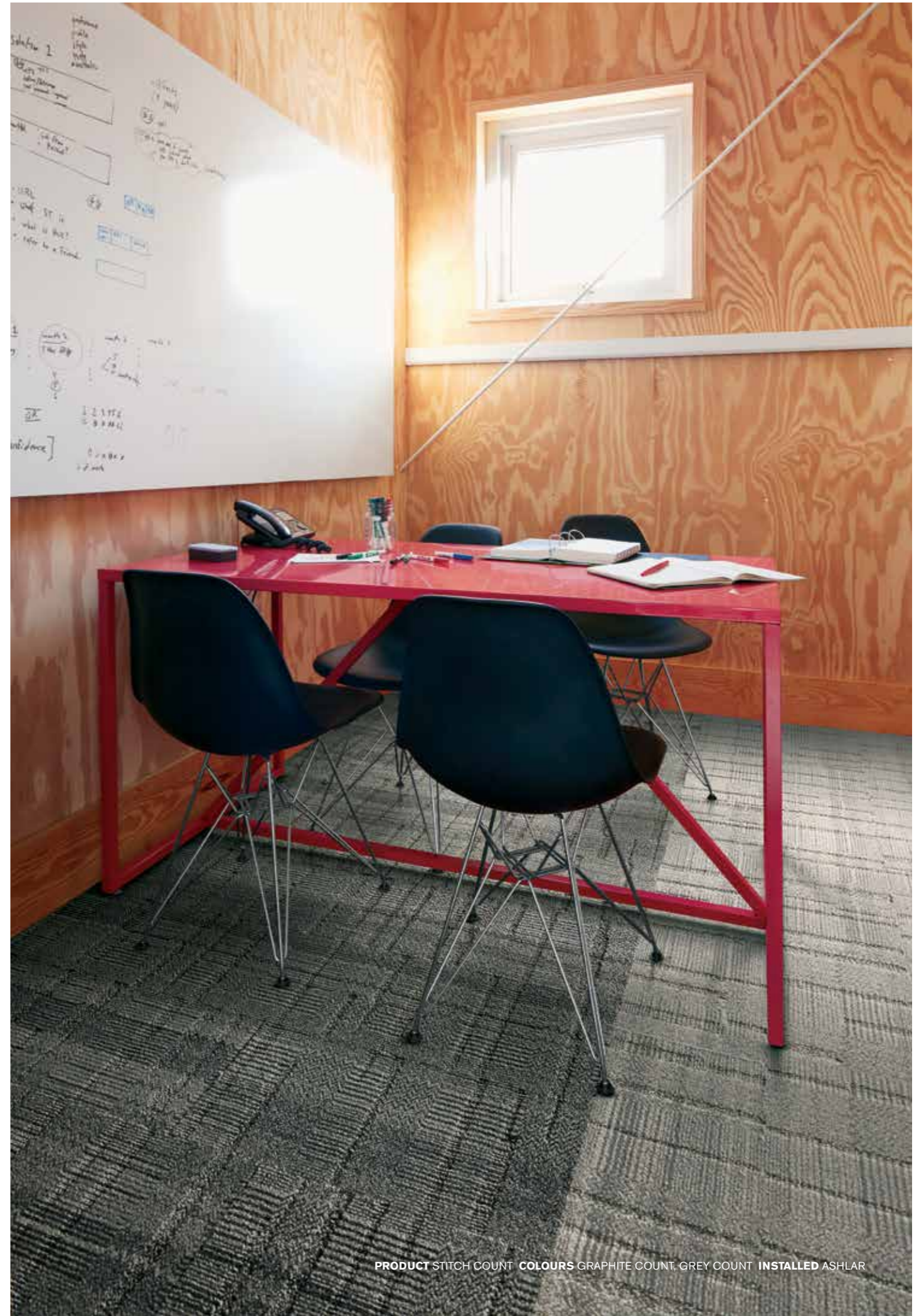
30

+Positive spaces
**Better products.
 Happier people.
 Healthier planet.**

PRODUCT STITCHERY COLOUR NICKEL STITCHERY
 PRODUCT STITCH COUNT COLOUR SLATE COUNT INSTALLED ASHLAR



31



PRODUCT STITCH COUNT COLOURS GRAPHITE COUNT, GREY COUNT INSTALLED ASHLAR



CARPET PRODUCT PLAIN STITCH COLOUR NICKEL PLAIN
CARPET PRODUCT STITCHERY COLOUR GREY STITCHERY INSTALLED HERRINGBONE
LVT PRODUCT DRAWN LINES COLOUR TOPAZ INSTALLED ASHLAR



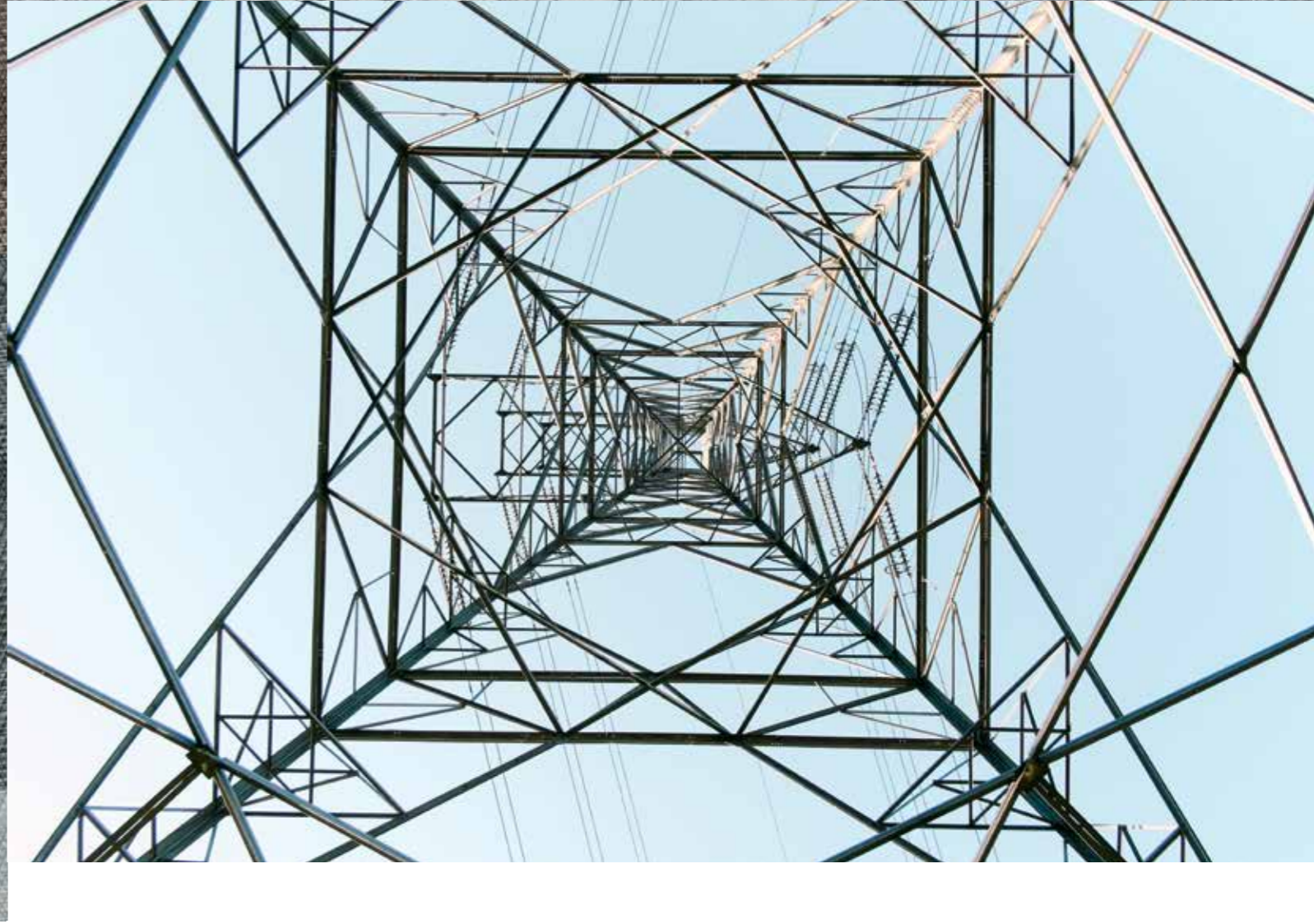
PRODUCT STITCHERY COLOUR SLATE STITCHERY PRODUCT STATIC LINES COLOUR STEEL STATIC
PRODUCT CIRCUIT BOARD COLOUR ORANGE CIRCUIT INSTALLED PATTERN BY TILE (ASHLAR)

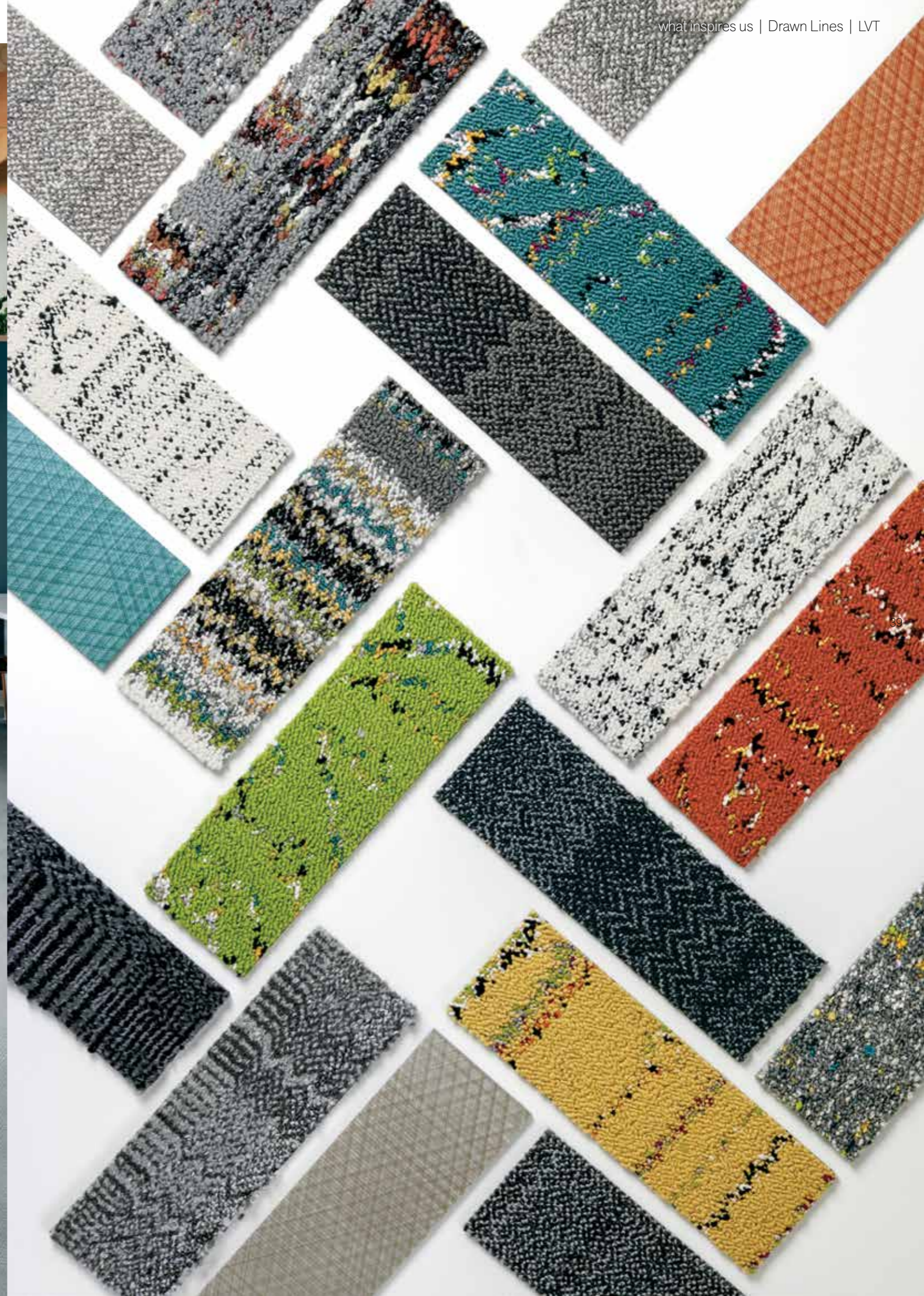
Plain Stitch/Stitchery/Stitch Count

- 9278-008-000 BLACK PLAIN —
- 9278-006-000 CHARCOAL PLAIN —
- 9278-005-000 FLINT PLAIN —
- 9278-004-000 GRAPHITE PLAIN —
- 9278-003-000 GREY PLAIN —
- 9278-002-000 IRON PLAIN —
- 9278-001-000 NICKEL PLAIN —
- 9278-007-000 SLATE PLAIN —
- 9281-008-000 BLACK STITCHERY —
- 9281-006-000 CHARCOAL STITCHERY —
- 9281-005-000 FLINT STITCHERY —
- 9281-004-000 GRAPHITE STITCHERY —
- 9281-003-000 GREY STITCHERY —
- 9281-002-000 IRON STITCHERY —
- 9281-001-000 NICKEL STITCHERY —
- 9281-007-000 SLATE STITCHERY —
- 9279-008-000 BLACK COUNT —
- 9279-006-000 CHARCOAL COUNT —
- 9279-005-000 FLINT COUNT —
- 9279-004-000 GRAPHITE COUNT —
- 9279-003-000 GREY COUNT —
- 9279-002-000 IRON COUNT —
- 9279-001-000 NICKEL COUNT —
- 9279-007-000 SLATE COUNT —

Drawn Lines | LVT

5





+Positive spaces
**Better products.
 Happier people.
 Healthier planet.**

PRODUCT DRAWN LINES COLOURS SMOKEY QUARTZ, DIAMOND INSTALLED ASHLAR



PRODUCT DRAWN LINES COLOURS AQUAMARINE, ONYX INSTALLED ASHLAR



PRODUCT DRAWN LINES COLOUR AMBER INSTALLED ASHLAR



LVT PRODUCT DRAWN LINES COLOUR TOPAZ
CARPET PRODUCT HARD DRIVE COLOUR PEWTER HD INSTALLED ASHLAR

Drawn Lines | LVT

what inspires us | Drawn Lines | LVT

- A009-09 DIAMOND —
- A009-07 ONYX —
- A009-08 SILVER —
- A009-03 BRONZE —
- A009-02 TOPAZ —
- A009-10 OPAL —
- A009-05 AMBER —
- A009-06 AQUAMARINE —
- A009-04 SMOKEY QUARTZ —
- A009-11 AMETHYST —

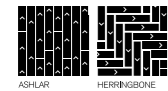
1 Black & White

pgs. 04 - 11

Darning™ Colourline



Style Code	9273 Pattern 000
Product Definition	Tufted Textured Loop
Yarn/Fibre	BCF Nylon Type 6 – 100% Recycled Content
Colour System	100% Solution Dyed
Machine Gauge	1/10
Pile Thickness	3.0mm +/- 0.5mm
Total Thickness	6.5mm +/- 0.5mm
Tile Size	25x100cm
Area of Use	Commercial – Heavy Use
Lifetime Antimicrobial	Intersept®
Soil/Stain Protection	Protekt2®
Total Recycled Content	GlasBac® 65% to 70% Total Recycled Content GlasBac®RE 80% to 85% Total Recycled Content
Installation Methods	Ashlar, Herringbone



Haptic™ Colourline



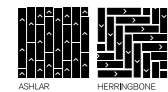
Style Code	9274 Pattern 000
Product Definition	Tufted Textured Loop
Yarn/Fibre	BCF Nylon Type 6 – 100% Recycled Content
Colour System	100% Solution Dyed
Machine Gauge	1/10
Pile Thickness	3.0mm +/- 0.5mm
Total Thickness	7.0mm +/- 0.5mm
Tile Size	25x100cm
Area of Use	Commercial – Heavy Use
Lifetime Antimicrobial	Intersept®
Soil/Stain Protection	Protekt2®
Total Recycled Content	GlasBac® 65% to 70% Total Recycled Content GlasBac®RE 80% to 85% Total Recycled Content
Installation Methods	Ashlar



Overedge™ Colourline



Style Code	9271 Pattern 000
Product Definition	Tufted Cut Pile
Yarn/Fibre	BCF Nylon Type 6 – 100% Recycled Content
Colour System	100% Solution Dyed
Machine Gauge	5/32
Pile Thickness	7.5mm +/- 0.5mm
Total Thickness	11.5mm +/- 0.5mm
Tile Size	25x100cm
Area of Use	Commercial – General Use
Lifetime Antimicrobial	Intersept®
Soil/Stain Protection	Protekt2®
Total Recycled Content	GlasBac® 65% to 70% Total Recycled Content GlasBac®RE 80% to 85% Total Recycled Content
Installation Methods	Ashlar, Herringbone



Decibel™ Colorline



Style Code	9275 Pattern 000
Product Definition	Tufted Textured Loop
Yarn/Fibre	BCF Nylon Type 6 – 100% Recycled Content
Colour System	100% Solution Dyed
Machine Gauge	1/10
Pile Thickness	3.0mm +/- 0.5mm
Total Thickness	6.5mm +/- 0.5mm
Tile Size	25x100cm
Area of Use	Commercial – Heavy Use
Lifetime Antimicrobial	Intersept®
Soil/Stain Protection	Protekt2®
Total Recycled Content	GlasBac® 65% to 70% Total Recycled Content GlasBac®RE 80% to 85% Total Recycled Content
Installation Methods	Ashlar, Herringbone



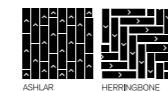
2 Circuit Board

pgs. 12 - 19

Circuit Board™



Style Code	9280 Pattern 000
Product Definition	Tufted Textured Loop
Yarn/Fibre	BCF Nylon Type 6 – 100% Recycled Content
Colour System	100% Solution Dyed
Machine Gauge	1/10
Pile Thickness	3.0mm +/- 0.5mm
Total Thickness	7.0mm +/- 0.5mm
Tile Size	25x100cm
Area of Use	Commercial – Heavy Use
Lifetime Antimicrobial	Intersept®
Soil/Stain Protection	Protekt2®
Total Recycled Content	GlasBac® 65% to 70% Total Recycled Content GlasBac®RE 80% to 85% Total Recycled Content
Installation Methods	Ashlar, Herringbone



3 Static Lines/Hard Drive

pgs. 20 - 27

Static Lines™



Style Code	9276 Pattern 000
Product Definition	Tufted Textured Loop
Yarn/Fibre	BCF Nylon Type 6 – 100% Recycled Content
Colour System	100% Solution Dyed
Machine Gauge	1/10
Pile Thickness	3.0mm +/- 0.5mm
Total Thickness	6.5mm +/- 0.5mm
Tile Size	25x100cm
Area of Use	Commercial – Heavy Use
Lifetime Antimicrobial	Intersept®
Soil/Stain Protection	Protekt2®
Total Recycled Content	GlasBac® 65% to 70% Total Recycled Content GlasBac®RE 80% to 85% Total Recycled Content
Installation Methods	Ashlar, Herringbone



Hard Drive™ i2



Style Code	9277 Pattern 000
Product Definition	Tufted Textured Loop
Yarn/Fibre	BCF Nylon Type 6 – 100% Recycled Content
Colour System	100% Solution Dyed
Machine Gauge	1/10
Pile Thickness	3.5mm +/- 0.5mm
Total Thickness	7.0mm +/- 0.5mm
Tile Size	25x100cm
Area of Use	Commercial – Heavy Use
Lifetime Antimicrobial	Intersept®
Soil/Stain Protection	Protekt2®
Total Recycled Content	GlasBac® 65% to 70% Total Recycled Content GlasBac®RE 80% to 85% Total Recycled Content
Installation Methods	Ashlar, Herringbone



4 Plain Stitch/ Stitchery/ Stitch Count

pgs. 28 - 35

Plain Stitch™



Style Code	9278 Pattern 000
Product Definition	Tufted Textured Loop
Yarn/Fibre	BCF Nylon Type 6 – 100% Recycled Content
Colour System	100% Solution Dyed
Machine Gauge	1/10
Pile Thickness	2.0mm +/- 0.5mm
Total Thickness	5.5mm +/- 0.5mm
Tile Size	25x100cm
Area of Use	Commercial – Heavy Use
Lifetime Antimicrobial	Intersept®
Soil/Stain Protection	Protekt2®
Total Recycled Content	GlasBac® 65% to 70% Total Recycled Content GlasBac®RE 80% to 85% Total Recycled Content
Installation Methods	Ashlar, Herringbone



Stitchery™



Style Code	9281 Pattern 000
Product Definition	Tufted Textured Loop
Yarn/Fibre	BCF Nylon Type 6 – 100% Recycled Content
Colour System	100% Solution Dyed
Machine Gauge	1/10
Pile Thickness	2.0mm +/- 0.5mm
Total Thickness	5.5mm +/- 0.5mm
Tile Size	25x100cm
Area of Use	Commercial – Heavy Use
Lifetime Antimicrobial	Intersept®
Soil/Stain Protection	Protekt2®
Total Recycled Content	GlasBac® 65% to 70% Total Recycled Content GlasBac®RE 80% to 85% Total Recycled Content
Installation Methods	Ashlar, Herringbone



Stitch Count™



Style Code	9279 Pattern 000
Product Definition	Tufted Textured Tip Sheared Loop
Yarn/Fibre	BCF Nylon Type 6 – 100% Recycled Content
Colour System	100% Solution Dyed
Machine Gauge	1/10
Pile Thickness	4.0mm +/- 0.5mm
Total Thickness	8.5mm +/- 0.5mm
Tile Size	25x100cm
Area of Use	Commercial – Heavy Use
Lifetime Antimicrobial	Intersept®
Soil/Stain Protection	Protekt2®
Total Recycled Content	GlasBac® 65% to 70% Total Recycled Content GlasBac®RE 80% to 85% Total Recycled Content
Installation Methods	Ashlar, Herringbone



5 Drawn Lines | LVT

pgs. 36 - 43



Drawn Lines™

Product Number	A009
Product Construction	High Performance Luxury Vinyl Plank
Wear Layer Thickness	0.55 mm
Total Thickness (Metric)	4.5 mm
Classification	EN 651 Class 33 (heavy contract) EN 651 Class 42 (light industrial general)
Acoustic Impact Noise Reduction	ISO 140.8 ΔL _w = 16dB
Finish	CERAMOR(tm) UV Stabilized Ceramic Bead Coating
Nominal Dimensions	25cm x 100cm

Performance Specifications

Critical Heat Flux	AS ISO 9239-1	>7kW/m ²
Smoke Rate	AS ISO 9239-1	<750%min
Size, Tolerance	ISO 24342	>400 mm < 0.35 mm
	ISO 24342	<400 mm < 0.25 mm
Dimensional Stability	ISO 23999	<0.25%
Thickness	ISO 24346	Average value + 0.20mm
Resistance to Light	ISO 105-B02	≥6
Resistance to Heat	ASTM F1514	ΔE< 8 avg Max
Resistance to Chemicals	EN-ISO 26987	Pass
Reaction to Fire	EN ISO 13501-1	Class BFI-S1
VOC Test	ISO 10580	Pass
Flexibility	ISO 24344	Method A Pass
Static Load	ASTM F970	≤0.005" with 1500 psi
Castor chair	ISO 4918	Pass
Thermal Conductivity	EN 12667	0.16 W/mK
Static Electrical	EN 1815	<2kV
Slip Resistance	AS 4586:2014	R10

Environmental Specifications

Ingredients and Life	EPD for LVT
Cycle Impacts	
Sustainability Assessment	NSF/ANSI 332, Meets Certification Guidelines
LEED v4	Contributes to IEQ: Low Emitting Materials; M&R: EPD and EPR
End of Life	Fully Recyclable to carpet tile Backing Recycling

Technical Information

Installation	See Interface LVT Installation Guidelines online
Maintenance	See Interface LVT Maintenance Guidelines online
Reclamation	View details on our ReEntry® Program
Warranty	15 Year Standard LVT Product Warranty
Installation Methods	Ashlar, Herringbone





www.interface.com

South East Asia

Interface Asia
tel: 65-6478 1510
www.interface.com

South Korea

tel. 82-2-555 1734
www.interface.com

Japan

Interface Japan
tel: 81-3-5733 5211
www.interface.com

India

Interface India
tel: 91 80 46131313
www.interface.com

Beijing Studio

Interface China
tel: 86-10-6590 7810
www.interface.com.cn

Hongkong Studio

Interface China
tel: 852-2802 0838
www.interface.com.cn

Shanghai Studio

Interface China
tel: 86-21-6340 3868
www.interface.com.cn

Australia

Interface Australia
local toll free: 1800 008 101
www.interface.com

06/2018
SM0021T0



Climate change is undeniable. And reversible. Our mission is to prove it. **Join the #ClimateTakeBack and help create a climate fit for life.**