



# Verticals™

Interface®

Gravity keeps our tile on the floor, but we can't be held down when it comes to design. Verticals scales new heights in ideas about pattern. The latest addition in the 25 cm x 1 m skinny plank format, Verticals introduces all sorts of possibilities through color, texture and shape. Made with our 100% recycled content Type 6 Nylon, which includes reclaimed carpet fiber and fishing nets, each colorway incorporates many colors, adding depth and complexity to every tile. And when that crisscross texture pairs with the many different ways to install it, whether it's herringbone, ashlar or one of your own invention, that's when Verticals takes your space to a whole new level.

At Interface, we believe that where our students learn matters. That's why we're proud to support Green Apple, an initiative from the Center for Green Schools at the U.S. Green Building Council (USGBC). Green Apple is a global movement to put all children in healthy, high-performing and sustainable schools within this generation. This goes hand-in-hand with our own Mission Zero®, which keeps us focused on eliminating all of our environmental impacts by 2020.







PRODUCT VERTICALS COLOR 103736 PINNACLE INSTALLED ASHLAR  
PRODUCT ON LINE COLOR 103793 INDIGO INSTALLED PATTERN BY TILE



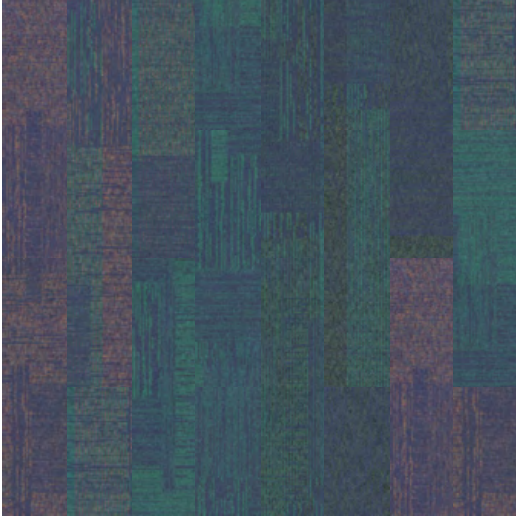


**PRODUCT** VERTICALS **COLORS** 104009 PRINCIPAL, 104014  
EXTREME, 104012 CROWN, 103734 PITCH **PRODUCT** ON LINE  
**COLOR** 103800 MUSTARD **INSTALLED** PATTERN BY TILE





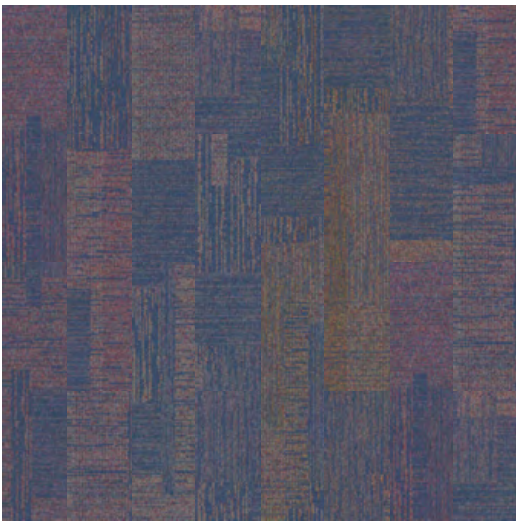
Verticals™ Colorline The colorline grids shown below are all in a 2 m x 2 m ashlar display.



103732 APEX



103734 PITCH

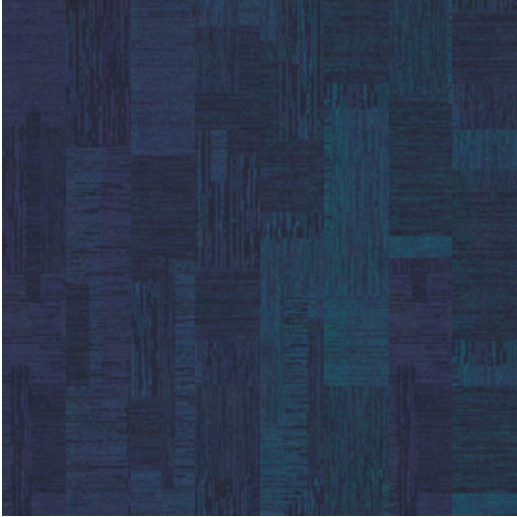


103733 RISE



103735 SUMMIT

Verticals™ Colorline The colorline grids shown below are all in a 2 m x 2 m ashlar display.



103736 PINNACLE



103738 ASCENT



103737 UPLIFT



103739 CREST



103740 ELEVATION



103742 LOFTY



103741 PEAK



103743 ALTITUDE

Verticals™ Colorline The colorline grids shown below are all in a 2 m x 2 m ashlar display.



104008 ZENITH



104010 MERIDIAN



104009 PRINCIPAL



104011 SOAR



104012 CROWN



104014 EXTREME



104013 VANTAGE



104015 VERTEX

Verticals™ Colorline The colorline grids shown below are all in a 2 m x 2 m ashlar display.



104016 PROMONTORY



104018 EMINENT



104017 SHARP



104019 PRECIPICE

All product specifications reflect averages derived from product sample testing, are subject to normal manufacturing and testing tolerances and inherent pattern variances, and may be changed without notice. For more information about these and other important attributes of the product(s) described herein, including recycled content and product warranty information, please see [www.interface.com/disclaimer](http://www.interface.com/disclaimer).

## Specifications



Modular, 25 cm x 1 m	138680AK00
Backing System	GlasBac® Tile
Yarn Manufacturer	Aquafil
Yarn System	100% Recycled Content Type 6 Nylon
Color System	100% Solution Dyed
Construction	Tufted Textured Loop
Preservative Protection	Intersept®
Soil/Stain Protection	Protekt2®
Pile Thickness	0.120 in., 3.0 mm
Pile Density	4,500
Fiber Modification Ratio	1.9 - 2.2
Total Recycled Content	58%
Indoor Air Quality	CRI Green Label Plus #GLP0820



## Why Our Modular Carpet?



### i2® Modular Carpet

*Minimize Waste & Save Money.*

Interface's i2 styles have mergeable dye lots. That means i2 tiles from different dye lots always blend with tiles of the same color, even when individual tiles are selectively replaced years later. This minimizes the need for attic stock and saves money. And i2 styles that install non directionally generate an average of only 1.5% installation waste as compared to 3-4% for typical modular carpet and an average of 14% for traditional roll carpet.



### Cool Carpet™

*Help Stop Global Warming and Earn a LEED® Innovation Credit.*

ALL Interface modular carpet sold in North America is third party verified climate neutral Cool Carpet. Cool Carpet zeros out all greenhouse gas (GHG) emissions associated with the entire lifecycle of your carpet. And climate neutral verified Cool Carpet may be eligible for a USGBC or CaGBC LEED Innovation Credit.



### TacTiles®

*No Glue Installation.* Our revolutionary TacTiles installation system eliminates the need for glue, adhering tiles securely together to form a floor that "floats" for greater flexibility, easier replacement and long-term performance. The result? Less mess, less waste and virtually no VOCs, not to mention an environmental footprint that is over 90% lower than that of traditional glue adhesives.



### Intersept®

*Mold Protection.* Our proprietary preservative, Intersept, protects our modular carpet against mold growth and odor-causing bacteria — guaranteed. Intersept treated carpet, with proper maintenance, shows no mold or bacterial growth when tested per the ASTM E2471 Standard Test Method. Intersept is low in toxicity, water insoluble and contains no arsenic, heavy metals, phenols or formaldehyde.



### ReEntry® 2.0

*Recyclable is Now a Reality.* Our ReEntry 2.0 program uses innovative technology that gives us the ability to cleanly separate the face fiber and backing of nearly any carpet type. Separated Type 6 and 6,6 nylon are recycled into new 6 and 6,6 nylon, while separated GlasBac® and similar competitor backings are recycled into new GlasBac®RE non-virgin PVC backing using our Cool Blue™ technology. The result? Products with up to 81% total recycled content, including as much as 35% post-consumer content.



### Sustainable Choice

*Environmental Responsibility.* Interface was the industry's first to earn an EPD (Environmental Product Declaration), which evaluates consistent factors based on full lifecycle assessment (LCA). We achieved an EPD based on our Convert™ products and have now expanded our EPDs into four categories covering more than 90% of our products.

In addition, all Interface products with GlasBacRE backing meet the Platinum level of the NSF/ANSI 140 Sustainable Assessment for Carpet. GlasBac or NexStep® backed products meet the Gold level. All may contribute toward a USGBC or CaGBC LEED Innovation Credit.

## Third Party Certifications

### cool carpet™

**Cool Carpet** – Our third party verified carbon offset program zeroes out all greenhouse gas (GHG) emissions associated with the entire lifecycle of your carpet.



**Environmental Product Declaration (EPD)** – A statement of product ingredients and environmental impacts over the entire life cycle of a product. A comprehensive life cycle assessment (LCA) is performed to ISO standards to develop an EPD, after which both the EPD and LCA must be third party verified.



**Sustainable Assessment for Carpet** – The only carpet sustainability standard in North America that evaluates the environmental impact of carpet for its entire lifecycle.



**CRI Green Label Plus** – An independent testing program that identifies carpet and adhesives with very low emissions of VOCs to help improve indoor air quality.

[www.interface.com](http://www.interface.com)

**United States Headquarters**

1503 Orchard Hill Road  
LaGrange, GA 30240  
1.800.336.0225 ext.6511

**Canadian Headquarters**

233 Lahr Drive  
Belleville, ON K8N 5S2  
1.800.267.2149 ext.2128

**Latin American Headquarters**

Rua Surubim, 577 - Conjuntos  
73/74 7º Andar  
04571-050 - São Paulo - SP  
+ 55 11 2196 0900

CIM # IFS00596 09/2013



**Mission Zero:**  
our promise to eliminate any  
negative impact our company  
may have on the environment  
by the year 2020.