



[www.interface.com](http://www.interface.com)

**United States Headquarters**

1503 Orchard Hill Road  
LaGrange, GA 30240  
1.800.336.0225 ext.56511

**Canadian Headquarters**

233 Lahr Drive  
Belleville, ON K8N 5S2  
1.800.267.2149 ext.52128

**Brazilian Headquarters**

Rua Surubim, 577 - Conjuntos  
73/74 7º Andar  
04571-050 - São Paulo - SP  
+ 55 11 2196 0900

**Latin American Headquarters**

Montes Urales # 415 Piso 6  
Col. Lomas de Chapultepec  
México City, D.F. 11000  
Mexico  
+ 52 55 6395 5100

08/2018



Climate change is undeniable. And reversible. Our mission is to prove it.  
**Join the #ClimateTakeBack and help create a climate fit for life.**

# Urban Retreat 303 & 304

**Interface®**



Urban Retreat™ 303 & 304

Elegance seems effortless when simple textures and nature's palette combine. With grace and warmth, UR303 humbly provides the foundation for the stronger elements of the interior design. Offered in eight tonal hues, this classic pattern makes reference to such essentials as natural linen, fine wools and silk. And now UR304 presents the same construction with a very delicate inclusion of color – three accent-threads highlight each colorway. We've booked the set with Monochrome™, the source for the accent yarns and an easy companion to this collection. In fact, if you don't see the perfect accent for your project here choose any accent from the Monochrome colorline and work with your AE to customize UR304.







## UR303 Colorline



102967 BARK



102968 CHARCOAL



102969 STRAW



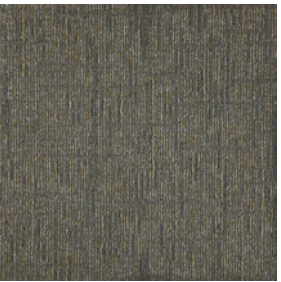
102970 GRANITE



102971 FLAX



102972 STONE



102973 SAGE



102974 ASH

## Specifications

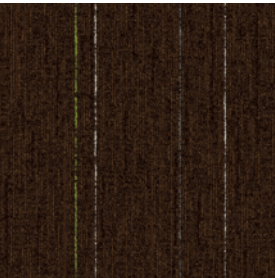
Modular, 50cm x 50cm	126990250H
Backing System	GlasBac®RE Tile
Yarn Manufacturer	Aquafil
Yarn System	100% Recycled Content Type 6 Nylon
Color System	100% Solution Dye
Construction	Tufted Sheared
Preservative Protection	Intersept®
Soil/Stain Protection	Protekt <sup>2</sup> ®
Pile Thickness	0.102 in., 2.6 mm
Pile Density	8,118
Total Recycled Content	88% (24% Post-Consumer)



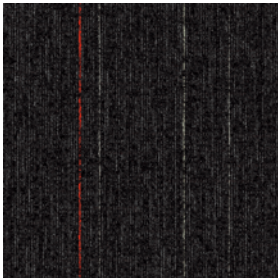
All product specifications reflect averages derived from product sample testing, are subject to normal manufacturing and testing tolerances and inherent pattern variances, and may be changed without notice. For more information about these and other important attributes of the product(s) described herein, including recycled content and product warranty information, please see [www.interface.com/disclaimer](http://www.interface.com/disclaimer).



UR304 Colorline



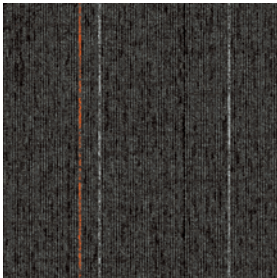
103657 BARK/LIME



103658 CHARCOAL/RED



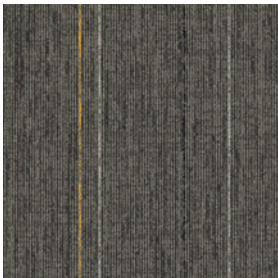
103659 STRAW/BLUE



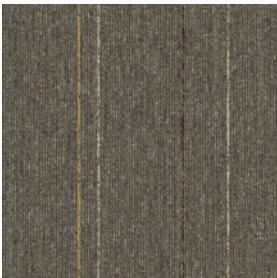
103660 GRANITE/ORANGE



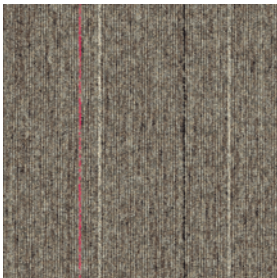
103661 FLAX/LILAC HAZE



103662 STONE/SPUN GOLD



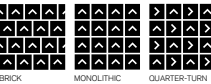
103663 SAGE/CITRUS



103664 ASH/VERY BERRY

Specifications

Modular, 50cm x 50cm	1273602500
Backing System	GlasBac® Tile
Yarn Manufacturer	Aquafil
Yarn System	100% Recycled Content Type 6 Nylon
Color System	100% Solution Dyed
Construction	Tufted Sheared
Preservative Protection	Intersept®
Soil/Stain Protection	Protekt <sup>2</sup> ®
Pile Thickness	0.133 in., 3.4 mm
Pile Density	6,767
Total Recycled Content	72%
Indoor Air Quality	CRI Green Label Plus #GLP0820



Looking for the perfect accent color for UR304 to fit your own tailored design? Choose from our full colorline of Monochrome™ solids to customize the accents.

Why Our Modular Flooring?



Modular Flooring

*Performance and flexibility.* Interface's standard backing systems set the industry standard for modular performance. Tiles stay on the floor with no upcurl, no tapping and no rippling effect, yet are easy to selectively replace. Our modular carpet is easier to handle than bulky roll carpet and produces an average of just 3-4% waste compared to roll carpet's average of 14%. And it installs seamlessly with our LVT, no transition strips needed.



Carbon Neutral Floors™

*Create a climate fit for life.* All Interface flooring sold globally is third party verified carbon neutral. We've taken a holistic approach to achieve carbon neutrality, first through reducing the carbon footprint of our products and then using carbon offsets for the remainder, including the emissions from raw materials, our manufacturing processes and product use to end of life.



TacTiles®

*No glue installation.* Our revolutionary TacTiles installation system eliminates the need for glue, adhering tiles securely together to form a floor that “floats” for greater flexibility, easier replacement and long-term performance. The result? Less mess, less waste and virtually no VOCs, not to mention an environmental footprint that is over 90% lower than that of traditional glue adhesives.



Intersept®

*Mold protection.* Our proprietary preservative, Intersept, protects our modular carpet against mold growth and odor-causing bacteria—guaranteed. Intersept treated carpet, with proper maintenance, shows no mold or bacterial growth when tested per the ASTM E2471 Standard Test Method. Intersept is EPA approved for safe use in carpet, water insoluble and contains no halogens, heavy metals, phenols or formaldehyde.



ReEntry®

*Recyclable is now a reality.* Through our ReEntry program and partnerships with our fiber suppliers and recycling centers throughout North America, separated Type 6 and 6,6 nylon are recycled into new 6 and 6,6 nylon while separated GlasBac®, GlasBacRE and similar competitor backings are recycled into new GlasBacRE non-virgin PVC backing using our Cool Blue™ technology. The result? Products with up to 89% total recycled content, including as much as 27% post-consumer content.



Sustainable Choice

*Environmental responsibility.* More than 95% of Interface products manufactured in the Americas carry the GreenCircle Certified Environmental Facts label, which has verified that standard Interface products are manufactured using 99% renewable energy and offer a minimum of 66% and 80% total recycled content when backed with GlasBac and GlasBacRE backing respectively. All Interface products include published HPDs (Health Product Declarations) or Declare Labels and more than 99% have a published EPD (Environmental Product Declaration) globally, and all products produced in the Americas are NSF/ANSI 140 gold or platinum certified.

Third Party Certification



**Bureau Veritas** – All Interface flooring sold globally is third party verified carbon neutral.



**Environmental Product Declaration (EPD)** – A statement of product ingredients and environmental impacts over the entire life cycle of a product. A comprehensive life cycle assessment (LCA) is performed to ISO standards to develop an EPD, after which both the EPD and LCA must be third party verified.



**Sustainable Assessment for Carpet** – The only carpet sustainability standard in North America that evaluates the environmental impact of carpet for its entire lifecycle.



**CRI Green Label Plus** – An independent testing program that identifies carpet and adhesives with very low emissions of VOCs to help improve indoor air quality.