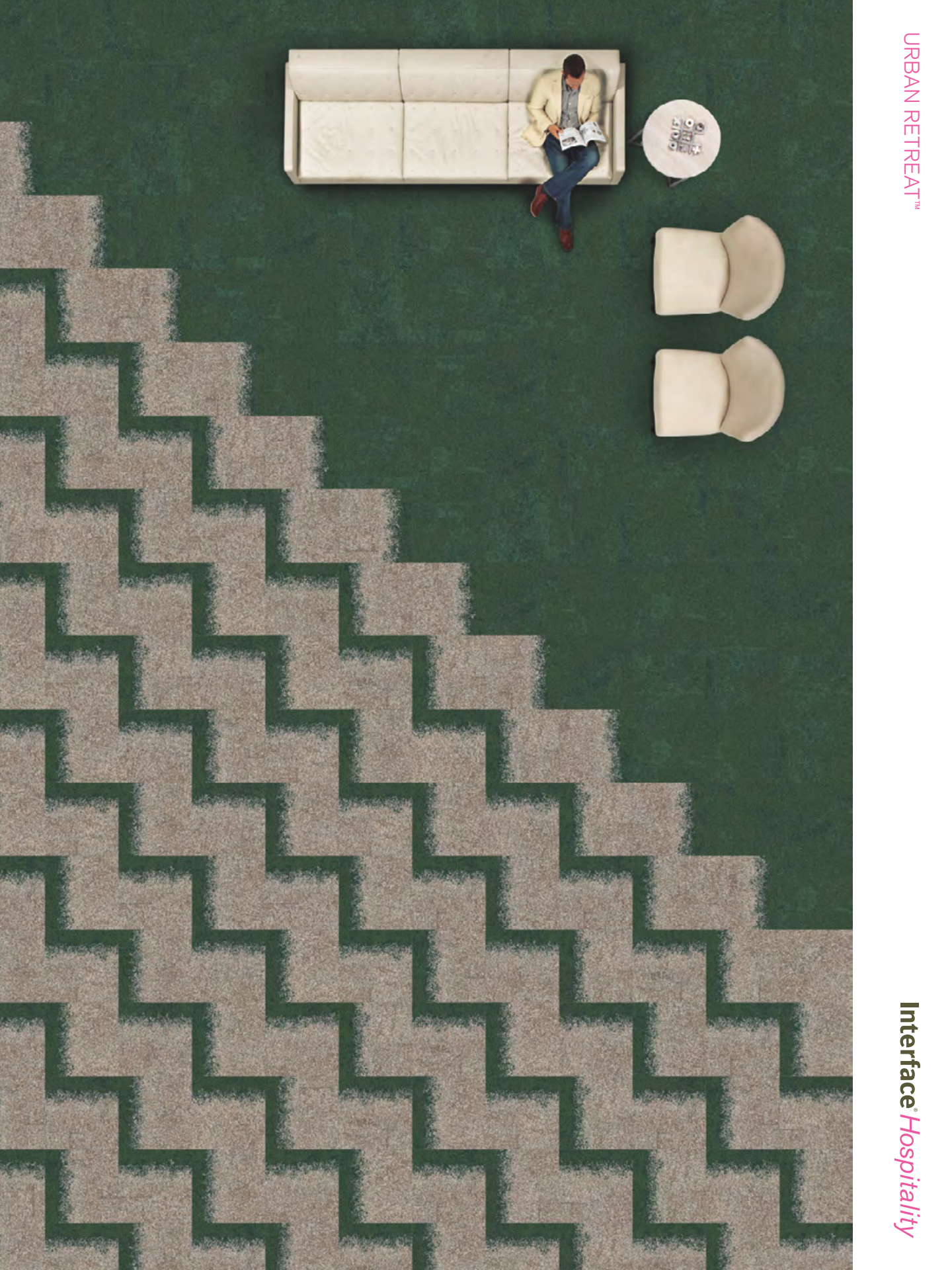


URBAN RETREAT™



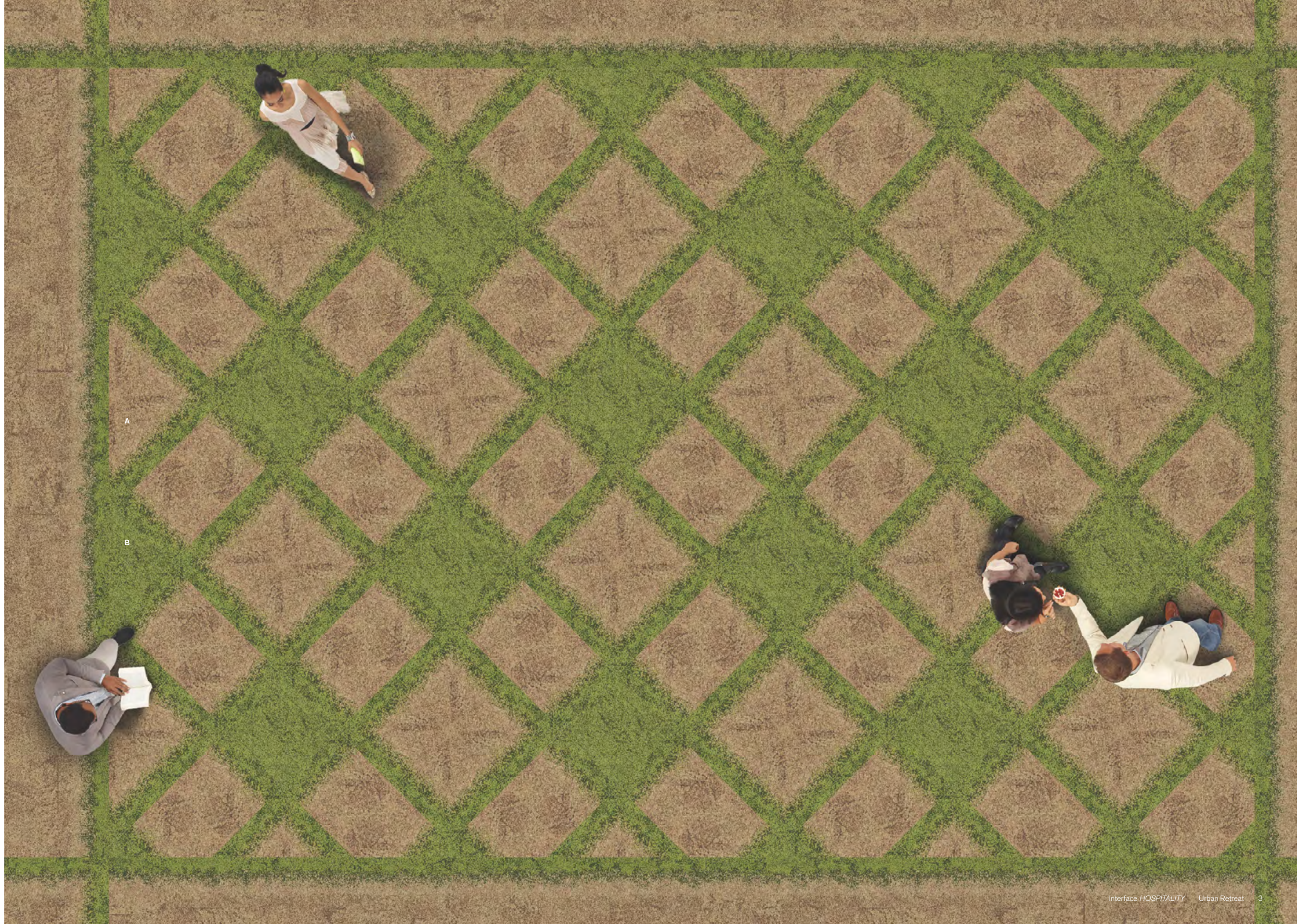
Interface® Hospitality

COVER
COLLECTION: Urban Retreat™
PRODUCT: UR101™
SIZE: 50cm
COLOR: Ash/Ivy
INSTALLATION: Pattern by Tile

COVER
COLLECTION: Urban Retreat
PRODUCT: UR103™
SIZE: 50cm
COLOR: Ivy
INSTALLATION: Pattern by Tile

A
COLLECTION: Urban Retreat
PRODUCT: UR101
SIZE: 50cm and 50cm diagonal cut
COLOR: Straw/Grass
INSTALLATION: Pattern by Tile

B
COLLECTION: Urban Retreat
PRODUCT: UR103
SIZE: 50cm
COLOR: Grass
INSTALLATION: Pattern by Tile



PRODUCT SPECIFICATIONS

UR101

Style: 127110250H (50cm x 50cm)

Backing System

GlasBac®RE Tile

Yarn System

100% Recycled Content Type 6 Nylon

Yarn Manufacturer

Aquafil

Color System

100% Solution Dyed

Construction

Tufted Pattern Loop

Preservative Protection

Intersept®

Soil / Stain Protection

Protekt2®

Pile Thickness

0.139 in., 3.5 mm

Pile Density

6,734

Total Recycled Content

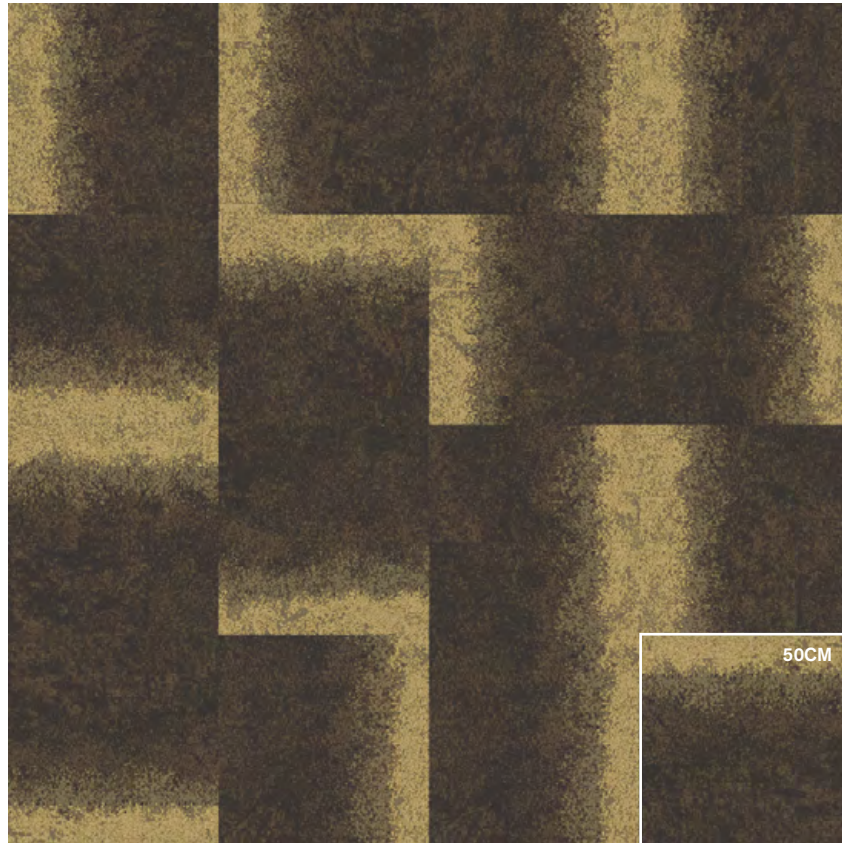
80% (35% Post Consumer)

Installation

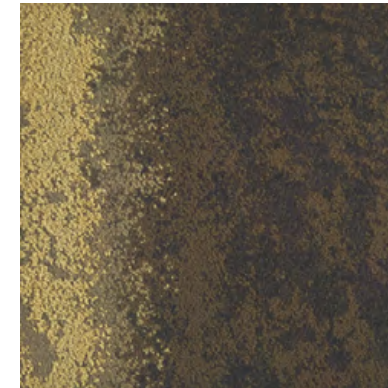
Non Directional

Indoor Air Quality

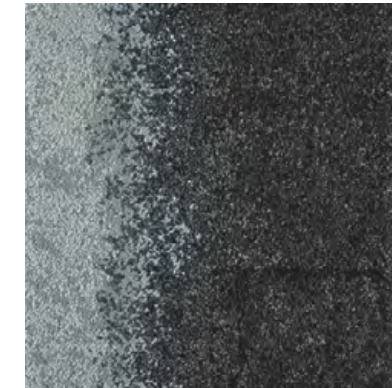
CRI Green Label Plus #GLP0820



NON DIRECTIONAL



103501 BARK/MOSS



103502 CHARCOAL/LICHEN



103503 STRAW/GRASS



103504 GRANITE/LICHEN



103505 FLAX/GRASS



103506 STONE/IVY



103507 SAGE/MOSS



103508 ASH/IVY

PRODUCT SPECIFICATIONS

UR102

Style: 127100250H (50cm x 50cm)

Backing System

GlasBac®RE Tile

Yarn System

100% Recycled Content Type 6 Nylon

Yarn Manufacturer

Aquafil

Color System

100% Solution Dyed

Construction

Tufted Pattern Loop

Preservative Protection

Intersept®

Soil / Stain Protection

Protekt2®

Pile Thickness

0.130 in., 3.3 mm

Pile Density

7,200

Total Recycled Content

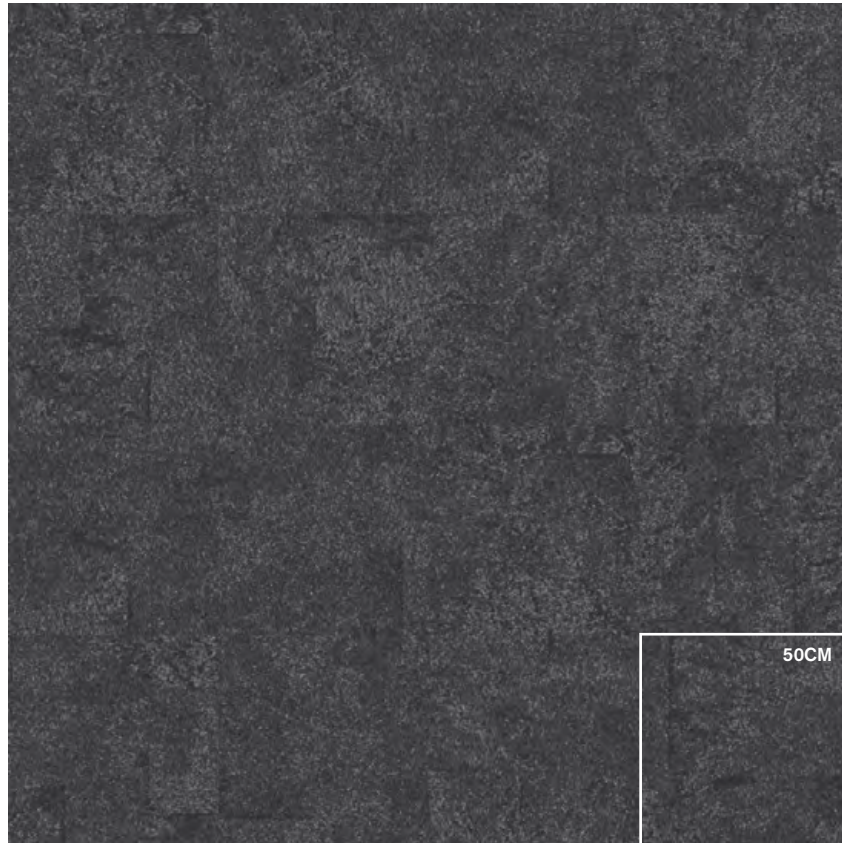
80% (35% Post Consumer)

Installation

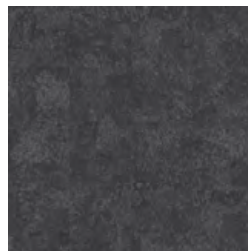
Non Directional, Quarter-Turn

Indoor Air Quality

CRI Green Label Plus #GLP0820



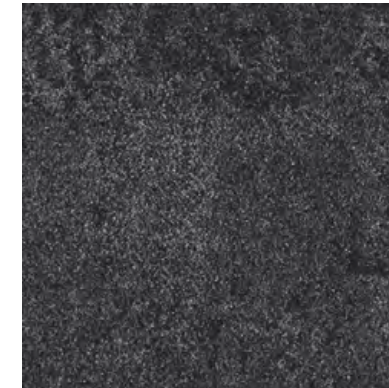
NON DIRECTIONAL



QUARTER-TURN



102991 BARK



102992 CHARCOAL



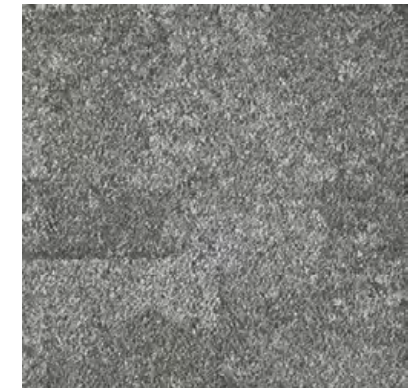
102993 STRAW



102994 GRANITE



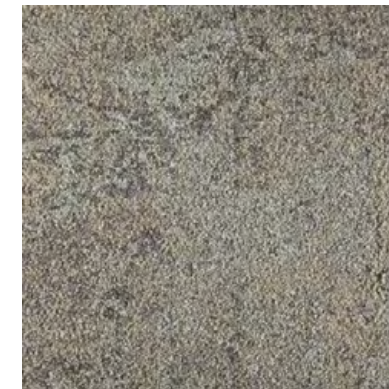
102995 FLAX



102996 STONE



102997 SAGE



102998 ASH

PRODUCT SPECIFICATIONS

UR103

Style: 127120250H (50cm x 50cm)

Backing System

GlasBac®RE Tile

Yarn System

100% Recycled Content Type 6 Nylon

Yarn Manufacturer

Aquafil

Color System

100% Solution Dyed

Construction

Tufted Pattern Loop

Preservative Protection

Intersept®

Soil / Stain Protection

Protekt2®

Pile Thickness

0.141 in., 3.6 mm

Pile Density

7,149

Total Recycled Content

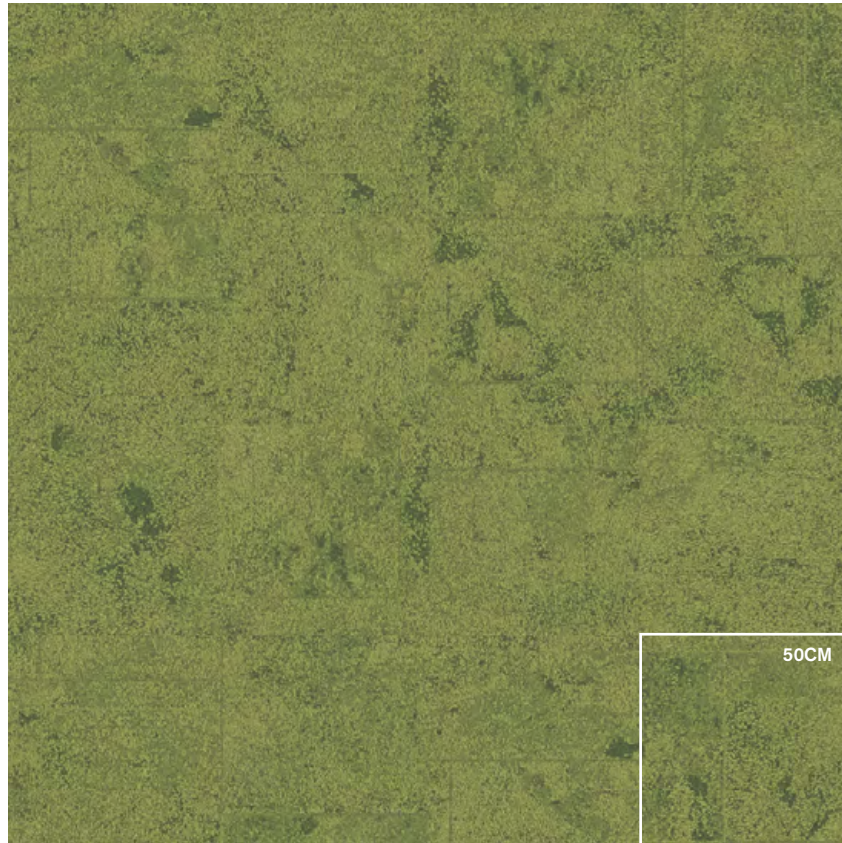
80% (35% Post Consumer)

Installation

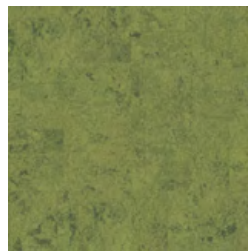
Non Directional, Quarter-Turn

Indoor Air Quality

CRI Green Label Plus #GLP0820



NON DIRECTIONAL



QUARTER-TURN



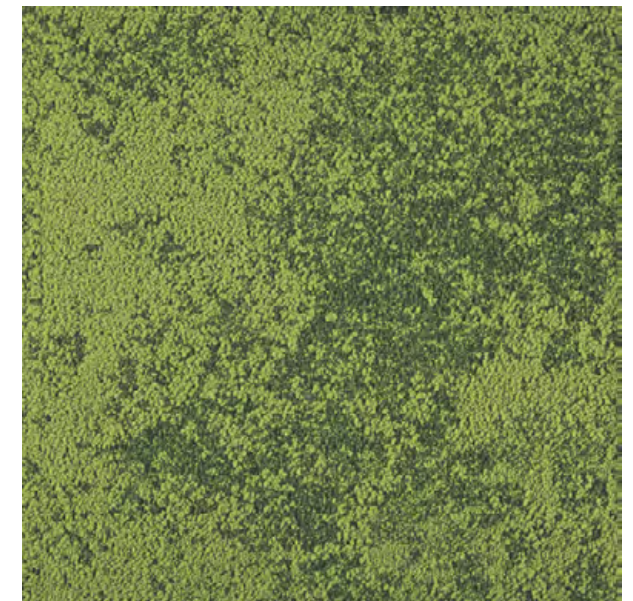
100638 LICHEN



100639 IVY



100640 MOSS



100641 GRASS

A COLLECTION: Urban Retreat
PRODUCT: UR601™
SIZE: 25cm x 1m
COLOR: Straw
INSTALLATION: Pattern by Tile

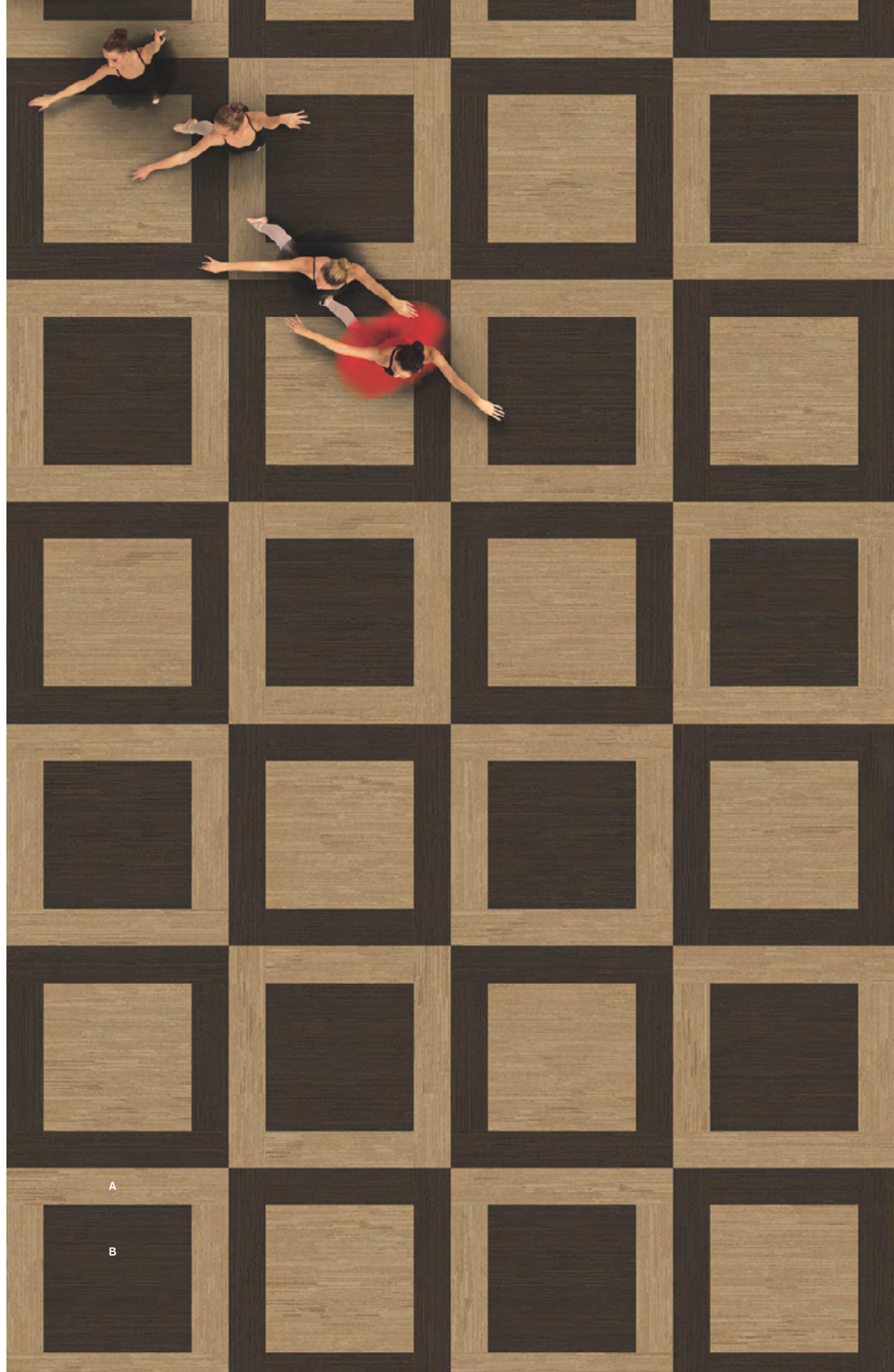
B COLLECTION: Urban Retreat
PRODUCT: UR501
SIZE: 25cm x 1m
COLOR: Bark
INSTALLATION: Pattern by Tile

C COLLECTION: Urban Retreat
PRODUCT: UR 101
SIZE: 50cm
COLOR: Bark/Moss
INSTALLATION: Pattern by Tile

D COLLECTION: Urban Retreat
PRODUCT: UR 103
SIZE: 60cm
COLOR: Moss
INSTALLATION: Non Directional

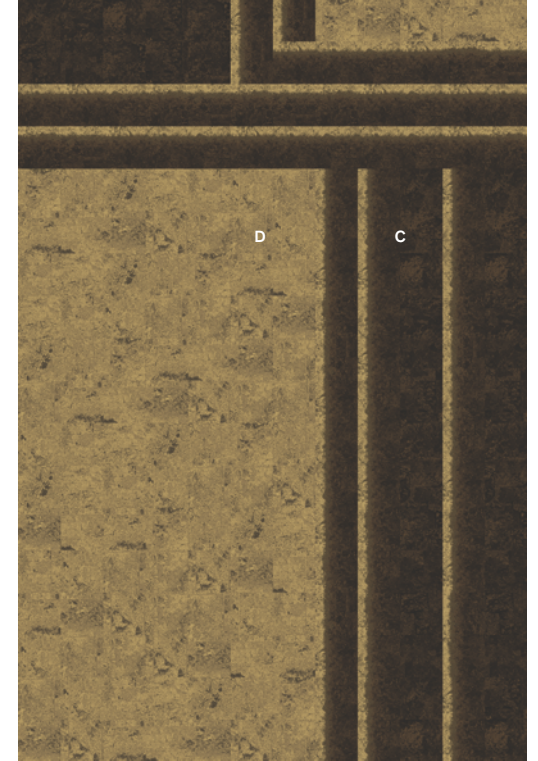
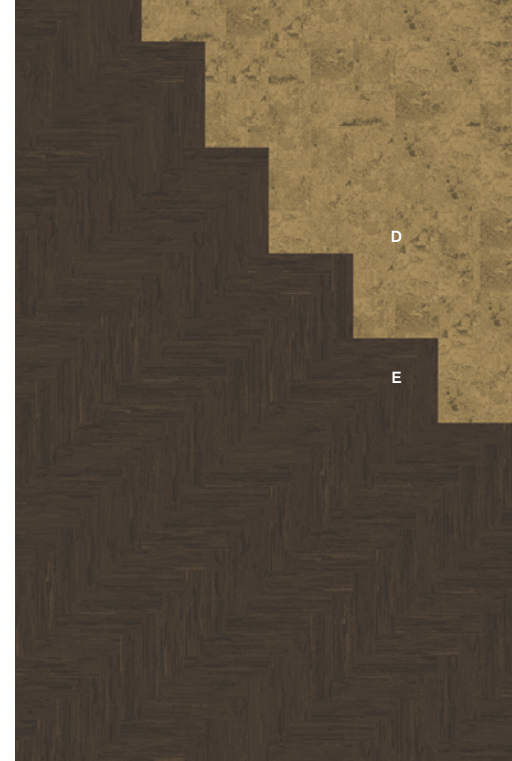
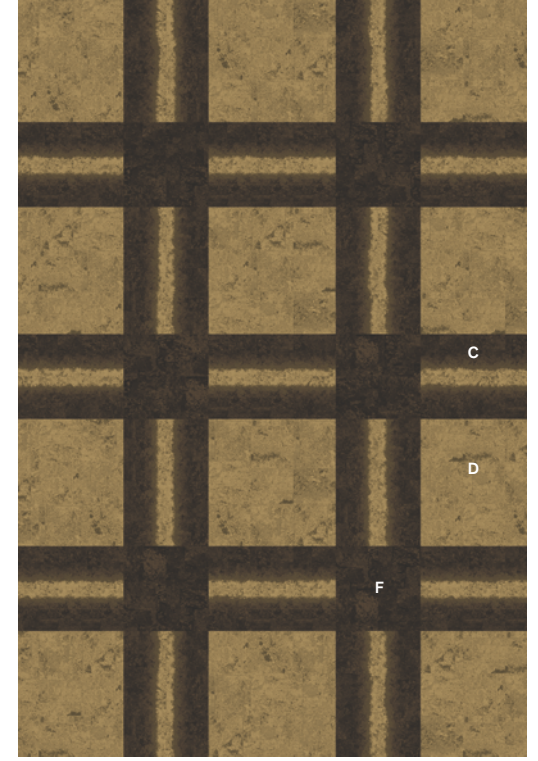
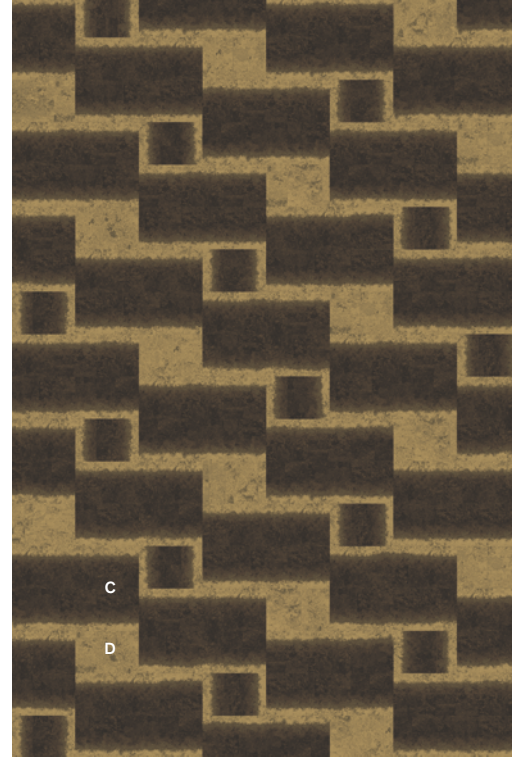
E COLLECTION: Urban Retreat
PRODUCT: UR501
SIZE: 25cm x 1m
COLOR: Bark
INSTALLATION: Herringbone

F COLLECTION: Urban Retreat
PRODUCT: UR102
SIZE: 60cm
COLOR: Bark
INSTALLATION: Pattern by Tile



DESIGN IDEAS

Pattern by Tile designs may include cut tiles.



A COLLECTION: Urban Retreat
PRODUCT: UR101
SIZE: 60cm
COLOR: Charcoal/Lichen
INSTALLATION: Pattern by Tile

B COLLECTION: Urban Retreat
PRODUCT: UR102
SIZE: 60cm and 50cm Half Tile
COLOR: Charcoal
INSTALLATION: Pattern by Tile

C COLLECTION: Urban Retreat
PRODUCT: UR103
SIZE: 60cm
COLOR: Lichen
INSTALLATION: Pattern by Tile



PRODUCT SPECIFICATIONS

UR201

Style: 126930250H (50cm x 50cm)

Backing System

GlasBac®RE Tile

Yarn System

100% Recycled Content Type 6 Nylon

Yarn Manufacturer

Aquafil

Color System

100% Solution Dyed

Construction

Tufted Sheared

Preservative Protection

Intersept®

Soil / Stain Protection

Protekt²®

Pile Thickness

0.187 in., 4.7 mm

Pile Density

5,390

Total Recycled Content

80% (35% Post Consumer)

Installation

Ashlar, Quarter-Turn

Indoor Air Quality

CRI Green Label Plus #GLP0820



ASHLAR



QUARTER-TURN



101888 BARK



101889 CHARCOAL



101890 STRAW



101891 GRANITE



101892 FLAX



101893 STONE



101894 SAGE



101895 ASH

Collection
URBAN RETREAT

Product
UR501™

COLORLINE

PRODUCT SPECIFICATIONS

- UR501**
Style: 127340AK0H (25cm x 1m)

- Backing System**
GlasBac®RE Tile

- Yarn System**
100% Recycled Content Type 6 Nylon

- Yarn Manufacturer**
Aquafil

- Color System**
100% Solution Dyed

- Construction**
Tufted Sheared

- Preservative Protection**
Intersept®

- Soil / Stain Protection**
Protekt2®

- Pile Thickness**
0.146 in., 3.7 mm

- Pile Density**
6,164

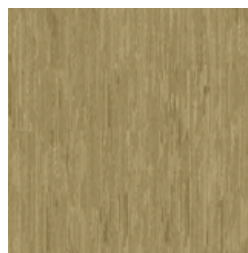
- Total Recycled Content**
80% (35% Post Consumer)

- Installation**
Ashlar, Herringbone

- Indoor Air Quality**
CRI Green Label Plus #GLP0820



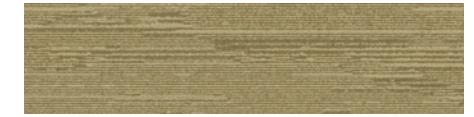
HERRINGBONE



ASHLAR



103607 GOLD



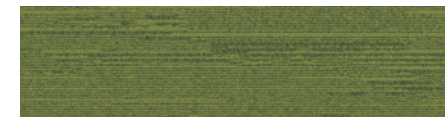
103608 MOSS



103609 BARK



103610 STRAW



103611 GRASS



103612 IVY



103613 FLAX



103614 SAGE



103615 BLUE



103616 NAVY



103617 ASH



103618 STONE



103619 ORANGE



103620 RED



103621 GRANITE



103622 CHARCOAL

A
COLLECTION: Urban Retreat
PRODUCT: UR601
SIZE: 26cm x 1m
COLORS: Blue, Navy, Grass, Ivy
INSTALLATION: Herringbone

B
COLLECTION: Urban Retreat
PRODUCT: UR101
SIZE: 60cm and 50cm Half Tiles
COLOR: Straw/Grass
INSTALLATION: Pattern by Tile

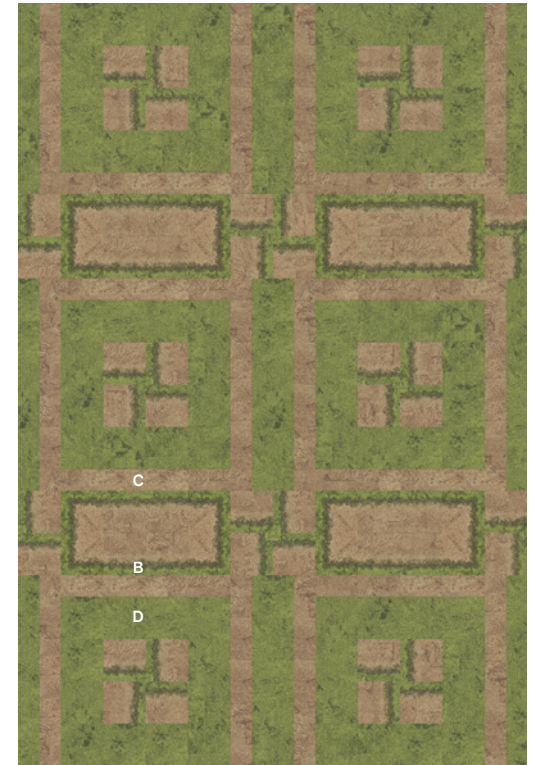
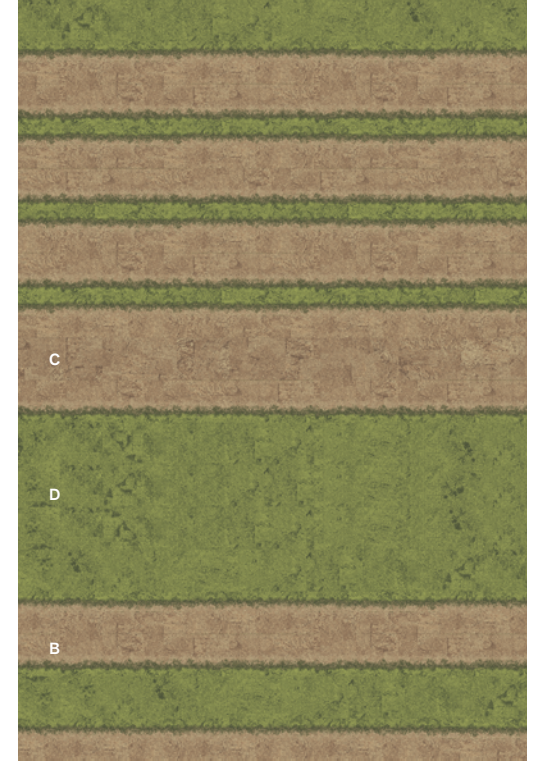
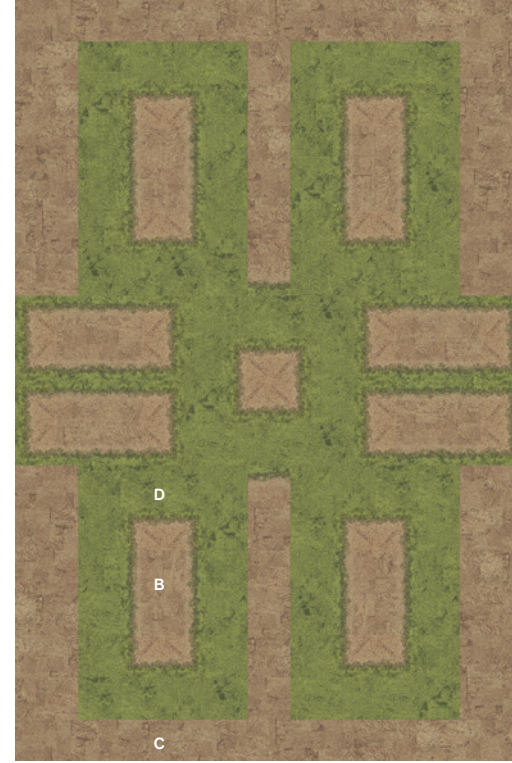
C
COLLECTION: Urban Retreat
PRODUCT: UR102
SIZE: 60cm
COLOR: Straw
INSTALLATION: Pattern by Tile

D
COLLECTION: Urban Retreat
PRODUCT: UR103
SIZE: 60cm
COLOR: Grass
INSTALLATION: Pattern by Tile



DESIGN IDEAS

Pattern by Tile designs may include cut tiles.





DESIGN YOUR FLOOR!

www.interfacehospitality.com

United States Headquarters

1503 Orchard Hill Road
LaGrange, GA 30240
1.800.336.0225 ext.6511

Canadian Headquarters

233 Lahr Drive
Belleville, ON K8N 5S2
1.800.267.2149 ext.2128

Brazilian Headquarters

Rua Surubim, 577 - Conjuntos
73/74 7o Andar
04571-050 - São Paulo - SP
+ 55 11 2196 0900

Latin American Headquarters

Montes Urales # 415 Piso 6
Col. Lomas de Chapultepec
México City, D.F. 11000
Mexico
+ 52 55 6395 5100

11/2014
CIM# IFS00610

Interface Hospitality

Mission Zero and the Mission Zero logo are registered trademarks of Interface, Inc.

