



Thread Story Collection

Interface®

Thread Story™ Collection

Inspired by the past. Designed for the future.

Thread Story celebrates the Bauhaus School's women weavers, whose work elevated fiber art as fine art. With carpet designs echoing contemporary handcraft, this collection honors a long tradition of experimentation.

Included in the Thread Story Collection are a total of six products in coordinating colorways. Drawn Thread™, Tangled & Taut™, and YesterWeave™ are neatly tailored textures in familiar neutrals. Loom of Life™ introduces bold, Bauhaus-inspired patterning, which Social Fabric™ plays up with sophisticated, vibrant color. And Future Woven™ goes more abstract with a unique mix of weave, texture, and pile height for added dimension on the floor.

Thread Story carpet tile is made with recycled nylon, and as part of Interface's commitment to Climate Take Back™, all of the products we sell are carbon neutral across their full product life cycle.



PRODUCT LOOM OF LIFE **COLOR** 106785 INK/ASH
PRODUCT YESTERWEAVE **COLOR** 106793 INK/WARP **INSTALLED** ASHLAR





PRODUCT SOCIAL FABRIC **COLOR** 106781 AQUA **PRODUCT** DRAWN THREAD
COLORS 106801 INK/TWILL, 106802 ASH/TWILL **INSTALLED** ASHLAR



Drawn Thread™ Colorline



106801 INK/TWILL



106802 ASH/TWILL



106803 SLATE/TWILL



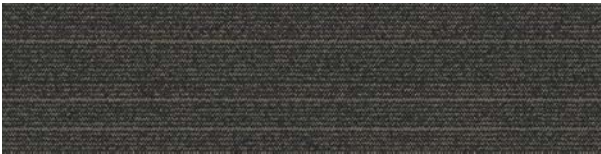
106804 FLINT/TWILL



106805 IRON/TWILL



106806 FOG/TWILL



106807 ONYX/TWILL



106808 TAUPE/TWILL

Specifications

Modular, 25cm x 1m	16191
Yarn Manufacturer	Aquafil
Yarn System	100% Recycled Content Nylon
Color System	100% Solution Dyed
Construction	Tufted Pattern Loop
Lifetime Antimicrobial	Intersept™
Soil/Stain Protection	Protekt2™
Pile Thickness	0.045 in., 1.1 mm
Pile Density	13,600



[View the full product specification on interface.com](#)

Tangled & Taut™ Colorline



106809 INK/RIB



106810 ASH/RIB



106811 SLATE/RIB



106812 FLINT/RIB



106813 IRON/RIB



106814 FOG/RIB



106815 ONYX/RIB



106816 TAUPE/RIB

Specifications

Modular, 25cm x 1m	16192
Yarn Manufacturer	Aquafil
Yarn System	100% Recycled Content Nylon
Color System	100% Solution Dyed
Construction	Tufted Pattern Loop
Lifetime Antimicrobial	Intersept™
Soil/Stain Protection	Protekt2™
Pile Thickness	0.052 in., 1.3 mm
Pile Density	11,769



[View the full product specification on interface.com](https://www.interface.com)



PRODUCT TANGLED & TAUT COLOR 106815 ONYX/RIB INSTALLED ASHLAR



YesterWeave™ Colorline



106793 INK/WARP



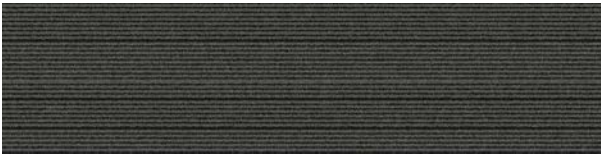
106794 ASH/WARP



106795 SLATE/WARP



106796 FLINT/WARP



106797 IRON/WARP



106798 FOG/WARP



106799 ONYX/WARP



106800 TAUPE/WARP

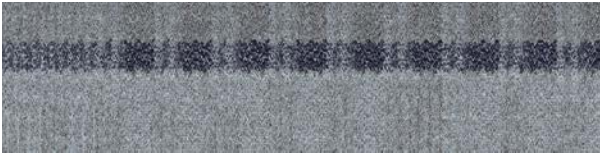
Specifications

Modular, 25cm x 1m	16190
Yarn Manufacturer	Aquafil
Yarn System	100% Recycled Content Nylon
Color System	100% Solution Dyed
Construction	Tufted Pattern Loop
Lifetime Antimicrobial	Intersept™
Soil/Stain Protection	Protekt2™
Pile Thickness	0.052 in., 1.3 mm
Pile Density	11,769

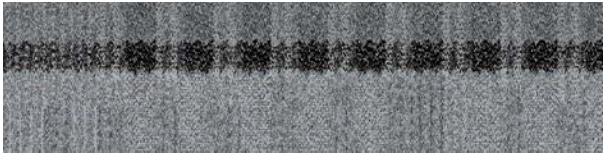


View the full product specification on [interface.com](https://www.interface.com)

Loom of Life™ Colorline



106785 INK/ASH



106786 SLATE/FLINT



106787 IRON/FOG



106788 ONYX/TAUPE

Specifications

Modular, 25cm x 1m	16189
Yarn Manufacturer	Aquafil
Yarn System	100% Recycled Content Nylon
Color System	100% Solution Dyed
Construction	Tufted Pattern Loop
Lifetime Antimicrobial	Intersept™
Soil/Stain Protection	Protekt2™
Pile Thickness	0.078 in., 2.0 mm
Pile Density	9,231

[View the full product specification on interface.com](#)

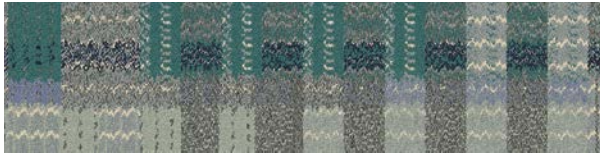




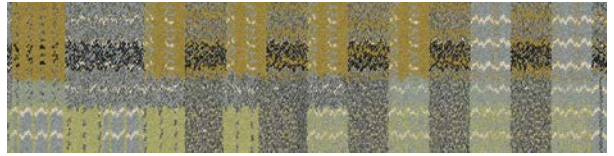
PRODUCT LOOM OF LIFE COLOR 106786 SLATE/FLINT
PRODUCT TANGLED & TAUT COLOR 106811 SLATE/RIB INSTALLED ASHLAR



Social Fabric™ Colorline



106781 AQUA



106782 MEADOW



106783 SUNSET



106784 SPICE

Specifications

Modular, 25cm x 1m
Yarn Manufacturer
Yarn System
Color System
Construction
Lifetime Antimicrobial
Soil/Stain Protection
Pile Thickness
Pile Density

16188
Aquafil
100% Recycled Content Nylon
100% Solution Dyed
Tufted Pattern Loop
Intersept™
Protekt2™
0.093 in., 2.4 mm
10,452

View the full product specification on [interface.com](https://www.interface.com)

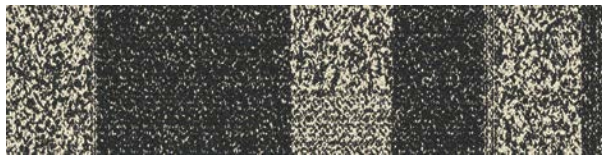


ASHLAR HERRINGBONE

Future Woven™ Colorline



106789 GREY



106790 FLINT



106791 MICA



106792 FIELDSTONE

Specifications

Modular, 25cm x 1m
Yarn Manufacturer
Yarn System
Color System
Construction
Lifetime Antimicrobial
Soil/Stain Protection
Pile Thickness
Pile Density

15032
Aquafil
100% Recycled Content Nylon
100% Solution Dyed
Tufted Pattern Loop
Intersept™
Protekt2™
0.134 in., 3.4 mm
8,866

View the full product specification on [interface.com](https://www.interface.com)





PRODUCT FUTURE WOVEN COLOR 106792 FIELDSTONE INSTALLED ASHLAR

Why Our Modular Flooring?



Modular Flooring

Performance and flexibility.

Interface's standard backing systems set the industry standard for modular performance. Tiles stay on the floor with no upcurl, no tapping and no rippling effect, yet are easy to selectively replace. Our modular carpet is easier to handle than bulky roll carpet and produces an average of just 3-4% waste compared to roll carpet's average of 14%. And it installs seamlessly with our LVT, no transition strips needed.



TacTiles™

No glue installation. Our revolutionary TacTiles installation system eliminates the need for glue, adhering tiles securely together to form a floor that "floats" for greater flexibility, easier replacement and long-term performance. The result? Less mess, less waste and virtually no VOCs, not to mention an environmental footprint that is over 90% lower than that of traditional glue adhesives.



Intersept™

Mold protection. Our proprietary preservative, Intersept, protects our modular carpet against mold growth and odor-causing bacteria—guaranteed. Intersept treated carpet, with proper maintenance, shows no mold or bacterial growth when tested per the ASTM E2471 Standard Test Method. Intersept is EPA approved for safe use in carpet, water insoluble and contains no halogens, heavy metals, phenols or formaldehyde.

Samples

Order samples at www.interface.com. You'll receive email order confirmations, 24/7 access to order status and more. Not near a computer? You can also request samples by calling one of the numbers below.

United States
1.877.605.1500

Canada
1.866.398.3192

Brazil
+ 55 11 2196 0900

Latin America
+ 52 55 6395 5100

www.interface.com

Register at www.interface.com to:

- Browse products and order samples
- View carpet in a variety of room scenes
- Browse floor designs, change colors, view as a grid or in a room, download and share
- Use our LEED Calculator
- Check order status and inventory availability
- Sign up to get the latest information on Interface products and news

InterCircle Sample Return

Help us close the loop on the carpet sampling process. Through our InterCircle Sample Return program, sample materials stay out of the landfill and are re-used as samples until it is time to recycle them into new carpet. By reducing sample production material and diverting old materials from the landfill, we can reduce our overall environmental footprint.

Call 1.877.605.1500 (U.S.) or 1.866.398.3192 (Canada) to order a sample return bag with a prepaid return label.



ReEntry™

Recyclable is now a reality. Through our ReEntry program and partnerships with our fiber suppliers and recycling centers throughout North America, separated Type 6 and 6,6 nylon are recycled into new 6 and 6,6 nylon while separated GlasBac™, GlasBacRE, similar competitive backings and our own LVT are recycled into new GlasBacRE non-virgin PVC backing using our Cool Blue™ technology. The result? Products with up to 89% total recycled content, including as much as 27% post-consumer content.



Sustainable Choice

Environmental responsibility. More than 95% of Interface products manufactured in the Americas carry the GreenCircle Certified Environmental Facts label, which has verified that standard Interface products are manufactured using 99% renewable energy and offer a minimum of 66% and 80% total recycled content when backed with GlasBac and GlasBacRE backing respectively.

Transparency and certified sustainability leadership come standard on all Interface products, including published ingredients in HPDs (Health Product Declarations) or Declare Labels. In addition, more than 99% of our products globally have a published EPD (Environmental Product Declaration), which evaluates consistent factors based on full life cycle assessment (LCA). And, all Interface products with GlasBacRE backing are certified to the Platinum level of the NSF/ANSI 140 Sustainable Assessment for Carpet. GlasBac backed products meet the Gold level. NSF/ANSI 140 certified products contribute toward a USGBC or CaGBC LEED credit.

Third Party Certification
Our Carbon Neutral Floors™ program is annually verified by a third party.



Environmental Product Declaration (EPD) – A statement of product ingredients and environmental impacts over the entire life cycle of a product. A comprehensive life cycle assessment (LCA) is performed to ISO standards to develop an EPD, after which both the EPD and LCA must be third party verified.



Gold Certified
NSF/ANSI 140 - 2007a
Consumer Product Assessment

Sustainable Assessment for Carpet – The only carpet sustainability standard in North America that evaluates the environmental impact of carpet for its entire lifecycle.



CRI Green Label Plus – An independent testing program that identifies carpet and adhesives with very low emissions of VOCs to help improve indoor air quality.



RECYCLED
Paper made from
recycled material
FSC® C009723



PLEASE RECYCLE

Printed on 50% post consumer waste (PCW) fiber manufactured using wind power.

All product specifications reflect averages derived from product sample testing, are subject to normal manufacturing and testing tolerances and inherent pattern variances, and may be changed without notice. For more information about these and other important attributes of the product(s) described herein, including recycled content and product warranty information, please see www.interface.com/disclaimer.

We have tried our very best to accurately represent product colors. However, due to the nature of printed materials, color of actual products may vary slightly. Please request a sample to see actual product color.

www.interface.com

United States Headquarters

1280 West Peachtree Street NW
Atlanta, GA 30309
1.800.634.6032

Canadian Headquarters

233 Lahr Drive
Belleville, ON K8N 5S2
1.800.267.2149 ext.52128

Brazilian Headquarters

Rua Surubim, 577 - Conjuntos
73/74 7º Andar
04571-050 - São Paulo - SP
+ 55 11 2196 0900

Latin American Headquarters

Montes Urales # 415 Piso 6
Col. Lomas de Chapultepec
Mexico City, CDMX, C.P. 11000
Mexico
+52 55 2791 6812

CIM # IFS00873 09/2020



Climate change is undeniable. And reversible. Our mission is to prove it.
Join the #ClimateTakeBack and help create a climate fit for life.