



The
FLOR[®]
Collection
by **Interface**[®]

The
FLOR
Collection
by **Interface**



Product Check It Out Colour Pearl
Installed Monolithic

Where Innovation Meets Elegance.

Introducing The FLOR Collection by Interface: curated designs that combine beauty and performance to elevate any space. Designed with meticulous attention to detail, this collection embodies sophistication and timeless charm.

Seamlessly integrating with Interface carpet tiles and resilient flooring, The FLOR Collection offers boundless design possibilities, allowing each space to reflect its unique personality. From dynamic conference rooms to welcoming reception areas and intimate guestrooms, these premium products offer a touch of luxury. Easy to install and responsibly sourced, The FLOR Collection stands as a testament to beauty and sustainability, reflecting the high performance you have come to expect from Interface.

Experience the essence of intentional design with The FLOR Collection—where every design invites you to redefine your space with understated style.

www.interface.com



Product Tailored Touch Colour Linen
Installed Monolithic

Designed by Lauren Stewart / Campfire & Co.
Photo by Mindie Ballard

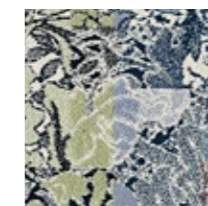


Product Among The Wildflowers Colour Grey

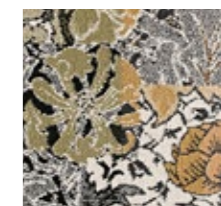
Among The Wildflowers

A graphic floral pattern rug inspired by the Arts and Crafts movement, these romantic and natural forms evoke colours found in meadows. The raised loops frame out the organic forms to give it added depth and dimension.

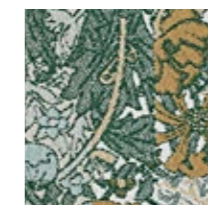
See page 36 for product specifications



8257001 PERIWINKLE



8257002 PALM



8257003 IVY

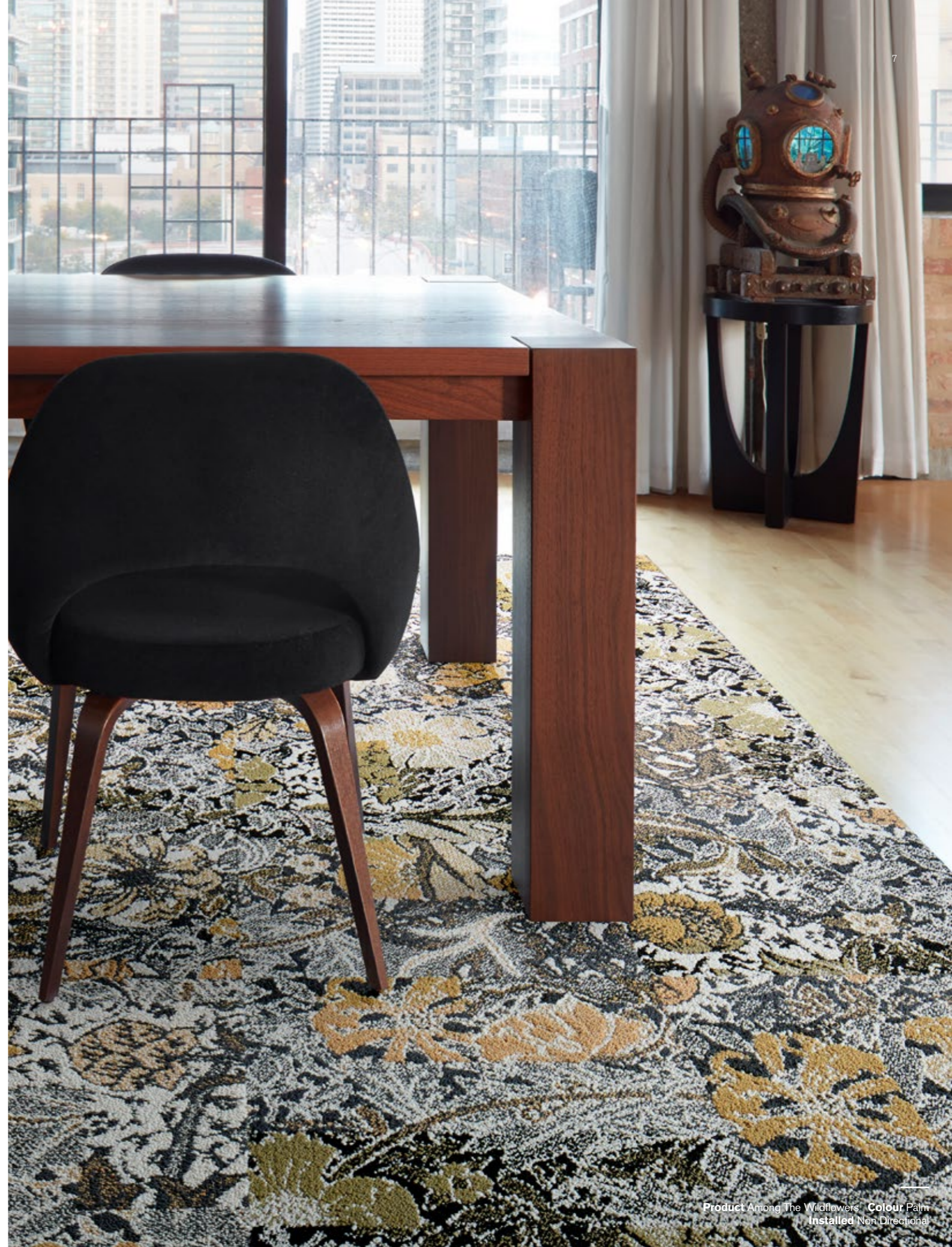


8257004 GREY

Product Among The Wildflowers Colour Ivy
Installed Non Directional



Product Among The Wildflowers Colour Periwinkle
Installed Non Directional



Product Among The Wildflowers Colour Palm
Installed Non Directional

Anthracite

Sophistication that shines. Like the subtle shimmer of its namesake stone, metallic threads make this product stand out.

See page 36 for product specifications



9474001 FLINT/SILVER



9474002 CHALK/SILVER



9474003 PEARL/GOLD



Product Anthracite Colour Pearl/Gold

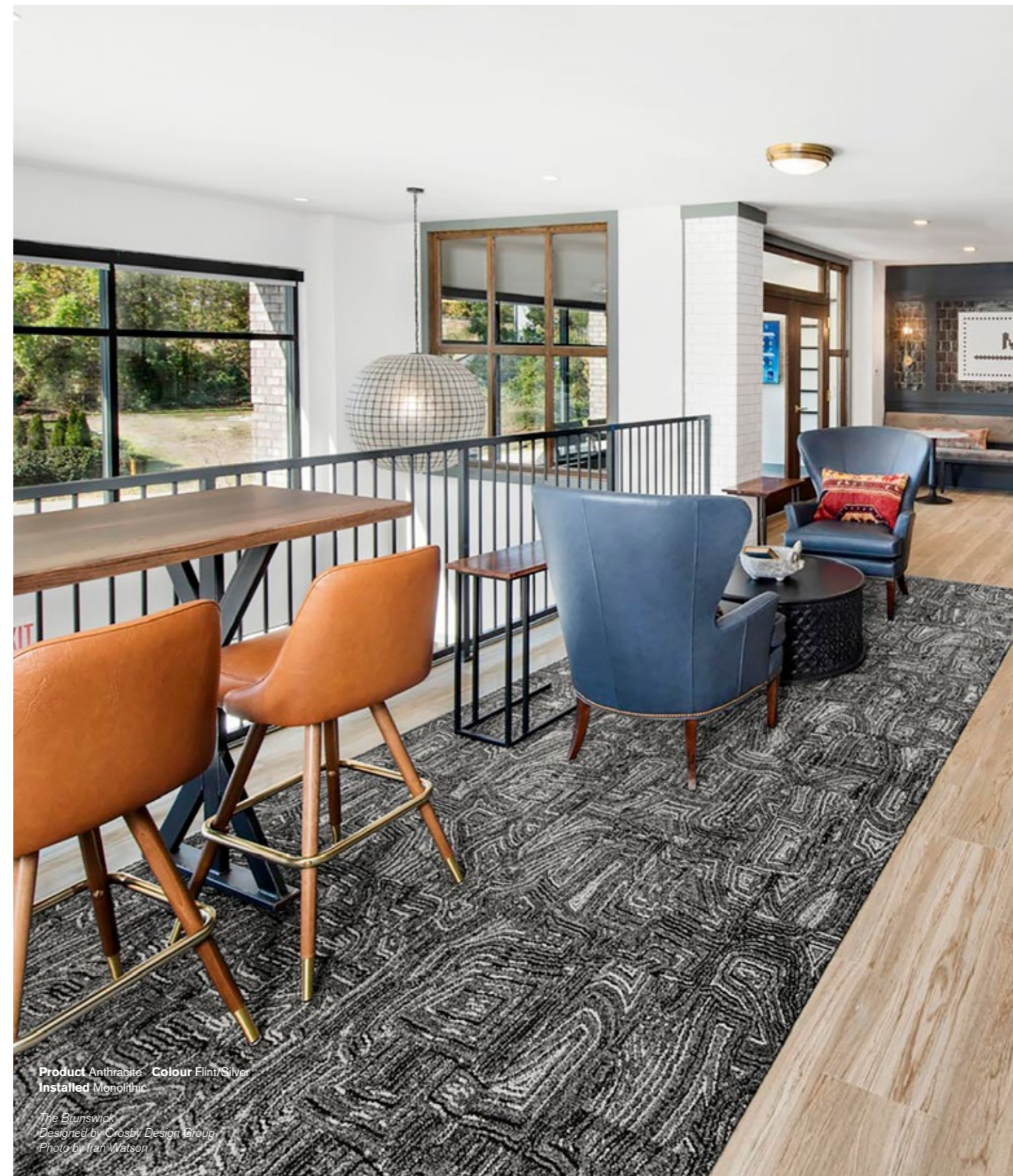


Product Anthracite Colour Chalk/Silver
Installed Monolithic

Retreat at East
Designed by HPA Design Group
Architecture by Niles Bolton
Photo by Studio KW Photography



Product Anthracite Colour Flint/Silver
 Installed Monolithic



Product Anthracite Colour Flint/Silver
 Installed Monolithic

*The Brunswick
 Designed by Crosby Design Group
 Photo by Iran Watson*



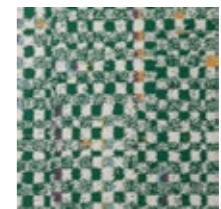
Check It Out

This style is anything but inside the box. Create a chic scene with this fashion-favourite checkerboard print.

See page 36 for product specifications



9837001 MARIGOLD



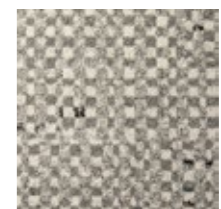
9837002 EMERALD



9837003 BLACK



9837004 PEARL



9837005 STONE



Product Check It Out Colour Emerald

Product Check It Out Colour Black Installed Monolithic



Product Check It Out Colour Marigold
Installed Monolithic



Product Check It Out Colour Pearl
Installed Monolithic



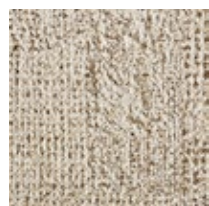
Product It's Snow Problem Colour Frost



It's Snow Problem

This multi-level loop style is a quiet delight any time of year. Makes a great neutral for the comfort and traffic of all spaces.

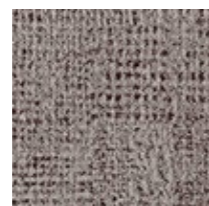
See page 36 for product specifications



7768001 PEARL



7768002 FROST



7768003 GREY



7768004 CHALK



7768005 BONE



Product It's Snow Problem Colour Bone
 Installed Non Directional

Forerunner Ventures
 Design and Architecture by Fennie+Mehl Architects
 Photo by Casey Dunn



Product It's Snow Problem Colour Bone
 Installed Non Directional



Product Savoir Faire - Colour Patina/Silver
Installed Monolithic



Product Savoir Faire - Colour Dusk/Silver

Savoir Faire

Subtle, neutral hues add depth and dimension with a luxe finish reminiscent of wool and silk rugs - a versatile option for your space.

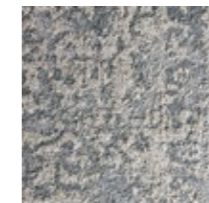
See page 37 for product specifications



9888001 PATINA/SILVER



9888002 GREY/SILVER



9888003 DUSK/SILVER



9888004 LOAM/SILVER



Tailored Touch

Keep the space relaxed and inviting with this nubby, speckled Berber style rug. Shades of colour blend in a subtle way through each loop, giving it depth and interest.

See page 37 for product specifications



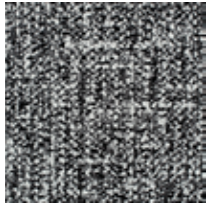
8174001 LINEN



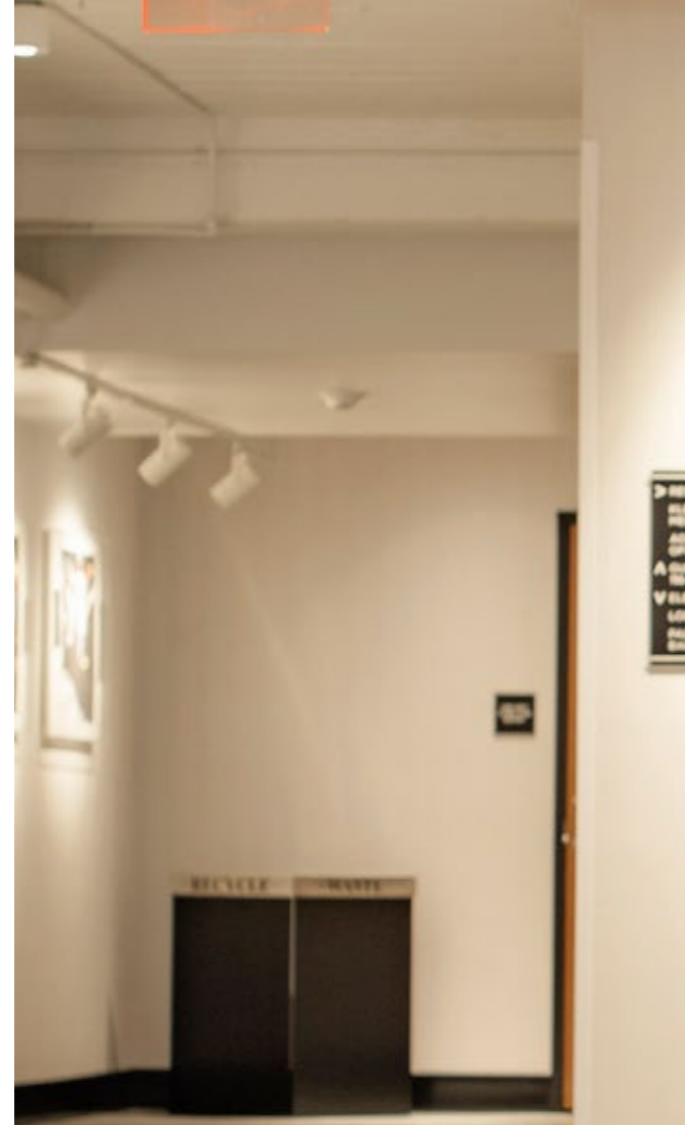
8174002 NATURAL



8174003 CHARCOAL



8174004 BLACK



Product Tailored Touch Colour Black

Product Tailored Touch Colour Natural
Installed Monolithic

Hotel Indigo Madison Downtown
Nick Beard Photography



Product Tailored Touch Colour Linen
Installed Monolithic



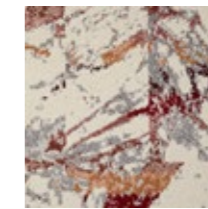
Product Tailored Touch Colour Natural
Installed Monolithic



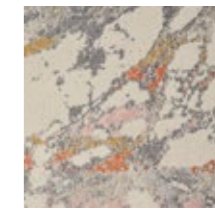
You're So Vein

Metallic veining and rich hues come together in this style reminiscent of marble. Much like the metamorphic rock, no two tiles are alike so you can create a look that's unique.

See page 37 for product specifications



9793001 SPICE/SILVER



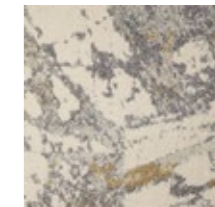
9793002 CORAL/SILVER



9793003 MAIZE/SILVER



9793004 COBALT/SILVER



9793005 BEIGE/SILVER



Product You're So Vein Colour Maize/Silver

Product You're So Vein Colour Coral/Silver
Installed Non Directional

2022 Southeastern Designer Showhouse
Designed by Venture Games, LLC
Architecture by Linda MacArthur Architect
Photo by Tomas Espinoza



Product You're So Vein Colour Maize/Silver
 Installed Non Directional



Product You're So Vein Colour Cobalt/Silver
 Installed Non Directional



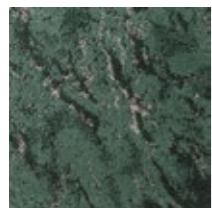
Product Zera Colour Pearl



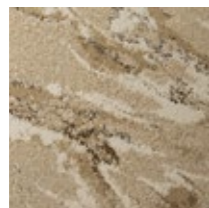
Zera

With a colour range of rich forest green to slate grey, this rug style captures the infinite elegance of marbled stone.

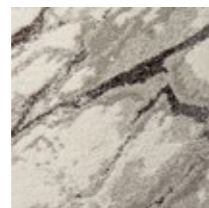
See page 37 for product specifications



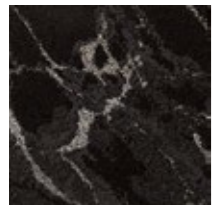
9826001 PINE



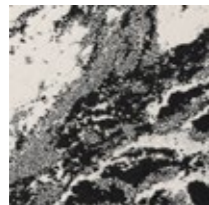
9826002 PEARL



9826003 BONE



9826004 BLACK



9826005 BONE/BLACK



Carpet Product Zera Colour Pine Installed Non Directional
 LVT Product Northern Grain Colour Antique Wash Installed Ashlar



Product Zera Colour Black
 Installed Non Directional

Specifications

Among The Wildflowers

Style Code	8257
Product Construction	Tapestry Tufted Patterned Textured Loop
Yarn System	100% Recycled Solution Dyed Nylon
Machine Gauge	1/10
Pile Thickness	4.0 ± 0.5mm
Total Thickness	8.0 ± 0.5mm
Tile Size	50 x 50cm
ACCS Grading	Commercial Extra Heavy Duty & Stairs
Lifetime Antimicrobial	Intersept®
Soil / Stain Protection	Protekt ² ®

Installation Methods



BROWSE IMAGES
ORDER SAMPLES

Anthracite

Style Code	9474
Product Construction	Tapestry Tufted Patterned Textured Loop
Yarn System	100% Recycled Solution Dyed Nylon
Machine Gauge	1/10
Pile Thickness	3.5 ± 0.5mm
Total Thickness	7.5 ± 0.5mm
Tile Size	50 x 50cm
ACCS Grading	Commercial Extra Heavy Duty & Stairs
Lifetime Antimicrobial	Intersept®
Soil / Stain Protection	Protekt ² ®

Installation Methods



BROWSE IMAGES
ORDER SAMPLES

Check It Out

Style Code	9837
Product Construction	Tapestry Tufted Patterned Textured Tip Sheared
Yarn System	100% Recycled Solution Dyed Nylon
Machine Gauge	1/10
Pile Thickness	4.5 ± 0.5mm
Total Thickness	8.5 ± 0.5mm
Tile Size	50 x 50cm
ACCS Grading	Commercial Extra Heavy Duty & Stairs
Lifetime Antimicrobial	Intersept®
Soil / Stain Protection	Protekt ² ®

Installation Methods



BROWSE IMAGES
ORDER SAMPLES

It's Snow Problem

Style Code	7768
Product Construction	Tapestry Tufted Patterned Textured Loop
Yarn System	100% Recycled Solution Dyed Nylon
Machine Gauge	1/10
Pile Thickness	4.0 ± 0.5mm
Total Thickness	8.0 ± 0.5mm
Tile Size	50 x 50cm
ACCS Grading	Commercial Heavy Duty & Stairs
Lifetime Antimicrobial	Intersept®
Soil / Stain Protection	Protekt ² ®

Installation Methods



BROWSE IMAGES
ORDER SAMPLES

Savoir Faire

Style Code	9888
Product Construction	Tapestry Tufted Patterned Textured Loop
Yarn System	100% Recycled Solution Dyed Nylon
Machine Gauge	1/10
Pile Thickness	5.0 ± 0.5mm
Total Thickness	9.0 ± 0.5mm
Tile Size	50 x 50cm
ACCS Grading	Commercial Extra Heavy Duty & Stairs
Lifetime Antimicrobial	Intersept®
Soil / Stain Protection	Protekt ² ®

Installation Methods



BROWSE IMAGES
ORDER SAMPLES

Tailored Touch

Style Code	8174
Product Construction	Tapestry Tufted Patterned Textured Loop
Yarn System	100% Recycled Solution Dyed Nylon
Machine Gauge	1/10
Pile Thickness	4.0 ± 0.5mm
Total Thickness	8.0 ± 0.5mm
Tile Size	50 x 50cm
ACCS Grading	Commercial Extra Heavy Duty & Stairs
Lifetime Antimicrobial	Intersept®
Soil / Stain Protection	Protekt ² ®

Installation Methods



BROWSE IMAGES
ORDER SAMPLES

You're So Vein

Style Code	9793
Product Construction	Tapestry Tufted Patterned Textured Loop
Yarn System	100% Recycled Solution Dyed Nylon
Machine Gauge	1/10
Pile Thickness	4.0 ± 0.5mm
Total Thickness	8.0 ± 0.5mm
Tile Size	50 x 50cm
ACCS Grading	Commercial Extra Heavy Duty & Stairs
Lifetime Antimicrobial	Intersept®
Soil / Stain Protection	Protekt ² ®

Installation Methods



BROWSE IMAGES
ORDER SAMPLES

Zera

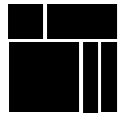
Style Code	9826
Product Construction	Tapestry Tufted Patterned Textured Tip Sheared
Yarn System	100% Recycled Solution Dyed Nylon
Machine Gauge	1/10
Pile Thickness	5.0 ± 0.5mm
Total Thickness	9.0 ± 0.5mm
Tile Size	50 x 50cm
ACCS Grading	Commercial Extra Heavy Duty & Stairs
Lifetime Antimicrobial	Intersept®
Soil / Stain Protection	Protekt ² ®

Installation Methods



BROWSE IMAGES
ORDER SAMPLES

Why Our Modular Flooring?



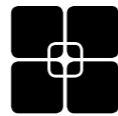
Modular Flooring

Performance and flexibility. Interface's standard backing systems set the industry standard for modular performance. Tiles stay on the floor with no upcurl, no tapping and no rippling effect, yet are easy to selectively replace. Our modular carpet is easier to handle than bulky roll carpet and produces an average of just 2-5% waste compared to roll carpet's average of 15%. And it installs seamlessly with our LVT, no transition strips needed.



ReEntry

At Interface, an *end of life solution* of our products is a reality. ReEntry is our innovative programme to reclaim materials used in our product. Taking back our product at end of life is a service we provide our customers to ensure that none of the products they use will end up in landfill. Whether it is recycling into new product or re-purposing, we see our customer's waste as an opportunity for new product life.



TacTiles®

No glue installation. Our revolutionary TacTiles installation system eliminates the need for glue, adhering tiles securely together to form a floor that "floats" for greater flexibility, easier replacement and long-term performance. The result? Less mess, less waste and virtually no VOCs, not to mention an environmental footprint that is over 90% lower than that of traditional glue adhesives.



Intersept®

Mold protection. Our proprietary preservative, Intersept, protects our modular carpet against mould growth and odour-causing bacteria—guaranteed. Intersept treated carpet, with proper maintenance, shows no mould or bacterial growth when tested as per the ASTM E2471 Standard Test Method. Intersept is EPA-approved for safe use in carpet, water insoluble and contains no halogens, heavy metals, phenols or formaldehyde.



Protekt²®

Stain protection. The life and performance of your flooring is extended with Protekt², our patented stain resistant protection. Protekt² uses advanced technology to provide a lasting barrier against permanent soiling and staining, which simplifies the cleaning process and enhances the longevity of your carpet. Protekt² is product specific, please refer to individual product specifications for details.



Health Product Declaration (HPD) –

A transparency tool for evaluating whether a product supports Green Chemistry. As part of our work on Health and Materials, Interface continuously reduces the environmental and health impacts of our products through elimination of materials of concern.



15-Year Warranty

Interface products are warranted for 15 years against excessive surface wear, edge ravel, backing separation, shrinking, stretching and static electricity even under castor chair conditions.



Local Manufacturing

We combine local responsiveness with a global experience. Being part of the same communities as our customers, we foster collaborative, committed, and productive relationships. Our carpet tiles are manufactured in Australia and China, contributing to local economies and the environment.

All Interface manufacturing facilities in the Asia Pacific region maintain registration to ISO 9001 Quality Management Systems and ISO 14001 Environmental Management Systems.

Third Party Certifications



Environmental Product Declaration (EPD)

The Environmental Product Declaration (EPD) is a third party verified environmental certification classified as Type III that quantifies and verifies the lifecycle impacts of products and goods according to the International Standards Organization (ISO) 14025, 14040, 14044 and EN 15804. EPDs help customers that are environmentally driven to evaluate the performance of a product and to make the best decision when choosing a product. Interface EPDs can be found on interface.com.



Global GreenTag GreenRate - Level A

Global GreenTag's GreenRate certification is a product rating system recognised by the Green Building Council of Australia and Green Building Council of New Zealand. Its assessment scheme aligns to the Green Star® Responsible Products program. All Interface products are certified "Level A".



Best Practice Guidelines for PVC

Our product proudly holds the Best Environmental Practice (BEP) PVC certification, a recognition of compliance with stringent environmental and social criteria in PVC manufacturing. This certification is a key contributor to Green Star certification, aligning with the GBCA's Responsible Products Framework. Our commitment to BEP guidelines demonstrates our dedication to environmental responsibility and product excellence.



Singapore Green Building Product (SGBP)

The SGBP certification is designed to evaluate and certify building products that meet specific sustainability and environmental performance criteria. The certification scheme helps building professionals identify products that are sustainable and more carbon efficient. Interface carpet tile products are certified "Leader" and LVT products are at "Excellent" Level.



NSF Certification

NSF International develops public health standards and certification programs that help protect the world's food, water, consumer products and environment. Interface carpet tile products are certified "Gold".



CRI Green Label Plus

The Carpet and Rug Institute (CRI) Green Label Plus sets higher standards for indoor air quality and ensures that customers are purchasing the very lowest emitting products on the market. Interface Carpet Tiles and TacTiles have fulfilled the requirements for this certification.

Do more on interface.com

- Browse products, save and share favourites
- See images of products in a variety of room scenes
- Browse floor designs, change colours, upload your own image, download and share
- Get full specifications, sustainability certifications and more
- Sign up to get the latest information on Interface products and news

Our EPDs and certifications contribute credits towards Green Building Council's Green Star® Responsible Products program.

Green Star is the Green Building Council of Australia's sustainability rating system for the built environment. It is used to rate new and existing buildings, new fit-outs, and new precinct developments. The Green Building Council of Australia recognises Responsible Products that may contribute to a Green Star rating through its Responsible Credits.

We have tried our very best to accurately represent product colours. However, due to the nature of printed materials, colour of actual products may vary slightly. Please request a sample to see actual product colour.

Production specifications are subject to normal manufacturing tolerances and may be changed without notice. The visibility of joints may vary based on colour and pattern. Slight variation in colour among different production lots are normal and should be considered in the overall installation plan. Products covered by manufacturer's written warranty only. All other warranties, including without limitation any implied warranties of merchantability or fitness for particular purpose, are hereby disclaimed. Contact your representative for written warranty information.

www.interface.com

Australia

Interface Australia
local toll free: 1800 804 361

India

Interface India
tel: +91 76249 17934

South East Asia

Interface Asia
tel: +65 6478 1510

South Korea

Interface South Korea
tel: +82 2 555 1734

Japan

Interface Japan
tel: +81(0)3-6892-5513

Beijing

Interface China
tel: +86 10 6590 7810

Hong Kong

Interface China
tel: +852 2802 0838

Shanghai

Interface China
tel: +86 21 6340 3868

