

[www.interface.com](http://www.interface.com)

**United States Headquarters**

1503 Orchard Hill Road  
LaGrange, GA 30240  
1.800.336.0225 ext.56511

**Canadian Headquarters**

233 Lahr Drive  
Belleville, ON K8N 5S2  
1.800.267.2149 ext.52128

**Brazilian Headquarters**

Rua Surubim, 577 - Conjuntos  
73/74 7º Andar  
04571-050 - São Paulo - SP  
+ 55 11 2196 0900

**Latin American Headquarters**

Montes Urales # 415 Piso 6  
Col. Lomas de Chapultepec  
México City, D.F. 11000  
Mexico  
+ 52 55 6395 5100

CIM # IFS00766 2/2017



**Mission Zero®**

our promise to eliminate any  
negative impact our company  
may have on the environment  
by the year 2020.

# World WovenCollection SummerHouse

**Interface®**



Nostalgia is often triggered by the simplest things. World Woven One and Two assemble a set of styles that reminds us of classic fashion and upholstery textiles from our past.

SummerHouse, the latest addition to the collection, is a lighthearted pattern that recalls that fleeting bliss of easy summer days—picnics on plaid blankets and cotton curtains at a kitchen window.

SummerHouse Shades explores the light and dark values of this large-scale pattern in the same eight pure neutrals and Skinny Planks™ format of the World Woven Collection—the perfect addition of contrast in scale and companions in color. SummerHouse Brights vibrantly colors that same pattern in four distinct combinations in 50cm x 50cm squares, transforming it into something like a vintage Madras plaid, where the best part has always been that no two are ever exactly alike.

With a strong foundation of neutrals and an expanding offering of color, pattern and texture, the World Woven Collection, made from 100% recycled content nylon, presents endless possibilities for the memorable spaces you will design.









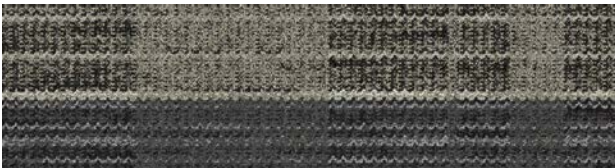
SummerHouse Shades Colorline



105482 FLANNEL



105483 BLACK



105484 CHARCOAL



105485 LINEN



105486 RAFFIA



105487 SISAL



105488 NATURAL



105489 BROWN

Specifications **i2**

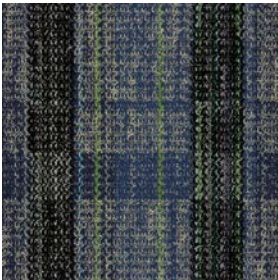
Modular, 25cm x 1m	163190AK00
Backing System	GlasBac® Tile
Yarn Manufacturer	Aquafil
Yarn System	100% Recycled Content Type 6 Nylon
Color System	100% Solution Dyed
Construction	Tufted Textured Loop
Preservative Protection	Intersept®
Soil/Stain Protection	Protekt <sup>2</sup> ®
Pile Thickness	0.083 in., 2.1 mm
Pile Density	9,976
Total Recycled Content	77%
Indoor Air Quality	CRI Green Label Plus #GLP0820



CARPET PRODUCT SUMMERHOUSE SHADES COLOR 105482 FLANNEL INSTALLED ASHLAR  
LVT PRODUCT LEVEL SET™ | NATURAL STONES COLOR A00103 COOL IMPALA MARBLE INSTALLED QUARTER-TURN



SummerHouse Brights Colorline



105491 COBALT/BLACK



105493 KIWI/LINEN



105494 TOPAZ/RAFFIA



105496 PAPRIKA/NATURAL

Specifications **i2**

Modular, 50cm x 50cm	1632002500
Backing System	GlasBac® Tile
Yarn Manufacturer	Aquafil
Yarn System	100% Recycled Content Type 6 Nylon
Color System	100% Solution Dyed
Construction	Tufted Textured Loop
Preservative Protection	Intersept®
Soil/Stain Protection	Protekt <sup>2</sup> ®
Pile Thickness	0.083 in., 2.1 mm
Pile Density	9,976
Total Recycled Content	77%
Indoor Air Quality	CRI Green Label Plus #GLP0820



CARPET PRODUCT SUMMERHOUSE BRIGHTS COLOR 105493 KIWI/LINEN  
LVT PRODUCT LEVEL SET 1, NATURAL WOODGRAINS COLOR A00206 WINTER GREY, INSTALLED ASHLAR



Why Our Modular Carpet?



Modular Carpet Tile

*Performance and Flexibility.* Interface's standard backing systems set the industry standard for modular performance. Tiles stay on the floor with no upcurl, no tapping and no ripplingeffect, yet are easy to selectively replace. Our modular carpet is also easier to handle, install and maintain than bulky roll carpet. And, it installs with less waste so you save time and money—3-4% for typical modular carpet compared to an average waste factor of 14% for traditional roll carpet.

Samples

Order samples at [www.interface.com](http://www.interface.com). You'll receive email order confirmations, 24/7 access to order status and more. Not near a computer? You can also request samples by calling one of the numbers below.

United States	Canada
1.877.605.1500	1.866.398.3192
Brazil	Latin America
+ 55 11 2196 0900	+ 52 55 6395 5100



Cool Carpet™

*The Low Carbon Option.* Help stop climate change. ALL Interface modular carpet sold in North America is third party verified climate neutral Cool Carpet. We start by using low-carbon materials and manufacturing processes, then Cool Carpet zeros out all remaining greenhouse gas (GHG) emissions associated with the entire lifecycle of your carpet, from raw material extraction through use and recycling. And climate neutral Cool Carpet may be eligible for a USGBC or CaGBC LEED Innovation Credit.

[www.interface.com](http://www.interface.com)

- Register at [www.interface.com](http://www.interface.com) to:
- Browse products and order samples
  - View carpet in a variety of room scenes
  - Browse floor designs, change colors, view as a grid or in a room, download and share
  - Use our LEED Calculator
  - Check order status and inventory availability
  - Sign up to get the latest information on Interface products and news



TacTiles®

*No Glue Installation.* Our revolutionary TacTiles installation system eliminates the need for glue, adhering tiles securely together to form a floor that “floats” for greater flexibility, easier replacement and long-term performance. The result? Less mess, less waste and virtually no VOCs, not to mention an environmental footprint that is over 90% lower than that of traditional glue adhesives.

InterCircle™ Sample Return

Help us close the loop on the carpet sampling process. Through our InterCircle Sample Return program, sample materials stay out of the landfill and are re-used as samples until it is time to recycle them into new carpet. By reducing sample production material and diverting old materials from the landfill, we can reduce our overall environmental footprint.

Call 1.877.605.1500 (U.S.) or 1.866.398.3192 (Canada) to order a sample return bag with a prepaid return label.



Intersept®

*Mold Protection.* Our proprietary preservative, Intersept, protects our modular carpet against mold growth and odor-causing bacteria—guaranteed. Intersept treated carpet, with proper maintenance, shows no mold or bacterial growth when tested per the ASTM E2471 Standard Test Method. Intersept is EPA approved for safe use in carpet, water insoluble and contains no halogens, heavy metals, phenols or formaldehyde.



ReEntry®

*Recyclable is Now a Reality.* Through our ReEntry program and partnerships with our fiber suppliers and recycling centers throughout North America, separated Type 6 and 6,6 nylon are recycled into new 6 and 6,6 nylon, while separated GlasBac® and similar competitor backings are recycled into GlasBac®RE non-virgin PVC backing using our Cool Blue™ technology. The result? Products with up to 81% total recycled content, including as much as 35% post-consumer content.



Sustainable Choice

*Environmental Responsibility.* Many Interface products carry the GreenCircle Certified Environmental Facts label, which has verified that standard Interface products offer a minimum of 66% and 80% total recycled content when backed with GlasBac® and GlasBacRE backing respectively, using 99% renewable energy.

In addition, more than 99% of our products globally have a published EPD (Environmental Product Declaration), which evaluates consistent factors based on full life cycle assessment (LCA). And, all Interface products with GlasBacRE backing meet the Platinum level of the NSF/ ANSI 140 Sustainable Assessment for Carpet. GlasBac or NexStep® backed products meet the Gold level. All may contribute toward a USGBC or CaGBC LEED Innovation Credit.

Third Party Certification



**Cool Carpet** – Our third party verified carbon offset program zeroes out all greenhouse gas (GHG) emissions associated with the entire lifecycle of your carpet.



**Environmental Product Declaration (EPD)** – A statement of product ingredients and environmental impacts over the entire life cycle of a product. A comprehensive life cycle assessment (LCA) is performed to ISO standards to develop an EPD, after which both the EPD and LCA must be third party verified.



**Sustainable Assessment for Carpet** – The only carpet sustainability standard in North America that evaluates the environmental impact of carpet for its entire lifecycle.



**CRI Green Label Plus** – An independent testing program that identifies carpet and adhesives with very low emissions of VOCs to help improve indoor air quality.

All product specifications reflect averages derived from product sample testing, are subject to normal manufacturing and testing tolerances and inherent pattern variances, and may be changed without notice. For more information about these and other important attributes of the product(s) described herein, including recycled content and product warranty information, please see [www.interface.com/disclaimer](http://www.interface.com/disclaimer).



Printed on 50% post consumer waste (PCW) fiber manufactured using wind power.

We have tried our very best to accurately represent product colors. However, due to the nature of printed materials, color of actual products may vary slightly. Please request a sample to see actual product color.