

interface.com

United States Headquarters

1280 West Peachtree Street NW
Atlanta, GA 30309
1.800.634.6032

Canadian Headquarters

233 Lahr Drive
Belleville, ON K8N 5S2
1.800.267.2149 ext.52128

Brazilian Headquarters

Av. Das Nações Unidas 14261
25 andar, sala 25 -122, Brooklin Paulista
São Paulo SP 04578 - 000
Brasil
+ 5511.2196.0900

Latin American Headquarters

Montes Urales # 415 Piso 6
Lomas de Chapultepec
Miguel Hidalgo, CDMX
11000 Mexico
+ 52.55.2791.6812

CIM # IFS00900 05/2021



Climate change is undeniable. And reversible. Our mission is to prove it.
Join the #ClimateTakeBack and help create a climate fit for life.

Suite Serenity Collection

Interface®

Suite Serenity™ Collection

Living the Suite Life

As people embrace community living over traditional housing, their expectations of quality and design are elevated. Suite Serenity melds the aesthetics of traditional and modern, resulting in a sophisticated, versatile carpet tile collection that integrates with our luxury vinyl tiles for a seamless flow. Suite Serenity's warm neutrals and soft color accents create an inviting, resort-like atmosphere that whispers "Home Suite Home."







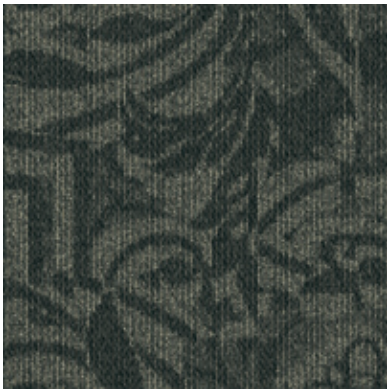
Villa Scroll™ Colorline



106671 TRANQUIL



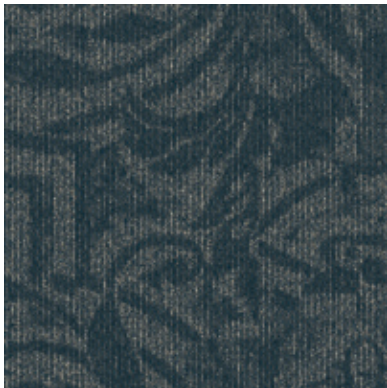
106672 REPOSE



106673 BLISS



106674 ABODE



106675 REFRESH



106676 UNWIND

Specifications

Modular, 50cm x 50cm	125730250G
Backing System	CQuest™GB
Yarn Manufacturer	Aquafil
Yarn System	100% Recycled Content Nylon
Color System	100% Solution Dyed
Construction	Tufted Cut & Loop
Preservative Protection	Intersept®
Soil/Stain Protection	Protekt2™
Pile Thickness	0.094 in., 2.4 mm
Pile Density	7,277
Total Recycled Content	83%
Indoor Air Quality	CRI Green Label Plus #GLP0820

Installation Methods



ASHLAR



BRICK



BROWSE IMAGES
ORDER SAMPLES

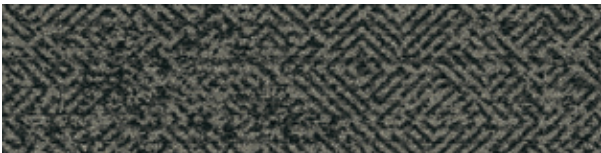
Diamond Dream™ Colorline



106659 TRANQUIL



106660 REPOSE



106661 BLISS



106662 ABODE



106663 REFRESH



106664 UNWIND

Specifications

Modular, 25cm x 1m	125720AK0G
Backing System	CQuest™GB
Yarn Manufacturer	Aquafil
Yarn System	100% Recycled Content Nylon
Color System	100% Solution Dyed
Construction	Tufted Cut & Loop
Preservative Protection	Intersept®
Soil/Stain Protection	Protekt2™
Pile Thickness	0.086 in., 2.2 mm
Pile Density	7,535
Total Recycled Content	83%
Indoor Air Quality	CRI Green Label Plus #GLP0820

Installation Methods



ASHLAR



HERRINGBONE



BROWSE IMAGES
ORDER SAMPLES



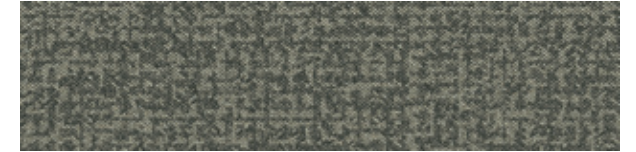
PRODUCT DIAMOND DREAM COLOR 106661 BLISS INSTALLED HERRINGBONE



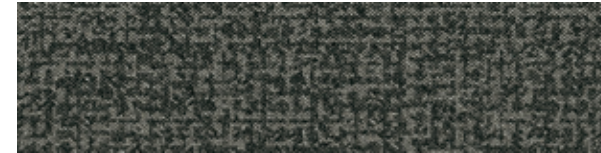
Mirano™ Colorline



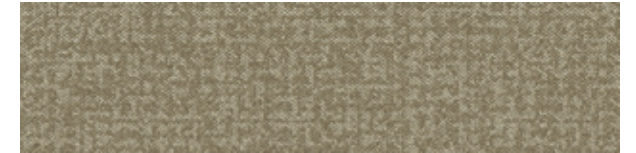
106665 TRANQUIL



106666 REPOSE



106667 BLISS



106668 ABODE



106669 REFRESH



106670 UNWIND

Specifications

Modular, 25cm x 1m	163300AK0G
Backing System	CQuest™GB
Yarn Manufacturer	Aquafil
Yarn System	100% Recycled Content Nylon
Color System	100% Solution Dyed
Construction	Tufted Textured Loop
Preservative Protection	Intersept®
Soil/Stain Protection	Protekt2™
Pile Thickness	0.079 in., 2 mm
Pile Density	8,658
Total Recycled Content	83%
Indoor Air Quality	CRI Green Label Plus #GLP0820

Installation Methods



ASHLAR

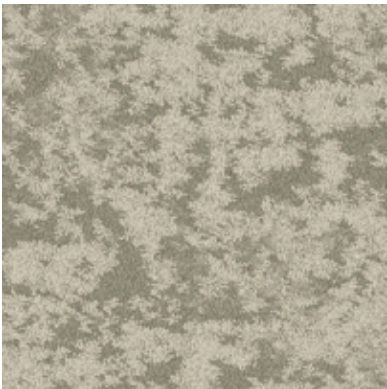


HERRINGBONE

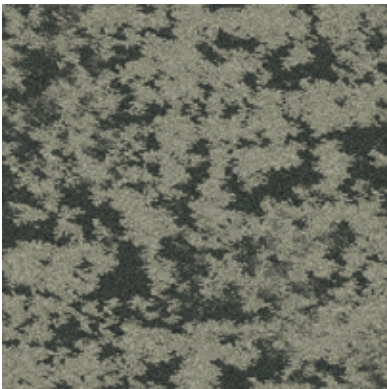


BROWSE IMAGES
ORDER SAMPLES

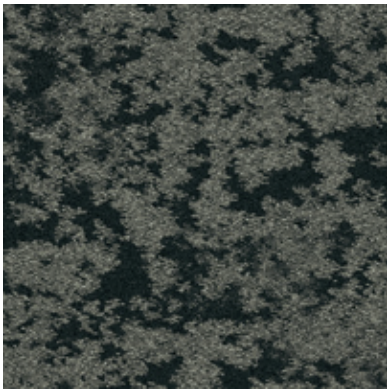
Meadowland™ Colorline



106653 TRANQUIL



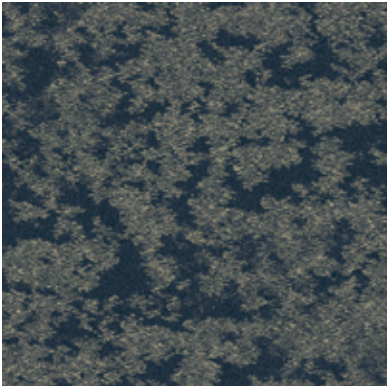
106654 REPOSE



106655 BLISS



106656 ABODE



106657 REFRESH



106658 UNWIND

Specifications

Modular, 50cm x 50cm	161830250G
Backing System	CQuest™GB
Yarn Manufacturer	Aquafil
Yarn System	100% Recycled Content Nylon
Color System	100% Solution Dyed
Construction	Tufted Sheared
Preservative Protection	Intersept®
Soil/Stain Protection	Protekt2™
Pile Thickness	0.079 in., 2 mm
Pile Density	10,025
Total Recycled Content	84%
Indoor Air Quality	CRI Green Label Plus #GLP0820

Installation Methods



ASHLAR



BRICK



BROWSE IMAGES
ORDER SAMPLES

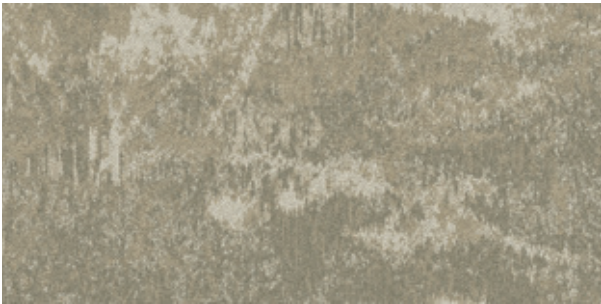
PRODUCT MEADOWLAND COLOR 106658 UNWIND INSTALLED ASHLAR



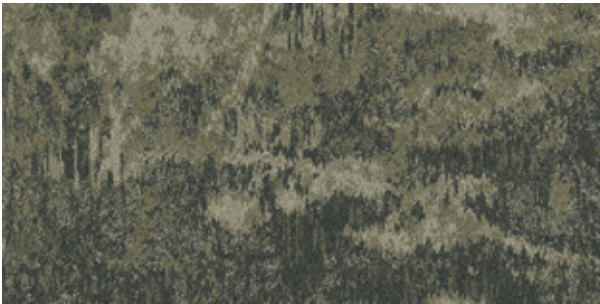
interface.com

CARPET PRODUCT BOUQUET COLOR 106650 ADOBE
LVT PRODUCT LEVEL SET | NATURAL WOODGRAINS COLOR A00202 MADAGASCAR
INSTALLED ASHLAR

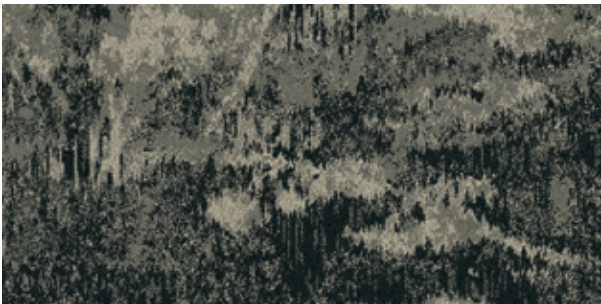
Bouquet™ Colorline



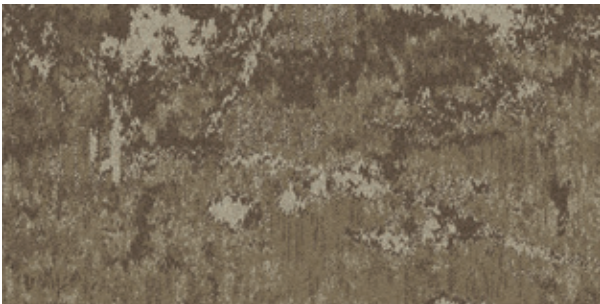
106647 TRANQUIL



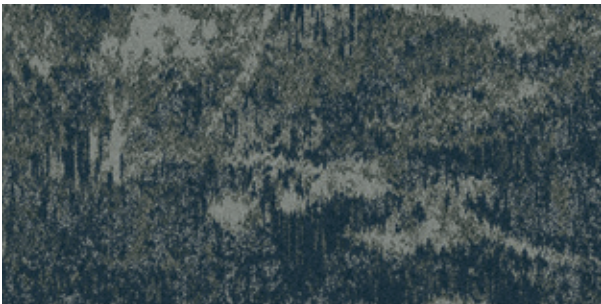
106648 REPOSE



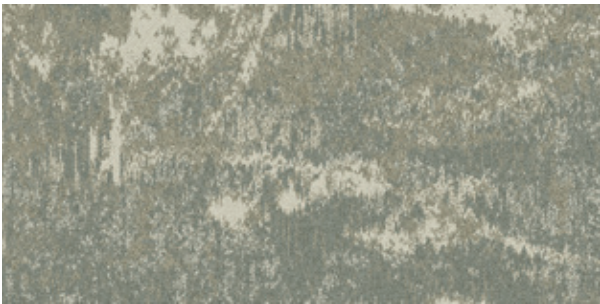
106649 BLISS



106650 ADOBE



106651 REFRESH



106652 UNWIND

Specifications

Modular, 50cm x 1m	161810AB0G
Backing System	CQuest™GB
Yarn Manufacturer	Aquafil
Yarn System	100% Recycled Content Nylon
Color System	100% Solution Dyed
Construction	Tufted Pattern Loop
Preservative Protection	Intersept®
Soil/Stain Protection	Protekt2™
Pile Thickness	0.118 in., 3 mm
Pile Density	8,542
Total Recycled Content	84%
Indoor Air Quality	CRI Green Label Plus #GLP0820

Installation Methods



ASHLAR



HERRINGBONE



BROWSE IMAGES
ORDER SAMPLES



interface.com

PRODUCT BOUQUET COLOR 106651 REFRESH
PRODUCT MIRANO COLOR 106669 REFRESH INSTALLED ASHLAR



CARPET PRODUCT DIAMOND DREAM COLOR 106660 REPOSE
LVT PRODUCT BRUSHED LINES™ COLOR A01608 SANDALWOOD INSTALLED ASHLAR

Why Our Modular Flooring?



Modular Flooring
Performance and flexibility.
Interface's standard backing systems set the industry standard for modular performance. Tiles stay on the floor with no upcurl, no tapping and no rippling effect, yet are easy to selectively replace. Our modular carpet is easier to handle than bulky roll carpet and produces an average of just 3-4% waste compared to roll carpet's average of 14%. And it installs seamlessly with our LVT, no transition strips needed.



TacTiles™
No glue installation. Our revolutionary TacTiles installation system eliminates the need for glue, adhering tiles securely together to form a floor that “floats” for greater flexibility, easier replacement and long-term performance. The result? Less mess, less waste and virtually no VOCs, not to mention an environmental footprint that is over 90% lower than that of traditional glue adhesives. TacTiles are approved for use on GlasBac™, GlasBacRE, CQuest™GB, Graphlar™ and Graphlex™.



Intersept®
Mold protection. Our proprietary preservative, Intersept, protects our modular carpet against mold growth and odor-causing bacteria—guaranteed. Intersept treated carpet, with proper maintenance, shows no mold or bacterial growth when tested per the ASTM E2471 Standard Test Method. Intersept is EPA approved for safe use in carpet, water insoluble and contains no halogens, heavy metals, phenols or formaldehyde. Intersept is standard in Interface carpet tile products backed with GlasBac, GlasBacRE, CQuestGB, ReadyBac™, and CushionBac Renew™.



ReEntry™
Keep flooring out of landfills. Through our ReEntry program, we reclaim our carpet tile and Sound Choice™ LVT. Vinyl backed carpet tile is recycled into new CQuest™GB carpet tile backing. The result? Carpet tile products with up to 85% total recycled content, including as much as 25% post-consumer content.



Sustainability Transparency
Transparency and certified sustainability leadership come standard on Interface products, including published ingredients in HPDs (Health Product Declarations) and published EPDs (Environmental Product Declarations), which are based on full life cycle assessment (LCA). And, Interface carpet products are certified to the NSF 140 Sustainable Carpet Assessment Standard. Additionally, Interface flooring and recommended adhesives are 3rd party certified for low VOC emissions in compliance with California Department of Public Health (CDPH) Standard Method v1.2–2017. Carpet products made in our US facilities are made with 99% renewable energy.



Third Party Verification
The flooring products that we sell, including carpet tile, are carbon neutral across their full product life cycle through our third party verified Carbon Neutral Floors™ program. To find out more, visit interface.com/carbonneutral



Environmental Product Declaration (EPD) –
A statement of product ingredients and environmental impacts over the entire life cycle of a product. A comprehensive life cycle assessment (LCA) is performed to ISO standards to develop an EPD, after which both the EPD and LCA must be third party verified.



Sustainable Assessment for Carpet – The only carpet sustainability standard in North America that evaluates the environmental impact of carpet for its entire lifecycle.



CRI Green Label Plus – An independent testing program that identifies carpet and adhesives with very low emissions of VOCs to help improve indoor air quality.



Printed on 50% post consumer waste (PCW) fiber manufactured using wind power.

We have tried our very best to accurately represent product colors. However, due to the nature of printed materials, color of actual products may vary slightly. Please request a sample to see actual product color.

Samples
Order samples at interface.com. You'll receive email order confirmations, 24/7 access to order status and more. Not near a computer? You can also request samples by calling one of the numbers below.

United States 1.877.605.1500	Canada 1.866.398.3192
Brazil + 5511.2196.0900	Latin America + 52.55.6395.5100

interface.com
Register at interface.com to:

- Browse products and order samples
- View carpet in a variety of room scenes
- Browse floor designs, change colors, view as a grid or in a room, download and share
- Check order status and inventory availability
- Sign up to get the latest information on Interface products and news

InterCircle Sample Return
Help us close the loop on the carpet sampling process. Through our InterCircle Sample Return program, sample materials stay out of the landfill and are re-used as samples until it is time to recycle them into new carpet. By reducing sample production material and diverting old materials from the landfill, we can reduce our overall environmental footprint.

Call 1.877.605.1500 (U.S.) or 1.866.398.3192 (Canada) to order a sample return bag with a prepaid return label.

All product specifications reflect averages derived from product sample testing, are subject to normal manufacturing and testing tolerances and inherent pattern variances, and may be changed without notice. For more information about these and other important attributes of the product(s) described herein, including recycled content and product warranty information, please see interface.com/disclaimer.