

A person is shown in silhouette, crouching on a sidewalk. In the background, a wall is covered in vibrant, multi-colored graffiti. The scene is lit with a strong, cool-toned light, creating a high-contrast, urban atmosphere.

Street Smart Collection

Interface®

Street Smart™ Collection

It takes a certain savvy to really read the room, to know when to be bold or when to be reserved. We call it being street smart, which is also the name of our latest collection. The Street Smart Collection is a pairing of two styles that can easily handle the kinds of situations that urban life presents.

Street Smart's eight tonal neutrals lead the way with eight more colourful companions to brighten the possibilities. It's offered in our Skinny Planks™, which means it can move across the floor in really interesting ways. With over 70% total recycled content when specifying the GlasBac®RE backing option, Street Smart might just be the smartest choice you make today.



Product Street Smart SS217 **Colour** Lane
Product Street Smart SS218 **Colour** Lane/Verde Primavera **Installed** Ashlar





Product Street Smart SS217 **Colour** Alley **Product** Street Smart SS218
Colour Alley/Rojo **Installed** Herringbone



www.interface.com

Product Street Smart SS217 **Colour** Walkway **Installed** Ashlar
Product Viva Colores™ **Colour** Amarillo **Installed** Monolithic

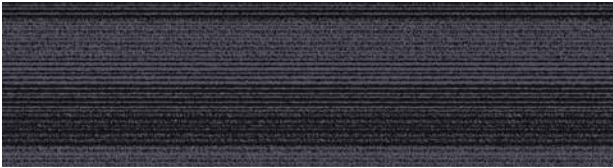


Product Street Smart SS217 **Colour** Crossroad
Product Street Smart SS218 **Colour** Crossroad/Cielo **Installed** Ashlar



Product Street Smart SS217 Colour Alley Installed Ashlar

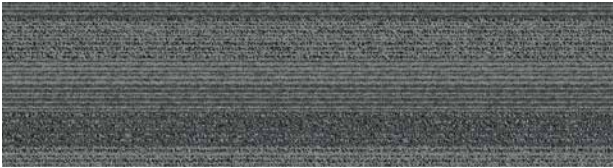
Street Smart SS217 Colourline



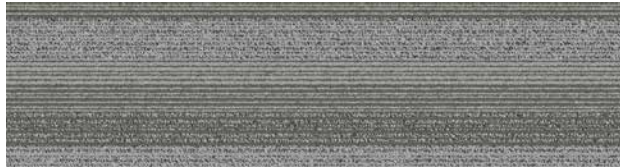
8009-001-000 Passageway



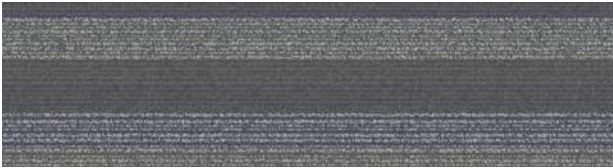
8009-002-000 Lane



8009-003-000 Alley



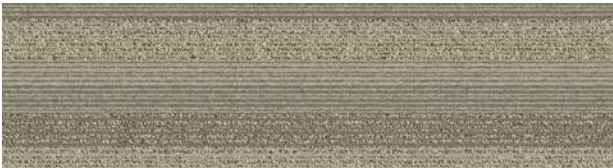
8009-004-000 Crossroad



8009-005-000 Sidewalk



8009-006-000 Path



8009-007-000 Walkway

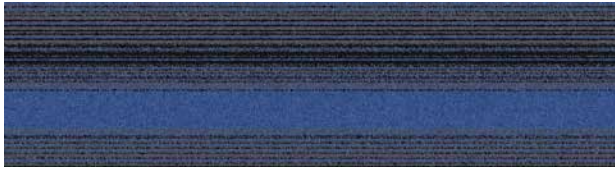


8009-008-000 Back Street

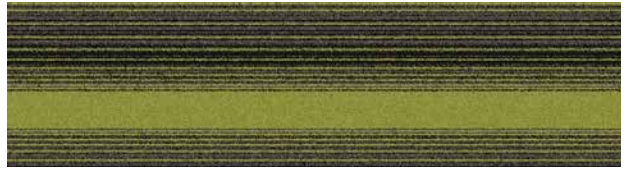


Product Street Smart SS218 **Colour** Sidewalk/Naranja **Installed** Ashlar

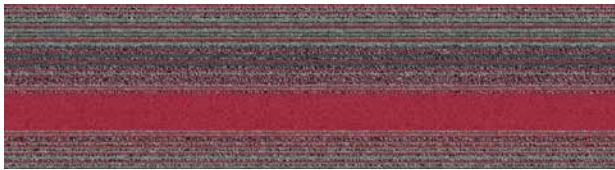
Street Smart SS218 Colourline



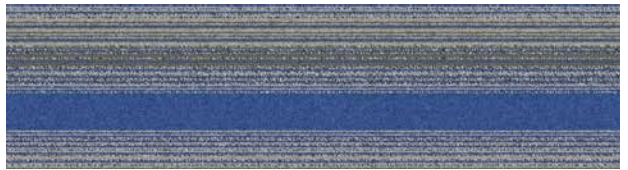
8010-033-000 Passageway/Cielo



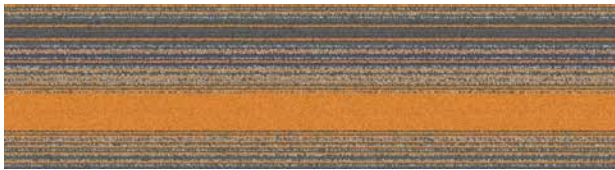
8010-002-000 Lane/Verde Primavera



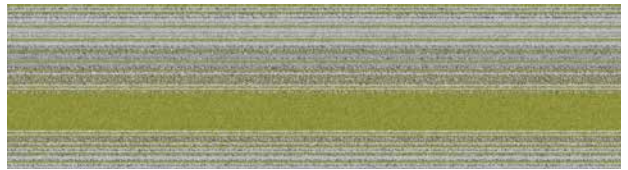
8010-003-000 Alley/Rojo



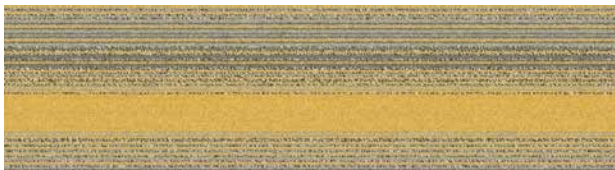
8010-034-000 Crossroad/Cielo



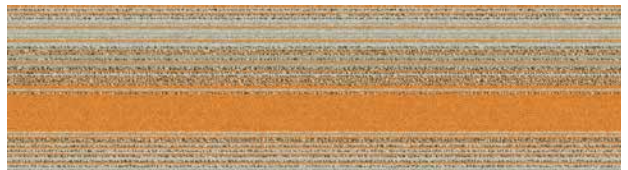
8010-005-000 Sidewalk/Naranja



8010-006-000 Path/Verde Primavera

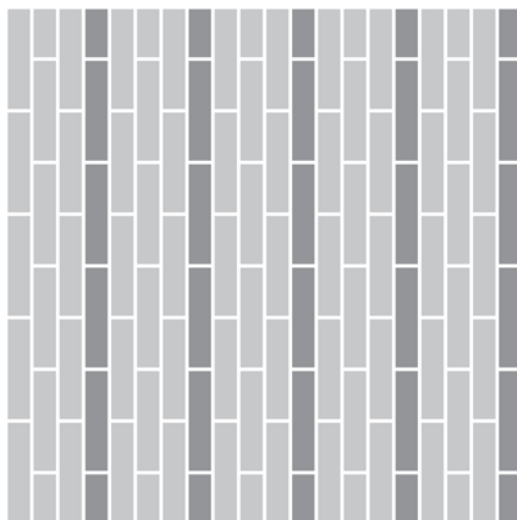


8010-035-000 Walkway/Amarillo



8010-008-000 Back Street/Naranja

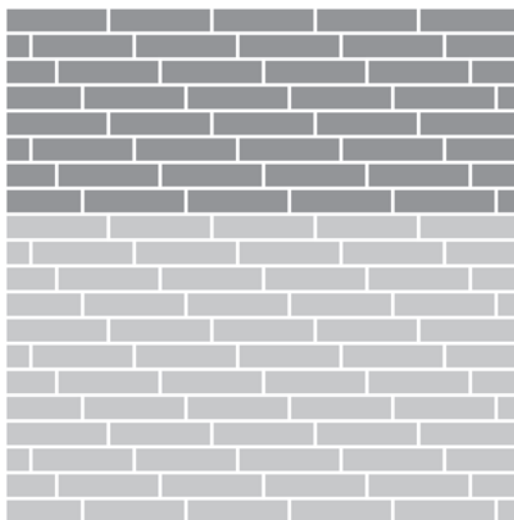
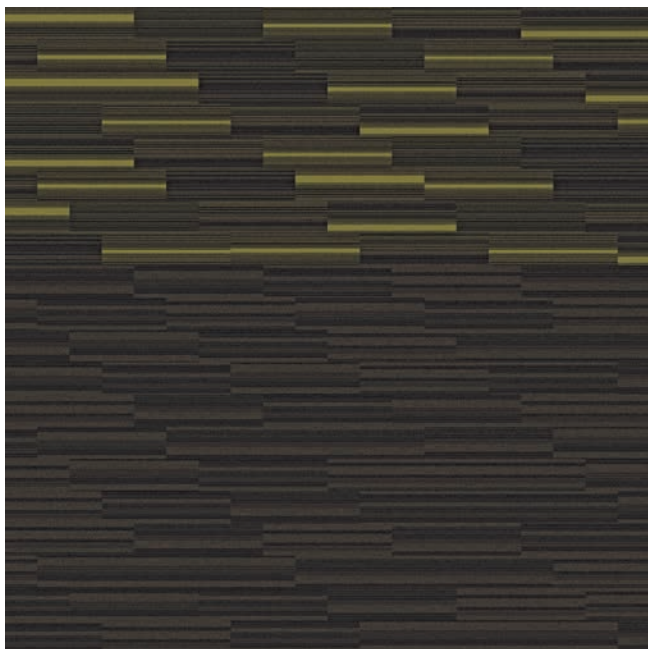
Design Ideas Below are floor layouts showing how to create the design ideas shared in several of the images featured in this brochure.



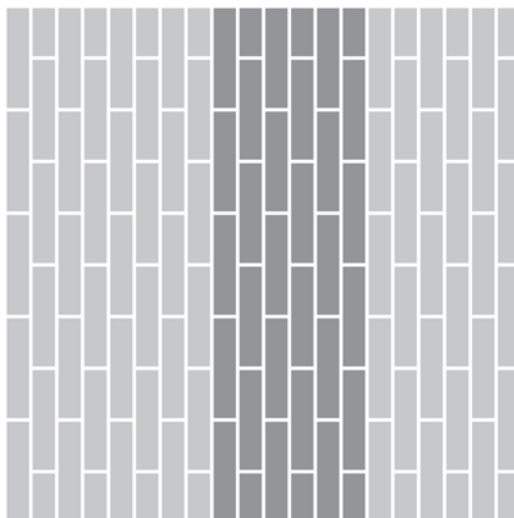
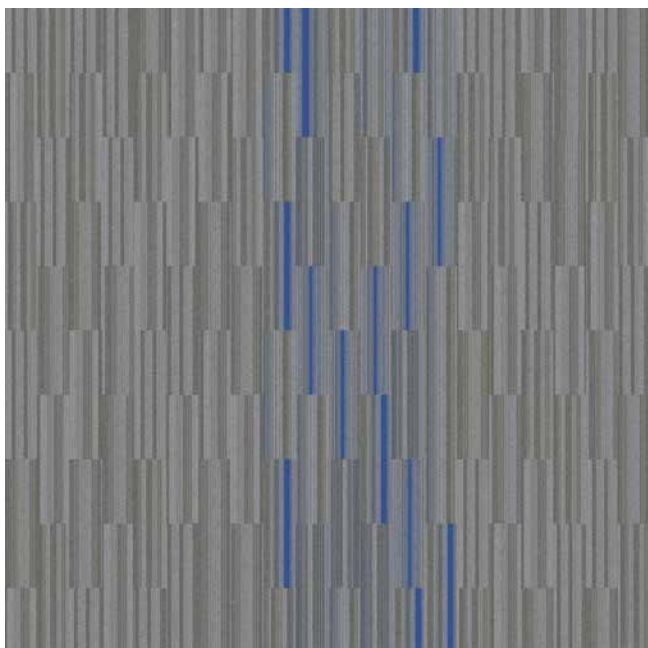
Product Street Smart SS217 **Colour** Path
Product Street Smart SS218 **Colour** Path/Verde Primavera **Installed** Ashlar



Product Street Smart SS217 **Colour** Alley
Product Street Smart SS218 **Colour** Alley/Rojo **Installed** Herringbone



Product Street Smart SS217 **Colour** Lane
Product Street Smart SS218 **Colour** Lane/Verde Primavera **Installed** Ashlar



Product Street Smart SS217 **Colour** Crossroad
Product Street Smart SS218 **Colour** Crossroad/Cielo **Installed** Ashlar



Product Street Smart SS217 **Colour** Path
Product Street Smart SS218 **Colour** Path/Verde Primavera **Installed** Ashlar

Specifications

Street Smart SS217™

Style Code	8009 Pattern 000
Product Definition	Tufted Loop Pile
Yarn/Fibre	BCF Nylon Type 6.6 – Recycled Nylon
Colour System	100% Solution Dyed
Machine Gauge	1/10
Pile Thickness	2.0mm +/- 0.5mm
Total Thickness	5.0mm +/- 0.5mm
Tile Size	25cm x 100cm
Area of Use	Commercial – Heavy Use
Lifetime Antimicrobial	Intersept®
Soil/Stain Protection	Protekt ² ®
Total Recycled Content	GlasBac® 42% to 57% Total Recycled Content Glasbac®RE 62% to 74% Total Recycled Content
Installation Methods	Ashlar, Herringbone



Ashlar



Herringbone

Street Smart SS218™

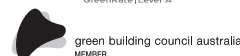
Style Code	8010 Pattern 000
Product Definition	Tufted Loop Pile
Yarn/Fibre	BCF Nylon Type 6.6 – Recycled Nylon
Colour System	100% Solution Dyed
Machine Gauge	1/10
Pile Thickness	2.0mm +/- 0.5mm
Total Thickness	5.0mm +/- 0.5mm
Tile Size	25cm x 100cm
Area of Use	Commercial – Heavy Use
Lifetime Antimicrobial	Intersept®
Soil/Stain Protection	Protekt ² ®
Total Recycled Content	GlasBac® 42% to 57% Total Recycled Content Glasbac®RE 62% to 74% Total Recycled Content
Installation Methods	Ashlar, Herringbone



Ashlar



Herringbone



CoolCarpet™
Intersept®

Production specifications are subject to normal manufacturing tolerances and may be changed without notice. Slight variation in colour among different production lots are normal and should be considered in the overall installation plan. Products covered by manufacturer's written warranty only. All other warranties, including without limitation any implied warranties of merchantability or fitness for particular purpose, are hereby disclaimed. Contact your representative for written warranty information. Recycled content calculations are based on historical averages by total weight of the product for backings. Yarn/Fibre recycled content calculation excludes backing. We update our recycled content information and other environmental data regularly to reflect changes and advancements in our technology.

*Cool Carpet is not a standard option in Australia and New Zealand.

As part of Interface's Mission Zero promise to eliminate any negative impact on the environment by 2020, we always consider the environment impact of every creative, manufacturing and building decision. This sample book is printed on recycled paper and with soy based ink. Twenty four virgin trees were saved from our use of 1725kg of recycled paper in the production of 5000 sample books. Energy intensity also decreased and greenhouse gases were reduced. The other reductions came from waste water and solid waste. Through our sample reclamation program, we help keep sample materials out of landfill by re-using them until it is time to recycle these sample materials.

www.interface.com

South East Asia

Interface Asia
tel: 65-6478 1510
www.interface.com

South Korea

tel. 82-2-555 1734
www.interface.com

Japan

Interface Japan
tel: 81-3-5733 5211
www.interface.com

India

Interface India
tel: 91 80 30589350
www.interface.com

Beijing Studio

Interface China
tel: 86-10-6590 7810
www.interface.com.cn

Hongkong Studio

Interface China
tel: 852-2802 0838
www.interface.com.cn

Shanghai Studio

Interface China
tel: 86-21-6340 3868
www.interface.com.cn

Australia

Interface Australia
local toll free: 1800 008 101
www.interface.com

03/2017
SF0089T0



Mission Zero:
our promise to eliminate any
negative impact our company
may have on the environment
by the year 2020.