

Street Smart Collection

www.interface.com

United States Headquarters

1280 West Peachtree Street NW
Atlanta, GA 30309
1.800.634.6032

Canadian Headquarters

233 Lahr Drive
Belleville, ON K8N 5S2
1.800.267.2149 ext.2128

Brazilian Headquarters

Rua Surubim, 577 - Conjuntos
73/74 7º Andar
04571-050 - São Paulo - SP
+ 55 11 2196 0900

Latin American Headquarters

Montes Urales # 415 Piso 6
Col. Lomas de Chapultepec
México City, D.F. 11000
Mexico
+ 52 55 6395 5100

CIM # IFS00702 11/2019



Climate change is undeniable. And reversible. Our mission is to prove it.
Join the #ClimateTakeBack and help create a climate fit for life.

Interface®

Street Smart™ Collection

It takes a certain savvy to really read the room, to know when to be bold or when to be reserved. We call it being street smart, which is also the name of our latest collection. The Street Smart Collection is a pairing of two styles that can easily handle the kinds of situations that urban life presents.

Street Smart's eight tonal neutrals lead the way with eight more colorful companions to brighten the possibilities. It's offered in our Skinny Planks™, which means it can move across the floor in really interesting ways. With up to 70% total recycled content when specifying the GlasBac®RE backing option, Street Smart might just be the smartest choice you make today.

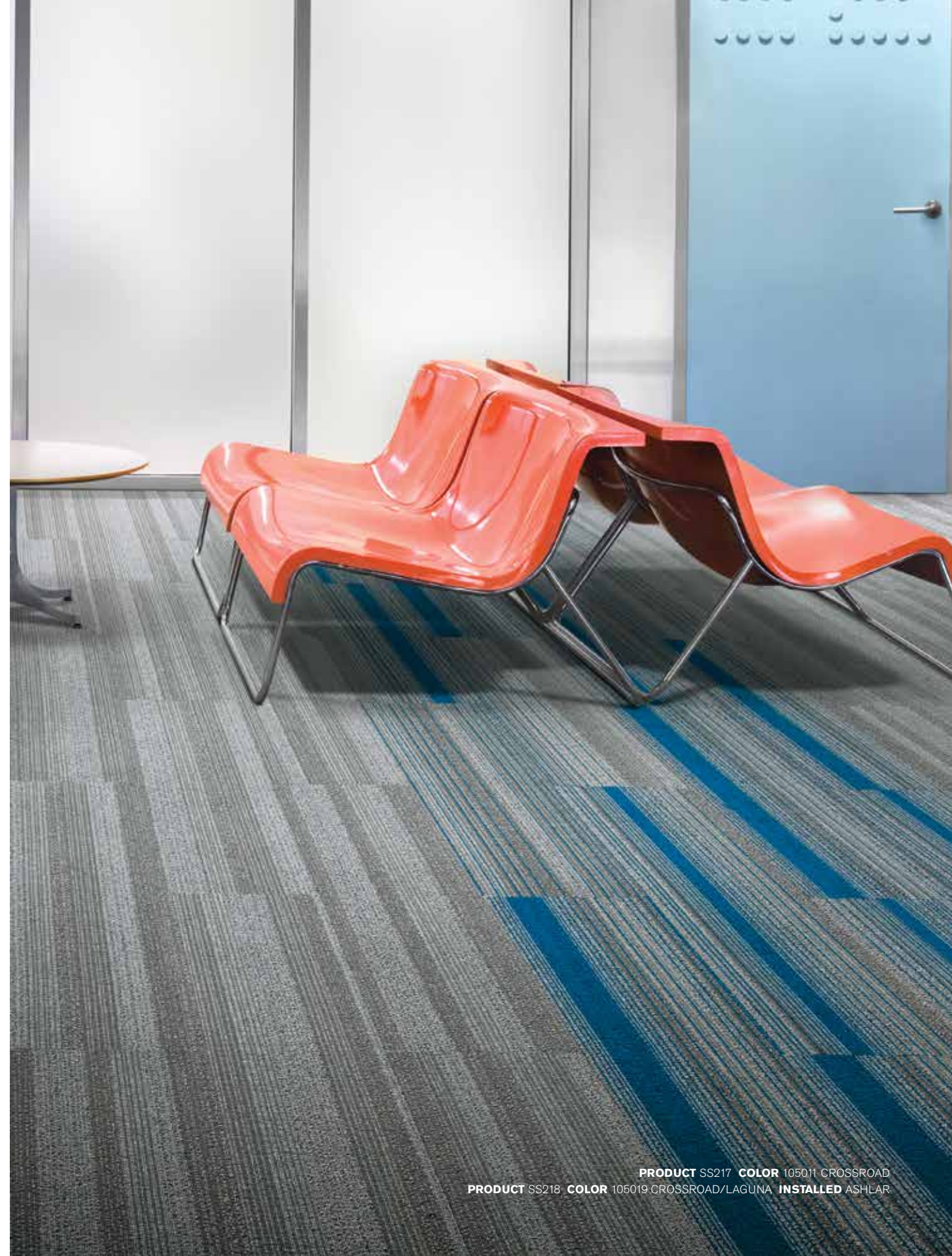






www.interface.com

PRODUCT SS217 COLOR 105012 SIDEWALK INSTALLED ASHLAR
PRODUCT VIVA COLORES™ COLOR 101142 LAGUNA INSTALLED MONOLITHIC



PRODUCT SS217 COLOR 105011 CROSSROAD
PRODUCT SS218 COLOR 105019 CROSSROAD/LAGUNA INSTALLED ASHLAR



PRODUCT SS217 COLOR 105010 ALLEY INSTALLED ASHLAR

SS217 Colorline



105008 PASSAGEWAY



105009 LANE



105010 ALLEY



105011 CROSSROAD



105012 SIDEWALK



105013 PATH



105014 WALKWAY



105015 BACK STREET

Specifications

Modular, 25cm x 1m	142640AK00
Backing System	GlasBac® Tile
Yarn Manufacturer	Universal
Yarn System	Post-Consumer Content Nylon
Color System	100% Solution Dyed
Construction	Tufted Pattern Loop
Lifetime Antimicrobial	Intersept®
Soil/Stain Protection	Protekt2®
Pile Thickness	0.062 in., 1.6 mm
Pile Density	9,290
Total Recycled Content	72%
Indoor Air Quality	CRI Green Label Plus #GLP0820





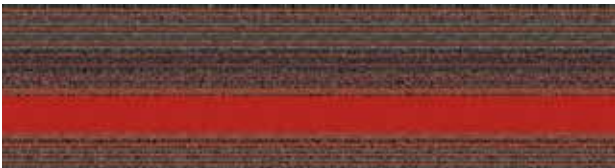
SS218 Colorline



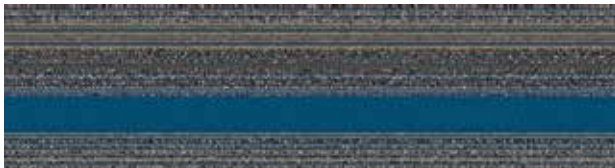
105016 PASSAGEWAY/LAGUNA



105017 LANE/VERDE PRIMAVERA



105018 ALLEY/ROJO



105019 CROSSROAD/LAGUNA



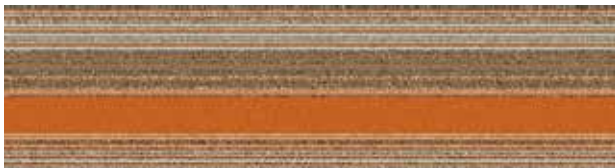
105020 SIDEWALK/NARANJA



105021 PATH/VERDE PRIMAVERA



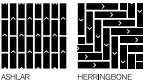
105022 WALKWAY/ROJO



105023 BACK STREET/NARANJA

Specifications

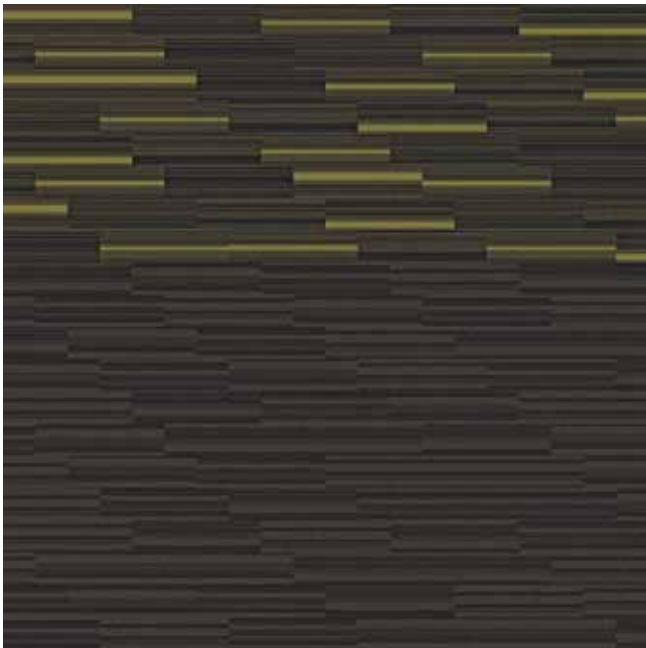
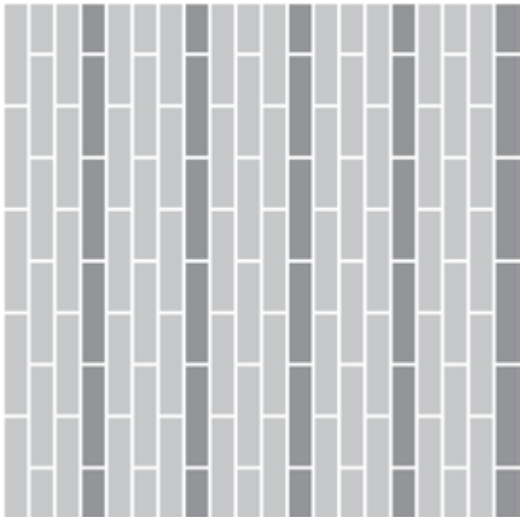
Modular, 25cm x 1m	142650AK00
Backing System	GlasBac® Tile
Yarn Manufacturer	Universal
Yarn System	Post-Consumer Content Nylon
Color System	100% Solution Dyed
Construction	Tufted Pattern Loop
Lifetime Antimicrobial	Intersept®
Soil/Stain Protection	Protekt2®
Pile Thickness	0.062 in., 1.6 mm
Pile Density	9,290
Total Recycled Content	72%
Indoor Air Quality	CRI Green Label Plus #GLP0820



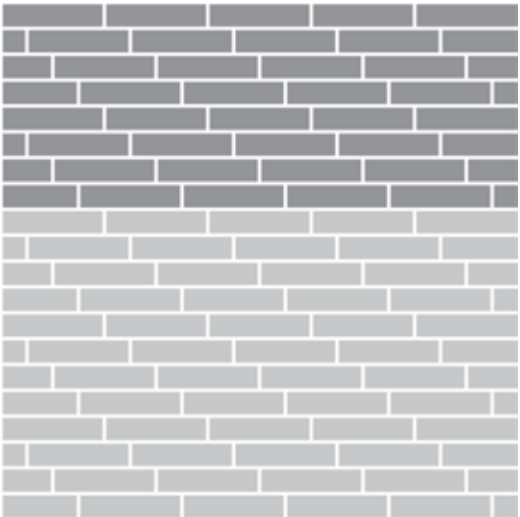
Design Ideas Below are floor layouts showing how to create the design ideas shared in several of the images featured in this brochure.



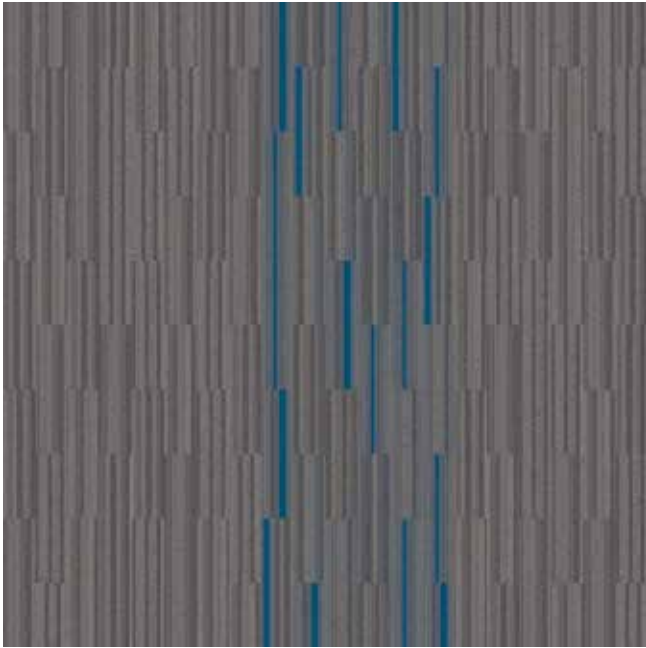
PRODUCT SS217 COLOR 105013 PATH
PRODUCT SS218 COLOR 105021 PATH/VERDE PRIMAVERA INSTALLED ASHLAR



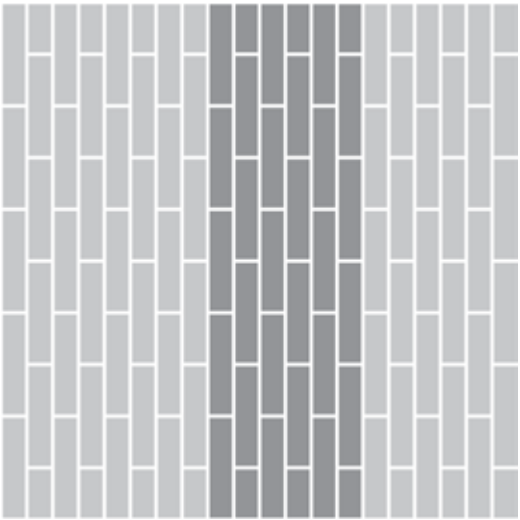
PRODUCT SS217 COLOR 105009 LANE
PRODUCT SS218 COLOR 105017 LANE/VERDE PRIMAVERA INSTALLED ASHLAR



PRODUCT SS217 COLOR 105010 ALLEY PRODUCT SS218
COLOR 105018 ALLEY/ROJO INSTALLED HERRINGBONE



PRODUCT SS217 COLOR 105011 CROSSROAD
PRODUCT SS218 COLOR 105019 CROSSROAD/LAGUNA INSTALLED ASHLAR



Why Our Modular Carpet?



Modular Flooring

Performance and flexibility. Interface's standard backing systems set the industry standard for modular performance. Tiles stay on the floor with no upcurl, no tapping and no rippling effect, yet are easy to selectively replace. Our modular carpet is easier to handle than bulky roll carpet and produces an average of just 3-4% waste compared to roll carpet's average of 14%. And it installs seamlessly with our LVT, no transition strips needed.



Carbon Neutral Floors™

Create a climate fit for life. All Interface flooring sold globally is third party verified carbon neutral. We've taken a holistic approach to achieve carbon neutrality, first through reducing the carbon footprint of our products and then using carbon offsets for the remainder, including the emissions from raw materials, our manufacturing processes and product use to end of life.



TacTiles™

No glue installation. Our revolutionary TacTiles installation system eliminates the need for glue, adhering tiles securely together to form a floor that “floats” for greater flexibility, easier replacement and long-term performance. The result? Less mess, less waste and virtually no VOCs, not to mention an environmental footprint that is over 90% lower than that of traditional glue adhesives.



Intersept®

Mold protection. Our proprietary preservative, Intersept, protects our modular carpet against mold growth and odor-causing bacteria—guaranteed. Intersept treated carpet, with proper maintenance, shows no mold or bacterial growth when tested per the ASTM E2471 Standard Test Method. Intersept is EPA approved for safe use in carpet, water insoluble and contains no halogens, heavy metals, phenols or formaldehyde.



ReEntry™

Recyclable is now a reality. Through our ReEntry program and partnerships with our fiber suppliers and recycling centers throughout North America, separated Type 6 and 6,6 nylon are recycled into new 6 and 6,6 nylon while separated GlasBac™, GlasBacRE, similar competitive backings and our own LVT are recycled into new GlasBacRE non-virgin PVC backing using our Cool Blue™ technology. The result? Products with up to 89% total recycled content, including as much as 27% post-consumer content.



Sustainable Choice

Environmental responsibility. More than 95% of Interface products manufactured in the Americas carry the GreenCircle Certified Environmental Facts label, which has verified that standard Interface products are manufactured using 99% renewable energy and offer a minimum of 66% and 80% total recycled content when backed with GlasBac and GlasBacRE backing respectively.

Samples

Order samples at www.interface.com. You'll receive email order confirmations, 24/7 access to order status and more. Not near a computer? You can also request samples by calling one of the numbers below.

United States 1.877.605.1500	Canada 1.866.398.3192
Brazil + 55 11 2196 0900	Latin America + 52 55 6395 5100

www.interface.com

Register at www.interface.com to:

- Browse products and order samples
- View carpet in a variety of room scenes
- Browse floor designs, change colors, view as a grid or in a room, download and share
- Use our LEED Calculator
- Check order status and inventory availability
- Sign up to get the latest information on Interface products and news

InterCircle™ Sample Return

Help us close the loop on the carpet sampling process. Through our InterCircle Sample Return program, sample materials stay out of the landfill and are re-used as samples until it is time to recycle them into new carpet. By reducing sample production material and diverting old materials from the landfill, we can reduce our overall environmental footprint.

Call 1.877.605.1500 (U.S.) or 1.866.398.3192 (Canada) to order a sample return bag with a prepaid return label.

Third Party Certification



Bureau Veritas – All Interface flooring sold globally is third party verified carbon neutral.



Environmental Product Declaration (EPD) – A statement of product ingredients and environmental impacts over the entire life cycle of a product. A comprehensive life cycle assessment (LCA) is performed to ISO standards to develop an EPD, after which both the EPD and LCA must be third party verified.



Sustainable Assessment for Carpet – The only carpet sustainability standard in North America that evaluates the environmental impact of carpet for its entire lifecycle.



CRI Green Label Plus – An independent testing program that identifies carpet and adhesives with very low emissions of VOCs to help improve indoor air quality.

All product specifications reflect averages derived from product sample testing, are subject to normal manufacturing and testing tolerances and inherent pattern variances, and may be changed without notice. For more information about these and other important attributes of the product(s) described herein, including recycled content and product warranty information, please see www.interface.com/disclaimer.



Printed on 50% post consumer waste (PCW) fiber manufactured using wind power.



We have tried our very best to accurately represent product colors. However, due to the nature of printed materials, color of actual products may vary slightly. Please request a sample to see actual product color.