



Streaming Collection

Interface®

Streaming™ Collection

Color pops. Neutrals. Texture. Pattern. The search begins here when selecting a palette and designing a floor that supports the individual, the business and the brand.

The Streaming Collection considers all of these aspects, all at once. Three styles in combinations of cool and warm grays, flecked with light and dark, create texture and contrast. The two accent styles stream color in more and less intensity, organically defining patterns.

Source Material™ is the grounding style—four perfect, simple grays in a balanced texture. Bitrate™ introduces eight well-chosen accent colors from the basic branding spectrum and Upload™ adds a boost with a more is more approach—more color, more texture, more pattern. Any one of these will cover the floor beautifully. Combine two or all three and quickly see the possibilities when you have all you need, all at once.

The Streaming Collection is made from 100% recycled content nylon and just like every product we sell globally, it is carbon neutral. Just a couple of the many steps we take toward creating a climate fit for life. Join the **#ClimateTakeBack** movement.

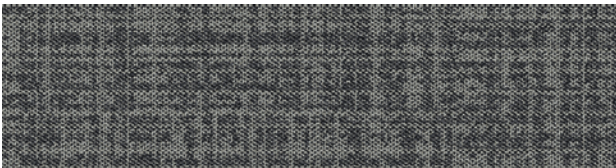


PRODUCT SOURCE MATERIAL COLOR 106310 CHARCOAL
PRODUCT UPLOAD COLORS 106294 LIGHT MUSTARD, 106296 LIGHT YELLOW INSTALLED ASHLAR

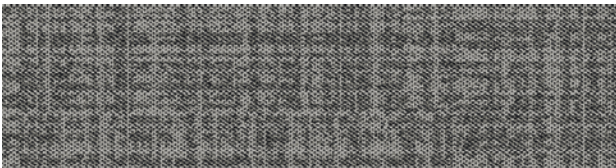


PRODUCT SOURCE MATERIAL **COLOR** 106307 IRON
PRODUCT UPLOAD **COLOR** 106290 LIGHT RED **INSTALLED** ASHLAR

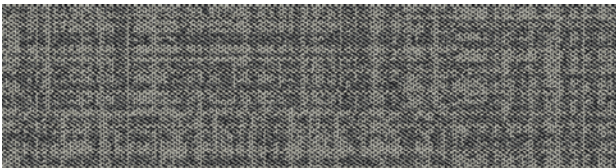
Source Material™ Colorline



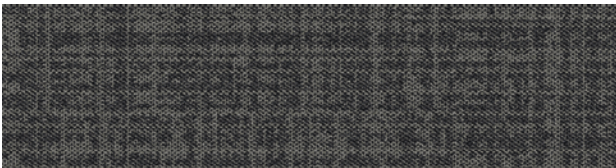
106307 IRON



106308 GRAPHITE



106309 NICKEL



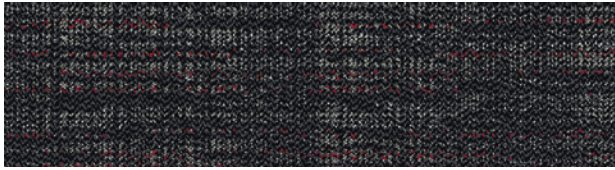
106310 CHARCOAL

Specifications

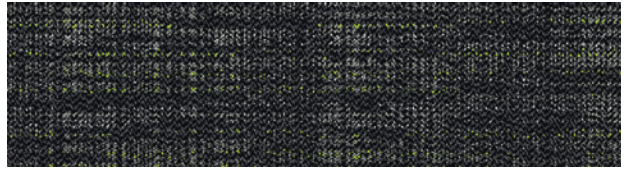
Modular, 25cm x 1m	163290AK00
Backing System	GlasBac™ Tile
Yarn Manufacturer	Aquafil
Yarn System	100% Recycled Content Nylon
Color System	100% Solution Dyed
Construction	Tufted Textured Loop
Lifetime Antimicrobial	Intersept®
Soil/Stain Protection	Protekt2™
Pile Thickness	0.079 in., 2.0 mm
Pile Density	7,747
Total Recycled Content	76%
Indoor Air Quality	CRI Green Label Plus #GLP0820



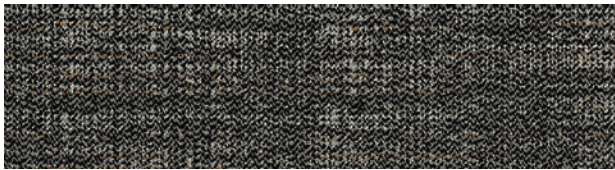
Bitrate™ Colorline



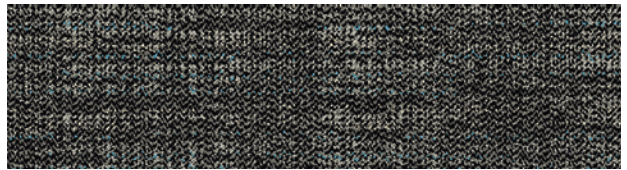
106298 DARK RED



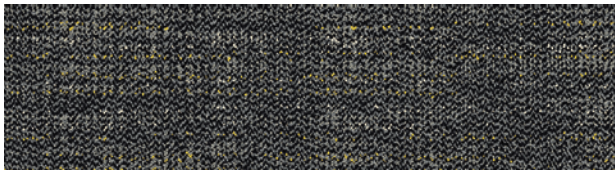
106299 DARK GREEN



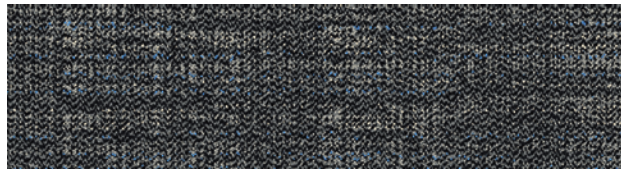
106300 DARK COPPER



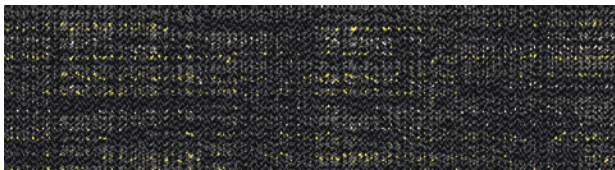
106301 DARK TEAL



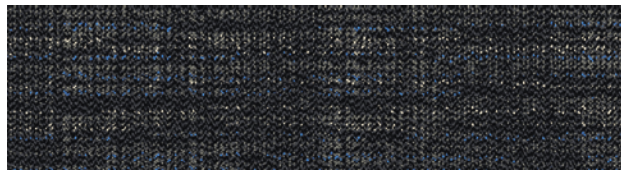
106302 DARK MUSTARD



106303 DARK AQUA



106304 DARK YELLOW



106305 DARK BLUE

Specifications

Modular, 25cm x 1m	161680AK00
Backing System	GlasBac™ Tile
Yarn Manufacturer	Aquafil
Yarn System	100% Recycled Content Nylon
Color System	100% Solution Dyed
Construction	Tufted Pattern Loop
Lifetime Antimicrobial	Intersept®
Soil/Stain Protection	Protekt2™
Pile Thickness	0.086 in., 2.2 mm
Pile Density	7,535
Total Recycled Content	75%
Indoor Air Quality	CRI Green Label Plus #GLP0820



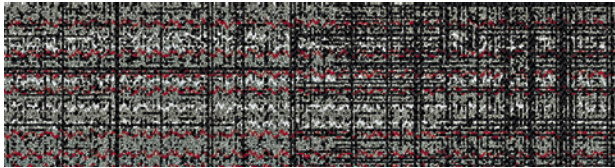


PRODUCT BITRATE COLOR 106303 DARK AQUA INSTALLED ASHLAR

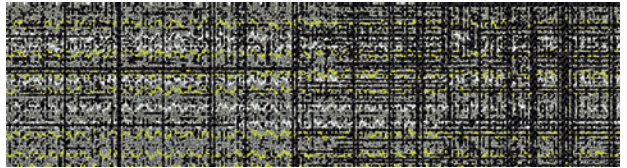


CARPET PRODUCT UPLOAD COLOR 106293 LIGHT TEAL INSTALLED ASHLAR
LVT PRODUCT LEVEL SET™ | TEXTURED STONES COLOR A00308 LIGHT CONCRETE INSTALLED MONOLITHIC

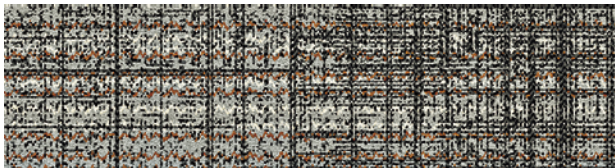
Upload™ Colorline



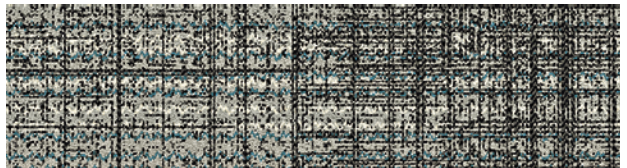
106290 LIGHT RED



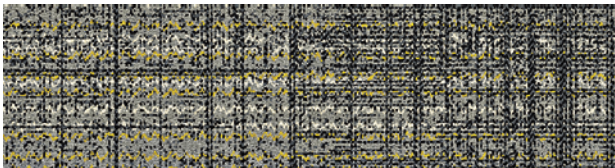
106291 LIGHT GREEN



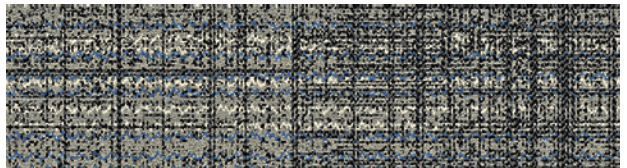
106292 LIGHT COPPER



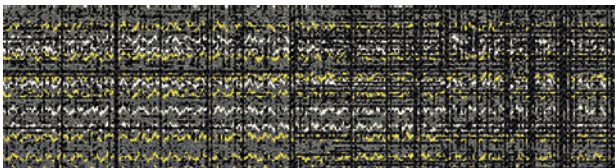
106293 LIGHT TEAL



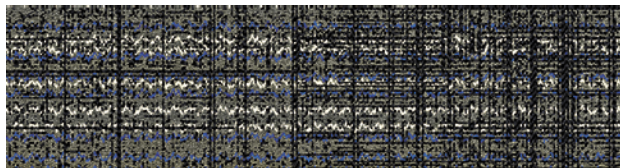
106294 LIGHT MUSTARD



106295 LIGHT AQUA



106296 LIGHT YELLOW



106297 LIGHT BLUE

Specifications

Modular, 25cm x 1m	161660AK00
Backing System	GlasBac™ Tile
Yarn Manufacturer	Aquafil
Yarn System	100% Recycled Content Nylon
Color System	100% Solution Dyed
Construction	Tufted Pattern Loop
Lifetime Antimicrobial	Intersept®
Soil/Stain Protection	Protekt2™
Pile Thickness	0.080 in., 2.0 mm
Pile Density	8,550
Total Recycled Content	76%
Indoor Air Quality	CRI Green Label Plus #GLP0820



Why Our Modular Flooring?



Modular Flooring

Performance and flexibility. Interface's standard backing systems set the industry standard for modular performance. Tiles stay on the floor with no upcurl, no tapping and no rippling effect, yet are easy to selectively replace. Our modular carpet is easier to handle than bulky roll carpet and produces an average of just 3-4% waste compared to roll carpet's average of 14%. And it installs seamlessly with our LVT, no transition strips needed.



Carbon Neutral Floors™

Create a climate fit for life. All Interface flooring sold globally is third party verified carbon neutral. We've taken a holistic approach to achieve carbon neutrality, first through reducing the carbon footprint of our products and then using carbon offsets for the remainder, including the emissions from raw materials, our manufacturing processes and product use to end of life.



TacTiles™

No glue installation. Our revolutionary TacTiles installation system eliminates the need for glue, adhering tiles securely together to form a floor that "floats" for greater flexibility, easier replacement and long-term performance. The result? Less mess, less waste and virtually no VOCs, not to mention an environmental footprint that is over 90% lower than that of traditional glue adhesives.

Samples

Order samples at www.interface.com. You'll receive email order confirmations, 24/7 access to order status and more. Not near a computer? You can also request samples by calling one of the numbers below.

United States 1.877.605.1500	Canada 1.866.398.3192
Brazil + 55 11 2196 0900	Latin America + 52 55 6395 5100

www.interface.com

Register at www.interface.com to:

- Browse products and order samples
- View carpet in a variety of room scenes
- Browse floor designs, change colors, view as a grid or in a room, download and share
- Use our LEED Calculator
- Check order status and inventory availability
- Sign up to get the latest information on Interface products and news

InterCircle Sample Return

Help us close the loop on the carpet sampling process. Through our InterCircle Sample Return program, sample materials stay out of the landfill and are re-used as samples until it is time to recycle them into new carpet. By reducing sample production material and diverting old materials from the landfill, we can reduce our overall environmental footprint.

Call 1.877.605.1500 (U.S.) or 1.866.398.3192 (Canada) to order a sample return bag with a prepaid return label.

Third Party Certification



Bureau Veritas – All Interface flooring sold globally is third party verified carbon neutral.



Environmental Product Declaration (EPD) – A statement of product ingredients and environmental impacts over the entire life cycle of a product. A comprehensive life cycle assessment (LCA) is performed to ISO standards to develop an EPD, after which both the EPD and LCA must be third party verified.



Sustainable Assessment for Carpet – The only carpet sustainability standard in North America that evaluates the environmental impact of carpet for its entire lifecycle.



CRI Green Label Plus – An independent testing program that identifies carpet and adhesives with very low emissions of VOCs to help improve indoor air quality.



Intersept®

Mold protection. Our proprietary preservative, Intersept, protects our modular carpet against mold growth and odor-causing bacteria—guaranteed. Intersept treated carpet, with proper maintenance, shows no mold or bacterial growth when tested per the ASTM E2471 Standard Test Method. Intersept is EPA approved for safe use in carpet, water insoluble and contains no halogens, heavy metals, phenols or formaldehyde.



ReEntry™

Recyclable is now a reality. Through our ReEntry program and partnerships with our fiber suppliers and recycling centers throughout North America, separated Type 6 and 6,6 nylon are recycled into new 6 and 6,6 nylon while separated GlasBac™, GlasBacRE, similar competitive backings and our own LVT are recycled into new GlasBacRE non-virgin PVC backing using our Cool Blue™ technology. The result? Products with up to 89% total recycled content, including as much as 27% post-consumer content.



Sustainable Choice

Environmental responsibility. More than 95% of Interface products manufactured in the Americas carry the GreenCircle Certified Environmental Facts label, which has verified that standard Interface products are manufactured using 99% renewable energy and offer a minimum of 66% and 80% total recycled content when backed with GlasBac and GlasBacRE backing respectively.

Transparency and certified sustainability leadership come standard on all Interface products, including published ingredients in HPDs (Health Product Declarations) or Declare Labels. In addition, more than 99% of our products globally have a published EPD (Environmental Product Declaration), which evaluates consistent factors based on full life cycle assessment (LCA). And, all Interface products with GlasBacRE backing are certified to the Platinum level of the NSF/ANSI 140 Sustainable Assessment for Carpet. GlasBac backed products meet the Gold level. NSF/ANSI 140 certified products contribute toward a USGBC or CaGBC LEED credit.



RECYCLED
Paper made from
recycled material
FSC® C009723



PLEASE RECYCLE

All product specifications reflect averages derived from product sample testing, are subject to normal manufacturing and testing tolerances and inherent pattern variances, and may be changed without notice. For more information about these and other important attributes of the product(s) described herein, including recycled content and product warranty information, please see www.interface.com/disclaimer.

Printed on 50% post consumer waste (PCW) fiber manufactured using wind power.

We have tried our very best to accurately represent product colors. However, due to the nature of printed materials, color of actual products may vary slightly. Please request a sample to see actual product color.

www.interface.com

United States Headquarters

1280 West Peachtree Street NW
Atlanta, GA 30309
1.800.634.6032

Canadian Headquarters

233 Lahr Drive
Belleville, ON K8N 5S2
1.800.267.2149 ext.52128

Brazilian Headquarters

Rua Surubim, 577 - Conjuntos
73/74 7º Andar
04571-050 - São Paulo - SP
+ 55 11 2196 0900

Latin American Headquarters

Montes Urales # 415 Piso 6
Col. Lomas de Chapultepec
México City, D.F. 11000
Mexico
+ 52 55 6395 5100

CIM # IFS00833 09/2019



Climate change is undeniable. And reversible. Our mission is to prove it.
Join the #ClimateTakeBack and help create a climate fit for life.