



Printed on 100% post consumer waste (PCW)
fiber manufactured using wind power.

interface.com

United States Headquarters
1280 West Peachtree Street NW
Atlanta, GA 30309
1.800.634.6032

Canadian Headquarters
233 Lahr Drive
Belleville, ON K8N 5S2
1.800.267.2149 ext. 52128

Latin American Headquarters
Montes Urales # 415 Piso 6
Lomas de Chapultepec
Miguel Hidalgo, CDMX
11000 Mexico
+ 52.55.2791.6812

CIM # IFS00886 09/2022



Climate change is undeniable. And
reversible. Our mission is to prove it.
**Join the #ClimateTakeBack and
help create a climate fit for life.**

Stargazing Collection | LVT

Aries
Scorpio

Interface®

Colorful. Functional. Fun.

The Stargazing™ LVT Collection was designed with the specific needs of school facilities, with two patterns that cleverly hide dirt and wear over time. Look to the skies for complementary square products in 18 different colorways: Scorpio™ delivers a multi-directional geometric design that transitions well into the dynamic textures of Aries™. And, you'll find exact coordinates for Stargazing styles in Studio Set™ and Walk on By™ LVT — all of which work together to create flexible design opportunities for K-12 schools.

Stargazing is fully recyclable through our ReEntry™ program and contains 39% recycled content. And, like all flooring you specify from Interface, it is carbon neutral across its full product life cycle through our third party verified Carbon Neutral Floors™ program.



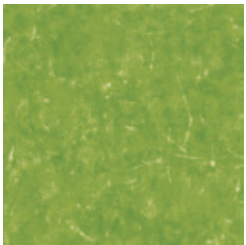




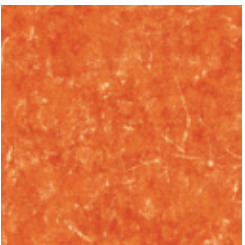
Aries™ Colorline



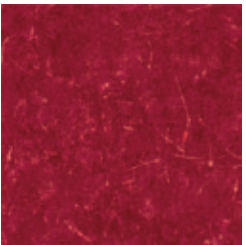
A01801 YELLOW



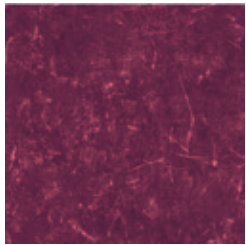
A01802 CHARTREUSE



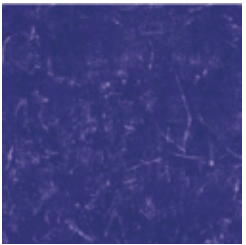
A01803 ORANGE



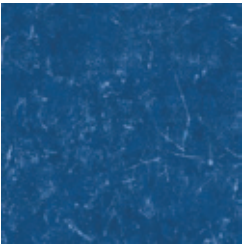
A01804 RED



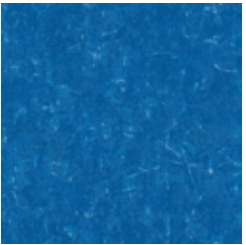
A01805 DEEP FUCHSIA



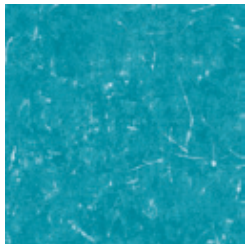
A01806 VIOLET



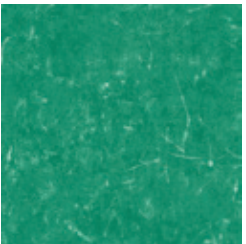
A01807 ROYAL BLUE



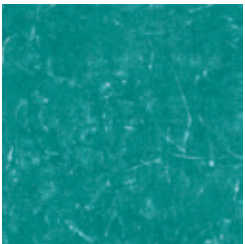
A01808 ELECTRIC BLUE



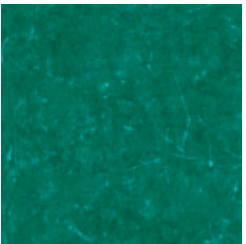
A01809 AQUA



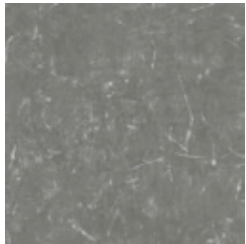
A01810 KELLY GREEN



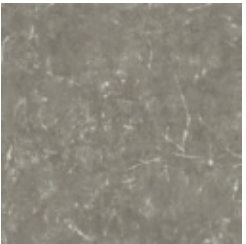
A01811 TURQUOISE



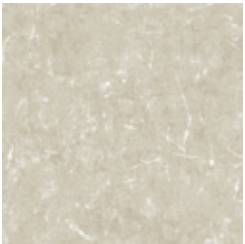
A01812 DARK GREEN



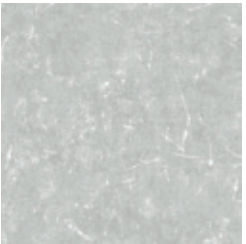
A01813 PEBBLE



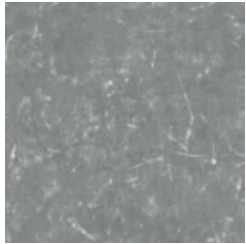
A01814 MUSHROOM



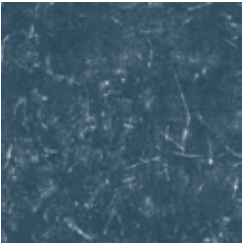
A01815 SAND



A01816 SILVERLIGHT



A01817 PEWTER



A01818 SLATE



Scorpio™ Colorline



A01701 YELLOW



A01702 CHARTREUSE



A01703 ORANGE



A01704 RED



A01705 DEEP FUCHSIA



A01706 VIOLET



A01707 ROYAL BLUE



A01708 ELECTRIC BLUE



A01709 AQUA



A01710 KELLY GREEN



A01711 TURQUOISE



A01712 DARK GREEN



A01713 PEBBLE



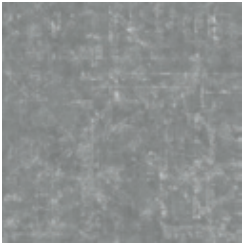
A01714 MUSHROOM



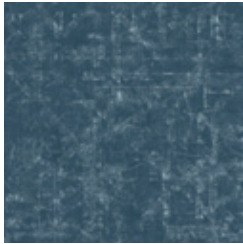
A01715 SAND



A01716 SILVERLIGHT



A01717 PEWTER



A01718 SLATE



Specifications

Product Number	A018
Aries	A017
Scorpio	High Performance Luxury Vinyl Tile
Product Construction	Class III Printed Vinyl Tile
Class / ASTM F 1700	22 mil
Wear Layer Thickness	4.5mm
Total Thickness	Commercial Grade
Backing Class	Ceramor™ Coating
Finish	
Nominal Dimensions	
Aries & Scorpio	50cm x 50cm (19.69in x 19.69in)
Total Recycled Content (Pre Consumer)	39%
Indoor Air Quality	
	GREENGUARD Gold
Full Life Cycle Carbon Emissions	FloorScore® Certified
Environmental Certifications	CDPH 01350 Compliant
LEED v4	Carbon Neutral Floors™
	NSF/ANSI 332 Silver
	Contributes to multiple IEQ and MR credits

View the full product specification on [interface.com](#).

Installation Methods



Aries™ Colorline



BROWSE IMAGES
ORDER SAMPLES

Scorpio™ Colorline



BROWSE IMAGES
ORDER SAMPLES



Why Our Modular Resilient Sound Choice™ 4.5 mm LVT?



Integrated System
Save time and look good doing it. Our Sound Choice LVT integrates with our full product portfolio, allowing you to streamline specification and installation of your floorplate. Add our modular carpet for an inset rug or an adjacent field – no transition strip required.



Easy Maintenance
Create a unique look that lasts. Interface Sound Choice LVT extends the life of your floor. From simple maintenance like damp mopping to selectively replacing damaged tiles, your flooring investment will stand the test of time - beautifully and effortlessly.

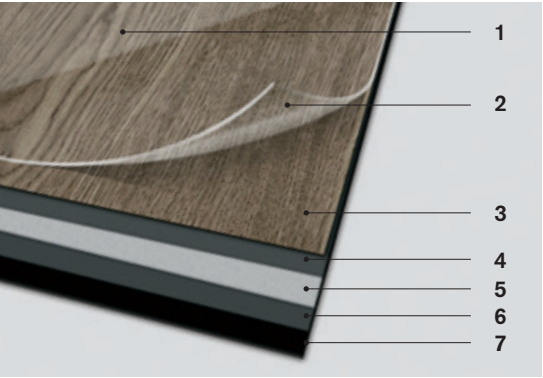


Circular System
Keep flooring out of the landfill. Interface LVT on Sound Choice™ is produced with a controlled material stream, so it is recyclable through our ReEntry™ program. And, like all of Interface modular resilient flooring, our LVT contains 39% recycled content.



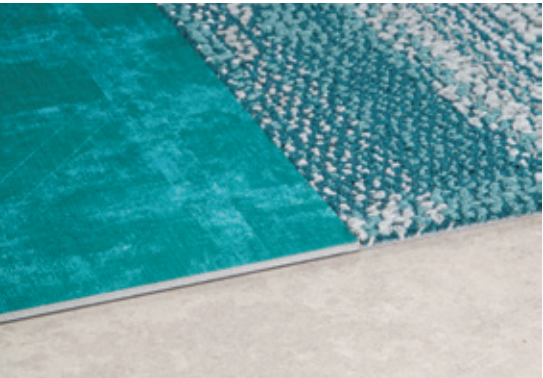
Noise Reduction
Silence distractions. Sound Choice is a specially formulated backing for superior noise reduction, offering you best-in-class impact sound reduction and floor to floor sound transmission.

High Performance from Top to Bottom



- 1. Ceramor™ Coating.** Minimizes everyday scratching and scuffing.
- 2. Wear Layer.** High quality 22 mil layer enabling 15 years of resilience and performance.
- 3. Print Film.** Provides outstanding visuals of natural materials and Interface innovative designs.
- 4. Core Sheet.** Creates a thickness for a stronger core and reduces telegraphing from beneath.
- 5. Fiberglass.** Adds dimensional stability and controlled flexibility.
- 6. Core Sheet.** Creates a thickness for a stronger core and reduces telegraphing from beneath.
- 7. Sound Choice Backing.** Provides comfort and superior acoustic performance.

Interface Sound Choice LVT and carpet tile allow you to seamlessly move from hard to soft surfaces. No transition strip needed.



Help Lower Your Carbon Footprint
Like all the flooring products we sell, Interface LVT is carbon neutral across its full product life cycle through our third party verified Carbon Neutral Floors™ program. To find out more, visit interface.com/carbonneutral



Health Product Declaration (HPD)
A transparency tool for evaluating if a product includes materials of concern and whether it supports Green Chemistry.



NSF/ANSI 332 Silver
This standard evaluates the environmental impact of resilient floor covering for its entire life cycle.



Environmental Product Declaration (EPD)
A third-party verified statement of product ingredients and environmental impacts over the entire life cycle of a product.



GREENGUARD Gold & FloorScore®
Meeting the highest standards for indoor air quality and assuring very low emissions of VOCs, Interface LVT is GREENGUARD Gold and FloorScore® Certified and CDPH 01350 compliant.

Samples
Order samples at interface.com. You'll receive email order confirmations, 24/7 access to order status and more. Not near a computer? You can also request samples by calling one of the numbers below.

United States 1.877.605.1500	Canada 1.866.398.3192
Brazil +5511.2196.0900	Latin America +52.55.2791.6812

interface.com
Register at interface.com to:

- Browse products and order samples
- View flooring in a variety of room scenes
- Change colors, view as a grid or in a room, download and share
- Check order status and inventory availability
- Sign up to get the latest information on Interface products and news

We have tried our very best to accurately represent product colors. However, due to the nature of printed materials, color of actual products may vary slightly. Please request a sample to see actual product color.

All product specifications reflect averages derived from product sample testing, are subject to normal manufacturing and testing tolerances and inherent pattern variances, and may be changed without notice. For more information about these and other important attributes of the product(s) described herein, including recycled content and product warranty information, please see interface.com/disclaimer.