

An abstract painting featuring vibrant colors and expressive brushstrokes. The composition is dominated by a dark, textured background of black and dark blue. Overlaid on this are broad, sweeping strokes of bright cyan and turquoise. A prominent, thick, diagonal stroke of bright red-orange runs across the center. Several thin, light green lines crisscross the scene, adding a sense of movement and depth. The overall effect is one of dynamic energy and layered complexity.

# Simple Abstraction

---

Veiled Brushwork  
Video Spectrum  
Shaded Pigment  
Painted Gesture  
Digitized Tuft

---

**Interface**<sup>®</sup>

## Simple Abstraction

---

Art: It all begins with mark-making. The first mark is a dot. The dot becomes a line. The line becomes a field. The field becomes a texture. The texture becomes the painting.

Simple Abstraction carpet collection creates canvases across the floor. The canvas is defined by the designer. Each becomes its own artistic expression when textures are combined, colours are chosen, and marks are made.

Simple and elegant, Digitized Tuft™ explores the most primary mark-making while Veiled Brushwork™ mimics the sweep of coloured pigments blended in a brushstroke. Shaded Pigment™ layers colour on colour to create depth and Video Spectrum™ activates each colour by setting them close, side by side. Finally, Painted Gesture™ captures all the impact of the great abstract expressionism movement with its dynamic scale and use of colour.

Make your mark with our Carbon Neutral Floors™. Simple Abstraction Collection is made with 100% recycled nylon, and like all of our products, globally, is carbon neutral. Just a couple of the steps we take toward creating a climate fit for life. Join the #ClimateTakeBack movement.





PRODUCT VEILED BRUSHWORK COLOUR NEUTRAL INSTALLED HERRINGBONE

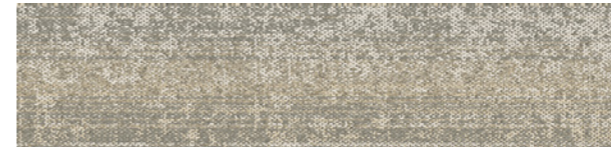
## Veiled Brushwork™ Colour Range



9363001 NEUTRAL



9363002 CARBON



9363003 URBAN



9363004 METAL

## Specification

Style Code	9363
Product Construction	Tufted Textured Loop
Yarn System	100% Recycled Solution Dyed Nylon
Machine Gauge	1/12
Pile Thickness	3.0mm (± 0.5mm)
Total Thickness	6.1mm (± 0.5mm)
Tile Size	25 x 100cm
ACCS (Australia Only)	Commercial Extra Heavy Duty & Stairs
Lifetime Antimicrobial	Intersept®
Soil/Stain Protection	Protek®
Installation Methods	Ashlar, Herringbone

View the full product specification on [interface.com](https://www.interface.com)

## Installation Methods

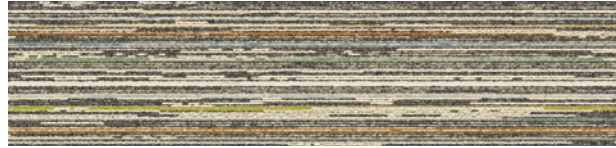


ASHLAR



HERRINGBONE

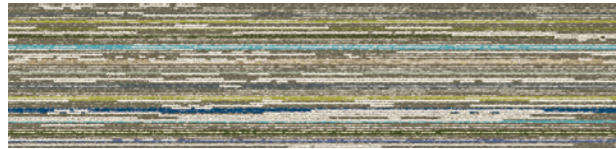
## Video Spectrum™ Colour Range



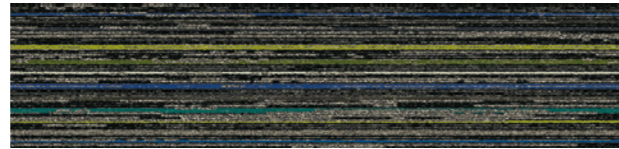
9364001 NEUTRAL



9364002 CARBON



9364003 URBAN



9364004 METAL

## Specification

Style Code	9364
Product Construction	Tufted Cut and Loop
Yarn System	100% Recycled Solution Dyed Nylon
Machine Gauge	5/64
Pile Thickness	3.3mm (± 0.5mm)
Total Thickness	6.4mm (± 0.5mm)
Tile Size	25 x100cm
ACCS (Australia Only)	Commercial Extra Heavy Duty & Stairs
Lifetime Antimicrobial	Intersept®
Soil/Stain Protection	Protek®
Installation Methods	Ashlar, Herringbone

View the full product specification on [interface.com](https://www.interface.com)

## Installation Methods



ASHLAR



HERRINGBONE



CARPET PRODUCT VIDEO SPECTRUM COLOUR CARBON INSTALLED ASHLAR  
LVT PRODUCT LEVEL SET | TEXTURED STONES COLOUR LIGHT CONCRETE INSTALLED NON DIRECTIONAL



## Shaded Pigment™ Colour Range



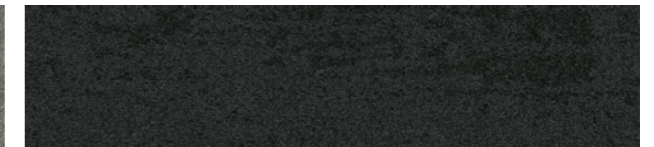
9362001 NEUTRAL ACCENT



9362007 NEUTRAL GROUND



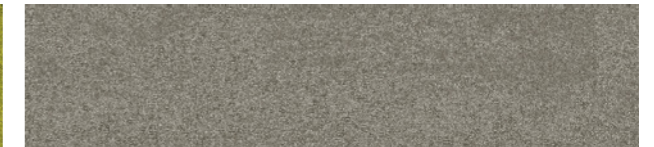
9362002 CARBON ACCENT



9362008 CARBON GROUND



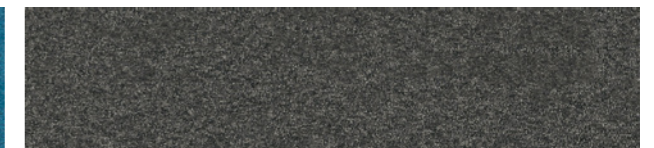
9362003 URBAN ACCENT



9362009 URBAN GROUND



9362004 METAL ACCENT



9362010 METAL GROUND

## Specification

Style Code	9362
Product Construction	Tufted Textured Tip Sheared Loop
Yarn System	100% Recycled Solution Dyed Nylon
Machine Gauge	1/10
Pile Thickness	4.9mm (± 0.5mm)
Total Thickness	8.5mm (± 0.5mm)
Tile Size	25 x 100cm
ACCS (Australia Only)	Commercial Heavy Duty & Stairs
Lifetime Antimicrobial	Intersept®
Soil/Stain Protection	Protek®
Installation Methods	Ashlar

View the full product specification on [interface.com](http://interface.com)

## Installation Methods



ASHLAR

PRODUCT SHADED PIGMENT COLOURS METAL ACCENT METAL GROUND URBAN ACCENT INSTALLED ASHLAR  
 PRODUCT VIDEO SPECTRUM COLOURS METAL INSTALLED ASHLAR

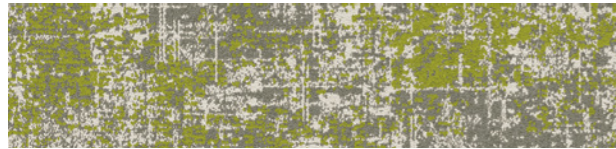
## Painted Gesture™ Colour Range



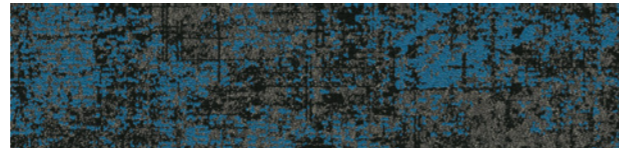
9369001 NEUTRAL



9369002 CARBON



9369003 URBAN



9369004 METAL

## Specification

Style Code	9369
Product Construction	Tufted Tip Sheared Loop
Yarn System	100% Recycled Solution Dyed Nylon
Machine Gauge	1/10
Pile Thickness	3.4mm (± 0.5mm)
Total Thickness	7.7mm (± 0.5mm)
Tile Size	25 x 100cm
ACCS (Australia Only)	Commercial Extra Heavy Duty & Stairs
Lifetime Antimicrobial	Intersept®
Soil/Stain Protection	Protek®
Installation Methods	Ashlar

View the full product specification on [interface.com](https://www.interface.com)

## Installation Methods



ASHLAR



CARPET PRODUCT PAINTED GESTURE™ COLOUR URBAN  
LVT PRODUCT LEVEL SET™ TEXTURED WOODGRAINS COLOUR ANTIQUE DARK OAK INSTALLED ASHLAR

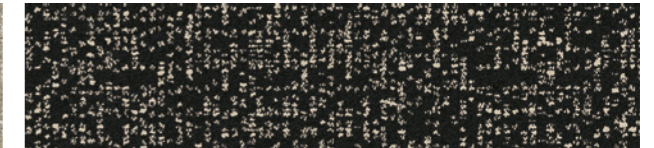


PRODUCT DIGITIZED TUFT COLOUR URBAN INSTALLED ASHLAR  
 PRODUCT SHADED PIGMENT COLOUR URBAN ACCENT INSTALLED ASHLAR

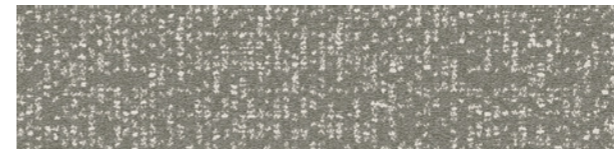
## Digitized Tuft™ Colour Range



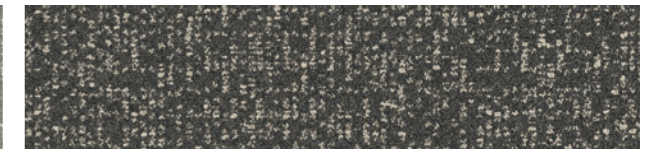
9361001 NEUTRAL



9361002 CARBON



9361003 URBAN



9361004 METAL

## Specification

Style Code	9361
Product Construction	Tufted Textured Loop
Yarn System	100% Recycled Solution Dyed Nylon
Machine Gauge	1/10
Pile Thickness	3.8mm (± 0.5mm)
Total Thickness	7.7mm (± 0.5mm)
Tile Size	25 x 100cm
ACCS (Australia Only)	Commercial Extra Heavy Duty & Stairs
Lifetime Antimicrobial	Intersept®
Soil/Stain Protection	Protek®
Installation Methods	Ashlar, Herringbone

View the full product specification on [interface.com](https://www.interface.com)

## Installation Methods

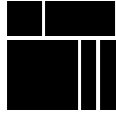


ASHLAR



HERRINGBONE

## Why Our Modular Flooring?



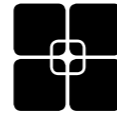
### Modular Flooring

*Performance and flexibility.* Interface's standard backing systems set the industry standard for modular performance. Tiles stay on the floor with no upcurl, no tapping and no rippling effect, yet are easy to selectively replace. Our modular carpet is easier to handle than bulky roll carpet and produces an average of just 2-5% waste compared to roll carpet's average of 15%. And it installs seamlessly with our LVT, no transition strips needed.



### Carbon Neutral Floors™

*Create a climate fit for life.* All Interface flooring sold globally is third party verified carbon neutral across the entire product lifecycle. We've taken a holistic approach to achieve carbon neutrality, first through reducing the carbon footprint of our products and then using carbon offsets for the remainder, including the emissions from raw materials, our manufacturing processes and product use to end of life.



### TacTiles®

*No glue installation.* Our revolutionary TacTiles installation system eliminates the need for glue, adhering tiles securely together to form a floor that "floats" for greater flexibility, easier replacement and long-term performance. The result? Less mess, less waste and virtually no VOCs, not to mention an environmental footprint that is over 90% lower than that of traditional glue adhesives.



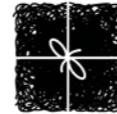
### Intersept®

*Mold protection.* Our proprietary preservative, Intersept, protects our modular carpet against mould growth and odour-causing bacteria—guaranteed. Intersept treated carpet, with proper maintenance, shows no mould or bacterial growth when tested as per the ASTM E2471 Standard Test Method. Intersept is EPA-approved for safe use in carpet, water insoluble and contains no halogens, heavy metals, phenols or formaldehyde.



### Protekt®

*Stain protection.* The life and performance of your flooring is extended with Protekt, our patented stain resistant coating. Protekt uses advanced technology to provide a lasting barrier against permanent soiling and staining, which simplifies the cleaning process and enhances the longevity of your carpet.



### ReEntry

At Interface, an end of life solution of our products is a reality. ReEntry is our innovative programme to reclaim materials used in our product. Taking back our product at end of life is a service we provide our customers to ensure that none of the products they use will end up in landfill. Whether it is recycling into new product or re-purposing, we see our customer's waste as an opportunity for new product life.



### Health Product Declaration (HPD) –

A transparency tool for evaluating whether a product supports Green Chemistry. As part of our work on Health and Materials, Interface continuously reduces the environmental and health impacts of our products through elimination of materials of concern.



### 15-Year Warranty

Interface products are warranted for 15 years against excessive surface wear, edge ravel, backing separation, shrinking, stretching and static electricity even under castor chair conditions.



### Local Manufacturing

We combine local responsiveness with a global experience. Being part of the same communities as our customers, we foster collaborative, committed, and productive relationships. Our carpet tiles are manufactured in Australia and China, contributing to local economies and the environment.

## Third Party Certifications



### Environmental Product Declaration (EPD)

The Environmental Product Declaration (EPD) is a third party verified environmental certification classified as Type III that quantifies and verifies the lifecycle impacts of products and goods according to the International Standards Organization (ISO) 14025, 14040, 14044 and EN 15804. EPDs help customers that are environmentally driven to evaluate the performance of a product and to make the best decision when choosing a product. All Interface products have EPDs.



### Global GreenTag GreenRate - Level A

Global GreenTag's GreenRate certification is a product rating system recognised by the Green Building Council of Australia, New Zealand and South Africa. It has been set up to meet the criteria of the Green Star® "Sustainable Products" credits. All Interface products are certified "Level A".



### Environmental Certification Scheme - Level 4

ECS-certified carpet manufacturers must adhere to a code of practice that details performance standards for raw materials, manufacturing, in-service use and end-of-life treatment. Interface flooring holds the highest grading under ECS.



### NSF Certification

NSF International develops public health standards and certification programs that help protect the world's food, water, consumer products and environment. Interface carpet tile products are certified "Gold".



### CRI Green Label Plus

The Carpet and Rug Institute (CRI) Green Label Plus sets higher standards for indoor air quality and ensures that customers are purchasing the very lowest emitting products on the market. Interface Carpet Tiles and TacTiles have fulfilled the requirements for this certification.



### Singapore Green Building Product (SGBP)

The SGBP scheme is a certification for green building products and materials which looks at the whole lifecycle of products to account for the full impact. Carpet tile products are certified "Leader" and LVT products are at "Excellent" Level.



### Best Practice Guidelines for PVC

A comprehensive standard for better PVC developed by the Green Building Council of Australia under its Green Star programme. Interface holds Lloyd's Statement of Compliance (Green Building Council of Australia Best Practice Guidelines 2013) for Best Practice PVC for all products made in Australia.

Our EPDs and certifications contribute credits towards Green Building Council's Green Star® rating system.

Green Star credits are approved by the Green Building Councils of Australia and New Zealand. The internationally-recognised Green Star rating system provides independent verification that a building or community project is sustainable. Developed by the Green Building Council of Australia, Green Star is Australia's only national, voluntary, sustainability rating system for buildings and communities.





**Carbon Neutral Floors™**

**[www.interface.com](http://www.interface.com)**

**Australia**

Interface Australia  
local toll free: 1800 804 361

**India**

Interface India  
tel: +91 80 4613 1313

**South East Asia**

Interface Asia  
tel: +65 6478 1510

**South Korea**

Interface South Korea  
tel: +82 2 555 1734

**Japan**

Interface Japan  
tel: +81 3 5733 5211

**Beijing**

Interface China  
tel: +86 10 6590 7810

**Hong Kong**

Interface China  
tel: +852 2802 0838

**Shanghai**

Interface China  
tel: +86 21 6340 3868

10/2023



Climate change is undeniable. And reversible. Our mission is to prove it. **Join the #ClimateTakeBack and help create a climate fit for life.**