

Simple Abstraction

[www.interface.com](http://www.interface.com)

**United States Headquarters**

1503 Orchard Hill Road  
LaGrange, GA 30240  
1.800.634.6032

**Canadian Headquarters**

233 Lahr Drive  
Belleville, ON K8N 5S2  
1.800.267.2149 ext.52128

**Brazilian Headquarters**

Rua Surubim, 577 - Conjuntos  
73/74 7º Andar  
04571-050 - São Paulo - SP  
+ 55 11 2196 0900

**Latin American Headquarters**

Montes Urales # 415 Piso 6  
Col. Lomas de Chapultepec  
México City, D.F. 11000  
Mexico  
+ 52 55 6395 5100

CIM # IFS00828 03/2019



Climate change is undeniable. And reversible. Our mission is to prove it. Join the #ClimateTakeBack and help create a climate fit for life.

**Interface**



Simple Abstraction™

Art: It all begins with mark-making. The first mark is a dot. The dot becomes a line. The line becomes a field. The field becomes a texture. The texture becomes the painting.

Simple Abstraction carpet collection creates canvases across the floor. The canvas is defined by the designer. Each becomes its own artistic expression when textures are combined, colors are chosen, and marks are made.

Simple and elegant, Digitized Tuft™ explores the most primary mark-making while Veiled Brushwork™ mimics the sweep of colored pigments blended in a brushstroke. Shaded Pigment™ layers color on color to create depth and Video Spectrum™ activates each color by setting them close, side by side. Finally, Painted Gesture™ captures all the impact of the great abstract expressionism movement with its dynamic scale and use of color.

Make your mark with our Carbon Neutral Floors™. Simple Abstraction Collection is made with 100% recycled nylon, and like all of our products, globally, is carbon neutral. Just a couple of the steps we take toward creating a climate fit for life. Join the **#ClimateTakeBack** movement.











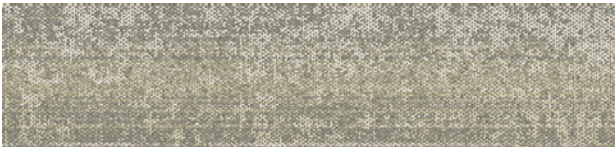
Veiled Brushwork™ Colorline



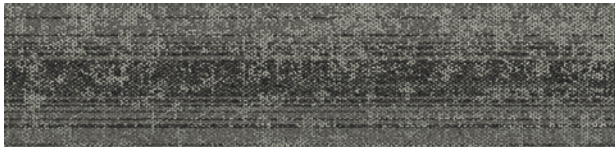
106009 NEUTRAL



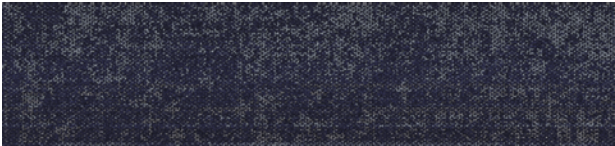
106003 CARBON



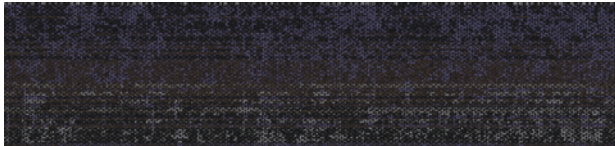
106006 URBAN



106004 METAL



106007 INK



106008 EARTH

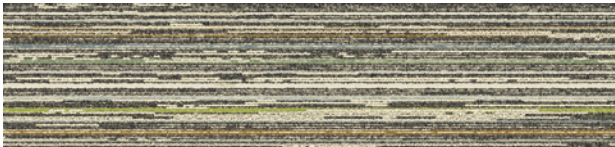
Specifications

Modular, 25cm x 1m	163280AK00
Backing System	GlasBac® Tile
Yarn Manufacturer	Aquafil
Yarn System	100% Recycled Content Type 6 Nylon
Color System	100% Solution Dyed
Construction	Tufted Textured Loop
Preservative Protection	Intersept®
Soil/Stain Protection	Protekt2®
Pile Thickness	0.092 in., 2.3 mm
Pile Density	7,826
Total Recycled Content	76%
Indoor Air Quality	CRI Green Label Plus #GLP0820





Video Spectrum™ Colorline



106013 NEUTRAL



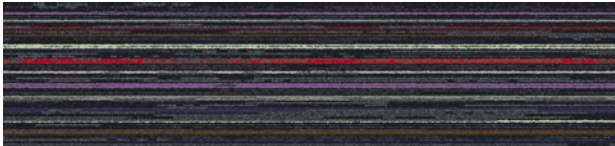
106011 CARBON



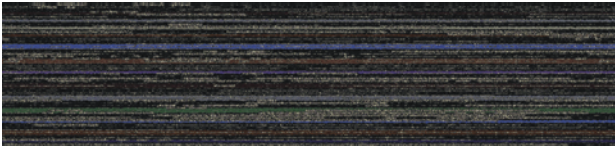
106014 URBAN



106017 METAL



106015 INK



106016 EARTH

Specifications

Modular, 25cm x 1m	125610AK00
Backing System	GlasBac® Tile
Yarn Manufacturer	Aquafil
Yarn System	100% Recycled Content Type 6 Nylon
Color System	100% Solution Dyed
Construction	Tufted Cut & Loop
Preservative Protection	Intersept®
Soil/Stain Protection	Protekt2®
Pile Thickness	0.109 in., 2.8 mm
Pile Density	6,936
Total Recycled Content	76%
Indoor Air Quality	CRI Green Label Plus #GLP0820



CARPET PRODUCT VIDEO SPECTRUM COLOR 106011 CARBON INSTALLED ASHLAR  
LVT PRODUCT LEVEL SET | TEXTURED STONES COLOR A00308 LIGHT CONCRETE INSTALLED NON DIRECTIONAL





Shaded Pigment™ Colorline



105993 NEUTRAL ACCENT



105998 CARBON ACCENT



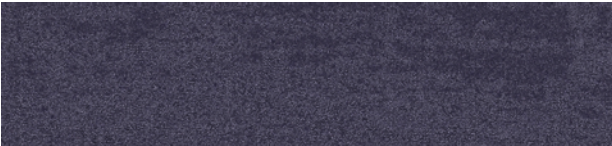
105990 URBAN ACCENT



105995 METAL ACCENT



105991 INK ACCENT



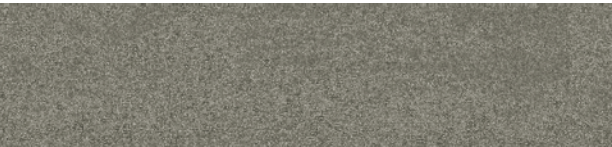
105992 EARTH ACCENT



105989 NEUTRAL GROUND



105987 CARBON GROUND



105994 URBAN GROUND



105988 METAL GROUND

Specifications

Modular, 25cm x 1m	139390AK00
Backing System	GlasBac® Tile
Yarn Manufacturer	Aquafil
Yarn System	100% Recycled Content Type 6 Nylon
Color System	100% Solution Dyed
Construction	Tufted Sheared
Preservative Protection	Intersept®
Soil/Stain Protection	Protekt2®
Pile Thickness	0.183 in., 4.6 mm
Pile Density	5,115
Total Recycled Content	77%
Indoor Air Quality	CRI Green Label Plus #GLP0820



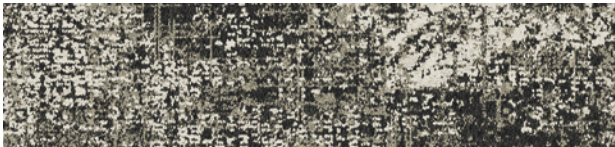
105996 INK GROUND



105997 EARTH GROUND



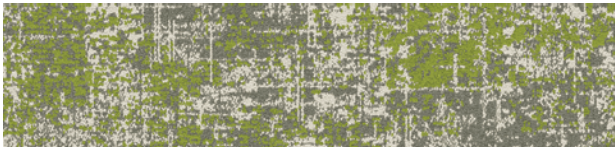
Painted Gesture™ Colorline



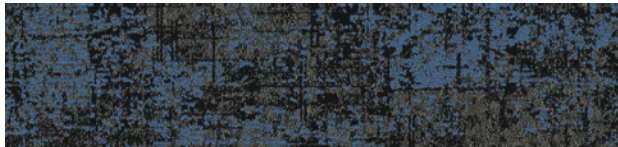
105973 NEUTRAL



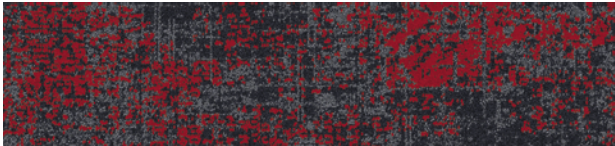
105971 CARBON



105974 URBAN



105972 METAL



105975 INK



105976 EARTH

Specifications

Modular, 25cm x 1m	139370AK00
Backing System	GlasBac® Tile
Yarn Manufacturer	Aquafil
Yarn System	100% Recycled Content Type 6 Nylon
Color System	100% Solution Dyed
Construction	Tufted Sheared
Preservative Protection	Intersept®
Soil/Stain Protection	Protekt2®
Pile Thickness	0.088 in., 2.2 mm
Pile Density	11,045
Total Recycled Content	77%
Indoor Air Quality	CRI Green Label Plus #GLP0820

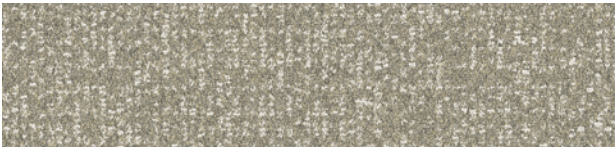


CARPET PRODUCT PAINTED GESTURE COLOR 105974 URBAN  
LVT PRODUCT LEVEL SET | TEXTURED WOODGRAINS  
COLOR A00416 ANTIQUE DARK OAK INSTALLED ASHLAR

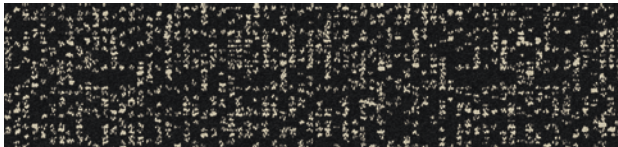




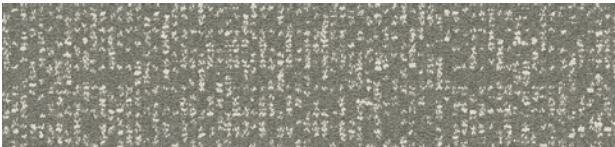
Digitized Tuft™ Colorline



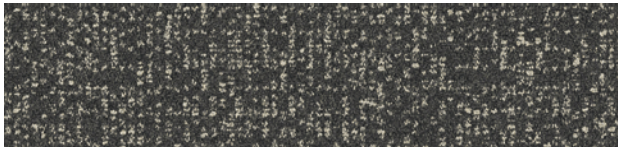
105981 NEUTRAL



105979 CARBON



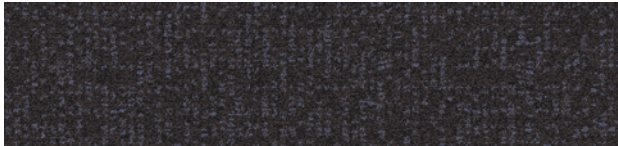
105982 URBAN



105980 METAL



105983 INK



105984 EARTH

Specifications

Modular, 25cm x 1m	139380AK00
Backing System	GlasBac® Tile
Yarn Manufacturer	Aquafil
Yarn System	100% Recycled Content Type 6 Nylon
Color System	100% Solution Dyed
Construction	Tufted Pattern Loop
Preservative Protection	Intersept®
Soil/Stain Protection	Protekt2®
Pile Thickness	0.128 in., 3.3 mm
Pile Density	8,156
Total Recycled Content	78%
Indoor Air Quality	CRI Green Label Plus #GLP0820









Why Our Modular Flooring?



**Modular Flooring**  
*Performance and flexibility.* Interface's standard backing systems set the industry standard for modular performance. Tiles stay on the floor with no upcurl, no tapping and no rippling effect, yet are easy to selectively replace. Our modular carpet is easier to handle than bulky roll carpet and produces an average of just 3-4% waste compared to roll carpet's average of 14%. And it installs seamlessly with our LVT, no transition strips needed.



**Carbon Neutral Floors™**  
*Create a climate fit for life.* All Interface flooring sold globally is third party verified carbon neutral. We've taken a holistic approach to achieve carbon neutrality, first through reducing the carbon footprint of our products and then using carbon offsets for the remainder, including the emissions from raw materials, our manufacturing processes and product use to end of life.



**TacTiles®**  
*No glue installation.* Our revolutionary TacTiles installation system eliminates the need for glue, adhering tiles securely together to form a floor that “floats” for greater flexibility, easier replacement and long-term performance. The result? Less mess, less waste and virtually no VOCs, not to mention an environmental footprint that is over 90% lower than that of traditional glue adhesives.



**Intersept®**  
*Mold protection.* Our proprietary preservative, Intersept, protects our modular carpet against mold growth and odor-causing bacteria—guaranteed. Intersept treated carpet, with proper maintenance, shows no mold or bacterial growth when tested per the ASTM E2471 Standard Test Method. Intersept is EPA approved for safe use in carpet, water insoluble and contains no halogens, heavy metals, phenols or formaldehyde.



**ReEntry®**  
*Recyclable is now a reality.* Through our ReEntry program and partnerships with our fiber suppliers and recycling centers throughout North America, separated Type 6 and 6,6 nylon are recycled into new 6 and 6,6 nylon while separated GlasBac®, GlasBacRE, similar competitive backings and our own LVT are recycled into new GlasBacRE non-virgin PVC backing using our Cool Blue™ technology. The result? Products with up to 89% total recycled content, including as much as 27% post-consumer content.



**Sustainable Choice**  
*Environmental responsibility.* More than 95% of Interface products manufactured in the Americas carry the GreenCircle Certified Environmental Facts label, which has verified that standard Interface products are manufactured using 99% renewable energy and offer a minimum of 66% and 80% total recycled content when backed with GlasBac and GlasBacRE backing respectively.

**Samples**  
Order samples at [www.interface.com](http://www.interface.com). You'll receive email order confirmations, 24/7 access to order status and more. Not near a computer? You can also request samples by calling one of the numbers below.

United States 1.877.605.1500	Canada 1.866.398.3192
Brazil + 55 11 2196 0900	Latin America + 52 55 6395 5100

**[www.interface.com](http://www.interface.com)**  
Register at [www.interface.com](http://www.interface.com) to:

- Browse products and order samples
- View carpet in a variety of room scenes
- Browse floor designs, change colors, view as a grid or in a room, download and share
- Use our LEED Calculator
- Check order status and inventory availability
- Sign up to get the latest information on Interface products and news

**InterCircle™ Sample Return**  
Help us close the loop on the carpet sampling process. Through our InterCircle Sample Return program, sample materials stay out of the landfill and are re-used as samples until it is time to recycle them into new carpet. By reducing sample production material and diverting old materials from the landfill, we can reduce our overall environmental footprint.

Call 1.877.605.1500 (U.S.) or 1.866.398.3192 (Canada) to order a sample return bag with a prepaid return label.

Third Party Certification



**Bureau Veritas** – All Interface flooring sold globally is third party verified carbon neutral.



**Environmental Product Declaration (EPD)** – A statement of product ingredients and environmental impacts over the entire life cycle of a product. A comprehensive life cycle assessment (LCA) is performed to ISO standards to develop an EPD, after which both the EPD and LCA must be third party verified.



**Sustainable Assessment for Carpet** – The only carpet sustainability standard in North America that evaluates the environmental impact of carpet for its entire lifecycle.



**CRI Green Label Plus** – An independent testing program that identifies carpet and adhesives with very low emissions of VOCs to help improve indoor air quality.

All product specifications reflect averages derived from product sample testing, are subject to normal manufacturing and testing tolerances and inherent pattern variances, and may be changed without notice. For more information about these and other important attributes of the product(s) described herein, including recycled content and product warranty information, please see [www.interface.com/disclaimer](http://www.interface.com/disclaimer).



Printed on 50% post consumer waste (PCW) fiber manufactured using wind power.

We have tried our very best to accurately represent product colors. However, due to the nature of printed materials, color of actual products may vary slightly. Please request a sample to see actual product color.



PLEASE RECYCLE