



DESIGN YOUR FLOOR!

RMS 506 combines the simple sophistication of vertical stripes with carved, undulating bands of texture. Available in six standard, earthy neutrals and both 25cm x 1m and 50cm x 1m planks, RMS 506 is a new twist on the soft, “wood” plank. Installs Ashlar or Herringbone.

A
PRODUCT: RMS 506
SIZE: 25cm x 1m
COLOR: Beech
INSTALLATION: Ashlar

COVER
PRODUCT: RMS 506
SIZE: 25cm x 1m and 50cm x 1m
COLOR: Birch and Ebony
INSTALLATION: Herringbone

Product

RMS 506™

PRODUCT SPECIFICATIONS

RMS 506 Style: 139620AK00 (25cm x 1m) Style: 139620AB00 (50cm x 1m)
Backing System GlasBac® Tile
Yarn System 100% Recycled Content Type 6 Nylon
Yarn Manufacturer Aquafil
Color System 100% Solution Dyed
Construction Tufted Sheared
Preservative Protection Intersept®
Soil / Stain Protection Protekt2®
Pile Thickness 0.160 in., 4.1 mm
Pile Density 4,950
Total Recycled Content 61%
Installation Ashlar, Herringbone
Indoor Air Quality CRI Green Label Plus #GLP0820



HERRINGBONE



HERRINGBONE

COLORLINE



103585 BIRCH



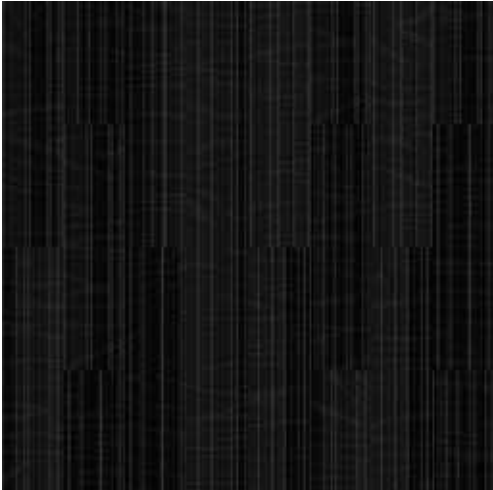
103584 BEECH



100643 PECAN



100642 MAPLE

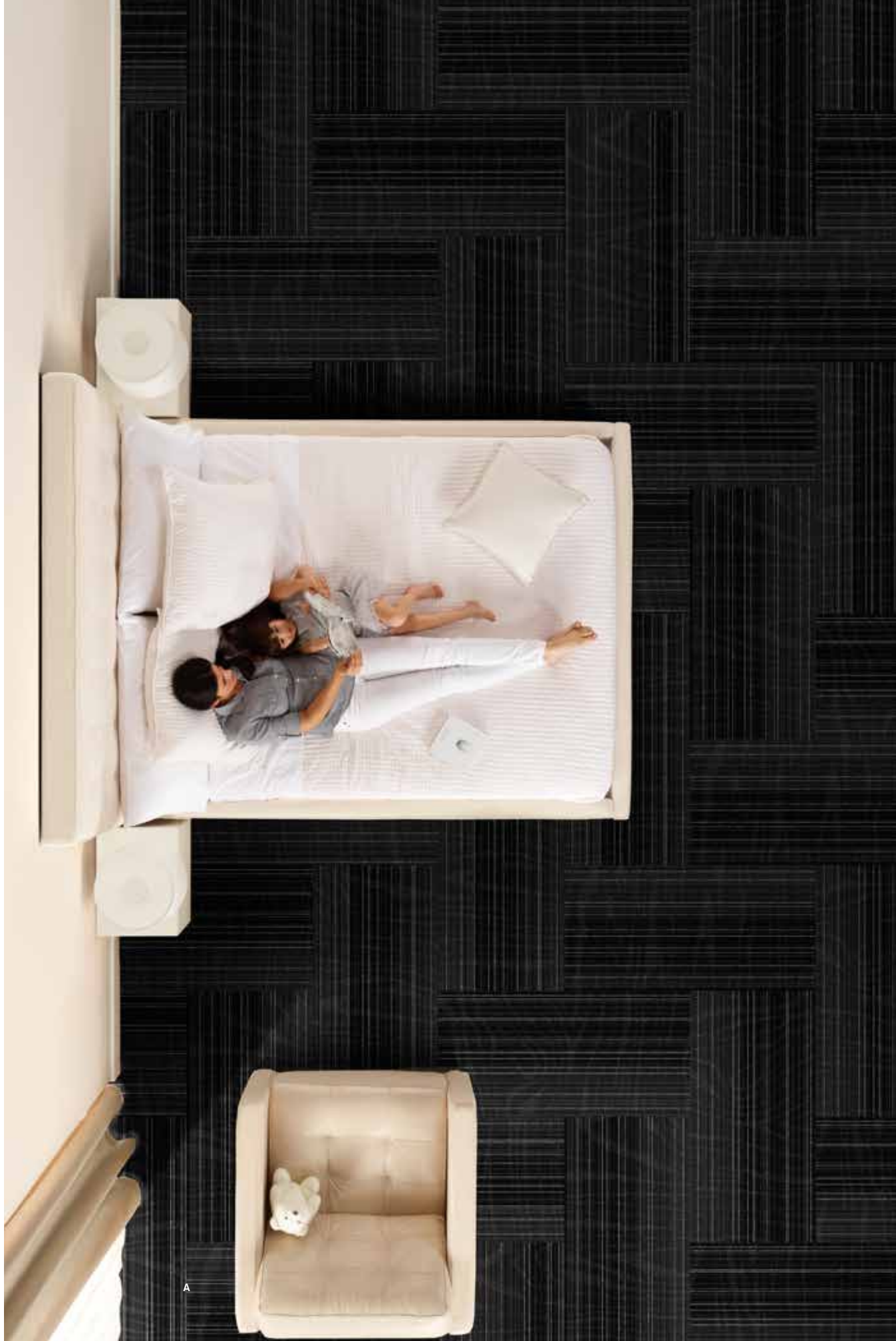


103588 EBONY



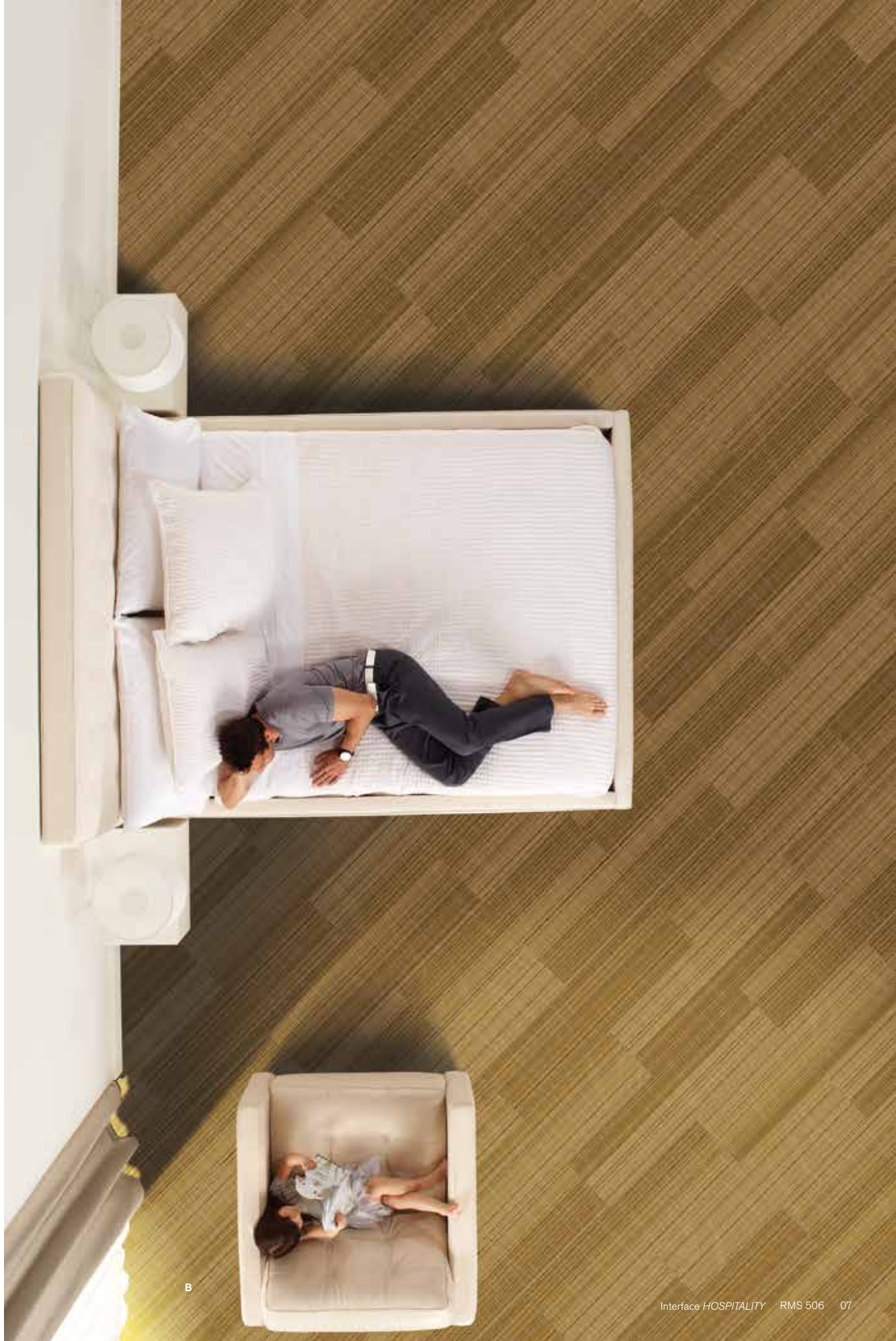
103586 WILLOW

A
 PRODUCT: RMS 506
 SIZE: 50cm x 1m
 COLOR: Ebony
 INSTALLATION: Herringbone



A

B
 PRODUCT: RMS 506
 SIZE: 25cm x 1m
 COLOR: Maple
 INSTALLATION: Ashlar



B

A PRODUCT: RMS 506
SIZE: 25cm x 1m
COLOR: Maple
INSTALLATION: Herringbone

B PRODUCT: RMS 506
SIZE: 25cm x 1m
COLOR: Pecan
INSTALLATION: Herringbone





WHY MODULAR CARPET TILE?



Flexibility

Keep Your Floor Beautiful. Modular carpet tile allows you to play with pattern and design without having to special order carpet sizes. And the same flexibility that lets you create your floor helps you keep it looking good because in-house staff can easily replace individual tiles that become damaged or heavily soiled—no down time or outside contractors required.



TacTiles®

No Glue Installation. Installation or reconfiguration with our glue-free TacTiles installation system means there's no glue smell and no drying time. Guests can use the room as soon as the last piece is laid and all they'll notice is a beautiful floor.



Intersept®

Mold Protection. No matter what's spilled on the floor, our proprietary preservative, Intersept®, protects our modular carpet against the growth of odor-causing bacteria—guaranteed. With proper maintenance Intersept treated carpet safely and effectively inhibits the growth of mold and other bacteria so your floors are always fresh.



Sustainable Choice

Environmental Responsibility. Interface is the industry's first to earn an EPD (Environmental Product Declaration), which evaluates consistent factors based on full lifecycle assessment (LCA). In addition, all of our products with GlasBac®, GlasBacRE and NexStep® backings meet NSF/ANSI 140 Sustainable Assessment for Carpet.



Cool Carpet™
Our third party verified carbon offset program zeroes out all greenhouse gas (GHG) emissions associated with the entire lifecycle of your carpet.

Sustainable Assessment for Carpet
The only carpet sustainability standard in North America that evaluates the environmental impact of carpet for its entire lifecycle.

CRI Green Label Plus
An independent testing program that identifies carpet and adhesives with very low emissions of VOCs to help improve indoor air quality.

Environmental Product Declaration (EPD)
A statement of product ingredients and environmental impacts over the entire lifecycle of a product. A comprehensive life cycle assessment (LCA) is performed to ISO standards to develop an EPD, after which both the EPD and the LCA must be third party verified.

A
PRODUCT: RMS 506
SIZE: 25cm x 1m
COLOR: Birch
INSTALLATION: Pattern by Tile

B
PRODUCT: RMS 506
SIZE: 50cm x 1m
COLOR: Ebony
INSTALLATION: Pattern by Tile



DESIGN YOUR FLOOR!

www.interfacehospitality.com

United States Headquarters

1503 Orchard Hill Road
LaGrange, GA 30240
1.800.336.0225 ext.6511

Canadian Headquarters

233 Lahr Drive
Belleville, ON K8N 5S2
1.800.267.2149 ext.2128

Latin America Headquarters

Rua Surubim, 577 - Conjuntos
73/74 7º Andar
04571-050 - São Paulo - SP
+ 55 11 2196 0900

08/2013
CIM# IFS00634

Interface *Hospitality*

Mission Zero and the Mission Zero logo are registered trademarks of Interface, Inc.

