



COVER

PRODUCT: RMS 507 & RMS 508

SIZE: 25cm x 1m

COLOR: Taffy

INSTALLATION: Ashlar

A

PRODUCT: RMS 507

SIZE: 25cm x 1m

COLOR: Shell

INSTALLATION: Ashlar

B

PRODUCT: RMS 507

SIZE: 25cm x 1m

COLOR: Clove

INSTALLATION: Ashlar

C

PRODUCT: RMS 507

SIZE: 25cm x 1m

COLOR: Seal

INSTALLATION: Ashlar



A

B

C

PRODUCT SPECIFICATIONS

RMS 507

Style: 125530AK00

Backing System

GlasBac® Tile

Yarn System

100% Recycled Content Type 6 Nylon

Yarn Manufacturer

Aquafil

Color System

100% Solution Dyed

Construction

Tufted Cut & Loop

Lifetime Antimicrobial

Intersept®

Soil / Stain Protection

Protekt²®

Pile Thickness

0.115 in., 2.9 mm

Pile Density

5,009

Total Recycled Content

61%

Installation

Ashlar, Herringbone

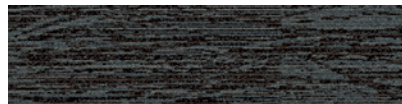
CRI Green Label Plus

GLP0820

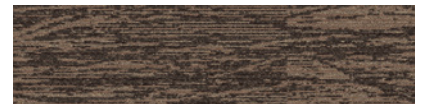


ASHLAR

COLORLINE



105024 SEAL



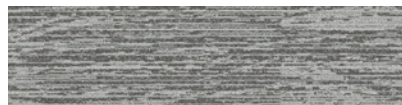
105025 CLOVE



105026 AGAVE



105027 SHELL



104606 TAFFY



104608 BUTTERSCOTCH



105028 THYME



105029 BISCUIT

A
PRODUCT: RMS 508
SIZE: 25cm x 1m
COLOR: Biscuit
INSTALLATION: Ashlar

B
PRODUCT: RMS 507
SIZE: 25cm x 1m
COLOR: Butterscotch
INSTALLATION: Ashlar



A

B

PRODUCT SPECIFICATIONS

RMS 508

Style: 125540AK00

Backing System

GlasBac® Tile

Yarn System

100% Recycled Content Type 6 Nylon

Yarn Manufacturer

Aquafil

Color System

100% Solution Dyed

Construction

Tufted Cut & Loop

Lifetime Antimicrobial

Intersept®

Soil / Stain Protection

Protekt2®

Pile Thickness

0.115 in., 2.9 mm

Pile Density

5,009

Total Recycled Content

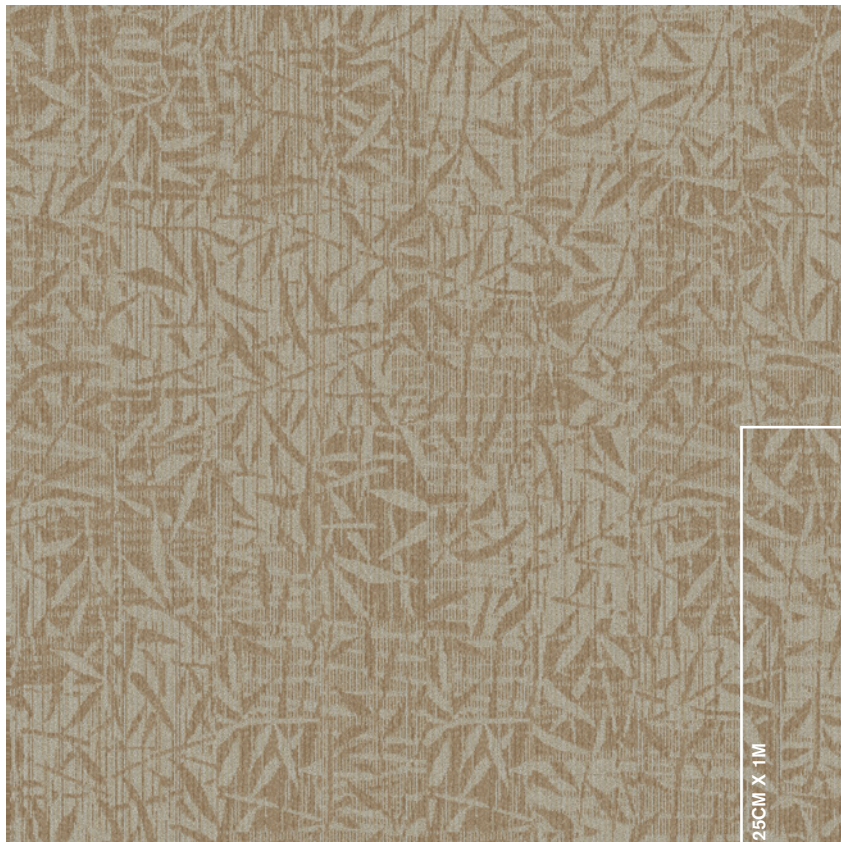
61%

Installation

Ashlar, Herringbone

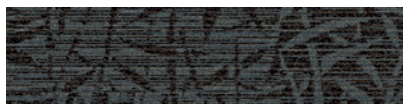
CRI Green Label Plus

GLP0820



ASHLAR

COLORLINE



105030 SEAL



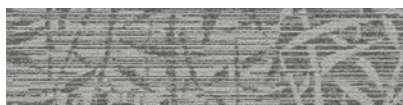
105031 CLOVE



105032 AGAVE



105033 SHELL



104611 TAFFY



104613 BUTTERSCOTCH



105034 THYME



105035 BISCUIT

A
PRODUCT: RMS 508
SIZE: 25cm x 1m
COLOR: Seal
INSTALLATION: Ashlar

B
PRODUCT: RMS 507
SIZE: 25cm x 1m
COLOR: Seal
INSTALLATION: Ashlar

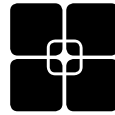


WHY MODULAR CARPET TILE?



Flexibility

Keep Your Floor Beautiful. Modular carpet tile allows you to play with pattern and design without having to special order carpet sizes. And the same flexibility that lets you create your floor helps you keep it looking good because in-house staff can easily replace individual tiles that become damaged or heavily soiled—no down time or outside contractors required.



TacTiles®

No Glue Installation. Installation or reconfiguration with our glue-free TacTiles installation system means there's no glue smell and no drying time. Guests can use the room as soon as the last piece is laid and all they'll notice is a beautiful floor.



Intersept®

Mold Protection. No matter what's spilled on the floor, our proprietary preservative, Intersept®, protects our modular carpet against the growth of odor-causing bacteria—guaranteed. With proper maintenance Intersept treated carpet safely and effectively inhibits the growth of mold and other bacteria so your floors are always fresh.



Less Waste

Save Money. Interface Hospitality's carpet tile averages just 3.9% installation waste compared to as much as 18% or more with patterned roll carpet. Use our non directional styles with an average of 1.5% waste and save even more. That means more of your flooring investment stays on the floor—not in a dumpster.



Sustainable Choice

Environmental Responsibility. Interface was the industry's first to earn an EPD (Environmental Product Declaration), which evaluates consistent factors based on full lifecycle assessment (LCA). In addition, all of our products with GlasBac®, GlasBacRE and NexStep® backings meet NSF/ANSI 140 Sustainable Assessment for Carpet.



InterComfort™

Comfort underfoot. Offer guests the additional comfort and acoustical benefits of a cushion underlay with InterComfort, Interface Hospitality's recyclable polyethylene cushion that installs easily with our patented TacTiles® glue-free installation system. There's no sticky mess or potential damage to your subfloor. InterComfort is available in two formats—InterComfort PS for public spaces and InterComfort GR for guest rooms.

cool carpet™



Cool Carpet™

Our third party verified carbon offset program zeroes out all greenhouse gas (GHG) emissions associated with the entire lifecycle of your carpet.

Sustainable Assessment for Carpet

The only carpet sustainability standard in North America that evaluates the environmental impact of carpet for its entire lifecycle.

CRI Green Label Plus

An independent testing program that identifies carpet and adhesives with very low emissions of VOCs to help improve indoor air quality.

Environmental Product Declaration (EPD)

A statement of product ingredients and environmental impacts over the entire lifecycle of a product. A comprehensive life cycle assessment (LCA) is performed to ISO standards to develop an EPD, after which both the EPD and the LCA must be third party verified.



DESIGN YOUR FLOOR!

www.interfacehospitality.com

United States Headquarters

1503 Orchard Hill Road
LaGrange, GA 30240
1.800.336.0225 ext.6511

Canadian Headquarters

233 Lahr Drive
Belleville, ON K8N 5S2
1.800.267.2149 ext.2128

Mexican Headquarters

Montes Urales # 415 Piso 6
Col. Lomas de Chapultepec
México City, D.F. 11000
+ 52 55 6395 5100

Latin American Headquarters

Rua Surubim, 577 - Conjuntos
73/74 7º Andar
04571-050 - São Paulo - SP
Brazil
+ 55 11 2196 0900

05/2015
IFS00687

Interface *Hospitality*