



G01

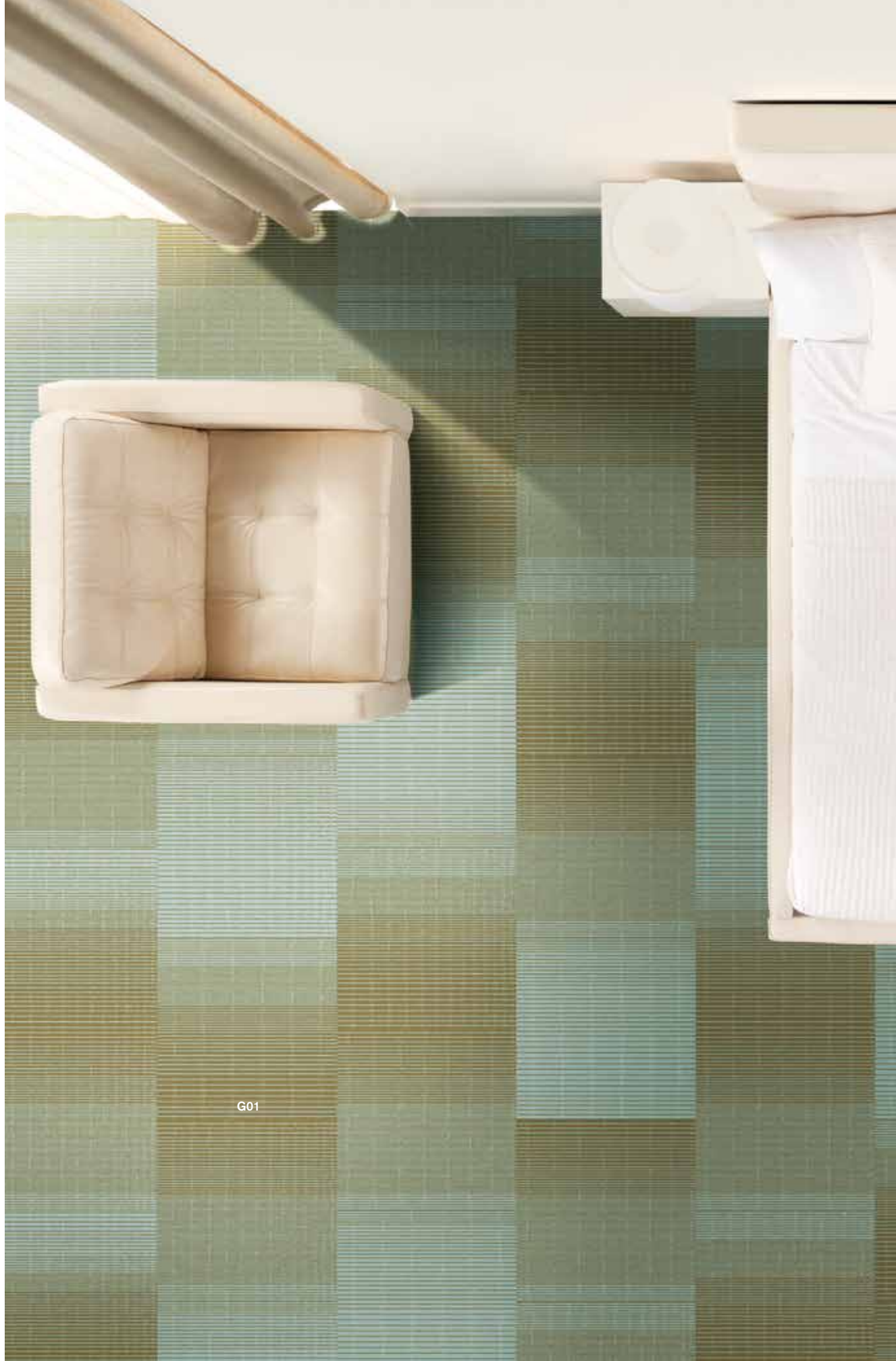
PRODUCT: RMS 303
SIZE: 50cm
CUSTOM COLOR: 3954-001
INSTALLATION: Brick

COVER

PRODUCT: RMS 303
SIZE: 50cm
CUSTOM COLOR: 3954-002
INSTALLATION: Brick

COVER

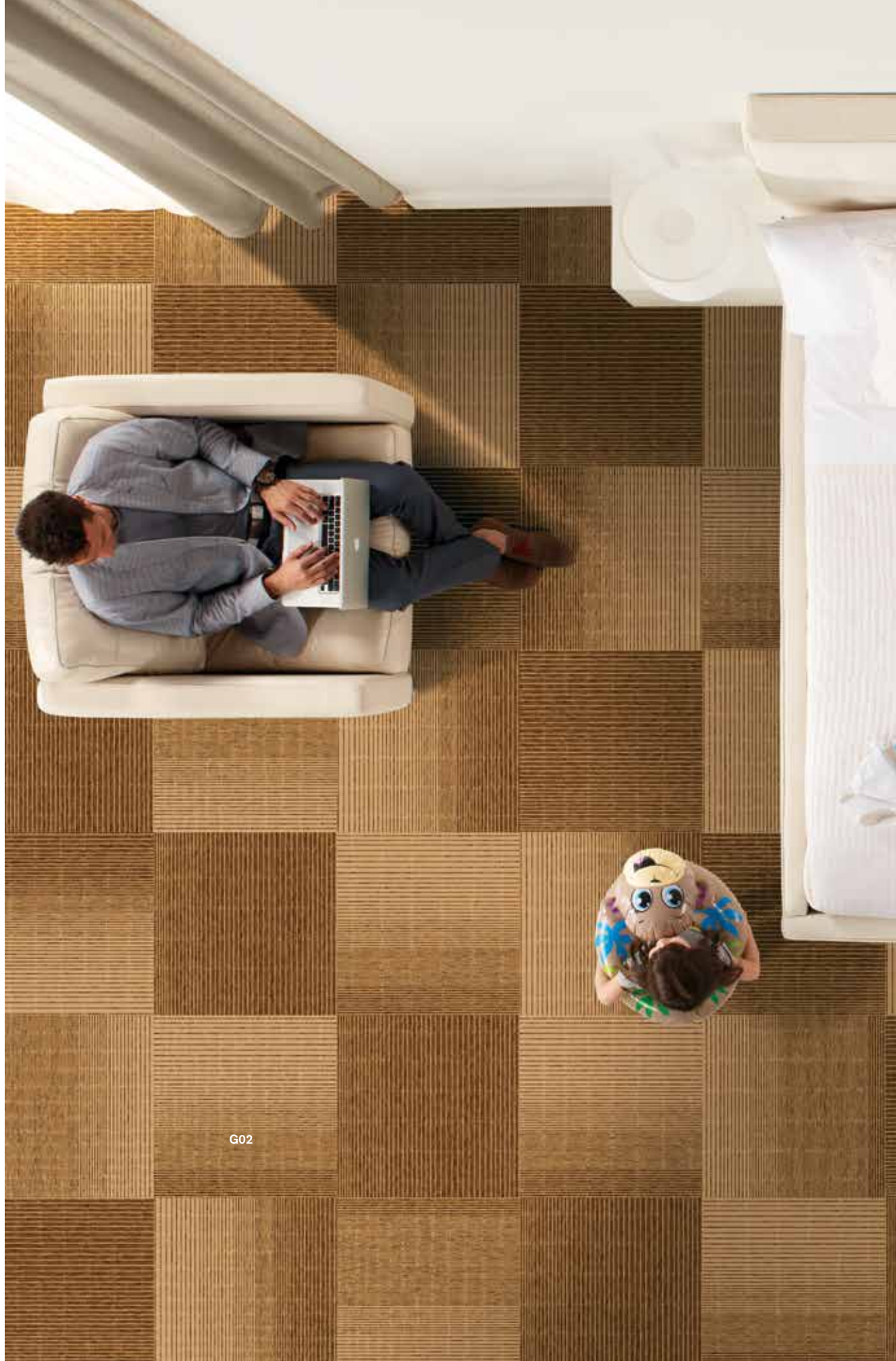
PRODUCT: RMS 303
SIZE: 50cm
CUSTOM COLOR: 3954-003
INSTALLATION: Brick



G01



G02
PRODUCT: RMS 303
SIZE: 50cm
CUSTOM COLOR: 3954-003
INSTALLATION: Quarter-Turn



G02



G03
PRODUCT: RMS 303
SIZE: 50cm
CUSTOM COLOR: 3964-004
INSTALLATION: Quarter-Turn

G04
PRODUCT: RMS 202™
SIZE: 50cm
CUSTOM COLOR: 3964-010
INSTALLATION: Quarter-Turn

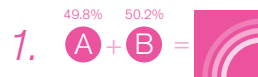




D.Y.F.™

DESIGN YOUR FLOOR!

RMS 303 features vertical stripes set off with regular, horizontal bands of texture. Install brick or quarter-turn.



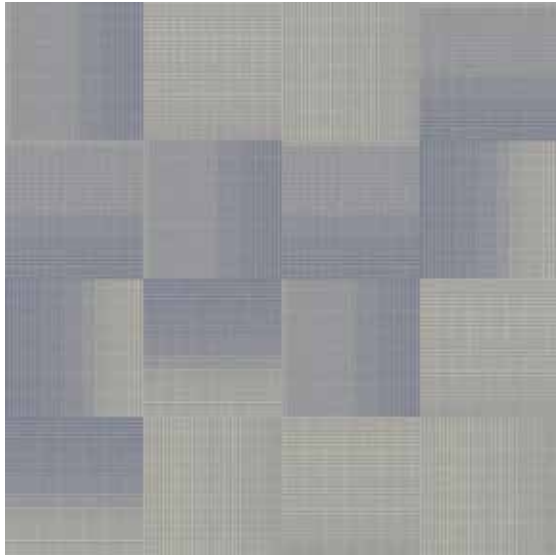
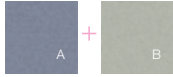
Choose two colors from the Monochrome™ palette or work with your rep to find perfect hues for your project. The key below demonstrates how each color appears in a final design.

Solids

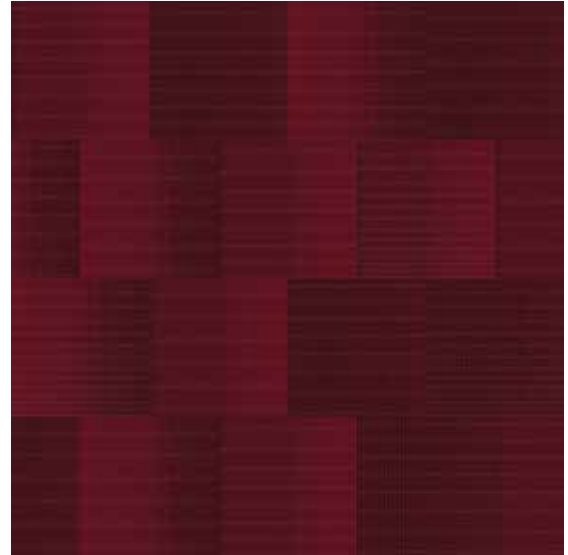


When you have colored the pattern, we can create a sample in your palette. Contact your rep to request a sample.

Individual Yarn Placement



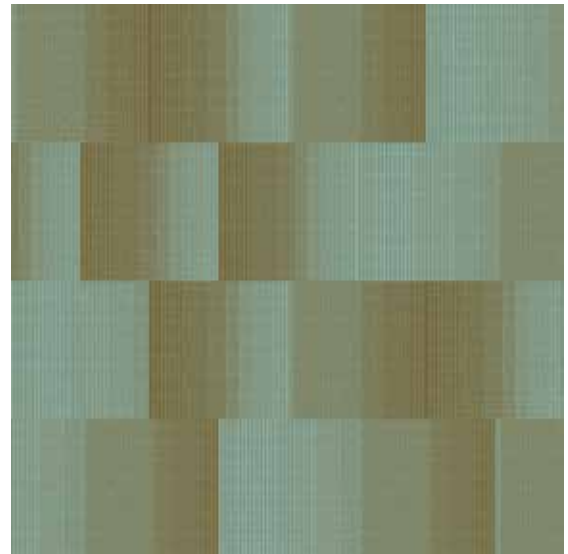
CUSTOM COLOR: 3954-005



CUSTOM COLOR: 3954-006



CUSTOM COLOR: 3954-003



CUSTOM COLOR: 3954-001

RMS 303

CUSTOM COLOR IDENTIFICATION

Products	Color #	A	B	C	D
RMS 303	3954-001	39822	40211		
	3954-002	39801	40016		
	3954-003	40067	40023		
	3954-004	34157	39888		
	3954-005	40204	39830		
	3954-006	34153	40107		
	3954-007	40169	40177		
	3954-008	34157	39937		
	3954-009	39801	39833		
	3954-010	40041	40169		
	3954-011	40180	40153		
	3954-012	39871	40230		
RMS 202	3964-010	40177	40154	39895	39887

PRODUCT SPECIFICATIONS

RMS 303

Style: 1395402500 (50cm x 50cm)

Backing System

GlasBac® Tile

Yarn System

100% Recycled Content Type 6 Nylon

Yarn Manufacturer

Aquafil

Color System

100% Solution Dyed

Construction

Tufted Loop Cut Loop

Preservative Protection

Intersept®

Soil/Stain Protection

Protekt²®

Yarn Weight

21 oz

Pile Thickness

0.145 in., 3.7 mm

Pile Density

5,214

Total Recycled Content

63%

Installation

Brick, Quarter-Turn

Indoor Air Quality

CRI Green Label Plus #GLP0820

WHY MODULAR CARPET TILE?



Flexibility

Keep Your Floor Beautiful. Modular carpet tile allows you to play with pattern and design without having to special order carpet sizes. And the same flexibility that lets you create your floor helps you keep it looking good because in-house staff can easily replace individual tiles that become damaged or heavily soiled—no down time or outside contractors required.



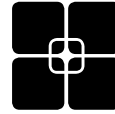
Intersept®

Mold Protection. No matter what's spilled on the floor, our proprietary preservative, Intersept, protects our modular carpet against the growth of odor-causing bacteria—guaranteed. With proper maintenance Intersept treated carpet safely and effectively inhibits the growth of mold and other bacteria so your floors are always fresh.



Less Waste

Save Money. Interface Hospitality's carpet tile averages just 3.9% installation waste compared to as much as 18% or more with patterned roll carpet. Use our non directional styles with an average of 1.5% waste and save even more. That means more of your flooring investment stays on the floor—not in a dumpster.



TacTiles®

No Glue Installation. Installation or reconfiguration with our glue-free TacTiles installation system means there's no glue smell and no drying time. Guests can use the room as soon as the last piece is laid and all they'll notice is a beautiful floor.



Sustainable Choice

Environmental Responsibility. Interface was the industry's first to earn an EPD (Environmental Product Declaration), which evaluates consistent factors based on full lifecycle assessment (LCA). In addition, all of our products with GlasBac®, GlasBacRE and NexStep® backings meet NSF/ANSI 140 Sustainable Assessment for Carpet.

Looking for additional comfort under foot?

Ask about our InterComfort™ carpet underlayment.

cool carpet™



Cool Carpet™

Our third party verified carbon offset program zeroes out all greenhouse gas (GHG) emissions associated with the entire lifecycle of your carpet.

Sustainable Assessment for Carpet

The only carpet sustainability standard in North America that evaluates the environmental impact of carpet for its entire lifecycle.

CRI Green Label Plus

An independent testing program that identifies carpet and adhesives with very low emissions of VOCs to help improve indoor air quality.

Environmental Product Declaration (EPD)

A statement of product ingredients and environmental impacts over the entire lifecycle of a product. A comprehensive life cycle assessment (LCA) is performed to ISO standards to develop an EPD, after which both the EPD and the LCA must be third party verified.



United States Headquarters

1503 Orchard Hill Road
LaGrange, GA 30240
1.800.336.0225 ext.6511

Canadian Headquarters

233 Lahr Drive
Belleville, ON K8N 5S2
1.800.267.2149 ext.2128

Brazilian Headquarters

Rua Surubim, 577 - Conjuntos
73/74 7º Andar
04571-050 - São Paulo - SP
+ 55 11 2196 0900

Latin American Headquarters

Montes Urales # 415 Piso 6
Col. Lomas de Chapultepec
México City, D.F. 11000
Mexico
+ 52 55 6395 5100

05/2014

CIM# IFS00552

