





## COVER

PRODUCT: RMS 102™  
SIZE: 50cm  
COLOR: Palm  
INSTALLATION: Quarter-Turn

## G01

PRODUCT: RMS 102  
SIZE: 50cm  
COLOR: Mushroom  
INSTALLATION: Quarter-Turn

## G02

PRODUCT: Monochrome™  
SIZE: 50cm  
COLOR: Briar  
INSTALLATION: Monolithic

## G03

COLLECTION: Head Over Heels™  
PATTERN: M0736  
SIZE: 50cm  
COLOR: (A) Monochrome, Malt; (B) Monochrome, Secret Garden; (C) Monochrome, Briar  
INSTALLATION: Non Directional





## PRODUCT SPECIFICATIONS

### RMS 102

Style: 1271902500 (50cm x 50cm)

### Backing System

GlasBac® Tile

### Yarn System

100% Recycled Content Type 6 Nylon

### Yarn Manufacturer

Aquafil

### Color System

100% Solution Dyed

### Construction

Tufted Pattern Loop

### Preservative Protection

Intersept®

### Soil / Stain Protection

Protekt<sup>2</sup>®

### Pile Thickness

0.139 in., 3.5 mm

### Pile Density

5,439

### Total Recycled Content

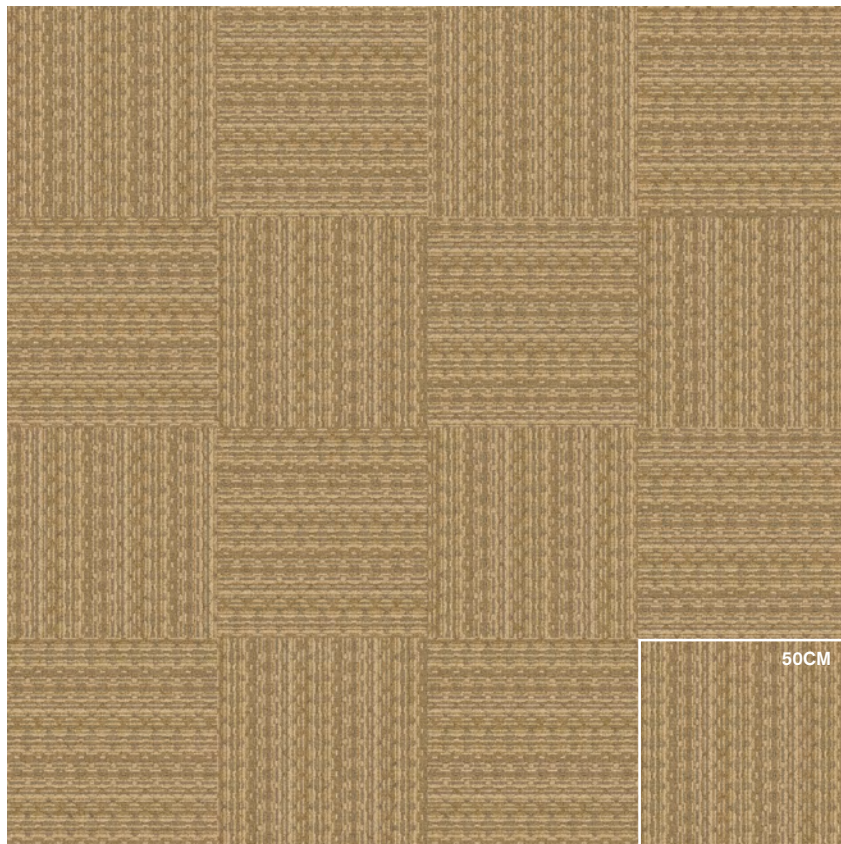
61%

### Installation

Quarter-Turn

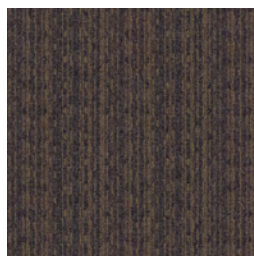
### CRI Green Label Plus

GLP0820



QUARTER-TURN

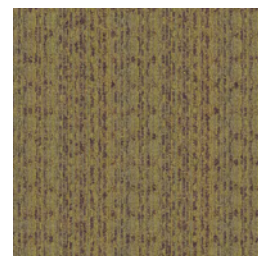
## COLORLINE



9623 WALNUT



102332 MUSHROOM



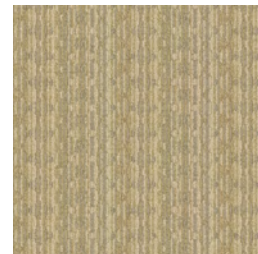
102333 PALM



103541 WHEAT



103543 QUARTZ



103545 CYPRESS



**G04**  
PRODUCT: RMS 103™  
SIZE: 50cm  
COLOR: Wheat  
INSTALLATION: Quarter-Turn

**G05**  
PRODUCT: RMS 103  
SIZE: 50cm and 50cm Half Tiles  
COLOR: Cypress  
INSTALLATION: Quarter-Turn



G04

G05



## PRODUCT SPECIFICATIONS

### RMS 103

Style: 1272002500 (50cm x 50cm)

### Backing System

GlasBac® Tile

### Yarn System

100% Recycled Content Type 6 Nylon

### Yarn Manufacturer

Aquafil

### Color System

100% Solution Dyed

### Construction

Tufted Pattern Loop

### Preservative Protection

Intersept®

### Soil / Stain Protection

Protekt<sup>2</sup>®

### Pile Thickness

0.144 in., 3.7 mm

### Pile Density

5,500

### Total Recycled Content

61%

### Installation

Quarter-Turn

### CRI Green Label Plus

GLP0820



QUARTER-TURN

## COLORLINE



9624 WALNUT



102334 MUSHROOM



102335 PALM



103548 WHEAT



103550 QUARTZ



103552 CYPRESS



**G07**

PRODUCT: RMS 103

SIZE: 50cm

COLOR: Wheat

INSTALLATION: Quarter-Turn

**G06**

PRODUCT: RMS 102

SIZE: 50cm

COLOR: Wheat

INSTALLATION: Quarter-Turn



G06



G07



## WHY MODULAR CARPET TILE?



### Flexibility

Keep Your Floor Beautiful. Modular carpet tile allows you to play with pattern and design without having to special order carpet sizes. And the same flexibility that lets you create your floor helps you keep it looking good because in-house staff can easily replace individual tiles that become damaged or heavily soiled—no down time or outside contractors required.



### TacTiles®

No Glue Installation. Installation or reconfiguration with our glue-free TacTiles installation system means there's no glue smell and no drying time. Guests can use the room as soon as the last piece is laid and all they'll notice is a beautiful floor.



### Intersept®

Mold Protection. No matter what's spilled on the floor, our proprietary preservative, Intersept®, protects our modular carpet against the growth of odor-causing bacteria—guaranteed. With proper maintenance Intersept treated carpet safely and effectively inhibits the growth of mold and other bacteria so your floors are always fresh.



### Sustainable Choice

Environmental Responsibility. InterfaceFLOR is the industry's first to earn an EPD (Environmental Product Declaration), which evaluates consistent factors based on full lifecycle assessment (LCA). In addition, all of our products with GlasBac®, GlasBacRE and NexStep® backings meet NSF/ANSI 140 Sustainability Assessment for Carpet.



### Less Waste

Save Money. Interface HOSPITALITY's carpet tile averages just 3.9% installation waste compared to as much as 18% or more with patterned roll carpet. Use our non directional styles with an average of 1.5% waste and save even more. That means more of your flooring investment stays on the floor—not in a dumpster.

cool carpet™



#### Cool Carpet™

Our third party verified carbon offset program zeroes out all greenhouse gas (GHG) emissions associated with the entire lifecycle of your carpet.

#### Sustainability Assessment for Carpet

The only carpet sustainability standard in North America that evaluates the environmental impact of carpet for its entire lifecycle.

#### CRI Green Label Plus

An independent testing program that identifies carpet and adhesives with very low emissions of VOCs to help improve indoor air quality.

#### Environmental Product Declaration (EPD)

A statement of product ingredients and environmental impacts over the entire lifecycle of a product. A comprehensive life cycle assessment (LCA) is performed to ISO standards to develop an EPD, after which both the EPD and the LCA must be third party verified.



DESIGN YOUR FLOOR!

**[www.interfacehospitality.com](http://www.interfacehospitality.com)**

**United States Headquarters**

1503 Orchard Hill Road  
LaGrange, GA 30240  
1.800.336.0225 ext.6511

**Canadian Headquarters**

233 Lahr Drive  
Belleville, ON K8N 5S2  
1.800.267.2149 ext.2128

**Latin American Headquarters**

Rua Surubim, 577 - Conjuntos  
73/74 7º Andar  
04571-050 - São Paulo - SP  
+ 55 11 2196 0900

CIM# IFS00586 06/2013

**Interface***Hospitality*

Mission Zero and the Mission Zero logo are registered trademarks of Interface, Inc.

