





www.interfacehospitality.com

United States Headquarters
1280 West Peachtree Street NW
Atlanta, GA 30309
1.800.634.6032

Canadian Headquarters
233 Lahr Drive
Belleville, ON K8N 5S2
1.800.267.2149 ext.52128

Brazilian Headquarters
Rua Surubim, 577 - Conjuntos
73/74 7º Andar
04571-050 - São Paulo - SP
+ 55 11 2196 0900

Latin American Headquarters
Montes Urales # 415 Piso 6
Col. Lomas de Chapultepec
México City, D.F. 11000
Mexico
+ 52 55 6395 5100

11/2019
CIM# IFS00846

Interface® Hospitality



GUEST ROOMS COLLECTION

Interface® Hospitality

Contents

Painted Light | 04

Windswept Terrain | 14

Winter Chill | 24

Morning Haze | 32

Specifications | 42

Index | 52

Why Modular Flooring | 53

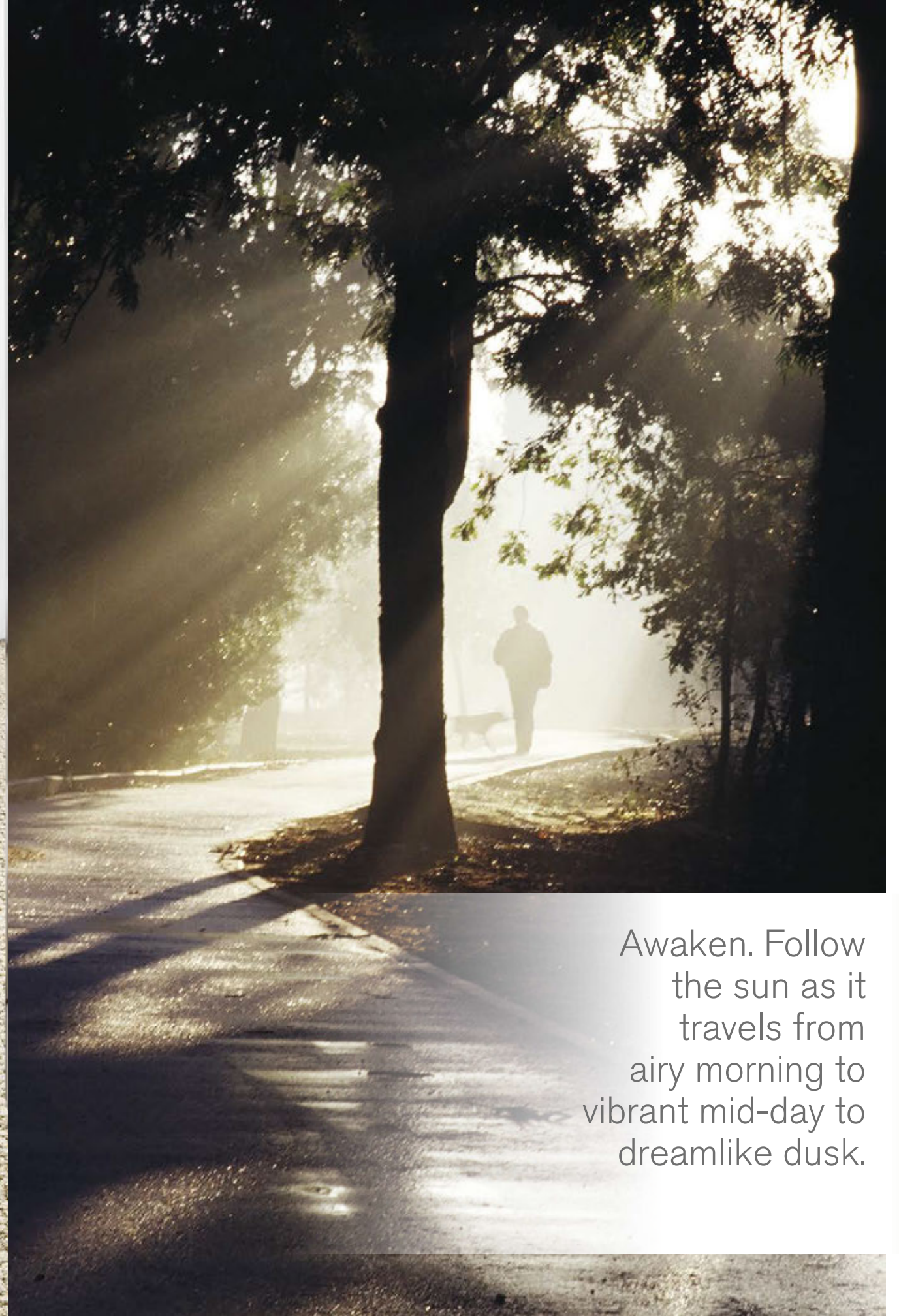
Painted Light	04
Windswept Terrain	14
Winter Chill	24
Morning Haze	32

No matter how far away we may travel, we all desire a quiet place to rest. A place to unwind. A place to recharge. A place to remind us of home—different, but still familiar.

Why not transform that “home away from home” feeling with a biophilic point of view? The natural world is restorative to the mind and the body, and we approach the design of a guest room in much the same way—a private, calming retreat that allows for connection, introspection, and relaxation.

The Guest Rooms Collection is a study in how texture, pattern and color can influence the experience of a space. We have assembled 19 of our standard RMS carpet styles into color palettes that evoke four distinct shades of nature. Pair with our LVT as an inset area rug, or play with differing textures, patterns and custom colors for a unique guest room floor.





Awaken. Follow
the sun as it
travels from
airy morning to
vibrant mid-day to
dreamlike dusk.

Painted Light



PAGE 2
PRODUCT: RMS 509
SIZE: 25cm x 1m
COLOR: Beech
INSTALLATION: Ashlar

PAGE 2
PRODUCT: Textured Woodgrains
SIZE: 25cm x 1m
COLOR: Distressed Walnut
INSTALLATION: Ashlar

PAGE 4
PRODUCT: RMS 607
SIZE: 50cm x 50cm
COLOR: Ivory
INSTALLATION: Monolithic

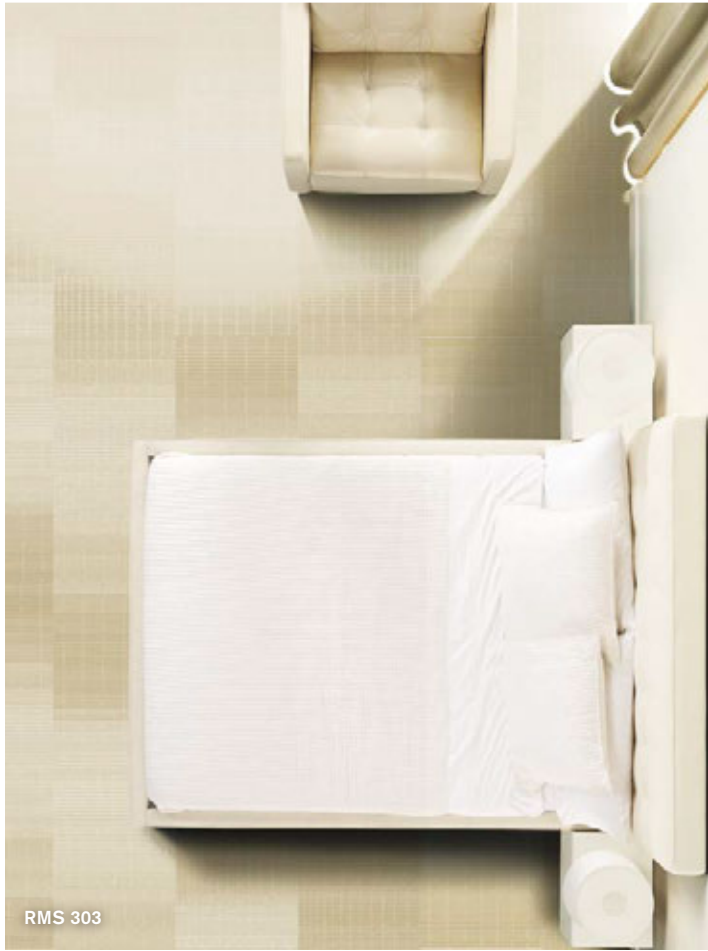
A
PRODUCT: RMS 510
SIZE: 25cm x 1m
COLOR: Tropical Jungle
INSTALLATION: Ashlar

B
PRODUCT: Natural Woodgrains
SIZE: 25cm x 1m
COLOR: Beech
INSTALLATION: Ashlar



RMS 202

LVT



RMS 303



SWTS 110



LVT

On Line

RMS 508



RMS 607

LVT



RMS 509



RMS 103

RMS 607

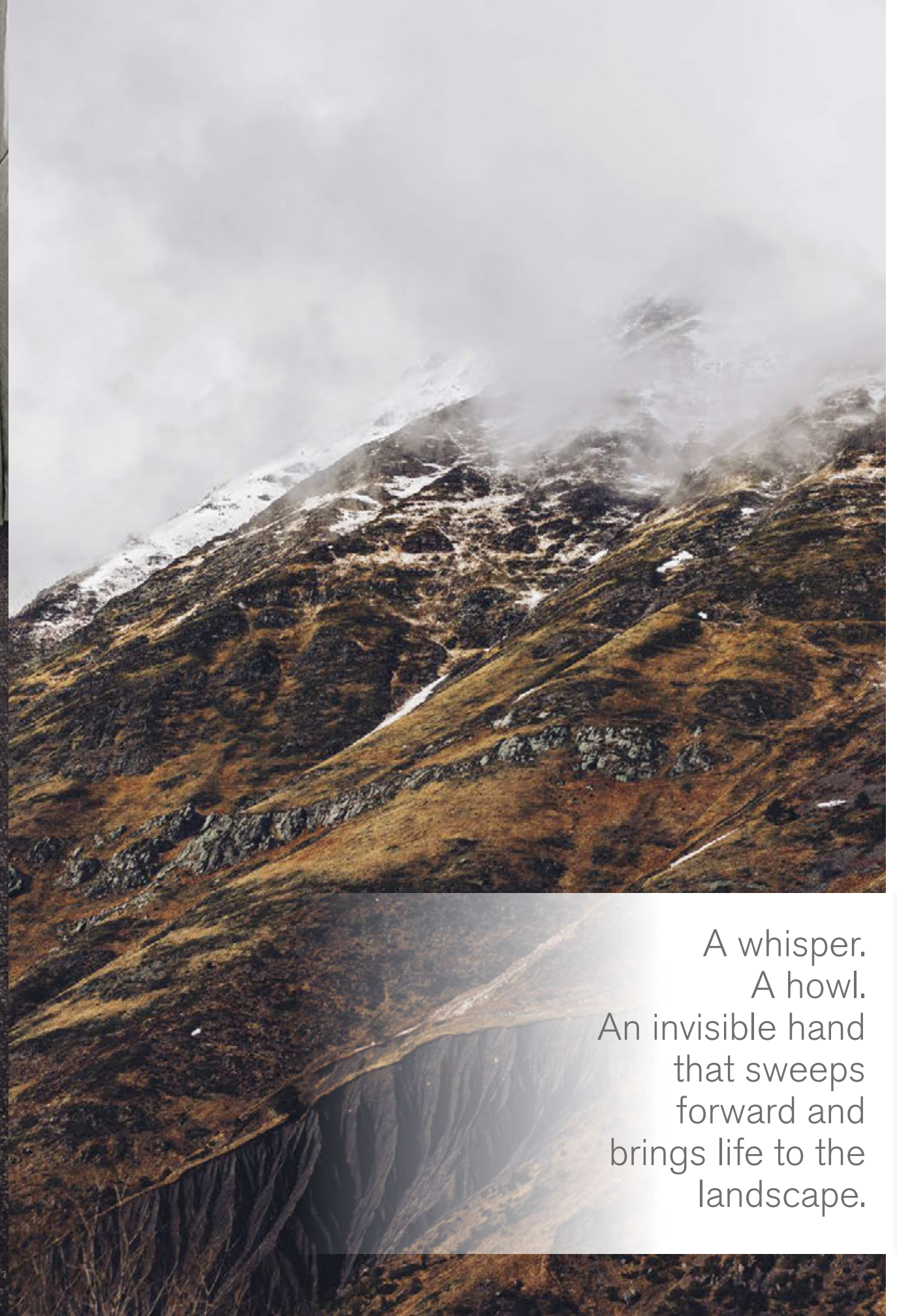
LVT



LVT

RMS 102





A whisper.
A howl.
An invisible hand
that sweeps
forward and
brings life to the
landscape.

Windswept Terrain





RMS 103

RMS 702

LVT



RMS506



RMS 507

LVT



LVT

RMS 702

RMS 704

RMS 702 RMS 703 RMS 705



RMS 703

On Line

RMS 510



LVT

RMS 702

RMS 702

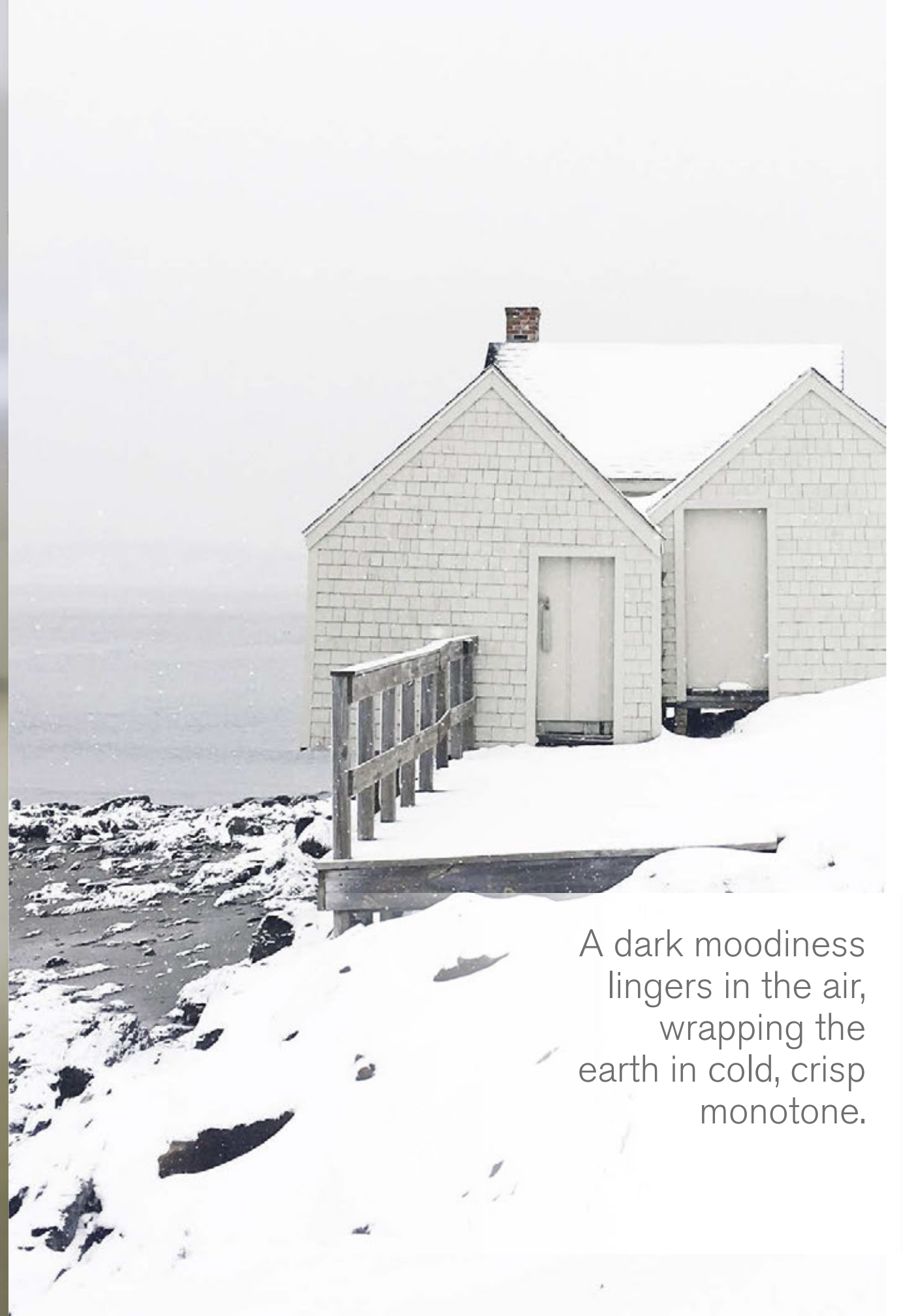
RMS 703



RMS 702

RMS 509





A dark moodiness
lingers in the air,
wrapping the
earth in cold, crisp
monotone.

Winter Chill



PAGE 24
PRODUCT: RMS 511
SIZE: 25cm x 1m
COLOR: Grey Shimmer
INSTALLATION: Ashlar

A
PRODUCT: RMS 706
SIZE: 25cm x 1m
COLOR: Smokey
INSTALLATION: Ashlar

B
PRODUCT: Natural Woodgrains
SIZE: 25cm x 1m
COLOR: Madagascar
INSTALLATION: Ashlar



RMS 703

On Line

RMS 703



RMS 511

RMS 703



RMS 701





RMS 704

RMS 510



RMS 510

On Line

RMS 702



RMS 506



LVT

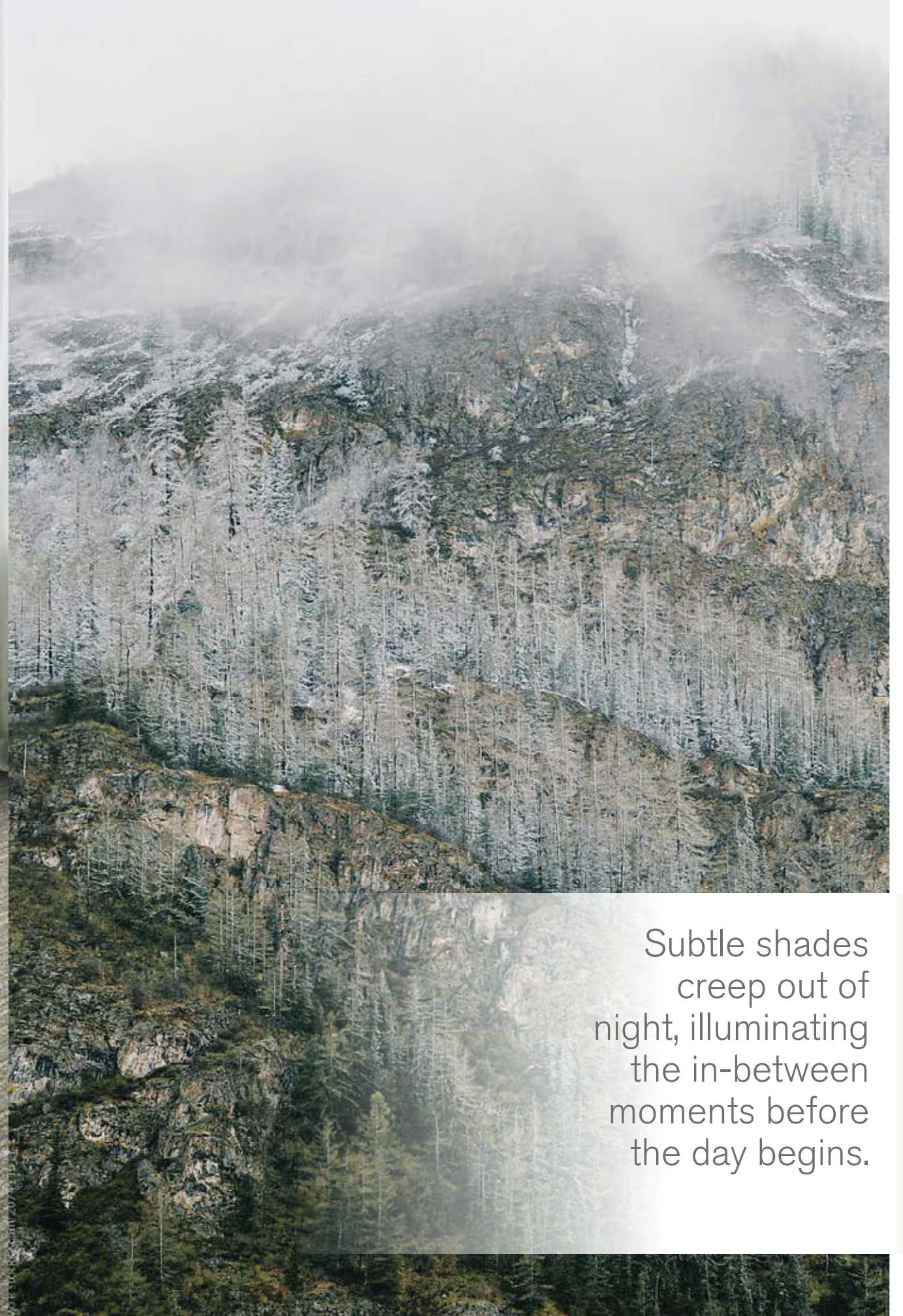
RMS 705



RMS 706

RMS 706

LVT



Subtle shades
creep out of
night, illuminating
the in-between
moments before
the day begins.

Morning Haze





RMS 703

RMS 702

LVT

RMS 701

RMS 607

RMS 703



RMS 701

RMS 706

RMS 701

LVT



RMS 508

RMS 507

LVT

LVT

RMS 704



RMS 507



RMS 706

LVT



Product

SWTS 110

PRODUCT SPECIFICATIONS

SWTS 110 Style: 127800AK00 (25cm x 1m)	Soil /Stain Protection Protekt ^{2™}
Backing System GlasBac™ Tile	Pile Thickness 0.139 in., 3.5 mm
Yarn System 100% Recycled Content Nylon	Pile Density 4,921 oz/yd ²
Yarn Manufacturer Aquafil	Total Recycled Content 76%
Color System 100% Solution Dyed	Installation Ashlar, Herringbone
Construction Tufted Sheared	CRI Green Label Plus GLP0820
Lifetime Antimicrobial Intersept®	

COLORLINE



104615 PEARL



104616 VANILLA



104617 CANVAS



104618 LUNAR



104619 DUSK



104620 CLOVE

Product

RMS 101

PRODUCT SPECIFICATIONS

RMS 101 Style: 1237602500 (50cm x 50cm) Style: 123760AK00 (25cm x 1m)*	Soil /Stain Protection Protekt ^{2™}
Backing System GlasBac™ Tile	Pile Thickness 0.145 in., 3.7 mm
Yarn System Post-Consumer Content Nylon	Pile Density 4,469 oz/yd ²
Yarn Manufacturer Universal	Total Recycled Content 67% 67-71%*
Color System 100% Solution Dyed	Installation Quarter-Turn Ashlar, Herringbone*
Construction Tufted Cut & Loop	CRI Green Label Plus GLP0820
Lifetime Antimicrobial Intersept®	

**Minimum order required and upcharge does apply. Contact your local representative for more information.*

COLORLINE



100078 LINEN



*186875 CUSTOM



*186876 CUSTOM



*186877 CUSTOM

Product

RMS 102

PRODUCT SPECIFICATIONS

RMS 102 Style: 1271902500 (50cm x 50cm)	Soil /Stain Protection Protekt ^{2™}
Backing System GlasBac™ Tile	Pile Thickness 0.139 in., 3.5 mm
Yarn System 100% Recycled Content Nylon	Pile Density 5,439 oz/yd ²
Yarn Manufacturer Aquafil	Total Recycled Content 76%
Color System 100% Solution Dyed	Installation Quarter-Turn
Construction Tufted Pattern Loop	CRI Green Label Plus GLP0820
Lifetime Antimicrobial Intersept®	

COLORLINE



9623 WALNUT



103541 WHEAT



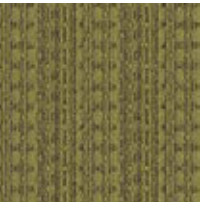
103543 QUARTZ



103545 CYPRESS



102332 MUSHROOM



102333 PALM

Product

RMS 103

PRODUCT SPECIFICATIONS

RMS 103 Style: 1272002500 (50cm x 50cm)	Soil /Stain Protection Protekt ^{2™}
Backing System GlasBac™ Tile	Pile Thickness 0.144 in., 3.7 mm
Yarn System 100% Recycled Content Nylon	Pile Density 5,500 oz/yd ²
Yarn Manufacturer Aquafil	Total Recycled Content 76%
Color System 100% Solution Dyed	Installation Quarter-Turn
Construction Tufted Pattern Loop	CRI Green Label Plus GLP0820
Lifetime Antimicrobial Intersept®	

COLORLINE



9624 WALNUT



103548 WHEAT



103550 QUARTZ



103552 CYPRESS



102334 MUSHROOM



102335 PALM

**Every product featured in the Guest Rooms Collection can be custom colored.*

Product

RMS 202

PRODUCT SPECIFICATIONS

RMS 202 Style: 1396402500 (50cm x 50cm)
Backing System GlasBac™ Tile
Yarn System 100% Recycled Content Nylon
Yarn Manufacturer Aquafil
Color System 100% Solution Dyed
Construction Tufted Loop Cut Loop
Lifetime Antimicrobial Intersept®

COLORLINE



100042 TAN

Product

RMS 303

PRODUCT SPECIFICATIONS

RMS 303 Style: 1395402500 (50cm x 50cm)
Backing System GlasBac™ Tile
Yarn System 100% Recycled Content Nylon
Yarn Manufacturer Aquafil
Color System 100% Solution Dyed
Construction Tufted Loop Cut Loop
Lifetime Antimicrobial Intersept®

COLORLINE



100100 BEIGE

Product

RMS 506

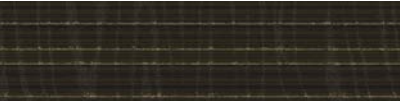
PRODUCT SPECIFICATIONS

RMS 506 Style: 139620AK00 (25cm x 1m) Style: 139620AB00 (50cm x 1m)
Backing System GlasBac™ Tile
Yarn System 100% Recycled Content Nylon
Yarn Manufacturer Aquafil
Color System 100% Solution Dyed
Construction Tufted Sheared

COLORLINE



100642 MAPLE



100643 PECAN



103584 BEECH



103585 BIRCH

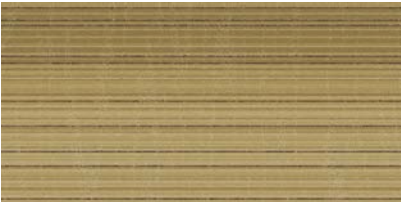


103586 WILLOW



103588 EBONY

Lifetime Antimicrobial Intersept®
Soil / Stain Protection Protekt2™
Pile Thickness 0.160 in., 4.1 mm
Pile Density 4,950 oz/yd²
Total Recycled Content 76%
Installation Ashlar, Herringbone
CRI Green Label Plus GLP0820



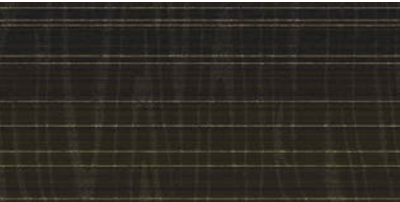
100642 MAPLE



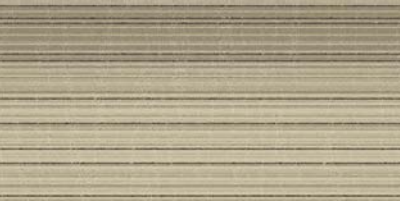
103584 BEECH



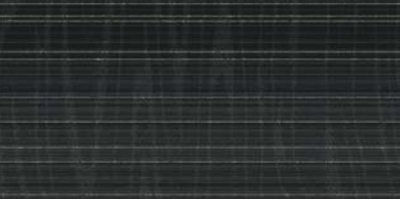
103586 WILLOW



100643 PECAN



103585 BIRCH



103588 EBONY

**Every product featured in the Guest Rooms Collection can be custom colored.*

Product

RMS 507

PRODUCT SPECIFICATIONS

RMS 507 Style: 125530AK00 (25cm x 1m)	Soil / Stain Protection Protekt ^{2™}
Backing System GlasBac™ Tile	Pile Thickness 0.115 in., 2.9 mm
Yarn System 100% Recycled Content Nylon	Pile Density 5,009 oz/yd ²
Yarn Manufacturer Aquafil	Total Recycled Content 75%
Color System 100% Solution Dyed	Installation Ashlar, Herringbone
Construction Tufted Cut & Loop	CRI Green Label Plus GLP0820
Lifetime Antimicrobial Intersept®	<i>* Please visit our website to see additional colors for this product.</i>

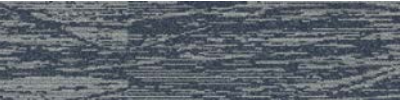
COLORLINE



104605 SPEARMINT



104606 TAFFY



105026 AGAVE



105024 SEAL



105025 CLOVE



104608 BUTTERSCOTCH



104607 LATTE

Product

RMS 508

PRODUCT SPECIFICATIONS

RMS 508 Style: 125540AK00 (25cm x 1m)	Soil / Stain Protection Protekt ^{2™}
Backing System GlasBac™ Tile	Pile Thickness 0.115 in., 2.9 mm
Yarn System 100% Recycled Content Nylon	Pile Density 5,009 oz/yd ²
Yarn Manufacturer Aquafil	Total Recycled Content 75%
Color System 100% Solution Dyed	Installation Ashlar, Herringbone
Construction Tufted Cut & Loop	CRI Green Label Plus GLP0820
Lifetime Antimicrobial Intersept®	<i>* Please visit our website to see additional colors for this product.</i>

COLORLINE



104610 SPEARMINT



104611 TAFFY



105032 AGAVE



105030 SEAL



105031 CLOVE



104613 BUTTERSCOTCH



104612 LATTE

Product

RMS 509

PRODUCT SPECIFICATIONS

RMS 509 Style: 124750AK00 (25cm x 1m)	Soil / Stain Protection Protekt ^{2™}
Backing System GlasBac™ Tile	Pile Thickness 0.122 in., 3.1 mm
Yarn System 100% Recycled Content Nylon	Pile Density 5,607 oz/yd ²
Yarn Manufacturer Aquafil	Total Recycled Content 76%
Color System 100% Solution Dyed	Installation Ashlar, Herringbone
Construction Tufted Cut & Loop	CRI Green Label Plus GLP0820
Lifetime Antimicrobial Intersept®	

COLORLINE



104595 BEECH



104596 CYPRUS



104597 POPLAR



104598 WALNUT



104599 LINDEN

Product

RMS 510

PRODUCT SPECIFICATIONS

RMS 510 Style: 125560AK00 (25cm x 1m)	Soil / Stain Protection Protekt ^{2™}
Backing System GlasBac™ Tile	Pile Thickness 0.086 in., 2.2 mm
Yarn System 100% Recycled Content Nylon	Pile Density 6,698 oz/yd ²
Yarn Manufacturer Aquafil	Total Recycled Content 75%
Color System 100% Solution Dyed	Installation Ashlar, Herringbone
Construction Tufted Cut & Loop	CRI Green Label Plus GLP0820
Lifetime Antimicrobial Intersept®	

COLORLINE



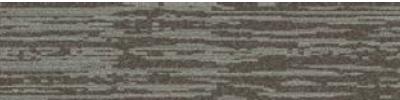
105170 GREY SHIMMER



187713 GLACIAL TERRAIN



187714 TROPICAL JUNGLE



187715 MOUNTAIN DESERT



187716 SEA SHORE

**Every product featured in the Guest Rooms Collection can be custom colored.*

Product

RMS 511

PRODUCT SPECIFICATIONS

RMS 511 Style: 125570AK00 (25cm x 1m)	Soil /Stain Protection Protekt ^{2™}
Backing System GlasBac™ Tile	Pile Thickness 0.092 in., 2.3 mm
Yarn System 100% Recycled Content Nylon	Pile Density 6,261 oz/yd ²
Yarn Manufacturer Aquafil	Total Recycled Content 75%
Color System 100% Solution Dyed	Installation Ashlar, Herringbone
Construction Tufted Cut & Loop	CRI Green Label Plus GLP0820
Lifetime Antimicrobial Intersept®	

COLORLINE



105179 GREY SHIMMER

Product

RMS 607

PRODUCT SPECIFICATIONS

RMS 607 Style: 1271702500 (50cm x 50cm)	Soil /Stain Protection Protekt ^{2™}
Backing System GlasBac™ Tile	Pile Thickness 0.124 in., 3.1 mm
Yarn System 100% Recycled Content Nylon	Pile Density 6,968 oz/yd ²
Yarn Manufacturer Aquafil	Total Recycled Content 77%
Color System 100% Solution Dyed	Installation Monolithic
Construction Tufted Pattern Loop	CRI Green Label Plus GLP0820
Lifetime Antimicrobial Intersept®	

COLORLINE



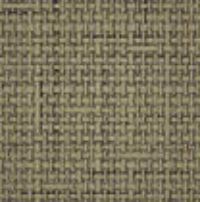
9265 CAMEL



103572 SAND



103573 IVORY



103574 KHAKI



103575 PUTTY



103576 TOBACCO

Product

RMS 701

PRODUCT SPECIFICATIONS

RMS 701 Style: 161690AK00 (25cm x 1m)	Soil /Stain Protection Protekt ^{2™}
Backing System GlasBac™ Tile	Pile Thickness 0.087 in., 2.2 mm
Yarn System 100% Recycled Content Nylon	Pile Density 8,276 oz/yd ²
Yarn Manufacturer Aquafil	Total Recycled Content 76%
Color System 100% Solution Dyed	Installation Ashlar, Herringbone
Construction Tufted Sheared	CRI Green Label Plus GLP0820
Lifetime Antimicrobial Intersept®	<i>* Please visit our website too see additional colors for this product.</i>

COLORLINE



106341 EVENING



106342 DUSK



106343 RETREAT



106344 DREAM



106345 MELLOW



106346 DEW

Product

RMS 702

PRODUCT SPECIFICATIONS

RMS 702 Style: 161760AK00 (25cm x 1m)	Soil /Stain Protection Protekt ^{2™}
Backing System GlasBac™ Tile	Pile Thickness 0.088 in., 2.2 mm
Yarn System 100% Recycled Content Nylon	Pile Density 7,773 oz/yd ²
Yarn Manufacturer Aquafil	Total Recycled Content 76%
Color System 100% Solution Dyed	Installation Ashlar, Herringbone
Construction Tufted Sheared	CRI Green Label Plus GLP0820
Lifetime Antimicrobial Intersept®	<i>* Please visit our website too see additional colors for this product.</i>

COLORLINE



106375 EVENING



106376 DUSK



106377 RETREAT



106378 DREAM



106379 MELLOW



106380 DEW

**Every product featured in the Guest Rooms Collection can be custom colored.*

Product

RMS 703

PRODUCT SPECIFICATIONS

RMS 703 Style: 161770AK00 (25cm x 1m)	Soil /Stain Protection Protekt ^{2™}
Backing System GlasBac™ Tile	Pile Thickness 0.102 in., 2.6 mm
Yarn System 100% Recycled Content Nylon	Pile Density 6,353 oz/yd ²
Yarn Manufacturer Aquafil	Total Recycled Content 75%
Color System 100% Solution Dyed	Installation Brick
Construction Tufted Sheared	CRI Green Label Plus GLP0820
Lifetime Antimicrobial Intersept®	<i>* Please visit our website too see additional colors for this product.</i>

COLORLINE



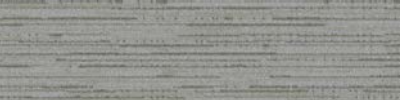
106387 EVENING



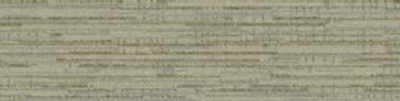
106388 DUSK



106389 RETREAT



106390 DREAM



106391 MELLOW



106392 DEW

Product

RMS 704

PRODUCT SPECIFICATIONS

RMS 704 Style: 125630AK00 (25cm x 1m)	Soil /Stain Protection Protekt ^{2™}
Backing System GlasBac™ Tile	Pile Thickness 0.083 in., 2.1 mm
Yarn System 100% Recycled Content Nylon	Pile Density 7,373 oz/yd ²
Yarn Manufacturer Aquafil	Total Recycled Content 76%
Color System 100% Solution Dyed	Installation Ashlar
Construction Tufted Cut & Loop	CRI Green Label Plus GLP0820
Lifetime Antimicrobial Intersept®	

COLORLINE



106418 HOT COCOA



106419 SIESTA



106420 DAWN



106421 PEACE



106422 SMOKEY



106423 TWILIGHT

Product

RMS 705

PRODUCT SPECIFICATIONS

RMS 705 Style: 125640AK00 (25cm x 1m)	Soil /Stain Protection Protekt ^{2™}
Backing System GlasBac™ Tile	Pile Thickness 0.078 in., 2.0 mm
Yarn System 100% Recycled Content Nylon	Pile Density 7,846 oz/yd ²
Yarn Manufacturer Aquafil	Total Recycled Content 76%
Color System 100% Solution Dyed	Installation Ashlar, Herringbone
Construction Tufted Cut & Loop	CRI Green Label Plus GLP0820
Lifetime Antimicrobial Intersept®	

COLORLINE



106430 HOT COCOA



106431 SIESTA



106432 DAWN



106433 PEACE



106434 SMOKEY



106435 TWILIGHT

Product

RMS 706

PRODUCT SPECIFICATIONS

RMS 706 Style: 125620AK00 (25cm x 1m)	Soil /Stain Protection Protekt ^{2™}
Backing System GlasBac™ Tile	Pile Thickness 0.083 in., 2.1 mm
Yarn System 100% Recycled Content Nylon	Pile Density 7,373 oz/yd ²
Yarn Manufacturer Aquafil	Total Recycled Content 76%
Color System 100% Solution Dyed	Installation Ashlar, Herringbone
Construction Tufted Cut & Loop	CRI Green Label Plus GLP0820
Lifetime Antimicrobial Intersept®	

COLORLINE



106406 HOT COCOA



106407 SIESTA



106408 DAWN



106409 PEACE



106410 SMOKEY



106411 TWILIGHT

**Every product featured in the Guest Rooms Collection can be custom colored.*

FEATURED PRODUCTS

PRODUCT	COLOR	PAGE
SWTS 110	104616 VANILLA	9
	104617 CANVAS	9
	FULL COLORLINE	44
RMS 101	186877 (CUSTOM)	37
	100078 LINEN	44
RMS 102	103545 CYPRESS	13
	FULL COLORLINE	45
RMS 103	102334 MUSHROOM	13
	103550 QUARTZ	18
	FULL COLORLINE	45
RMS 202	100042 TAN	8, 46
RMS 303	100100 BEIGE	8, 46
RMS 506	103585 BIRCH	18
	103588 EBONY	32
	FULL COLORLINE	47
RMS 507	105025 CLOVE	19
	104605 SPEARMINT	41, 43
	FULL COLORLINE	48
RMS 508	104612 LATTE	10
	104610 SPEARMINT	41
	FULL COLORLINE	48
RMS 509	104595 BEECH	3, 23
	104597 POPLAR	12
	FULL COLORLINE	49
RMS 510	187714 TROPICAL JUNGLE	7
	187715 MOUNTAIN DESERT	22
	187713 GLACIAL TERRAIN	30, 31
	FULL COLORLINE	49
RMS 511	105179 GREY SHIMMER	24, 29, 50
RMS 607	103573 IVORY	4, 11
	103574 KHAKI	13
	103575 PUTTY	39
	FULL COLORLINE	50

ADDITIONAL PRODUCTS

PRODUCT	COLOR	PAGE
NATURAL WOODGRAINS	A00204 BEECH	COVER, 7
	A00208 SAND DUNE	8, 10
	A00202 MADAGASCAR	27
	A00205 STORM	38, 40, 41
TEXTURED WOODGRAINS	A00401 DISTRESSED WALNUT	3
	A00406 ANTIQUE LIGHT OAK	11
	A00409 ASH WALNUT	13
	A00416 ANTIQUE DARK OAK	17, 18, 19, 20, 23
	A00429 GREYWOOD	42, 43
STUDIO SET	A00702 PEWTER	32, 33
ON LINE	103783 MUSHROOM	10
	105259 FOG	22
	105263 TITANIUM	28, 31

PRODUCT	COLOR	PAGE
RMS 701	106342 DUSK	17
	106341 EVENING	29
	106343 RETREAT	38, 40
	106345 MELLOW	40
	FULL COLORLINE	51
RMS 702	106376 DUSK	18, 20, 21, 23
	106380 DEW	23
	106378 DREAM	31
	106379 MELLOW	38
	FULL COLORLINE	51
RMS 703	106388 DUSK	21, 22, 23
	106387 EVENING	28
	106390 DREAM	28, 29
	106389 RETREAT	34, 38, 39
	FULL COLORLINE	52
RMS 704	106420 DAWN	COVER
	106418 HOT COCOA	20
	106423 TWILIGHT	30
	106419 SIESTA	42
	FULL COLORLINE	52
RMS 705	106430 HOT COCOA	14, 20, 21
	106434 SMOKEY	32
	106435 TWILIGHT	32
	FULL COLORLINE	53
RMS 706	106410 SMOKEY	27, 33
	106411 TWILIGHT	33
	106407 SIESTA	40, 43
	FULL COLORLINE	53



Carbon Neutral Floors
Our Carbon Neutral Floors program is annually verified by a third party.

Sustainable Assessment for Carpet
The only carpet sustainability standard in North America that evaluates the environmental impact of carpet for its entire lifecycle.

CRI Green Label Plus
An independent testing program that identifies carpet and adhesives with very low emissions of VOCs to help improve indoor air quality.

Environmental Product Declaration (EPD)
A statement of product ingredients and environmental impacts over the entire lifecycle of a product. A comprehensive life cycle assessment (LCA) is performed to ISO standards to develop an EPD, after which both the EPD and the LCA must be third party verified.

WHY MODULAR FLOORING?



Flexibility

Keep Your Floor Beautiful. Modular flooring allows you to play with pattern and design without having to special order sizes. And the same flexibility that lets you create your floor helps you keep it looking good because in-house staff can easily replace individual tiles that become damaged or heavily soiled—no down time or outside contractors required.



Intersept®

Mold Protection. Our proprietary preservative, Intersept, protects our modular carpet against mold growth and odor-causing bacteria — guaranteed. Intersept treated carpet, with proper maintenance, shows no mold or bacterial growth when tested per the ASTM E2471 Standard Test Method. Intersept is EPA approved for safe use in carpet, water insoluble and contains no halogens, heavy metals, phenols or formaldehyde.



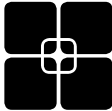
Sustainable Choice

Environmental Responsibility. More than 95% of Interface products manufactured in the Americas carry the GreenCircle Certified Environmental Facts label, which has verified that standard Interface products are manufactured using 99% renewable energy and offer a minimum of 66% and 80% total recycled content when backed with GlasBac and GlasBacRE backing respectively.



CushionBac Renew™

Get Comfortable. Enjoy greater comfort underfoot and improved acoustics with our high performance CushionBac Renew backing. The 21 oz. felt cushion provides less resistance to footfalls and increased sound absorption to create a more comfortable environment overall. As one of our low carbon options, CushionBac Renew also offers a total product recycled content of up to 76% (up to 25% post-consumer content), and can be recycled into our GlasBac™RE backing.



TacTiles™

No Glue Installation. Our revolutionary TacTiles installation system eliminates the need for glue, adhering carpet tiles securely together to form a floor that “floats” for greater flexibility, easier replacement and long-term performance. The result? Less mess, less waste and virtually no VOCs, not to mention an environmental footprint that is over 90% lower than that of traditional glue adhesives.



Less Waste

Save Money. Interface Hospitality's modular flooring averages just 3.9% installation waste compared to as much as 18% or more with patterned roll carpet. Use our non directional styles with an average of 1.5% waste and save even more. That means more of your flooring investment stays on the floor—not in a dumpster.



Carbon Neutral Floors™

Create a Climate Fit for Life. All of the flooring products sold by Interface – carpet tile, LVT, and rubber – are carbon neutral and third party verified. We’ve taken a holistic approach to achieve carbon neutrality, first through reducing the carbon footprint of our products and then using carbon offsets for the remainder, including the emissions from raw materials, our manufacturing processes and product use to end of life.



ReEntry™

Closing the Loop. We want our carpet tile and LVT back. Through our ReEntry program we reclaim and recycle our used carpet tile and LVT and turn it into new flooring. We'll even take many of our competitors' products. The result? Products with up to 89% total recycled content, including as much as 27% post-consumer content.