



Printed on 50% post consumer waste (PCW)
fiber manufactured using wind power.

We have tried our very best to accurately
represent product colors. However, due to
the nature of printed materials, color of actual
products may vary slightly. Please request a
sample to see actual product color.

www.interface.com

United States Headquarters
1280 West Peachtree Street NW
Atlanta, GA 30309
1.800.634.6032

Canadian Headquarters
233 Lahr Drive
Belleville, ON K8N 5S2
1.800.267.2149 ext.52128

Latin American Headquarters
Montes Urales # 415 Piso 6
Col. Lomas de Chapultepec
Miguel Hidalgo, CDMX, C.P. 11000
Mexico
+ 52 55 2791 6812

CIM # IFS00882 01/2021



Climate change is undeniable. And
reversible. Our mission is to prove it.
**Join the #ClimateTakeBack and
help create a climate fit for life.**

 *QuickShip* / *Neutrals*
Two

Interface®

The flooring you need, when you need it.

Running up against a deadline? Rely on Interface QuickShip to deliver — *fast*.

QuickShip pulls together hundreds of our most in-demand carpet and LVT options as an affordable solution for a variety of spaces. This book, Neutrals Two, contains a selection of go-to carpet styles and color options that are part of the program.

The best part? It all ships within 10 business days.

Carpet Tile
Field Styles | Up to 2,000 SY
Accents & Walk Off | Up to 200 SY

LVT
Field Styles | Up to 10,000 SF

Don't sacrifice style for quick turn projects. With QuickShip carpet and LVT, you have a practical flooring option that checks the boxes on speed, design, durability, and maintenance.

To explore all available QuickShip options, visit interface.com/quickship.

TABLE OF CONTENTS

Color Stories 3-34

- QUICK SILVER **p.3**
- SWIFT GREY **p.11**
- RAPID CHARCOAL **p.19**
- JET BLACK **p.27**

Specifications 35-48

- ICE BREAKER™ **p.37**
- SHIVER ME TIMBERS™ **p.39**
- SL910 **p.41**
- SOURCE MATERIAL™ **p.43**
- STITCHERY™ **p.45**
- WW860 **p.47**

Fast Friends 49-66

- DRIFTWOOD™ **p.51**
- SL920 **p.55**
- SL930 **p.59**
- BITRATE™ **p.63**

Index 67-68

Why Interface 69-70

QUICK SILVER





PRODUCT WW860 **COLOR** 105351 LINEN TWEED **INSTALLED** ASHLAR



PRODUCT SHIVER ME TIMBERS **COLOR** 103921 BEECH **INSTALLED** ASHLAR



SWIFT GREY



CARPET PRODUCT WW860 **COLOR** 105356 NATURAL TWEED
LVT PRODUCT TEXTURED STONES™ **COLOR** A00302 COOL POLISHED CEMENT **INSTALLED** ASHLAR



PRODUCT ICE BREAKER **COLOR** 105775 QUARRY **INSTALLED** MONOLITHIC



PRODUCT STITCHERY **COLOR** 105931 NICKEL STITCHERY
PRODUCT WW860 **COLOR** 105352 FLANNEL TWEED **INSTALLED** ASHLAR



PRODUCT ICE BREAKER **COLOR** 105770 CONCRETE **INSTALLED** MONOLITHIC



PRODUCT STITCHERY COLOR 105931 NICKEL STITCHERY INSTALLED HERRINGBONE

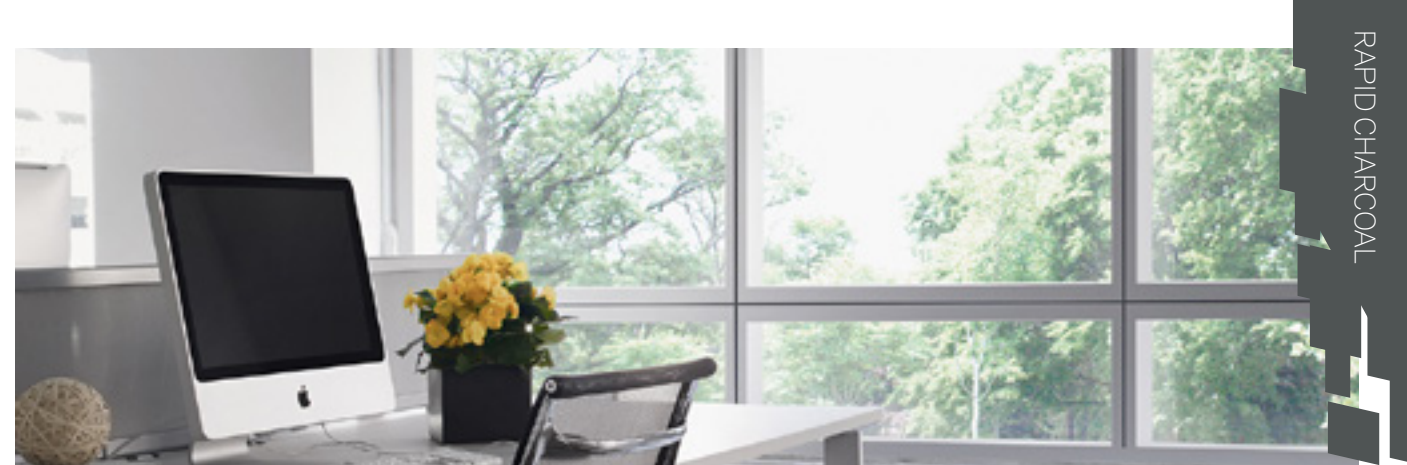


PRODUCT SOURCE MATERIAL COLOR 106309 NICKEL
PRODUCT WW860 COLOR 105352 FLANNEL TWEED INSTALLED ASHLAR

RAPID CHARCOAL









PRODUCT SHIVER ME TIMBERS **COLOR** 103936 HICKORY
PRODUCT SL910 **COLOR** 104501 GRAPHITE **INSTALLED** ASHLAR

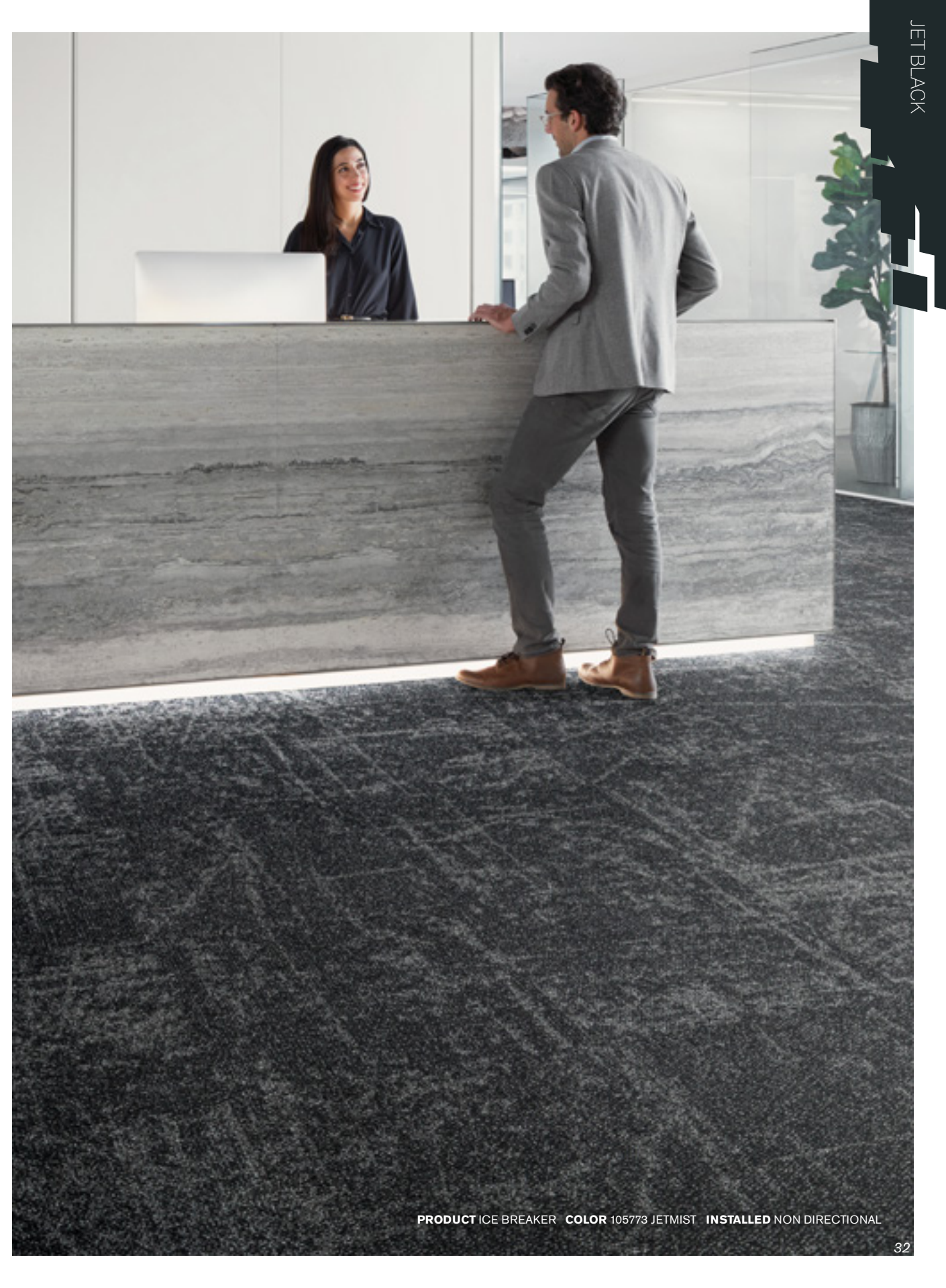


PRODUCT SOURCE MATERIAL **COLOR** 106310 CHARCOAL **INSTALLED** ASHLAR

JET BLACK







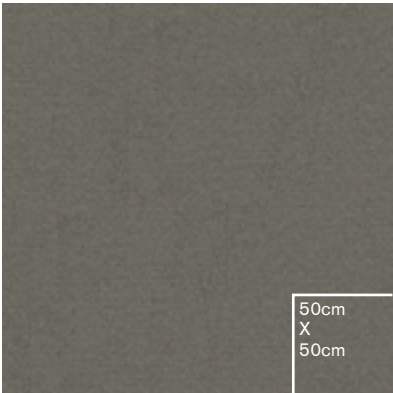


PRODUCT SL910 **COLOR** 104500 CHARCOAL
PRODUCT SHIVER ME TIMBERS **COLOR** 103922 SYCAMORE **INSTALLED** ASHLAR



PRODUCT SHIVER ME TIMBERS **COLOR** 103922 SYCAMORE **INSTALLED** ASHLAR

PRODUCT SPECIFICATIONS



105770 CONCRETE



105771 GRANITE



105772 BLUESTONE



105773 JETMIST



105775 QUARRY



105776 AGATE



105778 MAGMA

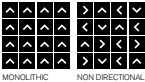


105779 GRAYFOX

Specifications



Modular, 50cm x 50cm	14730
Backing System	Standard Backing
Yarn Manufacturer	Universal
Yarn System	Post-Consumer Content Nylon
Color System	100% Solution Dyed
Construction	Tufted Textured Loop
Preservation Protection	Intersept™
Soil/Stain Protection	Protekt™
Pile Thickness	0.071 in., 1.8 mm
Pile Density	8,620
Total Recycled Content	Up to 79%
Indoor Air Quality	CRI Green Label Plus #GLP0820



MONOLITHIC NON DIRECTIONAL



PRODUCT ICE BREAKER COLOR 105775 QUARRY INSTALLED NON DIRECTIONAL



PRODUCT SHIVER ME TIMBERS COLOR 103923 CYPRUS INSTALLED ASHLAR

Shiver Me Timbers™ Colorline The colorline grids shown below are all in a 2m x 2m ashlar display.



103921 BEECH



103922 SYCAMORE



103923 CYPRUS



103936 HICKORY

Specifications



Modular, 25cm x 1m	12741
Backing System	Standard Backing
Yarn Manufacturer	Aquafil
Yarn System	100% Recycled Content Nylon
Color System	100% Solution Dyed
Construction	Tufted Level Loop
Preservation Protection	Intersept™
Soil/Stain Protection	Protekt™
Pile Thickness	0.71 in., 1.8 mm
Pile Density	9,127
Total Recycled Content	Up to 83%
Indoor Air Quality	CRI Green Label Plus #GLP0820



Plays well
with these other
QuickShip styles:

- Driftwood
- Walk the Plank™

SL910 Colorline The colorline grids shown below are all in a 2m x 2m ashlar display.



104500 CHARCOAL



104501 GRAPHITE

Specifications

Modular, 25cm x 1m	13877
Backing System	Standard Backing
Yarn Manufacturer	Aquafil
Yarn System	100% Recycled Content Nylon
Color System	100% Solution Dyed
Construction	Tufted Textured Loop
Preservation Protection	Intersept™
Soil/Stain Protection	Protekt™
Pile Thickness	0.112 in., 3.7 mm
Pile Density	6,429
Total Recycled Content	Up to 83%
Indoor Air Quality	CRI Green Label Plus #GLP0820



Plays well
with these other
QuickShip styles:

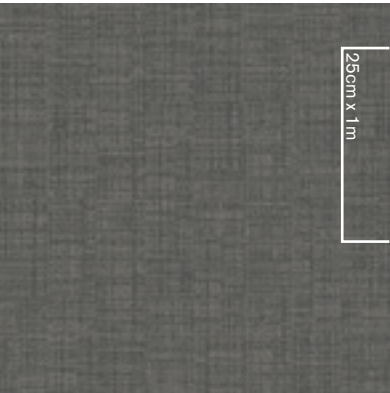
- SL920
- SL930





CARPET PRODUCT SOURCE MATERIAL **COLOR** 106310 CHARCOAL
LVT PRODUCT STUDIO SET™ **COLOR** A00713 SLATE **INSTALLED** ASHLAR

Source Material™ Colorline The colorline grids shown below are all in a 2m x 2m ashlar display.



106309 NICKEL



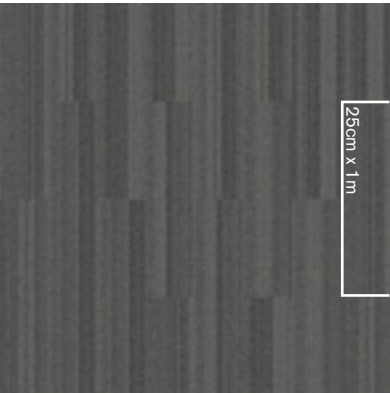
106310 CHARCOAL

Specifications

Modular, 25cm x 1m	16329
Backing System	Standard Backing
Yarn Manufacturer	Aquafil
Yarn System	100% Recycled Content Nylon
Color System	100% Solution Dyed
Construction	Tufted Textured Loop
Preservation Protection	Intersept™
Soil/Stain Protection	Protekt™
Pile Thickness	0.079 in., 2 mm
Pile Density	7,747
Total Recycled Content	Up to 83%
Indoor Air Quality	CRI Green Label Plus #GLP0820

**Plays well
with this other
QuickShip style:**
- Bitrate





105931 NICKEL STITCHERY



105933 GREY STITCHERY



105937 SLATE STITCHERY

Specifications

Modular, 25cm x 1m	13927
Backing System	Standard Backing
Yarn Manufacturer	Aquafil
Yarn System	100% Recycled Content Nylon
Color System	100% Solution Dyed
Construction	Tufted Pattern Loop
Preservation Protection	Intersept™
Soil/Stain Protection	Protekt2™
Pile Thickness	0.08 in., 2 mm
Pile Density	7,650
Total Recycled Content	Up to 83%
Indoor Air Quality	CRI Green Label Plus #GLP0820



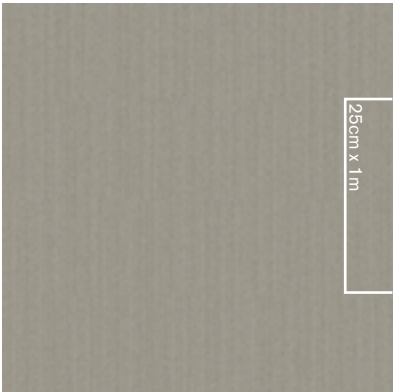
Plays well
with this other
QuickShip style:
- *Static Lines™*





PRODUCT WW860 COLOR 105356 NATURAL TWEED INSTALLED ASHLAR

WW860 Colorline The colorline grids shown below are all in a 2m x 2m non directional display.



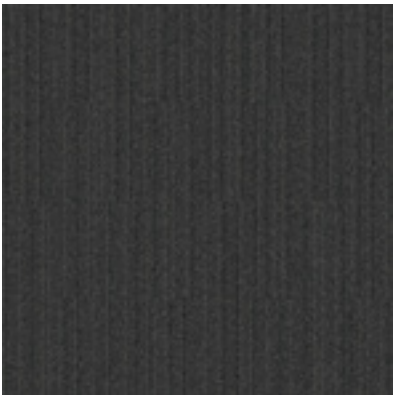
105351 LINEN TWEED



105352 FLANNEL TWEED



105353 CHARCOAL TWEED



105354 BLACK TWEED



105356 NATURAL TWEED

Specifications

Modular, 25cm x 1m	12819
Backing System	Standard Backing
Yarn Manufacturer	Aquafil
Yarn System	100% Recycled Content Nylon
Color System	100% Solution Dyed
Construction	Tufted Pattern Loop
Preservation Protection	Intersept™
Soil/Stain Protection	Protekt™
Pile Thickness	0.065 in., 1.7 mm
Pile Density	9,415
Total Recycled Content	Up to 83%
Indoor Air Quality	CRI Green Label Plus #GLP0820



Plays well with these other QuickShip styles:

- WW865
- WW870
- WW880
- WW895
- *Stitch in Time™*
- *French Seams™*



FAST FRIENDS

Looking for the right companion for your go-to neutrals? Add a pop of color to the floor with more QuickShip coordinates that will take any space to the next level.



104852 LEYLAND



104856 LINDEN



104858 TEAK



104859 SWEETGUM

Specifications



Modular, 25cm x 1m	13894
Backing System	Standard Backing
Yarn Manufacturer	Aquafil
Yarn System	100% Recycled Content Nylon
Color System	100% Solution Dyed
Construction	Tufted Textured Loop
Preservation Protection	Intersept™
Soil/Stain Protection	Protekt™
Pile Thickness	0.095 in., 2.4 mm
Pile Density	6,821
Total Recycled Content	Up to 83%
Indoor Air Quality	CRI Green Label Plus #GLP0820



**Plays well
with these other
QuickShip styles:**

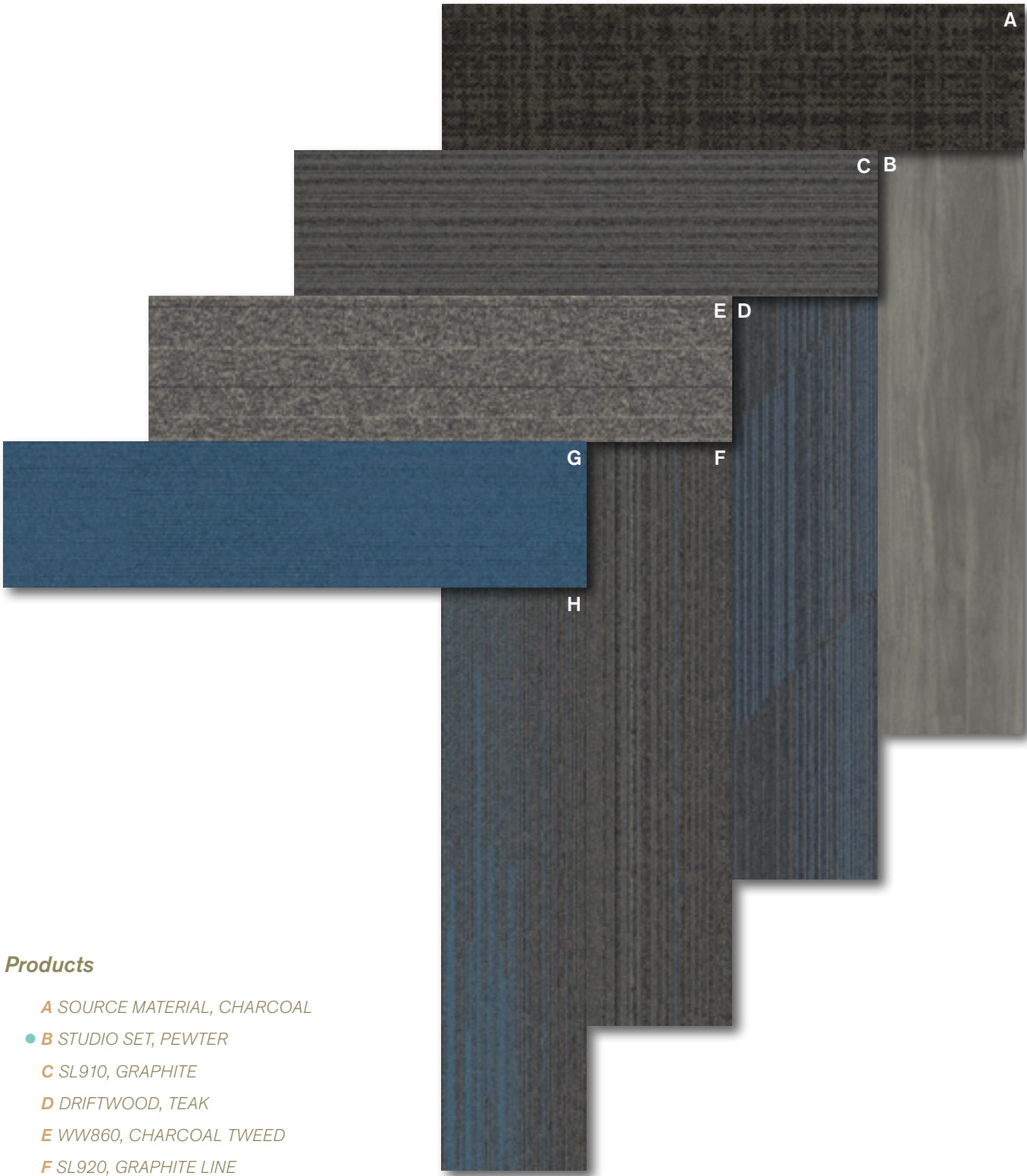
- *Shiver Me Timbers*
- *Walk the Plank*





PRODUCT DRIFTWOOD COLOR 104858 TEAK INSTALLED ASHLAR
PRODUCT SL910 COLOR 104501 GRAPHITE INSTALLED ASHLAR
PRODUCT ON LINE COLOR 103797 AZURE INSTALLED PATTERN BY TILE

Fast Friends



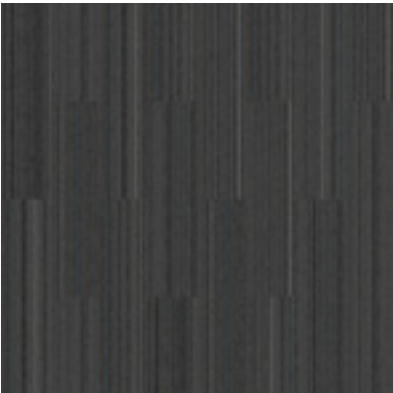
Products

- A SOURCE MATERIAL, CHARCOAL
- B STUDIO SET, PEWTER
- C SL910, GRAPHITE
- D DRIFTWOOD, TEAK
- E WW860, CHARCOAL TWEED
- F SL920, GRAPHITE LINE
- G ON LINE, AZURE
- H SL930, GRAPHITE FADE

SL920 Colorline The colorline grids shown below are all in a 2m x 2m ashlar display.



104512 CHARCOAL LINE



104513 GRAPHITE LINE

Specifications

Modular, 25cm x 1m	13878
Backing System	Standard Backing
Yarn Manufacturer	Aquafil
Yarn System	100% Recycled Content Nylon
Color System	100% Solution Dyed
Construction	Tufted Textured Loop
Preservation Protection	Intersept™
Soil/Stain Protection	Protekt™
Pile Thickness	0.112 in., 2.8 mm
Pile Density	6,429
Total Recycled Content	Up to 83%
Indoor Air Quality	CRI Green Label Plus #GLP0820



Plays well
with these other
QuickShip styles:

- SL910
- SL930

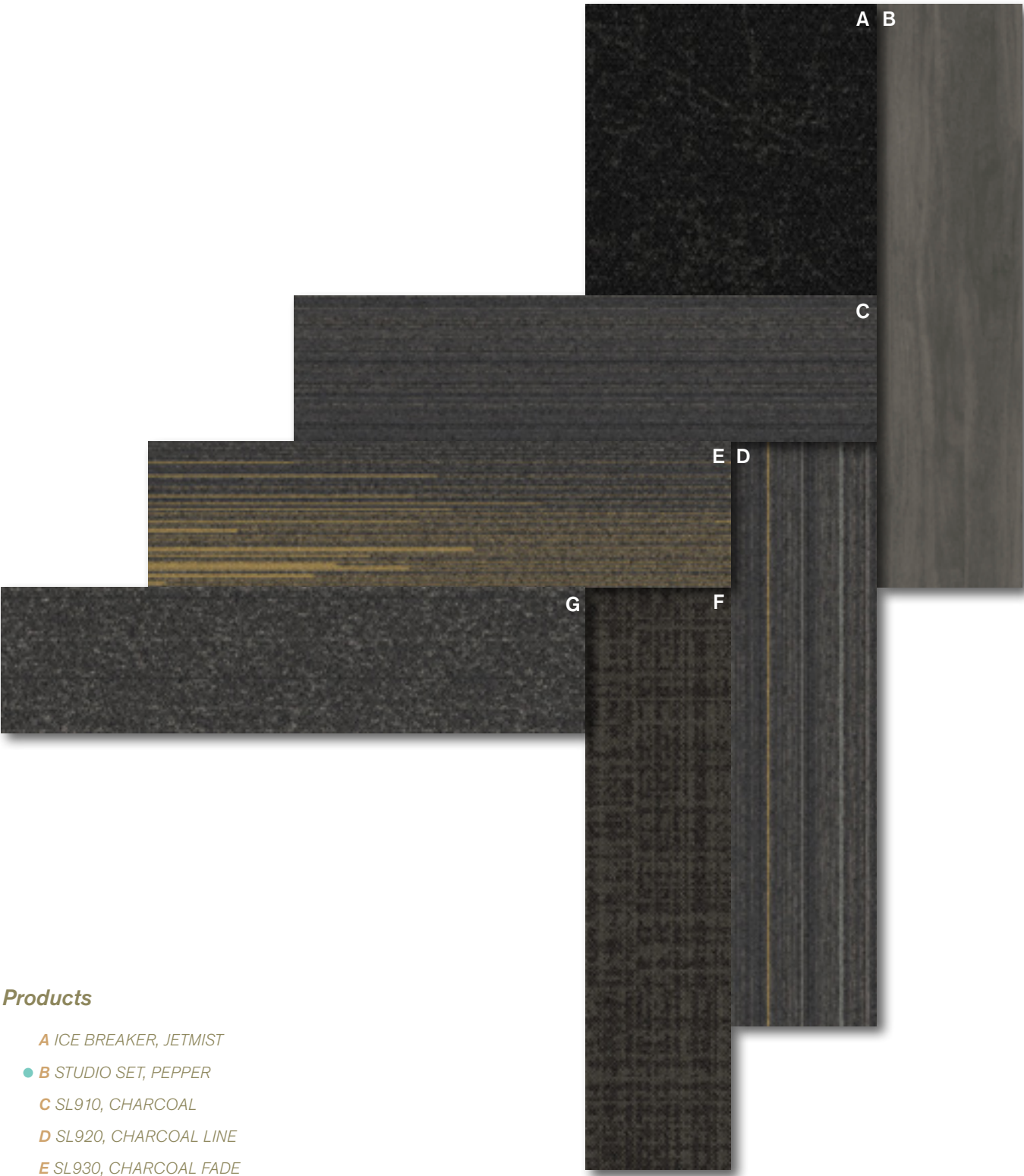


PRODUCT SL910 COLOR 104501 GRAPHITE
PRODUCT SL920 COLOR 104513 GRAPHITE LINE INSTALLED ASHLAR



PRODUCT SL910 COLOR 104500 CHARCOAL
PRODUCT SL920 COLOR 104512 CHARCOAL LINE
PRODUCT SL930 COLOR 104524 CHARCOAL FADE INSTALLED ASHLAR

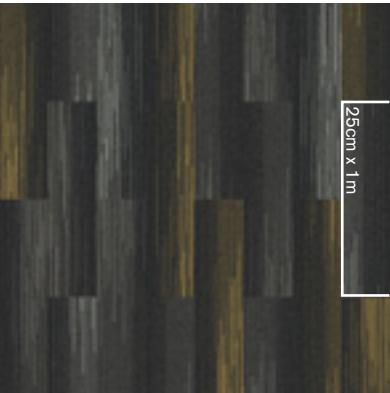
Fast Friends



Products

- A ICE BREAKER, JETMIST
- B STUDIO SET, PEPPER
- C SL910, CHARCOAL
- D SL920, CHARCOAL LINE
- E SL930, CHARCOAL FADE
- F SOURCE MATERIAL, CHARCOAL
- G WW860, BLACK TWEED

SL930 Colorline The colorline grids shown below are all in a 2m x 2m ashlar display.



104524 CHARCOAL FADE



104525 GRAPHITE FADE

Specifications



Modular, 25cm x 1m	13879
Backing System	Standard Backing
Yarn Manufacturer	Aquafil
Yarn System	100% Recycled Content Nylon
Color System	100% Solution Dyed
Construction	Tufted Textured Loop
Preservation Protection	Intersept™
Soil/Stain Protection	Protekt™
Pile Thickness	0.117 in., 3 mm
Pile Density	6,462
Total Recycled Content	Up to 84%
Indoor Air Quality	CRI Green Label Plus #GLP0820



Plays well
with these other
QuickShip styles:

- SL910
- SL920



PRODUCT SL930 COLOR 104525 GRAPHITE FADE
PRODUCT SL920 COLOR 104513 GRAPHITE LINE INSTALLED ASHLAR



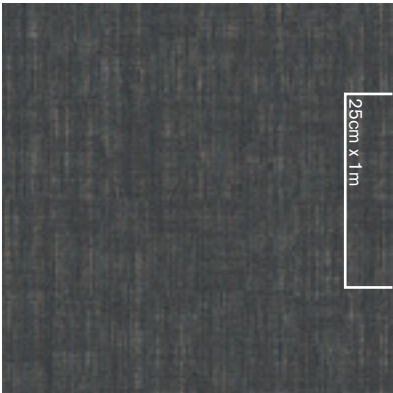
CARPET PRODUCT WW860 **COLOR** 105356 NATURAL TWEED **INSTALLED** ASHLAR
LVT PRODUCT TEXTURED STONES™ **COLOR** A00302 COOL POLISHED CEMENT **INSTALLED** MONOLITHIC

Fast Friends

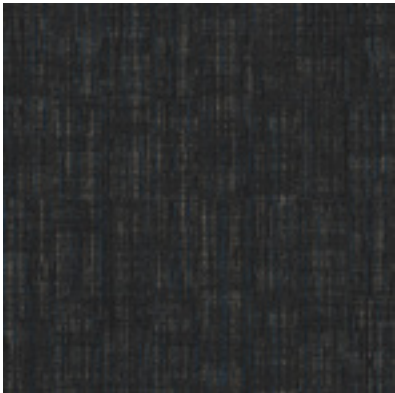


Products

- A** ICE BREAKER, MAGMA
- B** NATURAL WOODGRAINS, WASHED WHEAT
- C** WW860, NATURAL TWEED
- D** ICE BREAKER, GRAYFOX
- E** STITCHERY, GREY STITCHERY
- F** TEXTURED STONES, COOL POLISHED CEMENT
- G** WW860, LINEN TWEED
- H** SHIVER ME TIMBERS, BEECH



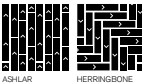
106303 DARK AQUA



106305 DARK BLUE

Specifications

Modular, 25cm x 1m	16168
Backing System	Standard Backing
Yarn Manufacturer	Aquafil
Yarn System	100% Recycled Content Nylon
Color System	100% Solution Dyed
Construction	Tufted Pattern Loop
Preservation Protection	Intersept™
Soil/Stain Protection	Protekt™
Pile Thickness	0.086 in., 2.2 mm
Pile Density	7,535
Total Recycled Content	Up to 83%
Indoor Air Quality	CRI Green Label Plus #GLP0820



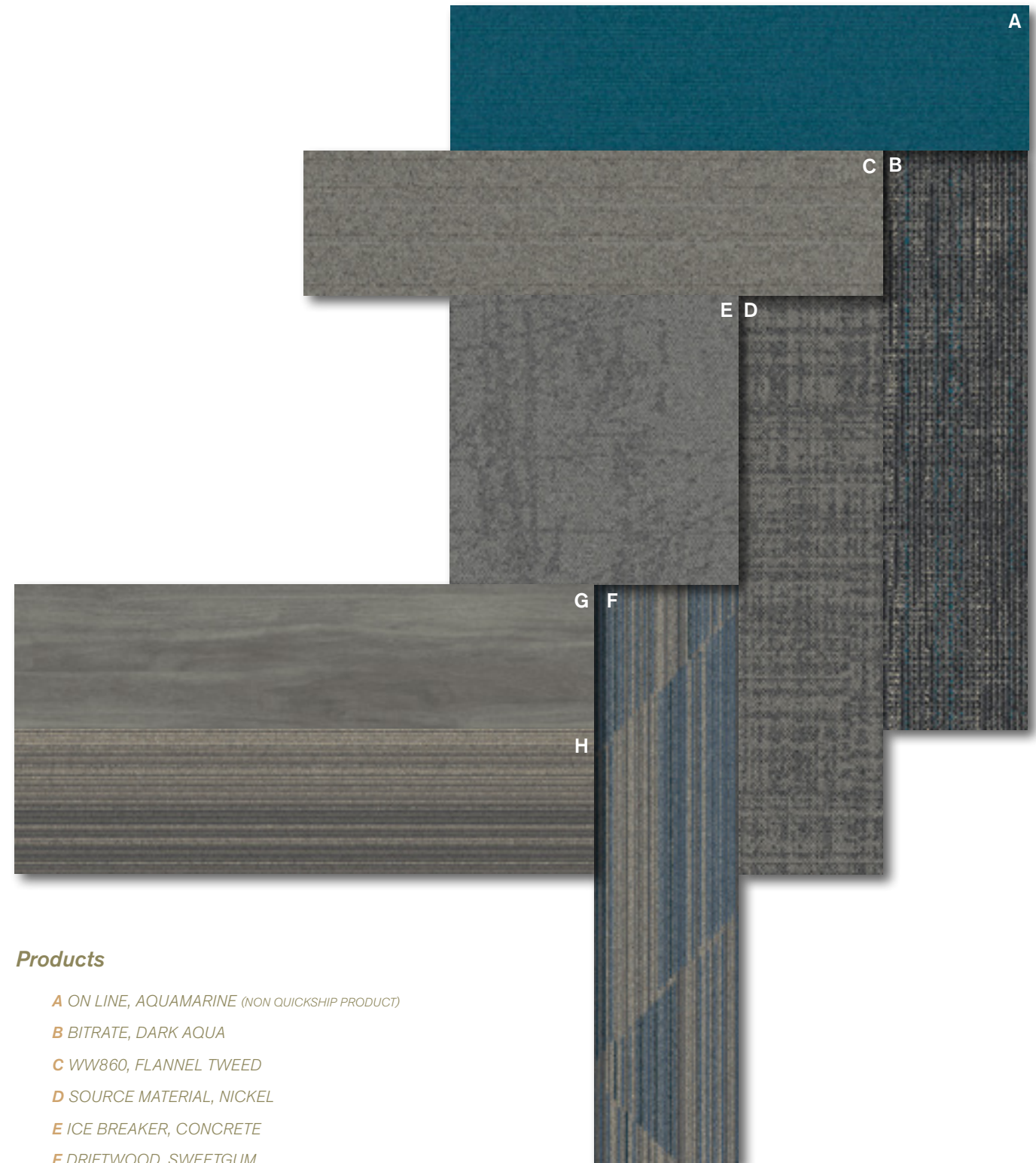
**Plays well
with this other
QuickShip style:**
- Source Material





PRODUCT BITRATE **COLOR** 106303 DARK AQUA
PRODUCT SOURCE MATERIAL **COLOR** 106309 NICKEL
PRODUCT ON LINE **COLOR** 105266 AQUAMARINE **INSTALLED** ASHLAR

Fast Friends



Products

A ON LINE, AQUAMARINE (NON QUICKSHIP PRODUCT)

B BITRATE, DARK AQUA

C WW860, FLANNEL TWEED

D SOURCE MATERIAL, NICKEL

E ICE BREAKER, CONCRETE

F DRIFTWOOD, SWEETGUM

● **G** STUDIO SET, PEWTER

H SHIVER ME TIMBERS, CYPRUS

INDEX

In search of old favorites?
Classic QuickShip styles
and the full QuickShip
catalog can be found at
interface.com/quickship.

Neutrals Two Products

Ice Breaker
Ice Breaker
Ice Breaker
Ice Breaker
Ice Breaker
Ice Breaker
Ice Breaker
Ice Breaker

Shiver Me Timbers
Shiver Me Timbers
Shiver Me Timbers
Shiver Me Timbers

SL910
SL910

Source Material
Source Material

Stitchery
Stitchery
Stitchery

WW860
WW860
WW860
WW860
WW860

Colors

105770 Concrete
105771 Granite
105772 Bluestone
105773 Jetmist
105775 Quarry
105776 Agate
105778 Magma
105779 Grayfox

103921 Beech
103922 Sycamore
103923 Cyprus
103936 Hickory

104500 Charcoal
104501 Graphite

106309 Nickel
106310 Charcoal

105931 Nickel Stitchery
105933 Grey Stitchery
105937 Slate Stitchery

105351 Linen Tweed
105352 Flannel Tweed
105353 Charcoal Tweed
105354 Black Tweed
105356 Natural Tweed

Pages

16, 23, 37, 66
23, 37
30, 37
32, 37, 58
14, 37, 38
21, 37
5, 37, 62
9, 37, 62

6, 8, 40, 62
33, 34, 40
10, 39, 40, 66
25, 40

29, 31, 33, 41, 57, 58
24, 25, 41, 42, 53, 54

18, 44, 65, 66
22, 26, 29, 43, 44, 54, 58

15, 17, 45, 46
5, 45, 62
31, 45

6, 7, 48, 62
18, 48, 66
21, 22, 48, 58
30, 48, 58
8, 13, 47, 48, 61, 62

Service Level Promise

ships within 10 business days

Up to 2,000 SY
Up to 2,000 SY
Up to 2,000 SY
Up to 2,000 SY
Up to 2,000 SY
Up to 2,000 SY
Up to 2,000 SY
Up to 2,000 SY

Up to 2,000 SY
Up to 2,000 SY
Up to 2,000 SY
Up to 2,000 SY

Up to 2,000 SY
Up to 2,000 SY

Up to 2,000 SY
Up to 2,000 SY

Up to 2,000 SY
Up to 2,000 SY
Up to 2,000 SY

Up to 2,000 SY
Up to 2,000 SY
Up to 2,000 SY
Up to 2,000 SY
Up to 2,000 SY

Fast Friends

Bitrate
Bitrate

Driftwood
Driftwood
Driftwood
Driftwood

● Natural Woodgrains

On Line
On Line (non QuickShip Product)

SL920
SL920

SL930
SL930

● Studio Set
● Studio Set
● Studio Set

● Textured Stones

Colors

106303 Dark Aqua
106305 Dark Blue

104852 Leyland
104856 Linden
104858 Teak
104859 Sweetgum

A00207 Washed Wheat

103797 Azure
105266 Aquamarine

104512 Charcoal Line
104513 Graphite Line

104524 Charcoal Fade
104525 Graphite Fade

A00702 Pewter
A00703 Pepper
A00713 Slate

A00302 Cool Polished Cement

Pages

63, 65, 66
63, 64

51
51
51, 53, 54
51, 52, 66

62

54
66

55, 57, 58
54, 55, 56, 60

57, 58, 59
54, 55, 56, 59, 60

54, 66
58
43

62

Service Level Promise

ships within 10 business days

Up to 2,000 SY
Up to 2,000 SY

Up to 2,000 SY
Up to 2,000 SY
Up to 2,000 SY
Up to 2,000 SY

Up to 10,000 SF

Up to 200 SY
N/A

Up to 2,000 SY
Up to 2,000 SY

Up to 200 SY
Up to 2,000 SY

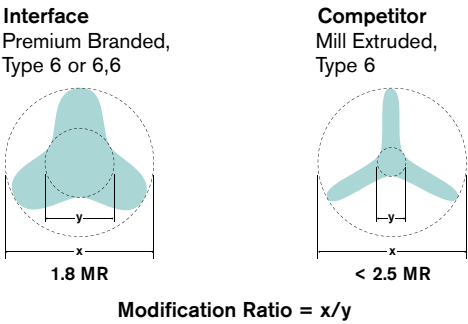
Up to 10,000 SF
Up to 10,000 SF
Up to 10,000 SF

Up to 10,000 SF

Why Interface? | Performance

Beauty that Lasts

Fiber We start with the best—commercial-grade, solution dyed fibers with a low modification (MR) ratio. A lower MR means better performance. The result? High performance fibers that don't fade or bleach out.



Passing the Test

Industry standard wear tests just aren't tough enough. So, we developed our own—the **Appearance Retention Test (ART)**. ART considers real world conditions—wear, soiling and maintenance—for up to 20 year-increments. If an Interface carpet style doesn't pass, we won't launch it.



Breathe Easier

Intersept™ Only Interface carpet tiles are protected with Intersept, our safe and effective preservative that protects against odor-causing microorganisms. It's built into the backing system, so it won't wear off or wash away.



[interface.com/intersept](https://www.interface.com/intersept)

Maintenance Made Easy

Simple vacuuming, spot cleaning and routine deep cleaning are all you need to maintain Interface carpet tile—no special equipment or cleaning solutions.



[interface.com/maintenance](https://www.interface.com/maintenance)

Glue-free Installation

TacTiles™ Just peel, pull and stick for a hassle-free, durable carpet tile installation. No mess, no drying time and little, if any, future floor prep. And TacTiles connectors can be recycled with Interface carpet tiles.



[interface.com/tactiles](https://www.interface.com/tactiles)



Printed on 50% post consumer waste (PCW) fiber manufactured using wind power.

We have tried our very best to accurately represent product colors. However, due to the nature of printed materials, color of actual products may vary slightly. Please request a sample to see actual product color.

All product specifications reflect averages derived from product sample testing, are subject to normal manufacturing and testing tolerances and inherent pattern variances, and may be changed without notice. For more information about these and other important attributes of the product(s) described herein, including recycled content and product warranty information, please see www.interface.com/disclaimer.

Why Interface? | Innovation & Sustainability

Inspired by Nature

i2™ Nature doesn't design with perfectly matched materials, so why should we? Our i2 products are made to blend, not match. That means no dye lot concerns, so you order what you need when you need it. Bonus: Many i2 styles install with as little as 1.5% waste.



[interface.com/i2](https://www.interface.com/i2)

Closing the Loop

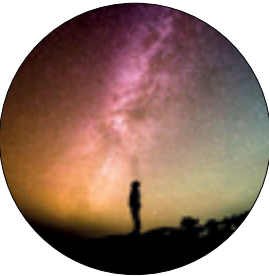
ReEntry™ We want our carpet tile and LVT back. Through our ReEntry program we reclaim and recycle our used carpet tile and LVT and turn it into new flooring.



[interface.com/reentry](https://www.interface.com/reentry)

Going Beyond Zero

Climate Take Back™ Interface has been on a purpose-driven journey to eliminate its negative environmental impact since 1994. We've achieved Mission Zero® success, and now live zero every day. Our bold mission continues with our commitment to overcoming the biggest challenge facing humanity—reversing global warming.



[interface.com/climatetakeback](https://www.interface.com/climatetakeback)

InterCircle Sample Return

Help us close the loop on the carpet sampling process. Through our InterCircle Sample Return program, sample materials stay out of the landfill and are re-used as samples until it is time to recycle them into new carpet. By reducing sample production material and diverting old materials from the landfill, we can reduce our overall environmental footprint.

Call 1.877.605.1500 (U.S.) or 1.866.398.3192 (Canada) to order a sample return bag with a prepaid return label.

www.interface.com

- Register at www.interface.com to:
- Browse products and order samples
 - View carpet in a variety of room scenes
 - Browse floor designs, change colors, view as a grid or in a room, download and share
 - Use our LEED Calculator
 - Check order status and inventory availability
 - Sign up to get the latest information on Interface products and news

Samples

Order samples at www.interface.com. You'll receive email order confirmations, 24/7 access to order status and more. Not near a computer? You can also request samples by calling one of the numbers below.

United States	Canada
1.877.605.1500	1.866.398.3192

Latin America
+ 52 55 6395 5100