





---

## PORTMANTEAU COLLECTION

Travel with your eyes wide open and your senses turned on.

Decoration and ornamentation are hardly trivial. They evoke memories, lift the spirits and, on occasion, take our breath away. How is it that the best of these are always reassuringly familiar, yet somehow surprisingly new?

At the center of the Portmanteau Collection are six patterns in a shamefully luscious construction. To help you carry the theme throughout the entire hotel, we have created two companions for each of the six patterns - incrementally diffusing the texture, so transitions can move slowly across the floor or abruptly for dramatic effect. And finally a texture, shared by all, like a loosely woven textile that beautifully offsets the graphic quality of the other patterns. And every bit of it is sink-your-toes-in depth. Don't mind if I do, Portmanteau.







**A**  
PRODUCT: PM49™  
SIZE: 50cm x 1m  
COLOR: 104769  
INSTALLATION: Ashlar

**COVER & PAGE 3**  
PRODUCT: PM01™ and PM39™  
SIZE: 25cm x 1m and 50cm x 1m  
COLOR: 104826 and 104756



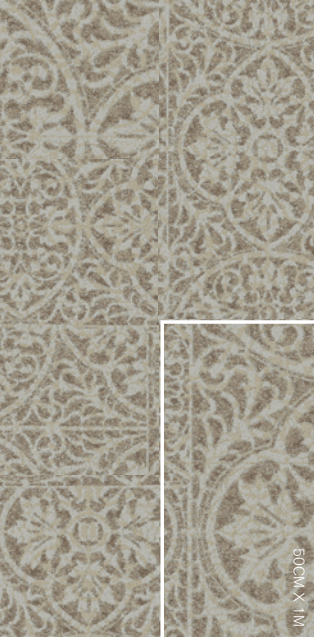




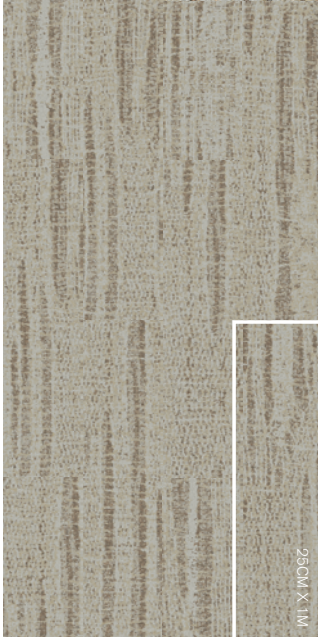


Collection  
PORTMANTEAU

PRODUCTS



PM49  
ASHLAR



PM01  
ASHLAR



PM47™  
ASHLAR



PM48™  
ASHLAR

Individual Yarn Placement







**B** PRODUCT: PW01  
SIZE: 25cm x 1m  
COLOR: 104829  
INSTALLATION: Ashlar

**A** PRODUCT: PW49  
SIZE: 50cm x 1m  
COLOR: 104769  
INSTALLATION: Ashlar





**A** PRODUCT: PM19  
SIZE: 50cm x 1m  
COLOR: 2791-03  
INSTALLATION: Ashlar

A

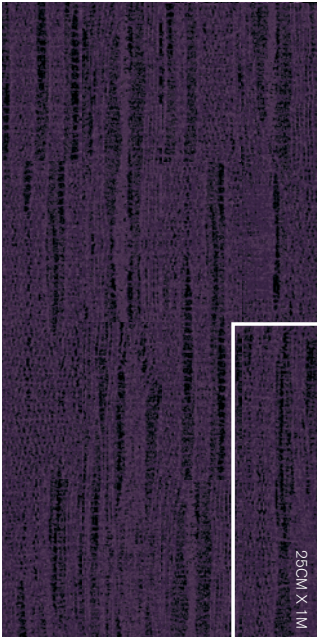


Collection  
PORTMANTEAU

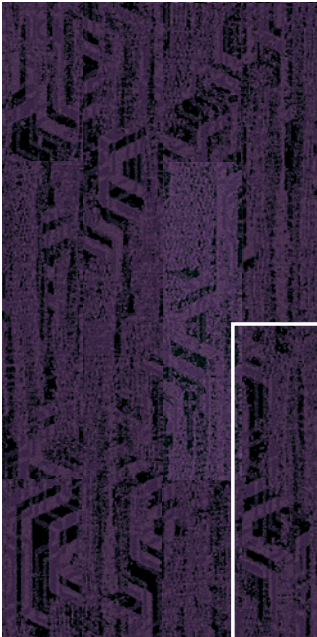
PRODUCTS



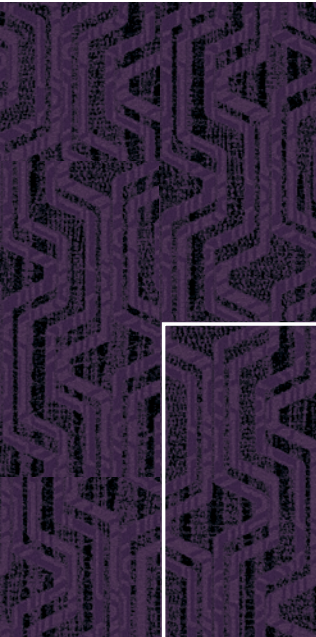
PM19™  
ASHLAR



PM01  
ASHLAR



PM17™  
ASHLAR



PM18™  
ASHLAR

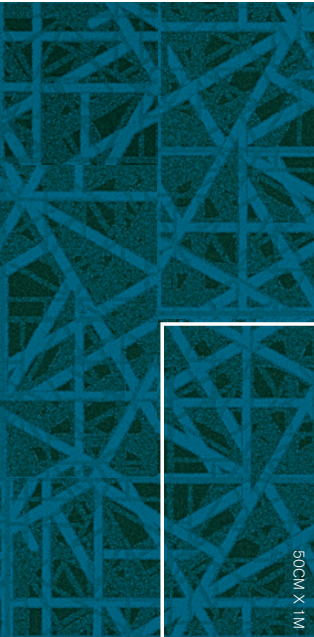
Individual Yarn Placement



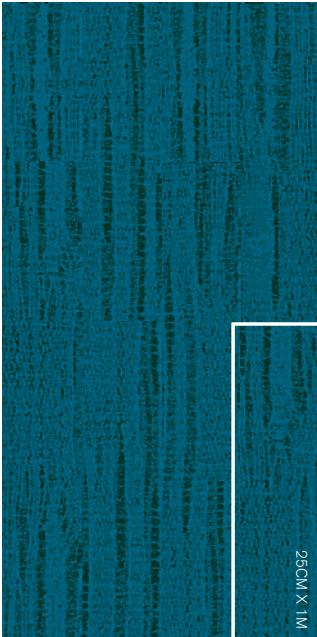


Collection  
PORTMANTEAU

PRODUCTS



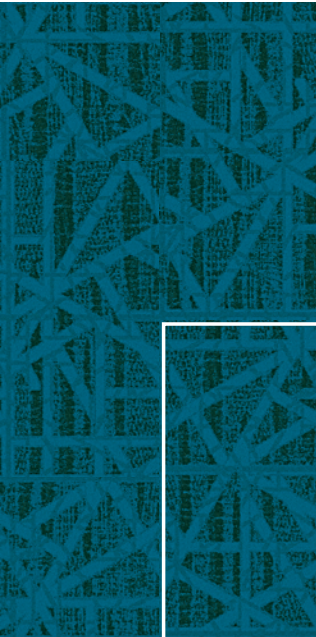
PM59™  
ASHLAR



PM01  
ASHLAR



PM57™  
ASHLAR



PM58™  
ASHLAR

Individual Yarn Placement







A

A  
PRODUCT: PM59  
SIZE: 50cm x 1m  
COLOR: 104787  
INSTALLATION: Ashlar



**A**  
PRODUCT: PM29  
SIZE: 50cm x 1m  
COLOR: 2759-02  
INSTALLATION: Ashlar

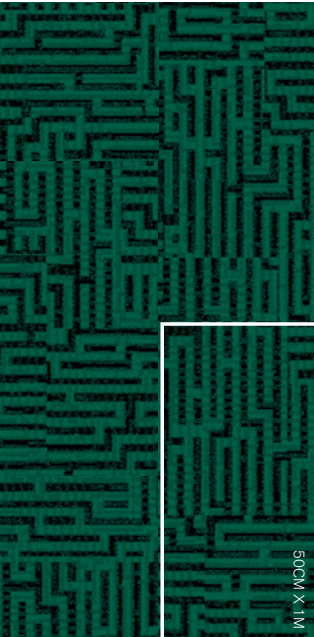


**A**

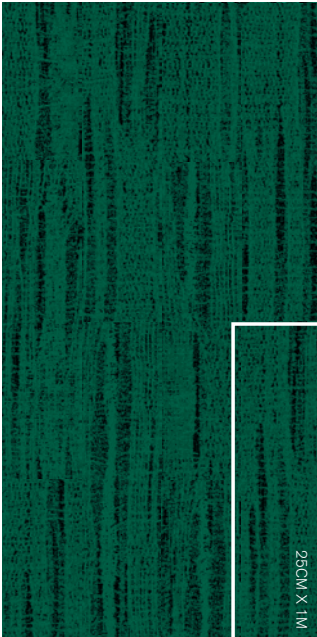


Collection  
PORTMANTEAU

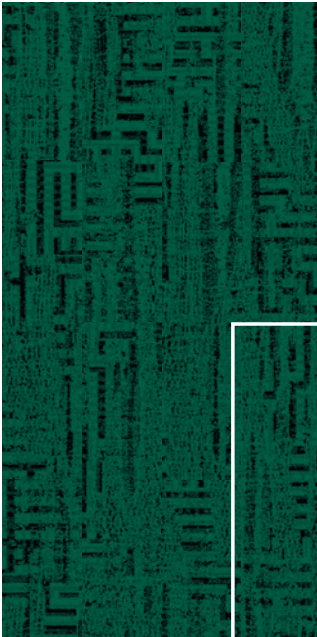
PRODUCTS



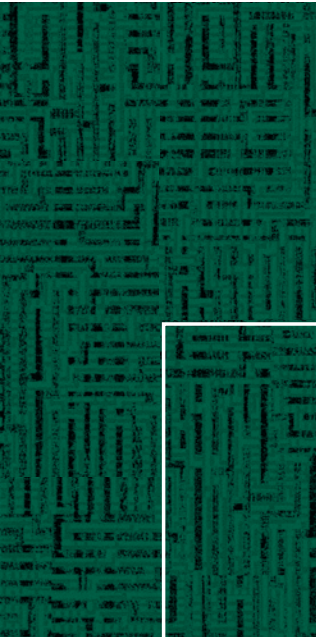
PM29™  
ASHLAR



PM01  
ASHLAR



PM27™  
ASHLAR



PM28™  
ASHLAR

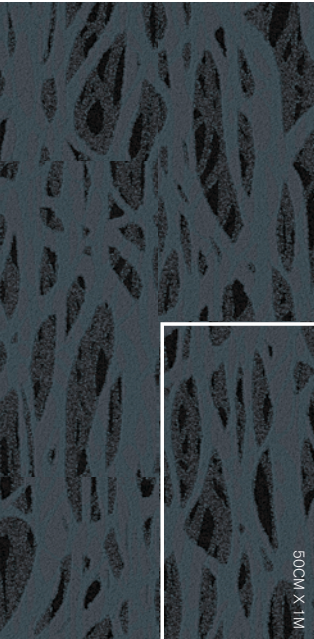
Individual Yarn Placement



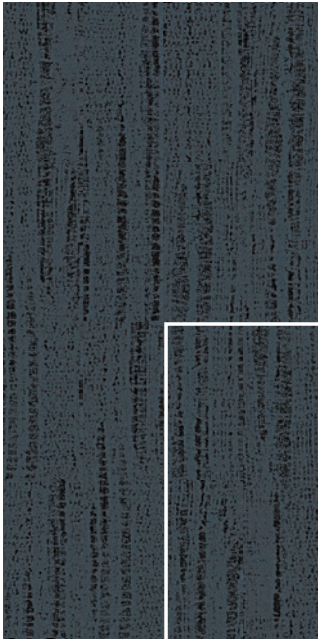


Collection  
PORTMANTEAU

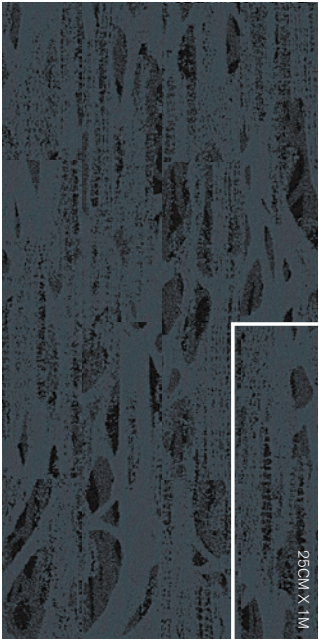
PRODUCTS



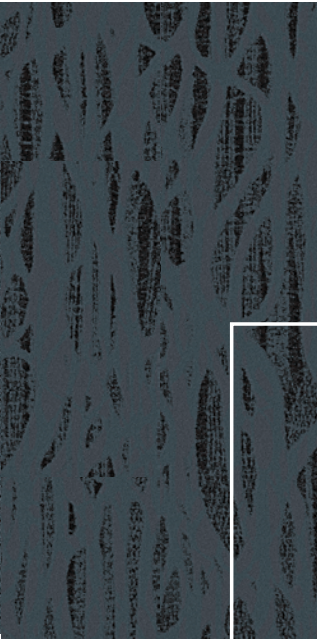
PM69™  
ASHLAR



PM01  
ASHLAR



PM67™  
ASHLAR



PM68™  
ASHLAR

Individual Yarn Placement







C

B

A

**A**  
PRODUCT: PM68  
SIZE: 50cm x 1m  
COLOR: 105109  
INSTALLATION: Ashlar

**B**  
PRODUCT: PM67  
SIZE: 25cm x 1m  
COLOR: 105169  
INSTALLATION: Ashlar

**C**  
PRODUCT: PM01  
SIZE: 25cm x 1m  
COLOR: 104828  
INSTALLATION: Ashlar

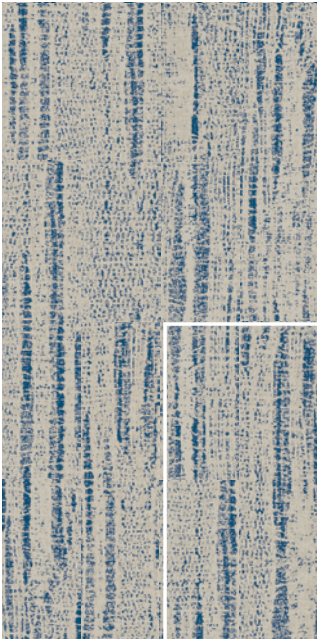


Collection  
PORTMANTEAU

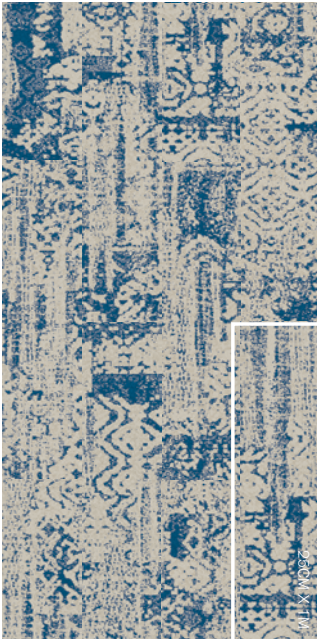
PRODUCTS



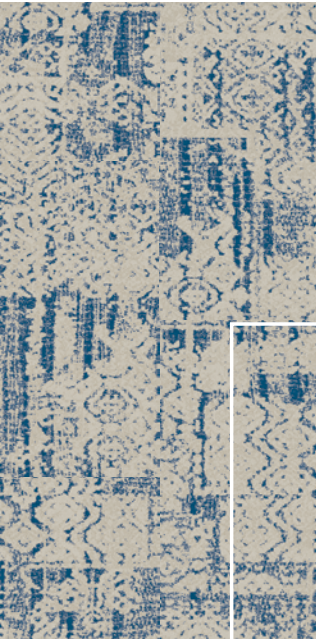
PM39™  
ASHLAR



PM01  
ASHLAR



PM37™  
ASHLAR



PM38™  
ASHLAR

Individual Yarn Placement







**C**  
PRODUCT: PM01  
SIZE: 50cm x 1m  
COLOR: 104826  
INSTALLATION: Ashlar

**B**  
PRODUCT: PM37  
SIZE: 25cm x 1m  
COLOR: 105137  
INSTALLATION: Ashlar

**A**  
PRODUCT: PM38  
SIZE: 50cm x 1m  
COLOR: 105077  
INSTALLATION: Ashlar



**A**  
PRODUCT: PM38  
SIZE: 50cm x 1m  
COLOR: 105077  
INSTALLATION: Ashlar

**B**  
PRODUCT: PM37  
SIZE: 25cm x 1m  
COLOR: 105137  
INSTALLATION: Ashlar

**C**  
PRODUCT: PM01  
SIZE: 1m x 50cm  
COLOR: 104826  
INSTALLATION: Ashlar











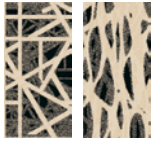
PM19

PM29



PM39

PM49



PM59

PM69

## PRODUCT SPECIFICATIONS

**PM19:** 127910AB00, **PM29:** 127890AB00,  
**PM39:** 127870AB00 **PM49:** 127880AB00,  
**PM59:** 127900AB00 **PM69:** 127920AB00  
 Style: Numbers Above (50cm x1m)

### Backing System

GlasBac® Tile

### Yarn System

100% Recycled Content Type 6 Nylon

### Yarn Manufacturer

Aquafil

### Color System

100% Solution Dyed

### Construction

Tufted Sheared

### Lifetime Antimicrobial

Intersept®

### Soil / Stain Protection

Protekt<sup>2®</sup>

### Pile Thickness

0.158 in., 4.0 mm

### Pile Density

7,291

### Total Recycled Content

66%

### Installation

Ashlar, Herringbone

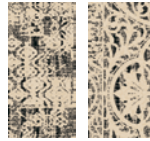
### CRI Green Label Plus

GLP0820



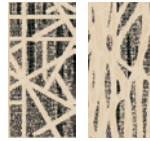
PM18

PM28



PM38

PM48



PM58

PM68

## PRODUCT SPECIFICATIONS

**PM18:** 128090AB00, **PM28:** 128070AB00,  
**PM38:** 128080AB00, **PM48:** 128090AB00  
**PM58:** 128100AB00, **PM68:** 128110AB00  
 Style: Numbers Above (50 cm x 1m)

### Backing System

GlasBac® Tile

### Yarn System

100% Recycled Content Type 6 Nylon

### Yarn Manufacturer

Aquafil

### Color System

100% Solution Dyed

### Construction

Tufted Sheared

### Lifetime Antimicrobial

Intersept®

### Soil / Stain Protection

Protekt<sup>2®</sup>

### Pile Thickness

0.133 in., 3.4 mm

### Pile Density

8,120

### Total Recycled Content

65%

### Installation

Ashlar, Herringbone

### CRI Green Label Plus

GLP0820



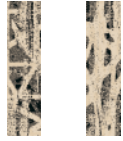
PM17

PM27



PM37

PM47



PM57

PM67

## PRODUCT SPECIFICATIONS

**PM17:** 128120AK00, **PM27:** 128130AK00,  
**PM37:** 128140AK00, **PM47:** 128150AK00,  
**PM57:** 128160AK00, **PM67:** 128170AK00  
 Style: Numbers Above (25cm x1m)

### Backing System

GlasBac® Tile

### Yarn System

100% Recycled Content Type 6 Nylon

### Yarn Manufacturer

Aquafil

### Color System

100% Solution Dyed

### Construction

Tufted Sheared

### Lifetime Antimicrobial

Intersept®

### Soil / Stain Protection

Protekt<sup>2®</sup>

### Pile Thickness

0.120 in., 3.0 mm

### Pile Density

9,000

### Total Recycled Content

65%

### Installation

Ashlar, Herringbone

### CRI Green Label Plus

GLP0820



PM01

## PRODUCT SPECIFICATIONS

### PM01

Style: 127940AK00 (25cm x 1m)

### Backing System

GlasBac® Tile

### Yarn System

100% Recycled Content Type 6 Nylon

### Yarn Manufacturer

Aquafil

### Color System

100% Solution Dyed

### Construction

Tufted Sheared

### Lifetime Antimicrobial

Intersept®

### Soil / Stain Protection

Protekt<sup>2®</sup>

### Pile Thickness

0.152 in., 3.9 mm

### Pile Density

6,632

### Total Recycled Content

65%

### Installation

Ashlar, Herringbone

### CRI Green Label Plus

GLP0820





**B** PRODUCT: PM01  
SIZE: 25cm x 1m  
COLOR: 104825  
INSTALLATION: Ashlar

**A** PRODUCT: PM19  
SIZE: 50cm x 1m  
COLOR: 104795  
INSTALLATION: Ashlar



## THE JOURNEY BEGINS HERE

Create a sensual experience for guests with a mix of pattern, texture and color that's uniquely yours.

1.



Product PM19  
50cm x 1m



Product PM01  
25cm x 1m



Product PM17  
25cm x 1m

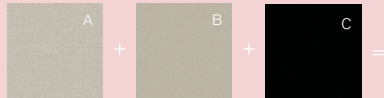


Product PM18  
50cm x 1m

Select a single product or multiple transition products within the collection.

2.

Working with your rep, select three different colors to find the perfect hues for your project. Portmanteau was designed using your lightest value colors in the A and B position. These two colors need to be very close in value. The C position is the darkest value to add visual depth to the product.



PM19



PM01



PM17



PM18

3.



When you have colored the pattern, we can produce samples in your palette.  
Contact your rep for sample orders.

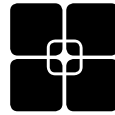


## WHY MODULAR CARPET TILE?



### Flexibility

*Keep Your Floor Beautiful.* Modular carpet tile allows you to play with pattern and design without having to special order carpet sizes. And the same flexibility that lets you create your floor helps you keep it looking good because in-house staff can easily replace individual tiles that become damaged or heavily soiled—no down time or outside contractors required.



### TacTiles®

*No Glue Installation.* Installation or reconfiguration with our glue-free TacTiles installation system means there's no glue smell and no drying time. Guests can use the room as soon as the last piece is laid and all they'll notice is a beautiful floor.



### Intersept®

*Mold Protection.* No matter what's spilled on the floor, our proprietary preservative, Intersept®, protects our modular carpet against the growth of odor-causing bacteria—guaranteed. With proper maintenance Intersept treated carpet safely and effectively inhibits the growth of mold and other bacteria so your floors are always fresh.



### Less Waste

*Save Money.* Interface Hospitality's carpet tile averages just 3.9% installation waste compared to as much as 18% or more with patterned roll carpet. Use our non directional styles with an average of 1.5% waste and save even more. That means more of your flooring investment stays on the floor—not in a dumpster.



### Sustainable Choice

*Environmental Responsibility.* Interface was the industry's first to earn an EPD (Environmental Product Declaration), which evaluates consistent factors based on full lifecycle assessment (LCA). In addition, all of our products with GlasBac®, GlasBacRE and NexStep® backings meet NSF/ANSI 140 Sustainable Assessment for Carpet.



### InterComfort™

*Comfort underfoot.* Offer guests the additional comfort and acoustical benefits of a cushion underlay with InterComfort, Interface Hospitality's cushion that installs easily and prevents damage to your subfloor. InterComfort is available in two formats—InterComfort PS+ for public spaces and InterComfort GR for guest rooms.

cool carpet™



#### Cool Carpet™

Our third party verified carbon offset program zeroes out all greenhouse gas (GHG) emissions associated with the entire lifecycle of your carpet.

#### Sustainable Assessment for Carpet

The only carpet sustainability standard in North America that evaluates the environmental impact of carpet for its entire lifecycle.

#### CRI Green Label Plus

An independent testing program that identifies carpet and adhesives with very low emissions of VOCs to help improve indoor air quality.

#### Environmental Product Declaration (EPD)

A statement of product ingredients and environmental impacts over the entire lifecycle of a product. A comprehensive life cycle assessment (LCA) is performed to ISO standards to develop an EPD, after which both the EPD and the LCA must be third party verified.





**[www.interfacehospitality.com](http://www.interfacehospitality.com)**

**United States Headquarters**

1503 Orchard Hill Road  
LaGrange, GA 30240  
1.800.336.0225 ext.6511

**Canadian Headquarters**

233 Lahr Drive  
Belleville, ON K8N 5S2  
1.800.267.2149 ext.2128

**Mexican Headquarters**

Montes Urales # 415 Piso 6  
Col. Lomas de Chapultepec  
México City, D.F. 11000  
+ 52 55 6395 5100

**Latin American Headquarters**

Rua Surubim, 577 - Conjuntos  
73/74 7º Andar  
04571-050 - São Paulo - SP  
Brazil  
+ 55 11 2196 0900

11/2015  
IFS00698

**Interface** *Hospitality*

