

Platform,™ Main Line™
& Sidetrack™

Interface®

Platform™, Main Line™ & Sidetrack™

Platform is the essential solution you've relied upon for years; a timeless texture that has traveled from swanky uptown to hipster downtown and every stop in between. It's the simplicity of the pattern and the palette that makes Platform so accessible.

Now joined by Main Line and Sidetrack, this collection of three styles has a broader reach. Keeping the fundamentals of Platform intact, Sidetrack introduces three distinctly placed accent threads while Main Line blends those same accents throughout the otherwise neutral yarns.

With a shared palette and common construction, Platform, Main Line and Sidetrack are linked together like cars on a train - three different vehicles moving in the same direction.



Platform™ Colourline



1474-001-000 Bisque



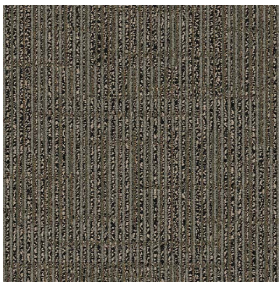
1474-002-000 Cordovan



1474-003-000 Cornsilk



1474-004-000 Muscovite



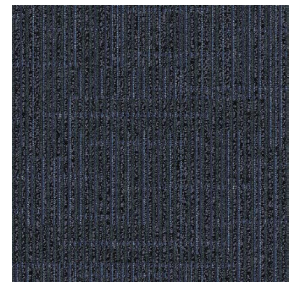
1474-005-000 Hazel



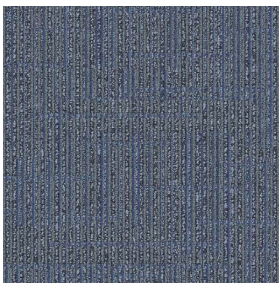
1474-006-000 Hemlock



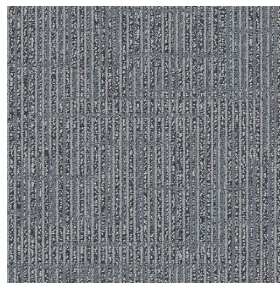
1474-007-000 Opal



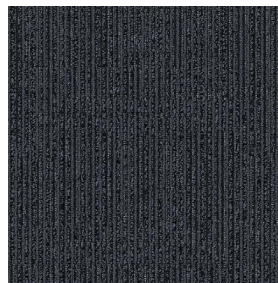
1474-008-000 Stratosphere



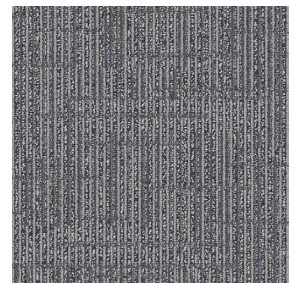
1474-009-000 Denim



1474-010-000 Steel

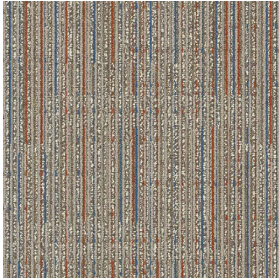


1474-011-000 Nubian

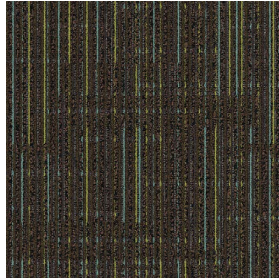


1474-012-000 Battleship

Main Line™ Colourline



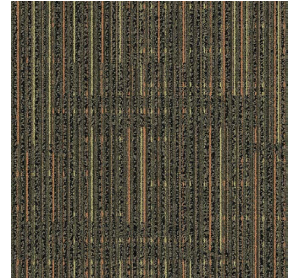
7641-013-000 Bisque/Line



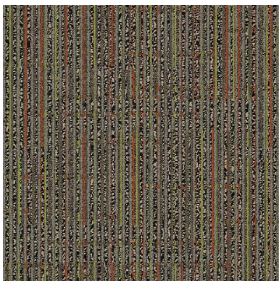
7641-014-000 Cordovan/Line



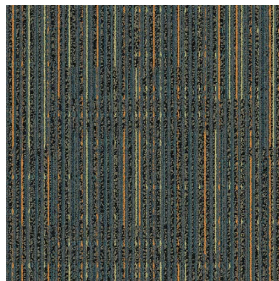
7641-012-000 Cornsilk/Line



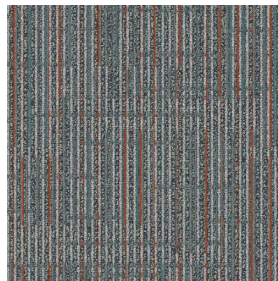
7641-015-000 Muscovite/Line



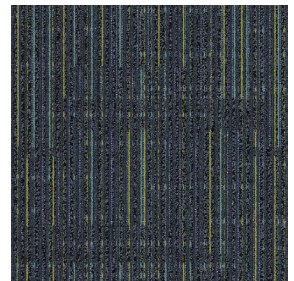
7641-007-000 Hazel/Line



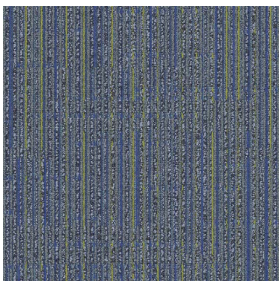
7641-016-000 Hemlock/Line



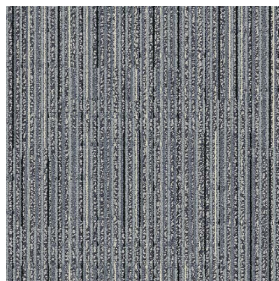
7641-017-000 Opal/Line



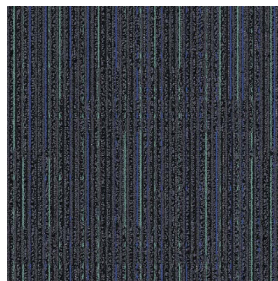
7641-001-000 Stratosphere/Line



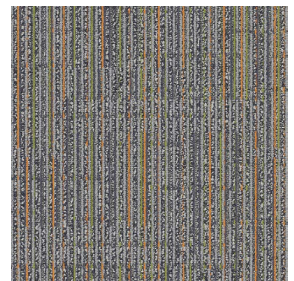
7641-002-000 Denim/Line



7641-003-000 Steel/Line

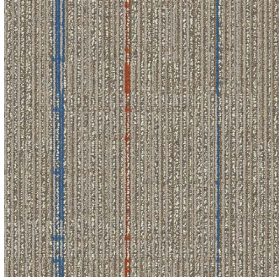


7641-004-000 Nubian/Line

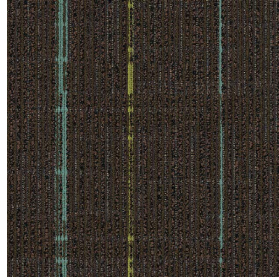


7641-005-000 Battleship/Line

Sidetrack™ Colourline



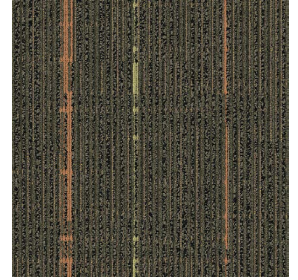
7642-013-000 Bisque/Track



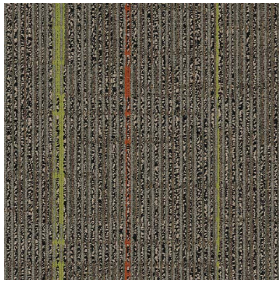
7642-014-000 Cordovan/Track



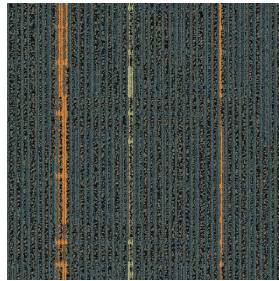
7642-012-000 Cornsilk/Track



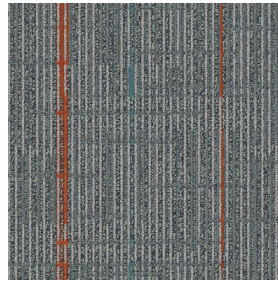
7642-015-000 Muscovite/Track



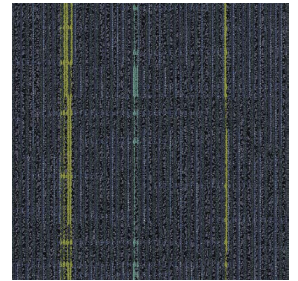
7642-007-000 Hazel/Track



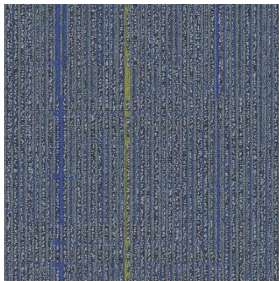
7642-016-000 Hemlock/Track



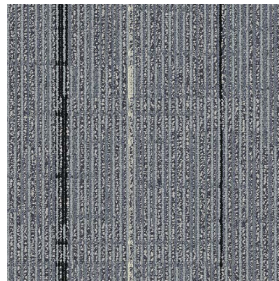
7642-017-000 Opal/Track



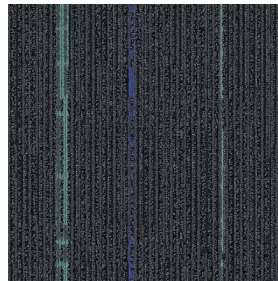
7642-001-000 Stratosphere/Track



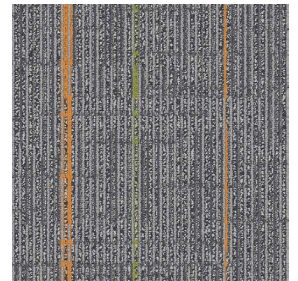
7642-002-000 Denim/Track



7642-003-000 Steel/Track



7642-004-000 Nubian/Track



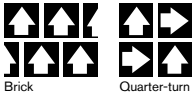
7642-005-000 Battleship/Track

Specifications

Platform™

Style Code	1474 Pattern 000
Product Definition	Tufted Textured Loop
Yarn/Fibre	OptimumRE SD Type 6.6 Nylon
Colour System	100% Solution Dyed
Machine Gauge	1/12
Pile Thickness	3.0mm +/- 0.5mm
Total Thickness	6.5mm +/- 0.5mm
Tile Size	50cm x 50cm
Area of Use	Commercial – Heavy Duty
Lifetime Antimicrobial	Intersept®
Soil/Stain Protection	Protekt2®
Total Recycled Content	GlasBac® 42% to 51% recycled content GlasBac®RE 62% to 74% recycled content

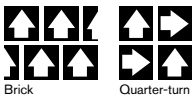
Installation Methods



Main Line™

Style Code	7641 Pattern 000
Product Definition	Tufted Textured Loop
Yarn/Fibre	OptimumRE SD Type 6.6 Nylon
Colour System	100% Solution Dyed
Machine Gauge	1/12
Pile Thickness	3.0mm +/- 0.5mm
Total Thickness	6.5mm +/- 0.5mm
Tile Size	50cm x 50cm
Area of Use	Commercial – Heavy Duty
Lifetime Antimicrobial	Intersept®
Soil/Stain Protection	Protekt2®
Total Recycled Content	GlasBac® 42% to 51% recycled content GlasBac®RE 62% to 74% recycled content

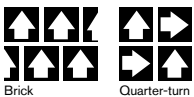
Installation Methods



Sidetrack™

Style Code	7642 Pattern 000
Product Definition	Tufted Textured Loop
Yarn/Fibre	OptimumRE SD Type 6.6 Nylon
Colour System	100% Solution Dyed
Machine Gauge	1/12
Pile Thickness	3.0mm +/- 0.5mm
Total Thickness	6.5mm +/- 0.5mm
Tile Size	50cm x 50cm
Area of Use	Commercial – Heavy Duty
Lifetime Antimicrobial	Intersept®
Soil/Stain Protection	Protekt2®
Total Recycled Content	GlasBac® 42% to 51% recycled content GlasBac®RE 62% to 74% recycled content

Installation Methods



OptimumRE

CoolCarpet™

Intersept®

Production specifications are subject to normal manufacturing tolerances and may be changed without notice. Slight variation in colour among different production lots are normal and should be considered in the overall installation plan. Products covered by manufacturer's written warranty only. All other warranties, including without limitation any implied warranties of merchantability or fitness for particular purpose, are hereby disclaimed. Contact your representative for written warranty information. Recycled content calculations are based on historical averages by total weight of the product for backings. Yarn/Fibre recycled content calculation excludes backing. We update our recycled content information and other environmental data regularly to reflect changes and advancements in our technology.

*Cool Carpet is not a standard option in Australia and New Zealand.

