

[www.interface.com](http://www.interface.com)

**United States Headquarters**

1503 Orchard Hill Road  
LaGrange, GA 30240  
1.800.336.0225 ext.6511

**Canadian Headquarters**

233 Lahr Drive  
Belleville, ON K8N 5S2  
1.800.267.2149 ext.2128

**Brazilian Headquarters**

Rua Surubim, 577 - Conjuntos  
73/74 7º Andar  
04571-050 - São Paulo - SP  
+ 55 11 2196 0900

**Latin American Headquarters**

Montes Urales # 415 Piso 6  
Col. Lomas de Chapultepec  
México City, D.F. 11000  
Mexico  
+ 52 55 6395 5100

CIM # IFS00678 04/2015



**Mission Zero®**

our promise to eliminate any  
negative impact our company  
may have on the environment  
by the year 2020.

Phonic  
Collection

**Interface®**



Phonic™ Collection

In language, sounds guide us to meaning. Phonic presents the patterns and vibrations that help us navigate interior environments. It's a resounding rhythm of bands that break and give way to one another in surprising ways, steering us to the right space and punctuating the experience we will have when we get there.

Quiet spaces can be defined within the plan when PH211™ is installed alone. But PH210™ enunciates a big graphic idea—the skinny plank format, the random effect of the repeat and the way in which it attaches to and detaches from its companion PH211, pronouncing a bright new tempo for the floor.







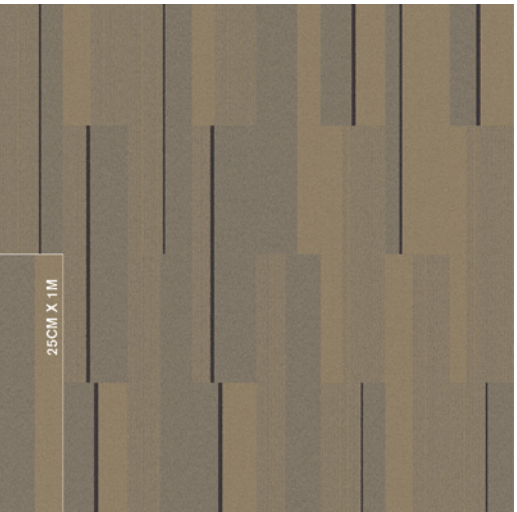




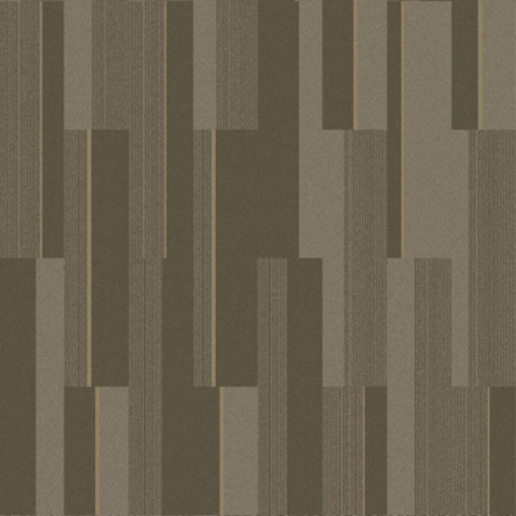


PH210™ Colorline

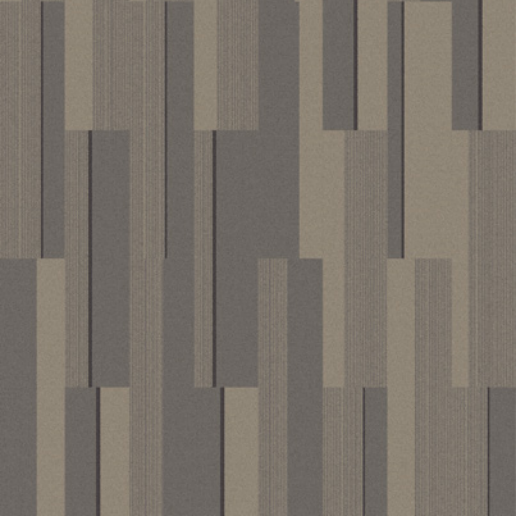
The colorline grids below are all shown in a 2m x 2m ashlar installation to illustrate the broad variation within each color of PH210.



104676 SPICE BANDS



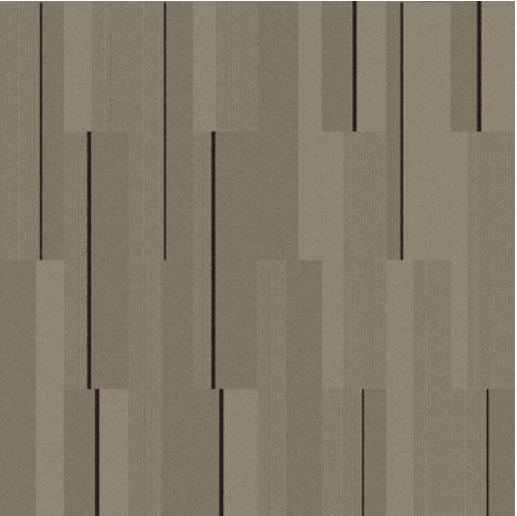
104677 OLIVE BANDS



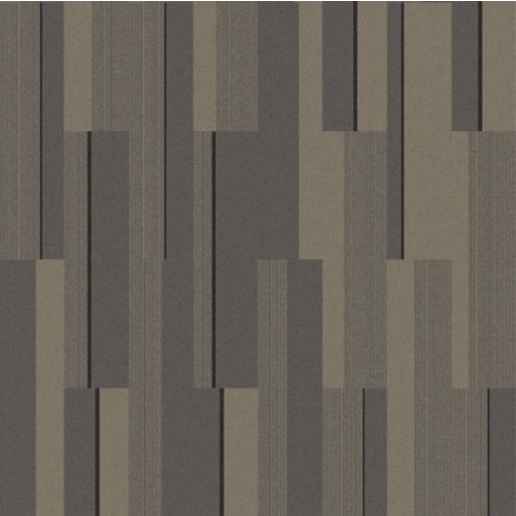
104680 PIGEON BANDS



104681 DUSK BANDS



104678 OYSTER BANDS



104679 HERB BANDS



104682 PEPPER BANDS



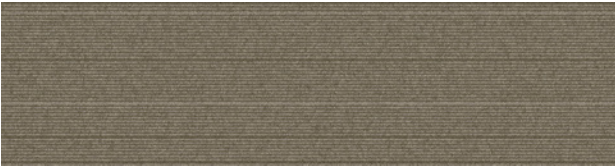
104683 ONYX BANDS



PH211™ Colorline



104684 SPICE



104685 OLIVE



104686 OYSTER



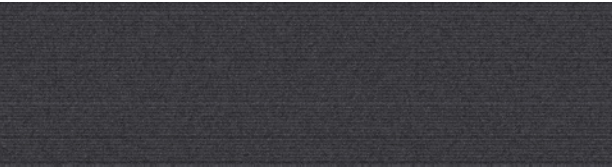
104687 HERB



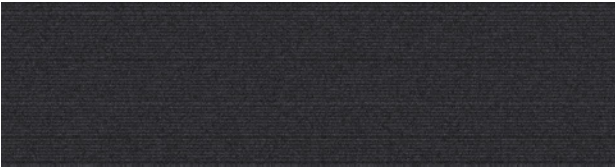
104688 PIGEON



104689 DUSK



104690 PEPPER



104691 ONYX

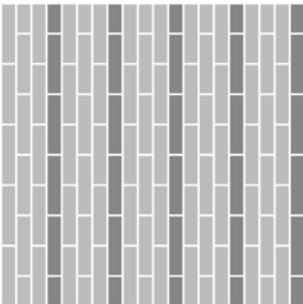




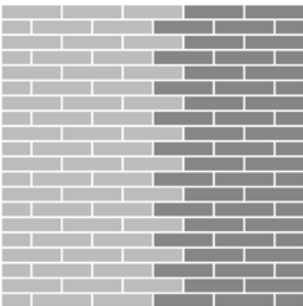
Design Ideas Below are floor layouts showing how to create the design ideas shared in several of the images featured in this brochure.



■ **PRODUCT** PH210 **COLOR** 104682 PEPPER BANDS  
■ **PRODUCT** PH210 **COLOR** 104679 HERB BANDS



■ **PRODUCT** PH211 **COLOR** 104691 ONYX  
■ **PRODUCT** PH210 **COLOR** 104683 ONYX BANDS



■ **PRODUCT** PH211 **COLOR** 104689 DUSK  
■ **PRODUCT** PH210 **COLOR** 104681 DUSK BANDS

Specifications



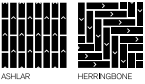
PH210

Modular, 25cm x 1 m	127840AK00
Backing System	GlasBac® Tile
Yarn Manufacturer	Aquafil
Yarn System	100% Recycled Content Type 6 Nylon
Color System	100% Solution Dyed
Construction	Tufted Pattern Loop
Preservative Protection	Intersept®
Soil/Stain Protection	Protekt <sup>2</sup> ®
Pile Thickness	0.100 in., 2.5 mm
Pile Density	5,143
Total Recycled Content	60%
Indoor Air Quality	CRI Green Label Plus #GLP0820



PH211

Modular, 25cm x 1 m	127850AK00
Backing System	GlasBac® Tile
Yarn Manufacturer	Aquafil
Yarn System	100% Recycled Content Type 6 Nylon
Color System	100% Solution Dyed
Construction	Tufted Pattern Loop
Preservative Protection	Intersept®
Soil/Stain Protection	Protekt <sup>2</sup> ®
Pile Thickness	0.100 in., 2.5 mm
Pile Density	5,143
Total Recycled Content	60%
Indoor Air Quality	CRI Green Label Plus #GLP0820



Why Our Modular Carpet?



Modular Carpet Tile

*Performance and Flexibility.* Interface's modular carpet tile sets the industry standard for performance. Tiles are designed to stay on the floor with no upcurl, tapping or rippling. Our square and plank tiles are easier to handle, install and maintain. They install with just 3-4% waste – and as little as 1.5% for i2® non directional styles – compared to an average 14% for traditional roll carpet. And our i2 styles are mergeable so tiles from multiple dye lots will always blend, even when selectively replaced years later.



Cool Carpet™

*The Low Carbon Option.* Help stop climate change. ALL Interface modular carpet sold in North America is third party verified climate neutral Cool Carpet. We start by using low-carbon materials and manufacturing processes, then Cool Carpet zeros out all remaining greenhouse gas (GHG) emissions associated with the entire lifecycle of your carpet from raw material extraction through use and recycling. And climate neutral Cool Carpet may be eligible for a USGBC or CaGBC LEED Innovation Credit.



TacTiles®

*No Glue Installation.* Our revolutionary TacTiles installation system eliminates the need for glue, adhering tiles securely together to form a floor that “floats” for greater flexibility, easier replacement and long-term performance. The result? Less mess, less waste and virtually no VOCs, not to mention an environmental footprint that is over 90% lower than that of traditional glue adhesives.



Intersept®

*Mold Protection.* Our proprietary preservative, Intersept, protects our modular carpet against mold growth and odor-causing bacteria — guaranteed. Intersept treated carpet, with proper maintenance, shows no mold or bacterial growth when tested per the ASTM E2471 Standard Test Method. Intersept is EPA approved for safe use in carpet, water insoluble and contains no halogens, heavy metals, phenols or formaldehyde.



ReEntry®

*Recyclable is Now a Reality.* Through our ReEntry program and partnerships with our fiber suppliers and recycling centers throughout North America, separated Type 6 and 6,6 nylon are recycled into new 6 and 6,6 nylon, while separated GlasBac® and similar competitor backings are recycled into GlasBacRE non-virgin PVC backing using our Cool Blue™ technology. The result? Products with up to 81% total recycled content, including as much as 35% post-consumer content.



Sustainable Choice

*Environmental Responsibility.* Interface was the industry's first to publish an EPD (Environmental Product Declaration), which evaluates consistent factors based on full lifecycle assessment (LCA). We now have published EPDs for more than 99% of our products gobally.

In addition, all Interface products with GlasBacRE backing meet the Platinum level of the NSF/ ANSI 140 Sustainable Assessment for Carpet. GlasBac or NexStep® backed products meet the Gold level. All may contribute toward a USGBC or CaGBC LEED Innovation Credit.

Samples

Order samples at [www.interface.com](http://www.interface.com). You'll receive email order confirmations, 24/7 access to order status and more. Not near a computer? You can also request samples by calling one of the numbers below.

United States 1.877.605.1500	Canada 1.866.398.3192
Brazil + 55 11 2196 0900	Latin America + 52 55 6395 5100

[www.interface.com](http://www.interface.com)

- Register at [www.interface.com](http://www.interface.com) to:
- Browse products and order samples
  - View carpet in a variety of room scenes
  - Use the Floors tool to create designs you can save or share OR
  - Design mood boards and floors that you can save or share
  - Use our LEED Calculator
  - Check order status and inventory availability
  - Sign up to get the latest information on Interface products and news

InterCircle™ Sample Return

Help us close the loop on the carpet sampling process. Through our InterCircle Sample Return program, sample materials stay out of the landfill and are re-used as samples until it is time to recycle them into new carpet. By reducing sample production material and diverting old materials from the landfill, we can reduce our overall environmental footprint.

Call 1.877.605.1500 (U.S.) or 1.866.398.3192 (Canada) to order a sample return bag with a prepaid return label.

Third Party Certification



**Cool Carpet** – Our third party verified carbon offset program zeroes out all greenhouse gas (GHG) emissions associated with the entire lifecycle of your carpet.



**Environmental Product Declaration (EPD)** – A statement of product ingredients and environmental impacts over the entire life cycle of a product. A comprehensive life cycle assessment (LCA) is performed to ISO standards to develop an EPD, after which both the EPD and LCA must be third party verified.



**Sustainable Assessment for Carpet** – The only carpet sustainability standard in North America that evaluates the environmental impact of carpet for its entire lifecycle.



**CRI Green Label Plus** – An independent testing program that identifies carpet and adhesives with very low emissions of VOCs to help improve indoor air quality.

All product specifications reflect averages derived from product sample testing, are subject to normal manufacturing and testing tolerances and inherent pattern variances, and may be changed without notice. For more information about these and other important attributes of the product(s) described herein, including recycled content and product warranty information, please see [www.interface.com/disclaimer](http://www.interface.com/disclaimer).



**RECYCLED**  
Paper made from recycled material  
**FSC® C009723**



Printed on 50% post consumer waste (PCW) fiber manufactured using wind power.

We have tried our very best to accurately represent product colors. However, due to the nature of printed materials, color of actual products may vary slightly. Please request a sample to see actual product color.