A modern office lounge with a large window overlooking a city skyline. The room features a light gray modular sofa with dark blue and patterned cushions. A white oval coffee table holds a stack of books. A small metal side table with a blue mug and books is next to the sofa. The floor is covered in dark gray carpet tiles. Large potted plants are in the corner. The ceiling has exposed ductwork and a track light.

Perfect Pitch Collection

Obligato
Intermedio
Diminuendo

Interface®

Perfect Pitch™ Collection

Always hit the right note.

Like music, design is about creating harmony and balance while using dynamics to keep things interesting. Our new Perfect Pitch collection brings the earthy tones and textural shifts in nature to the modern workplace. With three styles, Obligato™, Intermedio™ and Diminuendo™, Perfect Pitch sets the right tone for all of your spaces. When combined, the sophisticated, variegated texture of the three skinny plank carpet tiles create a sense of warmth and harmony across the floor that is both functional and aesthetic.

When you specify flooring from Interface, you're selecting products that are carbon neutral across their full product life cycle.

(COVER) **PRODUCT** OBLIGATO **COLOR** 106709 SHALE

PRODUCT INTERMEDIO **COLOR** 106702 SHALE **INSTALLED** PATTERN BY TILE

PRODUCT DIMINUENDO **COLOR** 106694 SHALE **INSTALLED** ASHLAR



PRODUCT OBLIGATO COLOR 106710 FELDSPAR
PRODUCT DIMINUENDO COLOR 106695 FELDSPAR INSTALLED ASHLAR

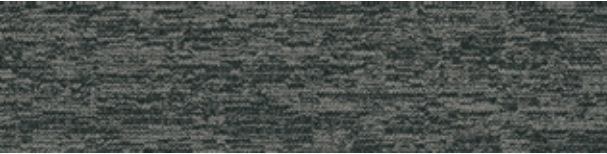
Obligato Colorline



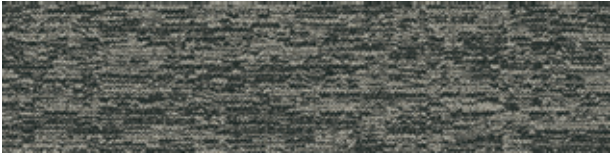
106554 MICA



106555 FLINT



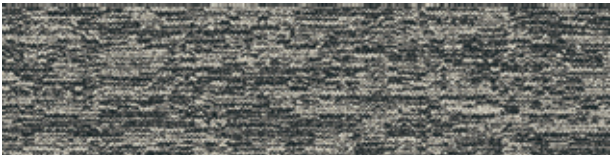
106709 SHALE



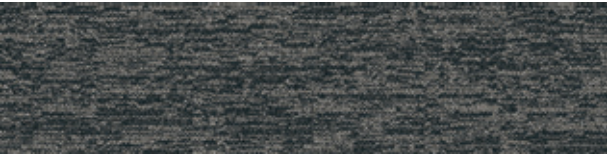
106710 FELDSPAR



106711 GRAPHITE



106712 ONYX



106713 BASALT



106714 TRAVERTINE

Obligato was previously named DL908

Specifications

Modular, 25cm x 1m	150110AK0G
Backing System	CQuest™GB
Yarn Manufacturer	Aquafil
Yarn System	100% Recycled Content Nylon
Color System	100% Solution Dye
Construction	Tufted Pattern Loop
Preservative Protection	Intersept®
Soil/Stain Protection	Protekt2™
Pile Thickness	0.125 in., 3.2 mm
Pile Density	7,200
Total Recycled Content	84%
Indoor Air Quality	CRI Green Label Plus #GLP0820

Installation Methods



ASHLAR



HERRINGBONE



BROWSE IMAGES
ORDER SAMPLES



PRODUCT OBLIGATO COLOR 106713 BASALT INSTALLED ASHLAR



Intermedio Colorline



106701 FLINT



106702 SHALE



106703 FELDSPAR



106704 GRAPHITE



106705 ONYX



106706 MICA



106707 BASALT



106708 TRAVERTINE

Intermedio was previously named DL909

Specifications

Modular, 25cm x 1m	150270AK0G
Backing System	CQuest™GB
Yarn Manufacturer	Aquafil
Yarn System	100% Recycled Content Nylon
Color System	100% Solution Dye
Construction	Tufted Pattern Loop
Preservative Protection	Intersept®
Soil/Stain Protection	Protekt2™
Pile Thickness	0.099 in., 2.5 mm
Pile Density	8,727
Total Recycled Content	84%
Indoor Air Quality	CRI Green Label Plus #GLP0820

Installation Methods



ASHLAR



HERRINGBONE



BROWSE IMAGES
ORDER SAMPLES

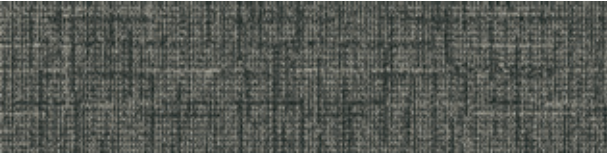
Diminuendo Colorline



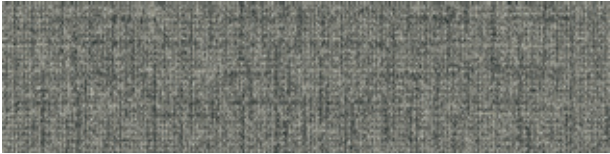
106693 FLINT



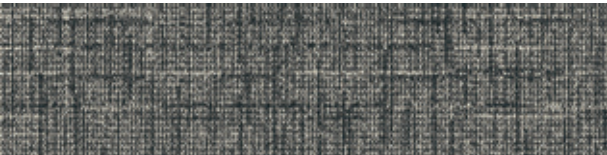
106694 SHALE



106695 FELDSPAR



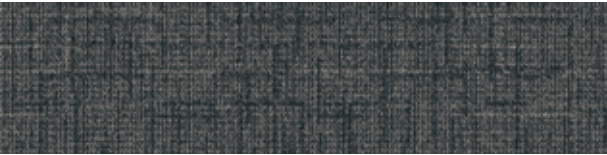
106696 GRAPHITE



106697 ONYX



106698 MICA



106699 BASALT



106700 TRAVERTINE

Diminuendo was previously named DL910

Specifications

Modular, 25cm x 1m	150250AK0G
Backing System	CQuest™GB
Yarn Manufacturer	Aquafil
Yarn System	100% Recycled Content Nylon
Color System	100% Solution Dye
Construction	Tufted Pattern Loop
Preservative Protection	Intersept®
Soil/Stain Protection	Protekt ² ™
Pile Thickness	0.08 in., 2 mm
Pile Density	9,900
Total Recycled Content	84%
Indoor Air Quality	CRI Green Label Plus #GLP0820

Installation Methods



ASHLAR



HERRINGBONE



BROWSE IMAGES
ORDER SAMPLES



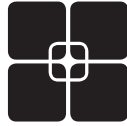
Why Our Modular Flooring?



Modular Flooring

Performance and flexibility.

Interface's standard backing systems set the industry standard for modular performance. Tiles stay on the floor with no upcurl, no tapping and no rippling effect, yet are easy to selectively replace. Our modular carpet is easier to handle than bulky roll carpet and produces an average of just 3-4% waste compared to roll carpet's average of 14%. And it installs seamlessly with our LVT, no transition strips needed.



TacTiles™

No glue installation. Our revolutionary TacTiles installation system eliminates the need for glue, adhering tiles securely together to form a floor that “floats” for greater flexibility, easier replacement and long-term performance. The result? Less mess, less waste and virtually no VOCs, not to mention an environmental footprint that is over 90% lower than that of traditional glue adhesives. TacTiles are approved for use on GlasBac™, GlasBacRE, CQuest™GB, Graphlar™ and Graphlex™.



Intersept®

Mold protection. Our proprietary preservative, Intersept, protects our modular carpet against mold growth and odor-causing bacteria—guaranteed. Intersept treated carpet, with proper maintenance, shows no mold or bacterial growth when tested per the ASTM E2471 Standard Test Method. Intersept is EPA approved for safe use in carpet, water insoluble and contains no halogens, heavy metals, phenols or formaldehyde. Intersept is standard in Interface carpet tile products backed with GlasBac, GlasBacRE, CQuestGB, ReadyBac™, and CushionBac Renew™.



Sustainability Transparency

Transparency and certified sustainability leadership come standard on Interface products, including published ingredients in HPDs (Health Product Declarations) and published EPDs (Environmental Product Declarations), which are based on full life cycle assessment (LCA). And, Interface carpet products are certified to the NSF 140 Sustainable Carpet Assessment Standard. Additionally, Interface flooring and recommended adhesives are 3rd party certified for low VOC emissions in compliance with California Department of Public Health (CDPH) Standard Method v1.2–2017. Carpet products made in our US facilities are made with 99% renewable energy.



ReEntry™

Keep flooring out of landfills. Through our ReEntry program, we reclaim our carpet tile and Sound Choice™ LVT. Vinyl backed carpet tile is recycled into new CQuest™GB carpet tile backing. The result? Carpet tile products with up to 85% total recycled content, including as much as 25% post-consumer content.



Carbon Neutral Floors™

The flooring products that we sell, including carpet tile, are carbon neutral across their full product life cycle through our third party verified Carbon Neutral Floors™ program. To find out more, visit interface.com/carbonneutralfloors



Sustainable Assessment for Carpet – The only carpet sustainability standard in North America that evaluates the environmental impact of carpet for its entire lifecycle.



CRI Green Label Plus – An independent testing program that identifies carpet and adhesives with very low emissions of VOCs to help improve indoor air quality.



Environmental Product Declaration (EPD) – A statement of product ingredients and environmental impacts over the entire life cycle of a product. A comprehensive life cycle assessment (LCA) is performed to ISO standards to develop an EPD, after which both the EPD and LCA must be third party verified.



PRODUCT OBLIGATO **COLOR** 106555 FLINT **INSTALLED** ASHLAR
PRODUCT INTERMEDIO **COLOR** 106701 FLINT **INSTALLED** PATTERN BY TILE
PRODUCT DIMINUENDO **COLOR** 166695 FELDSPAR **INSTALLED** ASHLAR



RECYCLED
Paper made from
recycled material
FSC® C009723



PLEASE RECYCLE

Printed on 50% post consumer waste (PCW) fiber
manufactured using wind power.

We have tried our very best to accurately represent
product colors. However, due to the nature of printed
materials, color of actual products may vary slightly.
Please request a sample to see actual product color.

interface.com

United States Headquarters

1280 West Peachtree Street NW
Atlanta, GA 30309
1.800.634.6032

Canadian Headquarters

233 Lahr Drive
Belleville, ON K8N 5S2
1.800.267.2149 ext.52128

Brazilian Headquarters

Av. Das Nações Unidas 14261
25 andar, sala 25 -122, Brooklin Paulista
São Paulo SP 04578 - 000
Brasil
+ 5511.2196.0900

Latin American Headquarters

Montes Urales # 415 Piso 6
Lomas de Chapultepec
Miguel Hidalgo, CDMX
11000 Mexico
+ 52.55.2791.6812

CIM # IFS00891 05/2021



Climate change is undeniable. And
reversible. Our mission is to prove it.
**Join the #ClimateTakeBack and
help create a climate fit for life.**