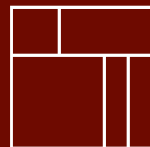


Interface®



# Past Forward.™



**Remastered,  
reimagined  
and remade.**



**Introducing  
Past Forward™; a  
modern carpet collection  
from Interface®, inspired  
by decades of innovation  
and iconic designs.**

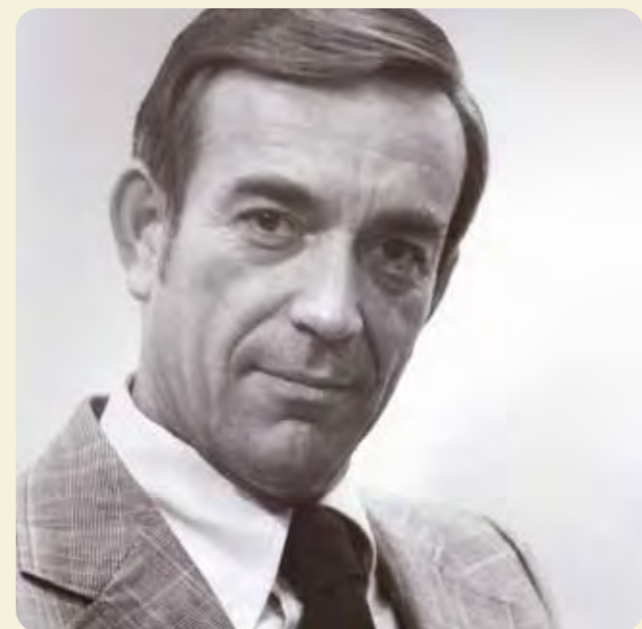
# 1973

**1973 — the year Interface founder, Ray Anderson first introduced carpet tile to the America's, after discovering it during a European trip. Together with his team, Ray led the innovative charge, developing the Interface carpet tile of the future.**



THE EARLY DAYS OF INTERFACE

**While at the time, these tiles had limited design capabilities, Ray imagined their usage within the new open office. Recognising their performance potential to reduce noise levels and create a softened ambience in shared spaces, he seized the opportunity to reinvent the modular tile and revolutionize commercial interior design.**



RAY ANDERSON, 1973.

Born and raised in Kidderminster, England, the designer of our Past Forward Collection, David Oakey was honing his craft, just some streets away from where Ray Anderson first masterminded his product. And as if by fate, their paths would continue to cross when David answered a job advertisement in a trade magazine to relocate to the town of LaGrange, Georgia – in the very same year and location where Interface set up its first manufacturing facility.

**WANTED!  
ENGLISH CARPET  
DESIGNER**

**Just as David celebrates fifty years designing carpets in the United States, Interface is celebrating fifty years of design and manufacturing. This shared anniversary inspired a look back through the design trends that have come and gone, as well as contemplating how they might influence interiors of today.**



### **'60s-'70s**

From the interiors of the '60s that preceded the carpet tile, we saw traditional, muted hued area rugs to diverse patterns of wall-to-wall broadloom featuring the look of Mid-Century Modern, as well as abstraction, Art Nouveau, Art Deco and English Craft designs in bold bright colours.

In the '70s we saw the continuation of impactful patterns moving towards "groovy waves" in bright avocado greens, yellows and oranges.



### **'80s-'90s**

The '80s ushered in post-modern spaces complemented by pastels and greys, ahead of the zen-like soft and subtle colours of the '90s, at which point, bordered flooring, in cool and warm neutrals put together in a casual style led the way.



groovy  
art  
zet  
art



## '00s-'10s

Welcome to the 2000s, when large chevrons were the pattern du jour. Natural fibres such as jute-inspired flooring and grey and espresso wood floors were here in a big way.

Into the 2010s and brighter, bold accents made statements. And buffalo plaids, a Mid-Century Modern revival, wider floor planks and modern farmhouse styles were all having a moment.



**Today, as the desire for injecting residential design cues into shared spaces emerges, we're seeing the use of cosy materials; to create warm and inviting environments. And the combination of rugs with hard flooring is becoming more popular, not only for acoustic properties but also to define spaces; and as pure design accents.**

“Today's trends feature nostalgia - it seems the perfect time to reflect on the work of the best in history. The result, is Past Forward.”

**David Oakey**  
Designer of Past Forward

In the past, these iconic designs could not be made into carpet tiles. However, thanks to advancements made in manufacturing, historic patterns reminiscent of woven broadloom have been given a contemporary update, with all the performance benefits of modular flooring.



INTERFACE DESIGNS OF THE PAST.



### Bringing the Past Forward



Past Forward fuses retro colours and intricate patterns with today's technology to create a collection of nostalgic designs that perform to the demanding standards of today's commercial spaces.

## Create a moment within a space



The Past Forward collection has been designed as an innovative area rug solution; to be used expressively as a stylish accent to larger floorplates. Each product helps to define purposeful and comfortable spaces with a timeless style. Whether you want to create a cosy corner that provides a feeling of home, add structure to a space with the use of borders, or add wayfinding to an open-plan room, the collection gives you the opportunity to get creative and make a statement.



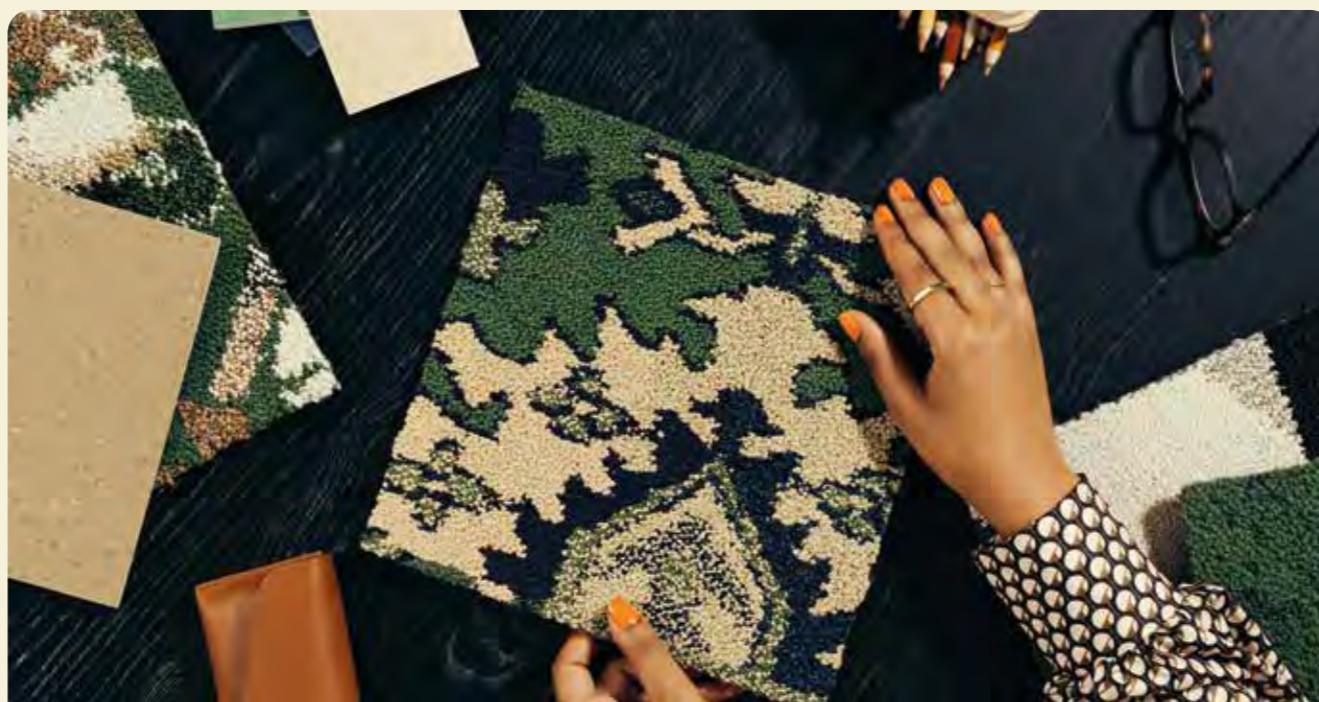






# Unique

With unique combinations that can be mixed and matched to suit, versatility is at the core of this collection. The expansive range of products features both monolithic and non-directional installation, and can be used in any configuration, providing a contemporary take on heritage patterns. Use one product at a time as a defined accent, or incorporate clashing patterns by using more than one at once.



# combinations

## Made to complement



With a choice of 14 dynamic products that work seamlessly with our integrated flooring systems, Past Forward has the flexibility to complement our more subtle carpet tiles with neutrals, nora® rubber flooring and our LVT styles.



**CARPET PRODUCT UNSPOOLED COLOUR OYSTER INSTALLED MONOLITHIC**  
**LVT PRODUCT NORTHERN GRAIN COLOUR BARE OAK INSTALLED ASHLAR**



**CARPET PRODUCT DECADES COLOUR EBONY INSTALLED MONOLITHIC**  
**nora® RUBBER FLOORING NORAMENT 926 CASTELLO COLOUR 5356**

While Past Forward has been designed to work harmoniously with all Interface integrated flooring systems, we've made some pairing recommendations of our own to inspire your projects.

For example, opposite the organic forms and neutral colours of Unspooled complement the texture and tone of Northern Grain LVT.

On the left, pairing the theatrical design of Decades with the simplicity of norament® Castello creates an impactful accent.

Below, the warm tones and domestic feeling of Retrospec alongside the neutrality of Open Air 402, helps to clearly define areas within the space.



**PRODUCT RETROSPEC COLOUR OLIVE INSTALLED NON DIRECTIONAL**  
**PRODUCT OPEN AIR 402 COLOUR NATURAL INSTALLED ASHLAR**



## Patterns of the past, constructed for the future

Interface advocates for design that has a positive impact on people, spaces, and the environment, which is why Past Forward – like all of our products – is constructed with the future in mind.

As part of our Carbon Neutral Floors™ program, the Past Forward collection uses manufacturing processes, recycled content and other materials that deliver a low carbon footprint.



# Curating the classics



# Vintage style, remastered for modern interiors

Past Forward is our largest collection to date, featuring an array of 14 dynamic products, inspired by traditional, vintage, and retro designs.

The more traditional products in the collection draw inspiration from the mastery of Middle Eastern textile craftsmanship. With striking visual motifs and impactful colourways, these designs fuse heritage with contemporary aesthetics to make a bold statement.

More muted in tone, the vintage designs marry organic worn textures with the ornate stylings of the Rococo, Art Nouveau, and the Arts & Craft movements, some of which have been constructed with a beautiful metallic yarn.

Taking inspiration from classic Mid-Century design, our range of retro products features bold geometric shapes and softer vintage swirls in a range of complementary colourways.

Past Forward uses a nostalgic palette of colours, tones, and metallic finishes, offering a counterpoint to more contemporary colours and materials of modern commercial interior spaces — reappropriating the designs for today.

Products can be laid using a non directional or monolithic installation method depending on the style, offering an extensive range of possible layouts.

**Antiquities**



**Arley**



**Reeling**



**Retrospec**



**Yesterdays**



**Archival**



**Cheshire Street**



**Decades**



**Fortnight**



**Rekindled**



**Circa Then**



**Newstalgia**



**Unwound**



**Unspooled**





CARPET PRODUCT ANTIQUITIES COLOUR AMBER INSTALLED NON DIRECTIONAL  
LVT PRODUCT LEVEL SET TEXTURED WOODGRAINS COLOUR RUSTIC OAK INSTALLED ASHLAR

# Antiquities

Antiquities exudes the mastery of Turkish, Wilton, and Renaissance textile craftsmanship, making a bold statement with impactful colourways.

## Colour range



9961001 CRIMSON



9961002 JADE



9961003 CORAL

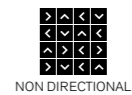


9961004 AMBER

## Specifications

<b>Backing</b>	CQuest™Bio
<b>Product Definition</b>	Tapestry Tufted Patterned Structured Loop Pile
<b>Pile Material</b>	100% Recycled Solution Dyed Nylon
<b>Pile Yarn Weight</b>	949 g/m <sup>2</sup> ± 5%
<b>Pile Height</b>	3.7 mm + 15% / - 10%
<b>Total Thickness</b>	8.7 mm ± 0.5 mm
<b>Wear Classification</b>	Heavy Contract (EN 1307) Class 33 / LC2
<b>Radiant Panel</b>	(EN ISO 9239-1) Euroclass Bfl s1 (EN 13501-1)
<b>Castor Chair</b>	≥ 2.4 (EN 985)
<b>Impact Sound Insulation (ΔL<sub>w</sub>)</b>	26 dB (EN ISO 10140-3)
<b>Sound Absorption</b>	α <sub>w</sub> 0.20 (EN ISO 11654)
<b>Indoor Air Quality</b>	GUT PRODIS - PENDING
<b>Packaging</b>	3 m <sup>2</sup>
<b>Carbon Footprint (Cradle to Gate)</b>	3.74 kg CO <sub>2</sub> eq. /m <sup>2</sup>

## Installation method



NON DIRECTIONAL

View the full product specification on [interface.com](https://www.interface.com)



**BROWSE IMAGES**  
**ORDER SAMPLES**



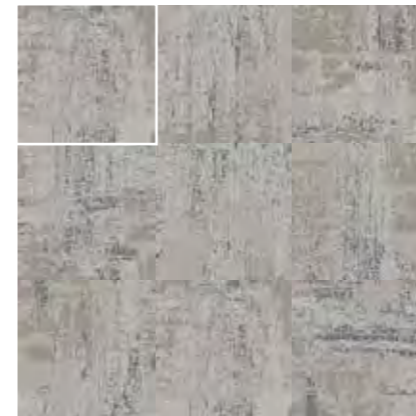


CARPET PRODUCT ARCHIVAL COLOUR FROST INSTALLED MONOLITHIC  
LVT PRODUCT NORTHERN GRAIN COLOUR GLAZED OAK INSTALLED ASHLAR

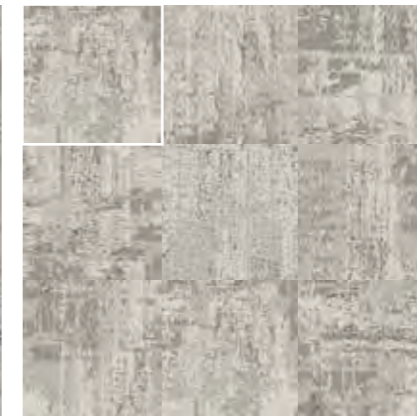
# Archival

With an organic worn appearance, Archival features subtle metallic accents that add a touch of refined elegance.

## Colour range



9949001 FROST



9949002 PEARL



9949003 LINEN



9949004 PARCHMENT

## Specifications

<b>Backing</b>	CQuest™ Bio
<b>Product Definition</b>	Tapestry Tufted Patterned Structured Loop Pile
<b>Pile Material</b>	100% Recycled Solution Dyed Nylon
<b>Pile Yarn Weight</b>	1323 g/m <sup>2</sup> ± 5%
<b>Pile Height</b>	5.3 mm + 15% / - 10%
<b>Total Thickness</b>	10.2 mm ± 0.5 mm
<b>Wear Classification</b>	Heavy Contract (EN 1307) Class 33 / LC4
<b>Radiant Panel</b>	(EN ISO 9239-1) Euroclass Bfl s1 (EN 13501-1)
<b>Castor Chair</b>	≥ 2.4 (EN 985)
<b>Impact Sound Insulation (ΔL<sub>w</sub>)</b>	27 dB (EN ISO 10140-3)
<b>Sound Absorption</b>	α <sub>w</sub> 0.20 (EN ISO 11654)
<b>Indoor Air Quality</b>	GUT PRODIS - PENDING
<b>Packaging</b>	3 m <sup>2</sup>
<b>Carbon Footprint (Cradle to Gate)</b>	4.89 kg CO <sub>2</sub> eq./m <sup>2</sup>

## Installation method



MONOLITHIC

View the full product specification  
on [interface.com](https://interface.com)



**BROWSE IMAGES**  
**ORDER SAMPLES**



CARPET PRODUCT ARLEY COLOUR WALNUT INSTALLED NON DIRECTIONAL  
LVT PRODUCT NORTHERN GRAIN COLOUR ANTIQUE WASH INSTALLED ASHLAR

# Arley

Arley reworks the intricate details of traditional Herati patterns as large-scale motifs, fusing heritage and contemporary aesthetics.

## Colour range



9959001 AZURE



9959002 BASIL



9959003 LICHEN



9959004 WALNUT

## Specifications

<b>Backing</b>	CQuest™ Bio
<b>Product Definition</b>	Tapestry Tufted Patterned Structured Loop Pile
<b>Pile Material</b>	100% Recycled Solution Dyed Nylon
<b>Pile Yarn Weight</b>	949 g/m <sup>2</sup> ± 5%
<b>Pile Height</b>	3.5 mm + 15% / - 10%
<b>Total Thickness</b>	8.6 mm ± 0.5 mm
<b>Wear Classification</b>	Heavy Contract (EN 1307) Class 33 / LC2
<b>Radiant Panel</b>	(EN ISO 9239-1) Euroclass Bfl s1 (EN 13501-1)
<b>Castor Chair</b>	≥ 2.4 (EN 985)
<b>Impact Sound Insulation (ΔL<sub>w</sub>)</b>	26 dB (EN ISO 10140-3)
<b>Sound Absorption</b>	α <sub>w</sub> 0.20 (EN ISO 11654)
<b>Indoor Air Quality</b>	GUT PRODIS - PENDING
<b>Packaging</b>	3 m <sup>2</sup>
<b>Carbon Footprint (Cradle to Gate)</b>	3.74 kg CO <sub>2</sub> eq. /m <sup>2</sup>

### Installation method



NON DIRECTIONAL

View the full product specification on [interface.com](https://interface.com)



**BROWSE IMAGES**  
**ORDER SAMPLES**

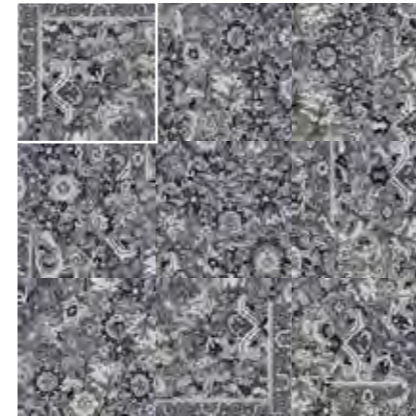


PRODUCT CHESHIRE STREET COLOUR COBALT INSTALLED NON DIRECTIONAL

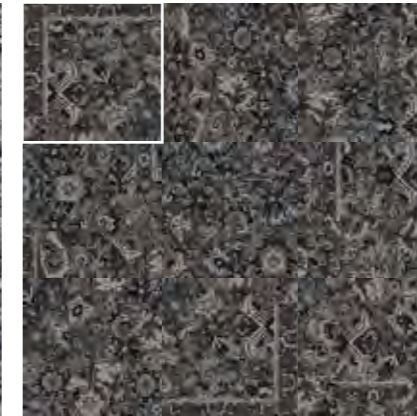
# Cheshire Street

Cheshire Street features ornate, small, floral motifs, inspired by the 20th-century interpretations of Art Nouveau and Arts and Crafts.

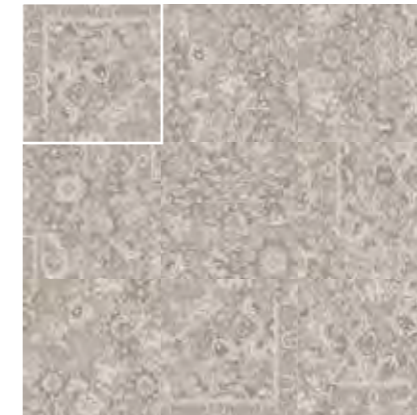
## Colour range



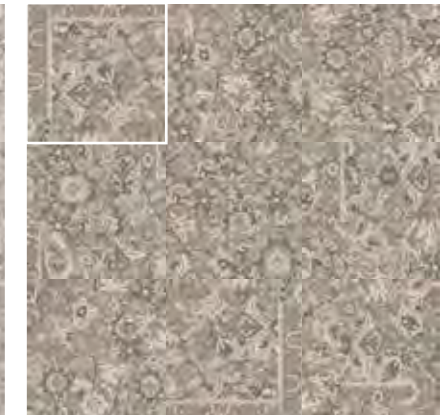
9955001 COBALT



9955002 MIDNIGHT



9955003 TAUPE



9955004 DUNE

## Specifications

<b>Backing</b>	CQuest™Bio
<b>Product Definition</b>	Tapestry Tufted Patterned Structured Loop Pile
<b>Pile Material</b>	100% Recycled Solution Dyed Nylon
<b>Pile Yarn Weight</b>	1017 g/m <sup>2</sup> ± 5%
<b>Pile Height</b>	3.1 mm + 15% / - 10%
<b>Total Thickness</b>	8.0 mm ± 0.5 mm
<b>Wear Classification</b>	Heavy Contract (EN 1307) Class 33 / LC2
<b>Radiant Panel</b>	(EN ISO 9239-1) Euroclass Bfl s1 (EN 13501-1)
<b>Castor Chair</b>	≥ 2.4 (EN 985)
<b>Impact Sound Insulation (ΔL<sub>w</sub>)</b>	25 dB (EN ISO 10140-3)
<b>Sound Absorption</b>	α <sub>w</sub> 0.20 (EN ISO 11654)
<b>Indoor Air Quality</b>	GUT PRODIS - PENDING
<b>Packaging</b>	3 m <sup>2</sup>
<b>Carbon Footprint (Cradle to Gate)</b>	3.95 kg CO <sub>2</sub> eq. /m <sup>2</sup>

## Installation method



MONOLITHIC



NON DIRECTIONAL

View the full product specification on [interface.com](https://www.interface.com)



**BROWSE IMAGES**  
**ORDER SAMPLES**

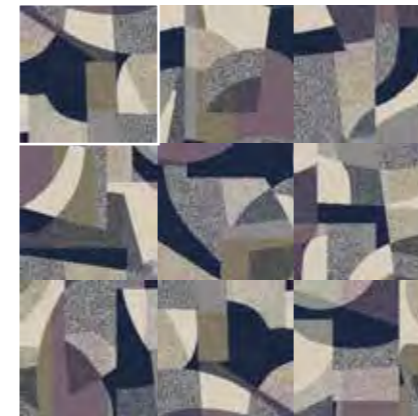


PRODUCT CIRCA THEN COLOUR CLAY INSTALLED NON DIRECTIONAL

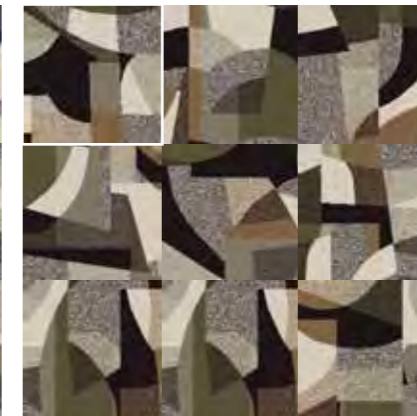
# Circa Then

Inspired by Mid-Century design, Circa Then features large-scale overlapping geometric forms to create a bold retro impression.

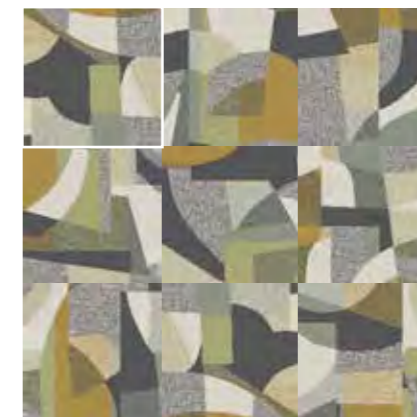
## Colour range



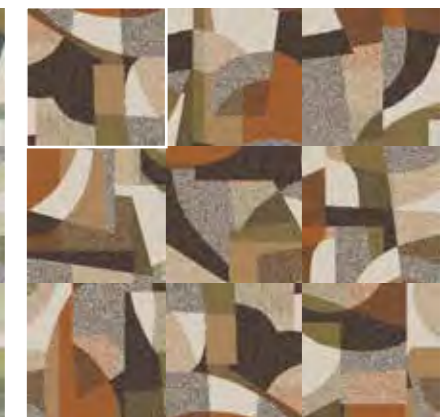
9957001 HARBOUR



9957002 FOREST



9957003 FERN



9957004 CLAY

## Specifications

<b>Backing</b>	CQuest™ Bio
<b>Product Definition</b>	Tapestry Tufted Patterned Structured Loop Pile
<b>Pile Material</b>	100% Recycled Solution Dyed Nylon
<b>Pile Yarn Weight</b>	949 g/m <sup>2</sup> ± 5%
<b>Pile Height</b>	4.0 mm + 15% / - 10%
<b>Total Thickness</b>	8.6 mm ± 0.5 mm
<b>Wear Classification</b>	Heavy Contract (EN 1307) Class 33 / LC2
<b>Radiant Panel</b>	(EN ISO 9239-1) Euroclass Bfl s1 (EN 13501-1)
<b>Castor Chair</b>	≥ 2.4 (EN 985)
<b>Impact Sound Insulation (ΔL<sub>i</sub>)</b>	26 dB (EN ISO 10140-3)
<b>Sound Absorption</b>	α <sub>w</sub> 0.20 (EN ISO 11654)
<b>Indoor Air Quality</b>	GUT PRODIS - PENDING
<b>Packaging</b>	3 m <sup>2</sup>
<b>Carbon Footprint (Cradle to Gate)</b>	3.74 kg CO <sub>2</sub> eq. /m <sup>2</sup>

## Installation method



NON DIRECTIONAL

View the full product specification on [interface.com](https://interface.com)



**BROWSE IMAGES**  
**ORDER SAMPLES**



PRODUCT DECADES COLOUR EBONY INSTALLED MONOLITHIC

# Decades

Influenced by the decorative and ornate impressions of the Rococo style, Decades feels elegantly theatrical using a metallic yarn.

## Colour range



9950001 DENIM



9950002 EBONY



9950003 SLATE



9950004 MOCHA

## Specifications

<b>Backing</b>	CQuest™Bio
<b>Product Definition</b>	Tapestry Tufted Patterned Structured Loop Pile
<b>Pile Material</b>	100% Recycled Solution Dyed Nylon
<b>Pile Yarn Weight</b>	1220 g/m <sup>2</sup> ± 5%
<b>Pile Height</b>	5.0 mm + 15% / - 10%
<b>Total Thickness</b>	10.1 mm ± 0.5 mm
<b>Wear Classification</b>	Heavy Contract (EN 1307) Class 33 / LC3
<b>Radiant Panel</b>	(EN ISO 9239-1) Euroclass Bfl s1 (EN 13501-1)
<b>Castor Chair</b>	≥ 2.4 (EN 985)
<b>Impact Sound Insulation (ΔL<sub>w</sub>)</b>	28 dB (EN ISO 10140-3)
<b>Sound Absorption</b>	α <sub>w</sub> 0.20 (EN ISO 11654)
<b>Indoor Air Quality</b>	GUT PRODIS - PENDING
<b>Packaging</b>	3 m <sup>2</sup>
<b>Carbon Footprint (Cradle to Gate)</b>	4.58 kg CO <sub>2</sub> eq./m <sup>2</sup>

## Installation method



MONOLITHIC

View the full product specification on [interface.com](https://interface.com)



**BROWSE IMAGES**  
**ORDER SAMPLES**



PRODUCT FORTNIGHT COLOUR NATURAL INSTALLED NON DIRECTIONAL

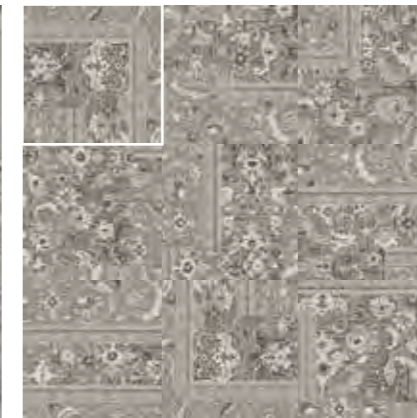
# Fortnight

Fortnight exudes opulence through its ornate Renaissance styling, enhanced with luxurious metallic yarn.

## Colour range



9951001 FOG



9951002 BONE



9951003 DOVE



9951004 NATURAL

## Specifications

<b>Backing</b>	CQuest™Bio
<b>Product Definition</b>	Tapestry Tufted Patterned Structured Loop Pile
<b>Pile Material</b>	100% Recycled Solution Dyed Nylon
<b>Pile Yarn Weight</b>	1220 g/m <sup>2</sup> ± 5%
<b>Pile Height</b>	3.7 mm + 15% / - 10%
<b>Total Thickness</b>	8.7 mm ± 0.5 mm
<b>Wear Classification</b>	Heavy Contract (EN 1307) Class 33 / LC3
<b>Radiant Panel</b>	(EN ISO 9239-1) Euroclass Bfl s1 (EN 13501-1)
<b>Castor Chair</b>	≥ 2.4 (EN 985)
<b>Impact Sound Insulation (ΔL<sub>i</sub>)</b>	28 dB (EN ISO 10140-3)
<b>Sound Absorption</b>	α <sub>w</sub> 0.20 (EN ISO 11654)
<b>Indoor Air Quality</b>	GUT PRODIS - PENDING
<b>Packaging</b>	3 m <sup>2</sup>
<b>Carbon Footprint (Cradle to Gate)</b>	4.58 kg CO <sub>2</sub> eq./m <sup>2</sup>

## Installation method



MONOLITHIC



NON DIRECTIONAL

View the full product specification on [interface.com](https://interface.com)



**BROWSE IMAGES**  
**ORDER SAMPLES**

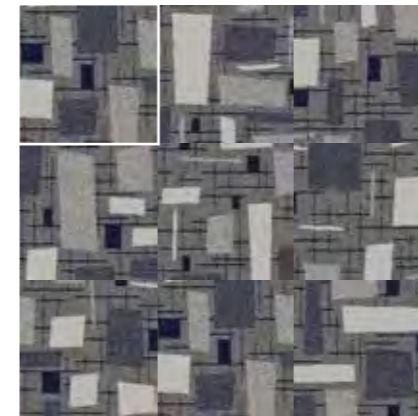


PRODUCT NEWSTALGIA COLOUR WHEAT INSTALLED MONOLITHIC

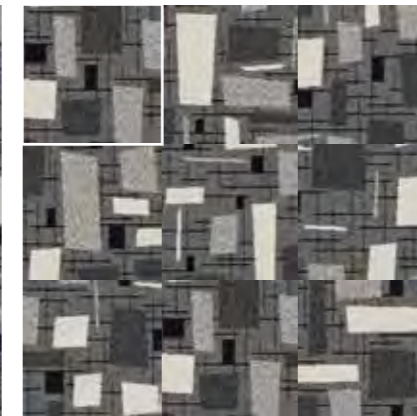
# Newstalgia

Newstalgia captures a distinct retro vibe with its tonal block and criss-cross design.

## Colour range



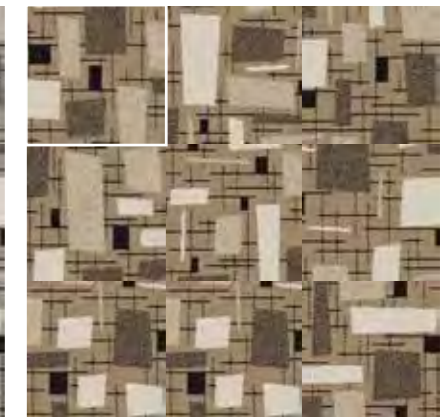
9954001 INDIGO



9954002 FLINT



9954003 FOSSIL



9954004 WHEAT

## Specifications

<b>Backing</b>	CQuest™Bio
<b>Product Definition</b>	Tapestry Tufted Patterned Structured Loop Pile
<b>Pile Material</b>	100% Recycled Solution Dyed Nylon
<b>Pile Yarn Weight</b>	916 g/m <sup>2</sup> ± 5%
<b>Pile Height</b>	3.8 mm + 15% / - 10%
<b>Total Thickness</b>	8.7 mm ± 0.5 mm
<b>Wear Classification</b>	Heavy Contract (EN 1307) Class 33 / LC2
<b>Radiant Panel</b>	(EN ISO 9239-1) Euroclass Bfl s1 (EN 13501-1)
<b>Castor Chair</b>	≥ 2.4 (EN 985)
<b>Impact Sound Insulation (ΔL<sub>i</sub>)</b>	25 dB (EN ISO 10140-3)
<b>Sound Absorption</b>	α <sub>w</sub> 0.20 (EN ISO 11654)
<b>Indoor Air Quality</b>	GUT PRODIS - PENDING
<b>Packaging</b>	3 m <sup>2</sup>
<b>Carbon Footprint (Cradle to Gate)</b>	3.64 kg CO <sub>2</sub> eq./m <sup>2</sup>

## Installation method



MONOLITHIC

View the full product specification on [interface.com](https://interface.com)



**BROWSE IMAGES**  
**ORDER SAMPLES**



CARPET PRODUCT REELING COLOUR SAPPHIRE  
LVT PRODUCT LEVEL SET TEXTURED STONES COLOUR COOL POLISHED CEMENT INSTALLED NON DIRECTIONAL

# Reeling

A reinterpretation of traditional, geometric Turkish textiles, Reeling makes a dynamic impression with its contrasting tones and bold shapes.

## Colour range



9962001 SAPPHIRE



9962002 PEBBLE



9962003 AVOCADO



9962004 SPICE

## Specifications

<b>Backing</b>	CQuest™ Bio
<b>Product Definition</b>	Tapestry Tufted Patterned Structured Loop Pile
<b>Pile Material</b>	100% Recycled Solution Dyed Nylon
<b>Pile Yarn Weight</b>	882 g/m <sup>2</sup> ± 5%
<b>Pile Height</b>	3.6 mm + 15% / - 10%
<b>Total Thickness</b>	8.4 mm ± 0.5 mm
<b>Wear Classification</b>	Heavy Contract (EN 1307) Class 33 / LC2
<b>Radiant Panel</b>	(EN ISO 9239-1) Euroclass Bfl s1 (EN 13501-1)
<b>Castor Chair</b>	≥ 2.4 (EN 985)
<b>Impact Sound Insulation (ΔL<sub>w</sub>)</b>	26 dB (EN ISO 10140-3)
<b>Sound Absorption</b>	α <sub>w</sub> 0.20 (EN ISO 11654)
<b>Indoor Air Quality</b>	GUT PRODIS - PENDING
<b>Packaging</b>	3 m <sup>2</sup>
<b>Carbon Footprint (Cradle to Gate)</b>	3.53 kg CO <sub>2</sub> eq. /m <sup>2</sup>

## Installation method



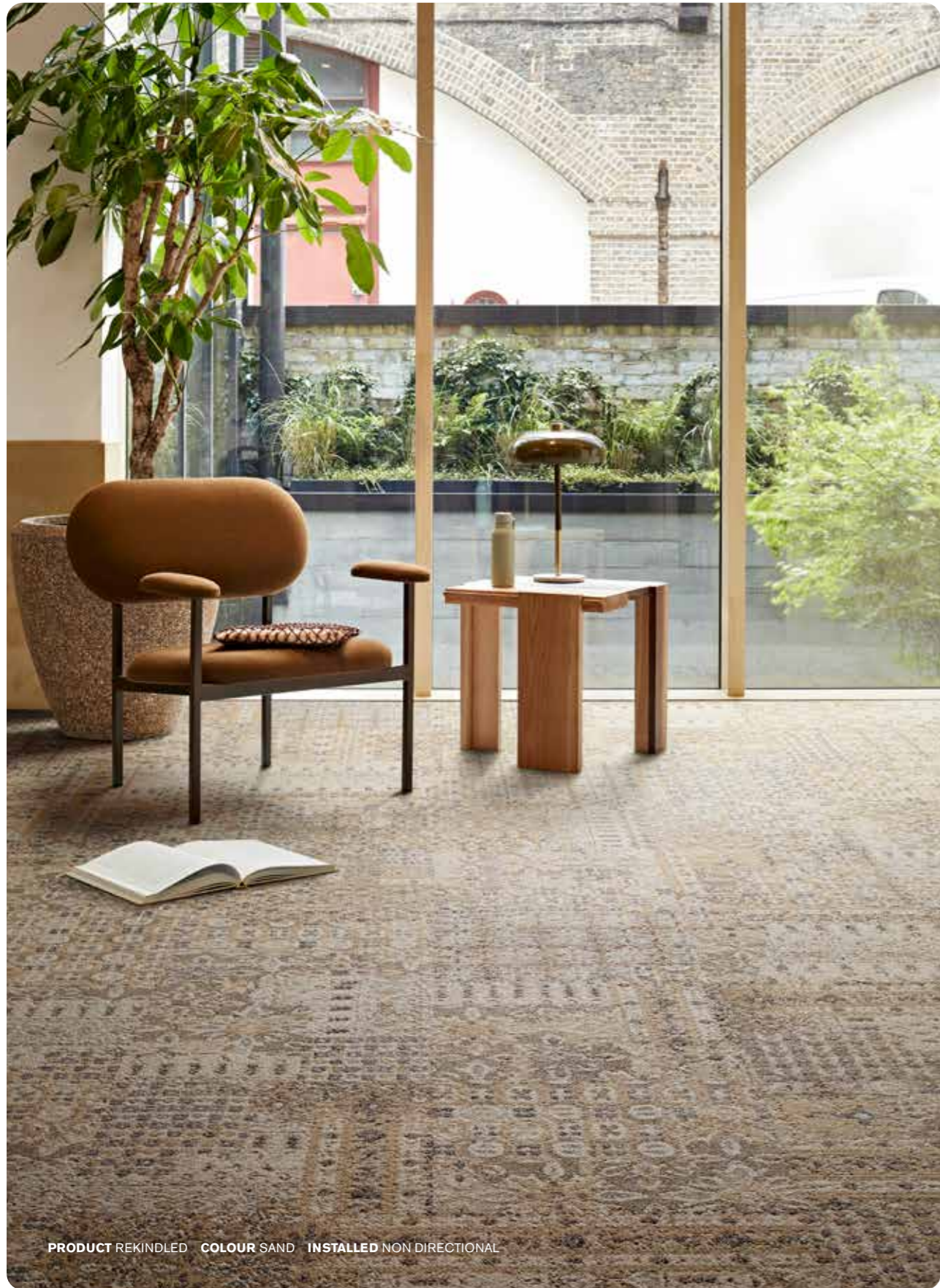
NON DIRECTIONAL

View the full product specification  
on [interface.com](https://interface.com)



**BROWSE IMAGES**  
**ORDER SAMPLES**





PRODUCT REKINDLED COLOUR SAND INSTALLED NON DIRECTIONAL

# Rekindled

Rekindled feels subtly worn and aged with its calm and neutral vintage patchwork design.

## Colour range



9956001 STEEL



9956002 SAGE



9956003 ASH



9956004 SAND

## Specifications

View the full product specification on [interface.com](https://interface.com)

<b>Backing</b>	CQuest™Bio
<b>Product Definition</b>	Tapestry Tufted Patterned Structured Loop Pile
<b>Pile Material</b>	100% Recycled Solution Dyed Nylon
<b>Pile Yarn Weight</b>	1153 g/m <sup>2</sup> ± 5%
<b>Pile Height</b>	4.6 mm + 15% / - 10%
<b>Total Thickness</b>	9.1 mm ± 0.5 mm
<b>Wear Classification</b>	Heavy Contract (EN 1307) Class 33 / LC3
<b>Radiant Panel</b>	(EN ISO 9239-1) Euroclass Bfl s1 (EN 13501-1)
<b>Castor Chair</b>	≥ 2.4 (EN 985)
<b>Impact Sound Insulation (ΔL<sub>w</sub>)</b>	28 dB (EN ISO 10140-3)
<b>Sound Absorption</b>	α <sub>w</sub> 0.20 (EN ISO 11654)
<b>Indoor Air Quality</b>	GUT PRODIS - PENDING
<b>Packaging</b>	3 m <sup>2</sup>
<b>Carbon Footprint (Cradle to Gate)</b>	4.37 kg CO <sub>2</sub> eq./m <sup>2</sup>

### Installation method



NON DIRECTIONAL



**BROWSE IMAGES**  
**ORDER SAMPLES**



PRODUCT RETROSPEC COLOUR OLIVE INSTALLED NON DIRECTIONAL  
 PRODUCT OPEN AIR 402 COLOUR NATURAL INSTALLED ASHLAR

# Retrospec

Bright, bold and geometric, Retrospec creates an impression of the traditional kilim designs of the Middle East.

## Colour range



9958001 ROYAL



9958002 OLIVE



9958003 EMERALD



9958004 TERRACOTTA

## Specifications

<b>Backing</b>	CQuest™ Bio
<b>Product Definition</b>	Tapestry Tufted Patterned Structured Loop Pile
<b>Pile Material</b>	100% Recycled Solution Dyed Nylon
<b>Pile Yarn Weight</b>	916 g/m <sup>2</sup> ± 5%
<b>Pile Height</b>	3.9 mm + 15% / - 10%
<b>Total Thickness</b>	8.5 mm ± 0.5 mm
<b>Wear Classification</b>	Heavy Contract (EN 1307) Class 33 / LC2
<b>Radiant Panel</b>	(EN ISO 9239-1) Euroclass Bfl s1 (EN 13501-1)
<b>Castor Chair</b>	≥ 2.4 (EN 985)
<b>Impact Sound Insulation (ΔL<sub>i</sub>)</b>	25 dB (EN ISO 10140-3)
<b>Sound Absorption</b>	α <sub>w</sub> 0.20 (EN ISO 11654)
<b>Indoor Air Quality</b>	GUT PRODIS - PENDING
<b>Packaging</b>	3 m <sup>2</sup>
<b>Carbon Footprint (Cradle to Gate)</b>	3.64 kg CO <sub>2</sub> eq./m <sup>2</sup>

## Installation method



NON DIRECTIONAL

View the full product specification  
on [interface.com](https://www.interface.com)



**BROWSE IMAGES**  
**ORDER SAMPLES**

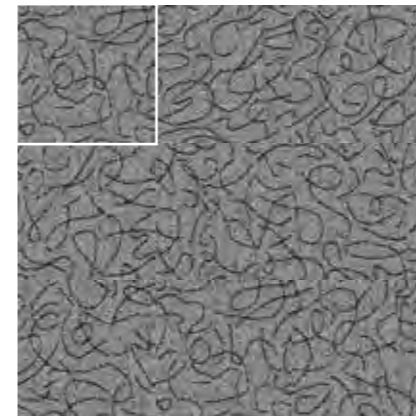


PRODUCT UNSPOOLED COLOUR GRAPHITE INSTALLED MONOLITHIC

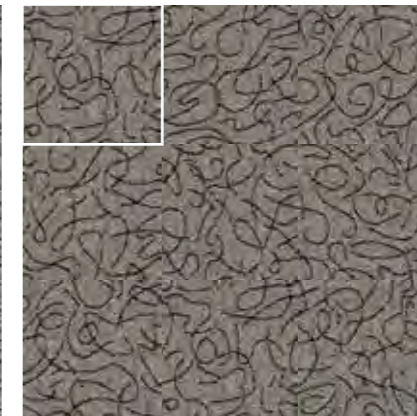
# Unspooled

Unspooled draws inspiration from the naive visual motifs of the late 20th-Century, boasting an organic scribble design.

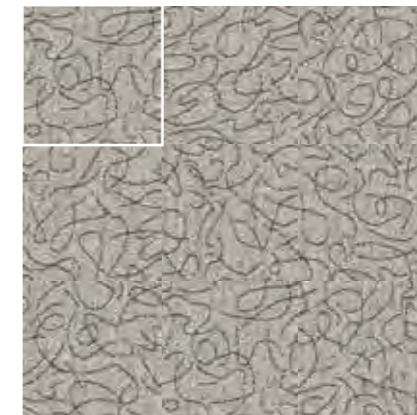
## Colour range



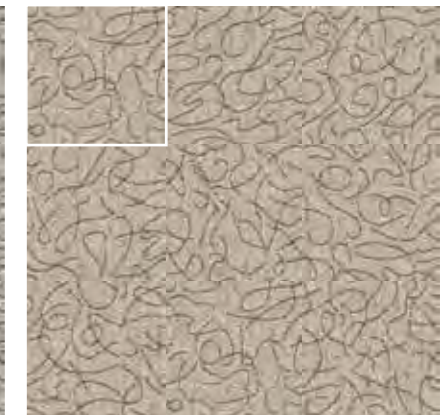
9953001 PEWTER



9953002 GRAPHITE



9953003 OYSTER



9953004 OATMEAL

## Specifications

<b>Backing</b>	CQuest™Bio
<b>Product Definition</b>	Tapestry Tufted Patterned Structured Loop Pile
<b>Pile Material</b>	100% Recycled Solution Dyed Nylon
<b>Pile Yarn Weight</b>	1119 g/m <sup>2</sup> ± 5%
<b>Pile Height</b>	4.8 mm + 15% / - 10%
<b>Total Thickness</b>	9.5 mm ± 0.5 mm
<b>Wear Classification</b>	Heavy Contract (EN 1307) Class 33 / LC3
<b>Radiant Panel</b>	(EN ISO 9239-1) Euroclass Bfl s1 (EN 13501-1)
<b>Castor Chair</b>	≥ 2.4 (EN 985)
<b>Impact Sound Insulation (ΔL<sub>i</sub>)</b>	28 dB (EN ISO 10140-3)
<b>Sound Absorption</b>	α <sub>w</sub> 0.20 (EN ISO 11654)
<b>Indoor Air Quality</b>	GUT PRODIS - PENDING
<b>Packaging</b>	3 m <sup>2</sup>
<b>Carbon Footprint (Cradle to Gate)</b>	4.27 kg CO <sub>2</sub> eq./m <sup>2</sup>

## Installation method



MONOLITHIC

View the full product specification on [interface.com](https://interface.com)



**BROWSE IMAGES**  
**ORDER SAMPLES**

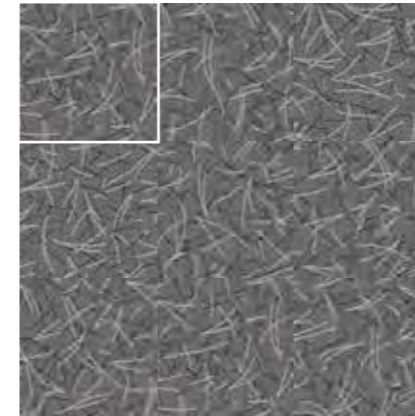


PRODUCT UNWOUND COLOUR CAMEL INSTALLED MONOLITHIC  
 PRODUCT CONNECTED ETHOS CE100 COLOUR CONSIDER INSTALLED NON DIRECTIONAL

# Unwound

Playfully elegant, Unwound features an illustrative fallen pine needle design in neutral tones.

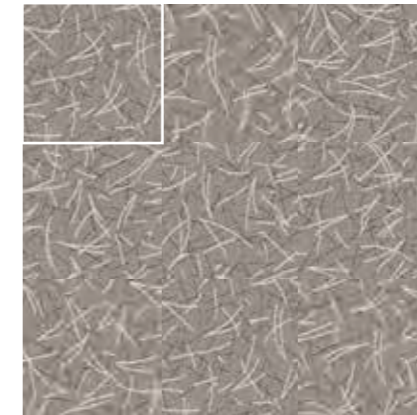
## Colour range



9952001 TWILIGHT



9952002 CARBON



9952003 NICKEL



9952004 CAMEL

## Specifications

<b>Backing</b>	CQuest™Bio
<b>Product Definition</b>	Tapestry Tufted Patterned Structured Loop Pile
<b>Pile Material</b>	100% Recycled Solution Dyed Nylon
<b>Pile Yarn Weight</b>	848 g/m <sup>2</sup> ± 5%
<b>Pile Height</b>	4.4 mm + 15% / - 10%
<b>Total Thickness</b>	9.0 mm ± 0.5 mm
<b>Wear Classification</b>	Heavy Contract (EN 1307) Class 33 / LC2
<b>Radiant Panel</b>	(EN ISO 9239-1) Euroclass Bfl s1 (EN 13501-1)
<b>Castor Chair</b>	≥ 2.4 (EN 985)
<b>Impact Sound Insulation (ΔL<sub>w</sub>)</b>	25 dB (EN ISO 10140-3)
<b>Sound Absorption</b>	α <sub>w</sub> 0.20 (EN ISO 11654)
<b>Indoor Air Quality</b>	GUT PRODIS - PENDING
<b>Packaging</b>	3 m <sup>2</sup>
<b>Carbon Footprint (Cradle to Gate)</b>	3.43 kg CO <sub>2</sub> eq. /m <sup>2</sup>

### Installation method



MONOLITHIC

View the full product specification  
on [interface.com](https://www.interface.com)



**BROWSE IMAGES**  
**ORDER SAMPLES**

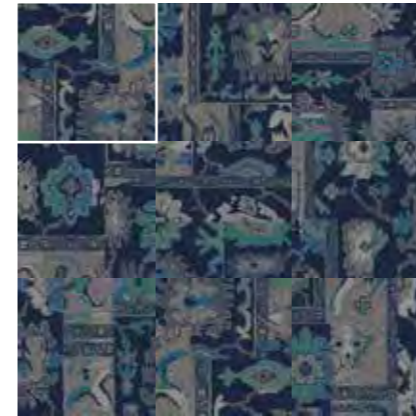


PRODUCT YESTERDAYS COLOUR FLANNEL INSTALLED NON DIRECTIONAL

# Yesterdays

Inspired by traditional Turkish rugs, Yesterdays uses unexpected colour combinations to create a contemporary impression.

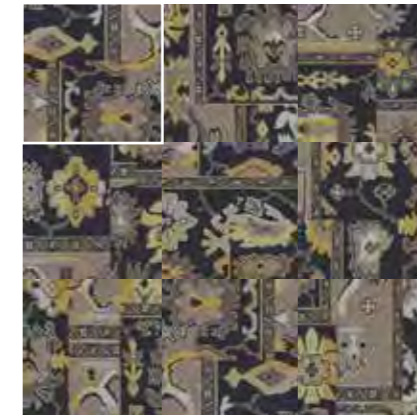
## Colour range



9960001 PRUSSIAN



9960002 ONYX



9960003 FLANNEL

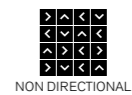


9960004 BRONZE

## Specifications

<b>Backing</b>	CQuest™ Bio
<b>Product Definition</b>	Tapestry Tufted Patterned Structured Loop Pile
<b>Pile Material</b>	100% Recycled Solution Dyed Nylon
<b>Pile Yarn Weight</b>	848 g/m <sup>2</sup> ± 5%
<b>Pile Height</b>	3.6 mm + 15% / - 10%
<b>Total Thickness</b>	8.2 mm ± 0.5 mm
<b>Wear Classification</b>	Heavy Contract (EN 1307) Class 33 / LC2
<b>Radiant Panel</b>	(EN ISO 9239-1) Euroclass Bfl s1 (EN 13501-1)
<b>Castor Chair</b>	≥ 2.4 (EN 985)
<b>Impact Sound Insulation (ΔL<sub>w</sub>)</b>	25 dB (EN ISO 10140-3)
<b>Sound Absorption</b>	α <sub>w</sub> 0.20 (EN ISO 11654)
<b>Indoor Air Quality</b>	GUT PRODIS - PENDING
<b>Packaging</b>	3 m <sup>2</sup>
<b>Carbon Footprint (Cradle to Gate)</b>	3.43 kg CO <sub>2</sub> eq./m <sup>2</sup>

## Installation method



NON DIRECTIONAL

View the full product specification on [interface.com](https://interface.com)



**BROWSE IMAGES**  
**ORDER SAMPLES**

# Get in touch

## Europe, Middle East & Africa

AE	+971 44508175
AT	+43 1 8102839
BA	+387 33 522 534
BE	+32 2 475 27 27
BG	+359 2 808 303
BY	+375 17 226 75 14
CH	+41 44 913 68 00
CZ	+42 0 233 087 111
DE	+49 2151 3718 0
DK	+45 33 79 70 55
EE	+372 6518 313
ES	+34 932 418 750
EG	+(202) 3760 7818
FR	+33 1 58 10 20 20
GR	+30 211 2120820
HR	+385 14 62 30 63
HU	+36 1 349 6545
IE	+353 1 679 8466
IL	+972 97403034
IT	+39 02 890 93678
KZ	+7 701 391 88 13
LT	+370 37 337332
LV	+371 672 18 744
NL	+31 33 277 5555
ME	+381 11 414 92 00
MK	+389 2 323 01 89
NO	+47 23 12 01 70
PL	+48 22 862 48 40
PT	+351 217 122 740
RO	+40 21 317 12 40/42/43/44
RS	+381 11 414 92 00
SA	+966 554622263
SE	+468 241 230
SK	+421 911 104 073
SI	+386 8 205 4007
TR	+90 212 248 97 77
UA	+38(044)238 27 67
UK	+44 (0)800 3134465
ZA	+27 11 608 4270



