

Interface®



Past Forward.™

**Remastered,
reimagined
and remade.**





**Introducing
Past Forward; a modern
carpet collection from
Interface[®], inspired by
decades of innovation
and iconic designs.**

1973

1973 — the year Interface founder, Ray Anderson first introduced carpet tile to the America's, after discovering it during a European trip. Together with his team, Ray led the innovative charge, developing the Interface carpet tile of the future.



THE EARLY DAYS OF INTERFACE

While at the time, these tiles had limited design capabilities, Ray imagined their usage within the new open office. Recognising their performance potential to reduce noise levels and create a softened ambience in shared spaces, he seized the opportunity to reinvent the modular tile and revolutionize commercial interior design.



RAY ANDERSON, 1973.

Born and raised in Kidderminster, England, the designer of our Past Forward Collection, David Oakey was honing his craft, just some streets away from where Ray Anderson first masterminded his product. And as if by fate, their paths would continue to cross when David answered a job advertisement in a trade magazine to relocate to the town of LaGrange, Georgia – in the very same year and location where Interface set up its first manufacturing facility.

**WANTED!
ENGLISH CARPET
DESIGNER**

Just as David celebrates fifty years designing carpets in the United States, Interface is celebrating fifty years of design and manufacturing. This shared anniversary inspired a look back through the design trends that have come and gone, as well as contemplating how they might influence interiors of today.



'60s-'70s

From the interiors of the '60s that preceded the carpet tile, we saw traditional, muted hues area rugs to diverse patterns of wall-to-wall broadloom featuring the look of Mid-Century Modern, as well as abstraction, Art Nouveau, Art Deco and English Craft designs in bold bright colours.

In the '70s we saw the continuation of impactful patterns moving towards "groovy waves" in bright avocado greens, yellows and oranges.



'80s-'90s

The '80s ushered in post-modern spaces complemented by pastels and greys, ahead of the zen-like soft and subtle colours of the '90s, at which point, bordered flooring, in cool and warm neutrals put together in a casual style led the way.





'00s-'10s

Welcome to the 2000s, when large chevrons were the pattern du jour. Natural fibres such as jute-inspired flooring and grey and espresso wood floors were here in a big way.

Into the 2010s and brighter, bold accents made statements. And buffalo plaids, a Mid-Century Modern revival, wider floor planks and modern farmhouse styles were all having a moment.



Today, as the desire for injecting residential design cues into shared spaces emerges, we're seeing the use of cosy materials; to create warm and inviting environments. And the combination of rugs with hard flooring is becoming more popular, not only for acoustic properties but also to define spaces; and as pure design accents.

10 “Today’s trends feature
nostalgia - it seems the
perfect time to reflect
on the work of the best
in history. The result,
is Past Forward.”

David Oakey
Designer of Past Forward

11 In the past, these iconic designs could not be made into carpet tiles. However, thanks to advancements made in manufacturing, historic patterns reminiscent of woven broadloom have been given a contemporary update, with all the performance benefits of modular flooring.



INTERFACE DESIGNS OF THE PAST.



Bringing the Past Forward



Past Forward fuses retro colours and intricate patterns with today's technology to create a collection of nostalgic designs that perform to the demanding standards of today's commercial spaces.

Create a moment within a space



The Past Forward collection has been designed as an innovative area rug solution; to be used expressively as a stylish accent to larger floorplates. Each product helps to define purposeful and comfortable spaces with a timeless style. Whether you want to create a cosy corner that provides a feeling of home, add structure to a space with the use of borders, or add wayfinding to an open-plan room, the collection gives you the opportunity to get creative and make a statement.







Unique

With unique combinations that can be mixed and matched to suit, versatility is at the core of this collection. The expansive range of products features both monolithic and non-directional installation, and can be used in any configuration, providing a contemporary take on heritage patterns. Use one product at a time as a defined accent, or incorporate clashing patterns by using more than one at once.



combinations

Made to complement



With a choice of 14 dynamic products that work seamlessly with our integrated flooring systems, Past Forward has the flexibility to complement our more subtle carpet tiles with neutrals, nora[®] rubber flooring and our LVT styles.



CARPET PRODUCT UNSPOOLED **COLOUR** OYSTER **INSTALLED** MONOLITHIC
LVT PRODUCT NORTHERN GRAIN **COLOUR** BARE OAK **INSTALLED** ASHLAR



CARPET PRODUCT DECADES **COLOUR** EBONY **INSTALLED** MONOLITHIC
nora® RUBBER FLOORING NORAMENT 926 CASTELLO **COLOUR** 5356

While Past Forward has been designed to work harmoniously with all Interface integrated flooring systems, we've made some pairing recommendations of our own to inspire your projects.

For example, opposite the organic forms and neutral colours of Unspooled complement the texture and tone of Northern Grain LVT.

On the left, pairing the theatrical design of Decades with the simplicity of nora® Castello creates an impactful accent.

Below, the warm tones and domestic feeling of Retrospec alongside the neutrality of Open Air 402, helps to clearly define areas within the space.



PRODUCT RETROSPEC **COLOUR** OLIVE **INSTALLED** NON DIRECTIONAL
PRODUCT OPEN AIR 402 **COLOUR** NATURAL **INSTALLED** ASHLAR



Patterns of the past, constructed for the future

Interface advocates for design that has a positive impact on people, spaces, and the environment, which is why Past Forward – like all of our products – is constructed with the future in mind.

As part of our Carbon Neutral Floors™ program, the Past Forward collection uses manufacturing processes, recycled content and other materials that deliver a low carbon footprint.





Curating the classics



Vintage style, remastered for modern interiors

Past Forward is our largest collection to date, featuring an array of 14 dynamic products, inspired by traditional, vintage, and retro designs. The more traditional products in the collection draw inspiration from the mastery of Middle Eastern textile craftsmanship. With striking visual motifs and impactful colourways, these designs fuse heritage with contemporary aesthetics to make a bold statement. More muted in tone, the vintage designs marry organic worn textures with the ornate stylings of the Rococo, Art Nouveau, and the Arts & Craft movements, some of which have been constructed with a beautiful metallic yarn.

Taking inspiration from classic Mid-Century design, our range of retro products features bold geometric shapes and softer vintage swirls in a range of complementary colourways. Past Forward uses a nostalgic palette of colours, tones, and metallic finishes, offering a counterpoint to more contemporary colours and materials of modern commercial interior spaces — reappropriating the designs for today. Products can be laid using a non directional or monolithic installation method depending on the style, offering an extensive range of possible layouts.

Antiquities



Arley



Reeling



Retrospec



Yesterdays



Archival



Cheshire Street



Decades



Fortnight



Rekindled



Circa Then



Newstalgia



Unwound



Unspooled





CARPET PRODUCT ANTIQUITIES COLOUR AMBER INSTALLED NON DIRECTIONAL
LVT PRODUCT LEVEL SET TEXTURED WOODGRAINS COLOUR RUSTIC OAK INSTALLED ASHLAR

Antiquities

Antiquities exudes the mastery of Turkish, Wilton, and Renaissance textile craftsmanship, making a bold statement with impactful colourways.

Colour range



9961001 CRIMSON



9961002 JADE



9961003 CORAL



9961004 AMBER

Specifications

Region	Asia	Australia & New Zealand
Style Code	9961	
Product Construction	Tapestry Tufted Patterned Structured Loop Pile	
Yarn System	100% Recycled Solution Dyed Nylon	
Machine Gauge	1/10	
Pile Thickness	4.1mm (± 0.5mm)	4.0mm (± 0.5mm)
Total Thickness	8.3mm (± 0.5mm)	7.8mm (± 0.5mm)
Tile Size	50x50cm	
Area of Use (Asia Only)	Commercial Heavy Use	N/A
ACCS Grading (Australia & New Zealand Only)	N/A	Commercial Extra Heavy Duty
Lifetime Antimicrobial	Intersept®	
Soil/Stain Protection	Protekt2®	

View the full product specification on interface.com

Installation method



NON DIRECTIONAL



BROWSE IMAGES
ORDER SAMPLES



CARPET PRODUCT ARCHIVAL COLOUR FROST INSTALLED MONOLITHIC
LVT PRODUCT NORTHERN GRAIN COLOUR GLAZED OAK INSTALLED ASHLAR

Archival

With an organic worn appearance, Archival features subtle metallic accents that add a touch of refined elegance.

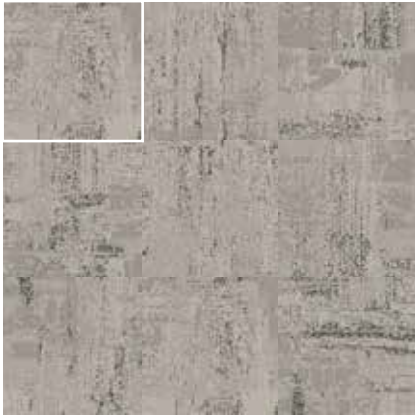
Colour range



9949001 FROST



9949002 PEARL



9949003 LINEN



9949004 PARCHMENT

Specifications

Region	Asia	Australia & New Zealand
Style Code	9949	
Product Construction	Tapestry Tufted Patterned Structured Loop Pile	
Yarn System	100% Recycled Solution Dyed Nylon	
Machine Gauge	1/10	
Pile Thickness	5.5mm (± 0.5mm)	5.1mm (± 0.5mm)
Total Thickness	9.8mm (± 0.5mm)	9.5mm (± 0.5mm)
Tile Size	50x50cm	
Area of Use (Asia Only)	Commercial Heavy Use	N/A
ACCS Grading (Australia & New Zealand Only)	N/A	Commercial Extra Heavy Duty
Lifetime Antimicrobial	Intersept®	
Soil/Stain Protection	Protekt2®	

View the full product specification on interface.com

Installation method



MONOLITHIC



BROWSE IMAGES
ORDER SAMPLES

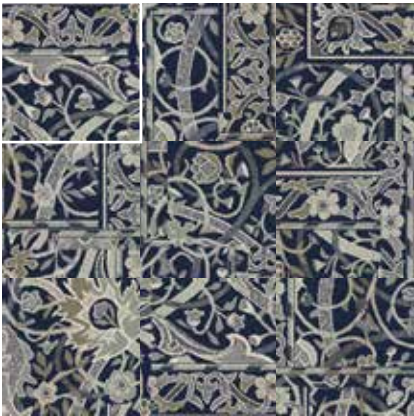


CARPET PRODUCT ARLEY COLOUR WALNUT INSTALLED NON DIRECTIONAL
LVT PRODUCT NORTHERN GRAIN COLOUR ANTIQUE WASH INSTALLED ASHLAR

Arley

Arley reworks the intricate details of traditional Herati patterns as large-scale motifs, fusing heritage and contemporary aesthetics.

Colour range



9959001 AZURE



9959002 BASIL



9959003 LICHEN



9959004 WALNUT

Specifications

Region	Asia	Australia & New Zealand
Style Code	9959	
Product Construction	Tapestry Tufted Patterned Structured Loop Pile	
Yarn System	100% Recycled Solution Dyed Nylon	
Machine Gauge	1/10	
Pile Thickness	4.3mm (± 0.5mm)	4.2mm (± 0.5mm)
Total Thickness	8.6mm (± 0.5mm)	8.0mm (± 0.5mm)
Tile Size	50x50cm	
Area of Use (Asia Only)	Commercial Heavy Use	N/A
ACCS Grading (Australia & New Zealand Only)	N/A	Commercial Extra Heavy Duty
Lifetime Antimicrobial	Intersept®	
Soil/Stain Protection	Protekt2®	

View the full product specification on [interface.com](#)

Installation method



NON DIRECTIONAL



BROWSE IMAGES
ORDER SAMPLES

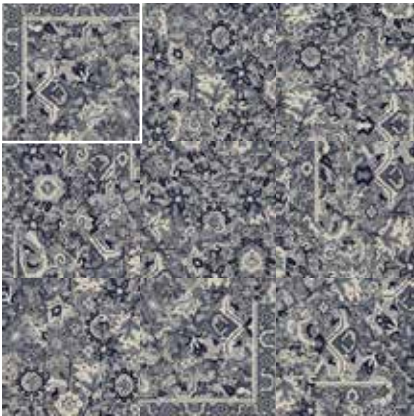


PRODUCT CHESHIRE STREET COLOUR COBALT INSTALLED NON DIRECTIONAL

Cheshire Street

Cheshire Street features ornate, small, floral motifs, inspired by the 20th-century interpretations of Art Nouveau and Arts and Crafts.

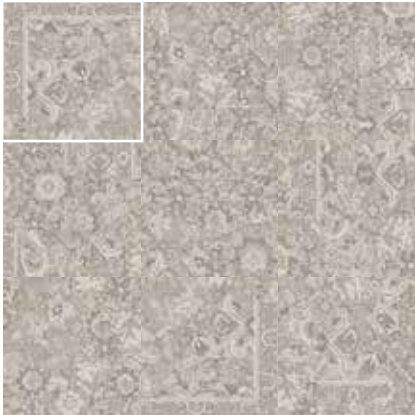
Colour range



9955001 COBALT



9955002 MIDNIGHT



9955003 TAUPE



9955004 DUNE

Specifications

Region	Asia	Australia & New Zealand
Style Code	9955	
Product Construction	Tapestry Tufted Patterned Structured Loop Pile	
Yarn System	100% Recycled Solution Dyed Nylon	
Machine Gauge	1/10	
Pile Thickness	2.5mm (± 0.5mm)	3.8mm (± 0.5mm)
Total Thickness	7.7mm (± 0.5mm)	7.8mm (± 0.5mm)
Tile Size	50x50cm	
Area of Use (Asia Only)	Commercial Heavy Use	N/A
ACCS Grading (Australia & New Zealand Only)	N/A	Commercial Extra Heavy Duty
Lifetime Antimicrobial	Intersept®	
Soil/Stain Protection	Protekt2®	

View the full product specification on [interface.com](#)

Installation method



MONOLITHIC



NON DIRECTIONAL



BROWSE IMAGES
ORDER SAMPLES



PRODUCT CIRCA THEN COLOUR CLAY INSTALLED NON DIRECTIONAL

Circa Then

Inspired by Mid-Century design, Cira Then features large-scale overlapping geometric forms to create a bold retro impression.

Colour range



9957001 HARBOUR



9957002 FOREST



9957003 FERN



9957004 CLAY

Specifications

Region	Asia	Australia & New Zealand
Style Code	9957	
Product Construction	Tapestry Tufted Patterned Structured Loop Pile	
Yarn System	100% Recycled Solution Dyed Nylon	
Machine Gauge	1/10	
Pile Thickness	4.1mm (± 0.5mm)	3.7mm (± 0.5mm)
Total Thickness	8.4mm (± 0.5mm)	7.6mm (± 0.5mm)
Tile Size	50x50cm	
Area of Use (Asia Only)	Commercial Heavy Use	N/A
ACCS Grading (Australia & New Zealand Only)	N/A	Commercial Extra Heavy Duty
Lifetime Antimicrobial	Intersept®	
Soil/Stain Protection	Protekt2®	

View the full product specification on [interface.com](https://www.interface.com)

Installation method



NON DIRECTIONAL



BROWSE IMAGES
ORDER SAMPLES

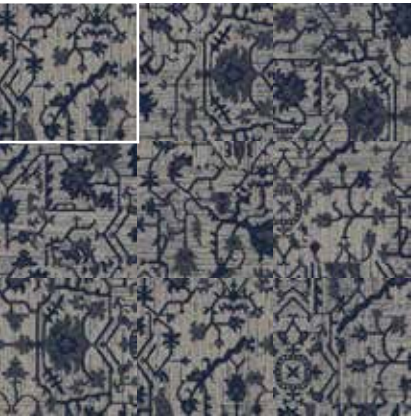


PRODUCT DECADES COLOUR EBONY INSTALLED MONOLITHIC

Decades

Influenced by the decorative and ornate impressions of the Rococo style, Decades feels elegantly theatrical using a metallic yarn.

Colour range



9950001 DENIM



9950002 EBONY



9950003 SLATE



9950004 MOCHA

Specifications

Region	Asia	Australia & New Zealand
Style Code	9950	
Product Construction	Tapestry Tufted Patterned Structured Loop Pile	
Yarn System	100% Recycled Solution Dyed Nylon	
Machine Gauge	1/10	
Pile Thickness	5.0mm (± 0.5mm)	5.1mm (± 0.5mm)
Total Thickness	8.9mm (± 0.5mm)	9.1mm (± 0.5mm)
Tile Size	50x50cm	
Area of Use (Asia Only)	Commercial Heavy Use	N/A
ACCS Grading (Australia & New Zealand Only)	N/A	Commercial Extra Heavy Duty
Lifetime Antimicrobial	Intersept®	
Soil/Stain Protection	Protekt2®	

View the full product specification on interface.com

Installation method



MONOLITHIC



BROWSE IMAGES
ORDER SAMPLES



PRODUCT FORTNIGHT COLOUR NATURAL INSTALLED NON DIRECTIONAL

Fortnight

Fortnight exudes opulence through its ornate Renaissance styling, enhanced with luxurious metallic yarn.

Colour range



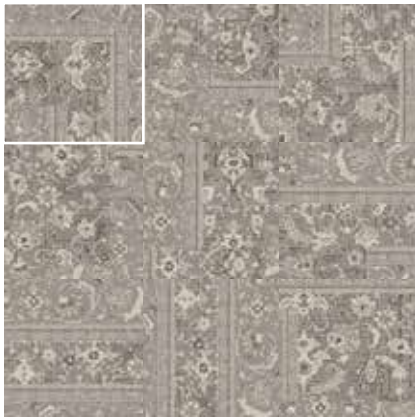
9951001 FOG



9951002 BONE



9951003 DOVE



9951004 NATURAL

Specifications

Region	Asia	Australia & New Zealand
Style Code	9951	
Product Construction	Tapestry Tufted Patterned Structured Loop Pile	
Yarn System	100% Recycled Solution Dyed Nylon	
Machine Gauge	1/10	
Pile Thickness	3.8mm (± 0.5mm)	3.9mm (± 0.5mm)
Total Thickness	9.0mm (± 0.5mm)	8.3mm (± 0.5mm)
Tile Size	50x50cm	
Area of Use (Asia Only)	Commercial Heavy Use	N/A
ACCS Grading (Australia & New Zealand Only)	N/A	Commercial Extra Heavy Duty
Lifetime Antimicrobial	Intersept®	
Soil/Stain Protection	Protekt2®	

View the full product specification on [interface.com](https://www.interface.com)

Installation method



MONOLITHIC



NON DIRECTIONAL



BROWSE IMAGES
ORDER SAMPLES

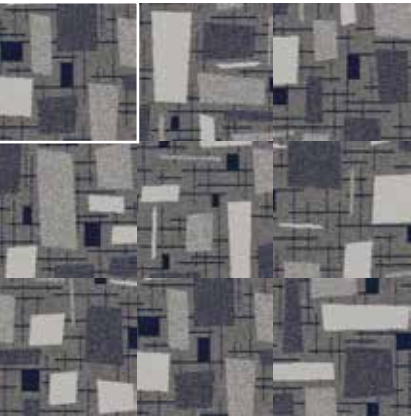


PRODUCT NEWSTALGIA COLOUR WHEAT INSTALLED MONOLITHIC

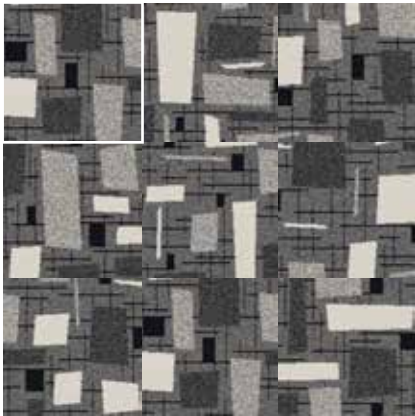
Newstalgia

Newstalgia captures a distinct retro vibe with its tonal block and criss-cross design.

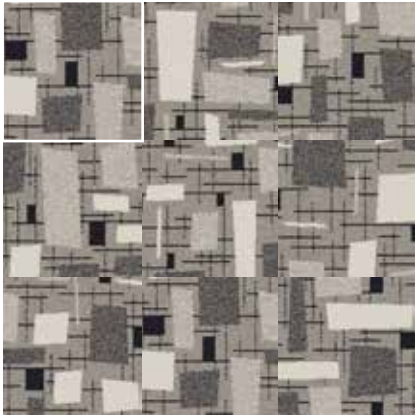
Colour range



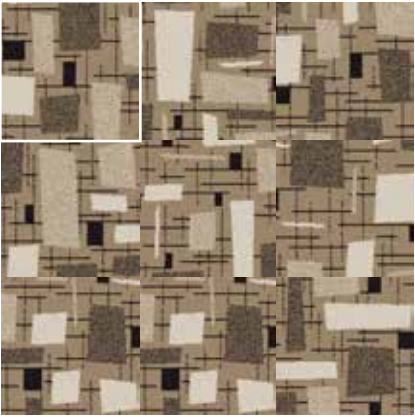
9954001 INDIGO



9954002 FLINT



9954003 FOSSIL



9954004 WHEAT

Specifications

Region	Asia	Australia & New Zealand
Style Code	9954	
Product Construction	Tapestry Tufted Patterned Structured Loop Pile	
Yarn System	100% Recycled Solution Dyed Nylon	
Machine Gauge	1/10	
Pile Thickness	3.8mm (± 0.5mm)	4.2mm (± 0.5mm)
Total Thickness	9.0mm (± 0.5mm)	8.3mm (± 0.5mm)
Tile Size	50x50cm	
Area of Use (Asia Only)	Commercial Heavy Use	N/A
ACCS Grading (Australia & New Zealand Only)	N/A	Commercial Extra Heavy Duty
Lifetime Antimicrobial	Intersept®	
Soil/Stain Protection	Protekt2®	

View the full product specification on [interface.com](#)

Installation method



BROWSE IMAGES
ORDER SAMPLES



CARPET PRODUCT REELING COLOUR SAPPHIRE
LVT PRODUCT LEVEL SET TEXTURED STONES COLOUR COOL POLISHED CEMENT INSTALLED NON DIRECTIONAL

Reeling

A reinterpretation of traditional, geometric Turkish textiles, Reeling makes a dynamic impression with its contrasting tones and bold shapes.

Colour range



9962001 SAPPHIRE



9962002 PEBBLE



9962003 AVOCADO



9962004 SPICE

Specifications

Region	Asia	Australia & New Zealand
Style Code	9962	
Product Construction	Tapestry Tufted Patterned Structured Loop Pile	
Yarn System	100% Recycled Solution Dyed Nylon	
Machine Gauge	1/10	
Pile Thickness	4.2mm (± 0.5mm)	3.6mm (± 0.5mm)
Total Thickness	8.4mm (± 0.5mm)	7.7mm (± 0.5mm)
Tile Size	50x50cm	
Area of Use (Asia Only)	Commercial Heavy Use	N/A
ACCS Grading (Australia & New Zealand Only)	N/A	Commercial Extra Heavy Duty
Lifetime Antimicrobial	Intersept®	
Soil/Stain Protection	Protekt2®	

View the full product specification on interface.com

Installation method



NON DIRECTIONAL



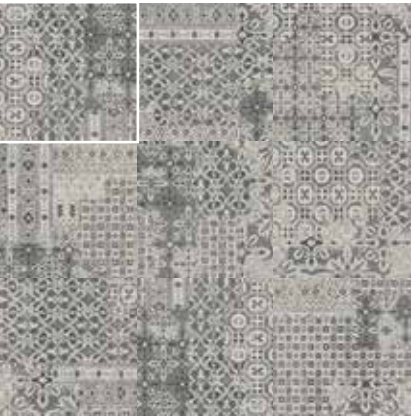
BROWSE IMAGES
ORDER SAMPLES



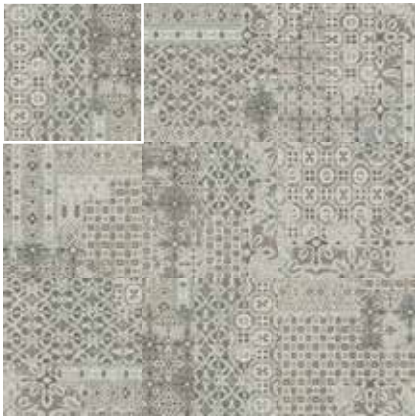
Rekindled

Rekindled feels subtly worn and aged with its calm and neutral vintage patchwork design.

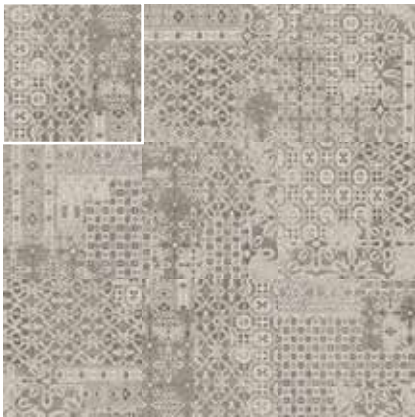
Colour range



9956001 STEEL



9956002 SAGE



9956003 ASH



9956004 SAND

Specifications

Region	Asia	Australia & New Zealand
Style Code	9956	
Product Construction	Tapestry Tufted Patterned Structured Loop Pile	
Yarn System	100% Recycled Solution Dyed Nylon	
Machine Gauge	1/10	
Pile Thickness	3.8mm (± 0.5mm)	4.4mm (± 0.5mm)
Total Thickness	9.0mm (± 0.5mm)	8.3mm (± 0.5mm)
Tile Size	50x50cm	
Area of Use (Asia Only)	Commercial Heavy Use	N/A
ACCS Grading (Australia & New Zealand Only)	N/A	Commercial Extra Heavy Duty
Lifetime Antimicrobial	Intersept®	
Soil/Stain Protection	Protekt2®	

View the full product specification on [interface.com](https://www.interface.com)

Installation method



NON DIRECTIONAL



BROWSE IMAGES
ORDER SAMPLES

PRODUCT REKINDLED COLOUR SAND INSTALLED NON DIRECTIONAL



PRODUCT RETROSPEC COLOUR OLIVE INSTALLED NON DIRECTIONAL
PRODUCT OPEN AIR 402 COLOUR NATURAL INSTALLED ASHLAR

Retrospec

Bright, bold and geometric, Retrospec creates an impression of the traditional kilim designs of the Middle East.

Colour range



9958001 ROYAL



9958002 OLIVE



9958003 EMERALD



9958004 TERRACOTTA

Specifications

Region	Asia	Australia & New Zealand
Style Code	9958	
Product Construction	Tapestry Tufted Patterned Structured Loop Pile	
Yarn System	100% Recycled Solution Dyed Nylon	
Machine Gauge	1/10	
Pile Thickness	3.4mm (± 0.5mm)	3.8mm (± 0.5mm)
Total Thickness	8.6mm (± 0.5mm)	7.9mm (± 0.5mm)
Tile Size	50x50cm	
Area of Use (Asia Only)	Commercial Heavy Use	N/A
ACCS Grading (Australia & New Zealand Only)	N/A	Commercial Extra Heavy Duty
Lifetime Antimicrobial	Intersept®	
Soil/Stain Protection	Protekt2®	

View the full product specification on [interface.com](https://www.interface.com)

Installation method



NON DIRECTIONAL



BROWSE IMAGES
ORDER SAMPLES

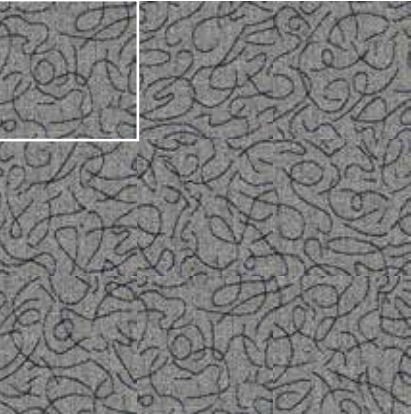


PRODUCT UNSPOOLED COLOUR GRAPHITE INSTALLED MONOLITHIC

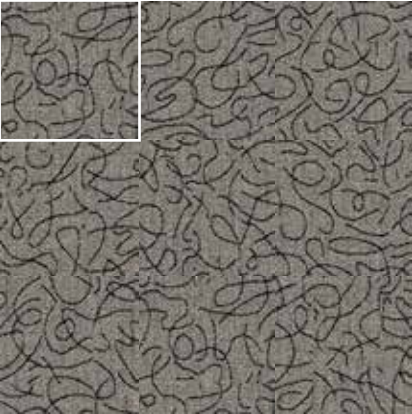
Unspooled

Unspooled draws inspiration from the naive visual motifs of the late 20th-Century, boasting an organic scribble design.

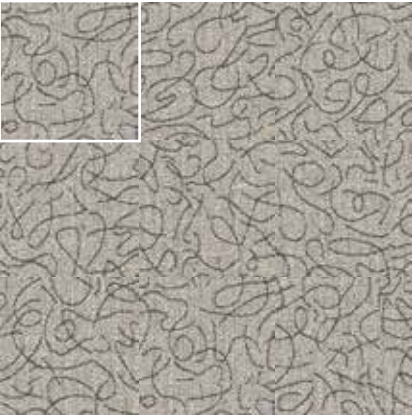
Colour range



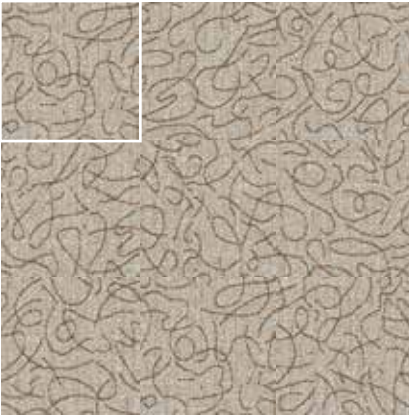
9953001 PEWTER



9953002 GRAPHITE



9953003 OYSTER



9953004 OATMEAL

Specifications

Region	Asia	Australia & New Zealand
Style Code	9953	
Product Construction	Tapestry Tufted Patterned Structured Loop Pile	
Yarn System	100% Recycled Solution Dyed Nylon	
Machine Gauge	1/10	
Pile Thickness	4.1mm (± 0.5mm)	5.0mm (± 0.5mm)
Total Thickness	9.4mm (± 0.5mm)	8.9mm (± 0.5mm)
Tile Size	50x50cm	
Area of Use (Asia Only)	Commercial Heavy Use	N/A
ACCS Grading (Australia & New Zealand Only)	N/A	Commercial Extra Heavy Duty
Lifetime Antimicrobial	Intersept®	
Soil/Stain Protection	Protekt2®	

View the full product specification on [interface.com](#)

Installation method



MONOLITHIC



BROWSE IMAGES
ORDER SAMPLES

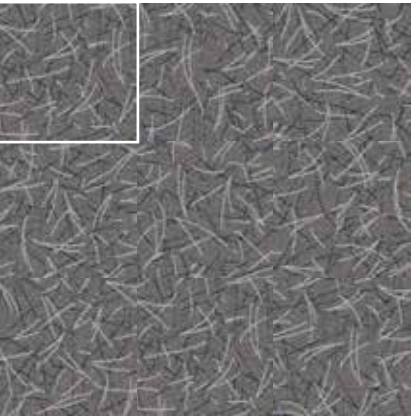


PRODUCT UNWOUND COLOUR CAMEL INSTALLED MONOLITHIC
PRODUCT CONNECTED ETHOS CE100 COLOUR CONSIDER INSTALLED NON DIRECTIONAL

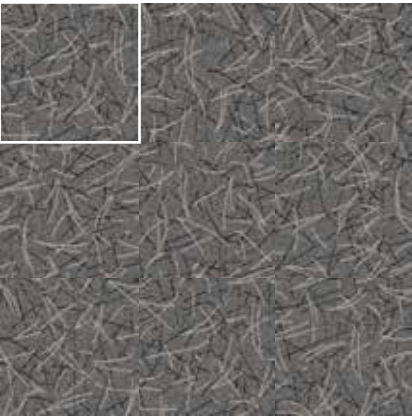
Unwound

Playfully elegant, Unwound features an illustrative fallen pine needle design in neutral tones.

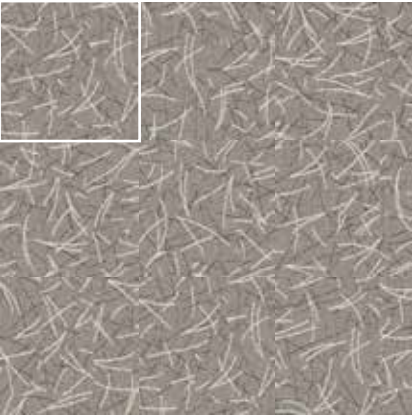
Colour range



9952001 TWILIGHT



9952002 CARBON



9952003 NICKEL



9952004 CAMEL

Specifications

Region	Asia	Australia & New Zealand
Style Code	9952	
Product Construction	Tapestry Tufted Patterned Structured Loop Pile	
Yarn System	100% Recycled Solution Dyed Nylon	
Machine Gauge	1/10	
Pile Thickness	4.1mm (± 0.5mm)	4.0mm (± 0.5mm)
Total Thickness	8.4mm (± 0.5mm)	8.0mm (± 0.5mm)
Tile Size	50x50cm	
Area of Use (Asia Only)	Commercial Heavy Use	N/A
ACCS Grading (Australia & New Zealand Only)	N/A	Commercial Extra Heavy Duty
Lifetime Antimicrobial	Intersept®	
Soil/Stain Protection	Protekt2®	

View the full product specification on [interface.com](#)

Installation method



MONOLITHIC



BROWSE IMAGES
ORDER SAMPLES



PRODUCT YESTERDAYS COLOUR FLANNEL INSTALLED NON DIRECTIONAL

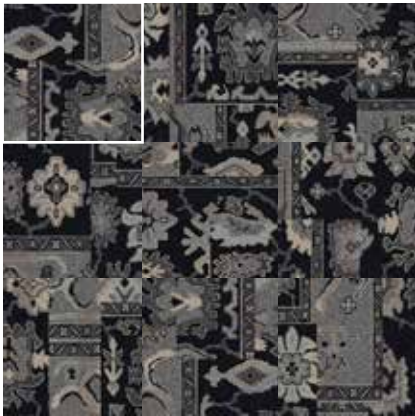
Yesterdays

Inspired by traditional Turkish rugs, Yesterdays uses unexpected colour combinations to create a contemporary impression.

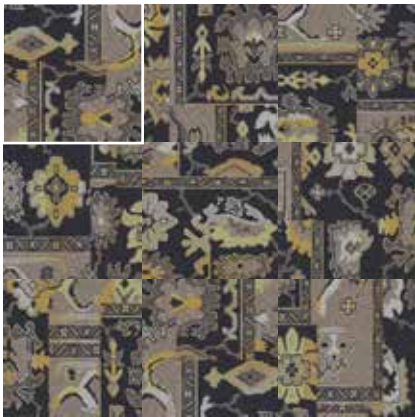
Colour range



9960001 PRUSSIAN



9960002 ONYX



9960003 FLANNEL



9960004 BRONZE

Specifications

Region	Asia	Australia & New Zealand
Style Code	9960	
Product Construction	Tapestry Tufted Patterned Structured Loop Pile	
Yarn System	100% Recycled Solution Dyed Nylon	
Machine Gauge	1/10	
Pile Thickness	4.0mm (± 0.5mm)	3.7mm (± 0.5mm)
Total Thickness	8.4mm (± 0.5mm)	7.8mm (± 0.5mm)
Tile Size	50x50cm	
Area of Use (Asia Only)	Commercial Heavy Use	N/A
ACCS Grading (Australia & New Zealand Only)	N/A	Commercial Extra Heavy Duty
Lifetime Antimicrobial	Intersept®	
Soil/Stain Protection	Protekt2®	

View the full product specification on interface.com

Installation method



NON DIRECTIONAL



BROWSE IMAGES
ORDER SAMPLES

Get in touch

Australia
Interface Australia
local toll free: 1800 804 361

India
Interface India
tel: +91 80 4613 1313

South East Asia
Interface Asia
tel: +65 6478 1510

South Korea
Interface South Korea
tel: +82 2 555 1734

Japan
Interface Japan
tel: +81 3 5733 5211

Beijing
Interface China
tel: +86 10 6590 7810

Hong Kong
Interface China
tel: +852 2802 0838

Shanghai
Interface China
tel: +86 21 6340 3868

www.interface.com



