



Interface®

Interface®

Past Forward.™



Climate change is undeniable. And reversible. Our mission is to prove it. Join the #ClimateTakeBack and help create a climate fit for life.

Past Forward.

Remastered,
reimagined
and remade.



**Introducing
Past Forward; a modern
carpet collection from
Interface[®], inspired by
decades of innovation
and iconic designs.**

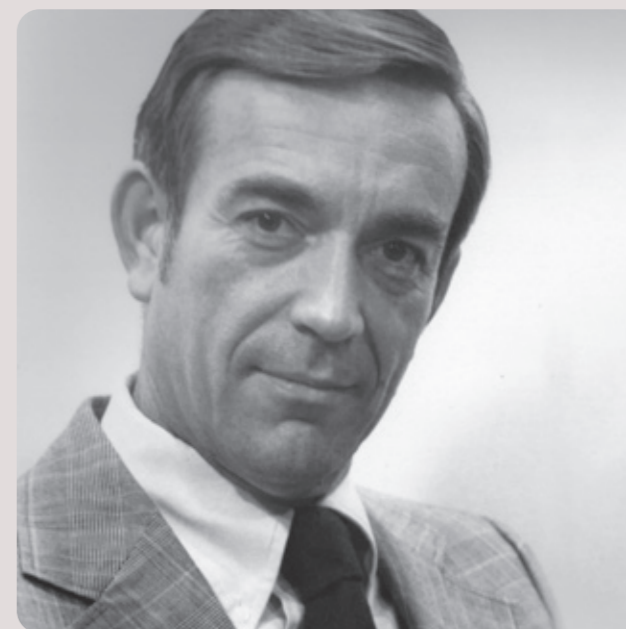
1973

1973 — the year Interface founder, Ray Anderson first introduced carpet tile to the Americas, after discovering it during a European trip. Together with his team, Ray led the innovative charge, developing the Interface carpet tile of the future.



THE EARLY DAYS OF INTERFACE

While at the time, these tiles had limited design capabilities, Ray imagined their usage within the new open office. Recognizing their performance potential to reduce noise levels and create a softened ambience in shared spaces, he seized the opportunity to reinvent the modular tile and revolutionize commercial interior design.



RAY ANDERSON, 1973

Born and raised in Kidderminster, England, the designer of our Past Forward Collection, David Oakey was honing his craft, just some streets away from where Ray Anderson first masterminded his product. And as if by fate, their paths would continue to cross when David answered a job advertisement in a trade magazine to relocate to the town of LaGrange, Georgia – in the very same year and location where Interface set up its first manufacturing facility.

**WANTED!
ENGLISH CARPET
DESIGNER**

Just as David celebrates fifty years designing carpets in the United States, Interface is celebrating fifty years of design and manufacturing. This shared anniversary inspired a look back through the design trends that have come and gone, as well as contemplating how they might influence interiors of today.



'60s-'70s

From the interiors of the '60s that preceded the carpet tile, we saw traditional, muted hued area rugs to diverse patterns of wall-to-wall broadloom featuring the look of Mid-Century Modern, as well as abstraction, Art Nouveau, Art Deco and English Craft designs in bold bright colors.

In the '70s we saw the continuation of impactful patterns moving towards "groovy waves" in bright avocado greens, yellows and oranges.



'80s-'90s

The '80s ushered in post-modern spaces complemented by pastels and greys, ahead of the zen-like soft and subtle colors of the '90s, at which point, bordered flooring, in cool and warm neutrals put together in a casual style led the way.

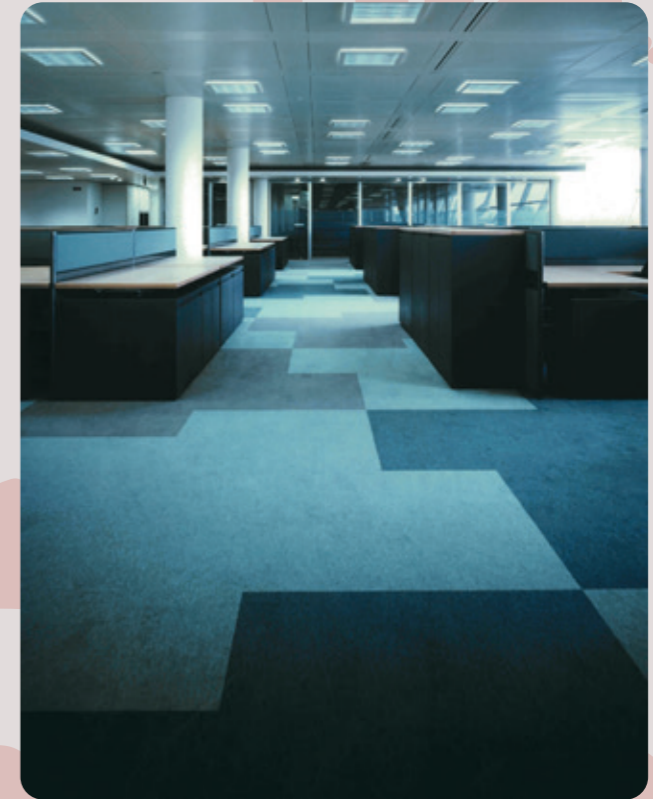




'00s-'10s

Welcome to the 2000s, when large chevrons were the pattern du jour. Natural fibers such as jute-inspired flooring and grey and espresso wood floors were here in a big way.

Into the 2010s and brighter, bold accents made statements. And buffalo plaids, a Mid-Century Modern revival, wider floor planks and modern farmhouse styles were all having a moment.



Today, as the desire for injecting residential design cues into shared spaces emerges, we're seeing the use of cozy materials to create warm and inviting environments. And the combination of rugs with hard flooring is becoming more popular, not only for acoustic properties but also to define spaces and as pure design accents.

“Today's trends feature nostalgia - it seems the perfect time to reflect on the work of the best in history. The result, is Past Forward.

David Oakey
Designer of Past Forward

In the past, these iconic designs could not be made into carpet tiles. However, thanks to advancements made in manufacturing, historic patterns reminiscent of woven broadloom have been given a contemporary update, with all the performance benefits of modular flooring.



INTERFACE DESIGNS OF THE PAST.



Bringing the Past Forward



Past Forward fuses retro colors and intricate patterns with today's technology to create a collection of nostalgic designs that perform to the demanding standards of today's commercial spaces.

Create a moment within a space



The Past Forward collection has been designed as an innovative area rug solution to be used expressively as a stylish accent to larger floorplates. Each product helps to define purposeful and comfortable spaces with a timeless style. Whether you want to create a cozy corner that provides a feeling of home, add structure to a space with the use of borders, or add wayfinding to an open-plan room, the collection gives you the opportunity to get creative and make a statement.







Unique

With unique combinations that can be mixed and matched to suit, versatility is at the core of this collection. The expansive range of products features both monolithic and non directional installation, and can be used in any configuration, providing a contemporary take on heritage patterns. Use one product at a time as a defined accent, or incorporate clashing patterns by using more than one at once.



combinations

Made to complement



With a choice of 14 dynamic products that work seamlessly with our integrated flooring systems, Past Forward has the flexibility to complement our more subtle carpet tiles with neutrals, nora® rubber flooring and our LVT styles.



CARPET PRODUCT UNSPOOLED COLOR OYSTER INSTALLED MONOLITHIC
LVT PRODUCT NORTHERN GRAIN COLOR BARE OAK INSTALLED ASHLAR



CARPET PRODUCT DECADES COLOR EBONY
NORA RUBBER PRODUCT NORAMENT CASTELLO COLOR 5356

While Past Forward has been designed to work harmoniously with all Interface integrated flooring systems, we've made some pairing recommendations of our own to inspire your projects.

For example, opposite the organic forms and neutral colors of Unspooled™ complement the texture and tone of Northern Grain™ LVT.

On the left, pairing the theatrical design of Decades™ with the simplicity of norament castello™ creates an impactful accent.

Below, the warm tones and domestic feeling of Retrospec™ alongside the neutrality of Open Air™ 402, helps to clearly define areas within the space.



PRODUCT RETROSPEC COLOR OLIVE INSTALLED NON DIRECTIONAL
PRODUCT OPEN AIR 402 COLOR NATURAL INSTALLED ASHLAR



Patterns of the past, constructed for the future

Interface advocates for design that has a positive impact on people, spaces, and the environment, which is why Past Forward – like all of our products – is constructed with the future in mind.

As part of our Carbon Neutral Floors™ program, the Past Forward collection uses manufacturing processes, recycled content and other materials that deliver a low carbon footprint.





Curating the classics



Vintage style, remastered for modern interiors

Past Forward is our largest collection to date, featuring an array of 14 dynamic products, inspired by traditional, vintage, and retro designs.

The more traditional products in the collection draw inspiration from the mastery of Middle Eastern textile craftsmanship. With striking visual motifs and impactful colorways, these designs fuse heritage with contemporary aesthetics to make a bold statement.

More muted in tone, the vintage designs marry organic worn textures with the ornate stylings of the Rococo, Art Nouveau, and the Arts & Craft movements, some of which have been constructed with a beautiful metallic yarn.

Taking inspiration from classic Mid-Century design, our range of retro products features bold geometric shapes and softer vintage swirls in a range of complementary colorways.

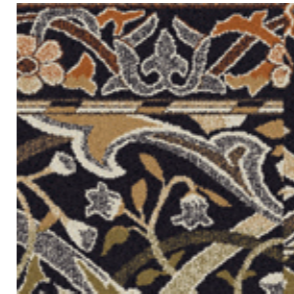
Past Forward uses a nostalgic palette of colors, tones, and metallic finishes, offering a counterpoint to more contemporary colors and materials of modern commercial interior spaces — reappropriating the designs for today.

Products can be laid using a non directional or monolithic installation method depending on the style, offering an extensive range of possible layouts.

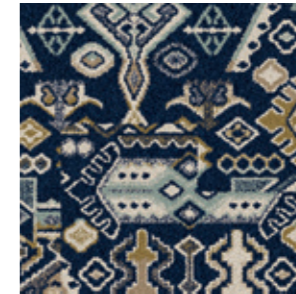
Antiquities™



Arley™



Reeling™



Retrospec™



Yesterdays™



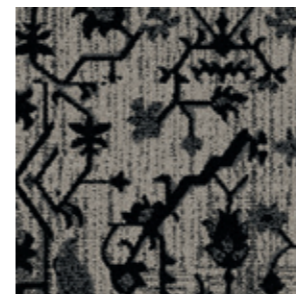
Archival™



Cheshire Street™



Decades™



Fortnight™



Rekindled™



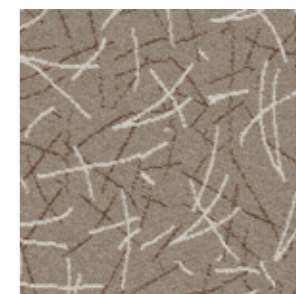
Circa Then™



Newstalgia™



Unwound™



Unspooled™



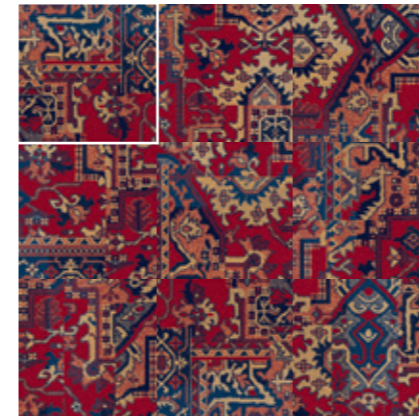


CARPET PRODUCT ANTIQUITIES COLOR AMBER INSTALLED NON DIRECTIONAL
 LVT PRODUCT TEXTURED WOODGRAINS COLOR RUSTIC OAK INSTALLED ASHLAR

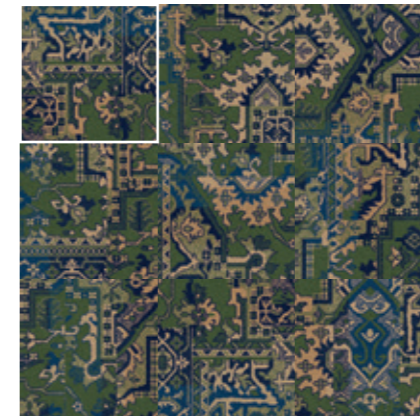
Antiquities

Antiquities exudes the mastery of Turkish, Wilton, and Renaissance textile craftsmanship, making a bold statement with impactful colorways.

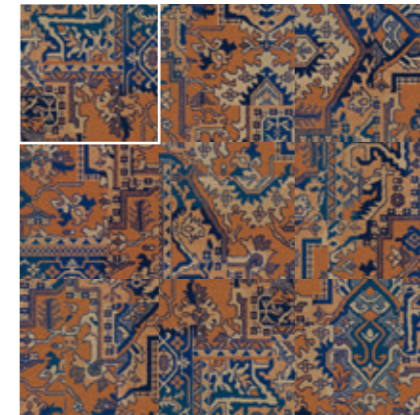
Color Range



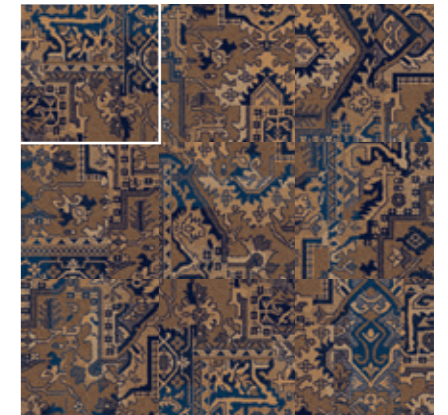
108230 CRIMSON



108231 JADE



108232 CORAL



108233 AMBER

Specifications

Modular, 50 cm x 50 cm	14122
Yarn Manufacturer	Aquafil
Yarn System	100% Recycled Content Nylon
Dye Method	100% Solution Dyed
Construction	Engaged Tufted Pattern Loop
Preservative Protection	Intersept®
Soil/Stain Protection	Protekt1®
Pile Thickness	0.148 in, 3.8 mm
Pile Density	6,811 oz/yd ³
Total Recycled Content	up to 84%
Indoor Air Quality	CRI Green Label Plus #GLP0820

Installation Method



NON DIRECTIONAL



BROWSE IMAGES
ORDER SAMPLES

View the full product specification on [interface.com](https://www.interface.com)



CARPET PRODUCT ARCHIVAL COLOR FROST INSTALLED MONOLITHIC
LVT PRODUCT NORTHERN GRAIN COLOR GLAZED OAK INSTALLED ASHLAR

Archival

With an organic worn appearance, Archival features subtle metallic accents that add a touch of refined elegance.

Color Range



108181 FROST



108182 PEARL



108183 LINEN



108184 PARCHMENT

Specifications

Modular, 50 cm x 50 cm	14679
Yarn Manufacturer	Aquafil
Yarn System	100% Recycled Content Nylon
Dye Method	100% Solution Dyed
Construction	Engaged Tufted Pattern Loop
Preservative Protection	Intersept®
Soil/Stain Protection	Protekt ² ®
Pile Thickness	0.196 in, 5.0 mm
Pile Density	7,163 oz/yd ²
Total Recycled Content	up to 86%
Indoor Air Quality	CRI Green Label Plus #GLP0820

Installation Method



MONOLITHIC



BROWSE IMAGES
ORDER SAMPLES

View the full product specification on [interface.com](https://www.interface.com)



CARPET PRODUCT ARLEY COLOR WALNUT INSTALLED NON DIRECTIONAL
 LVT PRODUCT NORTHERN GRAIN COLOR ANTIQUE WASH INSTALLED ASHLAR

Arley

Arley reworks the intricate details of traditional Herati patterns as large-scale motifs, fusing heritage and contemporary aesthetics.

Color Range



108222 AZURE



108223 BASIL



108224 LICHEN



108225 WALNUT

Specifications

Modular, 50 cm x 50 cm	14119
Yarn Manufacturer	Aquafil
Yarn System	100% Recycled Content Nylon
Dye Method	100% Solution Dyed
Construction	Engaged Tufted Pattern Loop
Preservative Protection	Intersept®
Soil/Stain Protection	Protekt2®
Pile Thickness	0.143 in, 3.6 mm
Pile Density	7,049 oz/yd ²
Total Recycled Content	up to 84%
Indoor Air Quality	CRI Green Label Plus #GLP0820

Installation Method



NON DIRECTIONAL



BROWSE IMAGES
ORDER SAMPLES

View the full product specification on interface.com

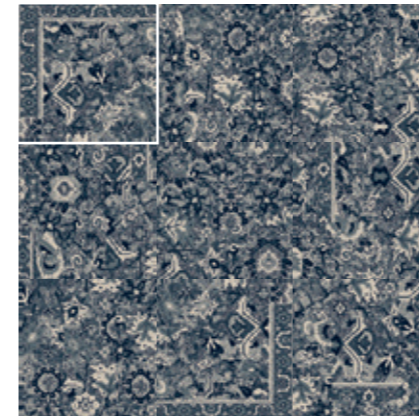


PRODUCT CHESHIRE STREET COLOR COBALT INSTALLED NON DIRECTIONAL

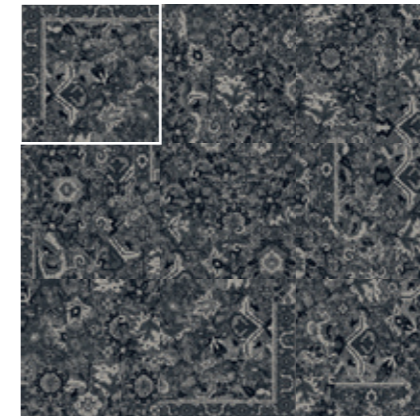
Cheshire Street

Cheshire Street features ornate, small, floral motifs, inspired by the 20th-century interpretations of Art Nouveau and Arts and Crafts.

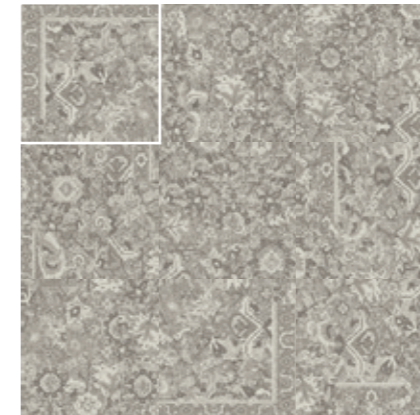
Color Range



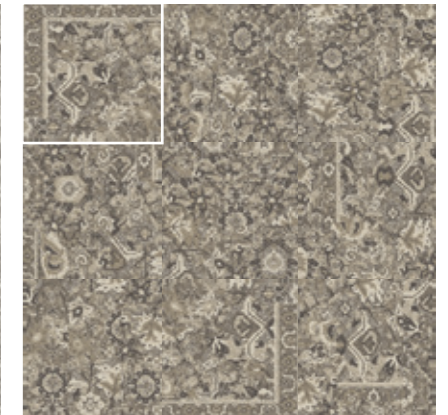
108206 COBALT



108207 MIDNIGHT



108208 TAUPE



108209 DUNE

Specifications

Modular, 50 cm x 50 cm	14111
Yarn Manufacturer	Aquafil
Yarn System	100% Recycled Content Nylon
Dye Method	100% Solution Dyed
Construction	Engaged Tufted Pattern Loop
Preservative Protection	Intersept®
Soil/Stain Protection	Protekt2®
Pile Thickness	0.136 in, 3.4 mm
Pile Density	7,941 oz/yd ²
Total Recycled Content	up to 85%
Indoor Air Quality	CRI Green Label Plus #GLP0820

Installation Methods



MONOLITHIC



NON DIRECTIONAL



BROWSE IMAGES
ORDER SAMPLES

View the full product specification on [interface.com](https://www.interface.com)



PRODUCT CIRCA THEN COLOR CLAY INSTALLED NON DIRECTIONAL

Circa Then

Inspired by Mid-Century design, Circa Then features large-scale overlapping geometric forms to create a bold retro impression.

Color Range



108214 HARBOR



108215 FOREST



108216 FERN



108217 CLAY

Specifications

Modular, 50 cm x 50 cm	14115
Yarn Manufacturer	Aquafil
Yarn System	100% Recycled Content Nylon
Dye Method	100% Solution Dyed
Construction	Engaged Tufted Pattern Loop
Preservative Protection	Intersept®
Soil/Stain Protection	Protekt2®
Pile Thickness	0.134 in, 3.4 mm
Pile Density	7,522 oz/yd ²
Total Recycled Content	up to 84%
Indoor Air Quality	CRI Green Label Plus #GLP0820

Installation Method



NON DIRECTIONAL



BROWSE IMAGES
ORDER SAMPLES

View the full product specification on [interface.com](https://www.interface.com)



PRODUCT DECADES COLOR EBONY INSTALLED MONOLITHIC

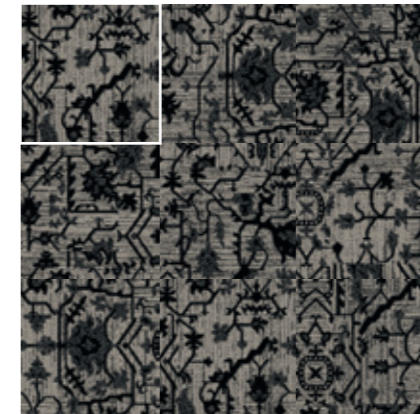
Decades

Influenced by the decorative and ornate impressions of the Rococo style, Decades feels elegantly theatrical using a metallic yarn.

Color Range



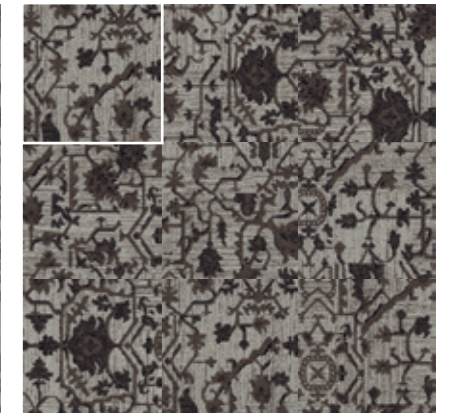
108185 DENIM



108186 EBONY



108187 SLATE



108188 MOCHA

Specifications

Modular, 50 cm x 50 cm	12508
Yarn Manufacturer	Aquafil
Yarn System	100% Recycled Content Nylon
Dye Method	100% Solution Dyed
Construction	Engaged Tufted Pattern Loop
Preservative Protection	Intersept®
Soil/Stain Protection	Protekt2®
Pile Thickness	0.235 in, 6.0 mm
Pile Density	5,515 oz/yd ²
Total Recycled Content	73%
Indoor Air Quality	CRI Green Label Plus #GLP0820

Installation Method



MONOLITHIC



BROWSE IMAGES
ORDER SAMPLES

[View the full product specification on interface.com](https://www.interface.com)

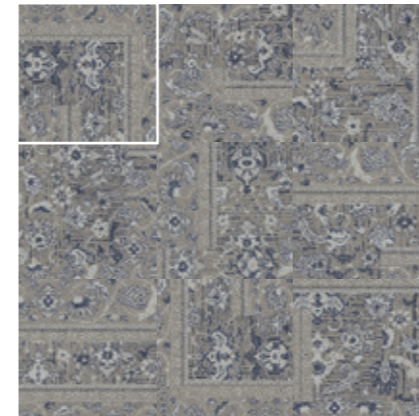


PRODUCT FORTNIGHT COLOR NATURAL INSTALLED NON DIRECTIONAL

Fortnight

Fortnight exudes opulence through its ornate Renaissance styling, enhanced with luxurious metallic yarn.

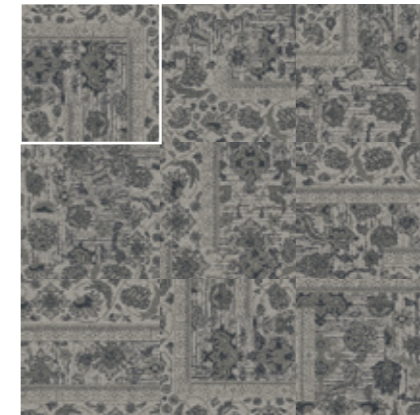
Color Range



108189 FOG



108190 BONE



108191 DOVE



108192 NATURAL

Specifications

Modular, 50 cm x 50 cm	14102
Yarn Manufacturer	Aquafil
Yarn System	100% Recycled Content Nylon
Dye Method	100% Solution Dyed
Construction	Engaged Tufted Pattern Loop
Preservative Protection	Intersept®
Soil/ Stain Protection	Protekt2®
Pile Thickness	0.155 in, 3.9 mm
Pile Density	8,361 oz/yd ²
Total Recycled Content	up to 85%
Indoor Air Quality	CRI Green Label Plus #GLP0820

Installation Methods



MONOLITHIC



NON DIRECTIONAL



BROWSE IMAGES
ORDER SAMPLES

View the full product specification on [interface.com](https://www.interface.com)

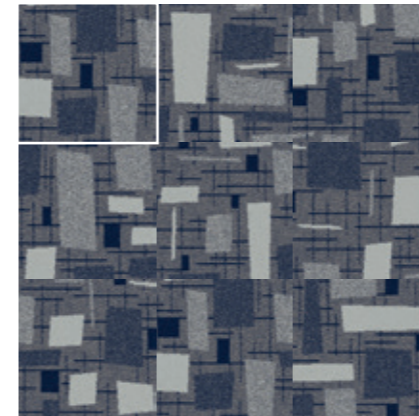


PRODUCT NEWSTALGIA COLOR WHEAT INSTALLED MONOLITHIC

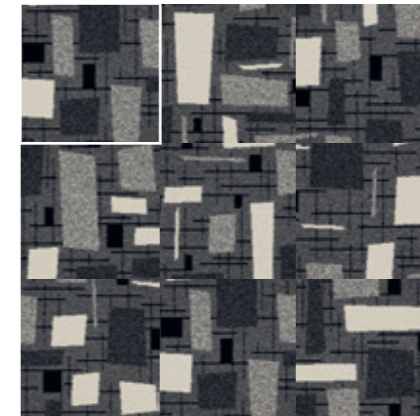
Newstalgia

Newstalgia captures a distinct retro vibe with its tonal block and criss-cross design.

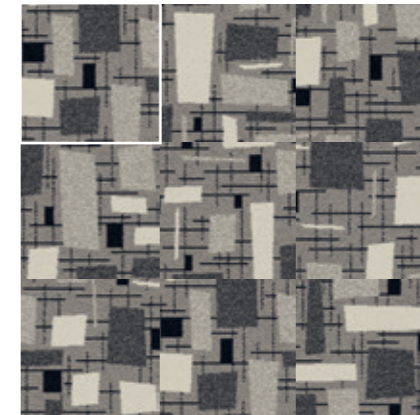
Color Range



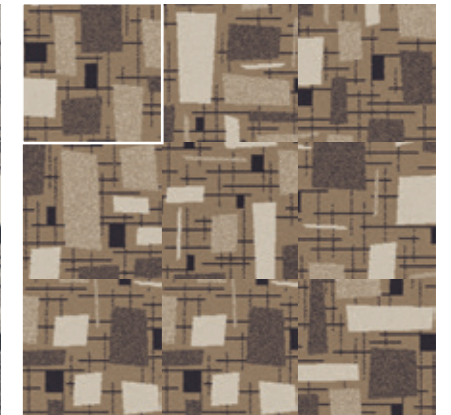
108202 INDIGO



108203 FLINT



108204 FOSSIL



108205 WHEAT

Specifications

Modular, 50 cm x 50 cm	14108
Yarn Manufacturer	Aquafil
Yarn System	100% Recycled Content Nylon
Dye Method	100% Solution Dyed
Construction	Engaged Tufted Pattern Loop
Preservative Protection	Intersept®
Soil/Stain Protection	Protekt2®
Pile Thickness	0.159 in, 4.0 mm
Pile Density	6,113 oz/yd ²
Total Recycled Content	up to 84%
Indoor Air Quality	CRI Green Label Plus #GLP0820

Installation Method



MONOLITHIC



BROWSE IMAGES
ORDER SAMPLES

[View the full product specification on interface.com](https://www.interface.com)



CARPET PRODUCT REELING COLOR SAPPHIRE
 LVT PRODUCT TEXTURED STONES COLOR COOL POLISHED CEMENT INSTALLED NON DIRECTIONAL

Reeling

A reinterpretation of traditional, geometric Turkish textiles, Reeling makes a dynamic impression with its contrasting tones and bold shapes.

Color Range



108234 SAPPHIRE



108235 PEBBLE



108236 AVOCADO



108237 SPICE

Specifications

Modular, 50 cm x 50 cm	14124
Yarn Manufacturer	Aquafil
Yarn System	100% Recycled Content Nylon
Dye Method	100% Solution Dyed
Construction	Engaged Tufted Pattern Loop
Preservative Protection	Intersept®
Soil/ Stain Protection	Protekt2®
Pile Thickness	0.122 in, 3.1 mm
Pile Density	7,672 oz/yd ²
Total Recycled Content	up to 84%
Indoor Air Quality	CRI Green Label Plus #GLP0820

Installation Method



NON DIRECTIONAL



BROWSE IMAGES
ORDER SAMPLES

View the full product specification on [interface.com](https://www.interface.com)

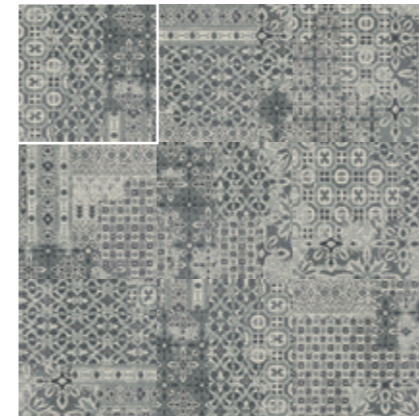


PRODUCT REKINDLED COLOR SAND INSTALLED NON DIRECTIONAL

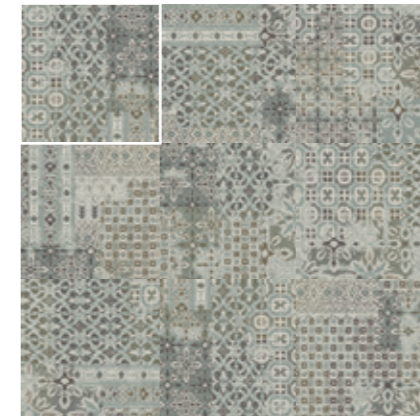
Rekindled

Rekindled feels subtly worn and aged with its calm and neutral vintage patchwork design.

Color Range



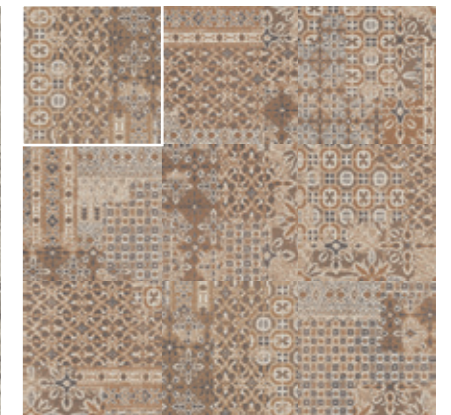
108210 STEEL



108211 SAGE



108212 ASH



108213 SAND

Specifications

Modular, 50 cm x 50 cm	14113
Yarn Manufacturer	Aquafil
Yarn System	100% Recycled Content Nylon
Dye Method	100% Solution Dyed
Construction	Engaged Tufted Pattern Loop
Preservative Protection	Intersept®
Soil/ Stain Protection	Protekt2®
Pile Thickness	0.149 in, 3.8 mm
Pile Density	8,215 oz/yd ²
Total Recycled Content	up to 85%
Indoor Air Quality	CRI Green Label Plus #GLP0820

Installation Method



NON DIRECTIONAL



BROWSE IMAGES
ORDER SAMPLES

View the full product specification on [interface.com](https://www.interface.com)



PRODUCT RETROSPEC COLOR OLIVE INSTALLED NON DIRECTIONAL
 PRODUCT OPEN AIR 402 COLOR NATURAL INSTALLED ASHLAR

Retrospec

Bright, bold and geometric, Retrospec creates an impression of the traditional kilim designs of the Middle East.

Color Range



108218 ROYAL



108219 OLIVE



108220 EMERALD



108221 TERRACOTTA

Specifications

Modular, 50 cm x 50 cm	14117
Yarn Manufacturer	Aquafil
Yarn System	100% Recycled Content Nylon
Dye Method	100% Solution Dyed
Construction	Engaged Tufted Pattern Loop
Preservative Protection	Intersept®
Soil/Stain Protection	Protekt2®
Pile Thickness	0.137 in, 3.5 mm
Pile Density	7,095 oz/yd ²
Total Recycled Content	up to 84%
Indoor Air Quality	CRI Green Label Plus #GLP0820

View the full product specification on [interface.com](https://www.interface.com)

Installation Method



NON DIRECTIONAL



BROWSE IMAGES
ORDER SAMPLES

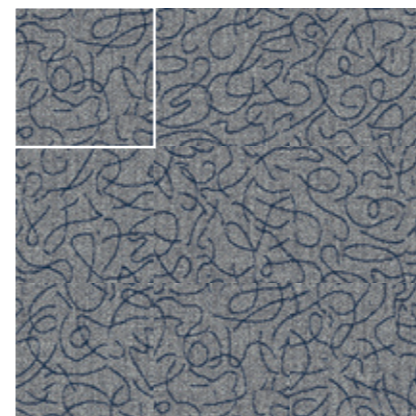


PRODUCT UNSPOOLED COLOR GRAPHITE INSTALLED MONOLITHIC

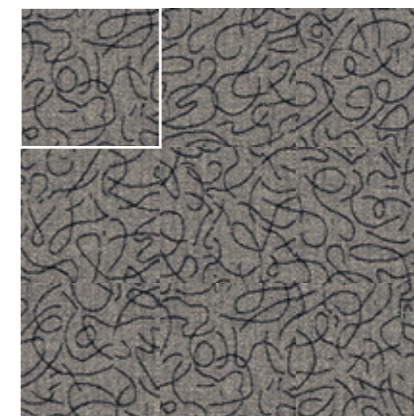
Unspooled

Unspooled draws inspiration from the naive visual motifs of the late 20th-Century, boasting an organic scribble design.

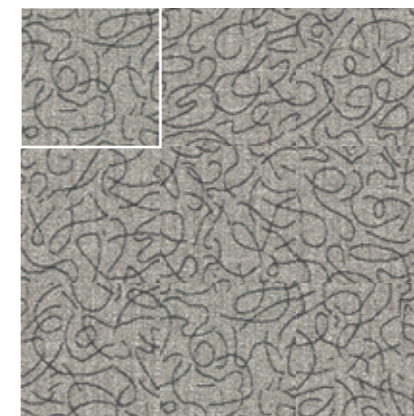
Color Range



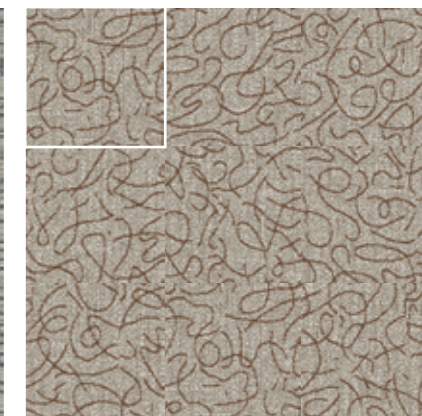
108197 PEWTER



108198 GRAPHITE



108199 OYSTER



108200 OATMEAL

Specifications

Modular, 50 cm x 50 cm	14106
Yarn Manufacturer	Aquafil
Yarn System	100% Recycled Content Nylon
Dye Method	100% Solution Dyed
Construction	Engaged Tufted Pattern Loop
Preservative Protection	Intersept®
Soil/Stain Protection	Protekt2®
Pile Thickness	0.175 in, 4.4 mm
Pile Density	6,789 oz/yd ²
Total Recycled Content	up to 85%
Indoor Air Quality	CRI Green Label Plus #GLP0820

Installation Method



MONOLITHIC



BROWSE IMAGES
ORDER SAMPLES

View the full product specification on interface.com

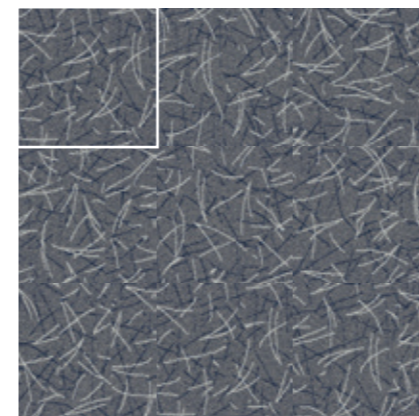


PRODUCT UNWOUND COLOR CAMEL INSTALLED MONOLITHIC
 PRODUCT THIRD SPACE 301 COLOR AMBER INSTALLED MONOLITHIC

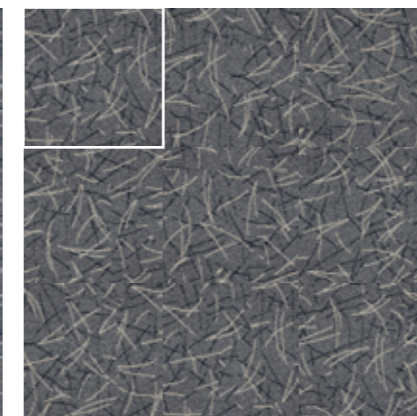
Unwound

Playfully elegant, Unwound features an illustrative fallen pine needle design in neutral tones.

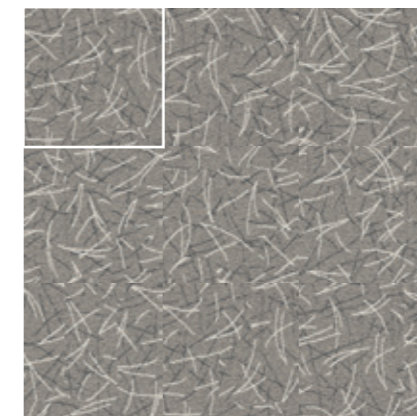
Color Range



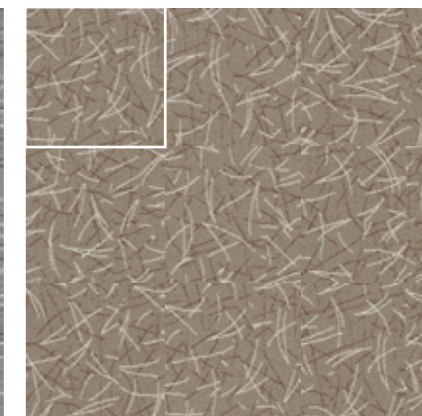
108193 TWILIGHT



108194 CARBON



108195 NICKEL



108196 CAMEL

Specifications

Modular, 50 cm x 50 cm	14104
Yarn Manufacturer	Aquafil
Yarn System	100% Recycled Content Nylon
Dye Method	100% Solution Dyed
Construction	Engaged Tufted Pattern Loop
Preservative Protection	Intersept®
Soil/ Stain Protection	Protekt ² ®
Pile Thickness	0.144 in, 3.6 mm
Pile Density	6,250 oz/yd ²
Total Recycled Content	up to 84%
Indoor Air Quality	CRI Green Label Plus #GLP0820

Installation Method



MONOLITHIC



BROWSE IMAGES
ORDER SAMPLES

View the full product specification on [interface.com](https://www.interface.com)

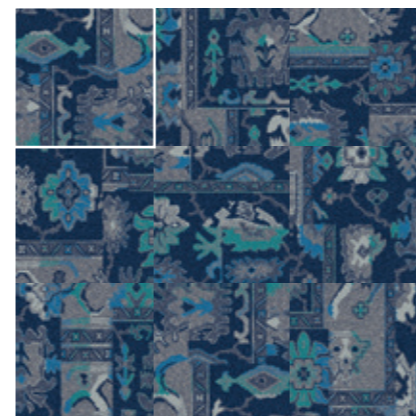


PRODUCT YESTERDAYS COLOR FLANNEL INSTALLED NON DIRECTIONAL

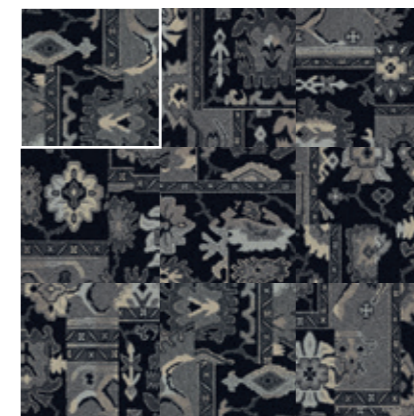
Yesterdays

Inspired by traditional Turkish rugs, Yesterdays uses unexpected color combinations to create a contemporary impression.

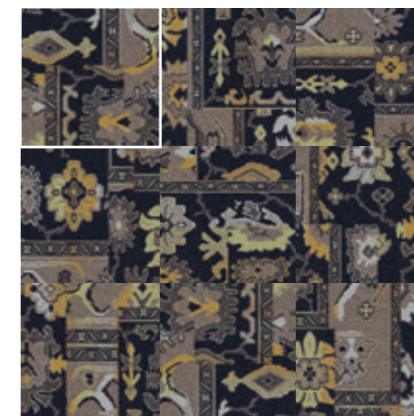
Color Range



108226 PRUSSIAN



108227 ONYX



108228 FLANNEL



108229 BRONZE

Specifications

Modular, 50 cm x 50 cm	14120
Yarn Manufacturer	Aquafil
Yarn System	100% Recycled Content Nylon
Dye Method	100% Solution Dyed
Construction	Engaged Tufted Pattern Loop
Preservative Protection	Intersept®
Soil/Stain Protection	Protekt2®
Pile Thickness	0.131 in, 3.3 mm
Pile Density	7,420 oz/yd ²
Total Recycled Content	up to 84%
Indoor Air Quality	CRI Green Label Plus #GLP0820

Installation Method



NON DIRECTIONAL



BROWSE IMAGES
ORDER SAMPLES

View the full product specification on [interface.com](https://www.interface.com)



Why Interface?



Modular Flooring

Performance and flexibility. Interface's standard backing systems set the industry standard for modular performance. Tiles stay on the floor with no upcurl, no taping and no rippling effect, yet are easy to selectively replace. Our modular carpet is easier to handle than bulky roll carpet and produces an average of just 3-4% waste compared to roll carpet's average of 14%. And it installs seamlessly with our LVT, no transition strips needed.



Help Lower Your Carbon Footprint

Like all the flooring products we sell, Interface carpet tile is carbon neutral across its full product life cycle through our third party verified Carbon Neutral Floors™ program. To find out more, visit interface.com/carbonneutral

📍 Samples

Register and order samples at interface.com. Not near a computer? You can also request samples by calling one of the numbers below.

United States
1.877.605.1500

Canada
1.866.398.3192

interface.com

Visit our website to browse all products, get full specifications, order samples, save favorites and so much more!

We have tried our very best to accurately represent product colors. However, due to the nature of printed materials, color of actual products may vary slightly. Please request a sample to see actual product color.

All product specifications reflect averages derived from product sample testing, are subject to normal manufacturing and testing tolerances and inherent pattern variances, and may be changed without notice. For more information about these and other important attributes of the product(s) described herein, including recycled content and product warranty information, please see interface.com/disclaimer.