



Printed on 50% post consumer waste (PCW) fiber manufactured using wind power.

[interface.com](https://www.interface.com)

**United States Headquarters**  
1280 West Peachtree Street NW  
Atlanta, GA 30309  
1.800.634.6032

**Canadian Headquarters**  
233 Lahr Drive  
Belleville, ON K8N 5S2  
1.800.267.2149 ext. 52128

CIM# IFS00933 02/2024



Climate change is undeniable. And reversible. Our mission is to prove it.  
**Join the #ClimateTakeBack and help create a climate fit for life.**

Open Ended

100 101 102 103 104 105

**Interface®**



## Open Ended™

---

Meet Open Ended™—a thoughtful mix of rich color and all-over texture. This sophisticated near-solid makes interior spaces more vibrant while being more practical and forgiving than solid colors.

Open Ended was skillfully designed alongside the Open Air™ Stria offering. Each Stria colorway features three accent stripes that match Open Ended colors. Together, the coordinating near-solid color of Open Ended and the subtle color of Stria expand the possibilities for your floor. As foundational patterns and textures, Open Ended & Stria also coordinate with other Open Air styles, Third Space, and related lines to give you a cohesive and comprehensive solution for your space.

No stranger to innovation, Interface produces carpet tiles with the lowest carbon footprint in the commercial flooring industry—before any offsets. And like all Interface products, Open Ended is third-party verified carbon neutral across the full product life cycle through our Carbon Neutral Floors™ program.







## Open Ended™ Color Range



103172 OLIVE



103173 WILLOW



103174 PINE



103175 SPRUCE



103176 TURQUOISE



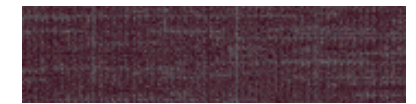
103177 GULF



103178 INDIGO



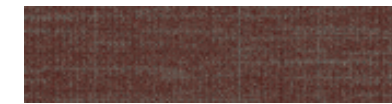
103179 LAPIS



103180 BORDEAUX



103181 AMETHYST



103182 COPPER



103183 CAYENNE



103184 BRICK



103185 CANYON



103186 HICKORY



103187 CURRY

## Specifications

Modular, 25 cm x 1 m	13140
Yarn Manufacturer	Aquafil
Yarn System	100% Recycled Content Nylon
Dye Method	100% Solution Dyed
Construction	Tufted Textured Loop
Preservative Protection	Intersept®
Soil/Stain Protection	Protekt <sup>2</sup> ™
Pile Thickness	0.10 in, 2.6 mm
Pile Density	7,615 oz/yd <sup>3</sup>
Total Recycled Content	Up to 84%
Indoor Air Quality	CRI Green Label Plus #GLP0820

*View the full product specification on [interface.com](https://www.interface.com)*

## Installation Methods



ASHLAR



HERRINGBONE



**BROWSE IMAGES**  
**ORDER SAMPLES**





[interface.com](https://www.interface.com)

**PRODUCT** OPEN AIR 410 STRIA **COLOR** 103254 CHARCOAL  
**PRODUCT** OPEN ENDED **COLORS** 103176 TURQUOISE, 103182 COPPER **INSTALLED** ASHLAR



**PRODUCT** OPEN AIR 418 STRIA **COLOR** 103289 MIST **INSTALLED** MONOLITHIC  
**PRODUCT** OPEN ENDED **COLOR** 103177 GULF **INSTALLED** ASHLAR



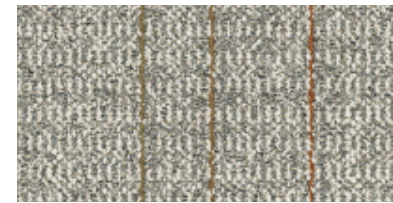
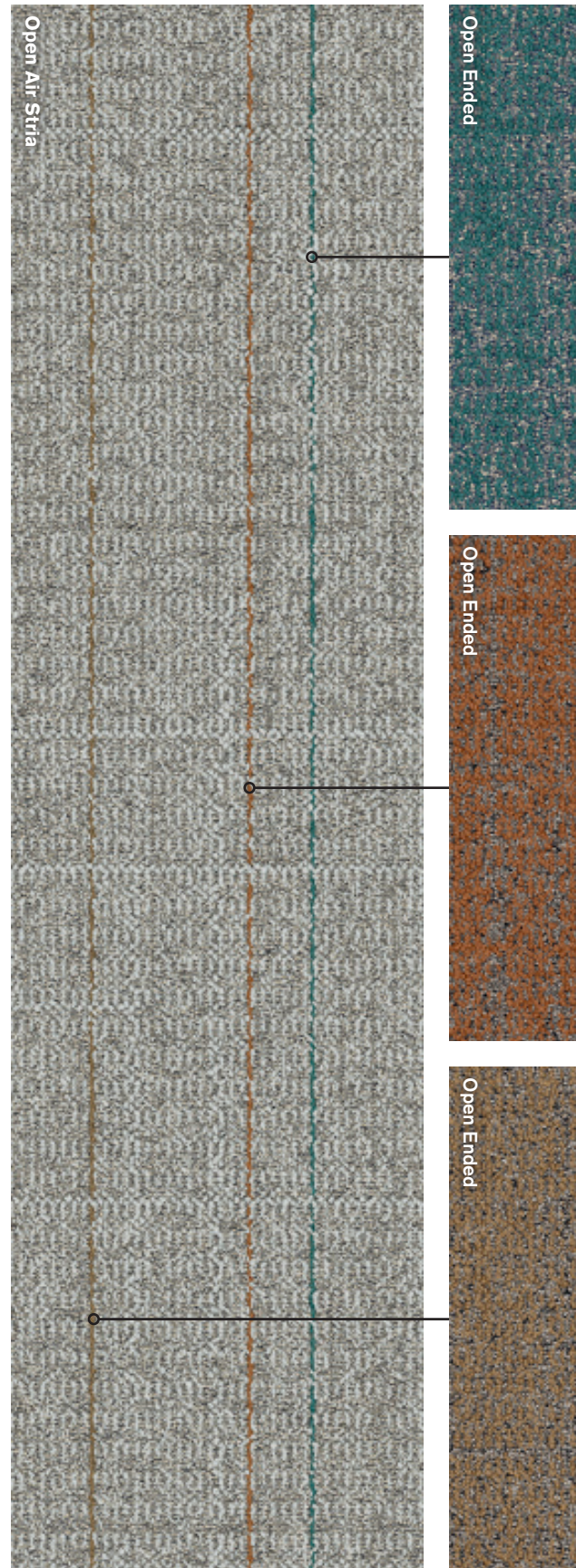
# Open Air Stria & Open Ended

Expand your design possibilities with these thoughtful companions.

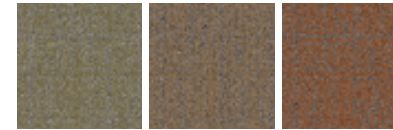
Grounded in complementary textures, you can pair any Stria style with Open Ended to emphasize wayfinding, define spaces, or simply add a colorful pop to an otherwise understated floor.

Each colorway in Open Air Stria incorporates 3 subtle accent stripes that match an Open Ended color, giving you multiple options to coordinate with other finishes in your space.

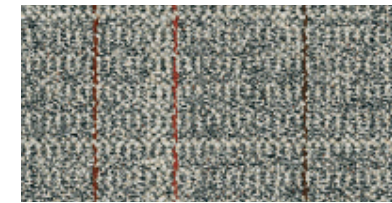
Together, Open Air Stria & Open Ended offer a flooring solution that understands your design needs and delivers a nuanced approach to style and performance.



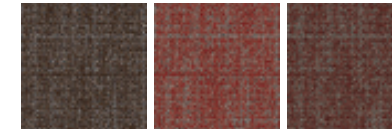
Open Air 401 Stria Shell



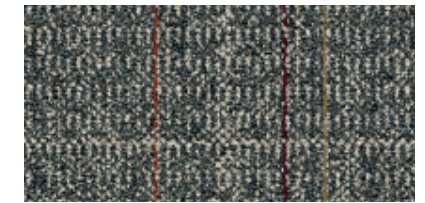
Open Ended Willow, Curry, Canyon



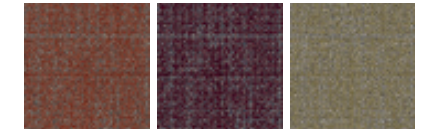
Open Air 401 Stria Natural



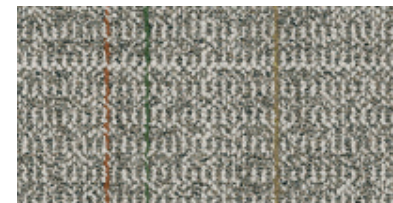
Open Ended Hickory, Cayenne, Copper



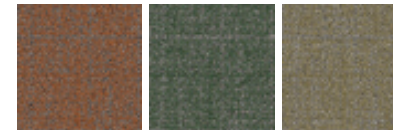
Open Air 401 Stria Granite



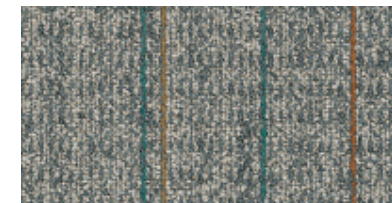
Open Ended Brick, Bordeaux, Willow



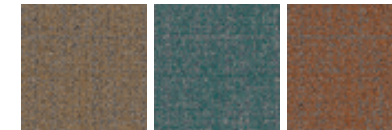
Open Air 401 Stria Oat



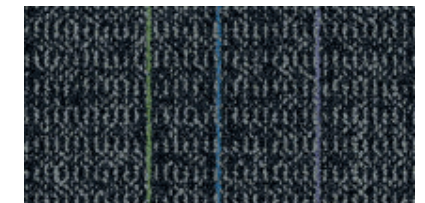
Open Ended Canyon, Spruce, Willow



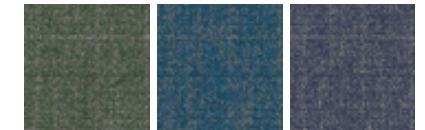
Open Air 401 Stria Nickel



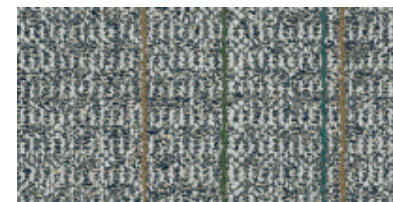
Open Ended Curry, Gulf, Canyon



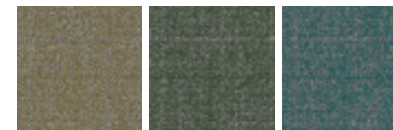
Open Air 401 Stria Iron



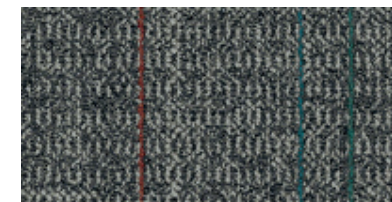
Open Ended Spruce, Lapis, Amethyst



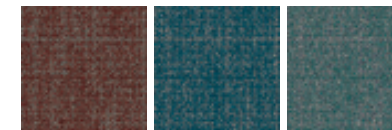
Open Air 401 Stria Mist



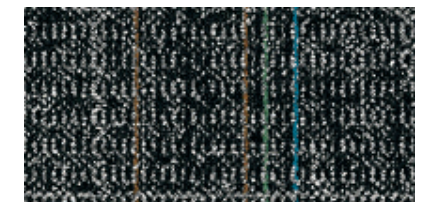
Open Ended Willow, Spruce, Gulf



Open Air 401 Stria Charcoal



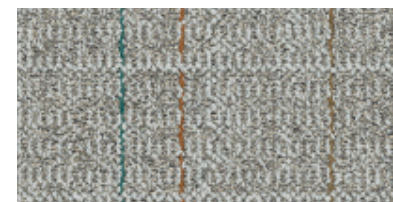
Open Ended Copper, Turquoise, Gulf



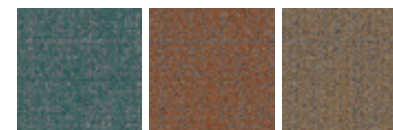
Open Air 401 Stria Black



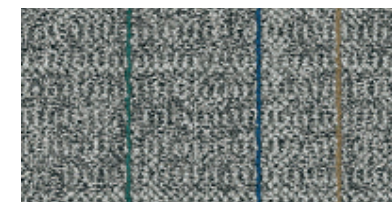
Open Ended Hickory, Pine, Turquoise



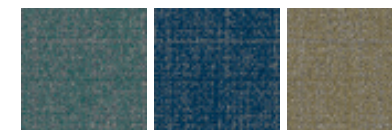
Open Air 401 Stria Linen



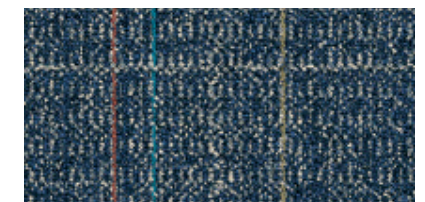
Open Ended Gulf, Canyon, Curry



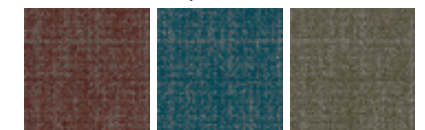
Open Air 401 Stria Flannel



Open Ended Gulf, Indigo, Willow



Open Air 401 Stria Navy



Open Ended Copper, Turquoise, Olive



## Why Our Modular Flooring?



### Modular Flooring

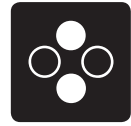
#### *Performance and flexibility.*

Interface's standard backing systems set the industry standard for modular performance. Tiles stay on the floor with no upcurl, no taping and no rippling effect, yet are easy to selectively replace. Our modular carpet is easier to handle than bulky roll carpet and produces an average of just 3-4% waste compared to roll carpet's average of 14%. And it installs seamlessly with our LVT, no transition strips needed.



### TacTiles™

*No glue installation.* Our revolutionary TacTiles installation system eliminates the need for glue, adhering tiles securely together to form a floor that "floats" for greater flexibility, easier replacement and long-term performance. The result? Less mess, less waste and virtually no VOCs, not to mention an environmental footprint that is over 90% lower than that of traditional glue adhesives. TacTiles are approved for use on GlasBac™, CQuest™GB, CQuest™Bio and CQuest™BioX.



### Intersept®

*Mold protection.* Our proprietary preservative, Intersept, protects our modular carpet against mold growth and odor-causing bacteria—guaranteed. Intersept treated carpet, with proper maintenance, shows no mold or bacterial growth when tested per the ASTM E2471 Standard Test Method. Intersept is EPA approved for safe use in carpet, water insoluble and contains no halogens, heavy metals, phenols or formaldehyde. Intersept is standard in Interface carpet tile products backed with GlasBac, CQuestGB, ReadyBac™ and CushionBac Renew™.



### ReEntry™

*Recyclable.* Through our ReEntry program we reclaim and recycle our carpet tile and Sound Choice™ LVT. ReEntry is the only third party certified recycling system among North American flooring manufacturers.



### Sustainability Transparency

Transparency and certified sustainability leadership come standard on Interface products. We enlist outside partners to help us evaluate the entire product life cycle and reduce the environmental and human health impact of our flooring. And, carpet products made in our US facilities are made with 99% renewable energy.



### Help Lower Your Carbon Footprint

Like all the flooring products we sell, Interface carpet tile is carbon neutral across its full product life cycle through our third party verified Carbon Neutral Floors™ program. To find out more, visit [interface.com/carbonneutral](http://interface.com/carbonneutral)



**Environmental Product Declaration (EPD)** – A statement of product ingredients and environmental impacts over the entire life cycle of a product. A comprehensive life cycle assessment (LCA) is performed to ISO standards to develop an EPD, after which both the EPD and LCA must be third party verified.



**Health Product Declaration (HPD)** – A transparency tool for evaluating whether a product supports Green Chemistry. As part of our work on Health and Materials, Interface continuously reduces the environmental and health impacts of our products through elimination of materials of concern.



**CRI Green Label Plus** – An independent testing program that identifies carpet and adhesives with very low emissions of VOCs to help improve indoor air quality.



**NSF 140 Sustainable Carpet Assessment** – The only carpet sustainability standard in North America that evaluates the environmental impact of carpet for its entire life cycle.

### 📍 Samples

Register and order samples at [interface.com](http://interface.com). Not near a computer? You can also request samples by calling one of the numbers below.

United States  
1.877.605.1500

Canada  
1.866.398.3192

### [interface.com](http://interface.com)

Do more on [interface.com](http://interface.com)

- Browse products and order samples
- Save and share favorites
- See images of products in a variety of room scenes
- Browse floor designs, change colors, upload your own image, download and share
- Get full specifications, sustainability certifications and more
- Check order status and inventory availability
- Sign up to get the latest information on Interface products and news

### InterCircle Sample Return

Help us close the loop on the carpet sampling process. Through our InterCircle Sample Return program, sample materials stay out of the landfill and are re-used as samples until it is time to recycle them into new carpet. By reducing sample production material and diverting old materials from the landfill, we can reduce our overall environmental footprint.

Call 1.877.605.1500 (U.S.) or 1.866.398.3192 (Canada) to order a sample return bag with a prepaid return label.

We have tried our very best to accurately represent product colors. However, due to the nature of printed materials, color of actual products may vary slightly. Please request a sample to see actual product color.

All product specifications reflect averages derived from product sample testing, are subject to normal manufacturing and testing tolerances and inherent pattern variances, and may be changed without notice. For more information about these and other important attributes of the product(s) described herein, including recycled content and product warranty information, please see [interface.com/disclaimer](http://interface.com/disclaimer).