

Open Air Collection

Open Air 401 - 423

Interface®

Open Air Collection

Smart design. Unlimited opportunities.

Open Air is an expansive platform of affordable, hard-working carpet styles designed with open spaces in mind. Available in our best-selling neutrals including classic cools and warmer hues, Open Air products integrate effortlessly with the Interface system of solutions to elevate any space. The biggest advantage of this in-demand collection? Innovation in both design and manufacturing allows us to create the same high-quality, high-performance carpet products you expect at one low price point.

No stranger to innovation, Interface produces carpet tiles with the lowest carbon footprint in the commercial flooring industry—before any offsets. And like all Interface products, the Open Air offering is third-party verified carbon neutral across the full product life cycle through our Carbon Neutral Floors™ program.







PRODUCT OPEN AIR 401 COLOUR STONE INSTALLED ASHLAR
 PRODUCT WORLD WOVEN WW895 COLOUR LOCH WEAVE INSTALLED ASHLAR

Open Air 401 Colour Range



9628001 BLACK



9628002 IRON



9628003 FLANNEL



9628004 CHARCOAL



9628005 NATURAL



9628006 NICKEL



9628007 GRANITE



9628008 STONE



9628009 LINEN

Specification

Style Code	9628
Product Construction	Tufted Textured Loop
Yarn System	100% Recycled Solution Dyed Nylon
Machine Gauge	1/12
Pile Thickness	2.5mm (± 0.5mm)
Total Thickness	6.0mm (± 0.5mm)
Tile Size	25 x 100cm
Area of Use	Commercial - Heavy Use
Lifetime Antimicrobial	Intersept®
Soil/Stain Protection	Protekt2®

View the full product specification on [interface.com](https://www.interface.com)

Installation Methods



ASHLAR



HERRINGBONE

Open Air 402 Colour Range



9624001 BLACK



9624002 IRON



9624003 FLANNEL



9624004 CHARCOAL



9624005 NATURAL



9624006 NICKEL



9624007 GRANITE



9624008 STONE



9624009 LINEN



Specification

Style Code	9624
Product Construction	Tufted Textured Loop
Yarn System	100% Recycled Solution Dyed Nylon
Machine Gauge	1/12
Pile Thickness	2.5mm (± 0.5mm)
Total Thickness	6.0mm (± 0.5mm)
Tile Size	25 x 100cm
Area of Use	Commercial - Heavy Use
Lifetime Antimicrobial	Intersept®
Soil/Stain Protection	Protekt2®

View the full product specification on [interface.com](https://www.interface.com)

Installation Methods



ASHLAR



HERRINGBONE

PRODUCT OPEN AIR 402 COLOURS GRANITE & STONE INSTALLED ASHLAR



PRODUCT OPEN AIR 403 COLOURS IRON & FLANNEL INSTALLED NON DIRECTIONAL

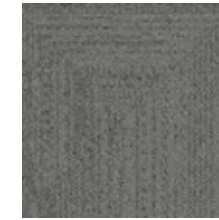
Open Air 403 Colour Range



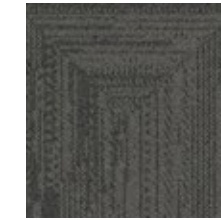
9626001 BLACK



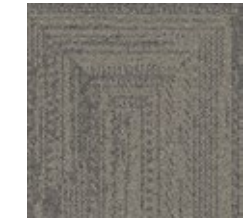
9626002 IRON



9626003 FLANNEL



9626004 CHARCOAL



9626005 NATURAL



9626006 NICKEL



9626007 GRANITE



9626008 STONE



9626009 LINEN

Specification

Style Code	9626
Product Construction	Tufted Textured Loop
Yarn System	100% Recycled Solution Dyed Nylon
Machine Gauge	1/12
Pile Thickness	2.5mm (± 0.5mm)
Total Thickness	6.0mm (± 0.5mm)
Tile Size	50 x 50cm
Area of Use	Commercial - Heavy Use
Lifetime Antimicrobial	Intersept®
Soil/Stain Protection	Protekt ²⁸

View the full product specification on [interface.com](https://www.interface.com)

Installation Methods



NON DIRECTIONAL

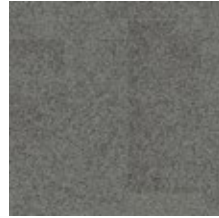
Open Air 404 Colour Range



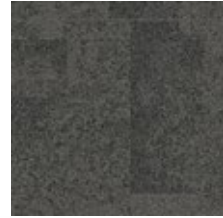
9625001 BLACK



9625002 IRON



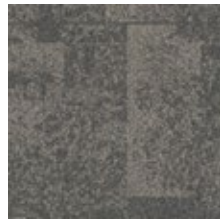
9625003 FLANNEL



9625004 CHARCOAL



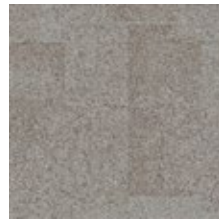
9625005 NATURAL



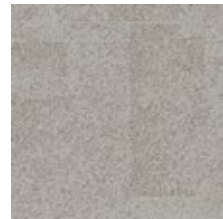
9625006 NICKEL



9625007 GRANITE



9625008 STONE



9625009 LINEN

Specification

Style Code	9625
Product Construction	Tufted Textured Loop
Yarn System	100% Recycled Solution Dyed Nylon
Machine Gauge	1/12
Pile Thickness	2.5mm (± 0.5mm)
Total Thickness	6.0mm (± 0.5mm)
Tile Size	50 x 50cm
Area of Use	Commercial - Heavy Use
Lifetime Antimicrobial	Intersept®
Soil/Stain Protection	Protekt ² ®

View the full product specification on [interface.com](https://www.interface.com)

Installation Methods



NON DIRECTIONAL

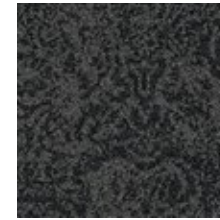


PRODUCT OPEN AIR 404 COLOUR NICKEL INSTALLED NON DIRECTIONAL



PRODUCT OPEN AIR 405 COLOUR CHARCOAL INSTALLED NON DIRECTIONAL

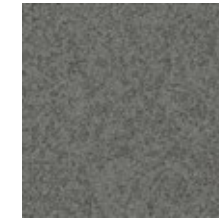
Open Air 405 Colour Range



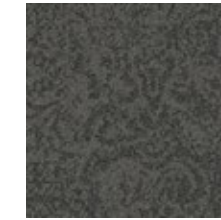
9629001 BLACK



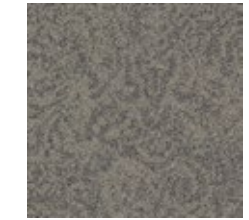
9629002 IRON



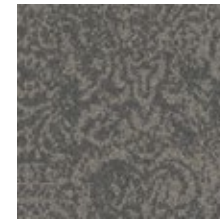
9629003 FLANNEL



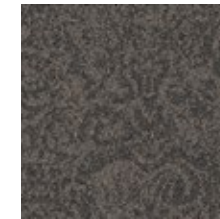
9629004 CHARCOAL



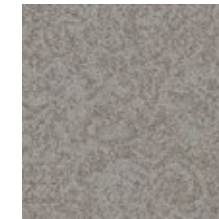
9629005 NATURAL



9629006 NICKEL



9629007 GRANITE



9629008 STONE



9629009 LINEN

Specification

Style Code	9629
Product Construction	Tufted Textured Loop
Yarn System	100% Recycled Solution Dyed Nylon
Machine Gauge	1/12
Pile Thickness	2.5mm (± 0.5mm)
Total Thickness	6.0mm (± 0.5mm)
Tile Size	50 x 50cm
Area of Use	Commercial - Heavy Use
Lifetime Antimicrobial	Intersept®
Soil/Stain Protection	Protekt ² ®

View the full product specification on [interface.com](https://www.interface.com)

Installation Methods



NON DIRECTIONAL

Open Air 407 Colour Range



9677001 BLACK



9677002 IRON



9677003 FLANNEL



9677004 CHARCOAL



9677005 NATURAL



9677006 NICKEL



9677007 GRANITE



9677008 STONE



9677009 LINEN

Specification

Style Code	9677
Product Construction	Tufted Textured Loop
Yarn System	100% Recycled Solution Dyed Nylon
Machine Gauge	1/12
Pile Thickness	2.5mm (± 0.5mm)
Total Thickness	6.0mm (± 0.5mm)
Tile Size	25 x 100cm
Area of Use	Commercial - Heavy Use
Lifetime Antimicrobial	Intersept®
Soil/Stain Protection	Protekt2®

View the full product specification on [interface.com](https://www.interface.com)

Installation Methods



ASHLAR



HERRINGBONE



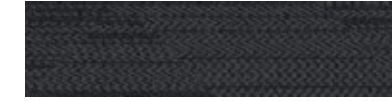
PRODUCT OPEN AIR 407 COLOUR BLACK INSTALLED HERRINGBONE



Open Air 408 Colour Range



9678001 BLACK



9678002 IRON



9678003 FLANNEL



9678004 CHARCOAL



9678005 NATURAL



9678006 NICKEL



9678007 GRANITE



9678008 STONE



9678009 LINEN

Specification

Style Code	9678
Product Construction	Tufted Textured Loop
Yarn System	100% Recycled Solution Dyed Nylon
Machine Gauge	1/12
Pile Thickness	2.5mm (± 0.5mm)
Total Thickness	6.0mm (± 0.5mm)
Tile Size	25 x 100cm
Area of Use	Commercial - Heavy Use
Lifetime Antimicrobial	Intersept®
Soil/Stain Protection	Protekt2®

View the full product specification on [interface.com](https://www.interface.com)

Installation Methods



ASHLAR



HERRINGBONE

PRODUCT OPEN AIR 408 COLOUR BLACK INSTALLED ASHLAR

Open Air 409 Colour Range



9679001 BLACK



9679002 IRON



9679003 FLANNEL



9679004 CHARCOAL



9679005 NATURAL



9679006 NICKEL



9679007 GRANITE



9679008 STONE



9679009 LINEN



Specification

Style Code	9679
Product Construction	Tufted Textured Loop
Yarn System	100% Recycled Solution Dyed Nylon
Machine Gauge	1/12
Pile Thickness	2.5mm (± 0.5mm)
Total Thickness	6.0mm (± 0.5mm)
Tile Size	25 x100cm
Area of Use	Commercial - Heavy Use
Lifetime Antimicrobial	Intersept®
Soil/Stain Protection	Protekt2®

View the full product specification on [interface.com](https://www.interface.com)

Installation Methods



ASHLAR



HERRINGBONE

PRODUCT OPEN AIR 409 COLOUR NATURAL INSTALLED ASHLAR



CARPET PRODUCT OPEN AIR 410 **COLOUR** FLANNEL **INSTALLED** ASHLAR
LVT PRODUCT STUDIO SET **COLOUR** PEWTER & SILVERLIGHT **INSTALLED** ASHLAR

Open Air 410 Colour Range



9680001 BLACK



9680002 IRON



9680003 FLANNEL



9680004 CHARCOAL



9680005 NATURAL



9680006 NICKEL



9680007 GRANITE



9680008 STONE



9680009 LINEN

Specification

Style Code	9680
Product Construction	Tufted Textured Loop
Yarn System	100% Recycled Solution Dyed Nylon
Machine Gauge	1/12
Pile Thickness	2.5mm (± 0.5mm)
Total Thickness	6.0mm (± 0.5mm)
Tile Size	25 x100cm
Area of Use	Commercial - Heavy Use
Lifetime Antimicrobial	Intersept®
Soil/Stain Protection	Protekt2®

View the full product specification on [interface.com](https://www.interface.com)

Installation Methods



Open Air 411 Colour Range



9681001 BLACK



9681002 IRON



9681003 FLANNEL



9681004 CHARCOAL



9681005 NATURAL



9681006 NICKEL



9681007 GRANITE



9681008 STONE



9681009 LINEN

Specification

Style Code	9681
Product Construction	Tufted Textured Loop
Yarn System	100% Recycled Solution Dyed Nylon
Machine Gauge	1/12
Pile Thickness	2.5mm (± 0.5mm)
Total Thickness	6.0mm (± 0.5mm)
Tile Size	25 x100cm
Area of Use	Commercial - Heavy Use
Lifetime Antimicrobial	Intersept®
Soil/Stain Protection	Protekt2®

View the full product specification on [interface.com](https://www.interface.com)

Installation Methods



ASHLAR



HERRINGBONE

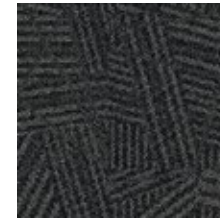


PRODUCT OPEN AIR 411 COLOUR FLANNEL INSTALLED ASHLAR
 PRODUCT ON LINE COLOUR LIME INSTALLED ASHLAR

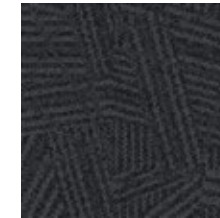


PRODUCT OPEN AIR 412 COLOUR BLACK INSTALLED MONOLITHIC

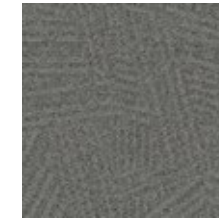
Open Air 412 Colour Range



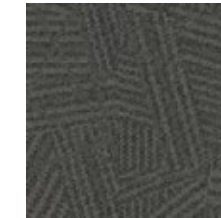
9682001 BLACK



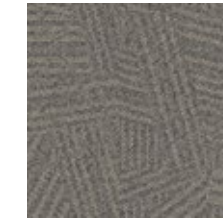
9682002 IRON



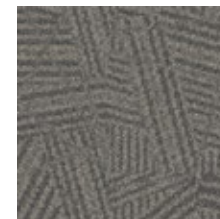
9682003 FLANNEL



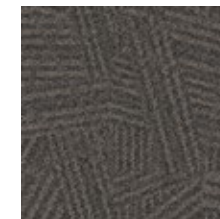
9682004 CHARCOAL



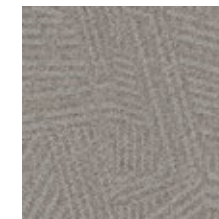
9682005 NATURAL



9682006 NICKEL



9682007 GRANITE



9682008 STONE



9682009 LINEN

Specification

Style Code	9682
Product Construction	Tufted Textured Loop
Yarn System	100% Recycled Solution Dyed Nylon
Machine Gauge	1/12
Pile Thickness	2.5mm (± 0.5mm)
Total Thickness	6.0mm (± 0.5mm)
Tile Size	50 x 50cm
Area of Use	Commercial - Heavy Use
Lifetime Antimicrobial	Intersept®
Soil/Stain Protection	Protekt ² ®

View the full product specification on [interface.com](https://www.interface.com)

Installation Methods



MONOLITHIC

Open Air 413 Colour Range



9683001 BLACK



9683002 IRON



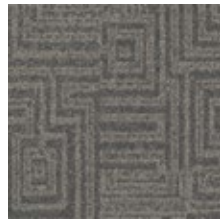
9683003 FLANNEL



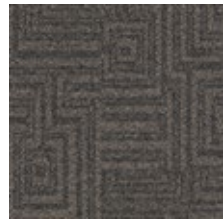
9683004 CHARCOAL



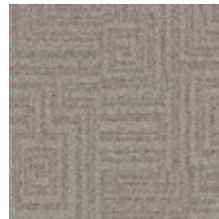
9683005 NATURAL



9683006 NICKEL



9683007 GRANITE



9683008 STONE



9683009 LINEN

Specification

Style Code	9683
Product Construction	Tufted Textured Loop
Yarn System	100% Recycled Solution Dyed Nylon
Machine Gauge	1/12
Pile Thickness	2.5mm (± 0.5mm)
Total Thickness	6.0mm (± 0.5mm)
Tile Size	50 x 50cm
Area of Use	Commercial - Heavy Use
Lifetime Antimicrobial	Intersept®
Soil/Stain Protection	Protekt®

View the full product specification on interface.com

Installation Methods



CARPET PRODUCT OPEN AIR 413 COLOUR LINEN INSTALLED MONOLITHIC
LVT PRODUCT LEVEL SET NATURAL WOODGRAINS COLOUR WASHED WHEAT INSTALLED ASHLAR



PRODUCT OPEN AIR 414 COLOUR NATURAL INSTALLED NON DIRECTIONAL
 PRODUCT AE317 COLOUR PERSIMMON INSTALLED ASHLAR

Open Air 414 Colour Range



9684001 BLACK



9684002 IRON



9684003 FLANNEL



9684004 CHARCOAL



9684005 NATURAL



9684006 NICKEL



9684007 GRANITE



9684008 STONE



9684009 LINEN

Specification

Style Code	9684
Product Construction	Tufted Textured Loop
Yarn System	100% Recycled Solution Dyed Nylon
Machine Gauge	1/12
Pile Thickness	2.5mm (± 0.5mm)
Total Thickness	6.0mm (± 0.5mm)
Tile Size	50 x 50cm
Area of Use	Commercial - Heavy Use
Lifetime Antimicrobial	Intersept®
Soil/Stain Protection	Protekt®

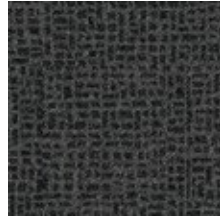
View the full product specification on [interface.com](https://www.interface.com)

Installation Methods



NON DIRECTIONAL

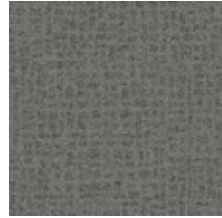
Open Air 415 Colour Range



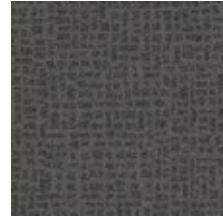
9685001 BLACK



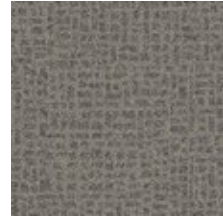
9685002 IRON



9685003 FLANNEL



9685004 CHARCOAL



9685005 NATURAL



9685006 NICKEL



9685007 GRANITE



9685008 STONE



9685009 LINEN

Specification

Style Code	9685
Product Construction	Tufted Textured Loop
Yarn System	100% Recycled Solution Dyed Nylon
Machine Gauge	1/12
Pile Thickness	2.5mm (± 0.5mm)
Total Thickness	6.0mm (± 0.5mm)
Tile Size	50 x 50cm
Area of Use	Commercial - Heavy Use
Lifetime Antimicrobial	Intersept®
Soil/Stain Protection	Protekt2®

View the full product specification on [interface.com](https://www.interface.com)

Installation Methods



CARPET PRODUCT OPEN AIR 415 COLOUR LINEN INSTALLED MONOLITHIC
 LVT PRODUCT LEVEL SET TEXTURED STONES COLOUR COOL POLISHED CEMENT INSTALLED MONOLITHIC



PRODUCT OPEN AIR 416 COLOUR LINEN INSTALLED NON DIRECTIONAL

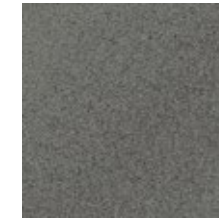
Open Air 416 Colour Range



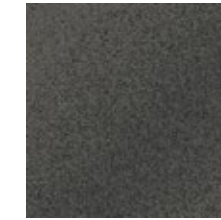
9686001 BLACK



9686002 IRON



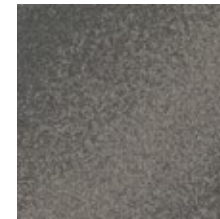
9686003 FLANNEL



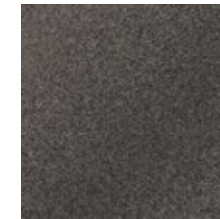
9686004 CHARCOAL



9686005 NATURAL



9686006 NICKEL



9686007 GRANITE



9686008 STONE



9686009 LINEN

Shared elements create visual connection and pattern progression from **Open Air 416** to **Open Air 417**.

Specification

Style Code	9686
Product Construction	Tufted Textured Loop
Yarn System	100% Recycled Solution Dyed Nylon
Machine Gauge	1/12
Pile Thickness	2.5mm (± 0.5mm)
Total Thickness	6.0mm (± 0.5mm)
Tile Size	50 x 50cm
Area of Use	Commercial - Heavy Use
Lifetime Antimicrobial	Intersept®
Soil/Stain Protection	Protekt ² ®

View the full product specification on [interface.com](https://www.interface.com)

Installation Methods



NON DIRECTIONAL

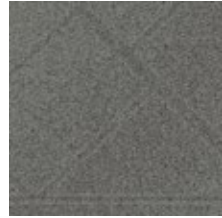
Open Air 417 Colour Range



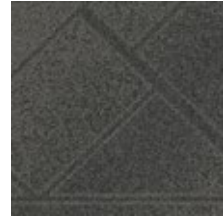
9690001 BLACK



9690002 IRON



9690003 FLANNEL



9690004 CHARCOAL



9690005 NATURAL



9690006 NICKEL



9690007 GRANITE



9690008 STONE



9690009 LINEN



Shared elements create visual connection and pattern progression from **Open Air 416** to **Open Air 417**.

Specification

Style Code	9690
Product Construction	Tufted Textured Loop
Yarn System	100% Recycled Solution Dyed Nylon
Machine Gauge	1/12
Pile Thickness	2.5mm (± 0.5mm)
Total Thickness	6.0mm (± 0.5mm)
Tile Size	50 x 50cm
Area of Use	Commercial - Heavy Use
Lifetime Antimicrobial	Intersept®
Soil/Stain Protection	Protek2®

View the full product specification on [interface.com](https://www.interface.com)

Installation Methods



NON DIRECTIONAL



PRODUCT OPEN AIR 417 COLOURS BLACK & FLANNEL INSTALLED NON DIRECTIONAL

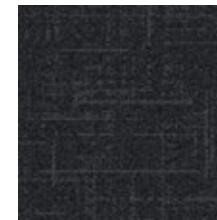


PRODUCT OPEN AIR 418 COLOUR GRANITE INSTALLED MONOLITHIC

Open Air 418 Colour Range



9691001 BLACK



9691002 IRON



9691003 FLANNEL



9691004 CHARCOAL



9691005 NATURAL



9691006 NICKEL



9691007 GRANITE



9691008 STONE



9691009 LINEN

Specification

Style Code	9691
Product Construction	Tufted Textured Loop
Yarn System	100% Recycled Solution Dyed Nylon
Machine Gauge	1/12
Pile Thickness	2.5mm (± 0.5mm)
Total Thickness	6.0mm (± 0.5mm)
Tile Size	50 x 50cm
Area of Use	Commercial - Heavy Use
Lifetime Antimicrobial	Intersept®
Soil/Stain Protection	Protekt ² ®

View the full product specification on [interface.com](https://www.interface.com)

Installation Methods



MONOLITHIC

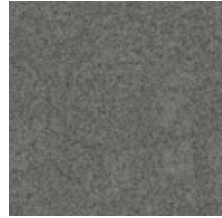
Open Air 419 Colour Range



9692001 BLACK



9692002 IRON



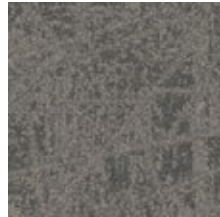
9692003 FLANNEL



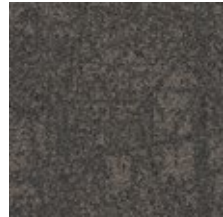
9692004 CHARCOAL



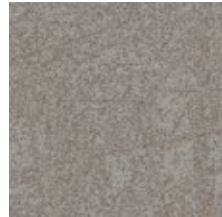
9692005 NATURAL



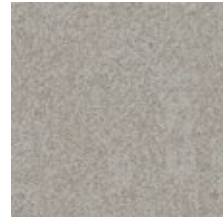
9692006 NICKEL



9692007 GRANITE



9692008 STONE



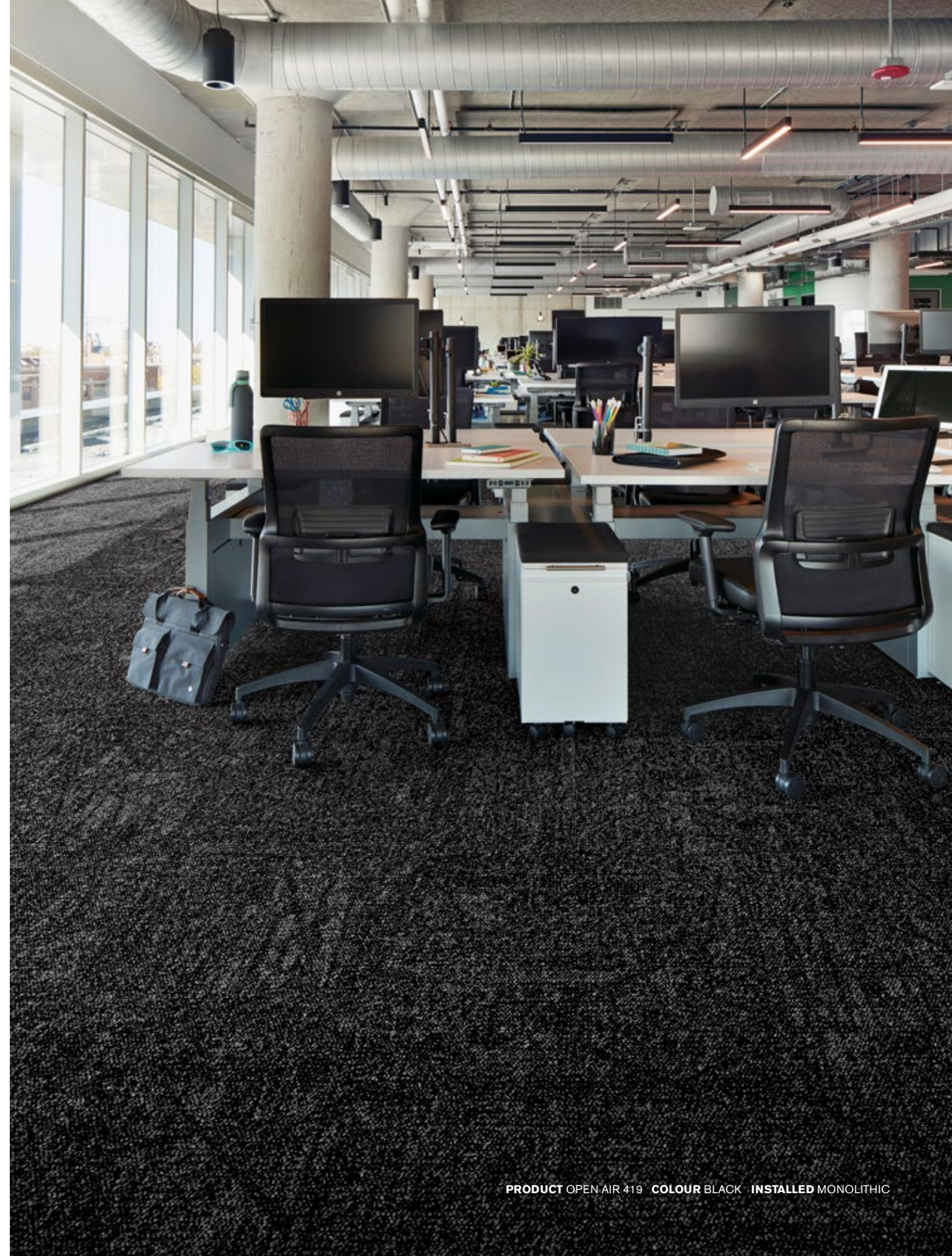
9692009 LINEN

Specification

Style Code	9692
Product Construction	Tufted Textured Loop
Yarn System	100% Recycled Solution Dyed Nylon
Machine Gauge	1/12
Pile Thickness	2.5mm (± 0.5mm)
Total Thickness	6.0mm (± 0.5mm)
Tile Size	50 x 50cm
Area of Use	Commercial - Heavy Use
Lifetime Antimicrobial	Intersept®
Soil/Stain Protection	Protek2®

View the full product specification on interface.com

Installation Methods



PRODUCT OPEN AIR 419 COLOUR BLACK INSTALLED MONOLITHIC

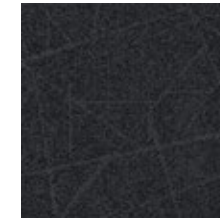


PRODUCT OPEN AIR 420 COLOUR NICKEL INSTALLED MONOLITHIC

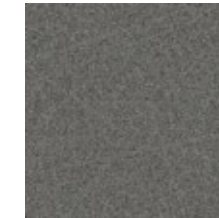
Open Air 420 Colour Range



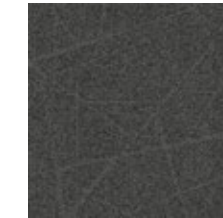
9693001 BLACK



9693002 IRON



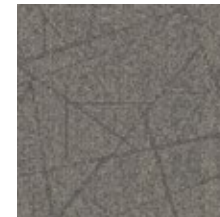
9693003 FLANNEL



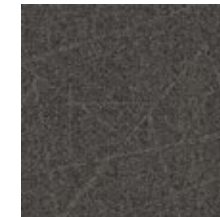
9693004 CHARCOAL



9693005 NATURAL



9693006 NICKEL



9693007 GRANITE



9693008 STONE



9693009 LINEN

Specification

Style Code	9693
Product Construction	Tufted Textured Loop
Yarn System	100% Recycled Solution Dyed Nylon
Machine Gauge	1/12
Pile Thickness	2.5mm (± 0.5mm)
Total Thickness	6.0mm (± 0.5mm)
Tile Size	50 x 50cm
Area of Use	Commercial - Heavy Use
Lifetime Antimicrobial	Intersept®
Soil/Stain Protection	Protekt ² ®

View the full product specification on [interface.com](https://www.interface.com)

Installation Methods



MONOLITHIC

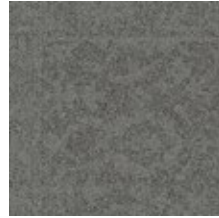
Open Air 421 Colour Range



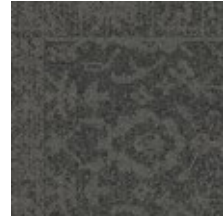
9694001 BLACK



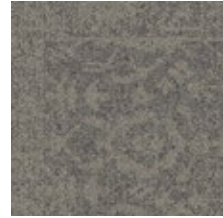
9694002 IRON



9694003 FLANNEL



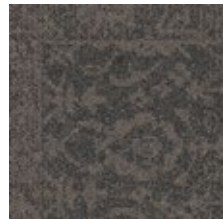
9694004 CHARCOAL



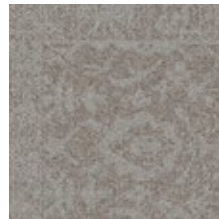
9694005 NATURAL



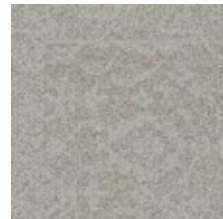
9694006 NICKEL



9694007 GRANITE



9694008 STONE



9694009 LINEN



Specification

Style Code	9694
Product Construction	Tufted Textured Loop
Yarn System	100% Recycled Solution Dyed Nylon
Machine Gauge	1/12
Pile Thickness	2.5mm (± 0.5mm)
Total Thickness	6.0mm (± 0.5mm)
Tile Size	50 x 50cm
Area of Use	Commercial - Heavy Use
Lifetime Antimicrobial	Intersept®
Soil/Stain Protection	Protek2®

View the full product specification on [interface.com](https://www.interface.com)

Installation Methods



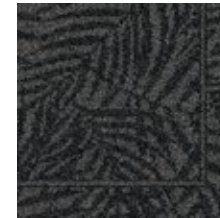
NON DIRECTIONAL

PRODUCT OPEN AIR 421 COLOUR NATURAL INSTALLED NON DIRECTIONAL
 PRODUCT OPEN AIR 401 COLOUR CHARCOAL INSTALLED ASHLAR



PRODUCT OPEN AIR 422 COLOUR FLANNEL INSTALLED NON DIRECTIONAL
 PRODUCT OPEN AIR 401 COLOUR BLACK INSTALLED ASHLAR

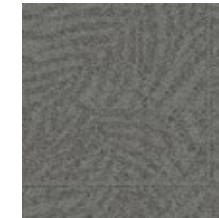
Open Air 422 Colour Range



9695001 BLACK



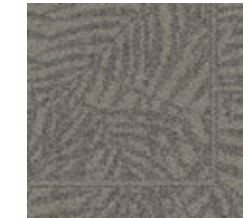
9695002 IRON



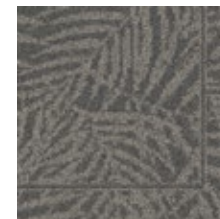
9695003 FLANNEL



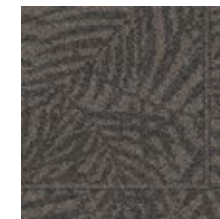
9695004 CHARCOAL



9695005 NATURAL



9695006 NICKEL



9695007 GRANITE



9695008 STONE



9695009 LINEN

Specification

Style Code	9695
Product Construction	Tufted Textured Loop
Yarn System	100% Recycled Solution Dyed Nylon
Machine Gauge	1/12
Pile Thickness	2.5mm (± 0.5mm)
Total Thickness	6.0mm (± 0.5mm)
Tile Size	50 x 50cm
Area of Use	Commercial - Heavy Use
Lifetime Antimicrobial	Intersept®
Soil/Stain Protection	Protekt2®

View the full product specification on [interface.com](https://www.interface.com)

Installation Methods



NON DIRECTIONAL

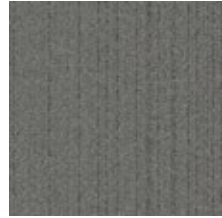
Open Air 423 Colour Range



9696001 BLACK



9696002 IRON



9696003 FLANNEL



9696004 CHARCOAL



9696005 NATURAL



9696006 NICKEL



9696007 GRANITE



9696008 STONE



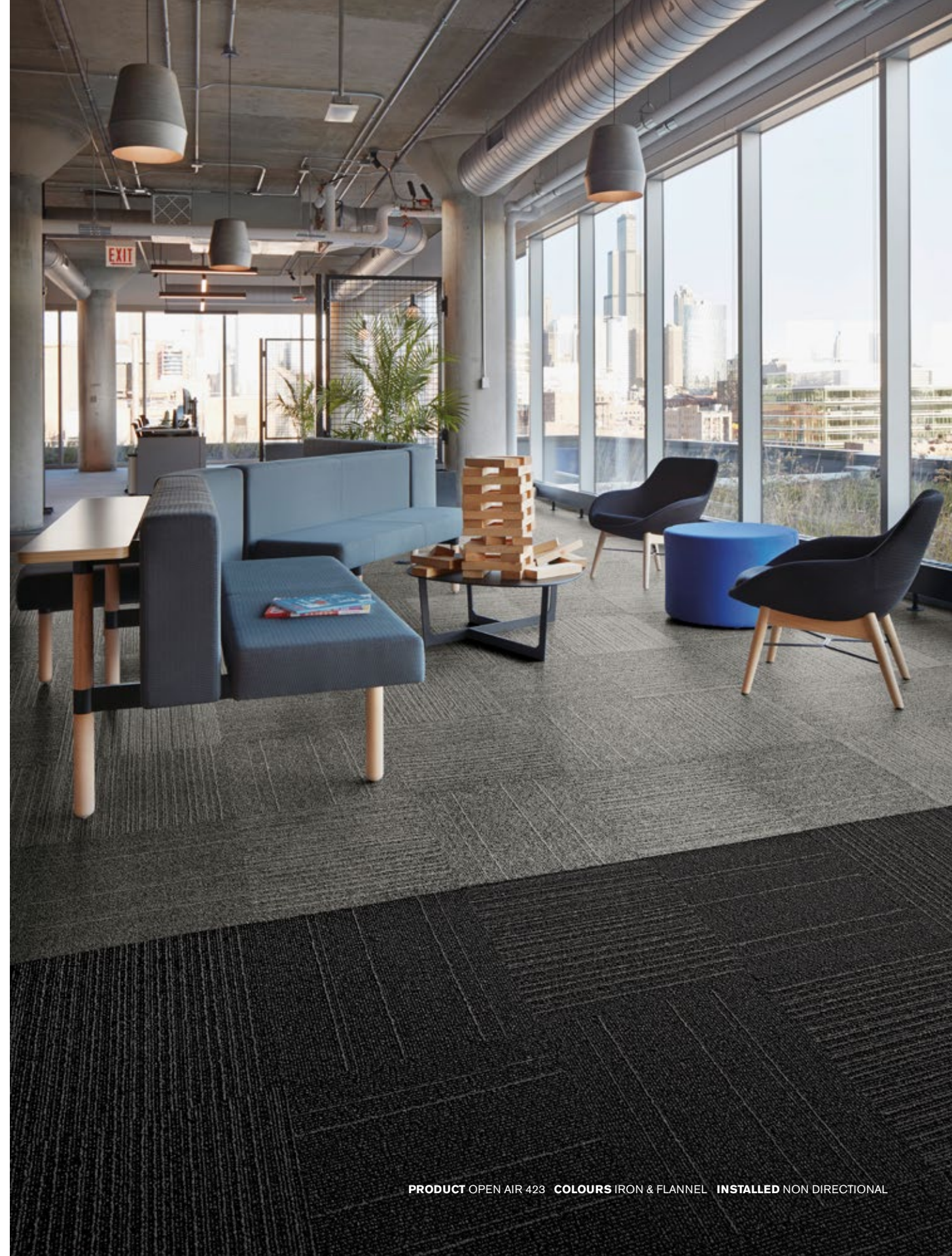
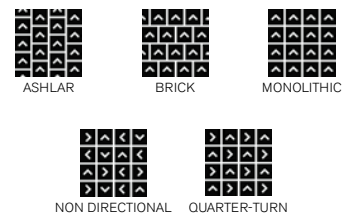
9696009 LINEN

Specification

Style Code	9696
Product Construction	Tufted Textured Loop
Yarn System	100% Recycled Solution Dyed Nylon
Machine Gauge	1/12
Pile Thickness	2.5mm (± 0.5mm)
Total Thickness	6.0mm (± 0.5mm)
Tile Size	50 x 50cm
Area of Use	Commercial - Heavy Use
Lifetime Antimicrobial	Intersept®
Soil/Stain Protection	Protekt2®

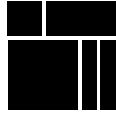
View the full product specification on [interface.com](https://www.interface.com)

Installation Methods



PRODUCT OPEN AIR 423 COLOURS IRON & FLANNEL INSTALLED NON DIRECTIONAL

Why Our Modular Flooring?



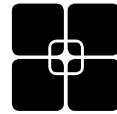
Modular Flooring

Performance and flexibility. Interface's standard backing systems set the industry standard for modular performance. Tiles stay on the floor with no upcurl, no tapping and no rippling effect, yet are easy to selectively replace. Our modular carpet is easier to handle than bulky roll carpet and produces an average of just 2-5% waste compared to roll carpet's average of 15%. And it installs seamlessly with our LVT, no transition strips needed.



ReEntry

At Interface, an *end of life solution* of our products is a reality. ReEntry is our innovative programme to reclaim materials used in our product. Taking back our product at end of life is a service we provide our customers to ensure that none of the products they use will end up in landfill. Whether it is recycling into new product or re-purposing, we see our customer's waste as an opportunity for new product life.



TacTiles®

No glue installation. Our revolutionary TacTiles installation system eliminates the need for glue, adhering tiles securely together to form a floor that "floats" for greater flexibility, easier replacement and long-term performance. The result? Less mess, less waste and virtually no VOCs, not to mention an environmental footprint that is over 90% lower than that of traditional glue adhesives.



Intersept®

Mold protection. Our proprietary preservative, Intersept, protects our modular carpet against mould growth and odour-causing bacteria—guaranteed. Intersept treated carpet, with proper maintenance, shows no mould or bacterial growth when tested as per the ASTM E2471 Standard Test Method. Intersept is EPA-approved for safe use in carpet, water insoluble and contains no halogens, heavy metals, phenols or formaldehyde.



Protekt2®

Stain protection. The life and performance of your flooring is extended with Protekt², our patented stain resistant protection. Protekt² uses advanced technology to provide a lasting barrier against permanent soiling and staining, which simplifies the cleaning process and enhances the longevity of your carpet. Protekt² is product specific, please refer to individual product specifications for details.



Health Product Declaration (HPD) –

A transparency tool for evaluating whether a product supports Green Chemistry. As part of our work on Health and Materials, Interface continuously reduces the environmental and health impacts of our products through elimination of materials of concern.



15-Year Warranty

Interface products are warranted for 15 years against excessive surface wear, edge ravel, backing separation, shrinking, stretching and static electricity even under castor chair conditions.



Local Manufacturing

We combine local responsiveness with a global experience. Being part of the same communities as our customers, we foster collaborative, committed, and productive relationships. Our carpet tiles are manufactured in Australia and China, contributing to local economies and the environment.

All Interface manufacturing facilities in the Asia Pacific region maintain registration to ISO 9001 Quality Management Systems and ISO 14001 Environmental Management Systems.

Third Party Certifications



Environmental Product Declaration (EPD)

The Environmental Product Declaration (EPD) is a third party verified environmental certification classified as Type III that quantifies and verifies the lifecycle impacts of products and goods according to the International Standards Organization (ISO) 14025, 14040, 14044 and EN 15804. EPDs help customers that are environmentally driven to evaluate the performance of a product and to make the best decision when choosing a product. Interface EPDs can be found on interface.com.



Global GreenTag GreenRate - Level A

Global GreenTag's GreenRate certification is a product rating system recognised by the Green Building Council of Australia and Green Building Council of New Zealand. Its assessment scheme aligns to the Green Star® Responsible Products program. All Interface products are certified "Level A".



Environmental Certification Scheme - Level 4

ECS-certified carpet manufacturers must adhere to a code of practice that details performance standards for raw materials, manufacturing, in-service use and end-of-life treatment. Interface flooring holds the highest grading under ECS.



NSF Certification

NSF International develops public health standards and certification programs that help protect the world's food, water, consumer products and environment. Interface carpet tile products are certified "Gold".



CRI Green Label Plus

The Carpet and Rug Institute (CRI) Green Label Plus sets higher standards for indoor air quality and ensures that customers are purchasing the very lowest emitting products on the market. Interface Carpet Tiles and TacTiles have fulfilled the requirements for this certification.



Singapore Green Building Product (SGBP)

The SGBP certification is designed to evaluate and certify building products that meet specific sustainability and environmental performance criteria. The certification scheme helps building professionals identify products that are sustainable and more carbon efficient. Interface carpet tile products are certified "Leader" and LVT products are at "Excellent" Level.



Best Practice Guidelines for PVC

Our product proudly holds the Best Environmental Practice (BEP) PVC certification, a recognition of compliance with stringent environmental and social criteria in PVC manufacturing. This certification is a key contributor to Green Star certification, aligning with the GBCA's Responsible Products Framework. Our commitment to BEP guidelines demonstrates our dedication to environmental responsibility and product excellence.

Our EPDs and certifications contribute credits towards Green Building Council's Green Star® Responsible Products program.

Green Star is the Green Building Council of Australia's sustainability rating system for the built environment. It is used to rate new and existing buildings, new fit-outs, and new precinct developments. The Green Building Council of Australia recognises Responsible Products that may contribute to a Green Star rating through its Responsible Credits.

Production specifications are subject to normal manufacturing tolerances and may be changed without notice. The visibility of joints may vary based on colour and pattern. Slight variation in colour among different production lots are normal and should be considered in the overall installation plan. We have tried our very best to accurately represent product colours. However, due to the nature of printed materials, colour of actual products may vary slightly. Please request a sample to see actual product colour. Products covered by manufacturer's written warranty only. All other warranties, including without limitation any implied warranties of merchantability or fitness for particular purpose, are hereby disclaimed. Contact your representative for written warranty information.



Carbon Neutral Floors™

www.interface.com

Australia

Interface Australia
local toll free: 1800 804 361

India

Interface India
tel: +91 76249 17934

South East Asia

Interface Asia
tel: +65 6478 1510

South Korea

Interface South Korea
tel: +82 2 555 1734

Japan

Interface Japan
tel: +81(0)3-6892-5513

Beijing

Interface China
tel: +86 10 6590 7810

Hong Kong

Interface China
tel: +852 2802 0838

Shanghai

Interface China
tel: +86 21 6340 3868



Climate change is undeniable. And reversible. Our mission is to prove it.
Join the #ClimateTakeBack and help create a climate fit for life.