

OPEN AIR

Neutrals

Interface®

Open Air™ Neutrals

Smart design. Unlimited opportunities.

Open Air™ is an expansive platform of affordable, hard-working carpet styles designed with open spaces in mind. Available in our best-selling neutrals including classic cools and warmer hues, Open Air Neutrals products integrate effortlessly with the Interface system of solutions to elevate any space.

The biggest advantage of this in-demand collection? Innovation in both design and manufacturing allows us to deliver over 20 styles that meet the high-performance you expect, at one low price point, available to ship in just 3 weeks. Take your pick.







Open Air™ 401 Color Range



106772 BLACK



106773 IRON



106774 FLANNEL



106775 CHARCOAL



106776 NATURAL



106777 NICKEL



106778 GRANITE



106779 STONE



106780 LINEN



107683 MIST



107684 NAVY



107685 EBONY



107686 OAT



107687 BROWN



107688 SHELL



107689 AMBER

Specifications

Modular, 25 cm x 1 m	16336
Yarn Manufacturer	Aquafil
Yarn System	100% Recycled Content Nylon
Dye Method	100% Solution Dyed
Construction	Tufted Textured Loop
Preservative Protection	Intersept®
Soil/Stain Protection	Protekt ² ™
Pile Thickness	0.08 in, 1.9 mm
Pile Density	8,526 oz/yd³
Total Recycled Content	68%
Indoor Air Quality	CRI Green Label Plus #GLP0820

View the full product specification on [interface.com](#)

Installation Methods



ASHLAR

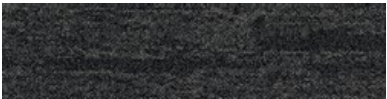


HERRINGBONE



BROWSE IMAGES
ORDER SAMPLES

Open Air™ 402 Color Range



106736 BLACK



106737 IRON



106738 FLANNEL



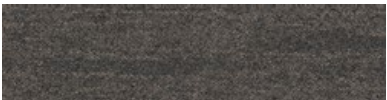
106739 CHARCOAL



106740 NATURAL



106741 NICKEL



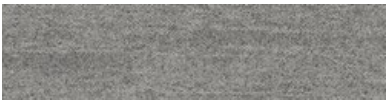
106742 GRANITE



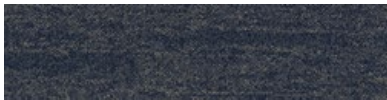
106743 STONE



106744 LINEN



107690 MIST



107691 NAVY



107692 EBONY



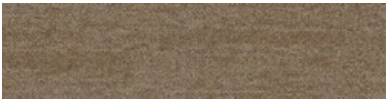
107693 OAT



107694 BROWN



107695 SHELL



107696 AMBER

Specifications

Modular, 25 cm x 1 m	16332
Yarn Manufacturer	Aquafil
Yarn System	100% Recycled Content Nylon
Dye Method	100% Solution Dyed
Construction	Tufted Textured Loop
Preservative Protection	Intersept®
Soil/Stain Protection	Protek12™
Pile Thickness	0.08 in, 2.1 mm
Pile Density	8,143 oz/yd³
Total Recycled Content	69%
Indoor Air Quality	CRI Green Label Plus #GLP0820

View the full product specification on [interface.com](#)

Installation Methods



ASHLAR



HERRINGBONE



BROWSE IMAGES
ORDER SAMPLES



PRODUCT OPEN AIR 402 | COLORS CHARCOAL & NATURAL | INSTALLED ASHLAR



Open Air™ 403 Color Range



106727 BLACK



106728 IRON



106729 FLANNEL



106730 CHARCOAL



106731 NATURAL



106732 NICKEL



106733 GRANITE



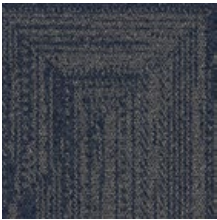
106734 STONE



106735 LINEN



106797 MIST



107698 NAVY



107699 EBONY



107700 OAT



107701 BROWN



107702 SHELL



107703 AMBER

Specifications **i2**

Modular, 50 cm x 50 cm	16331
Yarn Manufacturer	Aquafil
Yarn System	100% Recycled Content Nylon
Dye Method	100% Solution Dyed
Construction	Tufted Textured Loop
Preservative Protection	Intersept®
Soil/Stain Protection	Protekt ² ™
Pile Thickness	0.08 in, 2.1 mm
Pile Density	8,241 oz/yd³
Total Recycled Content	68%
Indoor Air Quality	CRI Green Label Plus #GLP0820

View the full product specification on [interface.com](#)

Installation Method



NON DIRECTIONAL



BROWSE IMAGES
ORDER SAMPLES

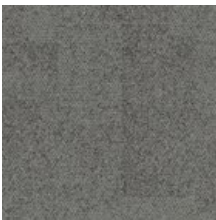
Open Air™ 404 Color Range



106745 BLACK



106746 IRON



106747 FLANNEL



106748 CHARCOAL



106749 NATURAL



106750 NICKEL



106751 GRANITE



106752 STONE



106753 LINEN



107704 MIST



107705 NAVY



107706 EBONY



107707 OAT



107708 BROWN



107709 SHELL



107710 AMBER

Specifications **i2**

Modular, 50 cm x 50 cm	16333
Yarn Manufacturer	Aquafil
Yarn System	100% Recycled Content Nylon
Dye Method	100% Solution Dyed
Construction	Tufted Textured Loop
Preservative Protection	Intersept®
Soil/Stain Protection	Protek ¹² ™
Pile Thickness	0.07 in, 1.8 mm
Pile Density	9,771 oz/yd³
Total Recycled Content	68%
Indoor Air Quality	CRI Green Label Plus #GLP0820

View the full product specification on [interface.com](#)

Installation Method



NON DIRECTIONAL



BROWSE IMAGES
ORDER SAMPLES



PRODUCT OPEN AIR 404 COLOR NICKEL INSTALLED NON DIRECTIONAL



Open Air™ 405 Color Range



106754 BLACK



106755 IRON



106756 FLANNEL



106757 CHARCOAL



106758 NATURAL



106759 NICKEL



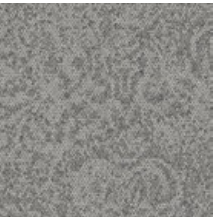
106760 GRANITE



106761 STONE



106762 LINEN



107711 MIST



107712 NAVY



107713 EBONY



107714 OAT



107715 BROWN



107716 SHELL



107717 AMBER

Specifications **i2**

Modular, 50 cm x 50 cm	16334
Yarn Manufacturer	Aquafil
Yarn System	100% Recycled Content Nylon
Dye Method	100% Solution Dyed
Construction	Tufted Textured Loop
Preservative Protection	Intersept®
Soil/Stain Protection	Protek ⁱ² ™
Pile Thickness	0.08 in, 2 mm
Pile Density	8,203 oz/yd³
Total Recycled Content	68%
Indoor Air Quality	CRI Green Label Plus #GLP0820

View the full product specification on [interface.com](https://www.interface.com)

Installation Method



NON DIRECTIONAL

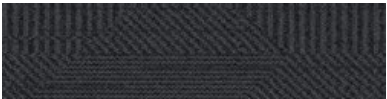


BROWSE IMAGES
ORDER SAMPLES

Open Air™ 407 Color Range



106939 BLACK



106940 IRON



106941 FLANNEL



106942 CHARCOAL



106943 NATURAL



106944 NICKEL



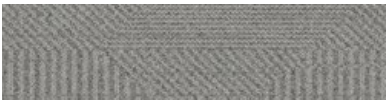
106945 GRANITE



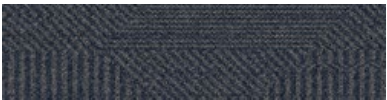
106946 STONE



106947 LINEN



107718 MIST



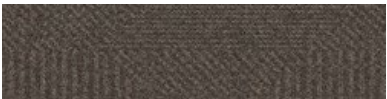
107719 NAVY



107720 EBONY



107721 OAT



107722 BROWN



107723 SHELL



107724 AMBER

Specifications

Modular, 25 cm x 1 m	16337
Yarn Manufacturer	Aquafil
Yarn System	100% Recycled Content Nylon
Dye Method	100% Solution Dyed
Construction	Tufted Textured Loop
Preservative Protection	Intersept®
Soil/Stain Protection	Protekt ² ™
Pile Thickness	0.09 in, 2.4 mm
Pile Density	6,968 oz/yd³
Total Recycled Content	68%
Indoor Air Quality	CRI Green Label Plus #GLP0820

View the full product specification on [interface.com](#)

Installation Methods



ASHLAR



HERRINGBONE



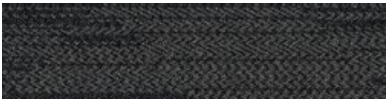
BROWSE IMAGES
ORDER SAMPLES



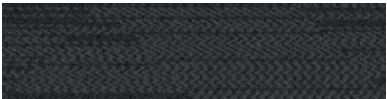
PRODUCT OPEN AIR 407 **COLOR** BLACK **INSTALLED** HERRINGBONE



Open Air™ 408 Color Range



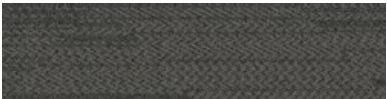
106948 BLACK



106949 IRON



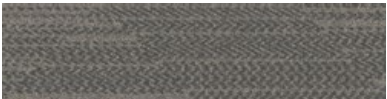
106950 FLANNEL



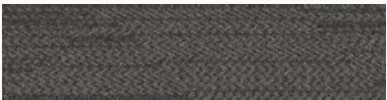
106951 CHARCOAL



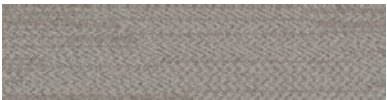
106952 NATURAL



106953 NICKEL



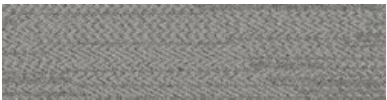
106954 GRANITE



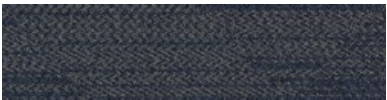
106955 STONE



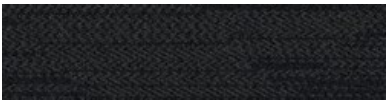
106956 LINEN



107725 MIST



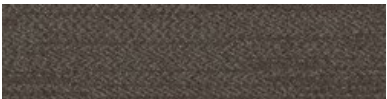
107726 NAVY



107727 EBONY



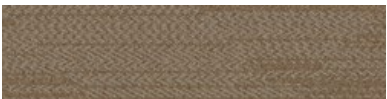
107728 OAT



107729 BROWN



107730 SHELL



107731 AMBER

Specifications

Modular, 25 cm x 1 m	16338
Yarn Manufacturer	Aquafil
Yarn System	100% Recycled Content Nylon
Dye Method	100% Solution Dyed
Construction	Tufted Textured Loop
Preservative Protection	Intersept®
Soil/Stain Protection	Protekt ² ™
Pile Thickness	0.09 in, 2.4 mm
Pile Density	6,968 oz/yd ³
Total Recycled Content	68%
Indoor Air Quality	CRI Green Label Plus #GLP0820

[View the full product specification on interface.com](https://www.interface.com)

Installation Methods



ASHLAR

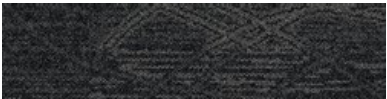


HERRINGBONE



BROWSE IMAGES
ORDER SAMPLES

Open Air™ 409 Color Range



106957 BLACK



106958 IRON



106959 FLANNEL



106960 CHARCOAL



106961 NATURAL



106962 NICKEL



106963 GRANITE



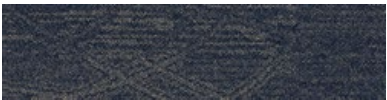
106964 STONE



106965 LINEN



107732 MIST



107733 NAVY



107734 EBONY



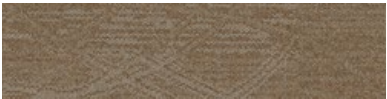
107735 OAT



107736 BROWN



107737 SHELL



107738 AMBER

Specifications

Modular, 25 cm x 1 m	16339
Yarn Manufacturer	Aquafil
Yarn System	100% Recycled Content Nylon
Dye Method	100% Solution Dyed
Construction	Tufted Textured Loop
Preservative Protection	Intersept®
Soil/Stain Protection	Protekt ¹² ™
Pile Thickness	0.09 in, 2.4 mm
Pile Density	6,968 oz/yd³
Total Recycled Content	68%
Indoor Air Quality	CRI Green Label Plus #GLP0820

View the full product specification on [interface.com](#)

Installation Methods



ASHLAR



HERRINGBONE



BROWSE IMAGES
ORDER SAMPLES



PRODUCT OPEN AIR 409 COLOR NATURAL INSTALLED ASHLAR



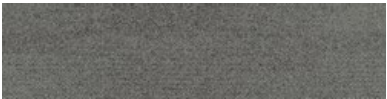
Open Air™ 410 Color Range



106966 BLACK



106967 IRON



106968 FLANNEL



106969 CHARCOAL



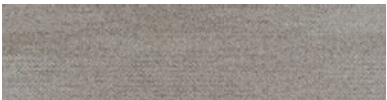
106970 NATURAL



106971 NICKEL



106972 GRANITE



106973 STONE



106974 LINEN



107739 MIST



107740 NAVY



107741 EBONY



107742 OAT



107743 BROWN



107744 SHELL



107745 AMBER

Specifications

Modular, 25 cm x 1 m	16340
Yarn Manufacturer	Aquafil
Yarn System	100% Recycled Content Nylon
Dye Method	100% Solution Dyed
Construction	Tufted Textured Loop
Preservative Protection	Intersept®
Soil/Stain Protection	Protek ² ™
Pile Thickness	0.09 in, 2.4 mm
Pile Density	6,968 oz/yd ³
Total Recycled Content	68%
Indoor Air Quality	CRI Green Label Plus #GLP0820

View the full product specification on [interface.com](https://www.interface.com)

Installation Methods



ASHLAR



HERRINGBONE



BROWSE IMAGES
ORDER SAMPLES

Open Air™ 411 Color Range



106976 BLACK



106977 IRON



106978 FLANNEL



106979 CHARCOAL



106980 NATURAL



106981 NICKEL



106982 GRANITE



106983 STONE



106984 LINEN



107746 MIST



107747 NAVY



107748 EBONY



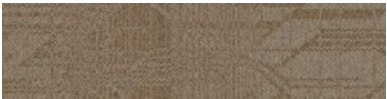
107749 OAT



107750 BROWN



107751 SHELL



107752 AMBER

Specifications

Modular, 25 cm x 1 m	16341
Yarn Manufacturer	Aquafil
Yarn System	100% Recycled Content Nylon
Dye Method	100% Solution Dyed
Construction	Tufted Textured Loop
Preservative Protection	Intersept®
Soil/Stain Protection	Protekt ¹² ™
Pile Thickness	0.09 in, 2.4 mm
Pile Density	6,968 oz/yd³
Total Recycled Content	68%
Indoor Air Quality	CRI Green Label Plus #GLP0820

View the full product specification on [interface.com](#)

Installation Methods



ASHLAR



HERRINGBONE



BROWSE IMAGES
ORDER SAMPLES



PRODUCT OPEN AIR 411 COLOR OAT
PRODUCT ON LINE™ COLOR COBALT INSTALLED ASHLAR



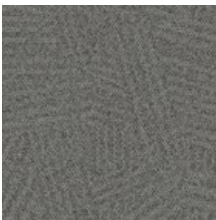
Open Air™ 412 Color Range



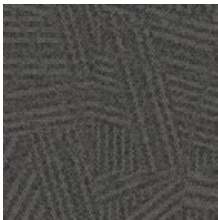
106985 BLACK



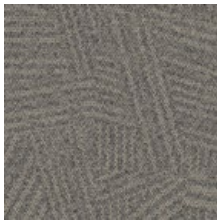
106986 IRON



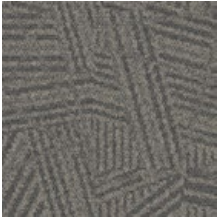
106987 FLANNEL



106988 CHARCOAL



106989 NATURAL



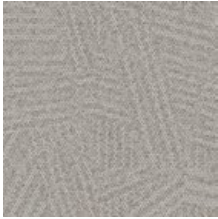
106990 NICKEL



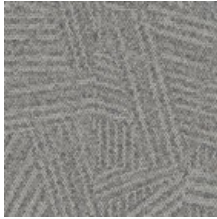
106991 GRANITE



106992 STONE



106993 LINEN



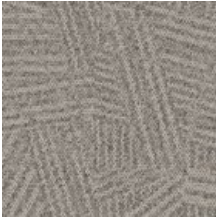
107753 MIST



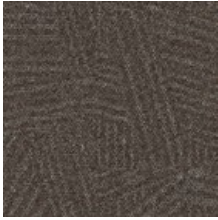
107754 NAVY



107755 EBONY



107756 OAT



107757 BROWN



107758 SHELL



107759 AMBER

Specifications

Modular, 50 cm x 50 cm	16342
Yarn Manufacturer	Aquafil
Yarn System	100% Recycled Content Nylon
Dye Method	100% Solution Dyed
Construction	Tufted Textured Loop
Preservative Protection	Intersept®
Soil/Stain Protection	Protekt ² ™
Pile Thickness	0.09 in, 2.4 mm
Pile Density	7,355 oz/yd ³
Total Recycled Content	68%
Indoor Air Quality	CRI Green Label Plus #GLP0820

View the full product specification on [interface.com](#)

Installation Method



MONOLITHIC



BROWSE IMAGES
ORDER SAMPLES

Open Air™ 413 Color Range



106994 BLACK



106995 IRON



106996 FLANNEL



106997 CHARCOAL



106998 NATURAL



106999 NICKEL



107000 GRANITE



107001 STONE



107002 LINEN



107760 MIST



107761 NAVY



107762 EBONY



107763 OAT



107764 BROWN



107765 SHELL



107766 AMBER

Specifications

Modular, 50 cm x 50 cm	16343
Yarn Manufacturer	Aquafil
Yarn System	100% Recycled Content Nylon
Dye Method	100% Solution Dyed
Construction	Tufted Textured Loop
Preservative Protection	Intersept®
Soil/Stain Protection	Protek ² ™
Pile Thickness	0.09 in, 2.4 mm
Pile Density	6,968 oz/yd ³
Total Recycled Content	68%
Indoor Air Quality	CRI Green Label Plus #GLP0820

View the full product specification on [interface.com](#)

Installation Method



MONOLITHIC



BROWSE IMAGES
ORDER SAMPLES



LVT PRODUCT NATURAL WOODGRAINS™ COLOR WASHED WHEAT INSTALLED ASHLAR
CARPET PRODUCT OPEN AIR 413 COLOR LINEN INSTALLED MONOLITHIC



Open Air™ 414 Color Range



107003 BLACK



107004 IRON



107005 FLANNEL



107006 CHARCOAL



107007 NATURAL



107008 NICKEL



107009 GRANITE



107010 STONE



107011 LINEN



107767 MIST



107768 NAVY



107769 EBONY



107770 OAT



107771 BROWN



107772 SHELL



107773 AMBER

Specifications **i2**

Modular, 50 cm x 50 cm	16344
Yarn Manufacturer	Aquafil
Yarn System	100% Recycled Content Nylon
Dye Method	100% Solution Dyed
Construction	Tufted Textured Loop
Preservative Protection	Intersept®
Soil/Stain Protection	Protekt ² ™
Pile Thickness	0.09 in, 2.4 mm
Pile Density	6,968 oz/yd³
Total Recycled Content	68%
Indoor Air Quality	CRI Green Label Plus #GLP0820

View the full product specification on [interface.com](https://www.interface.com)

Installation Method



NON DIRECTIONAL



BROWSE IMAGES
ORDER SAMPLES

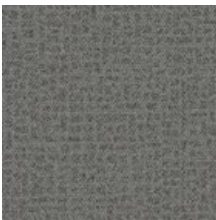
Open Air™ 415 Color Range



107012 BLACK



107013 IRON



107014 FLANNEL



107015 CHARCOAL



107016 NATURAL



107017 NICKEL



107018 GRANITE



107019 STONE



107020 LINEN



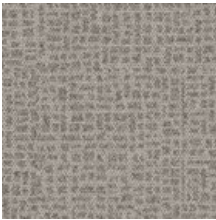
107774 MIST



107775 NAVY



107776 EBONY



107777 OAT



107778 BROWN



107779 SHELL



107780 AMBER

Specifications

Modular, 50 cm x 50 cm	16345
Yarn Manufacturer	Aquafil
Yarn System	100% Recycled Content Nylon
Dye Method	100% Solution Dyed
Construction	Tufted Textured Loop
Preservative Protection	Intersept®
Soil/Stain Protection	Protekt ² ™
Pile Thickness	0.09 in, 2.4 mm
Pile Density	6,968 oz/yd³
Total Recycled Content	68%
Indoor Air Quality	CRI Green Label Plus #GLP0820

View the full product specification on [interface.com](#)

Installation Method



MONOLITHIC



BROWSE IMAGES
ORDER SAMPLES



CARPET PRODUCT OPEN AIR 415 | COLOR OAT
LVT PRODUCT TEXTURED STONES™ | COLOR COOL POLISHED CEMENT | INSTALLED MONOLITHIC



Open Air™ 416 Color Range



107021 BLACK



107022 IRON



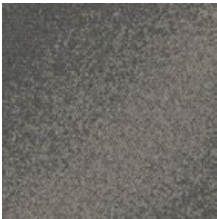
107023 FLANNEL



107024 CHARCOAL



107025 NATURAL



107026 NICKEL



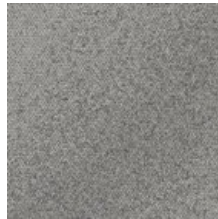
107027 GRANITE



107028 STONE



107029 LINEN



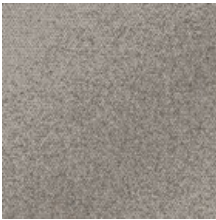
107781 MIST



107782 NAVY



107783 EBONY



107784 OAT



107785 BROWN



107786 SHELL



107787 AMBER

Shared elements create visual connection and pattern progression from **Open Air 416** to **Open Air 417**.

Specifications

Modular, 50 cm x 50 cm	14750
Yarn Manufacturer	Aquafil
Yarn System	100% Recycled Content Nylon
Dye Method	100% Solution Dyed
Construction	Tufted Textured Loop
Preservative Protection	Intersept®
Soil/Stain Protection	Protekt ² ™
Pile Thickness	0.09 in, 2.4 mm
Pile Density	7,355 oz/yd ³
Total Recycled Content	68%
Indoor Air Quality	CRI Green Label Plus #GLP0820

View the full product specification on [interface.com](https://www.interface.com)

Installation Method



NON DIRECTIONAL



BROWSE IMAGES
ORDER SAMPLES

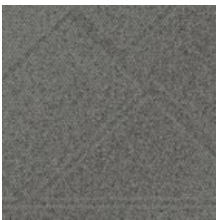
Open Air™ 417 Color Range



107030 BLACK



107031 IRON



107032 FLANNEL



107033 CHARCOAL



107034 NATURAL



107035 NICKEL



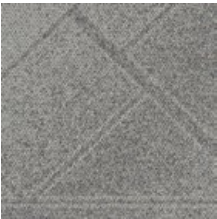
107036 GRANITE



107037 STONE



107038 LINEN



107788 MIST



107789 NAVY



107790 EBONY



107791 OAT



107792 BROWN



107793 SHELL



107794 AMBER

Shared elements create visual connection and pattern progression from **Open Air 416** to **Open Air 417**.

Specifications

Modular, 50 cm x 50 cm	14751
Yarn Manufacturer	Aquafil
Yarn System	100% Recycled Content Nylon
Dye Method	100% Solution Dyed
Construction	Tufted Textured Loop
Preservative Protection	Intersept®
Soil/Stain Protection	Protekt ² ™
Pile Thickness	0.09 in, 2.4 mm
Pile Density	6,968 oz/yd³
Total Recycled Content	68%
Indoor Air Quality	CRI Green Label Plus #GLP0820

View the full product specification on [interface.com](#)

Installation Method



NON DIRECTIONAL



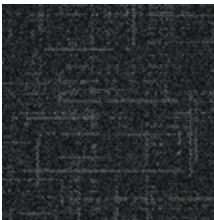
BROWSE IMAGES
ORDER SAMPLES



PRODUCT OPEN AIR 417 **COLORS** FLANNEL & BLACK **INSTALLED** NON DIRECTIONAL



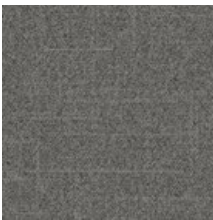
Open Air™ 418 Color Range



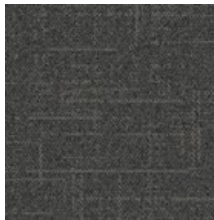
107039 BLACK



107040 IRON



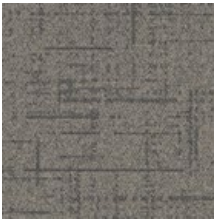
107041 FLANNEL



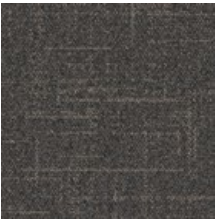
107042 CHARCOAL



107043 NATURAL



107044 NICKEL



107045 GRANITE



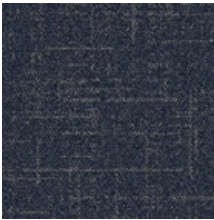
107046 STONE



107047 LINEN



107795 MIST



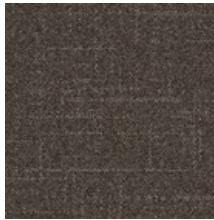
107796 NAVY



107797 EBONY



107798 OAT



107799 BROWN



107800 SHELL



107801 AMBER

Specifications

Modular, 50 cm x 50 cm	14752
Yarn Manufacturer	Aquafil
Yarn System	100% Recycled Content Nylon
Dye Method	100% Solution Dyed
Construction	Tufted Textured Loop
Preservative Protection	Intersept®
Soil/Stain Protection	Protekt ² ™
Pile Thickness	0.08 in, 2.1 mm
Pile Density	7,650 oz/yd ³
Total Recycled Content	68%
Indoor Air Quality	CRI Green Label Plus #GLP0820

[View the full product specification on interface.com](https://www.interface.com)

Installation Method



MONOLITHIC



BROWSE IMAGES
ORDER SAMPLES

Open Air™ 419 Color Range



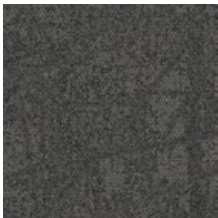
107048 BLACK



107049 IRON



107050 FLANNEL



107051 CHARCOAL



107052 NATURAL



107053 NICKEL



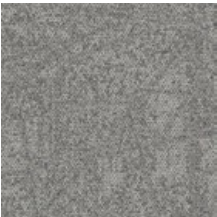
107054 GRANITE



107055 STONE



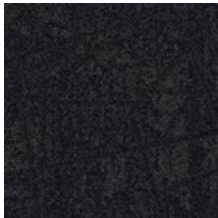
107056 LINEN



107802 MIST



107803 NAVY



107804 EBONY



107805 OAT



107806 BROWN



107807 SHELL



107808 AMBER

Specifications

Modular, 50 cm x 50 cm	14753
Yarn Manufacturer	Aquafil
Yarn System	100% Recycled Content Nylon
Dye Method	100% Solution Dyed
Construction	Tufted Textured Loop
Preservative Protection	Intersept®
Soil/Stain Protection	Protekt ² ™
Pile Thickness	0.09 in, 2.4 mm
Pile Density	6,968 oz/yd³
Total Recycled Content	68%
Indoor Air Quality	CRI Green Label Plus #GLP0820

View the full product specification on [interface.com](#)

Installation Method



MONOLITHIC



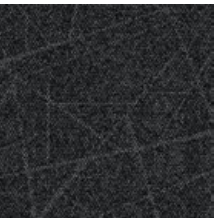
BROWSE IMAGES
ORDER SAMPLES



PRODUCT OPEN AIR 419 · COLOR BLACK · INSTALLED MONOLITHIC



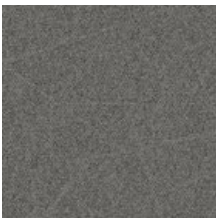
Open Air™ 420 Color Range



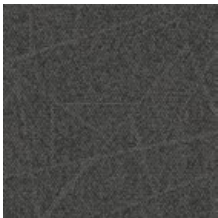
107057 BLACK



107058 IRON



107059 FLANNEL



107060 CHARCOAL



107061 NATURAL



107062 NICKEL



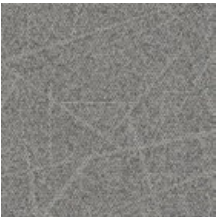
107063 GRANITE



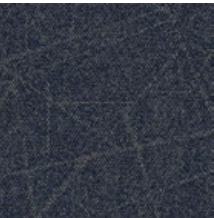
107064 STONE



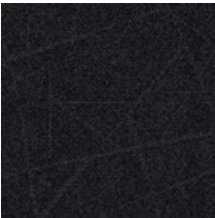
107065 LINEN



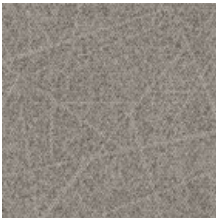
107809 MIST



107810 NAVY



107811 EBONY



107812 OAT



107813 BROWN



107814 SHELL



107815 AMBER

Specifications

Modular, 50 cm x 50 cm	14754
Yarn Manufacturer	Aquafil
Yarn System	100% Recycled Content Nylon
Dye Method	100% Solution Dyed
Construction	Tufted Textured Loop
Preservative Protection	Intersept®
Soil/Stain Protection	Protekt ² ™
Pile Thickness	0.09 in, 2.4 mm
Pile Density	6,968 oz/yd³
Total Recycled Content	68%
Indoor Air Quality	CRI Green Label Plus #GLP0820

View the full product specification on [interface.com](#)

Installation Method



MONOLITHIC



BROWSE IMAGES
ORDER SAMPLES

Open Air™ 421 Color Range



107066 BLACK



107067 IRON



107068 FLANNEL



107069 CHARCOAL



107070 NATURAL



107071 NICKEL



107072 GRANITE



107073 STONE



107074 LINEN



107816 MIST



107817 NAVY



107818 EBONY



107819 OAT



107820 BROWN



107821 SHELL



107822 AMBER

Specifications

Modular, 50 cm x 50 cm	14755
Yarn Manufacturer	Aquafil
Yarn System	100% Recycled Content Nylon
Dye Method	100% Solution Dyed
Construction	Tufted Textured Loop
Preservative Protection	Intersept®
Soil/Stain Protection	Protek12™
Pile Thickness	0.09 in, 2.4 mm
Pile Density	6,968 oz/yd³
Total Recycled Content	68%
Indoor Air Quality	CRI Green Label Plus #GLP0820

View the full product specification on [interface.com](#)

Installation Method



NON DIRECTIONAL



BROWSE IMAGES
ORDER SAMPLES



PRODUCT OPEN AIR 421 · COLOR SHELL · INSTALLED NON DIRECTIONAL
PRODUCT OPEN AIR 401 · COLOR CHARCOAL · INSTALLED ASHLAR



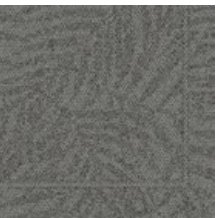
Open Air™ 422 Color Range



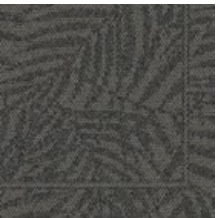
107075 BLACK



107076 IRON



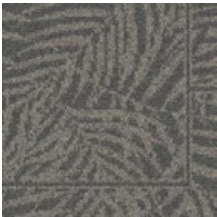
107077 FLANNEL



107078 CHARCOAL



107079 NATURAL



107080 NICKEL



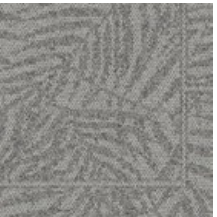
107081 GRANITE



107082 STONE



107083 LINEN



107823 MIST



107824 NAVY



107825 EBONY



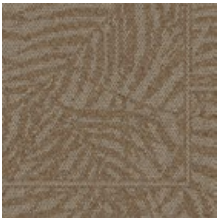
107826 OAT



107827 BROWN



107828 SHELL



107829 AMBER

Specifications

Modular, 50 cm x 50 cm	14756
Yarn Manufacturer	Aquafil
Yarn System	100% Recycled Content Nylon
Dye Method	100% Solution Dyed
Construction	Tufted Textured Loop
Preservative Protection	Intersept®
Soil/Stain Protection	Protekt ² ™
Pile Thickness	0.09 in, 2.4 mm
Pile Density	6,968 oz/yd ³
Total Recycled Content	68%
Indoor Air Quality	CRI Green Label Plus #GLP0820

View the full product specification on [interface.com](https://www.interface.com)

Installation Method



NON DIRECTIONAL

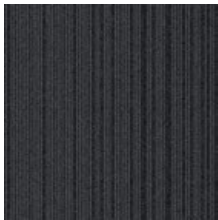


BROWSE IMAGES
ORDER SAMPLES

Open Air™ 423 Color Range



107084 BLACK



107085 IRON



107086 FLANNEL



107087 CHARCOAL



107088 NATURAL



107089 NICKEL



107090 GRANITE



107091 STONE



107092 LINEN



107830 MIST



107831 NAVY



107832 EBONY



107833 OAT



107834 BROWN



107835 SHELL



107836 AMBER

Specifications

Modular, 50 cm x 50 cm	14757
Yarn Manufacturer	Aquafil
Yarn System	100% Recycled Content Nylon
Dye Method	100% Solution Dyed
Construction	Tufted Textured Loop
Preservative Protection	Intersept®
Soil/Stain Protection	Protekt ² ™
Pile Thickness	0.09 in, 2.4 mm
Pile Density	6,968 oz/yd³
Total Recycled Content	68%
Indoor Air Quality	CRI Green Label Plus #GLP0820

View the full product specification on [interface.com](#)

Installation Methods



ASHLAR



BRICK



MONOLITHIC



NON DIRECTIONAL



QUARTER-TURN



[BROWSE IMAGES](#)
[ORDER SAMPLES](#)



PRODUCT OPEN AIR 423 COLORS BLACK, NAVY & FLANNEL INSTALLED MONOLITHIC



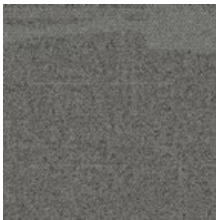
Open Air™ 441 Color Range



108318 BLACK



108319 IRON



108320 FLANNEL



108321 CHARCOAL



108322 NATURAL



108323 NICKEL



108324 GRANITE



108325 STONE



108326 LINEN



108327 MIST



108328 NAVY



108329 EBONY



108330 OAT



108331 BROWN



108332 SHELL



108333 AMBER

Shared elements create visual connection with Open Air 403, 407, 415, 418 and 442.

Specifications **i2**

Modular, 50 cm x 50 cm	12621
Yarn Manufacturer	Aquafil
Yarn System	100% Recycled Content Nylon
Dye Method	100% Solution Dyed
Construction	Tufted Textured Loop
Preservative Protection	Intersept®
Soil/Stain Protection	Protekt ² ™
Pile Thickness	0.11 in, 2.9 mm
Pile Density	7,902 oz/yd³
Total Recycled Content	68%
Indoor Air Quality	CRI Green Label Plus #GLP0820

View the full product specification on [interface.com](#)

Installation Methods



NON DIRECTIONAL



QUARTER-TURN



BROWSE IMAGES
ORDER SAMPLES

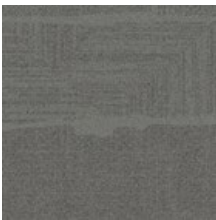
Open Air™ 442 Color Range



108431 BLACK



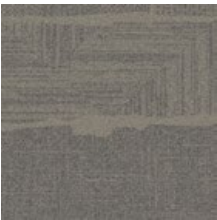
108432 IRON



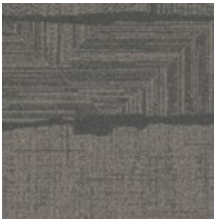
108433 FLANNEL



108434 CHARCOAL



108435 NATURAL



108436 NICKEL



108437 GRANITE



108438 STONE



108439 LINEN



108440 MIST



108441 NAVY



108442 EBONY



108443 OAT



108444 BROWN



108445 SHELL



108446 AMBER

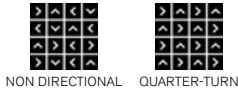
Shared elements create visual connection with **Open Air 403, 407, 415, 418 and 442.**
This special 1 meter square style ships in 4 weeks. Minimum order required. Contact your sales rep for pricing and details.

Specifications

Modular, 1 m x 1 m	12625
Yarn Manufacturer	Aquafil
Yarn System	100% Recycled Content Nylon
Dye Method	100% Solution Dyed
Construction	Tufted Textured Loop
Preservative Protection	Intersept®
Soil/Stain Protection	Protekt™
Pile Thickness	0.11 in, 2.9 mm
Pile Density	7,902 oz/yd³
Total Recycled Content	68%
Indoor Air Quality	CRI Green Label Plus #GLP0820

View the full product specification on [interface.com](#)

Installation Methods



BROWSE IMAGES
ORDER SAMPLES

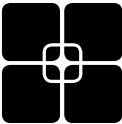
PRODUCT OPEN AIR 442 COLOR CHARCOAL INSTALLED NON DIRECTIONAL



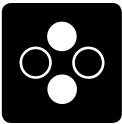
Why Our Modular Flooring?



i2® Modular Carpet
Minimize waste & save money. Interface's i2® styles have mergeable dye lots. That means i2 tiles from different dye lots always blend with tiles of the same color, even when individual tiles are selectively replaced years later. This minimizes the need for attic stock and saves money. And i2 styles that install non directionally generate an average of only 1.5% installation waste as compared to 3-4% for typical modular carpet and an average of 14% for traditional roll carpet.



TacTiles™
No glue installation. Our revolutionary TacTiles installation system eliminates the need for glue, adhering tiles securely together to form a floor that “floats” for greater flexibility, easier replacement and long-term performance. The result? Less mess, less waste and virtually no VOCs, not to mention an environmental footprint that is over 90% lower than that of traditional glue adhesives. TacTiles are approved for use on GlasBac™, CQuest™GB, CQuest™Bio and CQuest™BioX.



Intersept®
Mold protection. Our proprietary preservative, Intersept, protects our modular carpet against mold growth and odor-causing bacteria—guaranteed. Intersept treated carpet, with proper maintenance, shows no mold or bacterial growth when tested per the ASTM E2471 Standard Test Method. Intersept is EPA approved for safe use in carpet, water insoluble and contains no halogens, heavy metals, phenols or formaldehyde. Intersept is standard in Interface carpet tile products backed with GlasBac, CQuestGB, ReadyBac™ and CushionBac Renew™.



Environmental Product Declaration (EPD)
A statement of product ingredients and environmental impacts over the entire life cycle of a product. A comprehensive life cycle assessment (LCA) is performed to ISO standards to develop an EPD, after which both the EPD and LCA must be third party verified.



Health Product Declaration (HPD)
A transparency tool for evaluating whether a product supports Green Chemistry. As part of our work on Health and Materials, Interface continuously reduces the environmental and health impacts of our products through elimination of materials of concern.



CRI Green Label Plus
An independent testing program that identifies carpet and adhesives with very low emissions of VOCs to help improve indoor air quality.



NSF 140 Sustainable Carpet Assessment
The only carpet sustainability standard in North America that evaluates the environmental impact of carpet for its entire life cycle.



ReEntry™
Recyclable. Through our ReEntry program we reclaim and recycle our carpet tile and Sound Choice™ LVT. ReEntry is the only third party certified recycling system among North American flooring manufacturers.



Sustainability Transparency
Transparency and certified sustainability leadership come standard on Interface products. We enlist outside partners to help us evaluate the entire product life cycle and reduce the environmental and human health impact of our flooring. And, carpet products made in our US facilities are made with 99% renewable energy.

📍 **Samples**

Register and order samples at interface.com. Not near a computer? You can also request samples by calling one of the numbers below.

United States
1.877.605.1500

Canada
1.866.398.3192

interface.com

- Do more on interface.com
- Browse products and order samples
 - Save and share favorites
 - See images of products in a variety of room scenes
 - Browse floor designs, change colors, upload your own image, download and share
 - Get full specifications, sustainability certifications and more
 - Check order status and inventory availability
 - Sign up to get the latest information on Interface products and news

InterCircle Sample Return

Help us close the loop on the carpet sampling process. Through our InterCircle Sample Return program, sample materials stay out of the landfill and are re-used as samples until it is time to recycle them into new carpet. By reducing sample production material and diverting old materials from the landfill, we can reduce our overall environmental footprint.

Call 1.877.605.1500 (U.S.) or 1.866.398.3192 (Canada) to order a sample return bag with a prepaid return label.

We have tried our very best to accurately represent product colors. However, due to the nature of printed materials, color of actual products may vary slightly. Please request a sample to see actual product color.

All product specifications reflect averages derived from product sample testing, are subject to normal manufacturing and testing tolerances and inherent pattern variances, and may be changed without notice. For more information about these and other important attributes of the product(s) described herein, including recycled content and product warranty information, please see interface.com/disclaimer.



Printed on 50% post consumer waste (PCW)
fiber manufactured using wind power.

interface.com

United States Headquarters

1280 West Peachtree Street NW
Atlanta, GA 30309
1.800.634.6032

Canadian Headquarters

233 Lahr Drive
Belleville, ON K8N 5S2
1.800.267.2149 ext. 52128

CIM# IFS00922 10/2024