



Printed on 50% post consumer waste (PCW) fiber manufactured using wind power.

We have tried our very best to accurately represent product colors. However, due to the nature of printed materials, color of actual products may vary slightly. Please request a sample to see actual product color.

interface.com

United States Headquarters
1280 West Peachtree Street NW
Atlanta, GA 30309
1.800.634.6032

Canadian Headquarters
233 Lahr Drive
Belleville, ON K8N 5S2
1.800.267.2149 ext.52128

Brazilian Headquarters
Av. Das Nações Unidas 14261
25 andar, sala 25 - 122, Brooklin Paulista
São Paulo SP 04578 - 000
Brasil
+5511.2196.0900

Latin American Headquarters
Montes Urales # 415 Piso 6
Lomas de Chapultepec
Miguel Hidalgo, CDMX,
11000 Mexico
+ 52.55.2791.6812

CIM # IFS00872 03/2021



Climate change is undeniable. And reversible. Our mission is to prove it. Join the #ClimateTakeBack and help create a climate fit for life.



OPEN AIR

Neutrals

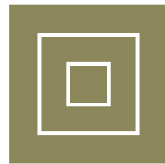
Interface

Table of Contents



Organic
Patterns

Pages 3 - 24



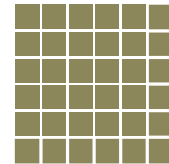
Geometric
Patterns

Pages 25 - 36



Linear
Patterns

Pages 37 - 40



Textured
Patterns

Pages 41 - 54

Why Interface

Pages 57-58

Smart design. Unlimited opportunities.

Introducing Open Air™, an expansive platform of affordable, hard-working carpet styles designed with open spaces in mind. Available in our best-selling neutrals, Open Air products integrate effortlessly with the Interface system of solutions to elevate any space. The biggest advantage of this in-demand collection? Innovation in both design and manufacturing allows us to create the same high-quality, high-performance carpet products you expect at one low price point.



Organic Patterns

402 | 405 | 410 | 416 | 421
404 | 409 | 411 | 420 | 422





Open Air™ 402 Colorline



106736 BLACK



106737 IRON



106738 FLANNEL



106739 CHARCOAL



106740 NATURAL



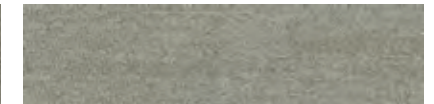
106741 NICKEL



106742 GRANITE



106743 STONE



106744 LINEN

Specifications

Modular, 25cm x 1m	163320AK0G
Backing System	CQuest™GB
Yarn Manufacturer	Aquafil
Yarn System	100% Recycled Content Nylon
Color System	100% Solution Dye
Construction	Tufted Textured Loop
Preservative Protection	Intersept®
Soil/Stain Protection	Protekt2™
Pile Thickness	0.084 in., 2.1 mm
Pile Density	8,143
Total Recycled Content	83%
Indoor Air Quality	CRI Green Label Plus #GLP0820

Installation Methods



ASHLAR



HERRINGBONE



BROWSE IMAGES
ORDER SAMPLES

Open Air™ 404 Colorline



106745 BLACK



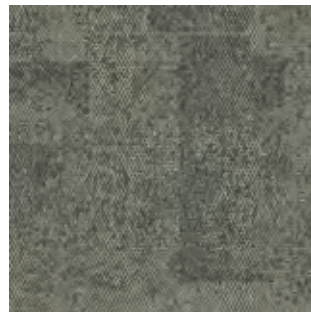
106746 IRON



106747 FLANNEL



106748 CHARCOAL



106749 NATURAL



106750 NICKEL



106751 GRANITE



106752 STONE



106753 LINEN

Specifications **i2**

Modular, 50cm x 50cm	163330250G
Backing System	CQuest™GB
Yarn Manufacturer	Aquafil
Yarn System	100% Recycled Content Nylon
Color System	100% Solution Dye
Construction	Tufted Textured Loop
Preservative Protection	Intersept®
Soil/Stain Protection	Protek2™
Pile Thickness	0.07 in., 1.8 mm
Pile Density	9,257
Total Recycled Content	83%
Indoor Air Quality	CRI Green Label Plus #GLP0820

Installation Methods



NON DIRECTIONAL



BROWSE IMAGES
ORDER SAMPLES



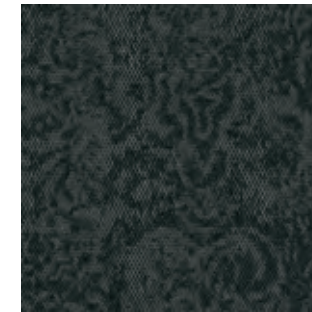
PRODUCT OPEN AIR 404 COLOR 106750 NICKEL INSTALLED NON DIRECTIONAL



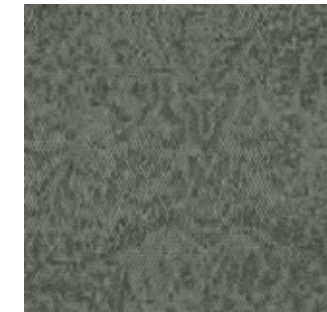
Open Air™ 405 Colorline



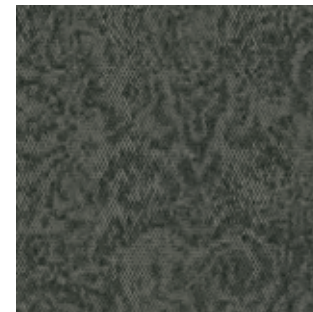
106754 BLACK



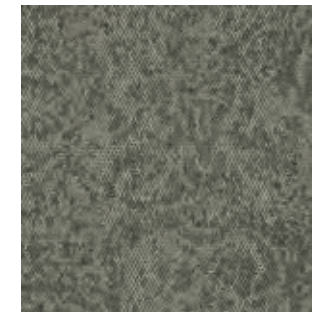
106755 IRON



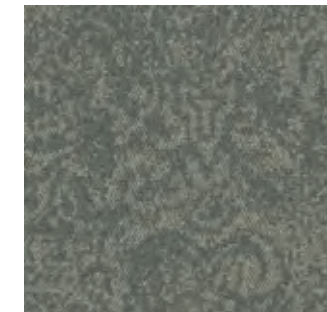
106756 FLANNEL



106757 CHARCOAL



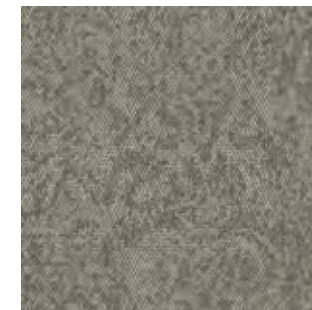
106758 NATURAL



106759 NICKEL



106760 GRANITE



106761 STONE



106762 LINEN

Specifications **i2**

Modular, 50cm x 50cm	163340250G
Backing System	CQuest™GB
Yarn Manufacturer	Aquafil
Yarn System	100% Recycled Content Nylon
Color System	100% Solution Dye
Construction	Tufted Textured Loop
Preservative Protection	Intersept®
Soil/Stain Protection	Protek2™
Pile Thickness	0.079 in., 2.0 mm
Pile Density	8,203
Total Recycled Content	83%
Indoor Air Quality	CRI Green Label Plus #GLP0820

Installation Methods



NON DIRECTIONAL



BROWSE IMAGES
ORDER SAMPLES

Open Air™ 409 Colorline



106957 BLACK



106958 IRON



106959 FLANNEL



106960 CHARCOAL



106961 NATURAL



106962 NICKEL



106963 GRANITE



106964 STONE



106965 LINEN



Specifications

Modular, 25cm x 1m	163390AK0G
Backing System	CQuest™GB
Yarn Manufacturer	Aquafil
Yarn System	100% Recycled Content Nylon
Color System	100% Solution Dye
Construction	Tufted Textured Loop
Preservative Protection	Intersept®
Soil/Stain Protection	Protekt2™
Pile Thickness	0.093 in., 2.4 mm
Pile Density	6,968
Total Recycled Content	83%
Indoor Air Quality	CRI Green Label Plus #GLP0820

Installation Methods



ASHLAR



HERRINGBONE



BROWSE IMAGES
ORDER SAMPLES

PRODUCT OPEN AIR 409 COLOR 106961 NATURAL INSTALLED ASHLAR



Open Air™ 410 Colorline



106966 BLACK



106967 IRON



106968 FLANNEL



106969 CHARCOAL



106970 NATURAL



106971 NICKEL



106972 GRANITE



106973 STONE



106974 LINEN

Specifications

Modular, 25cm x 1m	163400AK0G
Backing System	CQuest™GB
Yarn Manufacturer	Aquafil
Yarn System	100% Recycled Content Nylon
Color System	100% Solution Dye
Construction	Tufted Textured Loop
Preservative Protection	Intersept®
Soil/Stain Protection	Protekt2™
Pile Thickness	0.093 in., 2.4 mm
Pile Density	6,968
Total Recycled Content	83%
Indoor Air Quality	CRI Green Label Plus #GLP0820

Installation Methods



ASHLAR



HERRINGBONE



BROWSE IMAGES
ORDER SAMPLES

Open Air™ 411 Colorline



106976 BLACK



106977 IRON



106978 FLANNEL



106979 CHARCOAL



106980 NATURAL



106981 NICKEL



106982 GRANITE



106983 STONE



106984 LINEN

Specifications

Modular, 25cm x 1m	163410AK0G
Backing System	CQuest™GB
Yarn Manufacturer	Aquafil
Yarn System	100% Recycled Content Nylon
Color System	100% Solution Dye
Construction	Tufted Textured Loop
Preservative Protection	Intersept®
Soil/Stain Protection	Protek2™
Pile Thickness	0.093 in., 2.4 mm
Pile Density	6,968
Total Recycled Content	83%
Indoor Air Quality	CRI Green Label Plus #GLP0820

Installation Methods



ASHLAR



HERRINGBONE



BROWSE IMAGES
ORDER SAMPLES



PRODUCT OPEN AIR 411 COLOR 106978 FLANNEL INSTALLED ASHLAR
PRODUCT ON LINE™ COLOR 103798 LIME INSTALLED PATTERN BY TILE



Open Air™ 416 Colorline



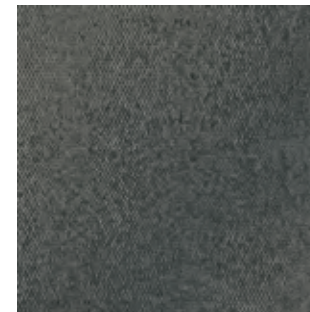
107021 BLACK



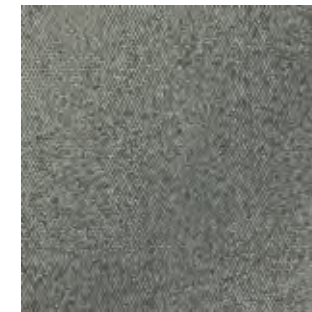
107022 IRON



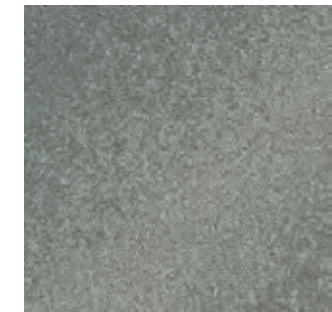
107023 FLANNEL



107024 CHARCOAL



107025 NATURAL



107026 NICKEL



107027 GRANITE



107028 STONE



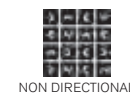
107029 LINEN

Shared elements create visual connection and pattern progression from **Open Air 416** to **Open Air 417**. Reference page 55 for an example.

Specifications

Modular, 50cm x 50cm	147500250G
Backing System	CQuest™GB
Yarn Manufacturer	Aquafil
Yarn System	100% Recycled Content Nylon
Color System	100% Solution Dye
Construction	Tufted Textured Loop
Preservative Protection	Intersept®
Soil/Stain Protection	Protekt2™
Pile Thickness	0.093 in., 2.4 mm
Pile Density	7,355
Total Recycled Content	83%
Indoor Air Quality	CRI Green Label Plus #GLP0820

Installation Methods

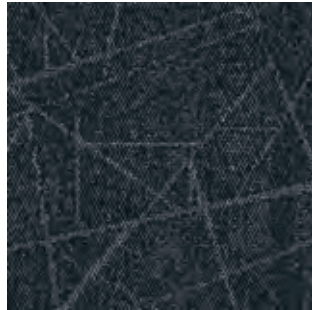


NON DIRECTIONAL

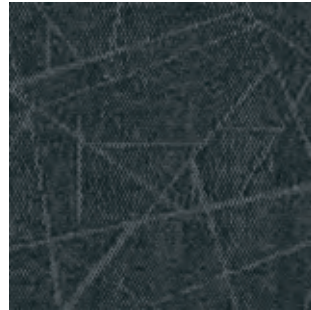


BROWSE IMAGES
ORDER SAMPLES

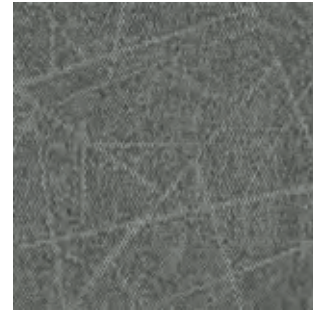
Open Air™ 420 Colorline



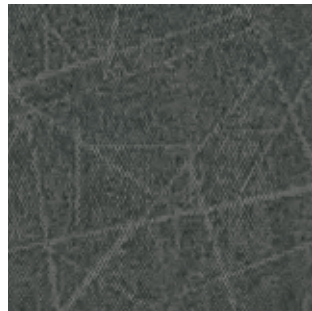
107057 BLACK



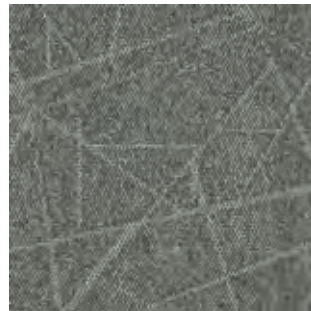
107058 IRON



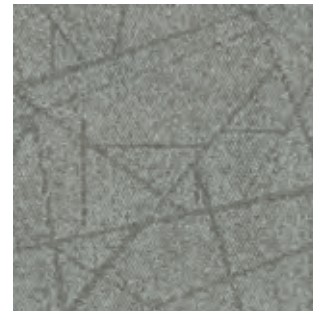
107059 FLANNEL



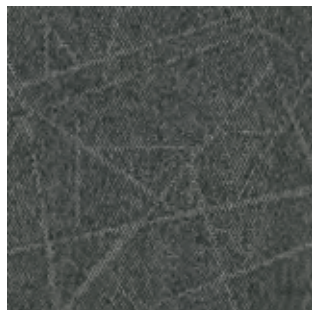
107060 CHARCOAL



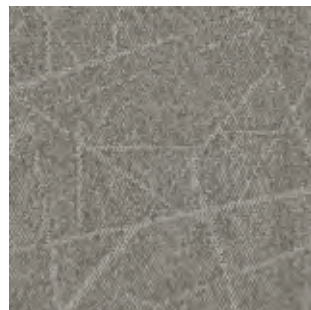
107061 NATURAL



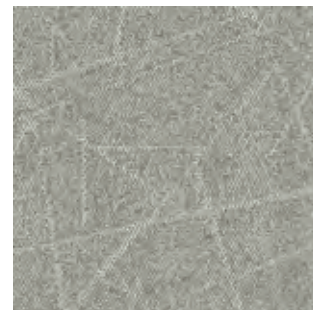
107062 NICKEL



107063 GRANITE



107064 STONE



107065 LINEN

Specifications

Modular, 50cm x 50cm	147540250G
Backing System	CQuest™GB
Yarn Manufacturer	Aquafil
Yarn System	100% Recycled Content Nylon
Color System	100% Solution Dye
Construction	Tufted Textured Loop
Preservative Protection	Intersept®
Soil/Stain Protection	Protekt2™
Pile Thickness	0.093 in., 2.4 mm
Pile Density	6,968
Total Recycled Content	83%
Indoor Air Quality	CRI Green Label Plus #GLP0820

Installation Methods



MONOLITHIC



BROWSE IMAGES
ORDER SAMPLES



PRODUCT OPEN AIR 420 COLOR 107062 NICKEL INSTALLED MONOLITHIC



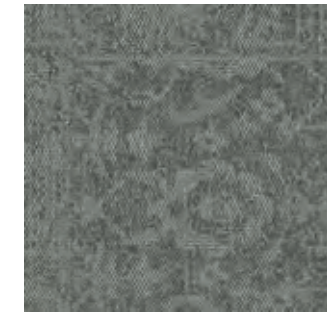
Open Air™ 421 Colorline



107066 BLACK



107067 IRON



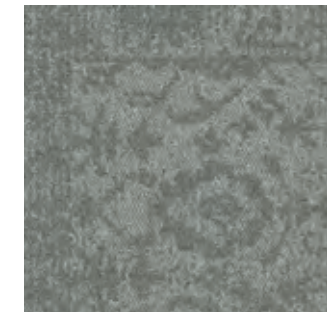
107068 FLANNEL



107069 CHARCOAL



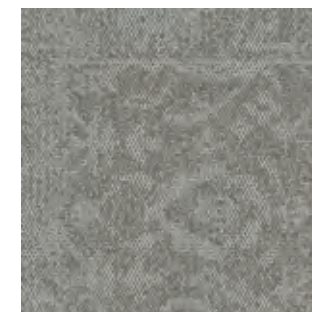
107070 NATURAL



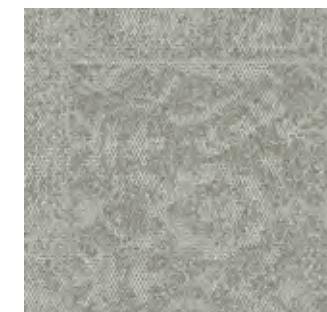
107071 NICKEL



107072 GRANITE



107073 STONE

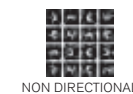


107074 LINEN

Specifications

Modular, 50cm x 50cm	147550250G
Backing System	CQuest™GB
Yarn Manufacturer	Aquafil
Yarn System	100% Recycled Content Nylon
Color System	100% Solution Dye
Construction	Tufted Textured Loop
Preservative Protection	Intersept®
Soil/Stain Protection	Protek2™
Pile Thickness	0.093 in., 2.4 mm
Pile Density	6,968
Total Recycled Content	83%
Indoor Air Quality	CRI Green Label Plus #GLP0820

Installation Methods



NON DIRECTIONAL

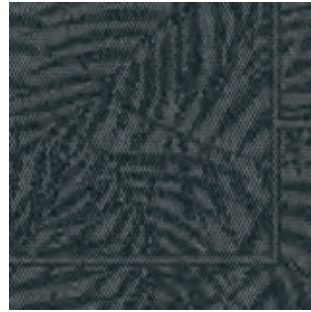


BROWSE IMAGES
ORDER SAMPLES

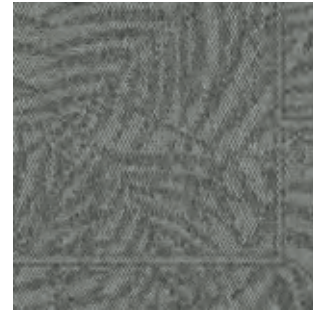
Open Air™ 422 Colorline



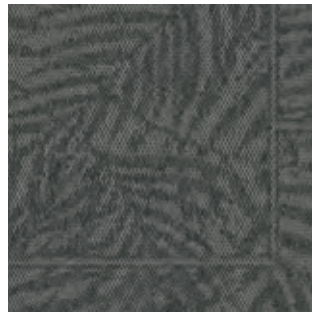
107075 BLACK



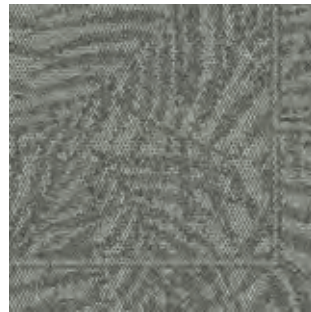
107076 IRON



107077 FLANNEL



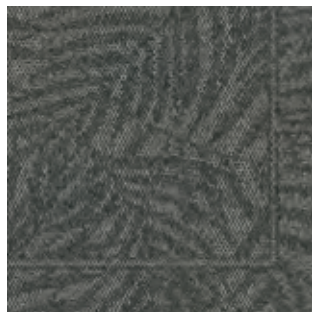
107078 CHARCOAL



107079 NATURAL



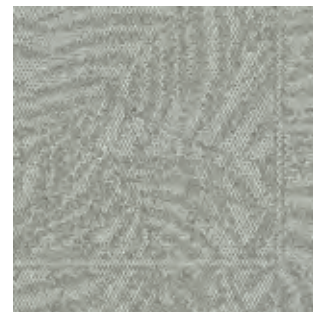
107080 NICKEL



107081 GRANITE



107082 STONE



107083 LINEN

Specifications

Modular, 50cm x 50cm	147560250G
Backing System	CQuest™GB
Yarn Manufacturer	Aquafil
Yarn System	100% Recycled Content Nylon
Color System	100% Solution Dye
Construction	Tufted Textured Loop
Preservative Protection	Intersept®
Soil/Stain Protection	Protekt ² ™
Pile Thickness	0.093 in., 2.4 mm
Pile Density	6,968
Total Recycled Content	83%
Indoor Air Quality	CRI Green Label Plus #GLP0820

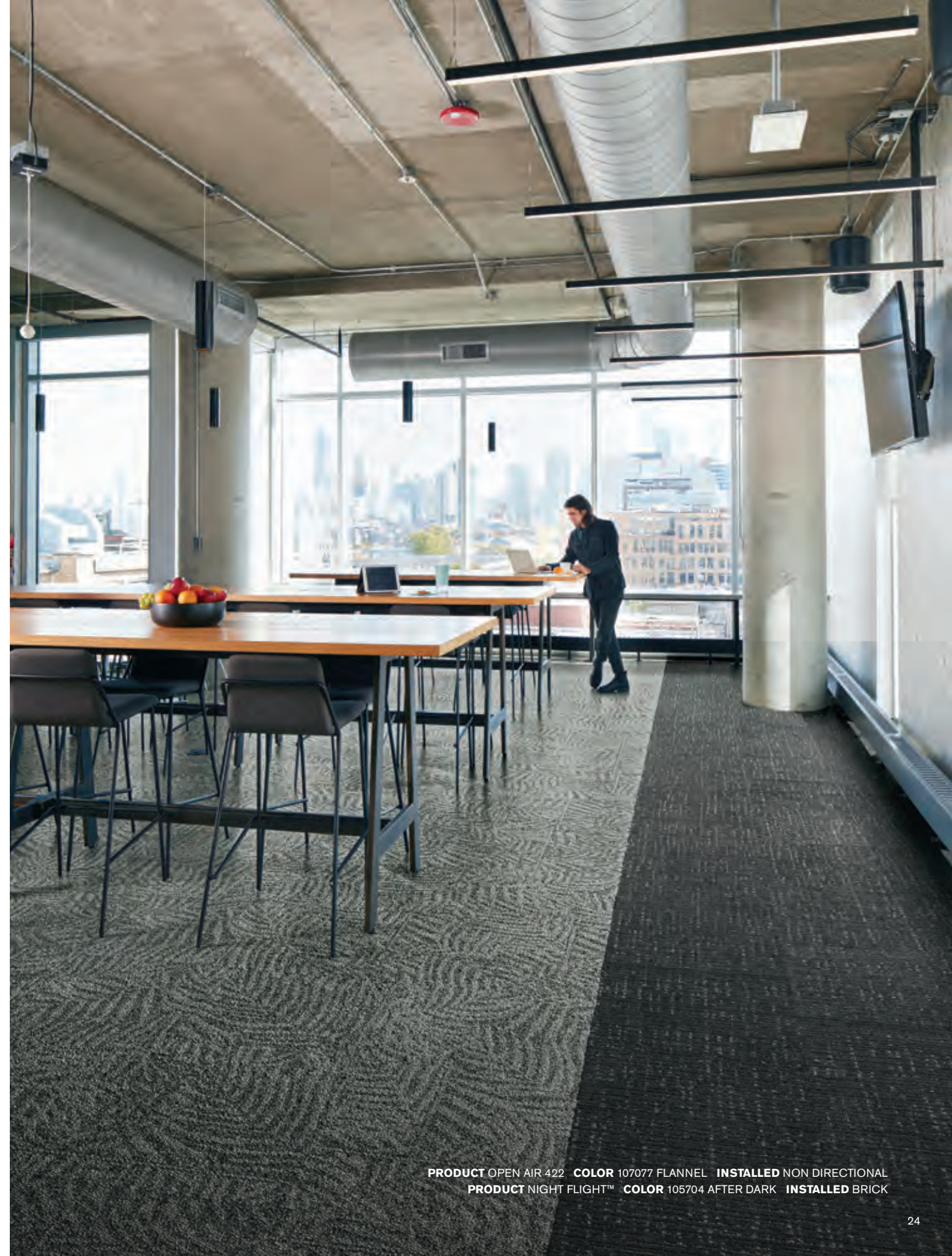
Installation Methods



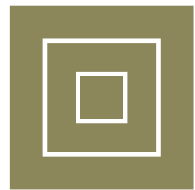
NON DIRECTIONAL



BROWSE IMAGES
ORDER SAMPLES



PRODUCT OPEN AIR 422 COLOR 107077 FLANNEL INSTALLED NON DIRECTIONAL
PRODUCT NIGHT FLIGHT™ COLOR 105704 AFTER DARK INSTALLED BRICK



Geometric Patterns

403 | 413 | 417
412 | 414 |





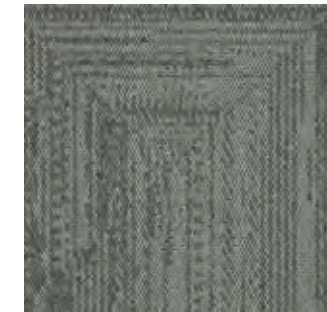
Open Air™ 403 Colorline



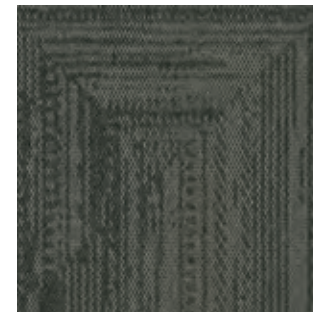
106727 BLACK



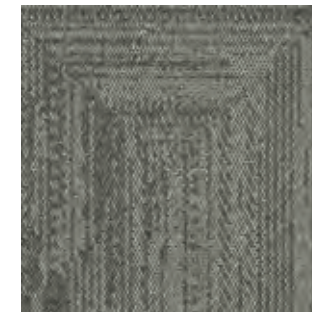
106728 IRON



106729 FLANNEL



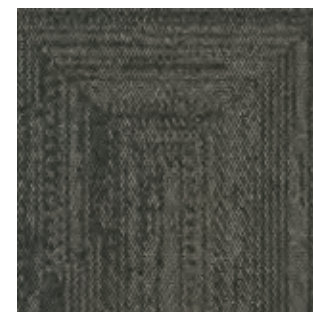
106730 CHARCOAL



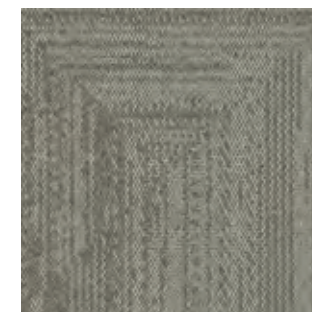
106731 NATURAL



106732 NICKEL



106733 GRANITE



106734 STONE



106735 LINEN

Specifications **i2**

Modular, 50cm x 50cm	163310250G
Backing System	CQuest™GB
Yarn Manufacturer	Aquafil
Yarn System	100% Recycled Content Nylon
Color System	100% Solution Dye
Construction	Tufted Textured Loop
Preservative Protection	Intersept®
Soil/Stain Protection	Protek2™
Pile Thickness	0.083 in., 2.1 mm
Pile Density	8,241
Total Recycled Content	83%
Indoor Air Quality	CRI Green Label Plus #GLP0820

Installation Methods

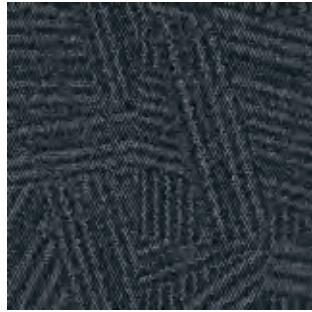


NON DIRECTIONAL

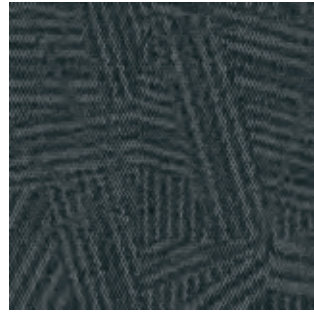


BROWSE IMAGES
ORDER SAMPLES

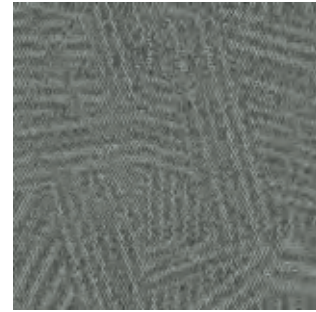
Open Air™ 412 Colorline



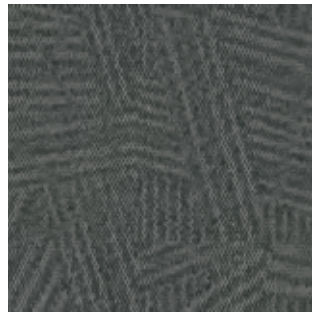
106985 BLACK



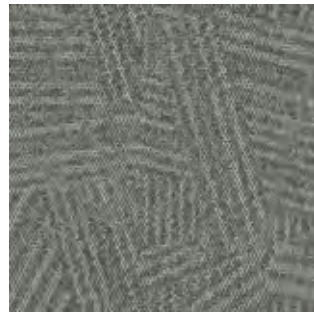
106986 IRON



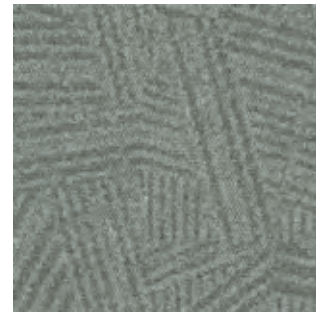
106987 FLANNEL



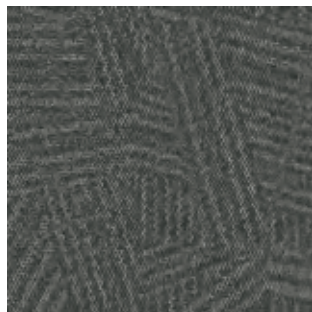
106988 CHARCOAL



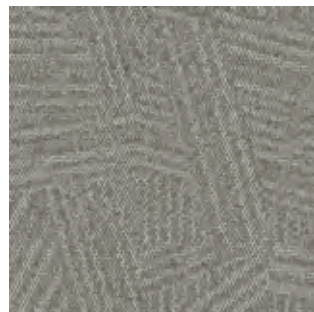
106989 NATURAL



106990 NICKEL



106991 GRANITE



106992 STONE



106993 LINEN

Specifications

Modular, 50cm x 50cm	163420250G
Backing System	CQuest™GB
Yarn Manufacturer	Aquafil
Yarn System	100% Recycled Content Nylon
Color System	100% Solution Dye
Construction	Tufted Textured Loop
Preservative Protection	Intersept®
Soil/Stain Protection	Protekt™
Pile Thickness	0.093 in., 2.4 mm
Pile Density	7,355
Total Recycled Content	83%
Indoor Air Quality	CRI Green Label Plus #GLP0820

Installation Methods



MONOLITHIC



BROWSE IMAGES
ORDER SAMPLES



PRODUCT OPEN AIR 412 COLOR 106985 BLACK INSTALLED MONOLITHIC
PRODUCT AE317 COLOR 105829 AZURE INSTALLED ASHLAR



Open Air™ 413 Colorline



106994 BLACK



106995 IRON



106996 FLANNEL



106997 CHARCOAL



106998 NATURAL



106999 NICKEL



107000 GRANITE



107001 STONE



107002 LINEN

Specifications

Modular, 50cm x 50cm	163430250G
Backing System	CQuest™GB
Yarn Manufacturer	Aquafil
Yarn System	100% Recycled Content Nylon
Color System	100% Solution Dye
Construction	Tufted Textured Loop
Preservative Protection	Intersept®
Soil/Stain Protection	Protekt™
Pile Thickness	0.093 in., 2.4 mm
Pile Density	6,968
Total Recycled Content	83%
Indoor Air Quality	CRI Green Label Plus #GLP0820

Installation Methods



MONOLITHIC



BROWSE IMAGES
ORDER SAMPLES

Open Air™ 414 Colorline



107003 BLACK



107004 IRON



107005 FLANNEL



107006 CHARCOAL



107007 NATURAL



107008 NICKEL



107009 GRANITE



107010 STONE



107011 LINEN

Specifications **i2**

Modular, 50cm x 50cm	163440250G
Backing System	CQuest™GB
Yarn Manufacturer	Aquafil
Yarn System	100% Recycled Content Nylon
Color System	100% Solution Dye
Construction	Tufted Textured Loop
Preservative Protection	Intersept®
Soil/Stain Protection	Protekt2™
Pile Thickness	0.093 in., 2.4 mm
Pile Density	6,968
Total Recycled Content	83%
Indoor Air Quality	CRI Green Label Plus #GLP0820

Installation Methods



NON DIRECTIONAL



BROWSE IMAGES
ORDER SAMPLES



PRODUCT OPEN AIR 414 COLOR 107007 NATURAL INSTALLED NON DIRECTIONAL
PRODUCT AE317 COLOR 105824 PERSIMMON INSTALLED ASHLAR



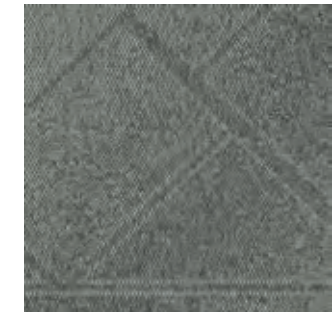
Open Air™ 417 Colorline



107030 BLACK



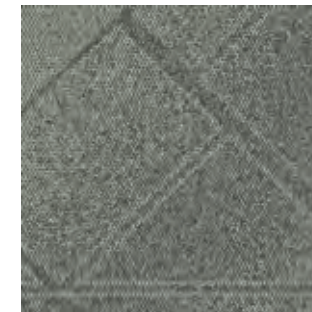
107031 IRON



107032 FLANNEL



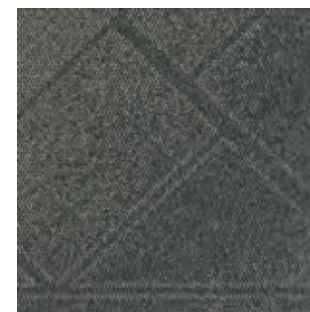
107033 CHARCOAL



107034 NATURAL



107035 NICKEL



107036 GRANITE



107037 STONE



107038 LINEN

Shared elements create visual connection and pattern progression from **Open Air 416** to **Open Air 417**. Reference page 55 for an example.

Specifications

Modular, 50cm x 50cm	147510250G
Backing System	CQuest™GB
Yarn Manufacturer	Aquafil
Yarn System	100% Recycled Content Nylon
Color System	100% Solution Dye
Construction	Tufted Textured Loop
Preservative Protection	Intersept®
Soil/Stain Protection	Protekt2™
Pile Thickness	0.093 in., 2.4 mm
Pile Density	6,968
Total Recycled Content	83%
Indoor Air Quality	CRI Green Label Plus #GLP0820

Installation Methods



NON DIRECTIONAL



BROWSE IMAGES
ORDER SAMPLES



Linear Patterns

| 423 |

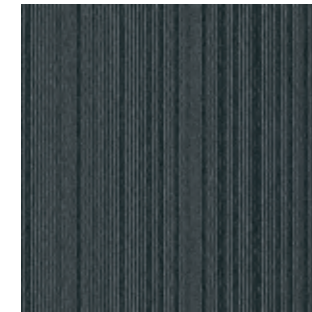




Open Air™ 423 Colorline



107084 BLACK



107085 IRON



107086 FLANNEL



107087 CHARCOAL



107088 NATURAL



107089 NICKEL



107090 GRANITE



107091 STONE



107092 LINEN

Specifications

Modular, 50cm x 50cm	147570250G
Backing System	CQuest™GB
Yarn Manufacturer	Aquafil
Yarn System	100% Recycled Content Nylon
Color System	100% Solution Dye
Construction	Tufted Textured Loop
Preservative Protection	Intersept®
Soil/Stain Protection	Protekt™
Pile Thickness	0.093 in., 2.4 mm
Pile Density	6,968
Total Recycled Content	83%
Indoor Air Quality	CRI Green Label Plus #GLP0820

Installation Methods



ASHLAR



BRICK



MONOLITHIC



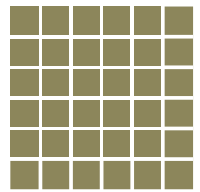
NON DIRECTIONAL



QUARTER-TURN



BROWSE IMAGES
ORDER SAMPLES



Textured Patterns

401 | 408 | 418
407 | 415 | 419





Open Air™ 401 Colorline



106772 BLACK



106773 IRON



106774 FLANNEL



106775 CHARCOAL



106776 NATURAL



106777 NICKEL



106778 GRANITE



106779 STONE



106780 LINEN

Specifications

Modular, 25cm x 1m	163360AK0G
Backing System	CQuest™GB
Yarn Manufacturer	Aquafil
Yarn System	100% Recycled Content Nylon
Color System	100% Solution Dye
Construction	Tufted Textured Loop
Preservative Protection	Intersept®
Soil/Stain Protection	Protekt2™
Pile Thickness	0.076 in., 1.9 mm
Pile Density	8,526
Total Recycled Content	83%
Indoor Air Quality	CRI Green Label Plus #GLP0820

Installation Methods



ASHLAR



HERRINGBONE



BROWSE IMAGES
 ORDER SAMPLES

Open Air™ 407 Colorline



106939 BLACK



106940 IRON



106941 FLANNEL



106942 CHARCOAL



106943 NATURAL



106944 NICKEL



106945 GRANITE



106946 STONE



106947 LINEN

Specifications

Modular, 25cm x 1m	163370AK0G
Backing System	CQuest™GB
Yarn Manufacturer	Aquafil
Yarn System	100% Recycled Content Nylon
Color System	100% Solution Dye
Construction	Tufted Textured Loop
Preservative Protection	Intersept®
Soil/Stain Protection	Protekt2™
Pile Thickness	0.093 in., 2.4 mm
Pile Density	6,968
Total Recycled Content	83%
Indoor Air Quality	CRI Green Label Plus #GLP0820

Installation Methods



ASHLAR



HERRINGBONE



BROWSE IMAGES
ORDER SAMPLES



PRODUCT OPEN AIR 407 COLOR 106943 NATURAL INSTALLED ASHLAR



Open Air™ 408 Colorline



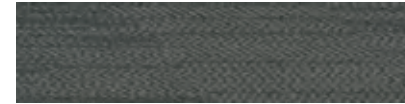
106948 BLACK



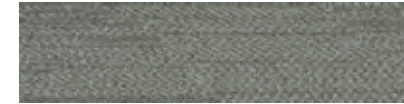
106949 IRON



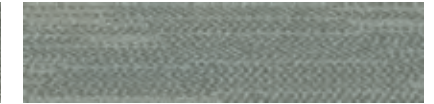
106950 FLANNEL



106951 CHARCOAL



106952 NATURAL



106953 NICKEL



106954 GRANITE



106955 STONE



106956 LINEN

Specifications

Modular, 25cm x 1m	163380AK0G
Backing System	CQuest™GB
Yarn Manufacturer	Aquafil
Yarn System	100% Recycled Content Nylon
Color System	100% Solution Dye
Construction	Tufted Textured Loop
Preservative Protection	Intersept®
Soil/Stain Protection	Protek2™
Pile Thickness	0.093 in., 2.4 mm
Pile Density	6,968
Total Recycled Content	83%
Indoor Air Quality	CRI Green Label Plus #GLP0820

Installation Methods



ASHLAR



HERRINGBONE



BROWSE IMAGES
ORDER SAMPLES

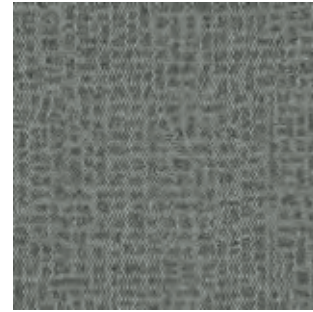
Open Air™ 415 Colorline



107012 BLACK



107013 IRON



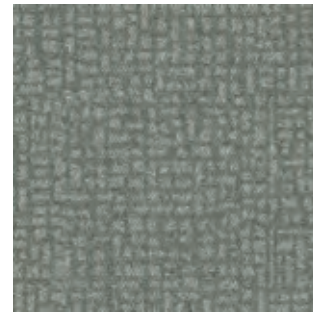
107014 FLANNEL



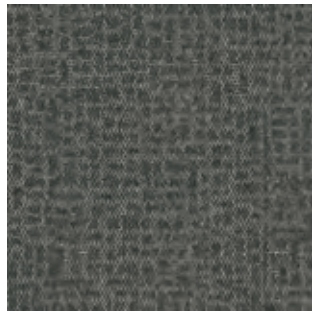
107015 CHARCOAL



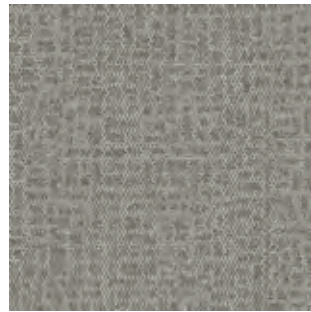
107016 NATURAL



107017 NICKEL



107018 GRANITE



107019 STONE



107020 LINEN

Specifications

Modular, 50cm x 50cm	163450250G
Backing System	CQuest™GB
Yarn Manufacturer	Aquafil
Yarn System	100% Recycled Content Nylon
Color System	100% Solution Dye
Construction	Tufted Textured Loop
Preservative Protection	Intersept®
Soil/Stain Protection	Protekt™
Pile Thickness	0.093 in., 2.4 mm
Pile Density	6,968
Total Recycled Content	83%
Indoor Air Quality	CRI Green Label Plus #GLP0820

Installation Methods



MONOLITHIC



BROWSE IMAGES
ORDER SAMPLES



CARPET PRODUCT OPEN AIR 415 COLOR 107020 LINEN
LVT PRODUCT LEVEL SET | TEXTURED STONES COLOR A00308 LIGHT CONCRETE INSTALLED MONOLITHIC



Open Air™ 418 Colorline



107039 BLACK



107040 IRON



107041 FLANNEL



107042 CHARCOAL



107043 NATURAL



107044 NICKEL



107045 GRANITE



107046 STONE

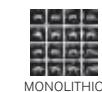


107047 LINEN

Specifications

Modular, 50cm x 50cm	147520250G
Backing System	CQuest™GB
Yarn Manufacturer	Aquafil
Yarn System	100% Recycled Content Nylon
Color System	100% Solution Dye
Construction	Tufted Textured Loop
Preservative Protection	Intersept®
Soil/Stain Protection	Protekt ² ™
Pile Thickness	0.081 in., 2.1 mm
Pile Density	7,556
Total Recycled Content	83%
Indoor Air Quality	CRI Green Label Plus #GLP0820

Installation Methods



MONOLITHIC



BROWSE IMAGES
ORDER SAMPLES

Open Air™ 419 Colorline



107048 BLACK



107049 IRON



107050 FLANNEL



107051 CHARCOAL



107052 NATURAL



107053 NICKEL



107054 GRANITE



107055 STONE



107056 LINEN

Specifications

Modular, 50cm x 50cm	147530250G
Backing System	CQuest™GB
Yarn Manufacturer	Aquafil
Yarn System	100% Recycled Content Nylon
Color System	100% Solution Dye
Construction	Tufted Textured Loop
Preservative Protection	Intersept®
Soil/Stain Protection	Protekt ² ™
Pile Thickness	0.093 in., 2.4 mm
Pile Density	6,968
Total Recycled Content	83%
Indoor Air Quality	CRI Green Label Plus #GLP0820

Installation Methods



MONOLITHIC



BROWSE IMAGES
ORDER SAMPLES



PRODUCT OPEN AIR 419 · COLOR 107048 BLACK · INSTALLED MONOLITHIC

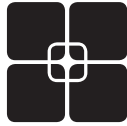


Why Our Modular Flooring?



i2® Modular Carpet

Minimize waste & save money. Interface's i2™ styles have mergeable dye lots. That means i2 tiles from different dye lots always blend with tiles of the same color, even when individual tiles are selectively replaced years later. This minimizes the need for attic stock and saves money. And i2 styles that install non directionally generate an average of only 1.5% installation waste as compared to 3-4% for typical modular carpet and an average of 14% for traditional roll carpet.



TacTiles™

No glue installation. Our revolutionary TacTiles installation system eliminates the need for glue, adhering carpet tiles securely together to form a floor that “floats” for greater flexibility, easier replacement and long-term performance. The result? Less mess, less waste and virtually no VOCs, not to mention an environmental footprint that is over 90% lower than that of traditional glue adhesives. TacTiles are approved for use on GlasBac™, GlasBacRE, CQuest™GB, Graphlar™ and Graphlex™.



Intersept®

Mold protection. Our proprietary preservative, Intersept, protects our modular carpet against mold growth and odor-causing bacteria—guaranteed. Intersept treated carpet, with proper maintenance, shows no mold or bacterial growth when tested per the ASTM E2471 Standard Test Method. Intersept is EPA approved for safe use in carpet, water insoluble and contains no halogens, heavy metals, phenols or formaldehyde. Intersept is standard in Interface carpet tile products backed with GlasBac, GlasBacRE, CQuestGB, ReadyBac™, and CushionBac Renew™.



ReEntry™

Keep flooring out of landfills. Through our ReEntry program, we reclaim our carpet tile and Sound Choice™ LVT. Vinyl backed carpet tile is recycled into new CQuest™GB carpet tile backing. The result? Carpet tile products with up to 85% total recycled content, including as much as 25% post-consumer content.



Sustainability Transparency

Transparency and certified sustainability leadership come standard on Interface products, including published ingredients in HPDs (Health Product Declarations) and published EPDs (Environmental Product Declarations), which are based on full life cycle assessment (LCA). And, Interface carpet products are certified to the NSF 140 Sustainable Carpet Assessment Standard. Additionally, Interface flooring and recommended adhesives are 3rd party certified for low VOC emissions in compliance with California Department of Public Health (CDPH) Standard Method v1.2–2017. Carpet products made in our US facilities are made with 99% renewable energy.



Carbon Neutral Floors™

The flooring products that we sell, including carpet tile, are carbon neutral across their full product life cycle through our third party verified Carbon Neutral Floors™ program. To find out more, visit interface.com/carbonneutralfloors.



Environmental Product Declaration (EPD) – A statement of product ingredients and environmental impacts over the entire life cycle of a product. A comprehensive life cycle assessment (LCA) is performed to ISO standards to develop an EPD, after which both the EPD and LCA must be third party verified.



Gold Certified
NSF 140 • 2017

Sustainable Assessment for Carpet – The only carpet sustainability standard in North America that evaluates the environmental impact of carpet for its entire lifecycle.



CRI Green Label Plus – An independent testing program that identifies carpet and adhesives with very low emissions of VOCs to help improve indoor air quality.

Samples

Order samples at interface.com. You'll receive email order confirmations, 24/7 access to order status and more. Not near a computer? You can also request samples by calling one of the numbers below.

United States 1.877.605.1500
Canada 1.866.398.3192

Brazil + 5511.2196.0900
Latin America + 52.55.6395.5100

interface.com

Register at interface.com to:

- Browse products and order samples
- View carpet in a variety of room scenes
- Browse floor designs, change colors, view as a grid or in a room, download and share
- Check order status and inventory availability
- Sign up to get the latest information on Interface products and news

InterCircle Sample Return

Help us close the loop on the carpet sampling process. Through our InterCircle Sample Return program, sample materials stay out of the landfill and are re-used as samples until it is time to recycle them into new carpet. By reducing sample production material and diverting old materials from the landfill, we can reduce our overall environmental footprint.

Call 1.877.605.1500 (U.S.) or 1.866.398.3192 (Canada) to order a sample return bag with a prepaid return label.

All product specifications reflect averages derived from product sample testing, are subject to normal manufacturing and testing tolerances and inherent pattern variances, and may be changed without notice. For more information about these and other important attributes of the product(s) described herein, including recycled content and product warranty information, please see interface.com/disclaimer.



Printed on 50% post consumer waste (PCW) fiber manufactured using wind power.

We have tried our very best to accurately represent product colors. However, due to the nature of printed materials, color of actual products may vary slightly. Please request a sample to see actual product color.