

On Line

Interface®

On Line™

On Line is the graphic standard for the floor with its pure color and bold proportions. Go for color blocking—create a big splash or try colors that clash. Explore the fundamentals of flattery—earthy shades are the perfect companions to ground a brighter hue. Vivid or subdued, On Line has the right shape to support the design.

Pair it with companion Off Line™ to create visual interest with a cohesive color story or add other styles and tile dimensions to bring an entirely different energy to the interior. On Line offers a broad spectrum of possibilities in service to your design and the identity you've imagined for your space.









Specifications

Modular, 25 cm x 1 m	13870
Yarn Manufacturer	Aquafil
Yarn System	100% Recycled Content Nylon
Dye Method	100% Solution Dyed
Construction	Tufted Textured Loop
Preservative Protection	Intersept®
Soil/Stain Protection	Protek ² ™
Pile Thickness	0.12 in, 3 mm
Pile Density	6,146 oz/yd ³
Total Recycled Content	69%
Indoor Air Quality	CRI Green Label Plus #GLP0820

[View the full product specification on interface.com](#)

Installation Methods



ASHLAR



HERRINGBONE



BROWSE IMAGES
ORDER SAMPLES

PRODUCT ON LINE **COLORS INK & BERRY** INSTALLED PATTERN BY TILE

On Line™ Color Range



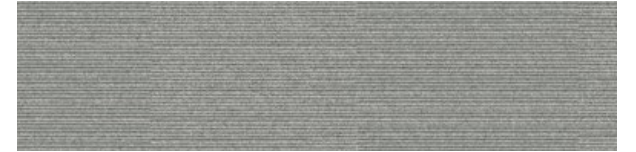
103785 BISCUIT



105254 DUNE



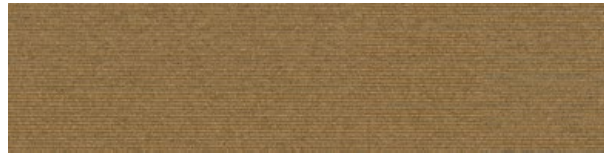
105262 PIGEON



103791 CLOUD



105258 DRIFTWOOD



105252 LICHEN



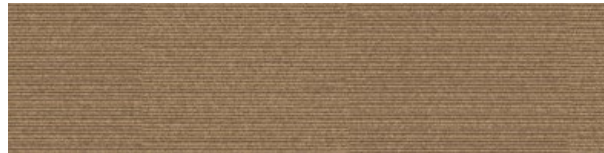
105259 FOG



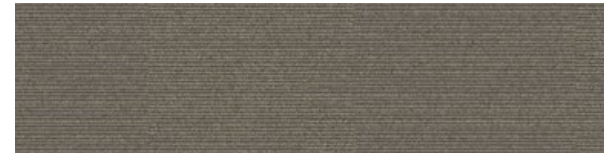
103790 STONE



103783 MUSHROOM



103784 TOPAZ



103789 SAGE



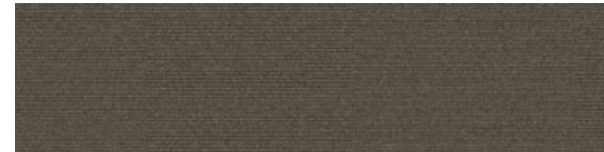
103787 PEWTER



105253 PUMICE



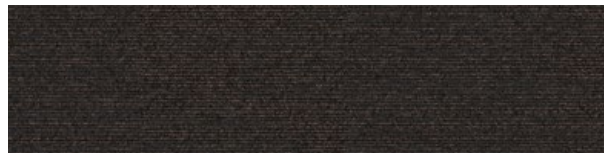
105255 SMOKE



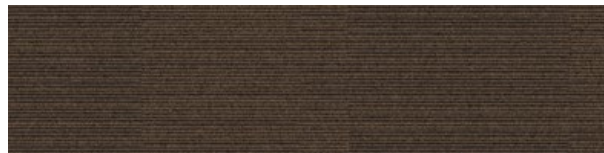
105263 TITANIUM



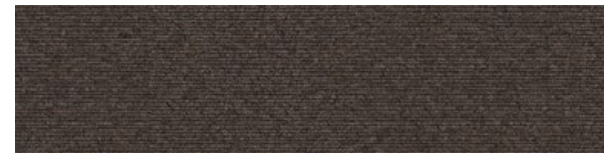
105260 GRANITE



103780 PEAT



103782 COFFEE



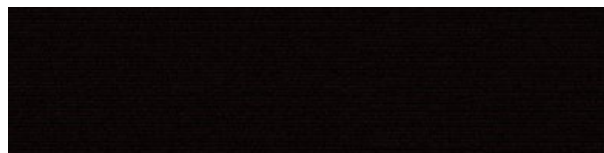
103781 LOAM



103786 INK



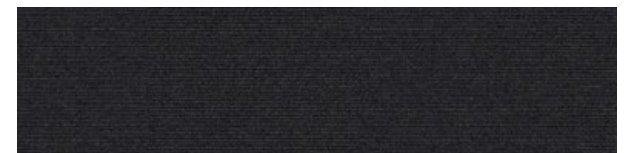
105256 SABLE



105257 ESPRESSO

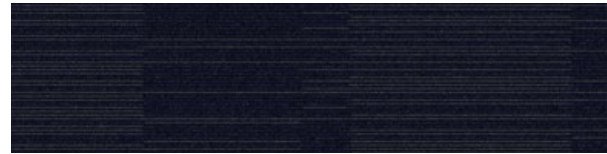


103788 PEPPER



105261 STORM

On Line™ Color Range (cont'd)



103793 INDIGO



105267 COBALT



105268 CITRON



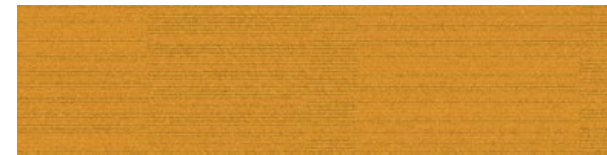
103802 CANARY



103795 OCEAN



103797 AZURE



105269 MARIGOLD



103800 MUSTARD



103799 LAPIS



105266 AQUAMARINE



103803 MANDARIN



105834 PERSIMMON



103794 LAGOON



103792 PEACOCK



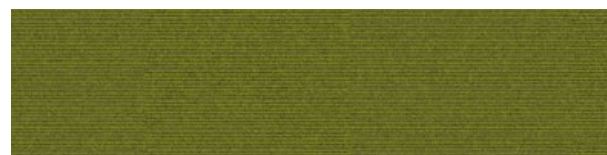
105270 ORANGE



103801 POPPY



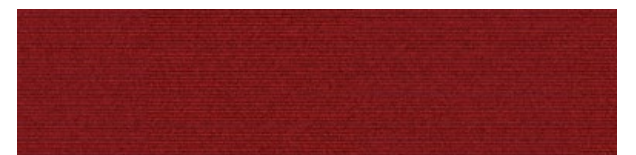
105836 EUCALYPTUS



103798 LIME



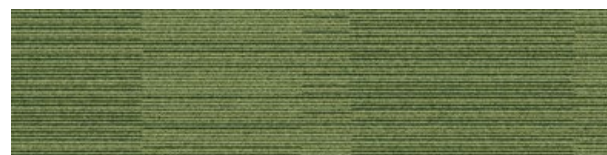
105275 MAGENTA



105272 BERRY



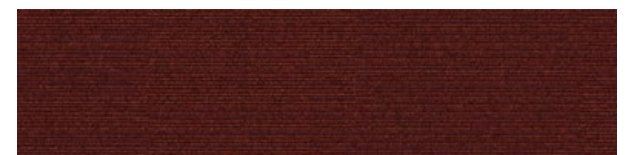
105264 GRASS



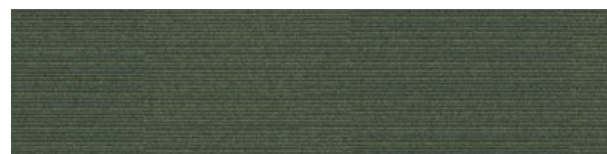
105835 LEAF



105274 IRIS



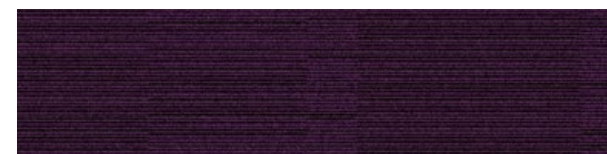
105271 RUST



103796 FOREST

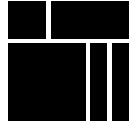


105265 EMERALD



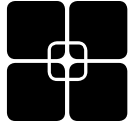
105273 PURPLE

Why Our Modular Flooring?



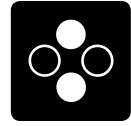
Modular Flooring

Performance and flexibility. Interface's standard backing systems set the industry standard for modular performance. Tiles stay on the floor with no upcurl, no taping and no rippling effect, yet are easy to selectively replace. Our modular carpet is easier to handle than bulky roll carpet and produces an average of just 3-4% waste compared to roll carpet's average of 14%. And it installs seamlessly with our LVT, no transition strips needed.



TacTiles™

No glue installation. Our revolutionary TacTiles installation system eliminates the need for glue, adhering tiles securely together to form a floor that “floats” for greater flexibility, easier replacement and long-term performance. The result? Less mess, less waste and virtually no VOCs, not to mention an environmental footprint that is over 90% lower than that of traditional glue adhesives. TacTiles are approved for use on GlasBac™, CQuest™GB, CQuest™Bio and CQuest™BioX.



Intersept®

Mold protection. Our proprietary preservative, Intersept, protects our modular carpet against mold growth and odor-causing bacteria—guaranteed. Intersept treated carpet, with proper maintenance, shows no mold or bacterial growth when tested per the ASTM E2471 Standard Test Method. Intersept is EPA approved for safe use in carpet, water insoluble and contains no halogens, heavy metals, phenols or formaldehyde. Intersept is standard in Interface carpet tile products backed with GlasBac, CQuestGB, ReadyBac™ and CushionBac Renew™.



Environmental Product Declaration (EPD)

A statement of product ingredients and environmental impacts over the entire life cycle of a product. A comprehensive life cycle assessment (LCA) is performed to ISO standards to develop an EPD, after which both the EPD and LCA must be third party verified.



CRI Green Label Plus

An independent testing program that identifies carpet and adhesives with very low emissions of VOCs to help improve indoor air quality.



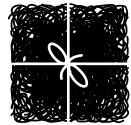
Health Product Declaration (HPD)

A transparency tool for evaluating whether a product supports Green Chemistry. As part of our work on Health and Materials, Interface continuously reduces the environmental and health impacts of our products through elimination of materials of concern.



NSF 140 Sustainable Carpet Assessment

The only carpet sustainability standard in North America that evaluates the environmental impact of carpet for its entire life cycle.



ReEntry™

Recyclable. Through our ReEntry program we reclaim and recycle our carpet tile and Sound Choice™ LVT. ReEntry is the only third party certified recycling system among North American flooring manufacturers.



Sustainability Transparency

Transparency and certified sustainability leadership come standard on Interface products. We enlist outside partners to help us evaluate the entire product life cycle and reduce the environmental and human health impact of our flooring. And, carpet products made in our US facilities are made with 99% renewable energy.

📍 Samples

Register and order samples at [interface.com](https://www.interface.com). Not near a computer? You can also request samples by calling one of the numbers below.

United States
1.877.605.1500

Canada
1.866.398.3192

[interface.com](https://www.interface.com)

- Do more on [interface.com](https://www.interface.com)
- Browse products and order samples
- Save and share favorites
- See images of products in a variety of room scenes
- Browse floor designs, change colors, upload your own image, download and share
- Get full specifications, sustainability certifications and more
- Check order status and inventory availability
- Sign up to get the latest information on Interface products and news

InterCircle Sample Return

Help us close the loop on the carpet sampling process. Through our InterCircle Sample Return program, sample materials stay out of the landfill and are re-used as samples until it is time to recycle them into new carpet. By reducing sample production material and diverting old materials from the landfill, we can reduce our overall environmental footprint.

Call 1.877.605.1500 (U.S.) or 1.866.398.3192 (Canada) to order a sample return bag with a prepaid return label.

We have tried our very best to accurately represent product colors. However, due to the nature of printed materials, color of actual products may vary slightly. Please request a sample to see actual product color.

All product specifications reflect averages derived from product sample testing, are subject to normal manufacturing and testing tolerances and inherent pattern variances, and may be changed without notice. For more information about these and other important attributes of the product(s) described herein, including recycled content and product warranty information, please see [interface.com/disclaimer](https://www.interface.com/disclaimer).



PLEASE RECYCLE

Printed on 50% post consumer waste (PCW) fiber manufactured using wind power.

interface.com

United States Headquarters

1280 West Peachtree Street NW
Atlanta, GA 30309
1.800.634.6032

Canadian Headquarters

233 Lahr Drive
Belleville, ON K8N 5S2
1.800.267.2149 ext. 52128

CIM# IFS00603 06/2024



Climate change is undeniable. And reversible. Our mission is to prove it.
Join the #ClimateTakeBack and help create a climate fit for life.