



Nimbus

Interface®

Nimbus

We've got our heads in the clouds. We can't seem to concentrate on the conventional approach. We blend colours in an ethereal pattern that appears to have no beginning and no end, no repeat. We create possibilities where none had been considered.

Nimbus mixes all the value and interest of a non-directional style with all the possibilities that come in the 25 cm x 1 m plank. Go ahead and try it – the sky's the limit.





Nimbus Colour Range



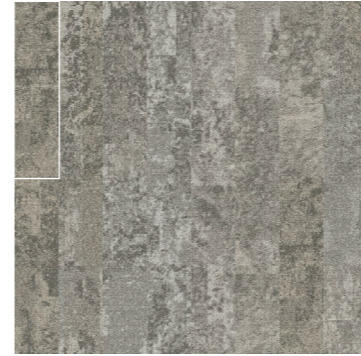
7276001 Barley



7276002 Cedar



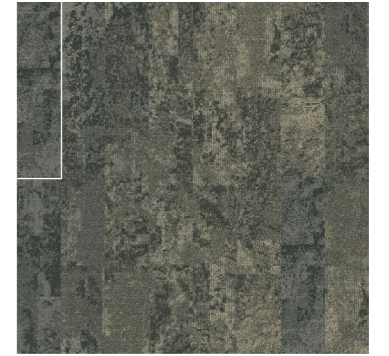
7276003 Amber



7276010 Patina



7276011 Sandstone



7276012 Feldspar



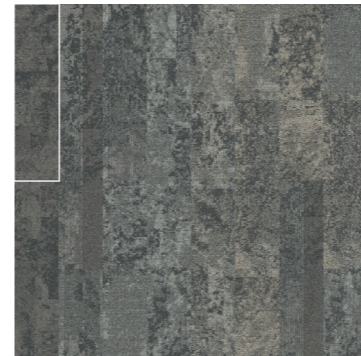
7276004 Terra Cotta



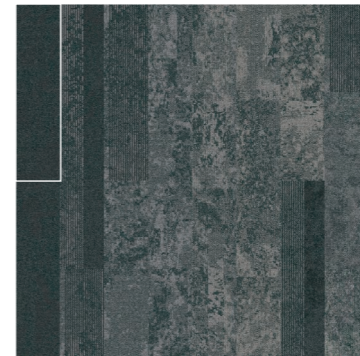
7276005 Desert



7276006 Tobacco



7276013 Slate



7276014 Charcoal



7276015 Graphite



7276007 Earth



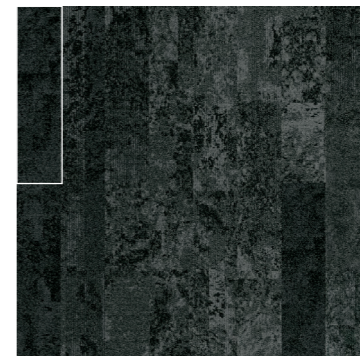
7276008 Hickory



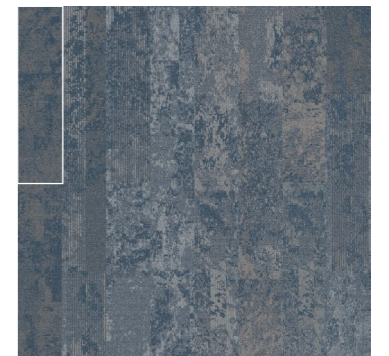
7276009 Sage



7276017 Lichen



7276016 Flint



7276018 Lapis

Nimbus has a large scale pattern over multiple tiles. The images above show the pattern over a 2 x 2 metre grid, each tile is 25 x 100 cm. We have tried our very best to accurately represent product colours. However, due to the nature of printed materials, colour of actual products may vary slightly. Please request a sample to see actual product colour.



PRODUCT NIMBUS COLOUR TOBACCO INSTALLED HERRINGBONE

Specification

Style Code	7276
Product Construction	Tufted Tip Sheared Loop
Yarn System	100% Recycled Solution Dyed Nylon
Machine Gauge	1/12
Pile Thickness	2.8 ± 0.5mm
Total Thickness	6.4 ± 0.5mm
Tile Size	25 x 100cm
ACCS (Australia only)	Commercial Heavy Duty & Stairs
Lifetime Antimicrobial	Protekt®
Soil / Stain Protection	Intersept®

[View the full product specification on interface.com](https://www.interface.com)

Installation Methods



ASHLAR



HERRINGBONE

Why Our Modular Flooring?



Modular Flooring

Performance and flexibility. Interface's standard backing systems set the industry standard for modular performance. Tiles stay on the floor with no upcurl, no tapping and no rippling effect, yet are easy to selectively replace. Our modular carpet is easier to handle than bulky roll carpet and produces an average of just 2-5% waste compared to roll carpet's average of 15%. And it installs seamlessly with our LVT, no transition strips needed.



Carbon Neutral Floors™

Create a climate fit for life. All Interface flooring sold globally is third party verified carbon neutral across the entire product lifecycle. We've taken a holistic approach to achieve carbon neutrality, first through reducing the carbon footprint of our products and then using carbon offsets for the remainder, including the emissions from raw materials, our manufacturing processes and product use to end of life.



TacTiles®

No glue installation. Our revolutionary TacTiles installation system eliminates the need for glue, adhering tiles securely together to form a floor that "floats" for greater flexibility, easier replacement and long-term performance. The result? Less mess, less waste and virtually no VOCs, not to mention an environmental footprint that is over 90% lower than that of traditional glue adhesives.



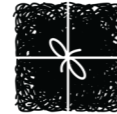
Intersept®

Mold protection. Our proprietary preservative, Intersept, protects our modular carpet against mould growth and odour-causing bacteria—guaranteed. Intersept treated carpet, with proper maintenance, shows no mould or bacterial growth when tested as per the ASTM E2471 Standard Test Method. Intersept is EPA-approved for safe use in carpet, water insoluble and contains no halogens, heavy metals, phenols or formaldehyde.



Protekt®

Stain protection. The life and performance of your flooring is extended with Protekt, our patented stain resistant coating. Protekt uses advanced technology to provide a lasting barrier against permanent soiling and staining, which simplifies the cleaning process and enhances the longevity of your carpet.



ReEntry

At Interface, an end of life solution of our products is a reality. ReEntry is our innovative programme to reclaim materials used in our product. Taking back our product at end of life is a service we provide our customers to ensure that none of the products they use will end up in landfill. Whether it is recycling into new product or re-purposing, we see our customer's waste as an opportunity for new product life.



Health Product Declaration (HPD) –

A transparency tool for evaluating whether a product supports Green Chemistry. As part of our work on Health and Materials, Interface continuously reduces the environmental and health impacts of our products through elimination of materials of concern.



15-Year Warranty

Interface products are warranted for 15 years against excessive surface wear, edge ravel, backing separation, shrinking, stretching and static electricity even under castor chair conditions.



Local Manufacturing

We combine local responsiveness with a global experience. Being part of the same communities as our customers, we foster collaborative, committed, and productive relationships. Our carpet tiles are manufactured in Australia and China, contributing to local economies and the environment.

Third Party Certifications



Environmental Product Declaration (EPD)

The Environmental Product Declaration (EPD) is a third party verified environmental certification classified as Type III that quantifies and verifies the lifecycle impacts of products and goods according to the International Standards Organization (ISO) 14025, 14040, 14044 and EN 15804. EPDs help customers that are environmentally driven to evaluate the performance of a product and to make the best decision when choosing a product. All Interface products have EPDs.



Global GreenTag GreenRate - Level A

Global GreenTag's GreenRate certification is a product rating system recognised by the Green Building Council of Australia, New Zealand and South Africa. It has been set up to meet the criteria of the Green Star® "Sustainable Products" credits. All Interface products are certified "Level A".



Environmental Certification Scheme - Level 4

ECS-certified carpet manufacturers must adhere to a code of practice that details performance standards for raw materials, manufacturing, in-service use and end-of-life treatment. Interface flooring holds the highest grading under ECS.



NSF Certification

NSF International develops public health standards and certification programs that help protect the world's food, water, consumer products and environment. Interface carpet tile products are certified "Gold".



CRI Green Label Plus

The Carpet and Rug Institute (CRI) Green Label Plus sets higher standards for indoor air quality and ensures that customers are purchasing the very lowest emitting products on the market. Interface Carpet Tiles and TacTiles have fulfilled the requirements for this certification.



Singapore Green Building Product (SGBP)

The SGBP scheme is a certification for green building products and materials which looks at the whole lifecycle of products to account for the full impact. Carpet tile products are certified "Leader" and LVT products are at "Excellent" Level.



Best Practice Guidelines for PVC

A comprehensive standard for better PVC developed by the Green Building Council of Australia under its Green Star programme. Interface holds Lloyd's Statement of Compliance (Green Building Council of Australia Best Practice Guidelines 2013) for Best Practice PVC for all products made in Australia.

Our EPDs and certifications contribute credits towards Green Building Council's Green Star® rating system.

Green Star credits are approved by the Green Building Councils of Australia and New Zealand. The internationally-recognised Green Star rating system provides independent verification that a building or community project is sustainable. Developed by the Green Building Council of Australia, Green Star is Australia's only national, voluntary, sustainability rating system for buildings and communities.

All Interface manufacturing facilities in the Asia Pacific region maintain registration to ISO 9001 Quality Management Systems and ISO 14001 Environmental Management Systems.

The visibility of joints may vary based on colour and pattern.

Production specifications are subject to normal manufacturing tolerances and may be changed without notice. Slight variation in colour among different production lots are normal and should be considered in the overall installation plan. Products covered by manufacturer's written warranty only. All other warranties, including without limitation any implied warranties of merchantability or fitness for particular purpose, are hereby disclaimed. Contact your representative for written warranty information.



Carbon Neutral Floors™

www.interface.com

Australia

Interface Australia
local toll free: 1800 804 361

India

Interface India
tel: +91 80 4613 1313

South East Asia

Interface Asia
tel: +65 6478 1510

South Korea

Interface South Korea
tel: +82 2 555 1734

Japan

Interface Japan
tel: +81 3 5733 5211

Beijing

Interface China
tel: +86 10 6590 7810

Hong Kong

Interface China
tel: +852 2802 0838

Shanghai

Interface China
tel: +86 21 6340 3868

10/2023



Climate change is undeniable. And reversible. Our mission is to prove it.
Join the #ClimateTakeBack and help create a climate fit for life.