



Printed on 50% post consumer waste (PCW) fiber manufactured using wind power.

interface.com

United States Headquarters

1280 West Peachtree Street NW
Atlanta, GA 30309
1.800.634.6032

Canadian Headquarters

233 Lahr Drive
Belleville, ON K8N 5S2
1.800.267.2149 ext.52128

Brazilian Headquarters

Av. Das Nações Unidas 14261
25 andar, sala 25 - 122, Brooklin Paulista
São Paulo 04578 - 000
Brasil
+ 5511.2196.0900

Latin American Headquarters

Montes Urales # 415 Piso 6
Lomas de Chapultepec
Miguel Hidalgo, CDMX
11000 Mexico
+ 52.55.2791.6812

CIM # IFS00904 03/2022



Climate change is undeniable. And reversible. Our mission is to prove it. Join the #ClimateTakeBack and help create a climate fit for life.

Night Lights Collection

Aglow
Glisten
Luminescent
Reflectors
Soft Glow
Translucent

Interface®



Night Lights™ Collection

Versatile. Flexible. Illuminating.

There's something electric about a night on the town. Street lights shine. Buildings buzz. Headlights illuminate the shadows. With the same energetic playfulness, the Night Lights Collection bursts with color and movement. Six unique products featuring neutral tone-on-tone bases and coordinating accent colors deliver nearly endless combinations perfect for any space.

Translucent™ features a simple, linear texture. Available in two cool and two warm grays, it's a versatile foundation on which the rest of Night Lights builds. Glisten™, Soft Glow™ and Reflectors™ evoke energy and dimensionality. Diagonals converge into star, cross-hatch and larger-scale geometric patterns. Like fragments of light dispersing into the night, these textures incorporate more playful uses of color. Luminescent™ and Aglow™ take a much bolder approach. Saturated color accents are reflected within both geometric and linear streaks, adding impact to any space.

With such a versatile collection, there's no limit to how many ways you can mix and match patterns and colors. Plus, Night Lights was designed to easily coordinate with our entire portfolio of LVT and carpet products for even greater design flexibility.

Like all Interface products, the Night Lights Collection is carbon neutral across the full product life cycle through our third-party verified **Carbon Neutral Floors™** program. Let your space shine with Night Lights Collection.







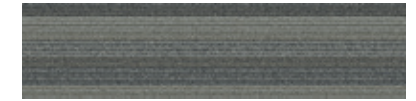
Translucent™ Colorline



107226 INK



107227 IRON



107228 NICKEL



107229 TITANIUM

Specifications

Modular, 25cm x 1m	12515
Yarn Manufacturer	Aquafil
Yarn System	100% Recycled Content Nylon
Color System	100% Solution Dyed
Construction	Tufted Pattern Loop
Preservative Protection	Intersept®
Soil/Stain Protection	Protekt2®
Pile Thickness	0.06 in., 1.5 mm
Pile Density	10,800
Total Recycled Content	Up To 83%
Indoor Air Quality	CRI Green Label Plus #GLP0820, CDPH 01350

[View the full product specification on interface.com](#)

Installation Methods



ASHLAR



HERRINGBONE



BROWSE IMAGES
ORDER SAMPLES

Aglow™ Colorline



107246 INK AZURE



107247 INK CLOUD



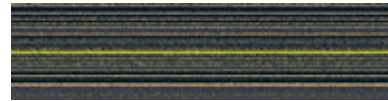
107248 IRON POPPY



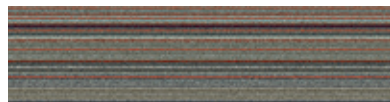
107249 IRON LAGOON



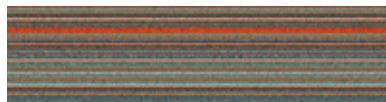
107250 IRON AZURE



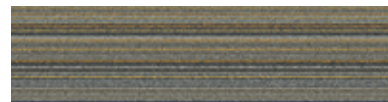
107251 IRON GRASS



107252 NICKEL POPPY



107253 NICKEL PERSIMMON



107254 NICKEL GOLD



107255 NICKEL IVY



107256 TITANIUM LAGOON



107257 TITANIUM IRIS

Specifications

Modular, 25cm x 1m	12522
Yarn Manufacturer	Aquafil
Yarn System	100% Recycled Content Nylon
Color System	100% Solution Dyed
Construction	Tufted Pattern Loop
Preservative Protection	Intersept®
Soil/Stain Protection	Protek12®
Pile Thickness	0.07 in., 1.8 mm
Pile Density	9,257
Total Recycled Content	Up To 83%
Indoor Air Quality	CRI Green Label Plus #GLP0820, CDPH 01350

View the full product specification on [interface.com](https://www.interface.com)

Installation Methods



ASHLAR



HERRINGBONE



BROWSE IMAGES
ORDER SAMPLES



PRODUCT AGLow **COLOR** 107248 IRON POPPY
LVT PRODUCT STUDIO SET™ **COLOR** A00710 POPPY **INSTALLED** ASHLAR



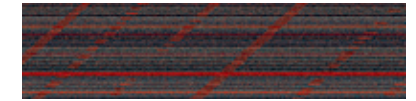
Luminescent™ Colorline



107234 INK AZURE



107235 INK CLOUD



107236 IRON POPPY



107237 IRON LAGOON



107238 IRON AZURE



107239 IRON GRASS



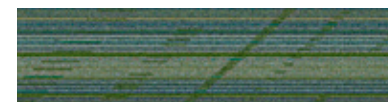
107240 NICKEL POPPY



107241 NICKEL PERSIMMON



107242 NICKEL GOLD



107243 NICKEL IVY



107244 TITANIUM LAGOON



107245 TITANIUM IRIS

Specifications

Modular, 25cm x 1m	13111
Yarn Manufacturer	Aquafil
Yarn System	100% Recycled Content Nylon
Color System	100% Solution Dyed
Construction	Tufted Textured Loop
Preservative Protection	Intersept®
Soil/Stain Protection	Protek2®
Pile Thickness	0.09 in., 2.3 mm
Pile Density	7,600
Total Recycled Content	Up To 83%
Indoor Air Quality	CRI Green Label Plus #GLP0820, CDPH 01350

View the full product specification on [interface.com](https://www.interface.com)

Installation Methods



ASHLAR



HERRINGBONE



BROWSE IMAGES
ORDER SAMPLES



Glisten™ Colorline



107230 INK



107231 IRON



107232 NICKEL



107233 TITANIUM

Specifications

Modular, 25cm x 1m	13110
Yarn Manufacturer	Aquafil
Yarn System	100% Recycled Content Nylon
Color System	100% Solution Dyed
Construction	Tufted Textured Loop
Preservative Protection	Intersept®
Soil/Stain Protection	Protekt2®
Pile Thickness	0.101 in., 2.6 mm
Pile Density	7,129
Total Recycled Content	Up To 83%
Indoor Air Quality	CRI Green Label Plus #GLP0820, CDPH 01350

Installation Methods



ASHLAR



HERRINGBONE



BROWSE IMAGES
ORDER SAMPLES

View the full product specification on [interface.com](https://www.interface.com)



PRODUCT GLISTEN COLORS 107232 NICKEL, 107231 IRON INSTALLED ASHLAR



Soft Glow™ Colorline



107258 INK AZURE



107259 INK CLOUD



107260 IRON POPPY



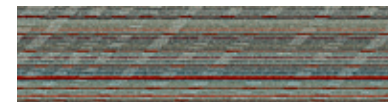
107261 IRON LAGOON



107262 IRON AZURE



107263 IRON GRASS



107264 NICKEL POPPY



107265 NICKEL PERSIMMON



107266 NICKEL GOLD



107267 NICKEL IVY



107268 TITANIUM LAGOON



107269 TITANIUM IRIS

Specifications

Modular, 25cm x 1m	13113
Yarn Manufacturer	Aquafil
Yarn System	100% Recycled Content Nylon
Color System	100% Solution Dyed
Construction	Tufted Textured Loop
Preservative Protection	Intersept®
Soil/Stain Protection	Protek12®
Pile Thickness	0.093 in., 2.4 mm
Pile Density	7,355
Total Recycled Content	Up To 83%
Indoor Air Quality	CRI Green Label Plus #GLP0820, CDPH 01350

Installation Methods



ASHLAR



HERRINGBONE



Reflectors™ Colorline



107270 INK AZURE



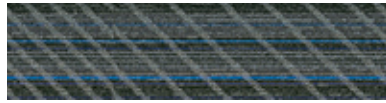
107271 INK CLOUD



107272 IRON POPPY



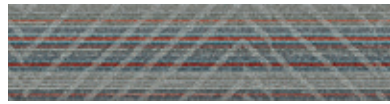
107273 IRON LAGOON



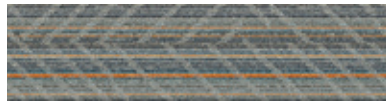
107274 IRON AZURE



107275 IRON GRASS



107276 NICKEL POPPY



107277 NICKEL PERSIMMON



107278 NICKEL GOLD



107279 NICKEL IVY



107280 TITANIUM LAGOON



107281 TITANIUM IRIS

Specifications

Modular, 25cm x 1m	13114
Yarn Manufacturer	Aquafil
Yarn System	100% Recycled Content Nylon
Color System	100% Solution Dyed
Construction	Tufted Textured Loop
Preservative Protection	Intersept®
Soil/Stain Protection	Protek12®
Pile Thickness	0.095 in., 2.4 mm
Pile Density	7,200
Total Recycled Content	Up To 83%
Indoor Air Quality	CRI Green Label Plus #GLP0820, CDPH 01350

View the full product specification on [interface.com](https://www.interface.com)

Installation Methods



ASHLAR



HERRINGBONE



BROWSE IMAGES
ORDER SAMPLES



CARPET PRODUCT REFLECTORS COLOR 107270 INK AZURE
LVT PRODUCT NATURAL WOODGRAINS COLOR A00204 BEECH INSTALLED ASHLAR



Why Our Modular Flooring?



Modular Flooring

Performance and flexibility.

Interface's standard backing systems set the industry standard for modular performance. Tiles stay on the floor with no upcurl, no tapping and no rippling effect, yet are easy to selectively replace. Our modular carpet is easier to handle than bulky roll carpet and produces an average of just 3-4% waste compared to roll carpet's average of 14%. And it installs seamlessly with our LVT, no transition strips needed.



TacTiles™

No glue installation. Our revolutionary TacTiles installation system eliminates the need for glue, adhering tiles securely together to form a floor that “floats” for greater flexibility, easier replacement and long-term performance. The result? Less mess, less waste and virtually no VOCs, not to mention an environmental footprint that is over 90% lower than that of traditional glue adhesives. TacTiles are approved for use on GlasBac, CQuest™GB, Graphlar™ and Graphlex™.



Intersept®

Mold protection. Our proprietary preservative, Intersept, protects our modular carpet against mold growth and odor-causing bacteria—guaranteed. Intersept treated carpet, with proper maintenance, shows no mold or bacterial growth when tested per the ASTM E2471 Standard Test Method. Intersept is EPA approved for safe use in carpet, water insoluble and contains no halogens, heavy metals, phenols or formaldehyde. Intersept is standard in Interface carpet tile products backed with GlasBac, CQuestGB, ReadyBac™, and CushionBac Renew™.



ReEntry™

Recyclable. Through our ReEntry program, we reclaim all Interface carpet tile. The result? Carpet tile products with up to 85% total recycled content, including as much as 25% post-consumer content.



Sustainability Transparency

Transparency and certified sustainability leadership come standard on Interface products, including published ingredients in HPDs (Health Product Declarations) and published EPDs (Environmental Product Declarations), which are based on full life cycle assessment (LCA). And, Interface carpet products are certified to the NSF 140 Sustainable Carpet Assessment Standard. Additionally, Interface flooring and recommended adhesives are 3rd party certified for low VOC emissions in compliance with California Department of Public Health (CDPH) Standard Method v1.2–2017. Carpet products made in our US facilities are made with 99% renewable energy.



Third Party Verification

The flooring products that we sell, including carpet tile, are carbon neutral across their full product life cycle through our third party verified Carbon Neutral Floors™ program. To find out more, visit interface.com/carbonneutral



Environmental Product Declaration (EPD) –

A statement of product ingredients and environmental impacts over the entire life cycle of a product. A comprehensive life cycle assessment (LCA) is performed to ISO standards to develop an EPD, after which both the EPD and LCA must be third party verified.



Sustainable Assessment for Carpet –

The only carpet sustainability standard in North America that evaluates the environmental impact of carpet for its entire lifecycle.



CRI Green Label Plus – An independent testing program that identifies carpet and adhesives with very low emissions of VOCs to help improve indoor air quality.

Samples

Order samples at interface.com. You'll receive email order confirmations, 24/7 access to order status and more. Not near a computer? You can also request samples by calling one of the numbers below.

United States 1.877.605.1500
Canada 1.866.398.3192

Brazil + 5511.2196.0900
Latin America + 52.55.2791.6812

interface.com

Register at interface.com to:

- Browse products and order samples
- View carpet in a variety of room scenes
- Browse floor designs, change colors, view as a grid or in a room, download and share
- Check order status and inventory availability
- Sign up to get the latest information on Interface products and news

InterCircle Sample Return

Help us close the loop on the carpet sampling process. Through our InterCircle Sample Return program, sample materials stay out of the landfill and are re-used as samples until it is time to recycle them into new carpet. By reducing sample production material and diverting old materials from the landfill, we can reduce our overall environmental footprint.

Call 1.877.605.1500 (U.S.) or 1.866.398.3192 (Canada) to order a sample return bag with a prepaid return label.

We have tried our very best to accurately represent product colors. However, due to the nature of printed materials, color of actual products may vary slightly. Please request a sample to see actual product color.

All product specifications reflect averages derived from product sample testing, are subject to normal manufacturing and testing tolerances and inherent pattern variances, and may be changed without notice. For more information about these and other important attributes of the product(s) described herein, including recycled content and product warranty information, please see interface.com/disclaimer.