

Nature's Course



Interface®

Nature's Course™

Journey outside the city limits and find a place to wander. Look at the path you've chosen. Notice: it is varied. There are hard and soft turns and more and less texture as you move forward. Nature's Course was inspired by this idea—random patterns we encounter that develop and recede in their own time if we allow it.

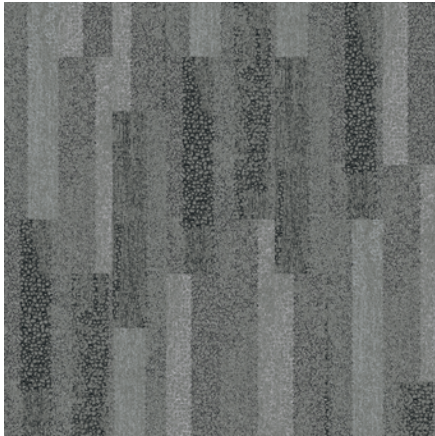
Nature's Course moves across the floor in this truly organic way. The color palette is grounded in eight complex neutrals and pairs with companion On Line™ to help you compose areas of respite and sharp definition within the floorplan.

Nature's Course is made with 100% recycled content nylon and is part of our i2® product family, designed to eliminate any concerns with blending different dye lots or selective replacement. And like all of our products around the world, it is carbon neutral ... just a few of the steps we take on our path toward creating a climate fit for life. Join the **#climatetakeback** movement.

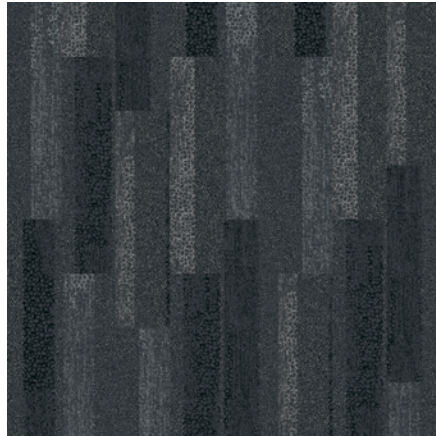




Nature's Course™ Colorline



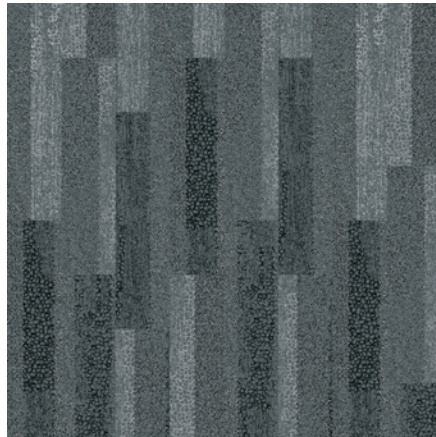
105859 FOSSIL



105860 GRAPHITE



105861 MARBLE



105862 GRANITE

Specifications



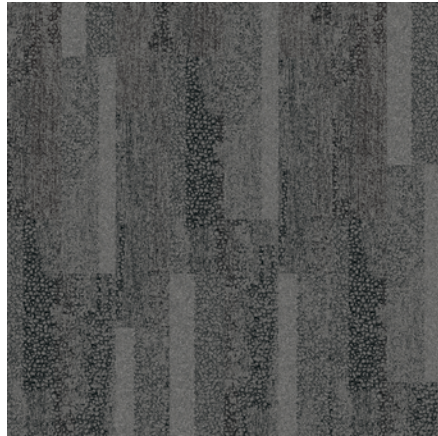
Modular, 25cm x 1m	128990AK00
Backing System	GlasBac® Tile
Yarn Manufacturer	Aquafil
Yarn System	100% Recycled Content Type 6 Nylon
Color System	100% Solution Dyed
Construction	Tufted Pattern Loop
Preservation Protection	Intersept®
Soil/Stain Protection	Protekt ² ®
Pile Thickness	0.087 in., 2.2 mm
Pile Density	7,448
Total Recycled Content	72%
Indoor Air Quality	CRI Green Label Plus #GLP0820



Nature's Course Colorline



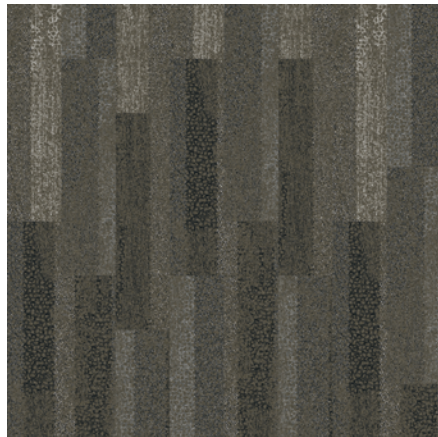
105863 MICA



105864 MINERAL



105865 SANDSTONE



105866 PEBBLE

Why Our Modular Flooring?



i2® Modular Flooring

Minimize waste & save money. Interface's i2 styles have mergeable dye lots. That means i2 tiles from different dye lots always blend with tiles of the same color, even when individual tiles are selectively replaced years later. This minimizes the need for attic stock and saves money. And i2 styles that install non directionally generate an average of only 1.5% installation waste as compared to 3-4% for typical modular carpet and an average of 14% for traditional roll carpet.



Carbon Neutral Floors™

Create a climate fit for life. All Interface flooring sold globally is third party verified carbon neutral. We've taken a holistic approach to achieve carbon neutrality, first through reducing the carbon footprint of our products and then using carbon offsets for the remainder, including the emissions from raw materials, our manufacturing processes and product use to end of life.



TacTiles®

No glue installation. Our revolutionary TacTiles installation system eliminates the need for glue, adhering tiles securely together to form a floor that "floats" for greater flexibility, easier replacement and long-term performance. The result? Less mess, less waste and virtually no VOCs, not to mention an environmental footprint that is over 90% lower than that of traditional glue adhesives.



Intersept®

Mold protection. Our proprietary preservative, Intersept, protects our modular carpet against mold growth and odor-causing bacteria—guaranteed. Intersept treated carpet, with proper maintenance, shows no mold or bacterial growth when tested per the ASTM E2471 Standard Test Method. Intersept is EPA approved for safe use in carpet, water insoluble and contains no halogens, heavy metals, phenols or formaldehyde.



ReEntry®

Recyclable is now a reality. Through our ReEntry program and partnerships with our fiber suppliers and recycling centers throughout North America, separated Type 6 and 6,6 nylon are recycled into new 6 and 6,6 nylon while separated GlasBac®, GlasBacRE and similar competitor backings are recycled into new GlasBacRE non-virgin PVC backing using our Cool Blue™ technology. The result? Products with up to 89% total recycled content, including as much as 27% post-consumer content.



Sustainable Choice

Environmental responsibility. More than 95% of Interface products manufactured in the Americas carry the GreenCircle Certified Environmental Facts label, which has verified that standard Interface products are manufactured using 99% renewable energy and offer a minimum of 66% and 80% total recycled content when backed with GlasBac and GlasBacRE backing respectively. All Interface products include published HPDs (Health Product Declarations) or Declare Labels and more than 99% have a published EPD (Environmental Product Declaration) globally, and all products produced in the Americas are NSF/ANSI 140 gold or platinum certified.

Third Party Certification



Bureau Veritas – All Interface flooring sold globally is third party verified carbon neutral.



Environmental Product Declaration (EPD) – A statement of product ingredients and environmental impacts over the entire life cycle of a product. A comprehensive life cycle assessment (LCA) is performed to ISO standards to develop an EPD, after which both the EPD and LCA must be third party verified.



Sustainable Assessment for Carpet – The only carpet sustainability standard in North America that evaluates the environmental impact of carpet for its entire lifecycle.



CRI Green Label Plus – An independent testing program that identifies carpet and adhesives with very low emissions of VOCs to help improve indoor air quality.



www.interface.com

United States Headquarters

1503 Orchard Hill Road
LaGrange, GA 30240
1.800.336.0225 ext.56511

Canadian Headquarters

233 Lahr Drive
Belleville, ON K8N 5S2
1.800.267.2149 ext.52128

Brazilian Headquarters

Rua Surubim, 577 - Conjuntos
73/74 7º Andar
04571-050 - São Paulo - SP
+ 55 11 2196 0900

Latin American Headquarters

Montes Urales # 415 Piso 6
Col. Lomas de Chapultepec
México City, D.F. 11000
Mexico
+ 52 55 6395 5100

CIM # IFS00818 09/2018



Climate change is undeniable. And reversible. Our mission is to prove it.
Join the #ClimateTakeBack and help create a climate fit for life.