

# Monochrome



Interface®



Ellsworth Kelly, Frank Stella and Mark Rothko all believed in the undeniable, in-your-face, power of color. Now Monochrome is making believers of us all. Sixty-seven solid colors ranging from bold to neutral provide unlimited options that work well on their own, mixed together or combined with other Interface products. Monochrome is not only versatile, it also has 70% recycled content. So channel your inner artist with vivid, saturated color from all points around the color wheel, because with Monochrome from Interface, your masterpiece awaits.







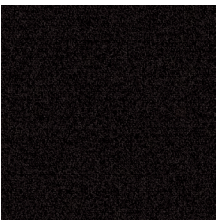




Monochrome™ Color Range



101068 TOBACCO



101800 UMBER



101801 MOUSE



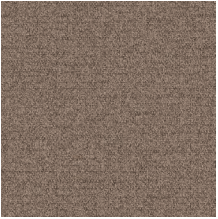
101802 CARAWAY



101803 MALT



101804 BROWN



101805 TAUPE



101806 CASTOR



101807 CREAM



101808 BRIAR



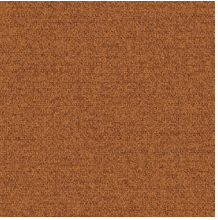
101809 CHESTNUT



101810 DOUBLOON



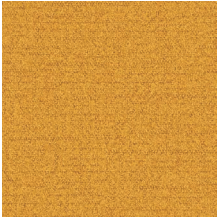
101811 LINEN



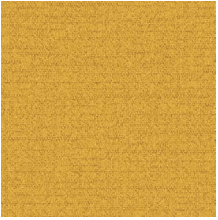
101812 MAPLE



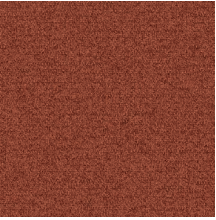
101813 HONEY



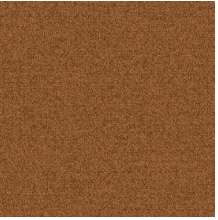
101814 SPUN GOLD



101815 MORNING GLORY



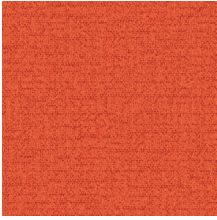
101816 FIRE BRICK



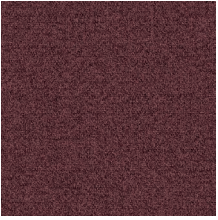
101817 EARTH RUST



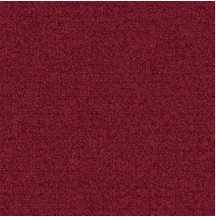
101818 PERSIMMON



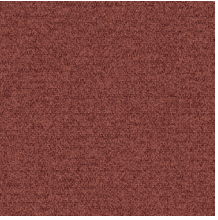
101819 ORANGE



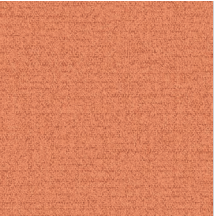
101820 WINE BERRY



101821 RASPBERRY



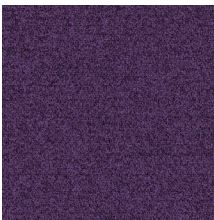
101822 MAUVE



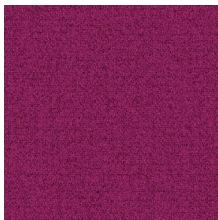
101823 PEACH



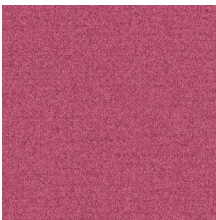
Monochrome™ Color Range (cont'd)



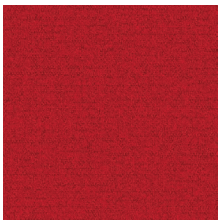
101824 EGGPLANT



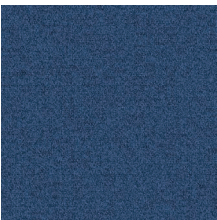
101825 BERRY



101826 VERY BERRY



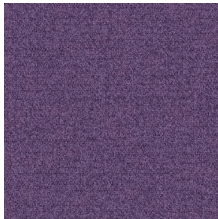
101827 RED



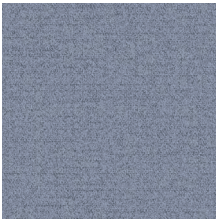
101828 LEGACY



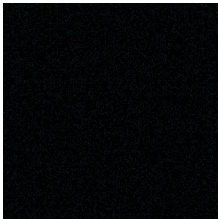
101829 CROCUS



101830 LILAC HAZE



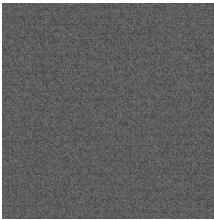
101831 LILAC



101832 BLACK



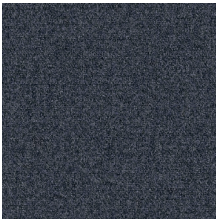
101833 SEAL



101834 FELT



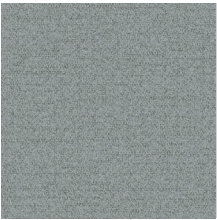
101835 SMOKE



101836 NAVY



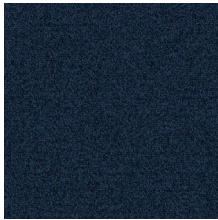
101837 GRANITE



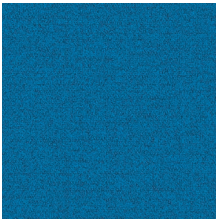
101838 FLANNEL



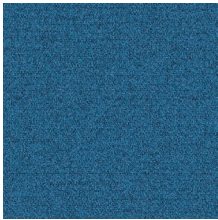
101839 CONCRETE



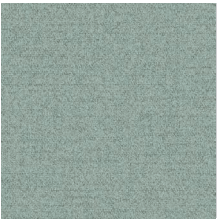
101840 MYSTIFIED



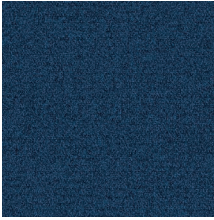
101841 BLUE



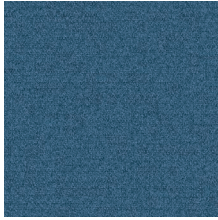
101842 FLEMISH BLUE



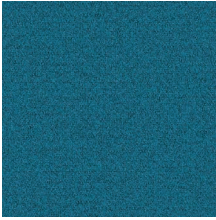
101843 MORNING HAZE



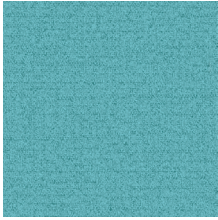
101844 FLAG BLUE



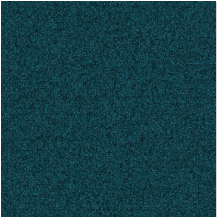
101845 MEDICI BLUE



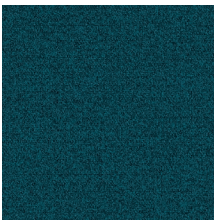
101846 WATERFALL



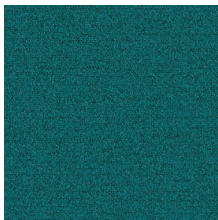
101847 NAUTICAL



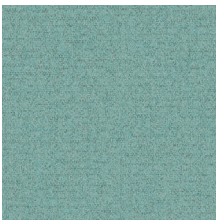
101848 ANTIQUE BLUE



101849 SPA



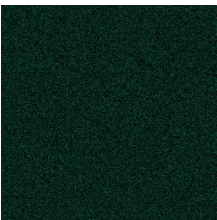
101850 JUNIPER



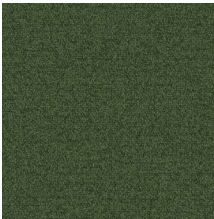
101851 AQUAMARINE



101852 JUNGLE



101853 OCEAN



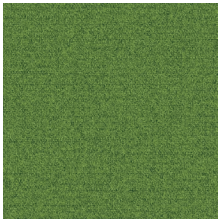
101854 HOLLY



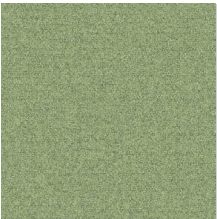
101855 SECRET GARDEN



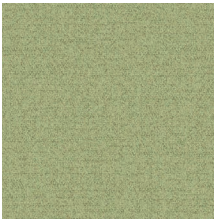
101856 YEW



101857 ASPARAGUS



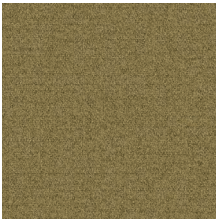
101858 MINT JULEP



101859 GRASS



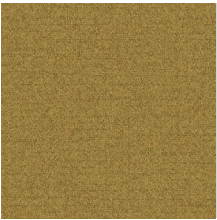
101860 GARDEN LEAF



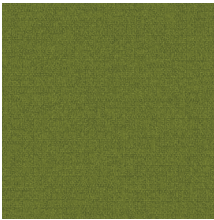
101861 PRAIRIE



101862 ARTICHOKE



101863 SANDY COVE



103649 LIME



103650 CITRUS

Specifications

Modular, 50 cm x 50 cm	13857
Yarn Manufacturer	Aquafil
Yarn System	100% Recycled Content Nylon
Dye Method	100% Solution Dyed
Construction	Tufted Textured Loop
Preservative Protection	Intersept®
Soil/Stain Protection	Protek12™
Pile Thickness	0.12 in, 3 mm
Pile Density	7,261 oz/yd³
Total Recycled Content	70%
Indoor Air Quality	CRI Green Label Plus #GLP0820

View the full product specification on [interface.com](#)

Installation Method



MONOLITHIC



**BROWSE IMAGES**  
**ORDER SAMPLES**



Why Our Modular Flooring?



**Modular Flooring**  
*Performance and flexibility.* Interface's standard backing systems set the industry standard for modular performance. Tiles stay on the floor with no upcurl, no taping and no rippling effect, yet are easy to selectively replace. Our modular carpet is easier to handle than bulky roll carpet and produces an average of just 3-4% waste compared to roll carpet's average of 14%. And it installs seamlessly with our LVT, no transition strips needed.



**TacTiles™**  
*No glue installation.* Our revolutionary TacTiles installation system eliminates the need for glue, adhering tiles securely together to form a floor that “floats” for greater flexibility, easier replacement and long-term performance. The result? Less mess, less waste and virtually no VOCs, not to mention an environmental footprint that is over 90% lower than that of traditional glue adhesives. TacTiles are approved for use on GlasBac™, CQuest™GB, CQuest™Bio and CQuest™BioX.



**Intersept®**  
*Mold protection.* Our proprietary preservative, Intersept, protects our modular carpet against mold growth and odor-causing bacteria—guaranteed. Intersept treated carpet, with proper maintenance, shows no mold or bacterial growth when tested per the ASTM E2471 Standard Test Method. Intersept is EPA approved for safe use in carpet, water insoluble and contains no halogens, heavy metals, phenols or formaldehyde. Intersept is standard in Interface carpet tile products backed with GlasBac, CQuestGB, ReadyBac™ and CushionBac Renew™.



**Environmental Product Declaration (EPD)**  
A statement of product ingredients and environmental impacts over the entire life cycle of a product. A comprehensive life cycle assessment (LCA) is performed to ISO standards to develop an EPD, after which both the EPD and LCA must be third party verified.



**Health Product Declaration (HPD)**  
A transparency tool for evaluating whether a product supports Green Chemistry. As part of our work on Health and Materials, Interface continuously reduces the environmental and health impacts of our products through elimination of materials of concern.



**ReEntry™**  
*Recyclable.* Through our ReEntry program we reclaim and recycle our carpet tile and Sound Choice™ LVT. ReEntry is the only third party certified recycling system among North American flooring manufacturers.



**Sustainability Transparency**  
Transparency and certified sustainability leadership come standard on Interface products. We enlist outside partners to help us evaluate the entire product life cycle and reduce the environmental and human health impact of our flooring. And, carpet products made in our US facilities are made with 99% renewable energy.



**CRI Green Label Plus**  
An independent testing program that identifies carpet and adhesives with very low emissions of VOCs to help improve indoor air quality.



**NSF 140 Sustainable Carpet Assessment**  
The only carpet sustainability standard in North America that evaluates the environmental impact of carpet for its entire life cycle.

📍 Samples

Register and order samples at interface.com. Not near a computer? You can also request samples by calling one of the numbers below.

United States  
1.877.605.1500

Canada  
1.866.398.3192

interface.com

- Do more on interface.com
- Browse products and order samples
  - Save and share favorites
  - See images of products in a variety of room scenes
  - Browse floor designs, change colors, upload your own image, download and share
  - Get full specifications, sustainability certifications and more
  - Check order status and inventory availability
  - Sign up to get the latest information on Interface products and news

InterCircle Sample Return

Help us close the loop on the carpet sampling process. Through our InterCircle Sample Return program, sample materials stay out of the landfill and are re-used as samples until it is time to recycle them into new carpet. By reducing sample production material and diverting old materials from the landfill, we can reduce our overall environmental footprint.

Call 1.877.605.1500 (U.S.) or 1.866.398.3192 (Canada) to order a sample return bag with a prepaid return label.

We have tried our very best to accurately represent product colors. However, due to the nature of printed materials, color of actual products may vary slightly. Please request a sample to see actual product color.

All product specifications reflect averages derived from product sample testing, are subject to normal manufacturing and testing tolerances and inherent pattern variances, and may be changed without notice. For more information about these and other important attributes of the product(s) described herein, including recycled content and product warranty information, please see interface.com/disclaimer.





Printed on 50% post consumer waste (PCW)  
fiber manufactured using wind power.

**interface.com**

**United States Headquarters**

1280 West Peachtree Street NW  
Atlanta, GA 30309  
1.800.634.6032

**Canadian Headquarters**

233 Lahr Drive  
Belleville, ON K8N 5S2  
1.800.267.2149 ext. 52128

CIM# IFS00655 10/2024